



## DIVISION OF FAMILY RESOURCES

# Monthly Management Report September 2019

### State of Indiana

Eric Holcomb  
Governor

### Family and Social Services Administration

Jennifer Walthall, M.D.  
Secretary

### Division of Family Resources

Adrienne Shields  
Director

For questions regarding data on this report contact:  
[office.Communications@fssa.IN.gov](mailto:office.Communications@fssa.IN.gov)



## State of Indiana

Published October 2019



## DIVISION OF FAMILY RESOURCES

### Monthly Management Report

Reporting Month: September 2019

Location: Statewide

#### TEMPORARY ASSISTANCE FOR NEEDY FAMILIES (TANF)

Child-Only and One-Parent Families	Sep 30, 2019	August 2019	September 2018	Annual Change
Number of families receiving TANF Grants	5,159	5,111	5,847	-11.77%
Total number of grant recipients	10,679	10,556	12,250	-12.82%
Number of adult grant recipients	1,465	1,450	1,699	-13.77%
Number of child grant recipients	9,214	9,106	10,551	-12.67%
Total payments	\$984,146	\$983,016	\$1,141,351	-13.77%
Average payment per case	\$190.76	\$192.33	\$195.20	-2.27%
Average payment per recipient	\$92.16	\$93.12	\$93.17	-1.09%
Number of cases with benefits reduced to zero	59	66	84	-29.76%
Number of recipients with benefits reduced to zero	124	139	180	-31.11%
Number of adult recipients with benefit reduced to zero	27	30	47	-42.55%
Number of child recipients with benefit reduced to zero	97	109	133	-27.07%

Two-Parent Families	Sep 30, 2019	August 2019	September 2018	Annual Change
Number of families receiving TANF Grants	233	223	231	0.87%
Total number of grant recipients	885	821	882	0.34%
Number of adult grant recipients	319	294	309	3.24%
Number of child grant recipients	566	527	573	-1.22%
Total payments	\$55,015	\$51,960	\$47,799	15.10%
Average payment per case	\$236.12	\$233.00	\$206.92	14.11%
Average payment per recipient	\$62.16	\$63.29	\$54.19	14.71%
Number of cases with benefits reduced to zero	4	5	6	-33.33%
Number of recipients with benefits reduced to zero	20	26	22	-9.09%
Number of adult recipients with benefit reduced to zero	7	9	9	-22.22%
Number of child recipients with benefit reduced to zero	13	17	13	0.00%

**Note:**

All data July 2014 and following will be broken out according to the new DFR region structure effective July 1 2014.

Source:



## DIVISION OF FAMILY RESOURCES

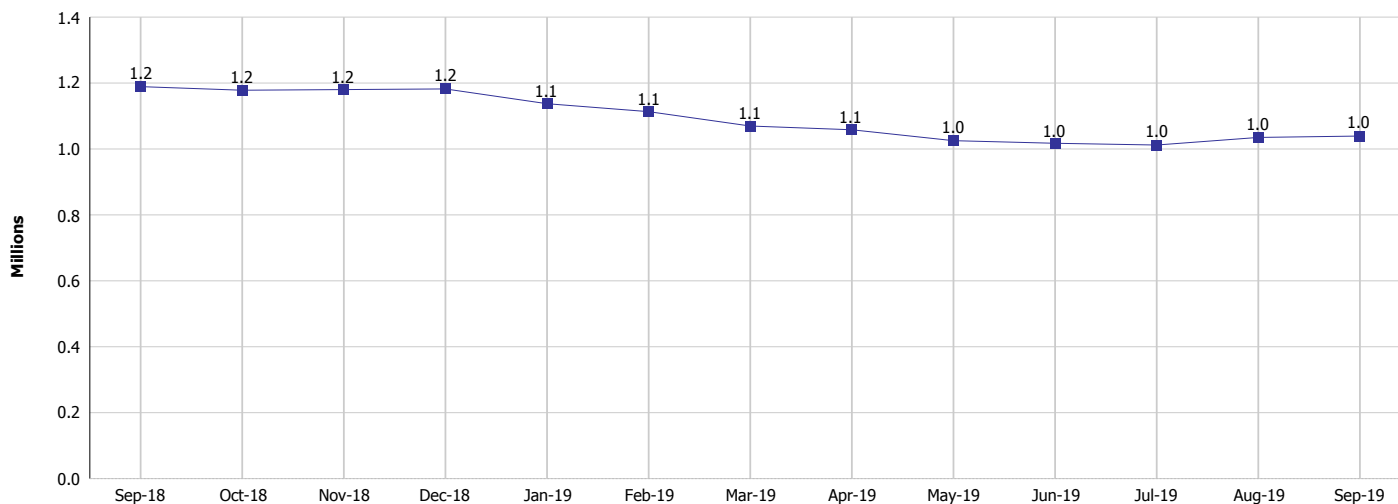
### Monthly Management Report

Reporting Month: September 2019

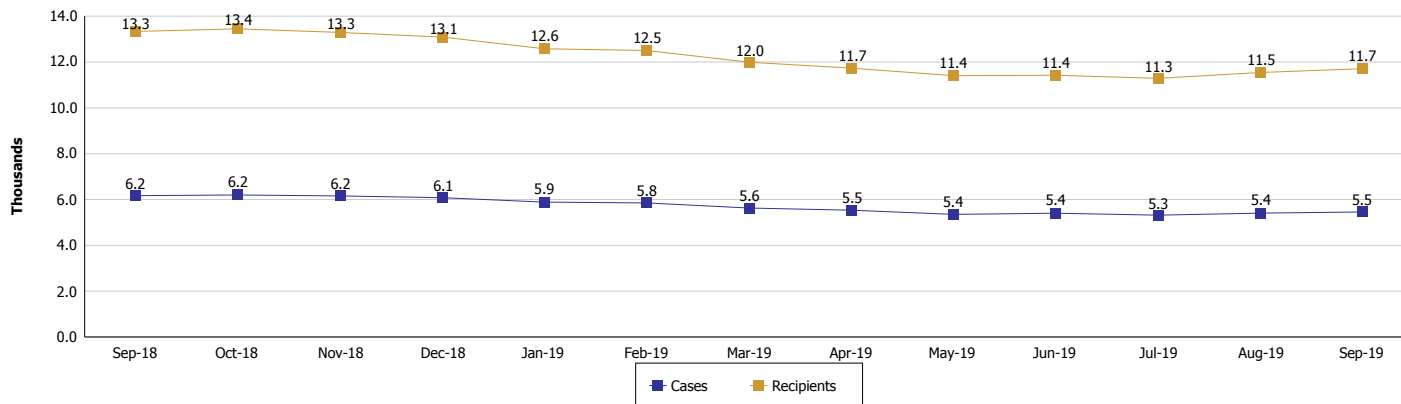
Location: Statewide

#### TEMPORARY ASSISTANCE FOR NEEDY FAMILIES (TANF)

**TANF Cash Assistance**  
(TANF Regular and TANF Two-Parent)



**TANF Cases and Recipients**  
(TANF Regular and TANF Two-Parent)



**Note:**

All data July 2014 and following will be broken out according to the new DFR region structure effective July 1 2014.



## DIVISION OF FAMILY RESOURCES

### Monthly Management Report

Reporting Month: September 2019

Location: Statewide

#### SUPPLEMENTAL NUTRITION ASSISTANCE PROGRAM (SNAP)

	September 2019	August 2019	September 2018	Annual Change
Total issuance	\$67,913,086	\$68,728,164	\$71,379,747	-4.86%
Number of households receiving SNAP benefits	255,861	258,050	270,223	-5.31%
Number of recipients	568,977	573,808	602,055	-5.49%
Average issuance per household	\$265.43	\$266.34	\$264.15	0.48%
Average issuance per recipient	\$119.36	\$119.78	\$118.56	0.67%

**Note:**

All data July 2014 and following will be broken out according to the new DFR region structure effective July 1 2014.

#### SNAP ERROR RATES

	May 2019	April 2019	March 2019	Cumulative FFY 2018
FFY Cumulative Positive Error Rate	9.05%	8.66%	9.12%	6.10%
Monthly Positive Error Rate	11.54%	6.78%	8.20%	NA
FFY Cumulative Negative Error Rate	40.56%	41.29%	41.50%	39.94%
Monthly Negative Error Rate	35.59%	40.00%	46.30%	NA

**Note:**

All data July 2014 and following will be broken out according to the new DFR region structure effective July 1 2014.

**Notes:**

Reporting periods for SNAP Error Rates reflect the review period and Federal submission deadline. The month reported above is the month in which an action was taken included in the review sample.

Positive actions are those which produced an issuance of benefits to a household. Negative actions are those which closed or denied benefits to a household.

Error Rate data is reported by the state before the federal agency has accepted and finalized the results. This rate is subject to revision based upon: completion and submission of outstanding reviews; final review corrections; and completion of previously dropped reviews. Monthly numbers are taken from end-of-month totals. The error status of cases may be changed by the State or Federal Review process, which would cause a change that might not be reflected in the previous monthly numbers.



# DIVISION OF FAMILY RESOURCES

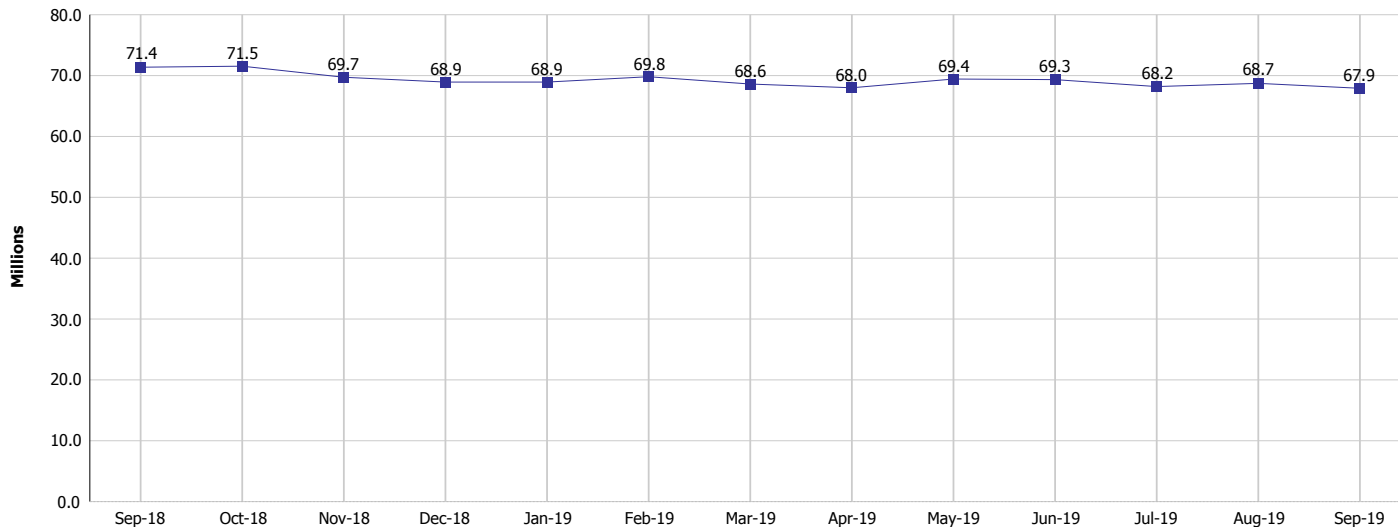
## Monthly Management Report

Reporting Month: September 2019

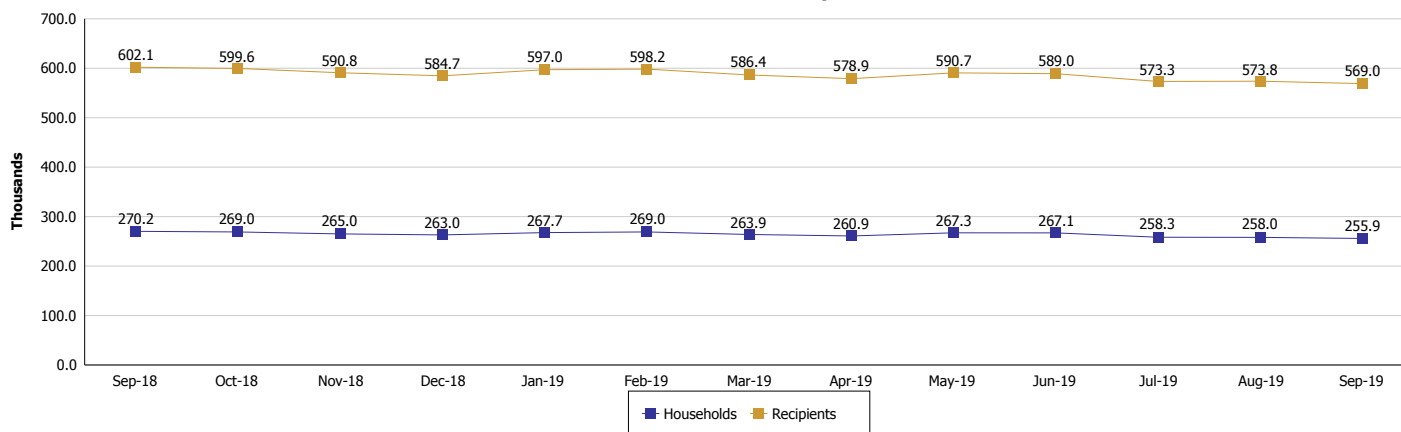
Location: Statewide

### SUPPLEMENTAL NUTRITION ASSISTANCE PROGRAM (SNAP)

#### SNAP Issuance



#### SNAP Households and Recipients



**Note:**

All data July 2014 and following will be broken out according to the new DFR region structure effective July 1 2014.



## DIVISION OF FAMILY RESOURCES

### Monthly Management Report

Reporting Month: September 2019

Location: Statewide

#### HIP 2.0 and SNAP

	September 2019	August 2019	September 2018	Annual Change
Total HIP 2.0 Members	431,285	426,975	422,515	2.08%
HIP Members also SNAP Recipients	141,009	140,035	145,298	-2.95%
Percentage HIP Members SNAP Recipients	32.7%	32.8%	34.4%	0.17%
HIP Members SNAP ABAWDs	3,936	3,890	7,450	-47.17%
Percentage HIP Members SNAP ABAWDs	0.9%	0.9%	1.8%	0.17%

**Note:**

All data July 2014 and following will be broken out according to the new DFR region structure effective July 1 2014.



## DIVISION OF FAMILY RESOURCES

### Monthly Management Report

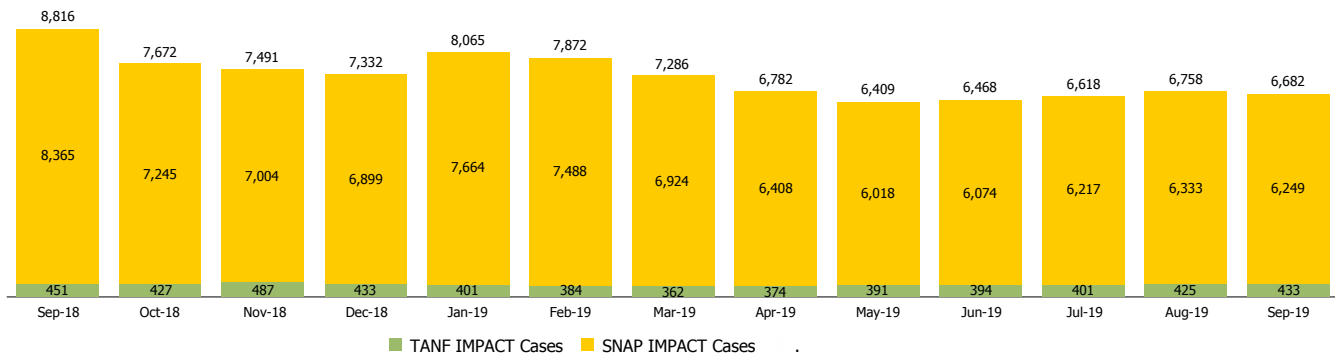
Reporting Month: September 2019

Location: Statewide

#### INDIANA MANPOWER PLACEMENT AND COMPREHENSIVE TRAINING (IMPACT)

	September 2019	August 2019	September 2018	Annual Change
Number of IMPACT cases	6,682	6,758	8,816	-24.21%
Number of TANF IMPACT adults	433	425	451	-3.99%
Number of SNAP IMPACT Cases	6,249	6,333	8,365	-25.30%
Total number of adults employed	935	1,145	1,432	-34.71%
Number of TANF IMPACT adults newly employed (within past 30 days)	72	97	101	-28.71%
Number of SNAP IMPACT adults employed	863	1,048	1,331	-35.16%
Total number of adults ineligible due to employment	4,388	4,463	5,353	-18.03%
Number of TANF adults ineligible due to employment	16	17	9	77.78%
Number of SNAP adults ineligible due to employment	4,372	4,446	5,344	-18.19%

**IMPACT Caseloads**  
(SNAP, TANF, Total Caseload)



**Note:**

All data July 2014 and following will be broken out according to the new DFR region structure effective July 1 2014.