



DIVISION OF FAMILY RESOURCES

Monthly Management Report September 2020

State of Indiana

Eric Holcomb
Governor

Family and Social Services Administration

Jennifer Sullivan, M.D.
Secretary

Division of Family Resources

Adrienne Shields
Director

For questions regarding data on this report contact:
office.Communications@fssa.IN.gov



State of Indiana

Published October 2020



DIVISION OF FAMILY RESOURCES

Monthly Management Report

Reporting Month: September 2020

Location: Statewide

TEMPORARY ASSISTANCE FOR NEEDY FAMILIES (TANF)

Child-Only and One-Parent Families	Sep 30, 2020	August 2020	September 2019	Annual Change
Number of families receiving TANF Grants	7,330	7,127	5,159	42.08%
Total number of grant recipients	16,527	16,009	10,679	54.76%
Number of adult grant recipients	3,351	3,250	1,465	128.74%
Number of child grant recipients	13,176	12,759	9,214	43.00%
Total payments	\$1,525,648	\$1,473,791	\$984,146	55.02%
Average payment per case	\$208.14	\$206.79	\$190.76	9.11%
Average payment per recipient	\$92.31	\$92.06	\$92.16	0.17%
Number of cases with benefits reduced to zero	330	276	59	459.32%
Number of recipients with benefits reduced to zero	804	691	124	548.39%
Number of adult recipients with benefit reduced to zero	234	196	27	766.67%
Number of child recipients with benefit reduced to zero	570	495	97	487.63%

Two-Parent Families	Sep 30, 2020	August 2020	September 2019	Annual Change
Number of families receiving TANF Grants	620	569	233	166.09%
Total number of grant recipients	2,135	2,022	885	141.24%
Number of adult grant recipients	721	715	319	126.02%
Number of child grant recipients	1,414	1,307	566	149.82%
Total payments	\$167,506	\$156,053	\$55,015	204.47%
Average payment per case	\$270.17	\$274.26	\$236.12	14.42%
Average payment per recipient	\$78.46	\$77.18	\$62.16	26.21%
Number of cases with benefits reduced to zero	44	51	4	1,000.00%
Number of recipients with benefits reduced to zero	177	204	20	785.00%
Number of adult recipients with benefit reduced to zero	72	84	7	928.57%
Number of child recipients with benefit reduced to zero	105	120	13	707.69%

Note:

All data July 2014 and following will be broken out according to the new DFR region structure effective July 1 2014.

Source:



DIVISION OF FAMILY RESOURCES

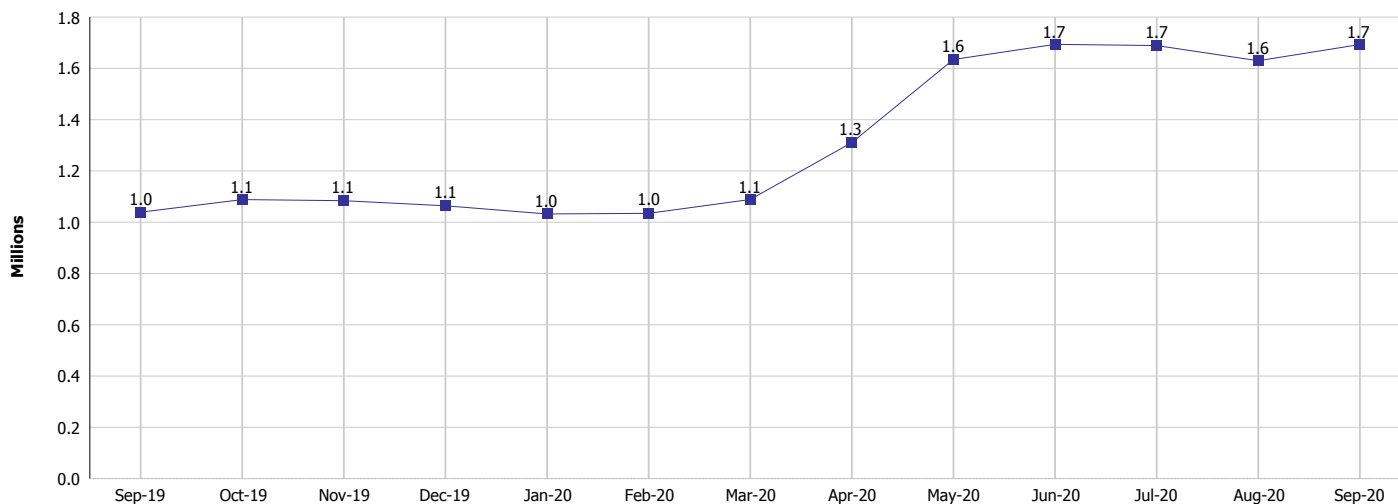
Monthly Management Report

Reporting Month: September 2020

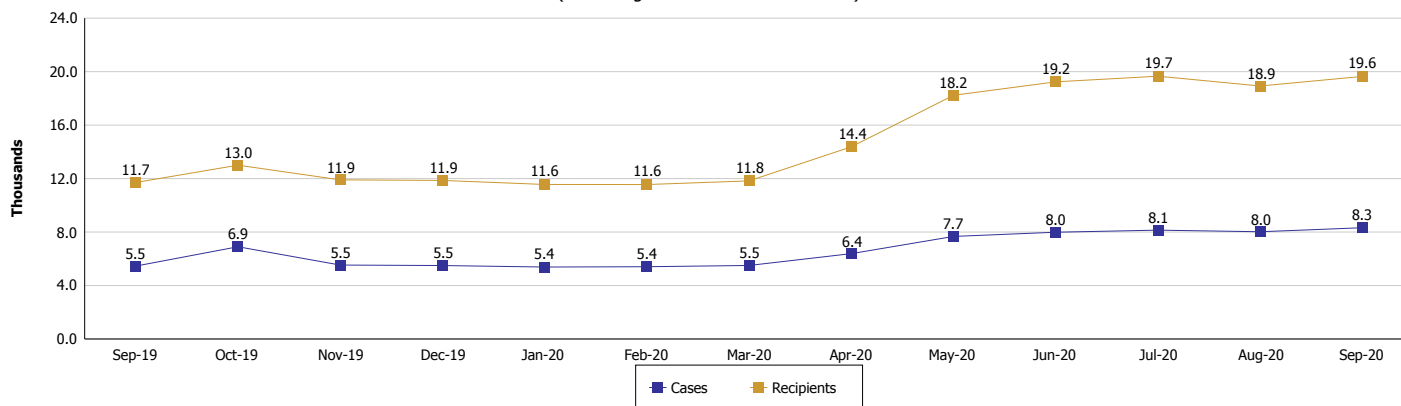
Location: Statewide

TEMPORARY ASSISTANCE FOR NEEDY FAMILIES (TANF)

TANF Cash Assistance
(TANF Regular and TANF Two-Parent)



TANF Cases and Recipients
(TANF Regular and TANF Two-Parent)



Note:

All data July 2014 and following will be broken out according to the new DFR region structure effective July 1 2014.

Monthly Management Report

Reporting Month: September 2020 Location: Statewide

SUPPLEMENTAL NUTRITION ASSISTANCE PROGRAM (SNAP)

	September 2020	August 2020	September 2019	Annual Change
Total issuance	\$115,962,141	\$112,072,294	\$67,913,086	70.75%
Number of households receiving SNAP benefits	300,332	295,642	255,861	17.38%
Number of recipients	646,126	633,289	568,977	13.56%
Average issuance per household	\$386.11	\$379.08	\$265.43	45.47%
Average issuance per recipient	\$179.47	\$176.97	\$119.36	50.36%

Note:
All data July 2014 and following will be broken out according to the new DFR region structure effective July 1 2014.

SNAP ERROR RATES

	Cumulative FFY
FFY Cumulative Positive Error Rate	
Monthly Positive Error Rate	NA
FFY Cumulative Negative Error Rate	
Monthly Negative Error Rate	NA

Note:
All data July 2014 and following will be broken out according to the new DFR region structure effective July 1 2014.

Notes:
Reporting periods for SNAP Error Rates reflect the review period and Federal submission deadline. The month reported above is the month in which an action was taken included in the review sample.
Positive actions are those which produced an issuance of benefits to a household. Negative actions are those which closed or denied benefits to a household.
Error Rate data is reported by the state before the federal agency has accepted and finalized the results. This rate is subject to revision based upon: completion and submission of outstanding reviews; final review corrections; and completion of previously dropped reviews. Monthly numbers are taken from end-of-month totals. The error status of cases may be changed by the State or Federal Review process, which would cause a change that might not be reflected in the previous monthly numbers.



DIVISION OF FAMILY RESOURCES

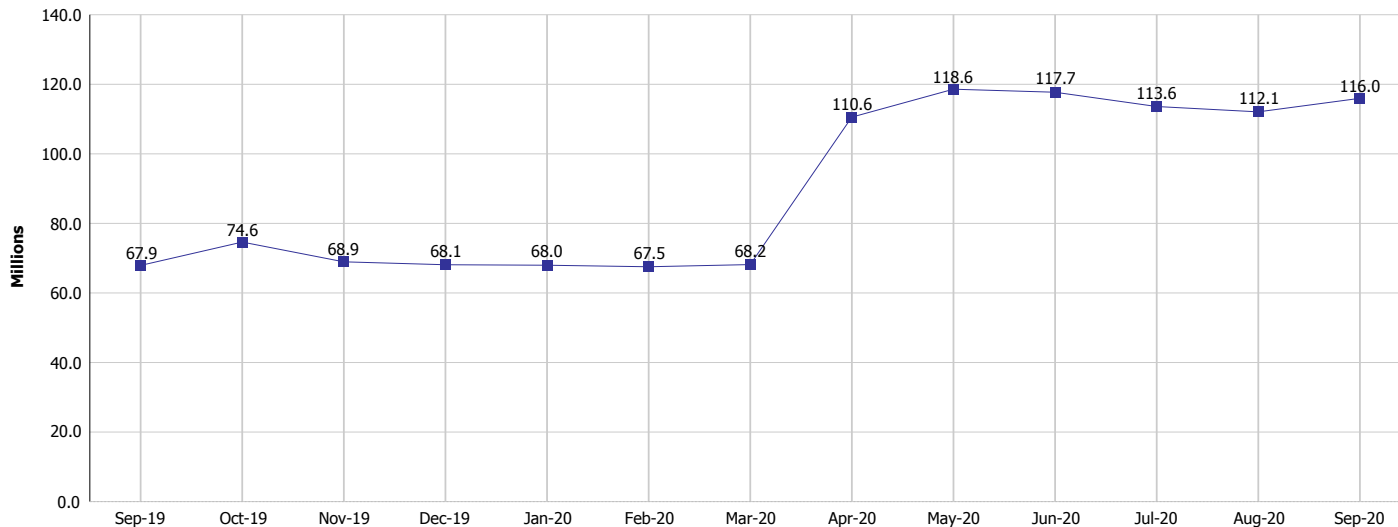
Monthly Management Report

Reporting Month: September 2020

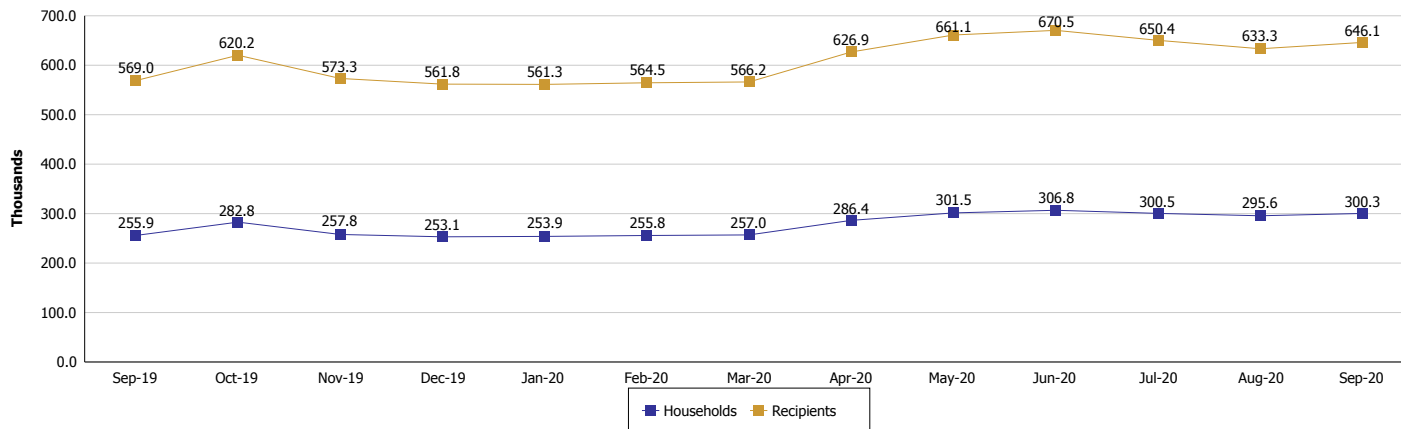
Location: Statewide

SUPPLEMENTAL NUTRITION ASSISTANCE PROGRAM (SNAP)

SNAP Issuance



SNAP Households and Recipients



Note:

All data July 2014 and following will be broken out according to the new DFR region structure effective July 1 2014.



DIVISION OF FAMILY RESOURCES

Monthly Management Report

Reporting Month: September 2020

Location: Statewide

HIP 2.0 and SNAP

	September 2020	August 2020	September 2019	Annual Change
Total HIP 2.0 Members	566,546	539,209	431,285	31.36%
HIP Members also SNAP Recipients	180,488	170,284	141,009	28.00%
Percentage HIP Members SNAP Recipients	31.9%	31.6%	32.7%	-0.84
HIP Members SNAP ABAWDs	402	1,569	3,936	-89.79%
Percentage HIP Members SNAP ABAWDs	0.1%	0.3%	0.9%	-0.8

Note:

All data July 2014 and following will be broken out according to the new DFR region structure effective July 1 2014.



DIVISION OF FAMILY RESOURCES

Monthly Management Report

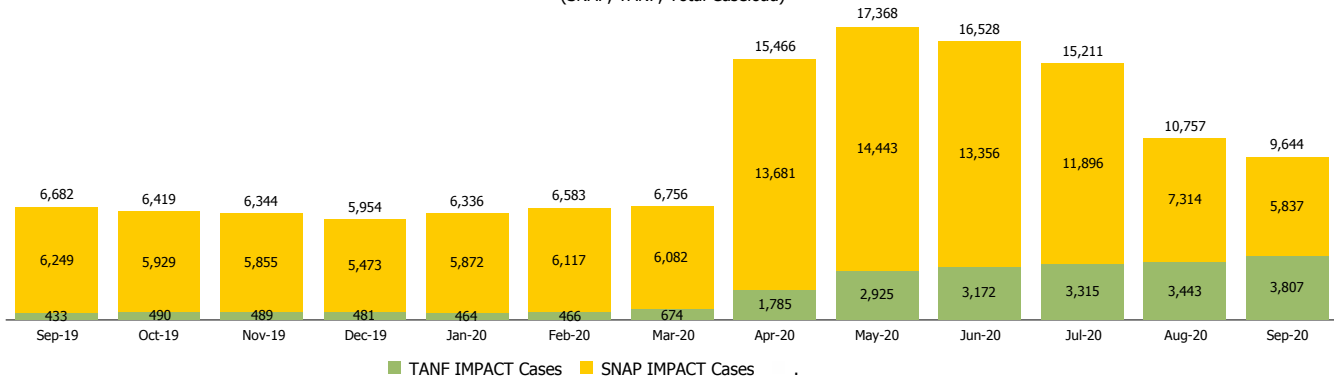
Reporting Month: September 2020

Location: Statewide

INDIANA MANPOWER PLACEMENT AND COMPREHENSIVE TRAINING (IMPACT)

	September 2020	August 2020	September 2019	Annual Change
Number of IMPACT cases	9,644	10,757	6,682	44.33%
Number of TANF IMPACT adults	3,807	3,443	433	779.21%
Number of SNAP IMPACT Cases	5,837	7,314	6,249	-6.59%
Total number of adults employed	1,024	1,224	935	9.52%
Number of TANF IMPACT adults newly employed (within past 30 days)	255	256	72	254.17%
Number of SNAP IMPACT adults employed	769	968	863	-10.89%
Total number of adults ineligible due to employment	2,893	10,962	4,388	-34.07%
Number of TANF adults ineligible due to employment	14	31	16	-12.50%
Number of SNAP adults ineligible due to employment	2,879	10,931	4,372	-34.15%

IMPACT Caseloads
(SNAP, TANF, Total Caseload)



Note:

All data July 2014 and following will be broken out according to the new DFR region structure effective July 1 2014.