



## DIVISION OF FAMILY RESOURCES

# Monthly Management Report October 2012

**State of Indiana**  
Mitchell E. Daniels, Jr.  
Governor

**Family and Social Services  
Administration**  
Michael Gargano  
Secretary

**Division of Family  
Resources**  
Mike Carr  
Interim Director

For questions regarding data on this report contact:  
[office.Communications@fssa.IN.gov](mailto:office.Communications@fssa.IN.gov)



## State of Indiana

Published November 2012



## DIVISION OF FAMILY RESOURCES

### Monthly Management Report

Reporting Month: October 2012

Location: Statewide

#### TEMPORARY ASSISTANCE FOR NEEDY FAMILIES (TANF)

<b>Child-Only and One-Parent Families</b>	<b>October 2012</b>	<b>September 2012</b>	<b>October 2011</b>	<b>Annual Change</b>
Number of families receiving TANF Grants	13,762	13,908	20,459	-32.73%
Total number of grant recipients	31,591	31,983	50,271	-37.16%
Number of adult grant recipients	6,822	7,012	13,180	-48.24%
Number of child grant recipients	24,769	24,971	37,091	-33.22%
Total payments	\$2,556,467	\$2,613,661	\$4,003,667	-36.15%
Average payment per case	\$185.76	\$187.93	\$195.69	-5.07%
Average payment per recipient	\$80.92	\$81.72	\$79.64	1.61%
Number of cases with benefits reduced to zero	698	687	1,116	-37.46%
Number of recipients with benefits reduced to zero	1,649	1,705	2,845	-42.04%
Number of adult recipients with benefit reduced to zero	487	491	911	-46.54%
Number of child recipients with benefit reduced to zero	1,162	1,214	1,934	-39.92%

<b>Two-Parent Families</b>	<b>October 2012</b>	<b>September 2012</b>	<b>October 2011</b>	<b>Annual Change</b>
Number of families receiving TANF Grants	984	1,009	1,769	-44.38%
Total number of grant recipients	3,951	4,085	7,211	-45.21%
Number of adult grant recipients	1,556	1,601	2,982	-47.82%
Number of child grant recipients	2,395	2,484	4,229	-43.37%
Total payments	\$210,396	\$216,001	\$422,742	-50.23%
Average payment per case	\$213.82	\$214.07	\$238.97	-10.53%
Average payment per recipient	\$53.25	\$52.88	\$58.62	-9.17%
Number of cases with benefits reduced to zero	38	38	134	-71.64%
Number of recipients with benefits reduced to zero	161	148	534	-69.85%
Number of adult recipients with benefit reduced to zero	57	52	231	-75.32%
Number of child recipients with benefit reduced to zero	104	96	303	-65.68%



## DIVISION OF FAMILY RESOURCES

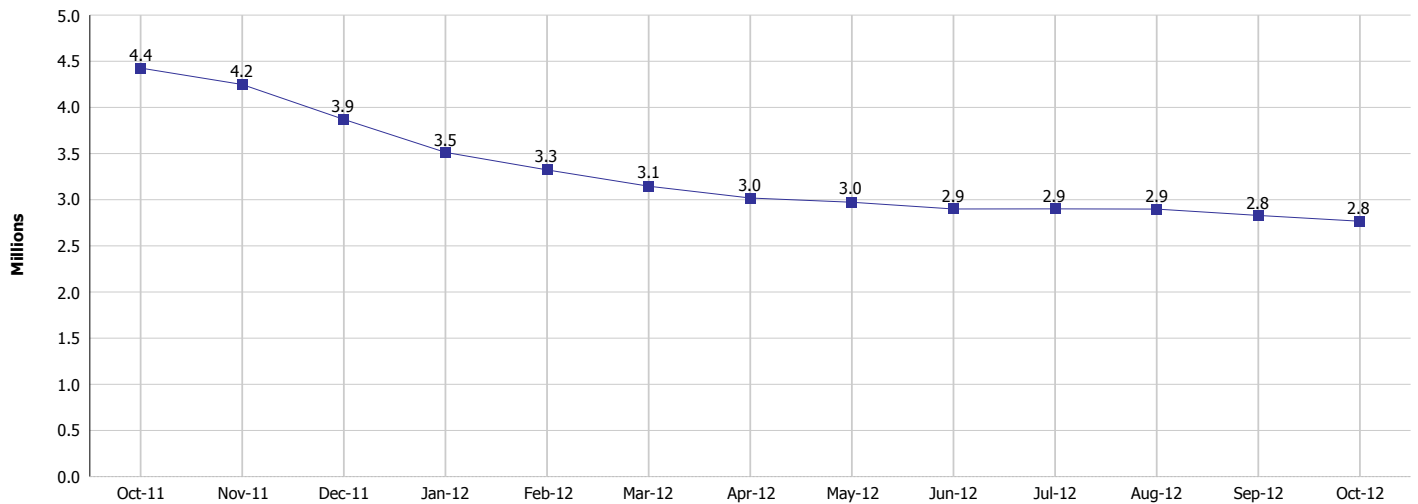
### Monthly Management Report

Reporting Month: October 2012

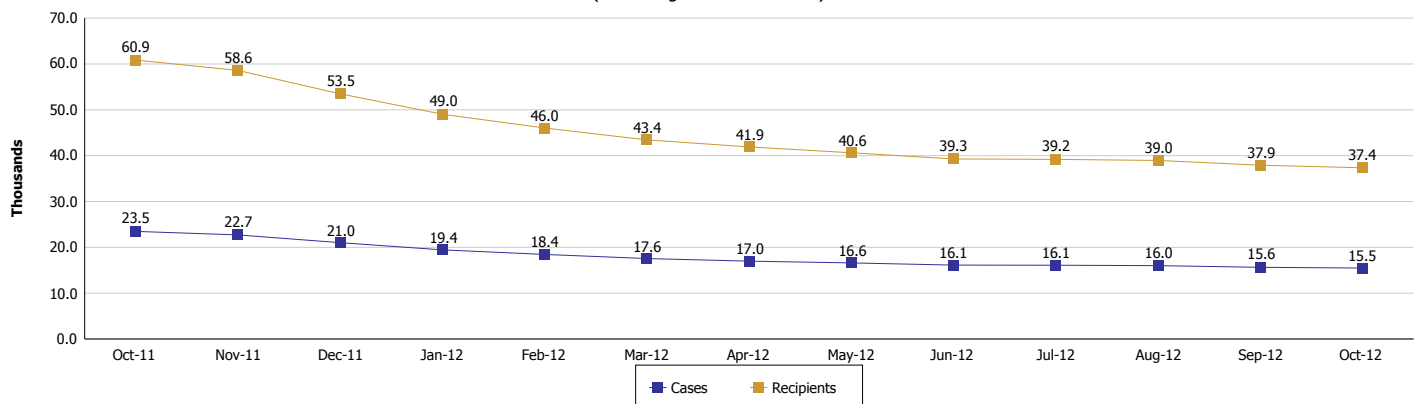
Location: Statewide

#### TEMPORARY ASSISTANCE FOR NEEDY FAMILIES (TANF)

**TANF Cash Assistance**  
(TANF Regular and TANF UP)



**TANF Cases and Recipients**  
(TANF Regular and TANF UP)





## DIVISION OF FAMILY RESOURCES

### Monthly Management Report

Reporting Month: October 2012

Location: Statewide

#### SUPPLEMENTAL NUTRITION ASSISTANCE PROGRAM (SNAP)

	October 2012	September 2012	October 2011	Annual Change
Total issuance	\$122,926,144	\$122,618,428	\$120,217,349	2.25%
Number of households receiving SNAP benefits	412,794	410,930	395,281	4.43%
Number of recipients	925,680	923,253	901,987	2.63%
Average issuance per household	\$297.79	\$298.39	\$304.13	-2.08%
Average issuance per recipient	\$132.80	\$132.81	\$133.28	-0.36%

#### SNAP ERROR RATES

	June 2012	May 2012	April 2012	Cumulative FFY 2010
FFY Cumulative Positive Error Rate	5.01%	4.73%	4.95%	2.48%
Monthly Positive Error Rate	7.42%	3.30%	4.73%	NA
FFY Cumulative Negative Error Rate	1.29%	1.24%	1.41%	2.69%
Monthly Negative Error Rate	1.79%	0.00%	3.33%	NA

#### Notes:

Reporting periods for SNAP Error Rates reflect the review period and Federal submission deadline. The month reported above is the month in which an action was taken included in the review sample.

Positive actions are those which produced an issuance of benefits to a household. Negative actions are those which closed or denied benefits to a household.

Error Rate data is reported by the state before the federal agency has accepted and finalized the results. This rate is subject to revision. Monthly numbers are taken from the end of the month totals. Error status of cases may be changed by either State or Federal Review process, which would cause a change that might not be reflected in the previous monthly numbers.



# DIVISION OF FAMILY RESOURCES

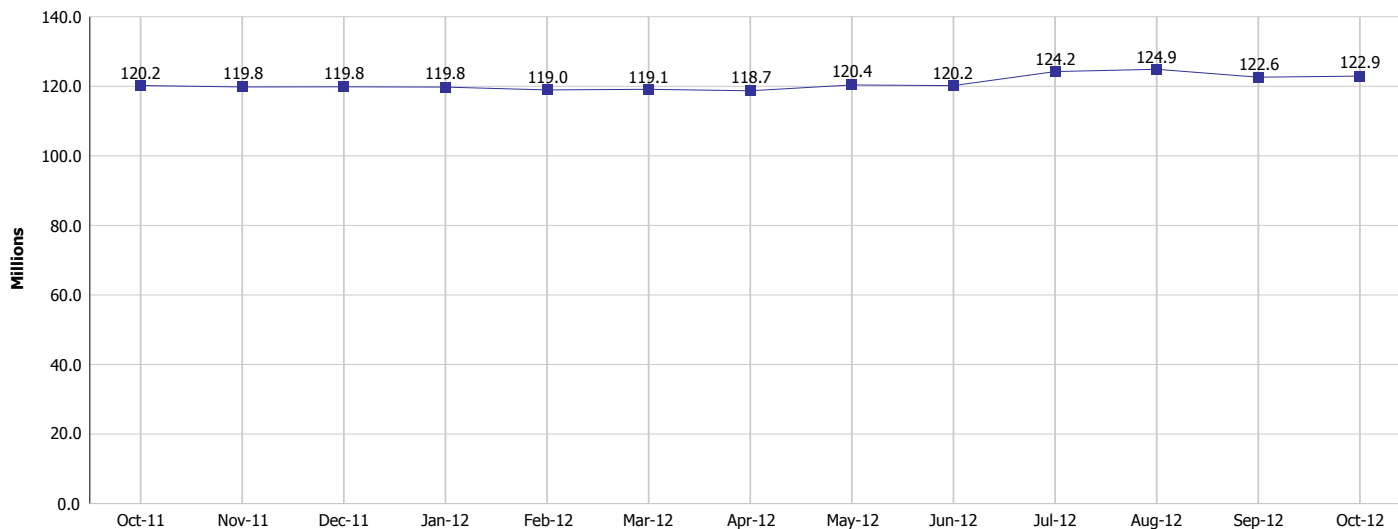
## Monthly Management Report

Reporting Month: October 2012

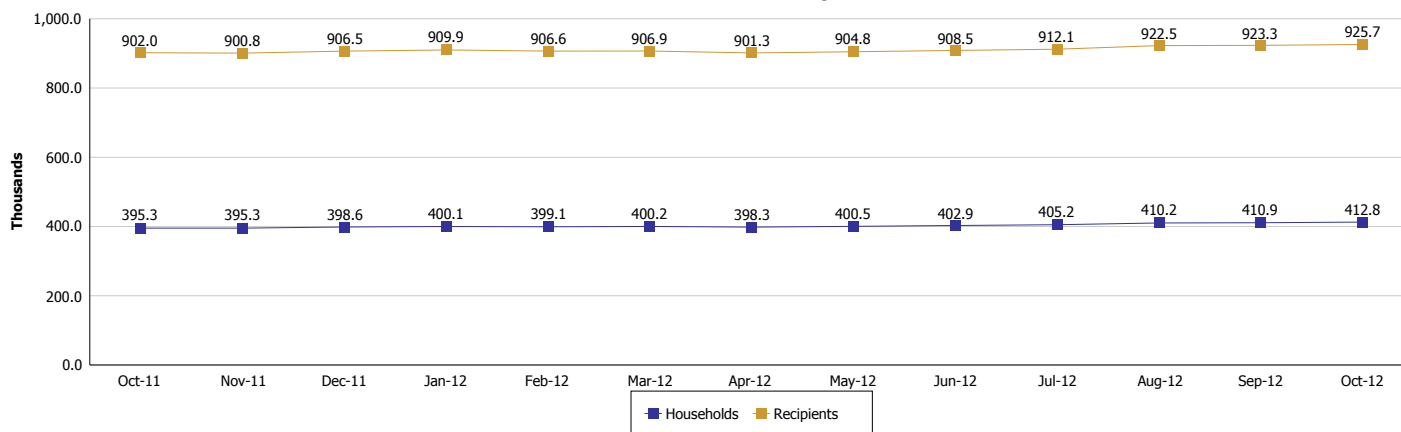
Location: Statewide

### SUPPLEMENTAL NUTRITION ASSISTANCE PROGRAM (SNAP)

#### SNAP Issuance



#### SNAP Households and Recipients





## DIVISION OF FAMILY RESOURCES

### Monthly Management Report

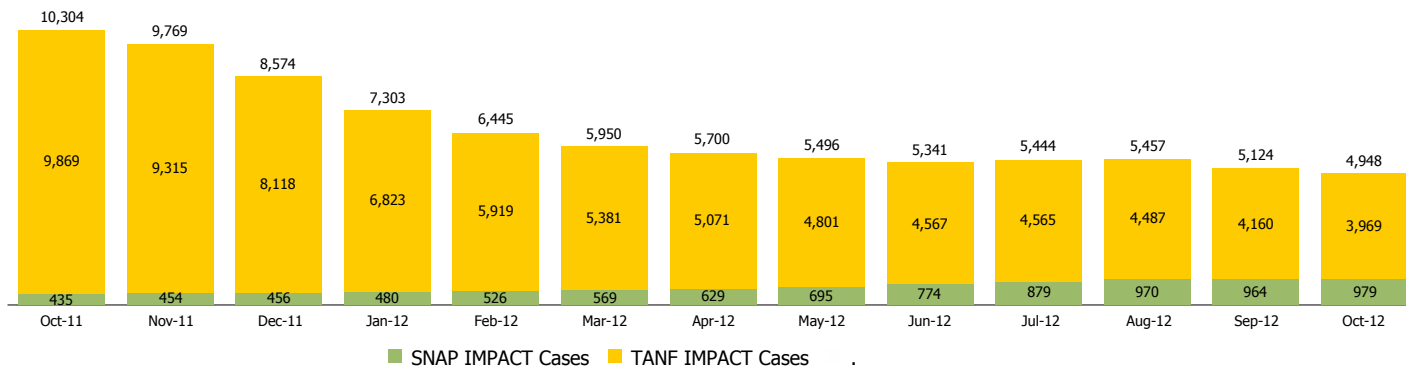
Reporting Month: October 2012

Location: Statewide

#### INDIANA MANPOWER PLACEMENT AND COMPREHENSIVE TRAINING (IMPACT)

	October 2012	September 2012	October 2011	Annual Change
Number of IMPACT cases	4,948	5,124	10,304	-51.98%
Number of TANF IMPACT Cases	3,969	4,160	9,869	-59.78%
Number of SNAP IMPACT Cases	979	964	435	125.06%
Total number of adults employed	435	374	748	-41.84%
Number of TANF IMPACT adults employed	364	305	668	-45.51%
Number of SNAP IMPACT adults employed	71	69	80	-11.25%
Total number of adults ineligible due to employment	1,908	1,674	1,755	8.72%
Number of TANF adults ineligible due to employment	23	31	45	-48.89%
Number of SNAP adults ineligible due to employment	1,885	1,643	1,710	10.23%

**IMPACT Caseloads**  
(SNAP, TANF, Total Caseload)



**Notes:**

The methodology used for counting the number of TANF IMPACT cases changed in June 2010 to show all individuals referred to IMPACT for services.

Beginning with May 2010 the SNAP IMPACT program became a voluntary program. This change resulted in a substantial reduction in the number of IMPACT cases.



## DIVISION OF FAMILY RESOURCES

### Monthly Management Report

Reporting Month: October 2012

Location: Statewide

#### CHILD CARE

	October 2012	September 2012	October 2011	Annual Change
Total Subsidized Child Care Payments	\$12,261,442	\$11,711,561	\$10,422,900	17.64%
Total Number of CCDF Children	34,754	33,150	29,557	17.58%
Total Number of licensed Child Care Homes	2,858	2,841	2,934	-2.59%
Licensed Capacity of Child Care Homes	35,929	35,631	36,832	-2.45%
Total Number of Licensed CC Centers	594	591	598	-0.67%
Licensed Capacity of CC Centers	64,404	64,070	64,622	-0.34%
Total Number of Registered Ministries (Capacity not Regulated)	710	712	743	-4.44%