



DIVISION OF FAMILY RESOURCES

Monthly Management Report November 2013

State of Indiana

Michael R. Pence
Governor

Family and Social Services Administration

Debra F. Minott
Secretary

Division of Family Resources

Lance Rhodes
Director

For questions regarding data on this report contact:
office.Communications@fssa.IN.gov



State of Indiana

Published February 2014



DIVISION OF FAMILY RESOURCES

Monthly Management Report

Reporting Month: November 2013

Location: Statewide

TEMPORARY ASSISTANCE FOR NEEDY FAMILIES (TANF)

Child-Only and One-Parent Families	November 2013	October 2013	November 2012	Annual Change
Number of families receiving TANF Grants	10,756	11,057	13,237	-18.74%
Total number of grant recipients	23,511	24,275	30,274	-22.34%
Number of adult grant recipients	4,365	4,586	6,392	-31.71%
Number of child grant recipients	19,146	19,689	23,882	-19.83%
Total payments	\$1,985,661	\$2,074,764	\$2,460,252	-19.29%
Average payment per case	\$184.61	\$187.64	\$185.86	-0.67%
Average payment per recipient	\$84.46	\$85.47	\$81.27	3.93%
Number of cases with benefits reduced to zero	469	469	609	-22.99%
Number of recipients with benefits reduced to zero	1,049	1,059	1,378	-23.88%
Number of adult recipients with benefit reduced to zero	267	270	383	-30.29%
Number of child recipients with benefit reduced to zero	782	789	995	-21.41%

Two-Parent Families	November 2013	October 2013	November 2012	Annual Change
Number of families receiving TANF Grants	706	728	925	-23.68%
Total number of grant recipients	2,930	3,001	3,722	-21.28%
Number of adult grant recipients	1,119	1,161	1,461	-23.41%
Number of child grant recipients	1,811	1,840	2,261	-19.90%
Total payments	\$146,468	\$153,115	\$198,402	-26.18%
Average payment per case	\$207.46	\$210.32	\$214.49	-3.28%
Average payment per recipient	\$49.99	\$51.02	\$53.31	-6.22%
Number of cases with benefits reduced to zero	34	32	43	-20.93%
Number of recipients with benefits reduced to zero	127	117	173	-26.59%
Number of adult recipients with benefit reduced to zero	46	48	67	-31.34%
Number of child recipients with benefit reduced to zero	81	69	106	-23.58%



DIVISION OF FAMILY RESOURCES

Monthly Management Report

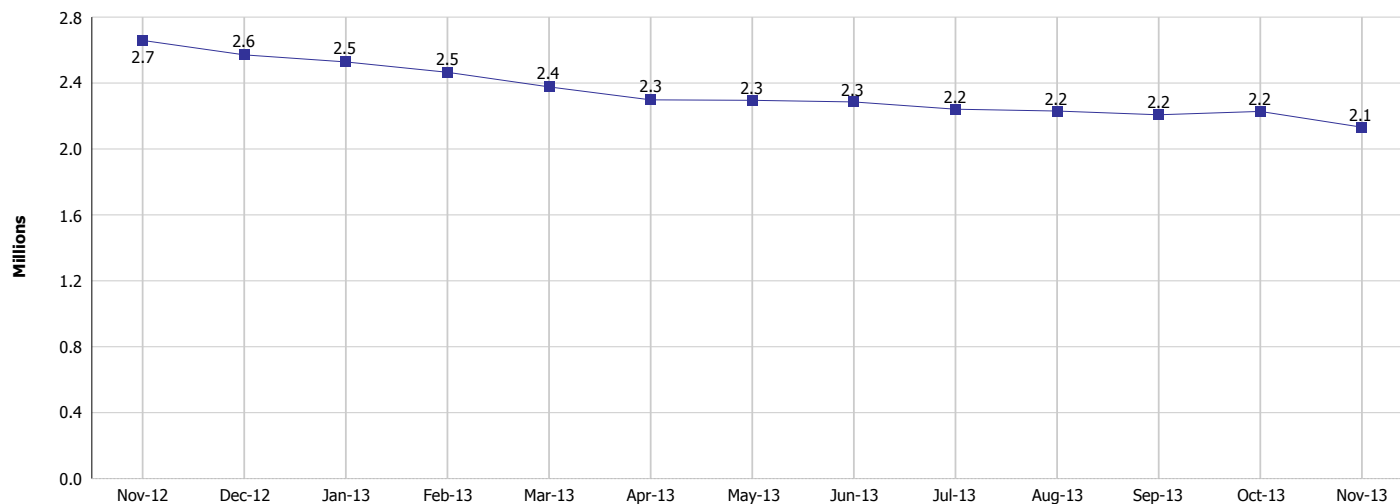
Reporting Month: November 2013

Location: Statewide

TEMPORARY ASSISTANCE FOR NEEDY FAMILIES (TANF)

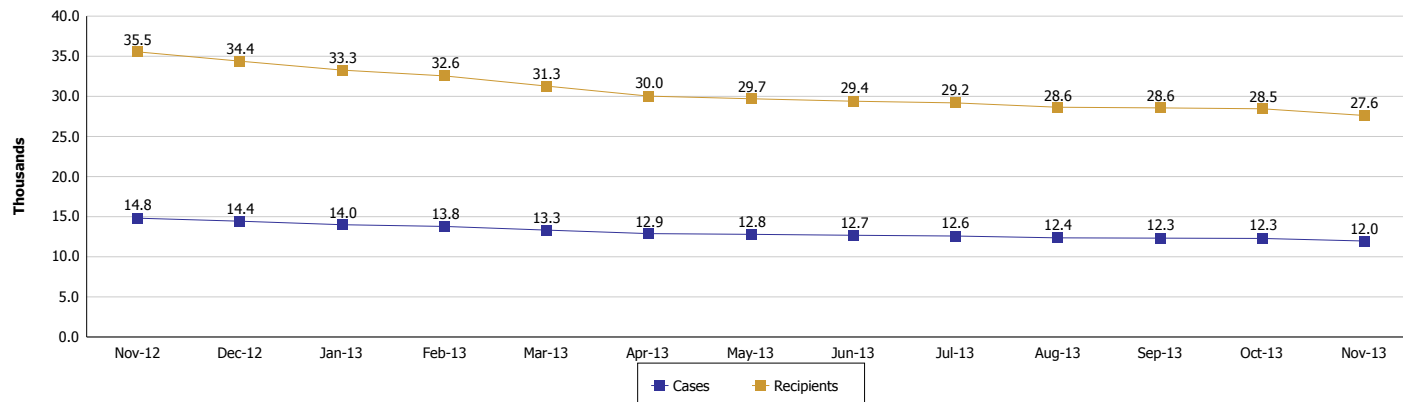
TANF Cash Assistance

(TANF Regular and TANF UP)



TANF Cases and Recipients

(TANF Regular and TANF UP)





DIVISION OF FAMILY RESOURCES

Monthly Management Report

Reporting Month: November 2013

Location: Statewide

SUPPLEMENTAL NUTRITION ASSISTANCE PROGRAM (SNAP)

	November 2013	October 2013	November 2012	Annual Change
Total issuance	\$111,862,135	\$121,835,426	\$121,727,384	-8.10%
Number of households receiving SNAP benefits	414,851	418,623	411,805	0.74%
Number of recipients	917,802	926,238	922,650	-0.53%
Average issuance per household	\$269.64	\$291.04	\$295.59	-8.78%
Average issuance per recipient	\$121.88	\$131.54	\$131.93	-7.62%

SNAP ERROR RATES

	July 2013	June 2013	May 2013	Cumulative FFY 2012
FFY Cumulative Positive Error Rate	3.74%	3.74%	3.73%	2.90%
Monthly Positive Error Rate	3.73%	3.85%	1.69%	NA
FFY Cumulative Negative Error Rate	18.90%	18.90%	19.26%	17.40%
Monthly Negative Error Rate	18.97%	15.69%	14.29%	NA

Notes:

Reporting periods for SNAP Error Rates reflect the review period and Federal submission deadline. The month reported above is the month in which an action was taken included in the review sample.

Positive actions are those which produced an issuance of benefits to a household. Negative actions are those which closed or denied benefits to a household.

Error Rate data is reported by the state before the federal agency has accepted and finalized the results. This rate is subject to revision based upon: completion and submission of outstanding reviews; final review corrections; and completion of previously dropped reviews. Monthly numbers are taken from end-of-month totals. The error status of cases may be changed by the State or Federal Review process, which would cause a change that might not be reflected in the previous monthly numbers.



DIVISION OF FAMILY RESOURCES

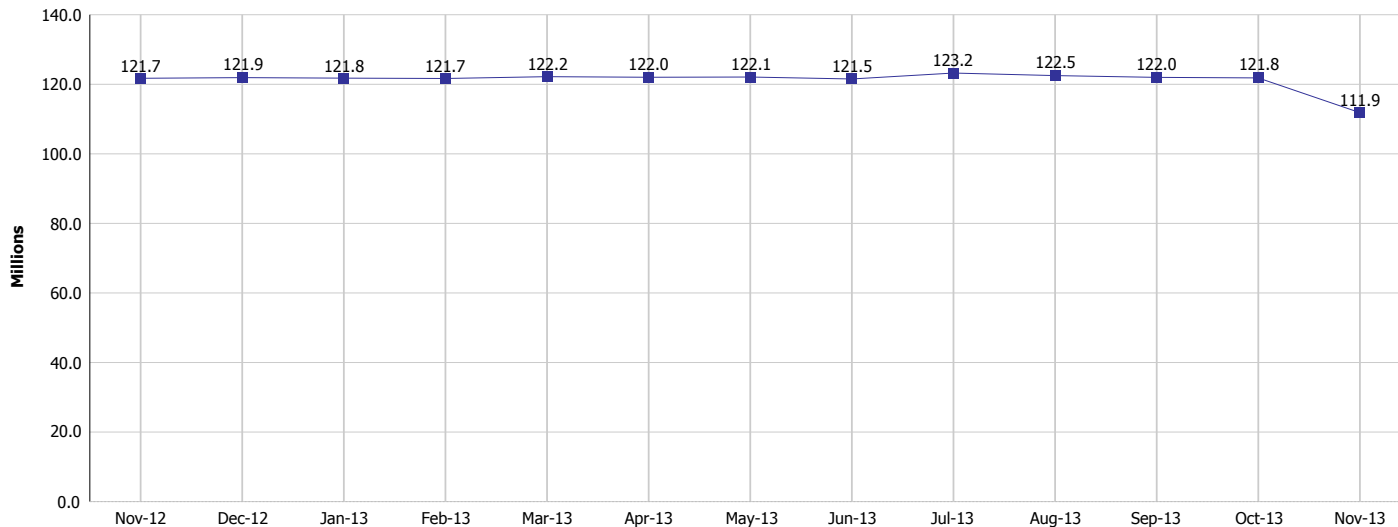
Monthly Management Report

Reporting Month: November 2013

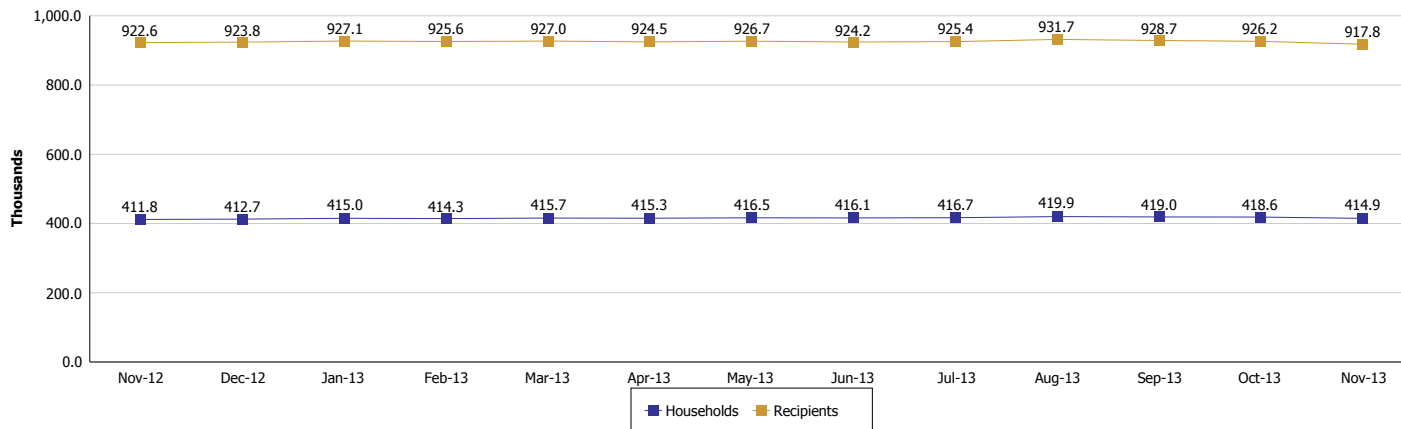
Location: Statewide

SUPPLEMENTAL NUTRITION ASSISTANCE PROGRAM (SNAP)

SNAP Issuance



SNAP Households and Recipients





DIVISION OF FAMILY RESOURCES

Monthly Management Report

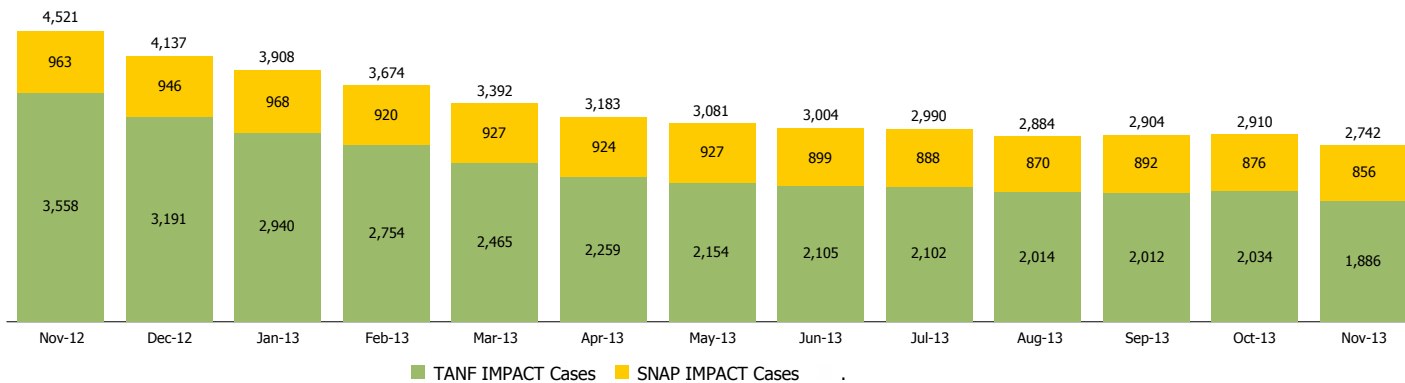
Reporting Month: November 2013

Location: Statewide

INDIANA MANPOWER PLACEMENT AND COMPREHENSIVE TRAINING (IMPACT)

	November 2013	October 2013	November 2012	Annual Change
Number of IMPACT cases	2,742	2,910	4,521	-39.35%
Number of TANF IMPACT Cases	1,886	2,034	3,558	-46.99%
Number of SNAP IMPACT Cases	856	876	963	-11.11%
Total number of adults employed	239	292	370	-35.41%
Number of TANF IMPACT adults employed	189	214	298	-36.58%
Number of SNAP IMPACT adults employed	50	78	72	-30.56%
Total number of adults ineligible due to employment	2,502	2,003	2,170	15.30%
Number of TANF adults ineligible due to employment	31	35	40	-22.50%
Number of SNAP adults ineligible due to employment	2,471	1,968	2,130	16.01%

IMPACT Caseloads
(SNAP, TANF, Total Caseload)





DIVISION OF FAMILY RESOURCES

Monthly Management Report

Reporting Month: November 2013

Location: Statewide

CHILD CARE

	November 2013	October 2013	November 2012	Annual Change
Total Subsidized Child Care Payments	\$14,815,900	\$13,484,665	\$13,035,800	13.66%
Total Number of CCDF Children	39,897	38,099	35,144	13.52%
Total Number of licensed Child Care Homes	2,808	2,798	2,841	-1.16%
Licensed Capacity of Child Care Homes	35,682	35,595	35,843	-0.45%
Total Number of Licensed CC Centers	592	589	597	-0.84%
Licensed Capacity of CC Centers	64,472	64,183	64,548	-0.12%
Total Number of Registered Ministries (Capacity not Regulated)	661	663	706	-6.37%