



## DIVISION OF FAMILY RESOURCES

# Monthly Management Report June 2020

### State of Indiana

Eric Holcomb  
Governor

### Family and Social Services Administration

Jennifer Sullivan, M.D.  
Secretary

### Division of Family Resources

Adrienne Shields  
Director

For questions regarding data on this report contact:  
[office.Communications@fssa.IN.gov](mailto:office.Communications@fssa.IN.gov)



## State of Indiana

Published October 2020



## DIVISION OF FAMILY RESOURCES

### Monthly Management Report

Reporting Month: June 2020

Location: Statewide

#### TEMPORARY ASSISTANCE FOR NEEDY FAMILIES (TANF)

Child-Only and One-Parent Families	Jun 30, 2020	May 2020	June 2019	Annual Change
Number of families receiving TANF Grants	7,300	7,027	5,111	42.83%
Total number of grant recipients	16,716	15,888	10,445	60.04%
Number of adult grant recipients	3,587	3,276	1,409	154.58%
Number of child grant recipients	13,129	12,612	9,036	45.30%
Total payments	\$1,528,256	\$1,476,862	\$971,434	57.32%
Average payment per case	\$209.35	\$210.17	\$190.07	10.15%
Average payment per recipient	\$91.42	\$92.95	\$93.00	-1.70%
Number of cases with benefits reduced to zero	97	90	66	46.97%
Number of recipients with benefits reduced to zero	224	200	137	63.50%
Number of adult recipients with benefit reduced to zero	60	53	31	93.55%
Number of child recipients with benefit reduced to zero	164	147	106	54.72%

Two-Parent Families	Jun 30, 2020	May 2020	June 2019	Annual Change
Number of families receiving TANF Grants	577	543	220	162.27%
Total number of grant recipients	2,243	2,094	814	175.55%
Number of adult grant recipients	873	827	297	193.94%
Number of child grant recipients	1,370	1,267	517	164.99%
Total payments	\$165,519	\$157,810	\$45,845	261.04%
Average payment per case	\$286.86	\$290.63	\$208.39	37.66%
Average payment per recipient	\$73.79	\$75.36	\$56.32	31.02%
Number of cases with benefits reduced to zero	13	12	5	160.00%
Number of recipients with benefits reduced to zero	54	49	26	107.69%
Number of adult recipients with benefit reduced to zero	23	20	9	155.56%
Number of child recipients with benefit reduced to zero	31	29	17	82.35%

**Note:**

All data July 2014 and following will be broken out according to the new DFR region structure effective July 1 2014.

Source:



## DIVISION OF FAMILY RESOURCES

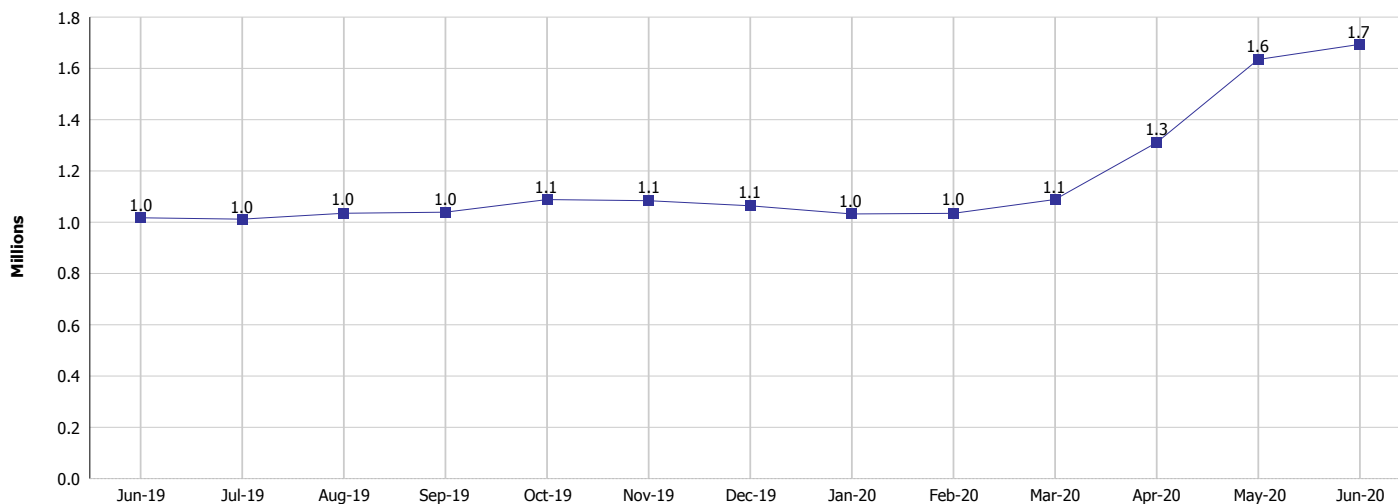
### Monthly Management Report

Reporting Month: June 2020

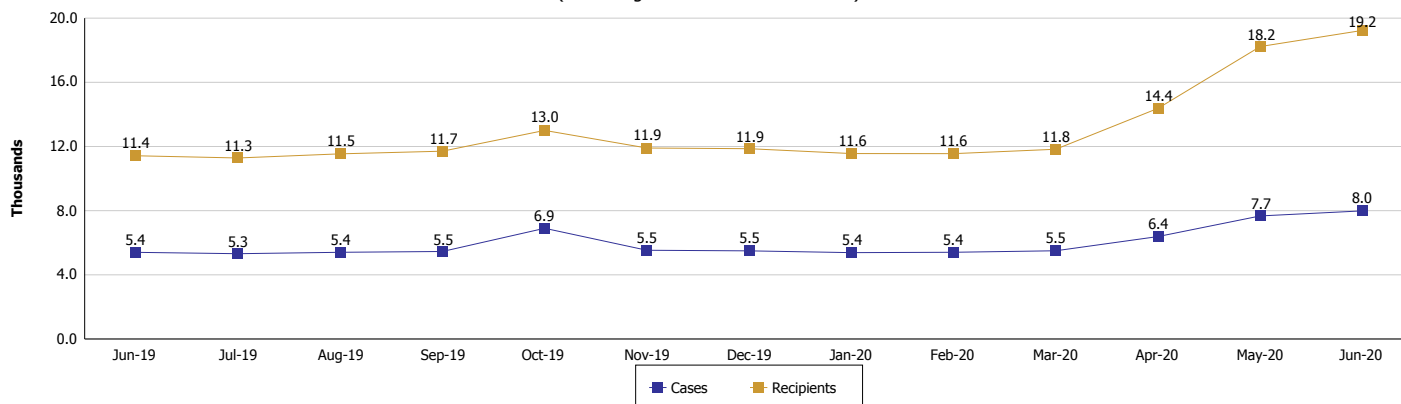
Location: Statewide

#### TEMPORARY ASSISTANCE FOR NEEDY FAMILIES (TANF)

**TANF Cash Assistance**  
(TANF Regular and TANF Two-Parent)



**TANF Cases and Recipients**  
(TANF Regular and TANF Two-Parent)



**Note:**

All data July 2014 and following will be broken out according to the new DFR region structure effective July 1 2014.



## DIVISION OF FAMILY RESOURCES

### Monthly Management Report

Reporting Month: June 2020

Location: Statewide

#### SUPPLEMENTAL NUTRITION ASSISTANCE PROGRAM (SNAP)

	June 2020	May 2020	June 2019	Annual Change
Total issuance	\$117,716,282	\$118,583,267	\$69,339,552	69.77%
Number of households receiving SNAP benefits	306,765	301,454	267,100	14.85%
Number of recipients	670,509	661,146	588,987	13.84%
Average issuance per household	\$383.73	\$393.37	\$259.60	47.82%
Average issuance per recipient	\$175.56	\$179.36	\$117.73	49.13%

**Note:**

All data July 2014 and following will be broken out according to the new DFR region structure effective July 1 2014.

#### SNAP ERROR RATES

	February 2020	January 2020	December 2019	Cumulative FFY 2019
FFY Cumulative Positive Error Rate	7.37%	6.22%	8.57%	8.30%
Monthly Positive Error Rate	10.67%	1.28%	9.39%	NA
FFY Cumulative Negative Error Rate	41.56%	37.55%	34.74%	40.03%
Monthly Negative Error Rate	60.00%	46.03%	22.22%	NA

**Note:**

All data July 2014 and following will be broken out according to the new DFR region structure effective July 1 2014.

**Notes:**

Reporting periods for SNAP Error Rates reflect the review period and Federal submission deadline. The month reported above is the month in which an action was taken included in the review sample.

Positive actions are those which produced an issuance of benefits to a household. Negative actions are those which closed or denied benefits to a household.

Error Rate data is reported by the state before the federal agency has accepted and finalized the results. This rate is subject to revision based upon: completion and submission of outstanding reviews; final review corrections; and completion of previously dropped reviews. Monthly numbers are taken from end-of-month totals. The error status of cases may be changed by the State or Federal Review process, which would cause a change that might not be reflected in the previous monthly numbers.



# DIVISION OF FAMILY RESOURCES

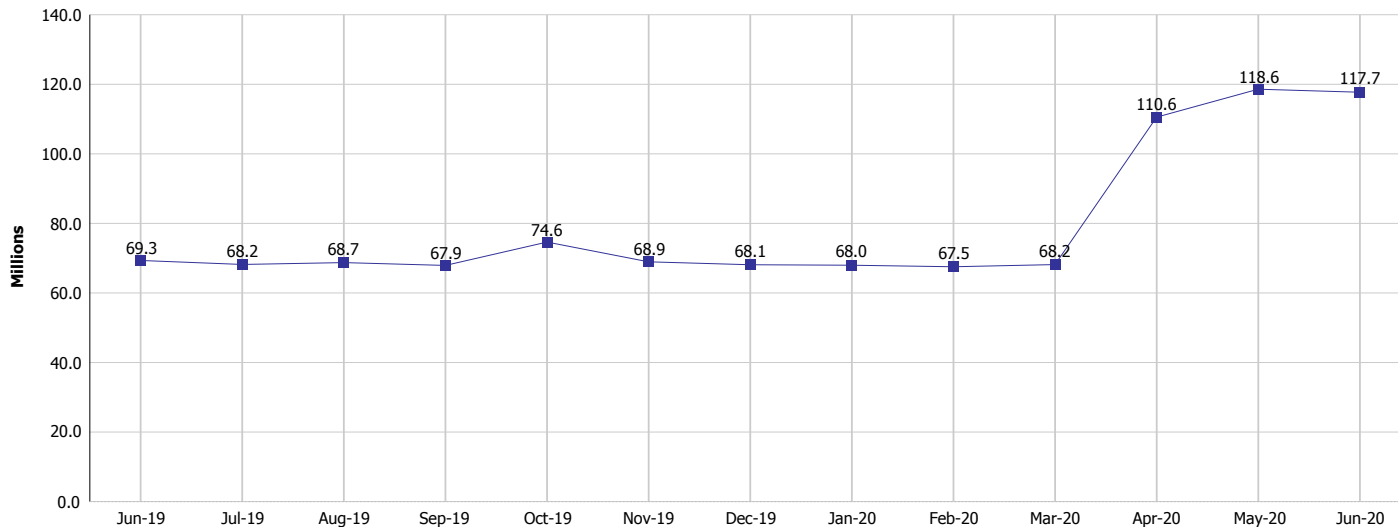
## Monthly Management Report

Reporting Month: June 2020

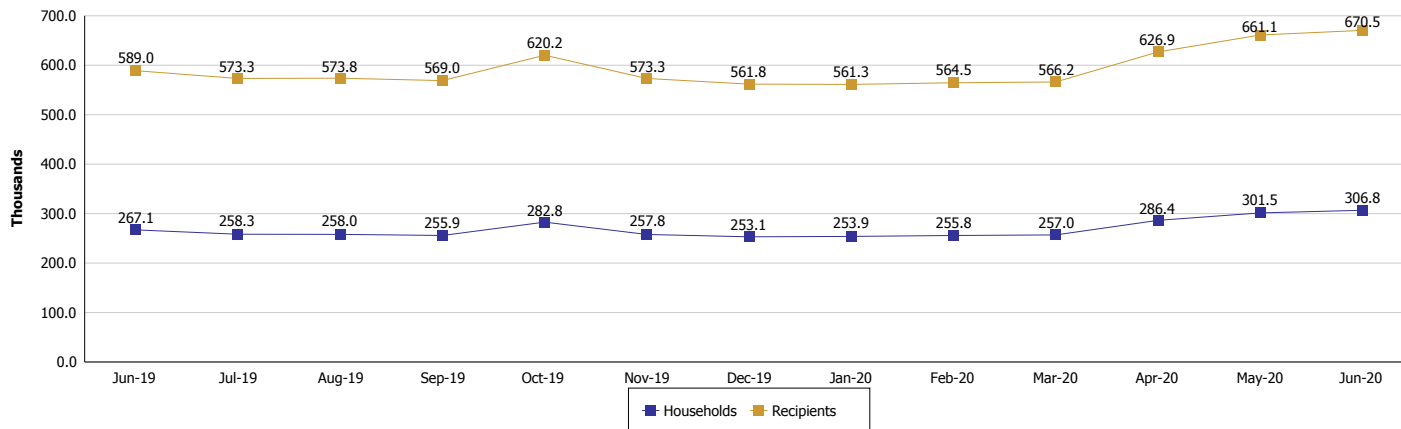
Location: Statewide

### SUPPLEMENTAL NUTRITION ASSISTANCE PROGRAM (SNAP)

#### SNAP Issuance



#### SNAP Households and Recipients



**Note:**

All data July 2014 and following will be broken out according to the new DFR region structure effective July 1 2014.



## DIVISION OF FAMILY RESOURCES

### Monthly Management Report

Reporting Month: June 2020

Location: Statewide

#### HIP 2.0 and SNAP

	June 2020	May 2020	June 2019	Annual Change
Total HIP 2.0 Members	512,919	490,883	427,799	19.90%
HIP Members also SNAP Recipients	182,672	177,839	139,873	30.60%
Percentage HIP Members SNAP Recipients	35.6%	36.2%	32.7%	2.92
HIP Members SNAP ABAWDs	5,772	7,686	3,969	45.43%
Percentage HIP Members SNAP ABAWDs	1.1%	1.6%	0.9%	0.2

**Note:**

All data July 2014 and following will be broken out according to the new DFR region structure effective July 1 2014.



## DIVISION OF FAMILY RESOURCES

### Monthly Management Report

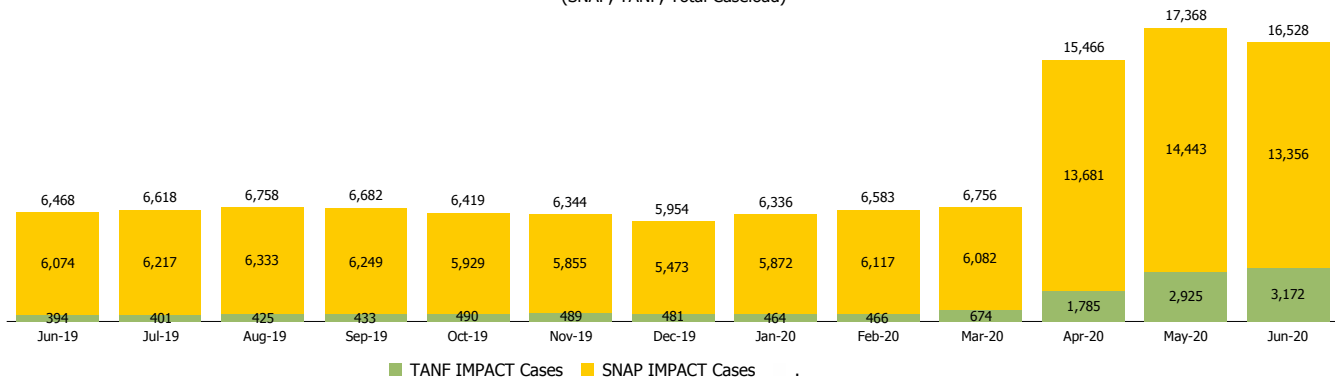
Reporting Month: June 2020

Location: Statewide

#### INDIANA MANPOWER PLACEMENT AND COMPREHENSIVE TRAINING (IMPACT)

	June 2020	May 2020	June 2019	Annual Change
Number of IMPACT cases	16,528	17,368	6,468	155.53%
Number of TANF IMPACT adults	3,172	2,925	394	705.08%
Number of SNAP IMPACT Cases	13,356	14,443	6,074	119.89%
Total number of adults employed	1,333	1,001	1,030	29.42%
Number of TANF IMPACT adults newly employed (within past 30 days)	208	137	69	201.45%
Number of SNAP IMPACT adults employed	1,125	864	961	17.07%
Total number of adults ineligible due to employment	3,267	1,707	4,800	-31.94%
Number of TANF adults ineligible due to employment	10	5	6	66.67%
Number of SNAP adults ineligible due to employment	3,257	1,702	4,794	-32.06%

**IMPACT Caseloads**  
(SNAP, TANF, Total Caseload)



**Note:**

All data July 2014 and following will be broken out according to the new DFR region structure effective July 1 2014.