



## DIVISION OF FAMILY RESOURCES

# Monthly Management Report July 2013

### State of Indiana

Michael R. Pence  
Governor

### Family and Social Services Administration

Debra F. Minott  
Secretary

### Division of Family Resources

Lance Rhodes  
Director

For questions regarding data on this report contact:  
[office.Communications@fssa.IN.gov](mailto:office.Communications@fssa.IN.gov)



## State of Indiana

Published August 2013



## DIVISION OF FAMILY RESOURCES

### Monthly Management Report

Reporting Month: July 2013

Location: Statewide

#### TEMPORARY ASSISTANCE FOR NEEDY FAMILIES (TANF)

Child-Only and One-Parent Families	July 2013	June 2013	July 2012	Annual Change
Number of families receiving TANF Grants	11,272	11,382	14,342	-21.41%
Total number of grant recipients	24,705	24,948	33,160	-25.50%
Number of adult grant recipients	4,735	4,837	7,420	-36.19%
Number of child grant recipients	19,970	20,111	25,740	-22.42%
Total payments	\$2,072,703	\$2,109,468	\$2,670,729	-22.39%
Average payment per case	\$183.88	\$185.33	\$186.22	-1.25%
Average payment per recipient	\$83.90	\$84.55	\$80.54	4.17%
Number of cases with benefits reduced to zero	490	461	661	-25.87%
Number of recipients with benefits reduced to zero	1,089	1,007	1,607	-32.23%
Number of adult recipients with benefit reduced to zero	291	264	465	-37.42%
Number of child recipients with benefit reduced to zero	798	743	1,142	-30.12%

Two-Parent Families	July 2013	June 2013	July 2012	Annual Change
Number of families receiving TANF Grants	794	809	1,050	-24.38%
Total number of grant recipients	3,287	3,337	4,262	-22.88%
Number of adult grant recipients	1,288	1,312	1,671	-22.92%
Number of child grant recipients	1,999	2,025	2,591	-22.85%
Total payments	\$168,546	\$175,912	\$230,129	-26.76%
Average payment per case	\$212.27	\$217.44	\$219.17	-3.15%
Average payment per recipient	\$51.28	\$52.72	\$54.00	-5.04%
Number of cases with benefits reduced to zero	32	30	41	-21.95%
Number of recipients with benefits reduced to zero	106	104	163	-34.97%
Number of adult recipients with benefit reduced to zero	47	46	60	-21.67%
Number of child recipients with benefit reduced to zero	59	58	103	-42.72%



## DIVISION OF FAMILY RESOURCES

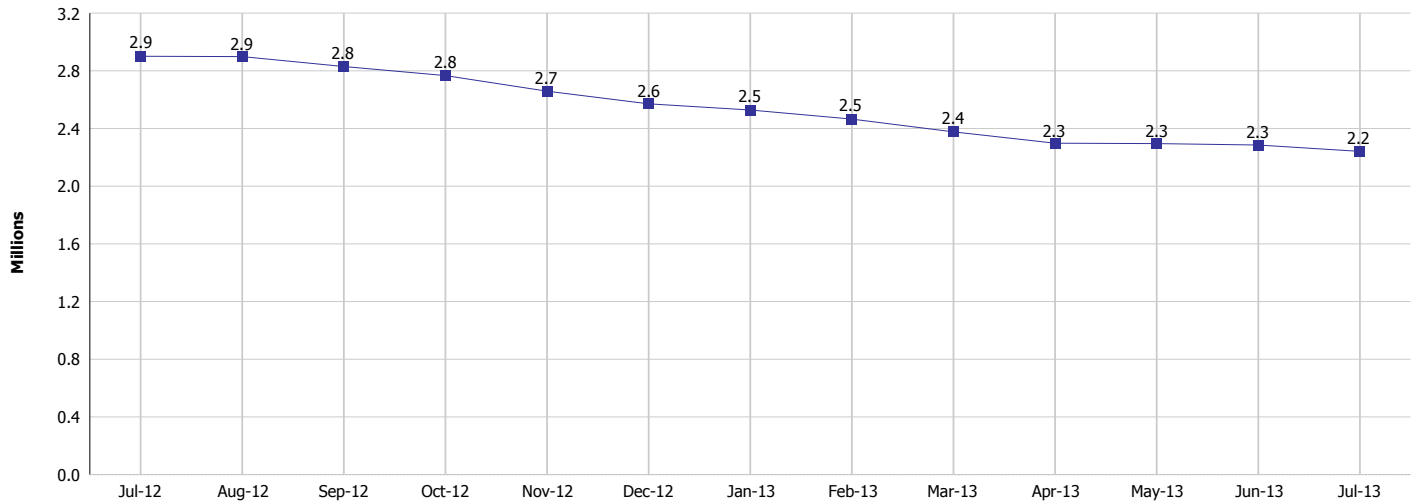
### Monthly Management Report

Reporting Month: July 2013

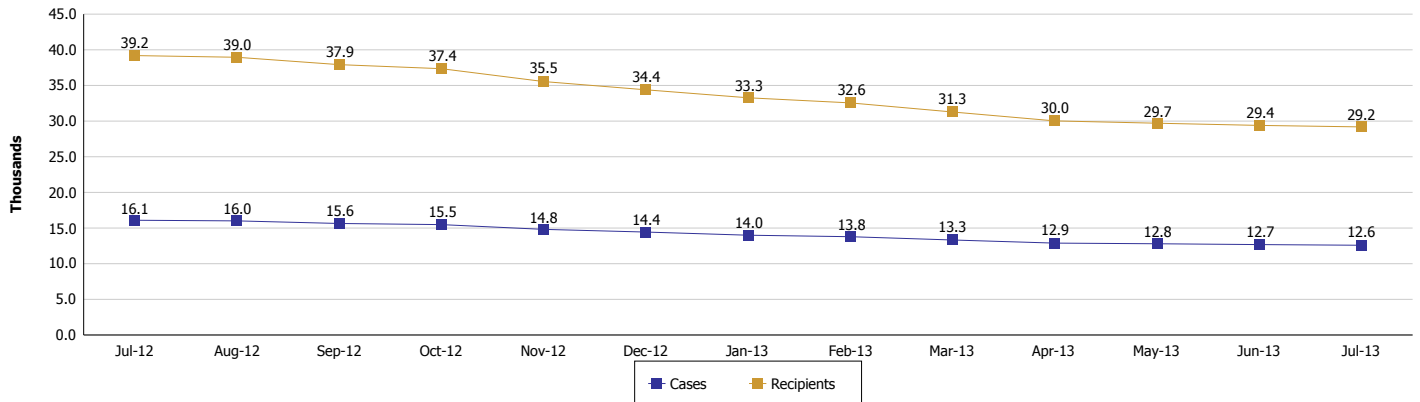
Location: Statewide

#### TEMPORARY ASSISTANCE FOR NEEDY FAMILIES (TANF)

**TANF Cash Assistance**  
(TANF Regular and TANF UP)



**TANF Cases and Recipients**  
(TANF Regular and TANF UP)





## DIVISION OF FAMILY RESOURCES

### Monthly Management Report

Reporting Month: July 2013

Location: Statewide

#### SUPPLEMENTAL NUTRITION ASSISTANCE PROGRAM (SNAP)

	July 2013	June 2013	July 2012	Annual Change
Total issuance	\$123,234,405	\$121,529,140	\$124,227,075	-0.80%
Number of households receiving SNAP benefits	416,749	416,111	405,208	2.85%
Number of recipients	925,399	924,180	912,123	1.46%
Average issuance per household	\$295.70	\$292.06	\$306.58	-3.55%
Average issuance per recipient	\$133.17	\$131.50	\$136.20	-2.22%

#### SNAP ERROR RATES

	March 2013	February 2013	January 2013	Cumulative FFY 2012
FFY Cumulative Positive Error Rate	4.13%	3.53%	4.05%	2.90%
Monthly Positive Error Rate	7.39%	1.59%	2.01%	NA
FFY Cumulative Negative Error Rate	20.76%	21.18%	21.93%	17.40%
Monthly Negative Error Rate	18.52%	18.33%	25.45%	NA

#### Notes:

Reporting periods for SNAP Error Rates reflect the review period and Federal submission deadline. The month reported above is the month in which an action was taken included in the review sample.

Positive actions are those which produced an issuance of benefits to a household. Negative actions are those which closed or denied benefits to a household.

Error Rate data is reported by the state before the federal agency has accepted and finalized the results. This rate is subject to revision based upon: completion and submission of outstanding reviews; final review corrections; and completion of previously dropped reviews. Monthly numbers are taken from end-of-month totals. The error status of cases may be changed by the State or Federal Review process, which would cause a change that might not be reflected in the previous monthly numbers.



# DIVISION OF FAMILY RESOURCES

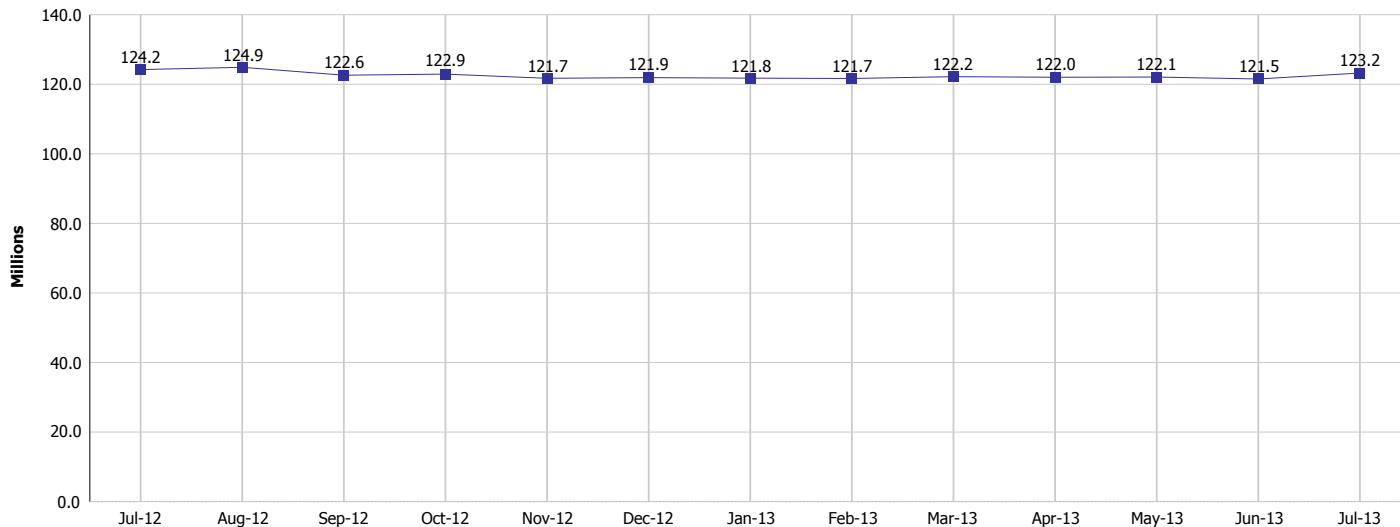
## Monthly Management Report

Reporting Month: July 2013

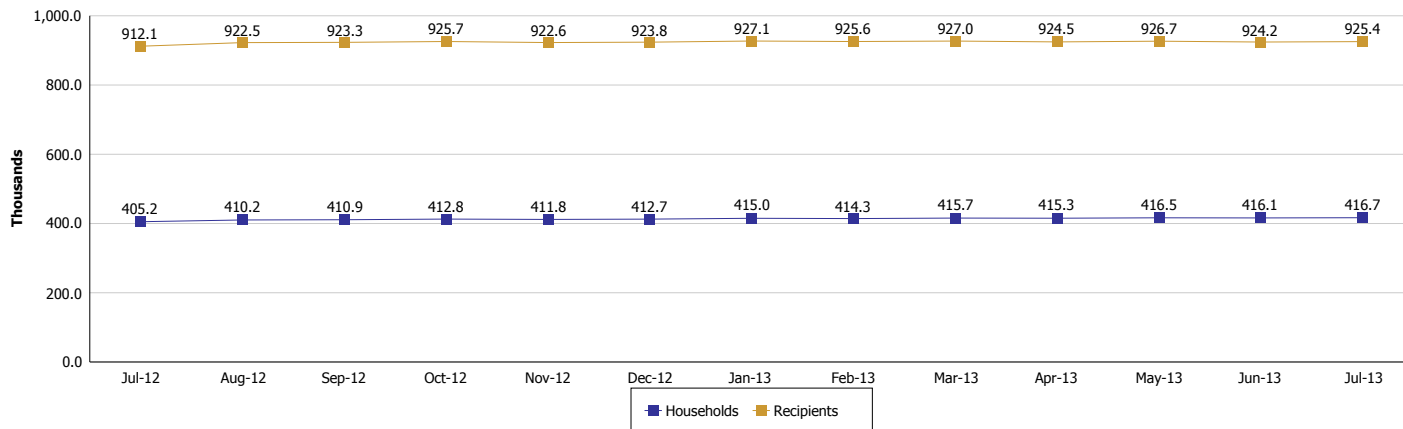
Location: Statewide

### SUPPLEMENTAL NUTRITION ASSISTANCE PROGRAM (SNAP)

#### SNAP Issuance



#### SNAP Households and Recipients





## DIVISION OF FAMILY RESOURCES

### Monthly Management Report

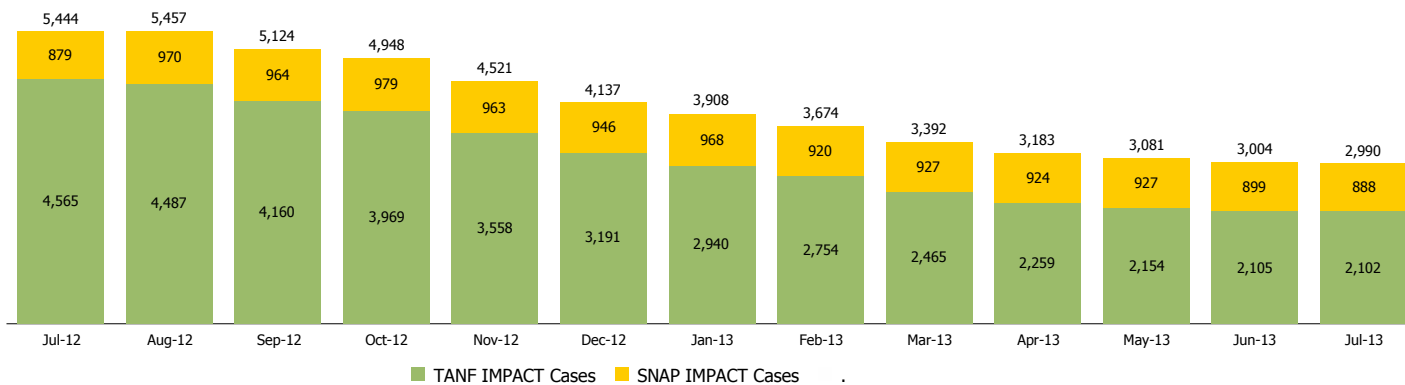
Reporting Month: July 2013

Location: Statewide

#### INDIANA MANPOWER PLACEMENT AND COMPREHENSIVE TRAINING (IMPACT)

	July 2013	June 2013	July 2012	Annual Change
Number of IMPACT cases	2,990	3,004	5,444	-45.08%
Number of TANF IMPACT Cases	2,102	2,105	4,565	-53.95%
Number of SNAP IMPACT Cases	888	899	879	1.02%
Total number of adults employed	274	246	345	-20.58%
Number of TANF IMPACT adults employed	215	179	292	-26.37%
Number of SNAP IMPACT adults employed	59	67	53	11.32%
Total number of adults ineligible due to employment	1,782	1,933	1,626	9.59%
Number of TANF adults ineligible due to employment	27	30	23	17.39%
Number of SNAP adults ineligible due to employment	1,755	1,903	1,603	9.48%

**IMPACT Caseloads**  
(SNAP, TANF, Total Caseload)





## DIVISION OF FAMILY RESOURCES

### Monthly Management Report

Reporting Month: July 2013

Location: Statewide

#### CHILD CARE

	July 2013	June 2013	July 2012	Annual Change
Total Subsidized Child Care Payments	\$14,380,487	\$13,427,952	\$19,144,805	-24.89%
Total Number of CCDF Children	36,533	36,898	33,648	8.57%
Total Number of licensed Child Care Homes	2,815	2,826	2,875	-2.09%
Licensed Capacity of Child Care Homes	35,727	35,859	36,183	-1.26%
Total Number of Licensed CC Centers	588	588	595	-1.18%
Licensed Capacity of CC Centers	64,106	63,821	64,341	-0.37%
Total Number of Registered Ministries (Capacity not Regulated)	663	664	719	-7.79%