



DIVISION OF FAMILY RESOURCES

Monthly Management Report September 2021

State of Indiana

Eric Holcomb
Governor

Family and Social Services Administration

Dan Rusyniak, MD
Secretary

Division of Family Resources

Adrienne Shields
Director

For questions regarding data on this report contact:
office.Communications@fssa.IN.gov



State of Indiana

Published October 2021



DIVISION OF FAMILY RESOURCES

Monthly Management Report

Reporting Month: September 2021

Location: Statewide

TEMPORARY ASSISTANCE FOR NEEDY FAMILIES (TANF)

Child-Only and One-Parent Families	Sep 30, 2021	August 2021	September 2020	Annual Change
Number of families receiving TANF Grants	6,154	6,397	7,330	-16.04%
Total number of grant recipients	13,713	14,482	16,527	-17.03%
Number of adult grant recipients	2,618	2,987	3,351	-21.87%
Number of child grant recipients	11,095	11,495	13,176	-15.79%
Total payments	\$1,293,414	\$6,701,893	\$1,525,648	-15.22%
Average payment per case	\$210.17	\$1,047.66	\$208.14	0.98%
Average payment per recipient	\$94.32	\$462.77	\$92.31	2.18%
Number of cases with benefits reduced to zero	362	22	330	9.70%
Number of recipients with benefits reduced to zero	904	23	804	12.44%
Number of adult recipients with benefit reduced to zero	240	7	234	2.56%
Number of child recipients with benefit reduced to zero	664	16	570	16.49%

Two-Parent Families	Sep 30, 2021	August 2021	September 2020	Annual Change
Number of families receiving TANF Grants	484	1,114	620	-21.94%
Total number of grant recipients	1,639	3,159	2,135	-23.23%
Number of adult grant recipients	588	918	721	-18.45%
Number of child grant recipients	1,051	2,241	1,414	-25.67%
Total payments	\$134,796	\$1,427,476	\$167,506	-19.53%
Average payment per case	\$278.50	\$1,281.40	\$270.17	3.08%
Average payment per recipient	\$82.24	\$451.88	\$78.46	4.83%
Number of cases with benefits reduced to zero	14	3	44	-68.18%
Number of recipients with benefits reduced to zero	67	4	177	-62.15%
Number of adult recipients with benefit reduced to zero	28	1	72	-61.11%
Number of child recipients with benefit reduced to zero	39	3	105	-62.86%

Note:

*For August 2021, a one time payment of \$400 per recipient was included in the Total payments and Average payments.

Source:



DIVISION OF FAMILY RESOURCES

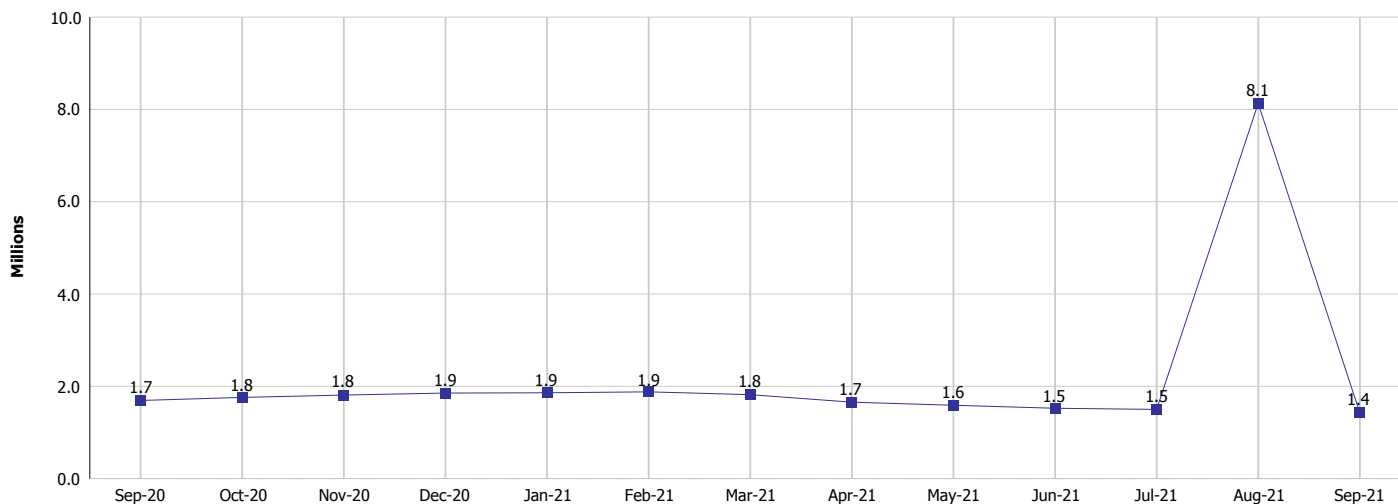
Monthly Management Report

Reporting Month: September 2021

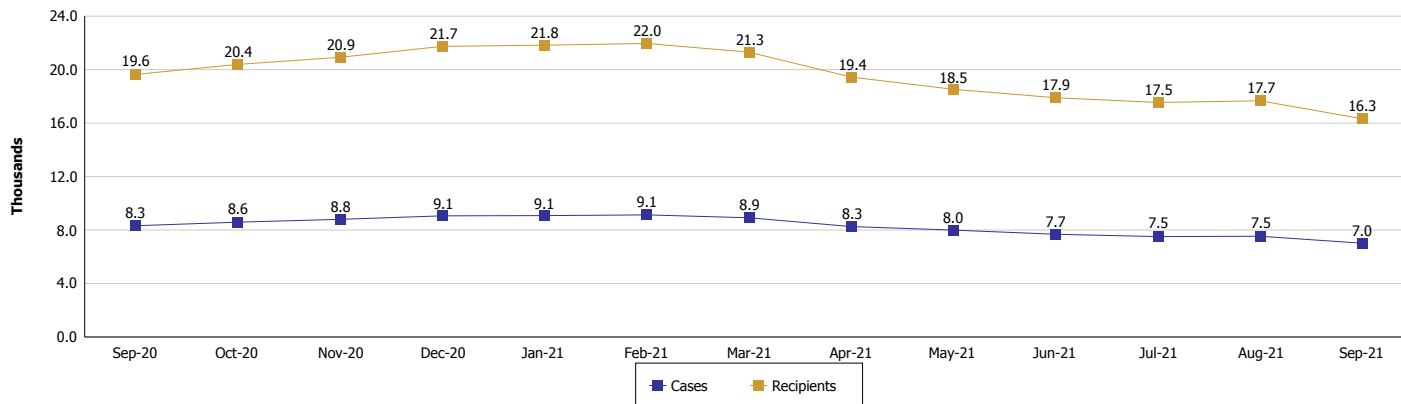
Location: Statewide

TEMPORARY ASSISTANCE FOR NEEDY FAMILIES (TANF)

TANF Cash Assistance (TANF Regular and TANF Two-Parent)



TANF Cases and Recipients (TANF Regular and TANF Two-Parent)



Note:

*For August 2021, a one time payment of \$400 per recipient was included in the Total payments and Average payments.



DIVISION OF FAMILY RESOURCES

Monthly Management Report

Reporting Month: September 2021

Location: Statewide

SUPPLEMENTAL NUTRITION ASSISTANCE PROGRAM (SNAP)

	September 2021	August 2021	September 2020	Annual Change
Total issuance	\$144,891,957	\$143,491,661	\$115,962,141	24.95%
Number of households receiving SNAP benefits	292,275	291,435	300,332	-2.68%
Number of recipients	622,157	619,201	646,126	-3.71%
Average issuance per household	\$495.74	\$492.36	\$386.11	28.39%
Average issuance per recipient	\$232.89	\$231.74	\$179.47	29.76%

Note:

All data July 2014 and following will be broken out according to the new DFR region structure effective July 1 2014.

SNAP ERROR RATES

	Cumulative FFY
FFY Cumulative Positive Error Rate	
Monthly Positive Error Rate	NA
FFY Cumulative Negative Error Rate	
Monthly Negative Error Rate	NA

Note:

All data July 2014 and following will be broken out according to the new DFR region structure effective July 1 2014.

Notes:

Reporting periods for SNAP Error Rates reflect the review period and Federal submission deadline. The month reported above is the month in which an action was taken included in the review sample.

Positive actions are those which produced an issuance of benefits to a household. Negative actions are those which closed or denied benefits to a household.

Error Rate data is reported by the state before the federal agency has accepted and finalized the results. This rate is subject to revision based upon: completion and submission of outstanding reviews; final review corrections; and completion of previously dropped reviews. Monthly numbers are taken from end-of-month totals. The error status of cases may be changed by the State or Federal Review process, which would cause a change that might not be reflected in the previous monthly numbers.



DIVISION OF FAMILY RESOURCES

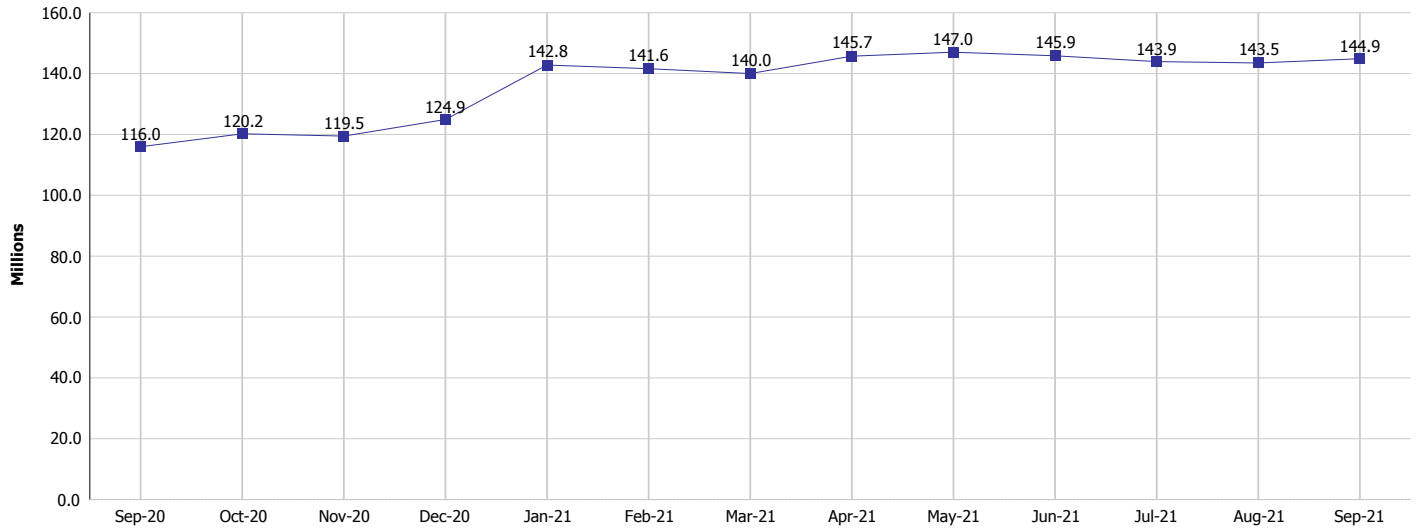
Monthly Management Report

Reporting Month: September 2021

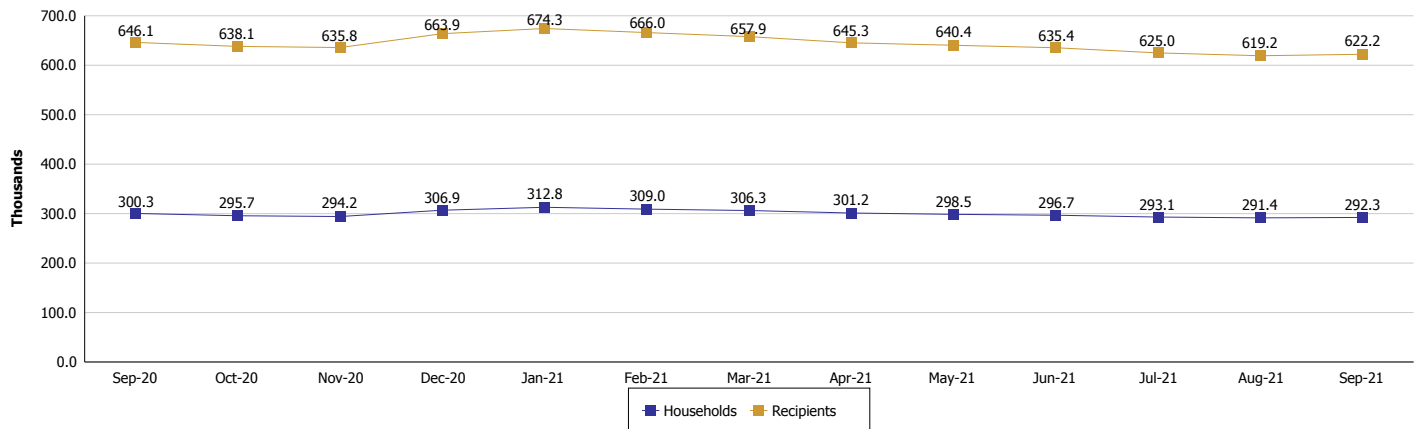
Location: Statewide

SUPPLEMENTAL NUTRITION ASSISTANCE PROGRAM (SNAP)

SNAP Issuance



SNAP Households and Recipients



Note:

All data July 2014 and following will be broken out according to the new DFR region structure effective July 1 2014.



DIVISION OF FAMILY RESOURCES

Monthly Management Report

Reporting Month: September 2021

Location: Statewide

HIP 2.0 and SNAP

	September 2021	August 2021	September 2020	Annual Change
Total HIP 2.0 Members	715,733	706,930	566,546	26.33%
HIP Members also SNAP Recipients	186,478	185,095	180,488	3.32%
Percentage HIP Members SNAP Recipients	26.1%	26.2%	31.9%	-5.80
HIP Members SNAP ABAWDs	0	0	402	-100.00%
Percentage HIP Members SNAP ABAWDs	0	0	0.1%	-0.1

Note:

All data July 2014 and following will be broken out according to the new DFR region structure effective July 1 2014.



DIVISION OF FAMILY RESOURCES

Monthly Management Report

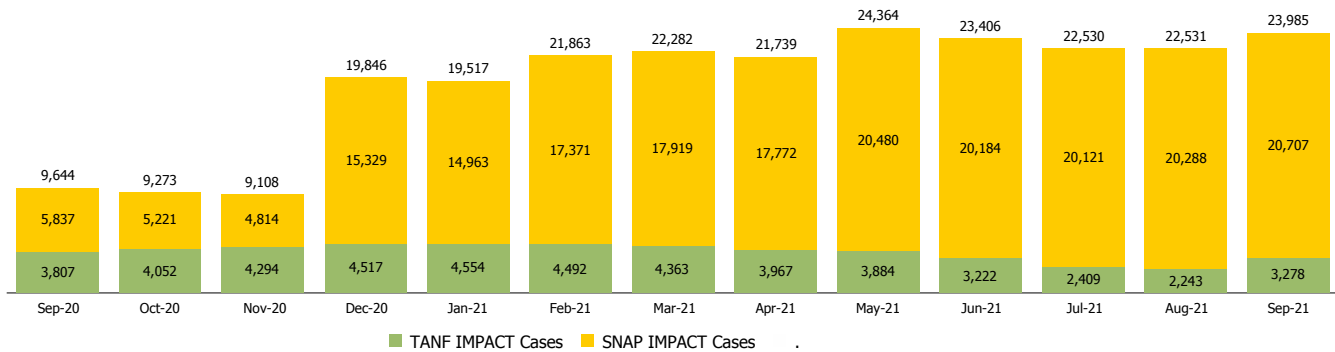
Reporting Month: September 2021

Location: Statewide

INDIANA MANPOWER PLACEMENT AND COMPREHENSIVE TRAINING (IMPACT)

	September 2021	August 2021	September 2020	Annual Change
Number of IMPACT cases	23,985	22,531	9,644	148.70%
Number of TANF IMPACT adults	3,278	2,243	3,807	-13.90%
Number of SNAP IMPACT Cases	20,707	20,288	5,837	254.75%
Total number of adults employed	2,441	3,413	1,024	138.38%
Number of TANF IMPACT adults newly employed (within past 30 days)	163	187	255	-36.08%
Number of SNAP IMPACT adults employed	2,278	3,226	769	196.23%
Total number of adults ineligible due to employment	2,738	2,415	2,893	-5.36%
Number of TANF adults ineligible due to employment	14	14	14	0.00%
Number of SNAP adults ineligible due to employment	2,724	2,401	2,879	-5.38%

IMPACT Caseloads
(SNAP, TANF, Total Caseload)



Note:

All data July 2014 and following will be broken out according to the new DFR region structure effective July 1 2014.