



DIVISION OF FAMILY RESOURCES

Monthly Management Report October 2021

State of Indiana

Eric Holcomb
Governor

Family and Social Services Administration

Dan Rusyniak, MD
Secretary

Division of Family Resources

Adrienne Shields
Director

For questions regarding data on this report contact:
office.Communications@fssa.IN.gov



State of Indiana

Published January 2022



DIVISION OF FAMILY RESOURCES

Monthly Management Report

Reporting Month: October 2021

Location: Statewide

TEMPORARY ASSISTANCE FOR NEEDY FAMILIES (TANF)

Child-Only and One-Parent Families	Oct 31, 2021	September 2021	October 2020	Annual Change
Number of families receiving TANF Grants	5,345	6,154	7,540	-29.11%
Total number of grant recipients	11,413	13,713	17,130	-33.37%
Number of adult grant recipients	1,856	2,618	3,531	-47.44%
Number of child grant recipients	9,557	11,095	13,599	-29.72%
Total payments	\$1,090,125	\$1,293,414	\$1,577,659	-30.90%
Average payment per case	\$203.95	\$210.17	\$209.24	-2.53%
Average payment per recipient	\$95.52	\$94.32	\$92.10	3.71%
Number of cases with benefits reduced to zero	255	362	335	-23.88%
Number of recipients with benefits reduced to zero	592	904	787	-24.78%
Number of adult recipients with benefit reduced to zero	146	240	228	-35.96%
Number of child recipients with benefit reduced to zero	446	664	559	-20.21%

Two-Parent Families	Oct 31, 2021	September 2021	October 2020	Annual Change
Number of families receiving TANF Grants	349	484	675	-48.30%
Total number of grant recipients	1,140	1,639	2,313	-50.71%
Number of adult grant recipients	398	588	764	-47.91%
Number of child grant recipients	742	1,051	1,549	-52.10%
Total payments	\$97,869	\$134,796	\$181,974	-46.22%
Average payment per case	\$280.43	\$278.50	\$269.59	4.02%
Average payment per recipient	\$85.85	\$82.24	\$78.67	9.12%
Number of cases with benefits reduced to zero	9	14	40	-77.50%
Number of recipients with benefits reduced to zero	43	67	162	-73.46%
Number of adult recipients with benefit reduced to zero	18	28	66	-72.73%
Number of child recipients with benefit reduced to zero	25	39	96	-73.96%

Note:

*For August 2021, a one time payment of \$400 per recipient was included in the Total payments and Average payments.

Source:



DIVISION OF FAMILY RESOURCES

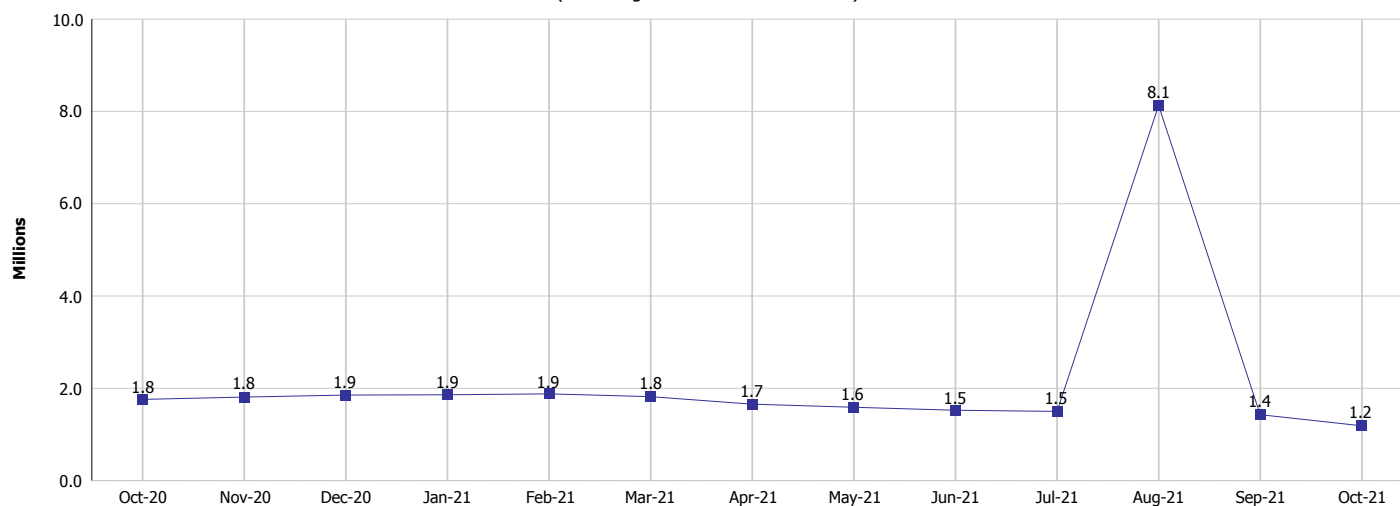
Monthly Management Report

Reporting Month: October 2021

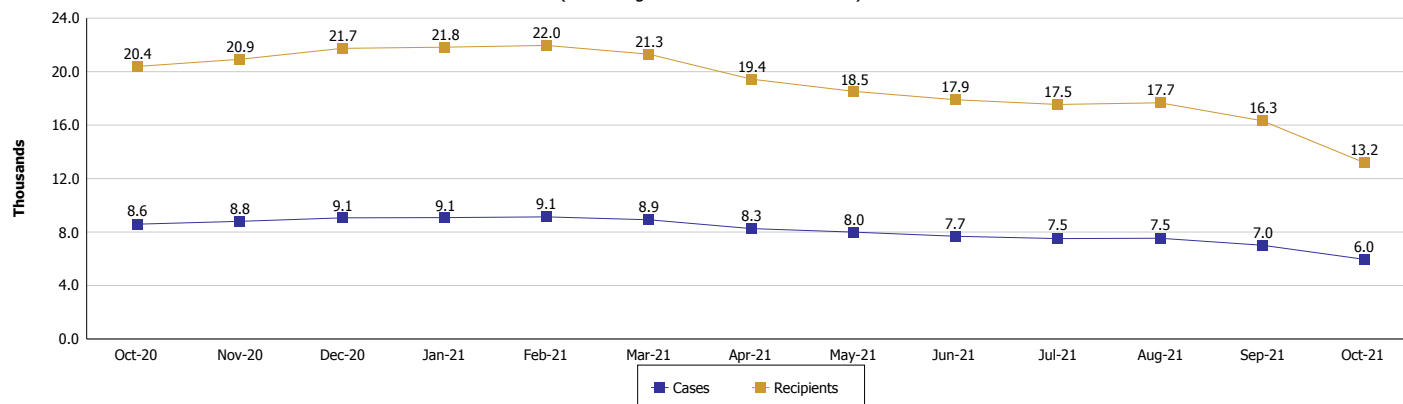
Location: Statewide

TEMPORARY ASSISTANCE FOR NEEDY FAMILIES (TANF)

TANF Cash Assistance
(TANF Regular and TANF Two-Parent)



TANF Cases and Recipients
(TANF Regular and TANF Two-Parent)



Note:

*For August 2021, a one time payment of \$400 per recipient was included in the Total payments and Average payments.

Monthly Management Report

Reporting Month: October 2021 Location: Statewide

SUPPLEMENTAL NUTRITION ASSISTANCE PROGRAM (SNAP)

	October 2021	September 2021	October 2020	Annual Change
Total issuance	\$153,380,697	\$144,891,957	\$120,214,753	27.59%
Number of households receiving SNAP benefits	291,959	292,275	295,693	-1.26%
Number of recipients	621,409	622,157	638,096	-2.62%
Average issuance per household	\$525.35	\$495.74	\$406.55	29.22%
Average issuance per recipient	\$246.83	\$232.89	\$188.40	31.02%

Note:
All data July 2014 and following will be broken out according to the new DFR region structure effective July 1 2014.

SNAP ERROR RATES

	Cumulative FFY
FFY Cumulative Positive Error Rate	
Monthly Positive Error Rate	NA
FFY Cumulative Negative Error Rate	
Monthly Negative Error Rate	NA

Note:
All data July 2014 and following will be broken out according to the new DFR region structure effective July 1 2014.

Notes:
Reporting periods for SNAP Error Rates reflect the review period and Federal submission deadline. The month reported above is the month in which an action was taken included in the review sample.
Positive actions are those which produced an issuance of benefits to a household. Negative actions are those which closed or denied benefits to a household.
Error Rate data is reported by the state before the federal agency has accepted and finalized the results. This rate is subject to revision based upon: completion and submission of outstanding reviews; final review corrections; and completion of previously dropped reviews. Monthly numbers are taken from end-of-month totals. The error status of cases may be changed by the State or Federal Review process, which would cause a change that might not be reflected in the previous monthly numbers.



DIVISION OF FAMILY RESOURCES

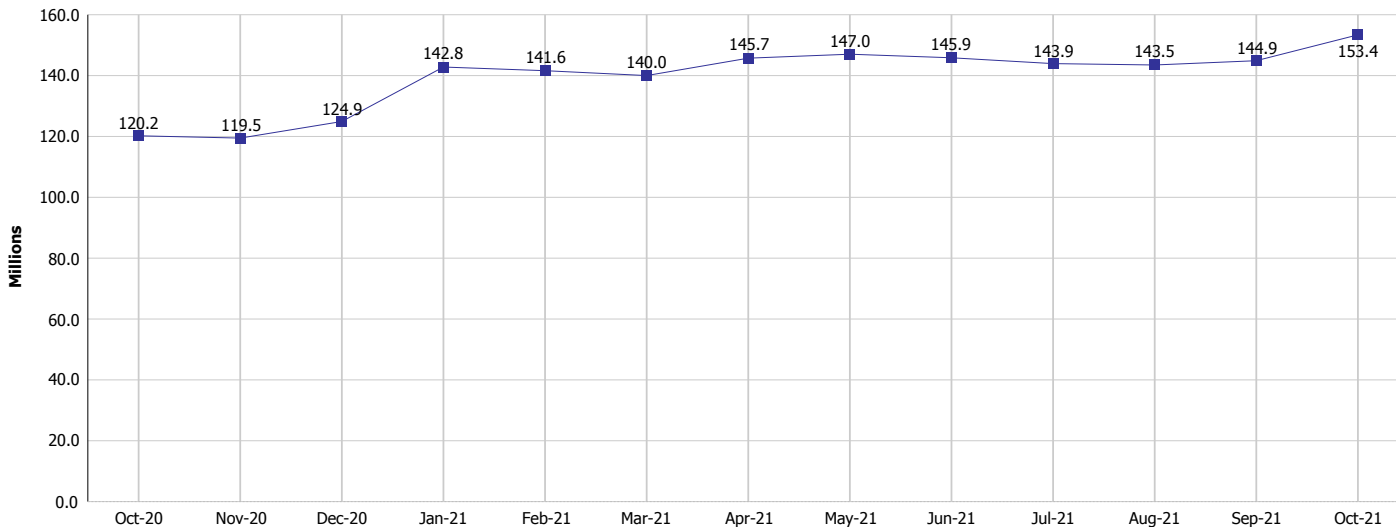
Monthly Management Report

Reporting Month: October 2021

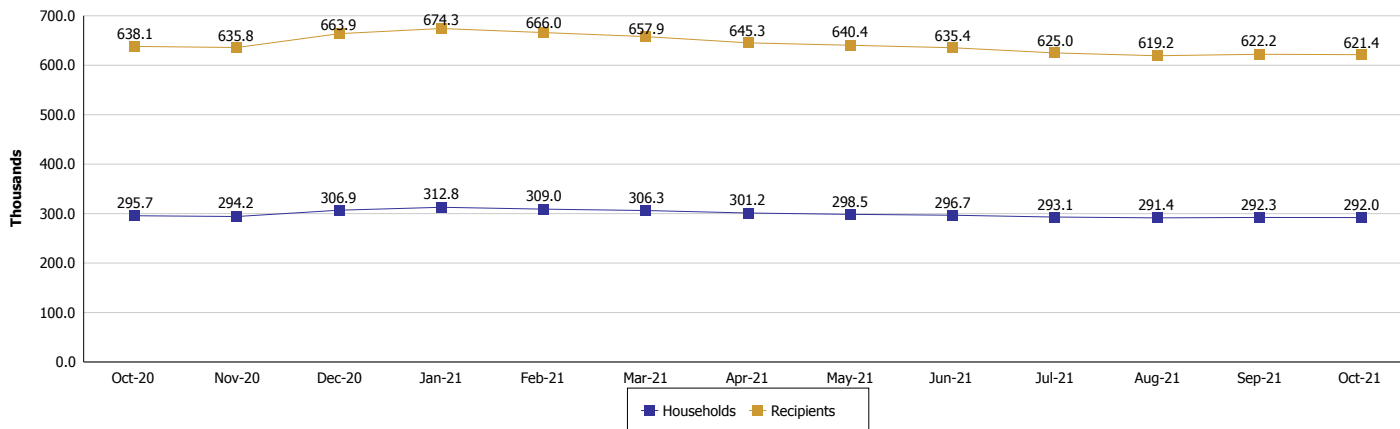
Location: Statewide

SUPPLEMENTAL NUTRITION ASSISTANCE PROGRAM (SNAP)

SNAP Issuance



SNAP Households and Recipients



Note:

All data July 2014 and following will be broken out according to the new DFR region structure effective July 1 2014.



DIVISION OF FAMILY RESOURCES

Monthly Management Report

Reporting Month: October 2021

Location: Statewide

HIP 2.0 and SNAP

	October 2021	September 2021	October 2020	Annual Change
Total HIP 2.0 Members	722,799	715,733	583,117	23.95%
HIP Members also SNAP Recipients	185,780	186,478	180,163	3.12%
Percentage HIP Members SNAP Recipients	25.7%	26.1%	30.9%	-5.19
HIP Members SNAP ABAWDs	0	0	0	0%
Percentage HIP Members SNAP ABAWDs	0	0	0	0.0

Note:

All data July 2014 and following will be broken out according to the new DFR region structure effective July 1 2014.



DIVISION OF FAMILY RESOURCES

Monthly Management Report

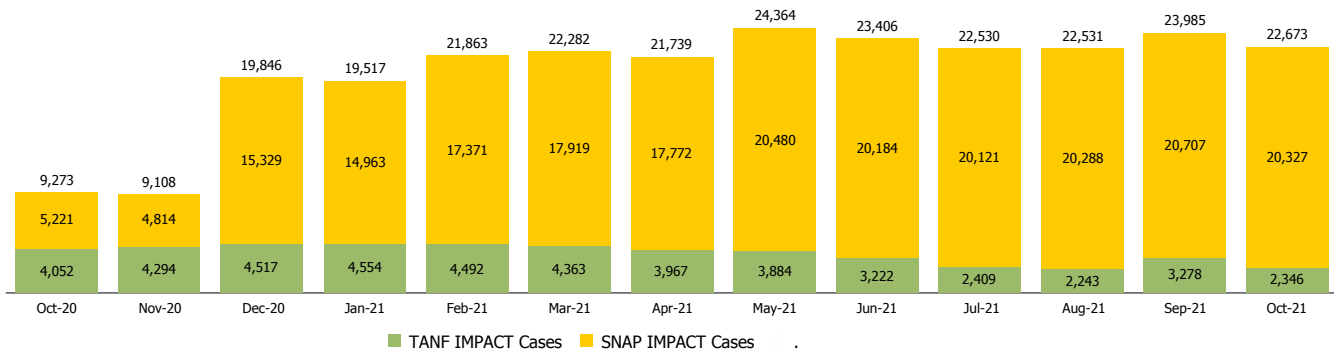
Reporting Month: October 2021

Location: Statewide

INDIANA MANPOWER PLACEMENT AND COMPREHENSIVE TRAINING (IMPACT)

	October 2021	September 2021	October 2020	Annual Change
Number of IMPACT cases	22,673	23,985	9,273	144.51%
Number of TANF IMPACT adults	2,346	3,278	4,052	-42.10%
Number of SNAP IMPACT Cases	20,327	20,707	5,221	289.33%
Total number of adults employed	2,548	2,441	734	247.14%
Number of TANF IMPACT adults newly employed (within past 30 days)	118	163	173	-31.79%
Number of SNAP IMPACT adults employed	2,430	2,278	561	333.16%
Total number of adults ineligible due to employment	2,235	2,738	2,925	-23.59%
Number of TANF adults ineligible due to employment	18	14	26	-30.77%
Number of SNAP adults ineligible due to employment	2,217	2,724	2,899	-23.53%

IMPACT Caseloads
(SNAP, TANF, Total Caseload)



Note:

All data July 2014 and following will be broken out according to the new DFR region structure effective July 1 2014.