



DIVISION OF FAMILY RESOURCES

Monthly Management Report November 2020

State of Indiana

Eric Holcomb
Governor

Family and Social Services Administration

Jennifer Sullivan, M.D.
Secretary

Division of Family Resources

Adrienne Shields
Director

For questions regarding data on this report contact:
office.Communications@fssa.IN.gov



State of Indiana

Published December 2020



DIVISION OF FAMILY RESOURCES

Monthly Management Report

Reporting Month: November 2020

Location: Statewide

TEMPORARY ASSISTANCE FOR NEEDY FAMILIES (TANF)

Child-Only and One-Parent Families	Nov 30, 2020	October 2020	November 2019	Annual Change
Number of families receiving TANF Grants	7,690	7,540	5,231	47.01%
Total number of grant recipients	17,466	17,130	10,913	60.05%
Number of adult grant recipients	3,664	3,531	1,493	145.41%
Number of child grant recipients	13,802	13,599	9,420	46.52%
Total payments	\$1,617,230	\$1,577,659	\$1,032,949	56.56%
Average payment per case	\$210.30	\$209.24	\$197.47	6.50%
Average payment per recipient	\$92.59	\$92.10	\$94.65	-2.18%
Number of cases with benefits reduced to zero	342	335	78	338.46%
Number of recipients with benefits reduced to zero	797	787	164	385.98%
Number of adult recipients with benefit reduced to zero	227	228	36	530.56%
Number of child recipients with benefit reduced to zero	570	559	128	345.31%

Two-Parent Families	Nov 30, 2020	October 2020	November 2019	Annual Change
Number of families receiving TANF Grants	720	675	217	231.80%
Total number of grant recipients	2,465	2,313	803	206.97%
Number of adult grant recipients	812	764	284	185.92%
Number of child grant recipients	1,653	1,549	519	218.50%
Total payments	\$192,995	\$181,974	\$51,088	277.77%
Average payment per case	\$268.05	\$269.59	\$235.43	13.86%
Average payment per recipient	\$78.29	\$78.67	\$63.62	23.06%
Number of cases with benefits reduced to zero	50	40	6	733.33%
Number of recipients with benefits reduced to zero	196	162	25	684.00%
Number of adult recipients with benefit reduced to zero	77	66	10	670.00%
Number of child recipients with benefit reduced to zero	119	96	15	693.33%

Note:

All data July 2014 and following will be broken out according to the new DFR region structure effective July 1 2014.

Source:



DIVISION OF FAMILY RESOURCES

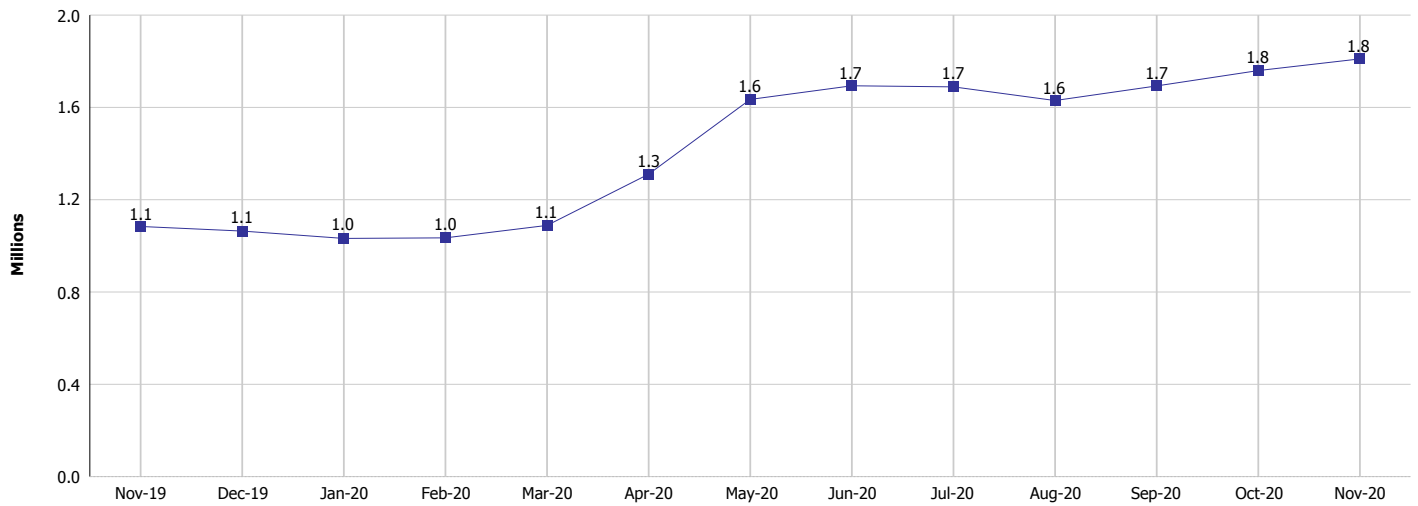
Monthly Management Report

Reporting Month: November 2020

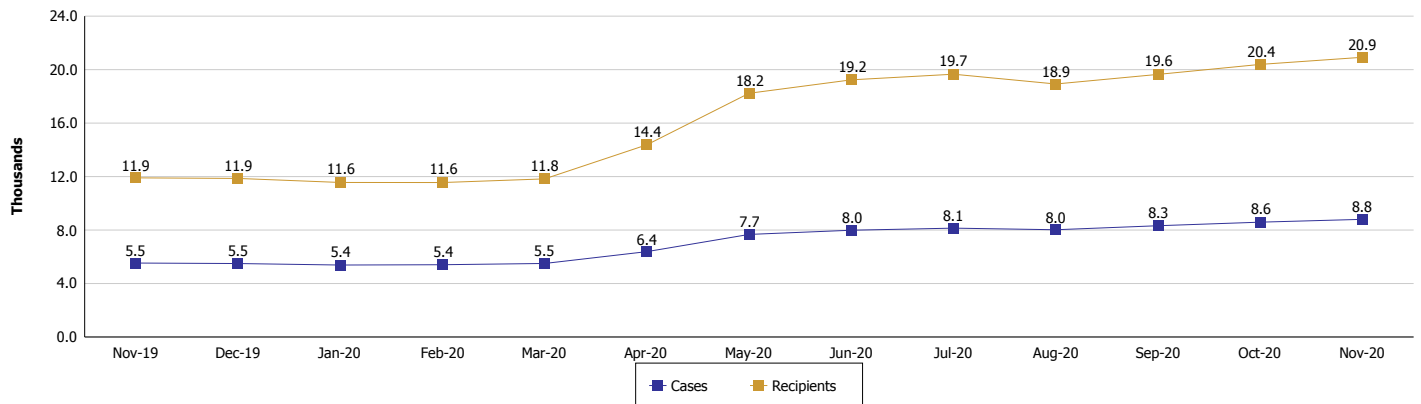
Location: Statewide

TEMPORARY ASSISTANCE FOR NEEDY FAMILIES (TANF)

TANF Cash Assistance
(TANF Regular and TANF Two-Parent)



TANF Cases and Recipients
(TANF Regular and TANF Two-Parent)



Note:

All data July 2014 and following will be broken out according to the new DFR region structure effective July 1 2014.



DIVISION OF FAMILY RESOURCES

Monthly Management Report

Reporting Month: November 2020

Location: Statewide

SUPPLEMENTAL NUTRITION ASSISTANCE PROGRAM (SNAP)

	November 2020	October 2020	November 2019	Annual Change
Total issuance	\$119,463,671	\$120,214,753	\$67,528,118	76.91%
Number of households receiving SNAP benefits	294,168	295,693	255,188	15.28%
Number of recipients	635,829	638,096	566,721	12.19%
Average issuance per household	\$406.11	\$406.55	\$264.62	53.47%
Average issuance per recipient	\$187.89	\$188.40	\$119.16	57.68%

Note:

All data July 2014 and following will be broken out according to the new DFR region structure effective July 1 2014.

SNAP ERROR RATES

	June 2020	Cumulative FFY
FFY Cumulative Positive Error Rate	7.65%	
Monthly Positive Error Rate	9.49%	NA
FFY Cumulative Negative Error Rate	45.55%	
Monthly Negative Error Rate	60.00%	NA

Note:

All data July 2014 and following will be broken out according to the new DFR region structure effective July 1 2014.

Notes:

Reporting periods for SNAP Error Rates reflect the review period and Federal submission deadline. The month reported above is the month in which an action was taken included in the review sample.

Positive actions are those which produced an issuance of benefits to a household. Negative actions are those which closed or denied benefits to a household.

Error Rate data is reported by the state before the federal agency has accepted and finalized the results. This rate is subject to revision based upon: completion and submission of outstanding reviews; final review corrections; and completion of previously dropped reviews. Monthly numbers are taken from end-of-month totals. The error status of cases may be changed by the State or Federal Review process, which would cause a change that might not be reflected in the previous monthly numbers.



DIVISION OF FAMILY RESOURCES

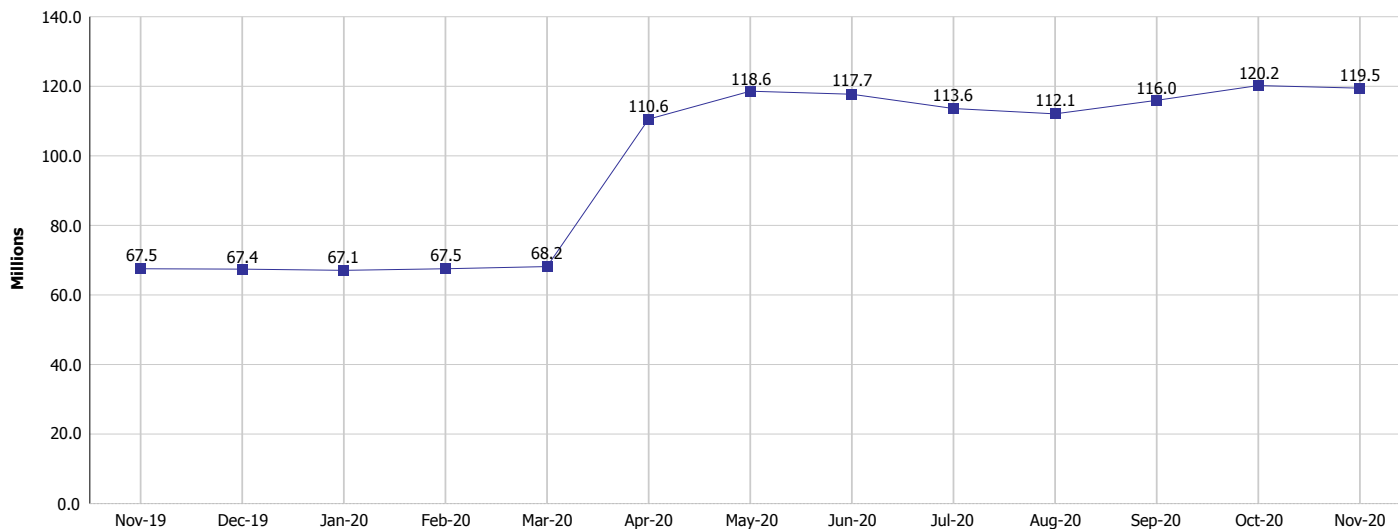
Monthly Management Report

Reporting Month: November 2020

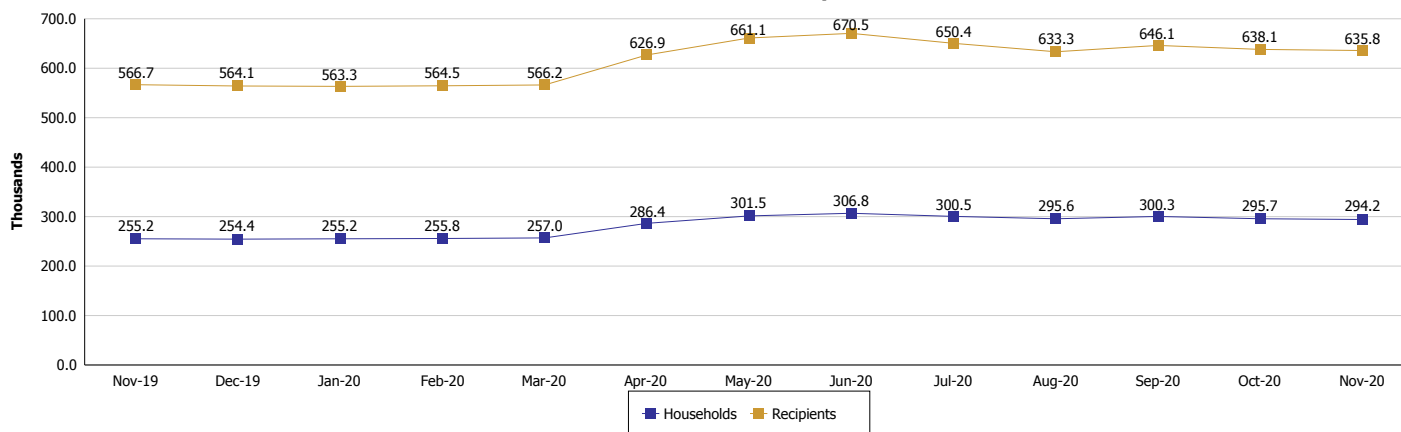
Location: Statewide

SUPPLEMENTAL NUTRITION ASSISTANCE PROGRAM (SNAP)

SNAP Issuance



SNAP Households and Recipients



Note:

All data July 2014 and following will be broken out according to the new DFR region structure effective July 1 2014.



DIVISION OF FAMILY RESOURCES

Monthly Management Report

Reporting Month: November 2020

Location: Statewide

HIP 2.0 and SNAP

	November 2020	October 2020	November 2019	Annual Change
Total HIP 2.0 Members	600,736	583,117	432,536	38.89%
HIP Members also SNAP Recipients	183,150	180,163	139,352	31.43%
Percentage HIP Members SNAP Recipients	30.5%	30.9%	32.2%	-1.73
HIP Members SNAP ABAWDs	0	0	3,407	-100.00%
Percentage HIP Members SNAP ABAWDs	0	0	0.8%	-0.8

Note:

All data July 2014 and following will be broken out according to the new DFR region structure effective July 1 2014.



DIVISION OF FAMILY RESOURCES

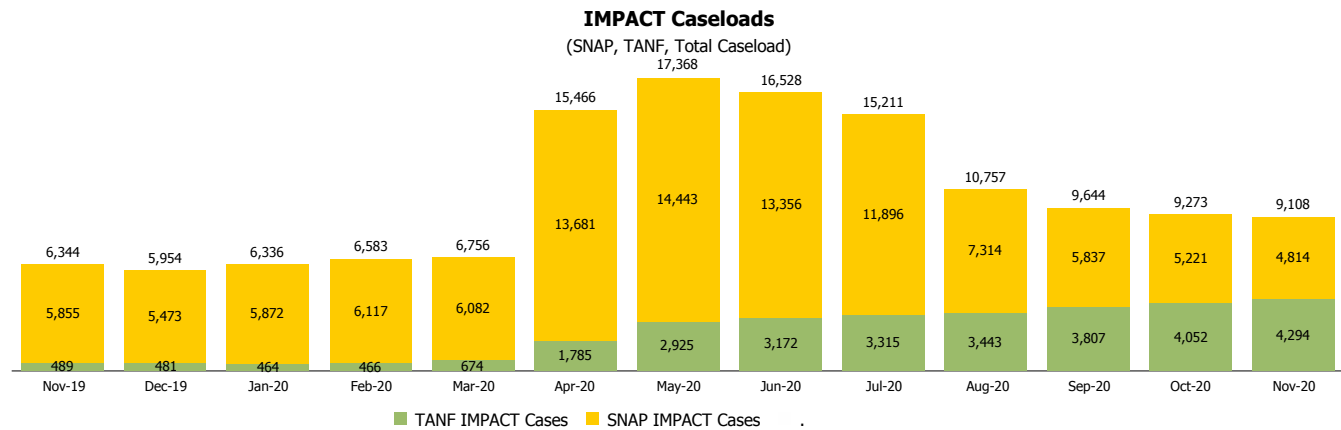
Monthly Management Report

Reporting Month: November 2020

Location: Statewide

INDIANA MANPOWER PLACEMENT AND COMPREHENSIVE TRAINING (IMPACT)

	November 2020	October 2020	November 2019	Annual Change
Number of IMPACT cases	9,108	9,273	6,344	43.57%
Number of TANF IMPACT adults	4,294	4,052	489	778.12%
Number of SNAP IMPACT Cases	4,814	5,221	5,855	-17.78%
Total number of adults employed	551	734	901	-38.85%
Number of TANF IMPACT adults newly employed (within past 30 days)	153	173	79	93.67%
Number of SNAP IMPACT adults employed	398	561	822	-51.58%
Total number of adults ineligible due to employment	2,397	2,925	4,550	-47.32%
Number of TANF adults ineligible due to employment	48	26	15	220.00%
Number of SNAP adults ineligible due to employment	2,349	2,899	4,535	-48.20%



Note:

All data July 2014 and following will be broken out according to the new DFR region structure effective July 1 2014.