



DIVISION OF FAMILY RESOURCES

Monthly Management Report November 2019

State of Indiana

Eric Holcomb
Governor

Family and Social Services Administration

Jennifer Walthall, M.D.
Secretary

Division of Family Resources

Adrienne Shields
Director

For questions regarding data on this report contact:
office.Communications@fssa.IN.gov



State of Indiana

Published December 2019



DIVISION OF FAMILY RESOURCES

Monthly Management Report

Reporting Month: November 2019

Location: Statewide

TEMPORARY ASSISTANCE FOR NEEDY FAMILIES (TANF)

Child-Only and One-Parent Families	Nov 30, 2019	October 2019	November 2018	Annual Change
Number of families receiving TANF Grants	5,231	5,255	5,853	-10.63%
Total number of grant recipients	10,913	11,006	12,235	-10.81%
Number of adult grant recipients	1,493	1,534	1,717	-13.05%
Number of child grant recipients	9,420	9,472	10,518	-10.44%
Total payments	\$1,032,949	\$1,033,389	\$1,131,430	-8.70%
Average payment per case	\$197.47	\$196.65	\$193.31	2.15%
Average payment per recipient	\$94.65	\$93.89	\$92.47	2.36%
Number of cases with benefits reduced to zero	78	1,362	71	9.86%
Number of recipients with benefits reduced to zero	164	1,076	152	7.89%
Number of adult recipients with benefit reduced to zero	36	37	36	0.00%
Number of child recipients with benefit reduced to zero	128	1,039	116	10.34%

Two-Parent Families	Nov 30, 2019	October 2019	November 2018	Annual Change
Number of families receiving TANF Grants	217	231	228	-4.82%
Total number of grant recipients	803	868	885	-9.27%
Number of adult grant recipients	284	310	307	-7.49%
Number of child grant recipients	519	558	578	-10.21%
Total payments	\$51,088	\$54,955	\$48,752	4.79%
Average payment per case	\$235.43	\$237.90	\$213.82	10.10%
Average payment per recipient	\$63.62	\$63.31	\$55.09	15.49%
Number of cases with benefits reduced to zero	6	53	4	50.00%
Number of recipients with benefits reduced to zero	25	53	18	38.89%
Number of adult recipients with benefit reduced to zero	10	10	6	66.67%
Number of child recipients with benefit reduced to zero	15	43	12	25.00%

Note:

All data July 2014 and following will be broken out according to the new DFR region structure effective July 1 2014.

Source:



DIVISION OF FAMILY RESOURCES

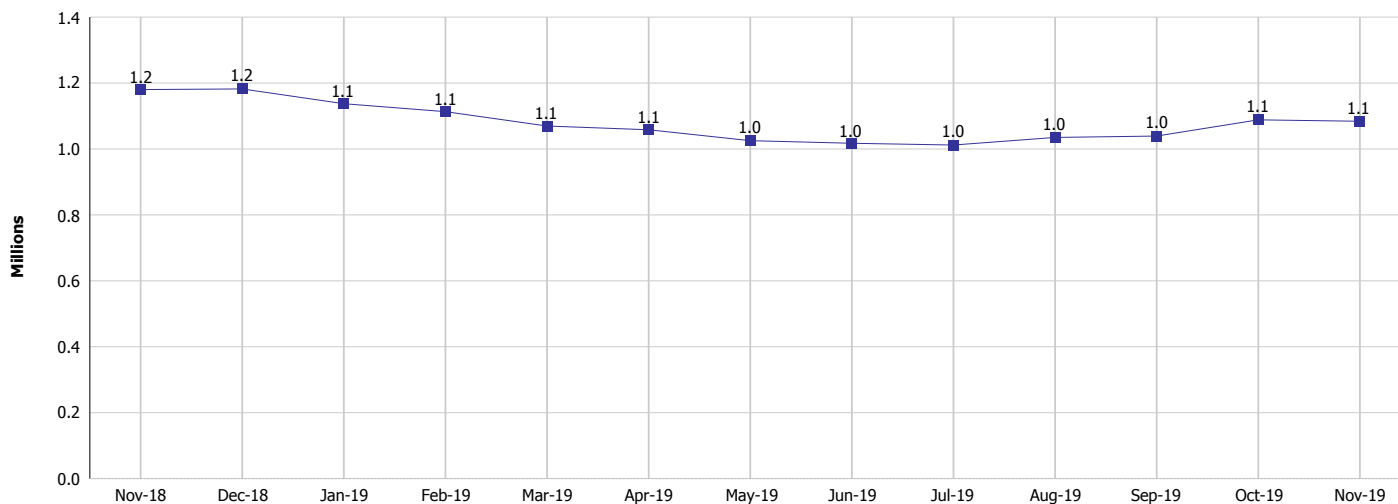
Monthly Management Report

Reporting Month: November 2019

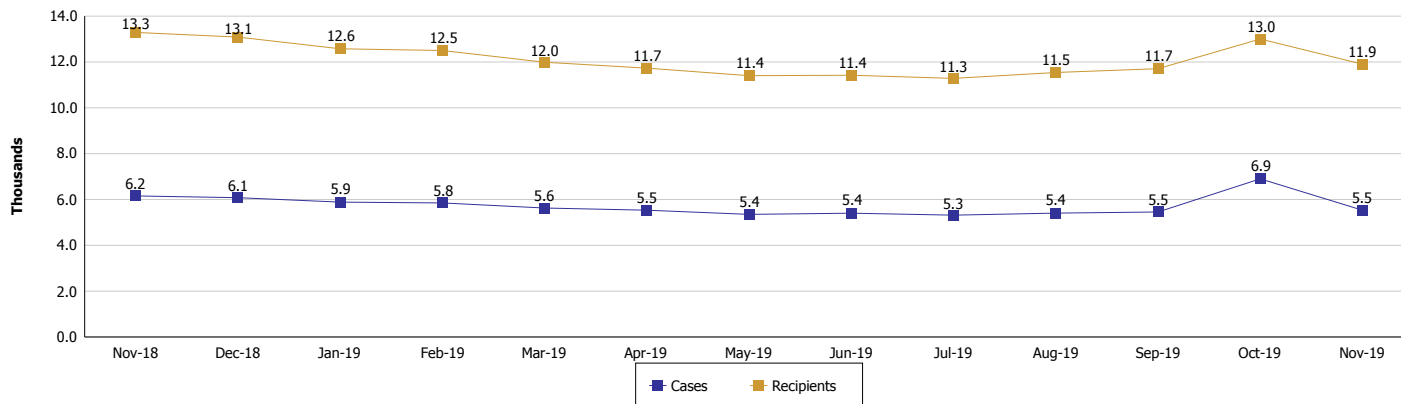
Location: Statewide

TEMPORARY ASSISTANCE FOR NEEDY FAMILIES (TANF)

TANF Cash Assistance
(TANF Regular and TANF Two-Parent)



TANF Cases and Recipients
(TANF Regular and TANF Two-Parent)



Note:

All data July 2014 and following will be broken out according to the new DFR region structure effective July 1 2014.



DIVISION OF FAMILY RESOURCES

Monthly Management Report

Reporting Month: November 2019

Location: Statewide

SUPPLEMENTAL NUTRITION ASSISTANCE PROGRAM (SNAP)

	November 2019	October 2019	November 2018	Annual Change
Total issuance	\$68,947,729	\$74,630,401	\$69,729,472	-1.12%
Number of households receiving SNAP benefits	257,844	282,779	265,003	-2.70%
Number of recipients	573,278	620,243	590,828	-2.97%
Average issuance per household	\$267.40	\$263.92	\$263.13	1.62%
Average issuance per recipient	\$120.27	\$120.32	\$118.02	1.91%

Note:

All data July 2014 and following will be broken out according to the new DFR region structure effective July 1 2014.

SNAP ERROR RATES

	July 2019	June 2019	May 2019	Cumulative FFY 2018
FFY Cumulative Positive Error Rate	7.88%	8.41%	9.05%	6.10%
Monthly Positive Error Rate	3.56%	3.70%	11.54%	NA
FFY Cumulative Negative Error Rate	40.63%	40.86%	40.56%	39.94%
Monthly Negative Error Rate	38.60%	43.40%	35.59%	NA

Note:

All data July 2014 and following will be broken out according to the new DFR region structure effective July 1 2014.

Notes:

Reporting periods for SNAP Error Rates reflect the review period and Federal submission deadline. The month reported above is the month in which an action was taken included in the review sample.

Positive actions are those which produced an issuance of benefits to a household. Negative actions are those which closed or denied benefits to a household.

Error Rate data is reported by the state before the federal agency has accepted and finalized the results. This rate is subject to revision based upon: completion and submission of outstanding reviews; final review corrections; and completion of previously dropped reviews. Monthly numbers are taken from end-of-month totals. The error status of cases may be changed by the State or Federal Review process, which would cause a change that might not be reflected in the previous monthly numbers.



DIVISION OF FAMILY RESOURCES

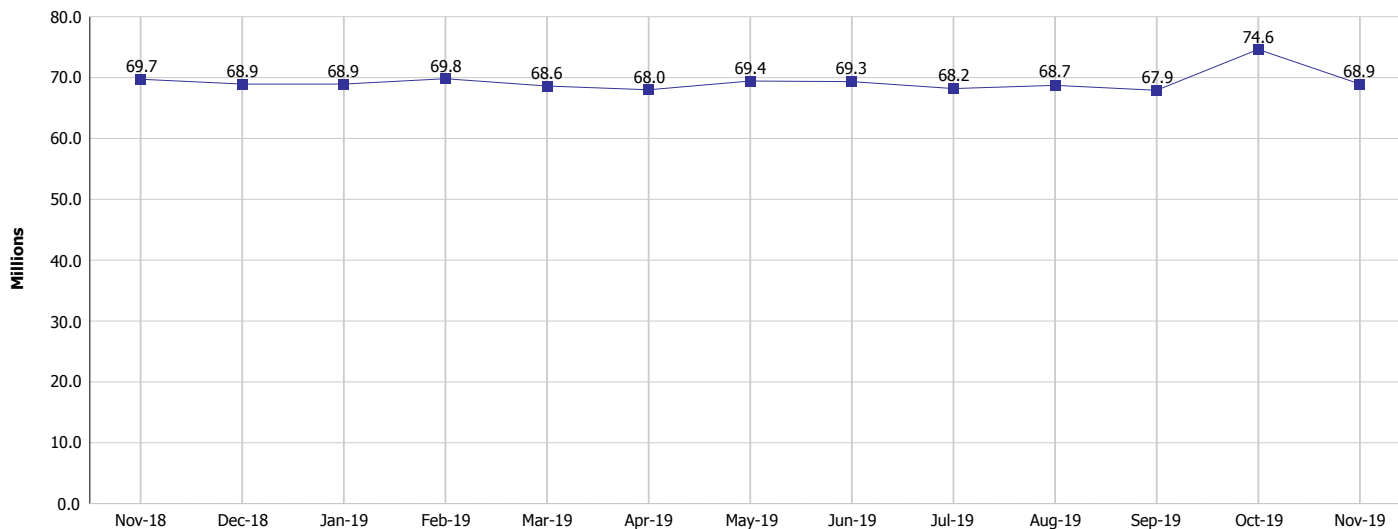
Monthly Management Report

Reporting Month: November 2019

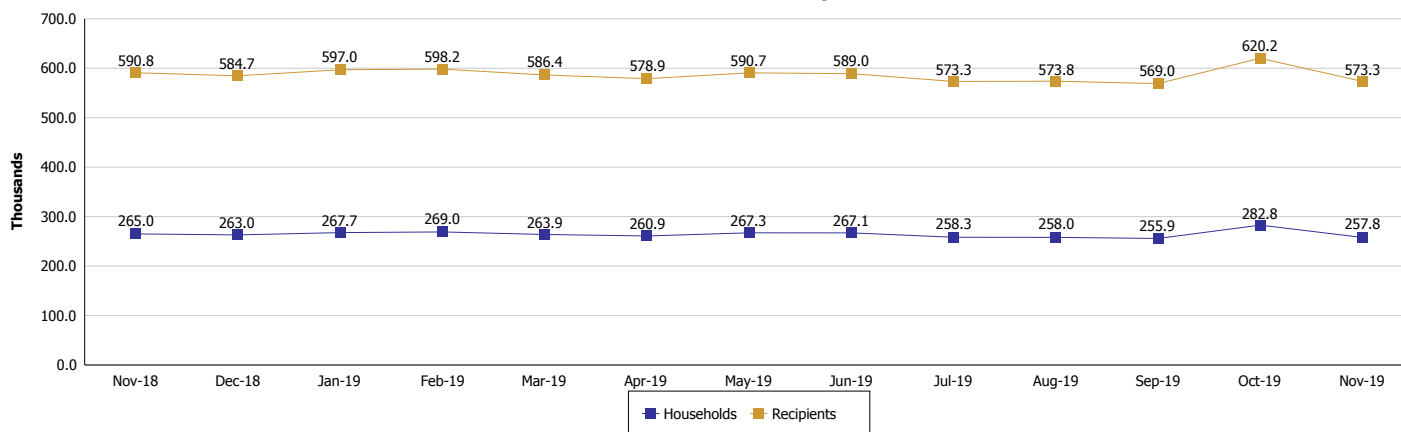
Location: Statewide

SUPPLEMENTAL NUTRITION ASSISTANCE PROGRAM (SNAP)

SNAP Issuance



SNAP Households and Recipients



Note:

All data July 2014 and following will be broken out according to the new DFR region structure effective July 1 2014.



DIVISION OF FAMILY RESOURCES

Monthly Management Report

Reporting Month: November 2019

Location: Statewide

HIP 2.0 and SNAP

	November 2019	October 2019	November 2018	Annual Change
Total HIP 2.0 Members	432,536	433,099	424,599	1.87%
HIP Members also SNAP Recipients	139,352	141,036	142,591	-2.27%
Percentage HIP Members SNAP Recipients	32.2%	32.6%	33.6%	0.52%
HIP Members SNAP ABAWDs	3,407	3,745	5,136	-33.66%
Percentage HIP Members SNAP ABAWDs	0.8%	0.9%	1.2%	0.52%

Note:

All data July 2014 and following will be broken out according to the new DFR region structure effective July 1 2014.



DIVISION OF FAMILY RESOURCES

Monthly Management Report

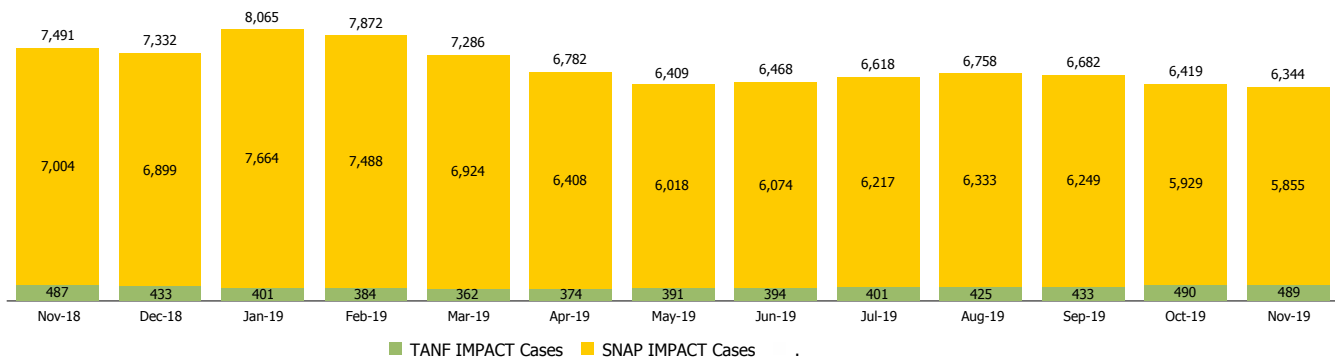
Reporting Month: November 2019

Location: Statewide

INDIANA MANPOWER PLACEMENT AND COMPREHENSIVE TRAINING (IMPACT)

	November 2019	October 2019	November 2018	Annual Change
Number of IMPACT cases	6,344	6,419	7,491	-15.31%
Number of TANF IMPACT adults	489	490	487	0.41%
Number of SNAP IMPACT Cases	5,855	5,929	7,004	-16.40%
Total number of adults employed	901	1,152	1,177	-23.45%
Number of TANF IMPACT adults newly employed (within past 30 days)	79	93	90	-12.22%
Number of SNAP IMPACT adults employed	822	1,059	1,087	-24.38%
Total number of adults ineligible due to employment	4,550	4,892	6,299	-27.77%
Number of TANF adults ineligible due to employment	15	22	26	-42.31%
Number of SNAP adults ineligible due to employment	4,535	4,870	6,273	-27.71%

IMPACT Caseloads
(SNAP, TANF, Total Caseload)



Note:

All data July 2014 and following will be broken out according to the new DFR region structure effective July 1 2014.