



## DIVISION OF FAMILY RESOURCES

# Monthly Management Report August 2019

### State of Indiana

Eric Holcomb  
Governor

### Family and Social Services Administration

Jennifer Walthall, M.D.  
Secretary

### Division of Family Resources

Adrienne Shields  
Director

For questions regarding data on this report contact:  
[office.Communications@fssa.IN.gov](mailto:office.Communications@fssa.IN.gov)



## State of Indiana

Published September 2019



## DIVISION OF FAMILY RESOURCES

### Monthly Management Report

Reporting Month: August 2019

Location: Statewide

#### TEMPORARY ASSISTANCE FOR NEEDY FAMILIES (TANF)

Child-Only and One-Parent Families	Aug 31, 2019	July 2019	August 2018	Annual Change
Number of families receiving TANF Grants	5,111	5,024	5,879	-13.06%
Total number of grant recipients	10,556	10,308	12,318	-14.30%
Number of adult grant recipients	1,450	1,404	1,707	-15.06%
Number of child grant recipients	9,106	8,904	10,611	-14.18%
Total payments	\$983,016	\$961,770	\$1,147,398	-14.33%
Average payment per case	\$192.33	\$191.44	\$195.17	-1.45%
Average payment per recipient	\$93.12	\$93.30	\$93.15	-0.03%
Number of cases with benefits reduced to zero	66	68	83	-20.48%
Number of recipients with benefits reduced to zero	139	142	179	-22.35%
Number of adult recipients with benefit reduced to zero	30	34	44	-31.82%
Number of child recipients with benefit reduced to zero	109	108	135	-19.26%

Two-Parent Families	Aug 31, 2019	July 2019	August 2018	Annual Change
Number of families receiving TANF Grants	223	219	230	-3.04%
Total number of grant recipients	821	806	891	-7.86%
Number of adult grant recipients	294	295	310	-5.16%
Number of child grant recipients	527	511	581	-9.29%
Total payments	\$51,960	\$50,222	\$48,370	7.42%
Average payment per case	\$233.00	\$229.32	\$210.30	10.79%
Average payment per recipient	\$63.29	\$62.31	\$54.29	16.58%
Number of cases with benefits reduced to zero	5	6	5	0.00%
Number of recipients with benefits reduced to zero	26	29	18	44.44%
Number of adult recipients with benefit reduced to zero	9	10	7	28.57%
Number of child recipients with benefit reduced to zero	17	19	11	54.55%

**Note:**

All data July 2014 and following will be broken out according to the new DFR region structure effective July 1 2014.

Source:



## DIVISION OF FAMILY RESOURCES

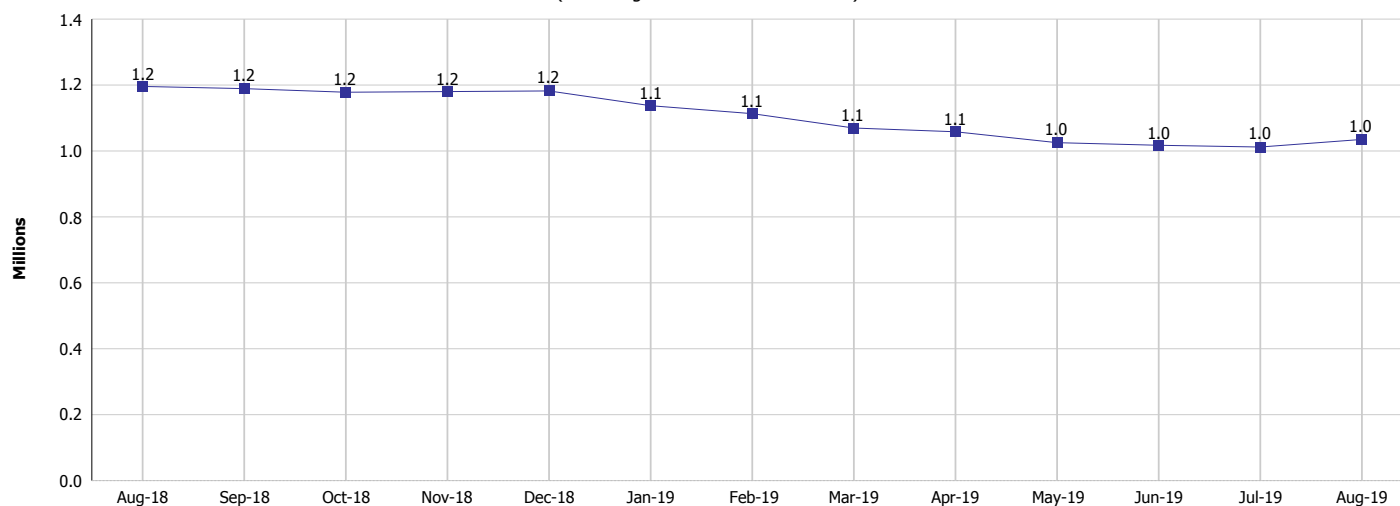
### Monthly Management Report

Reporting Month: August 2019

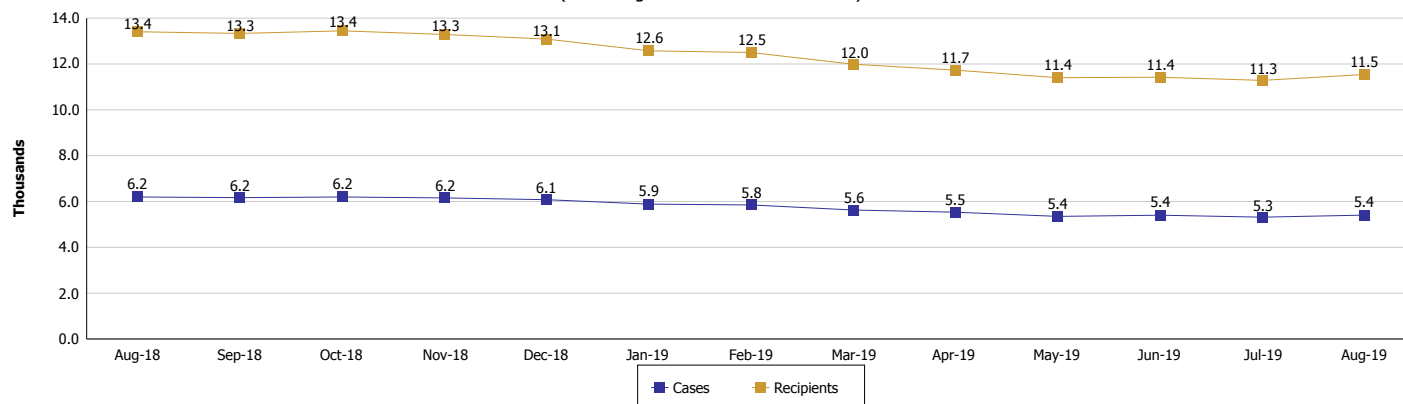
Location: Statewide

#### TEMPORARY ASSISTANCE FOR NEEDY FAMILIES (TANF)

**TANF Cash Assistance**  
(TANF Regular and TANF Two-Parent)



**TANF Cases and Recipients**  
(TANF Regular and TANF Two-Parent)



**Note:**

All data July 2014 and following will be broken out according to the new DFR region structure effective July 1 2014.



## DIVISION OF FAMILY RESOURCES

### Monthly Management Report

Reporting Month: August 2019

Location: Statewide

#### SUPPLEMENTAL NUTRITION ASSISTANCE PROGRAM (SNAP)

	August 2019	July 2019	August 2018	Annual Change
Total issuance	\$68,728,164	\$68,195,853	\$72,153,331	-4.75%
Number of households receiving SNAP benefits	258,050	258,339	271,644	-5.00%
Number of recipients	573,808	573,295	606,194	-5.34%
Average issuance per household	\$266.34	\$263.98	\$265.62	0.27%
Average issuance per recipient	\$119.78	\$118.95	\$119.03	0.63%

**Note:**

All data July 2014 and following will be broken out according to the new DFR region structure effective July 1 2014.

#### SNAP ERROR RATES

	April 2019	March 2019	February 2019	Cumulative FFY 2018
FFY Cumulative Positive Error Rate	8.66%	9.12%	9.36%	6.10%
Monthly Positive Error Rate	6.78%	8.20%	3.96%	NA
FFY Cumulative Negative Error Rate	41.29%	41.50%	40.61%	39.94%
Monthly Negative Error Rate	40.00%	46.30%	54.17%	NA

**Note:**

All data July 2014 and following will be broken out according to the new DFR region structure effective July 1 2014.

**Notes:**

Reporting periods for SNAP Error Rates reflect the review period and Federal submission deadline. The month reported above is the month in which an action was taken included in the review sample.

Positive actions are those which produced an issuance of benefits to a household. Negative actions are those which closed or denied benefits to a household.

Error Rate data is reported by the state before the federal agency has accepted and finalized the results. This rate is subject to revision based upon: completion and submission of outstanding reviews; final review corrections; and completion of previously dropped reviews. Monthly numbers are taken from end-of-month totals. The error status of cases may be changed by the State or Federal Review process, which would cause a change that might not be reflected in the previous monthly numbers.



# DIVISION OF FAMILY RESOURCES

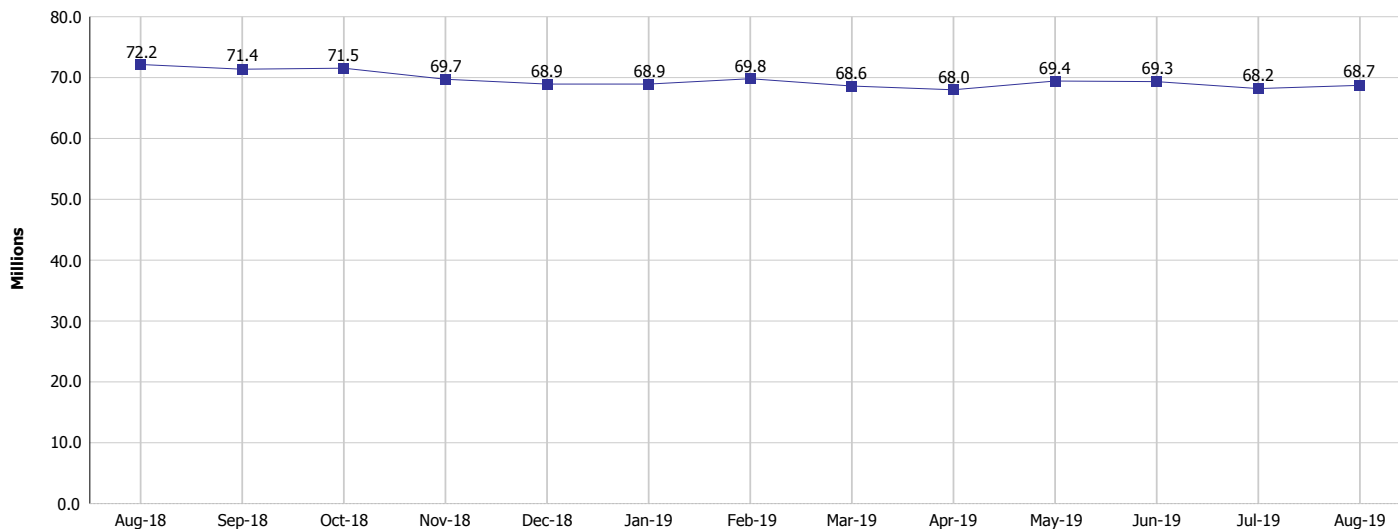
## Monthly Management Report

Reporting Month: August 2019

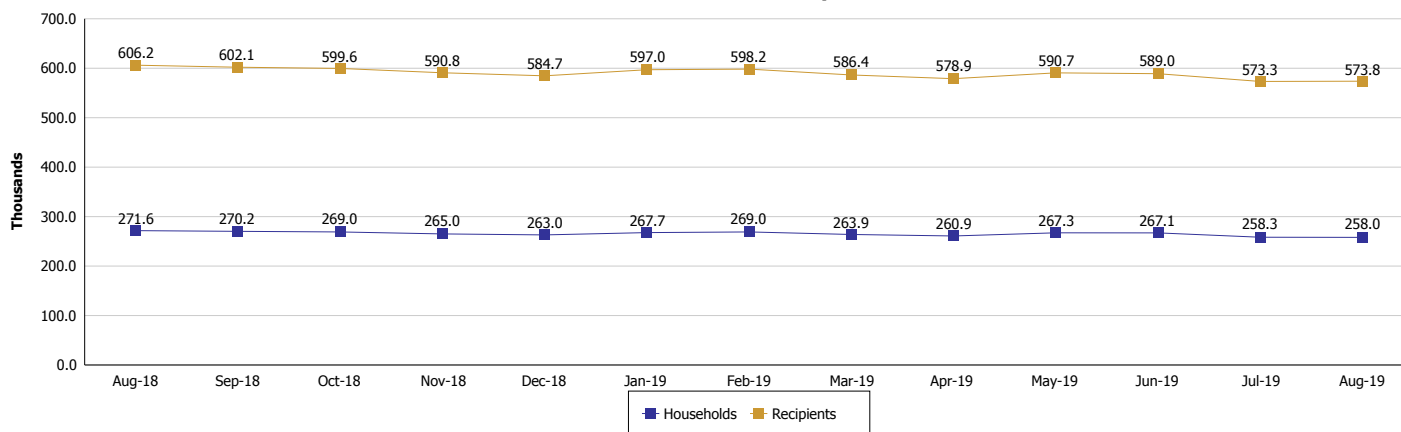
Location: Statewide

### SUPPLEMENTAL NUTRITION ASSISTANCE PROGRAM (SNAP)

#### SNAP Issuance



#### SNAP Households and Recipients



#### Note:

All data July 2014 and following will be broken out according to the new DFR region structure effective July 1 2014.



## DIVISION OF FAMILY RESOURCES

### Monthly Management Report

Reporting Month: August 2019

Location: Statewide

#### HIP 2.0 and SNAP

	August 2019	July 2019	August 2018	Annual Change
Total HIP 2.0 Members	426,975	426,318	422,915	0.96%
HIP Members also SNAP Recipients	140,035	138,892	144,462	-3.06%
Percentage HIP Members SNAP Recipients	32.8%	32.6%	34.2%	-0.56%
HIP Members SNAP ABAWDs	3,890	3,869	6,754	-42.40%
Percentage HIP Members SNAP ABAWDs	0.9%	0.9%	1.6%	-0.56%

**Note:**

All data July 2014 and following will be broken out according to the new DFR region structure effective July 1 2014.



## DIVISION OF FAMILY RESOURCES

### Monthly Management Report

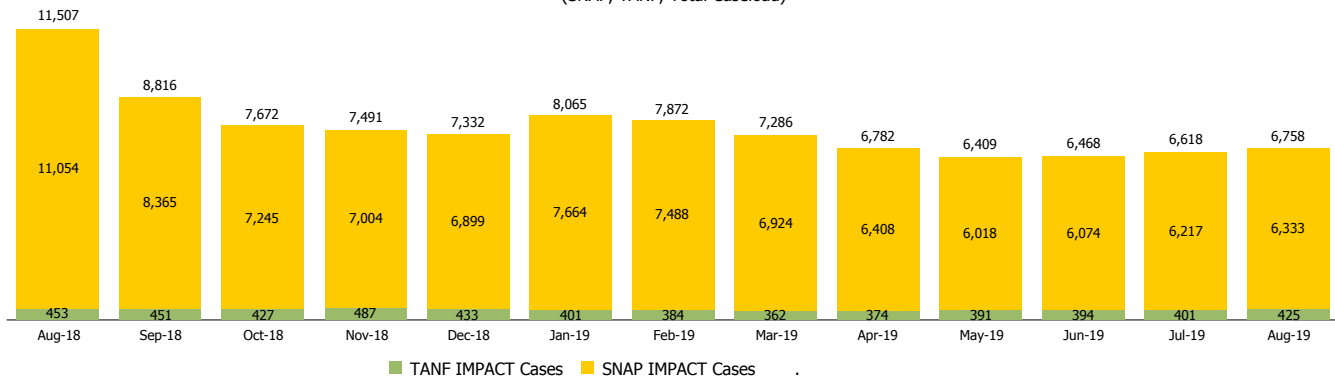
Reporting Month: August 2019

Location: Statewide

#### INDIANA MANPOWER PLACEMENT AND COMPREHENSIVE TRAINING (IMPACT)

	August 2019	July 2019	August 2018	Annual Change
Number of IMPACT cases	6,758	6,618	11,507	-41.27%
Number of TANF IMPACT adults	425	401	453	-6.18%
Number of SNAP IMPACT Cases	6,333	6,217	11,054	-42.71%
Total number of adults employed	1,145	1,047	1,747	-34.46%
Number of TANF IMPACT adults newly employed (within past 30 days)	97	83	123	-21.14%
Number of SNAP IMPACT adults employed	1,048	964	1,624	-35.47%
Total number of adults ineligible due to employment	4,463	4,364	3,956	12.82%
Number of TANF adults ineligible due to employment	17	16	14	21.43%
Number of SNAP adults ineligible due to employment	4,446	4,348	3,942	12.79%

**IMPACT Caseloads**  
(SNAP, TANF, Total Caseload)



**Note:**

All data July 2014 and following will be broken out according to the new DFR region structure effective July 1 2014.