



DIVISION OF FAMILY RESOURCES

Monthly Management Report April 2021

State of Indiana

Eric Holcomb
Governor

Family and Social Services Administration

Jennifer Sullivan, M.D.
Secretary

Division of Family Resources

Adrienne Shields
Director

For questions regarding data on this report contact:
office.Communications@fssa.IN.gov



State of Indiana

Published May 2021



DIVISION OF FAMILY RESOURCES

Monthly Management Report

Reporting Month: April 2021

Location: Statewide

TEMPORARY ASSISTANCE FOR NEEDY FAMILIES (TANF)

Child-Only and One-Parent Families	Apr 30, 2021	March 2021	April 2020	Annual Change
Number of families receiving TANF Grants	7,019	7,650	5,965	17.67%
Total number of grant recipients	15,654	17,420	12,932	21.05%
Number of adult grant recipients	3,233	3,718	2,271	42.36%
Number of child grant recipients	12,421	13,702	10,661	16.51%
Total payments	\$1,470,787	\$1,611,802	\$1,216,141	20.94%
Average payment per case	\$209.54	\$210.69	\$203.88	2.78%
Average payment per recipient	\$93.96	\$92.53	\$94.04	-0.09%
Number of cases with benefits reduced to zero	482	446	69	598.55%
Number of recipients with benefits reduced to zero	1,246	1,106	144	765.28%
Number of adult recipients with benefit reduced to zero	355	311	36	886.11%
Number of child recipients with benefit reduced to zero	891	795	108	725.00%

Two-Parent Families	Apr 30, 2021	March 2021	April 2020	Annual Change
Number of families receiving TANF Grants	703	771	344	104.36%
Total number of grant recipients	2,311	2,565	1,269	82.11%
Number of adult grant recipients	718	813	471	52.44%
Number of child grant recipients	1,593	1,752	798	99.62%
Total payments	\$185,338	\$206,963	\$94,509	96.11%
Average payment per case	\$263.64	\$268.43	\$274.74	-4.04%
Average payment per recipient	\$80.20	\$80.69	\$74.48	7.68%
Number of cases with benefits reduced to zero	55	51	8	587.50%
Number of recipients with benefits reduced to zero	229	214	33	593.94%
Number of adult recipients with benefit reduced to zero	74	74	12	516.67%
Number of child recipients with benefit reduced to zero	155	140	21	638.10%

Note:

All data July 2014 and following will be broken out according to the new DFR region structure effective July 1 2014.

Source:



DIVISION OF FAMILY RESOURCES

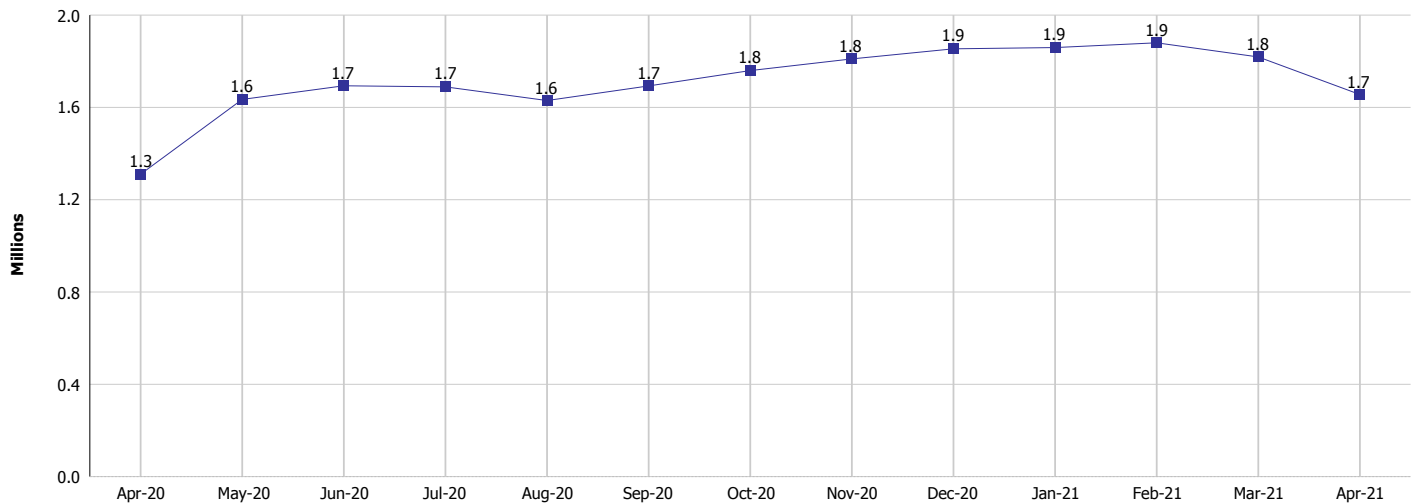
Monthly Management Report

Reporting Month: April 2021

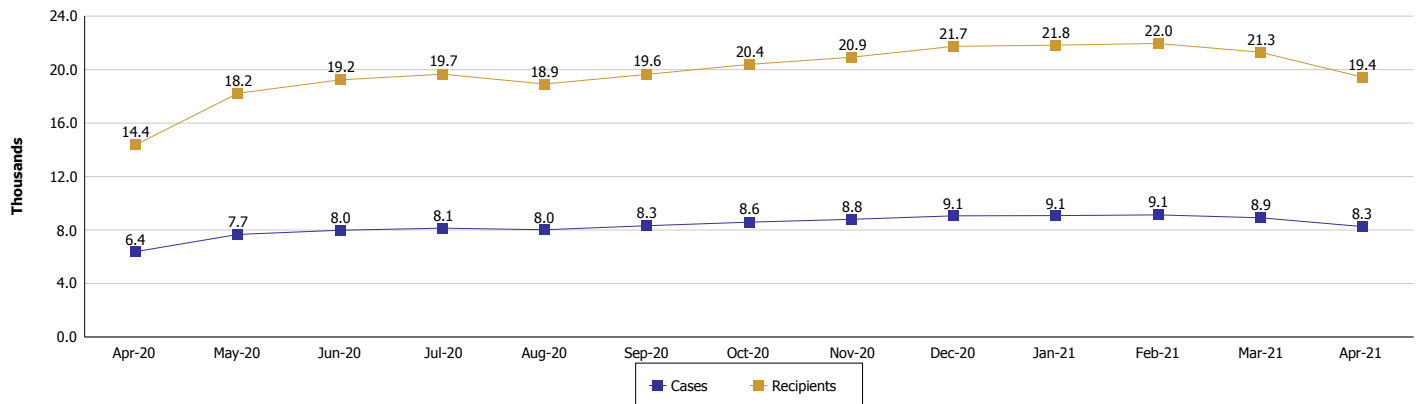
Location: Statewide

TEMPORARY ASSISTANCE FOR NEEDY FAMILIES (TANF)

TANF Cash Assistance
(TANF Regular and TANF Two-Parent)



TANF Cases and Recipients
(TANF Regular and TANF Two-Parent)



Note:

All data July 2014 and following will be broken out according to the new DFR region structure effective July 1 2014.



DIVISION OF FAMILY RESOURCES

Monthly Management Report

Reporting Month: April 2021 Location: Statewide

SUPPLEMENTAL NUTRITION ASSISTANCE PROGRAM (SNAP)

	April 2021	March 2021	April 2020	Annual Change
Total issuance	\$145,723,961	\$140,013,305	\$110,554,851	31.81%
Number of households receiving SNAP benefits	301,214	306,255	286,420	5.17%
Number of recipients	645,344	657,861	626,860	2.95%
Average issuance per household	\$483.79	\$457.18	\$385.99	25.34%
Average issuance per recipient	\$225.81	\$212.83	\$176.36	28.04%

Note:
All data July 2014 and following will be broken out according to the new DFR region structure effective July 1 2014.

SNAP ERROR RATES

	Cumulative FFY
FFY Cumulative Positive Error Rate	
Monthly Positive Error Rate	NA
FFY Cumulative Negative Error Rate	
Monthly Negative Error Rate	NA

Note:
All data July 2014 and following will be broken out according to the new DFR region structure effective July 1 2014.

Notes:
Reporting periods for SNAP Error Rates reflect the review period and Federal submission deadline. The month reported above is the month in which an action was taken included in the review sample.
Positive actions are those which produced an issuance of benefits to a household. Negative actions are those which closed or denied benefits to a household.
Error Rate data is reported by the state before the federal agency has accepted and finalized the results. This rate is subject to revision based upon: completion and submission of outstanding reviews; final review corrections; and completion of previously dropped reviews. Monthly numbers are taken from end-of-month totals. The error status of cases may be changed by the State or Federal Review process, which would cause a change that might not be reflected in the previous monthly numbers.



DIVISION OF FAMILY RESOURCES

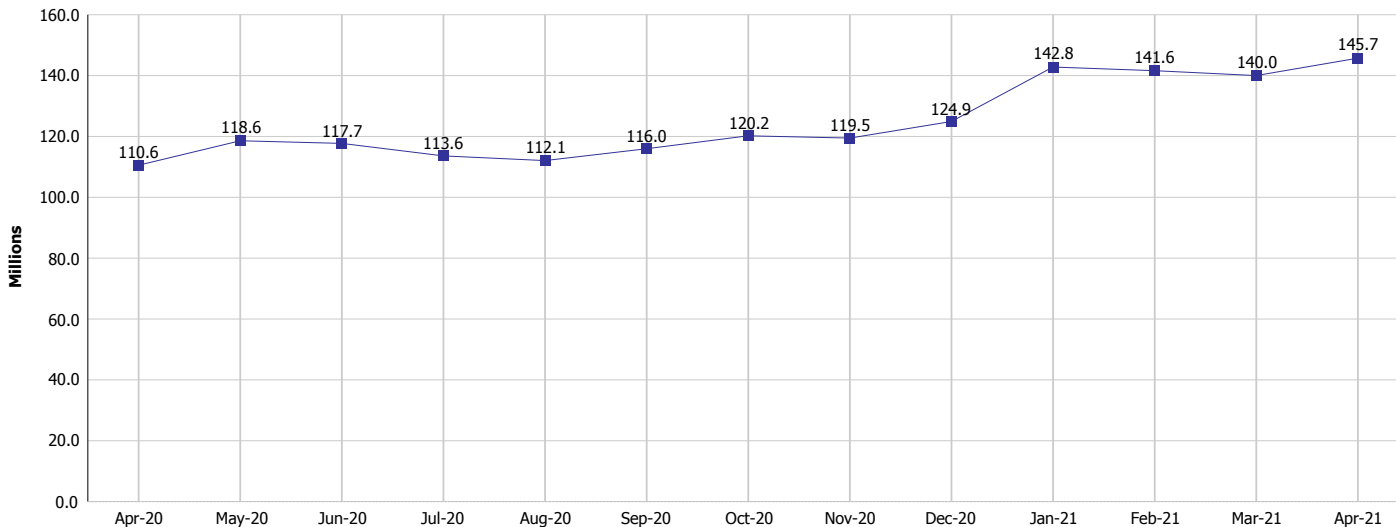
Monthly Management Report

Reporting Month: April 2021

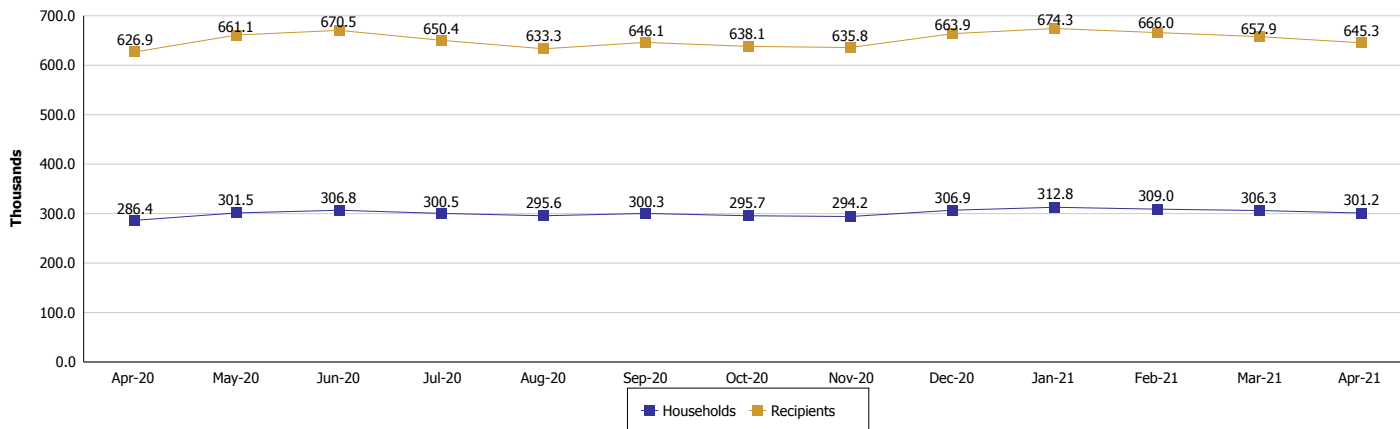
Location: Statewide

SUPPLEMENTAL NUTRITION ASSISTANCE PROGRAM (SNAP)

SNAP Issuance



SNAP Households and Recipients



Note:

All data July 2014 and following will be broken out according to the new DFR region structure effective July 1 2021.



DIVISION OF FAMILY RESOURCES

Monthly Management Report

Reporting Month: April 2021

Location: Statewide

HIP 2.0 and SNAP

	April 2021	March 2021	April 2020	Annual Change
Total HIP 2.0 Members	671,225	660,898	467,619	43.54%
HIP Members also SNAP Recipients	191,428	196,018	165,043	15.99%
Percentage HIP Members SNAP Recipients	28.5%	29.7%	35.3%	-6.78
HIP Members SNAP ABAWDs	0	0	6,357	-100.00%
Percentage HIP Members SNAP ABAWDs	0	0	1.4%	-1.4

Note:

All data July 2014 and following will be broken out according to the new DFR region structure effective July 1 2014.



DIVISION OF FAMILY RESOURCES

Monthly Management Report

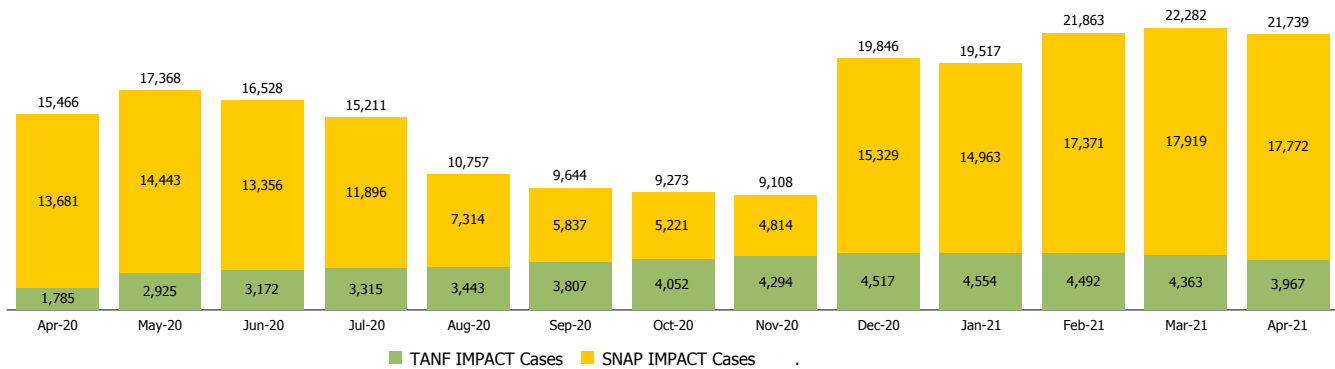
Reporting Month: April 2021

Location: Statewide

INDIANA MANPOWER PLACEMENT AND COMPREHENSIVE TRAINING (IMPACT)

	April 2021	March 2021	April 2020	Annual Change
Number of IMPACT cases	21,739	22,282	15,466	40.56%
Number of TANF IMPACT adults	3,967	4,363	1,785	122.24%
Number of SNAP IMPACT Cases	17,772	17,919	13,681	29.90%
Total number of adults employed	1,820	1,991	1,245	46.18%
Number of TANF IMPACT adults newly employed (within past 30 days)	151	175	98	54.08%
Number of SNAP IMPACT adults employed	1,669	1,816	1,147	45.51%
Total number of adults ineligible due to employment	3,087	2,553	2,831	9.04%
Number of TANF adults ineligible due to employment	41	44	9	355.56%
Number of SNAP adults ineligible due to employment	3,046	2,509	2,822	7.94%

IMPACT Caseloads
(SNAP, TANF, Total Caseload)



Note:

All data July 2014 and following will be broken out according to the new DFR region structure effective July 1 2014.