

BEDROCK AQUIFER SYSTEMS OF RIPLEY COUNTY, INDIANA

In Ripley County, rock types exposed at the bedrock surface are relatively poorly productive limestones and dolomites with varying amounts of interbedded shales to poorly productive shales with limestone interbeds.

Bedrock aquifers are only minor sources of ground water in this county. Bedrock wells are more common in the southern part of the county (south of Versailles) where unconsolidated materials are thin. However, over 30 percent of bedrock wells in this area have extremely poor yields (dry holes or pumped dry when originally tested). Low-production large diameter wells using the unconsolidated materials above the shallow bedrock are also common in this area.

The susceptibility of bedrock aquifer systems to surface contamination is largely dependent on the type and thickness of the overlying sediments. Just as recharge for bedrock aquifers cannot exceed that of overlying unconsolidated deposits, susceptibility to surface contamination will not exceed that of overlying deposits. However, because the bedrock aquifer systems have complex fracturing systems, once a contaminant has been introduced into a bedrock aquifer system, it will be difficult to track and remediate.

Silurian and Devonian Carbonates Aquifer System

This bedrock aquifer system includes primarily Silurian and early Devonian age carbonates in the outcrop/subcrop area in Ripley County. This aquifer system also includes the overlying middle Devonian age Muscatuck Group, where it is present in an extremely small area (about 1 square mile) in the southwestern part of the county. Because units of the Silurian and Devonian system are composed of similar carbonate rock types, and cannot easily be distinguished on the basis of water well records, they are considered as a single water-bearing system. It is composed mostly of limestone and dolomite with some interbedded shale units. The outcrop/subcrop area of the Silurian and Devonian carbonates covers roughly the western half of the county, but these rocks are absent where larger streams have cut down to expose the underlying Maquoketa Group. In this county the thickness of the Silurian and Devonian Carbonates Aquifer System is less than 100 feet.

The depth to the bedrock surface in the Silurian and Devonian Carbonates is generally less than 50 feet. Very few wells are completed in the Silurian and Devonian Carbonates Aquifer System in this county. Although some produce over 5 gallons per minute (gpm), most of these wells are reported to be dry or pumped dry. Most bedrock wells within the outcrop/subcrop area extend into the deeper carbonates of the underlying Maquoketa Group, because the Silurian and Devonian Carbonates Aquifer System lacks sufficient thickness to allow reliable well production for most domestic needs.

This aquifer system is generally not very susceptible to contamination from the land surface, except where karst development is significant or where overlying clay-rich till and residuum is thin or absent.

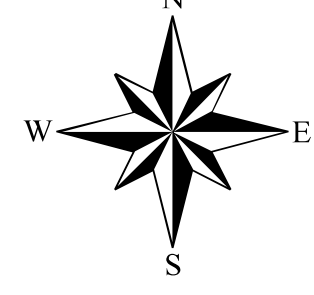
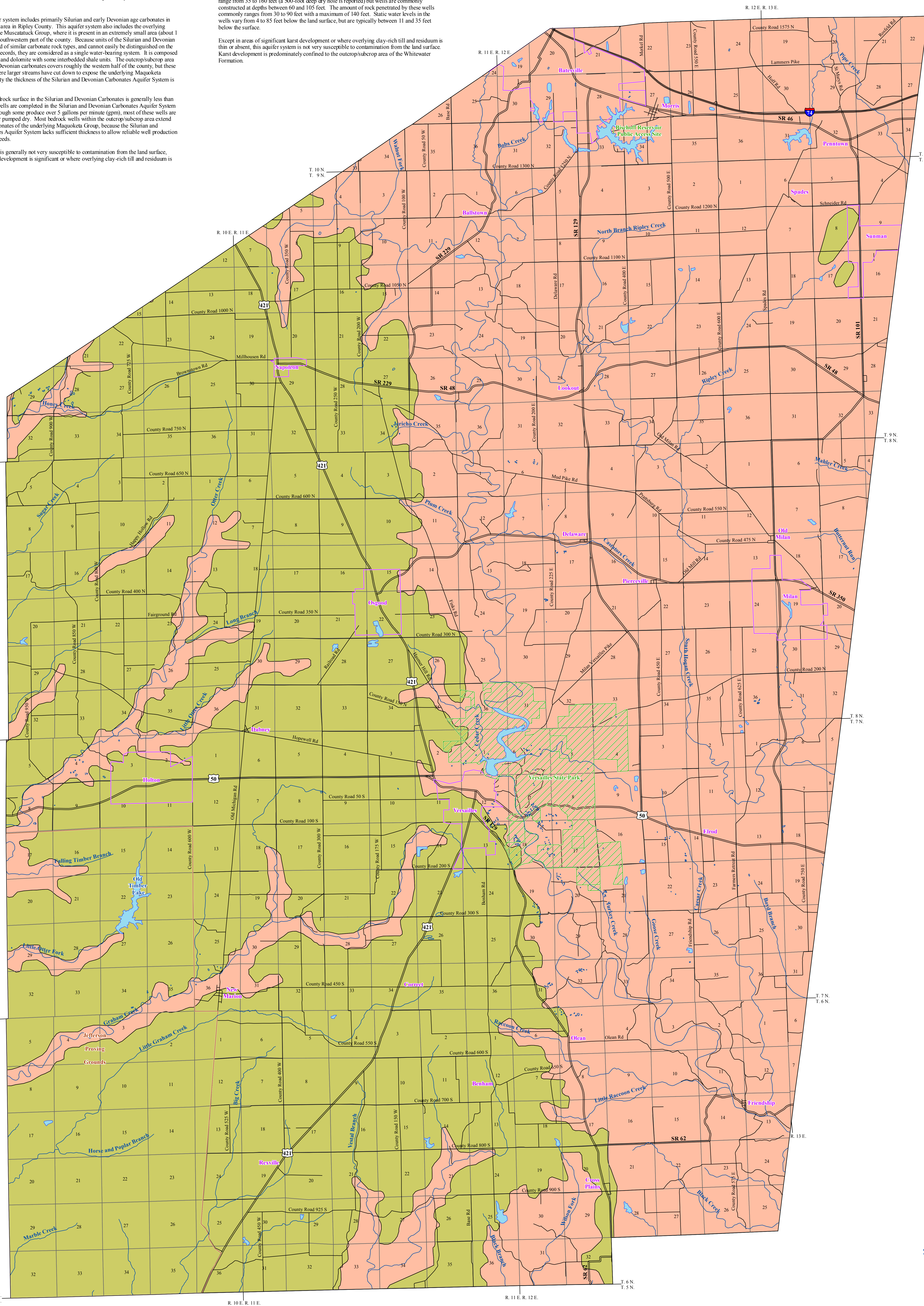
Ordovician-Maquoketa Group Aquifer System

The outcrop/subcrop of the Maquoketa Group in Ripley County covers much of the eastern half of the county and many bedrock valleys in the western part of the county. The Maquoketa Group consists in ascending order of the Kops, Dillsboro, and Whitewater Formations. It unconformably overlies the Trenton Limestone and Lexington Limestone in the northwestern and southeastern parts of the county, respectively. Between these areas, in a band trending southwest to northeast, the Maquoketa Group directly overlies the Black River Group due to the absence of the Trenton and Lexington Limestones. The Maquoketa Group consists mostly of shales with interbedded limestone units. Although this system is approximately 800 to 900 feet thick in the county, few wells have used more than the top 100 feet for water production.

The Maquoketa Group is considered a minor ground-water source in the county. Most wells for homes, irrigation, and stock produce between 1 and 5 gpm. Localized yields may exceed 20 gpm; however, (pumped) dry holes are quite common.

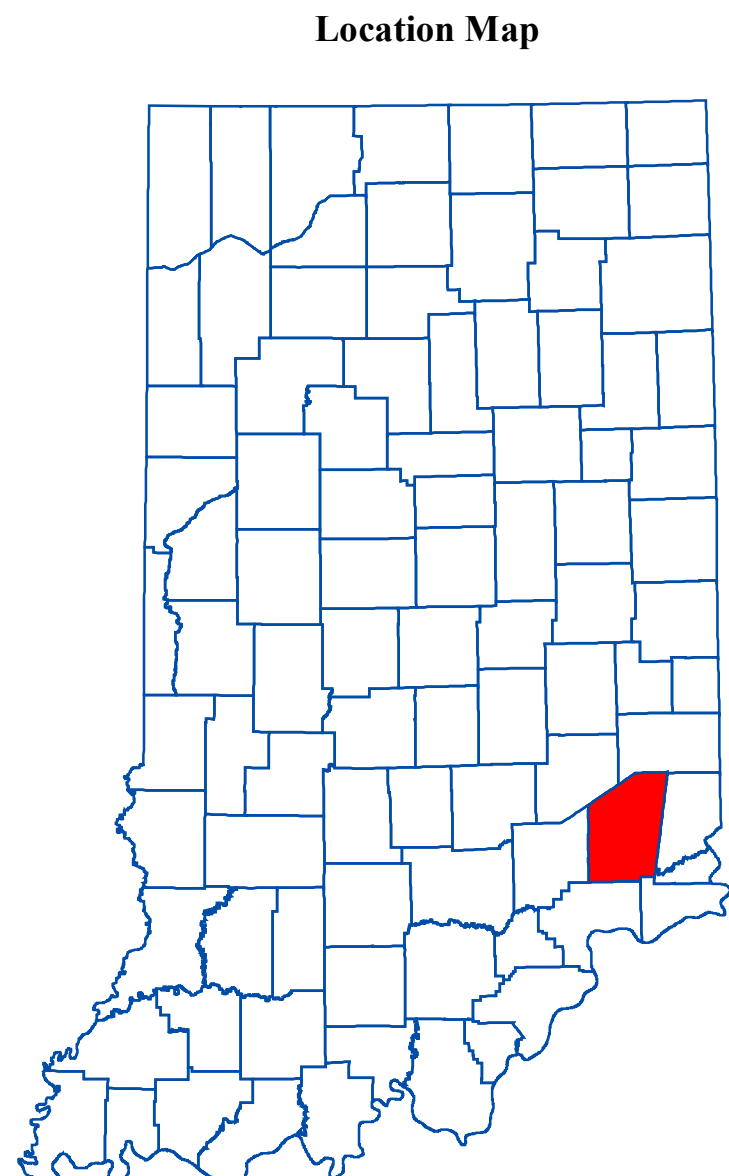
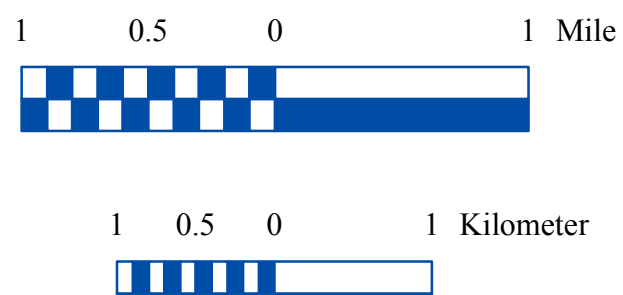
The depth to the bedrock surface is typically 10 to 45 feet. Well depths in the Maquoketa Group range from 35 to 160 feet (a 500-foot deep dry hole is reported) but wells are commonly constructed at depths between 60 and 105 feet. The amount of rock penetrated by these wells commonly ranges from 30 to 60 feet with a maximum of 140 feet. Static water levels in the wells vary from 4 to 85 feet below the land surface, but are typically between 11 and 35 feet below the surface.

Except in areas of significant karst development or where overlying clay-rich till and residuum is thin or absent, this aquifer system is not very susceptible to contamination from the land surface. Karst development is predominantly confined to the outcrop/subcrop area of the Whitewater Formation.



EXPLANATION

- Stream
- County Road
- State Road & US Highway
- Interstate
- Municipal Boundary
- USGS Closed Contours (Mostly Karst Depressions)
- Jefferson Proving Ground
- State Managed Property
- Lake & River



Map Use and Disclaimer Statement

We request that the following agency be acknowledged in products derived from this map: Indiana Department of Natural Resources, Division of Water. This map was compiled by staff of the Indiana Department of Natural Resources, Division of Water using data believed to be reasonably accurate. However, a degree of error is inherent in all maps. This product is distributed "as is" without warranties of any kind, either expressed or implied. This map is intended for use only at the published scale.

This map was created from several existing shapefiles. Township and Range Lines of Indiana (line shapefile, 20020621), Land Survey Lines of Indiana (polygon shapefile, 20020621), and County Boundaries of Indiana (polygon shapefile, 20050621) were all from the Indiana Geological Survey and based on a 1:24,000 scale, except the Bedrock Geology of Southwestern Indiana (polygon shapefile, 20001124), which was at a 1:50,000 scale. System1 and System2 were from the Indiana Department of Transportation (line shapefile, 2003) and based on a 1:24,000 scale. Managed Areas66 (polygon shapefile, various dates) was from DNR. City Areas in Southwestern Indiana (polygon shapefile, 1999) was from ESRI and based on a 1:100,000 scale. Streams27 (line shapefile, 20000420) was from the Center for Advanced Applications in GIS at Purdue University.

Bedrock Aquifer Systems of Ripley County, Indiana

by
Gregory P. Schrader
Division of Water, Resource Assessment Section

March 2004

Map generated by Jennifer M. Millan
Updated by Scott H. Dean, 2011
IDNR, Division of Water, Resource Assessment Section