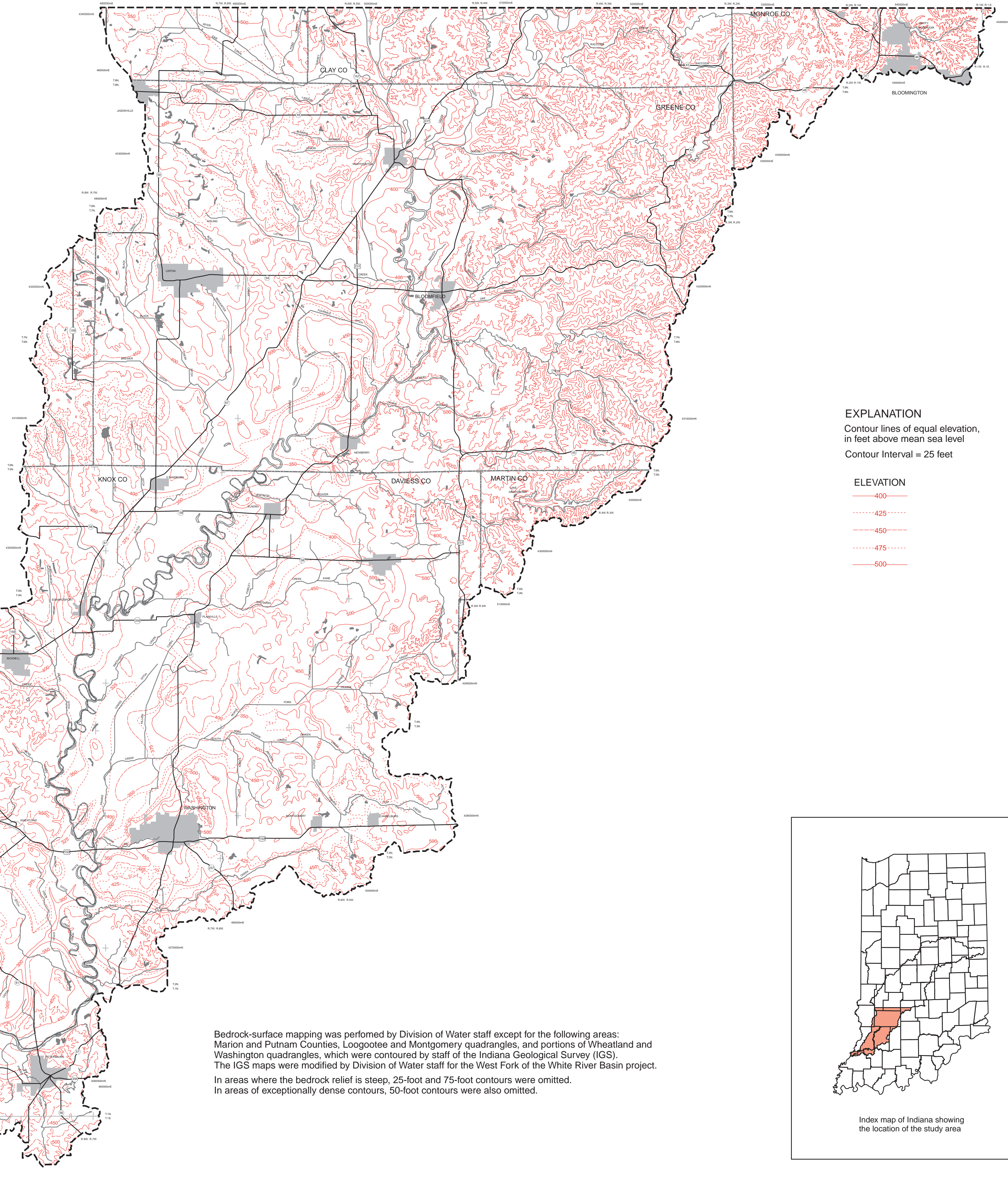


BEDROCK-SURFACE TOPOGRAPHY OF THE WEST FORK OF THE WHITE RIVER BASIN (SOUTH MAP)

STATE OF INDIANA
DEPARTMENT OF NATURAL RESOURCES
DIVISION OF WATER

WEST FORK OF THE WHITE RIVER BASIN

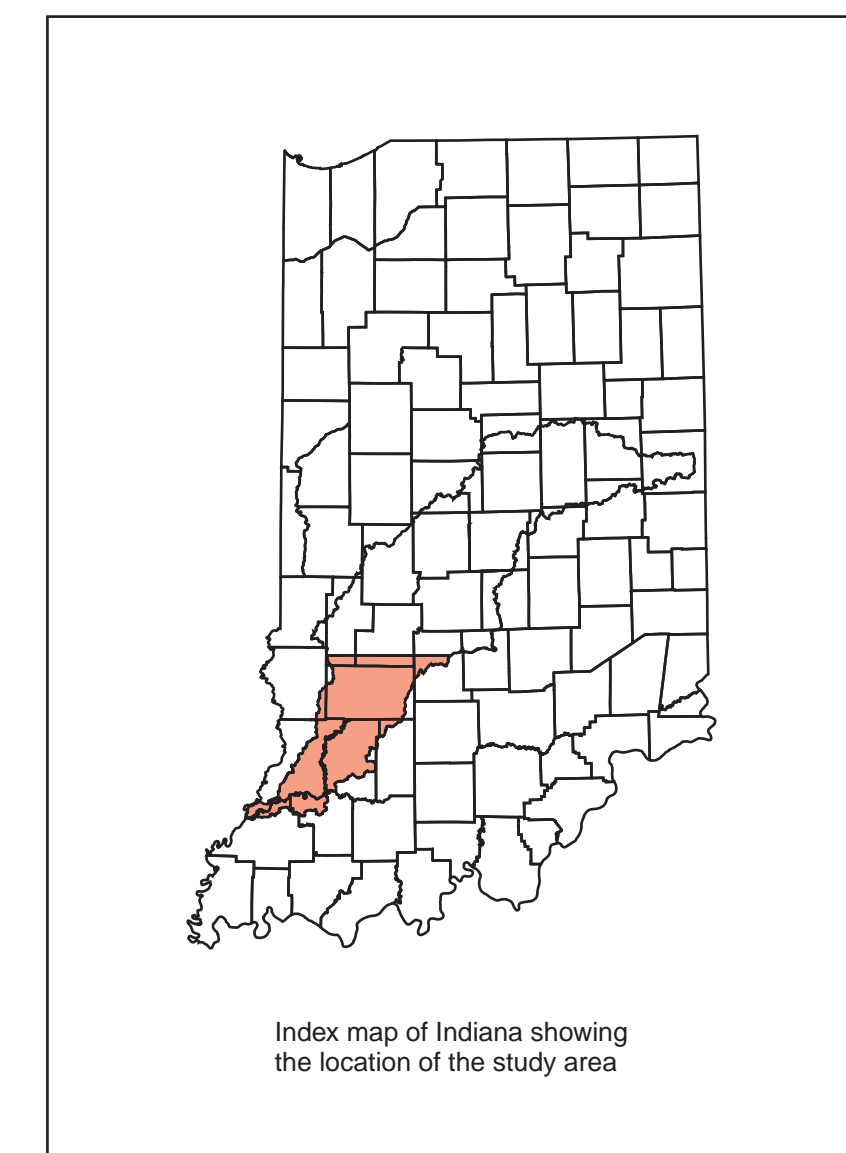
1:170,000



EXPLANATION
Contour lines of equal elevation,
in feet above mean sea level
Contour Interval = 25 feet

ELEVATION	
—	400
- - - -	425
—	450
- - - -	475
—	500

Bedrock-surface mapping was performed by Division of Water staff except for the following areas: Marion and Putnam Counties, Loogootee and Montgomery quadrangles, and portions of Wheatland and Washington quadrangles, which were contoured by staff of the Indiana Geological Survey (IGS). The IGS maps were modified by Division of Water staff for the West Fork of the White River Basin project. In areas where the bedrock relief is steep, 25-foot and 75-foot contours were omitted. In areas of exceptionally dense contours, 50-foot contours were also omitted.



Index map of Indiana showing the location of the study area

GIBSON CO