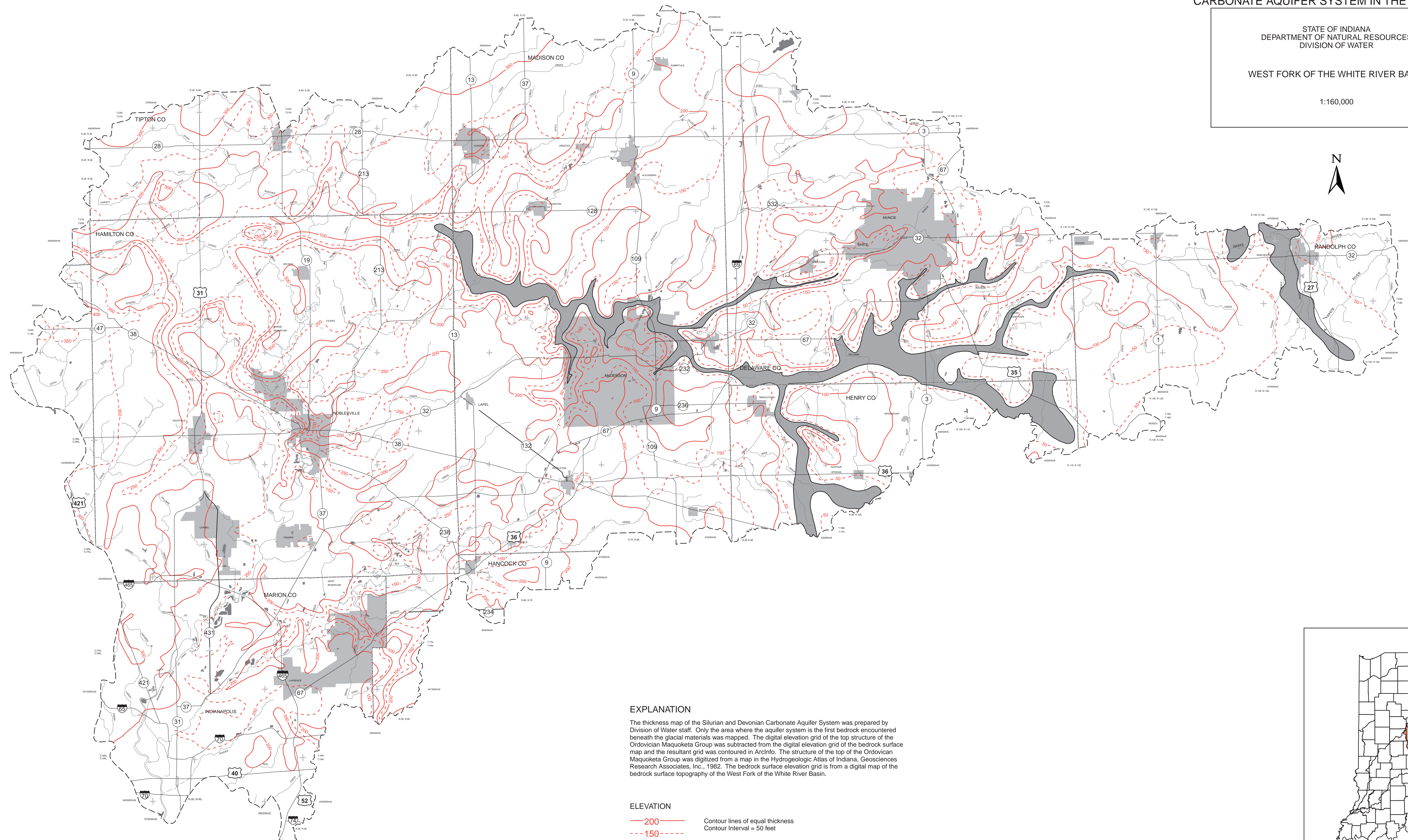


THICKNESS OF SILURIAN AND DEVONIAN CARBONATE AQUIFER SYSTEM IN THE CROP AREA

STATE OF INDIANA
DEPARTMENT OF NATURAL RESOURCES
DIVISION OF WATER

WEST FORK OF THE WHITE RIVER BASIN

1:160,000

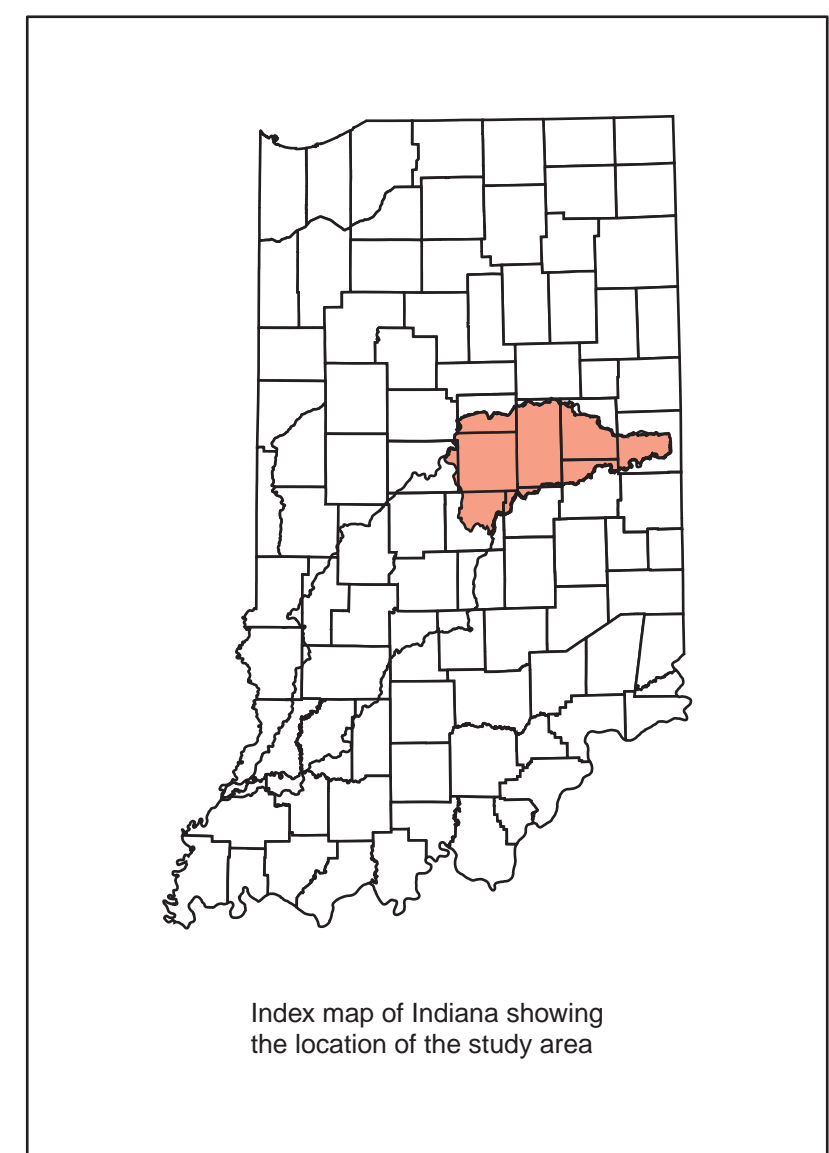


EXPLANATION

The thickness map of the Silurian and Devonian Carbonate Aquifer System was prepared by Division of Water staff. Only the area where the aquifer system is the first bedrock encountered beneath the glacial materials was mapped. The digital elevation grid of the top structure of the Ordovician Maquoketa Group was subtracted from the digital elevation grid of the bedrock surface map and the resultant grid was contoured in ArcInfo. The structure of the top of the Ordovician Maquoketa Group was digitized from a map in the Hydrogeologic Atlas of Indiana, Geosciences Research Associates, Inc., 1982. The bedrock surface elevation grid is from a digital map of the bedrock surface topography of the West Fork of the White River Basin.

ELEVATION

- 200 Contour lines of equal thickness
- 150 Contour Interval = 50 feet
- Area containing no Silurian and Devonian Carbonates



Index map of Indiana showing the location of the study area