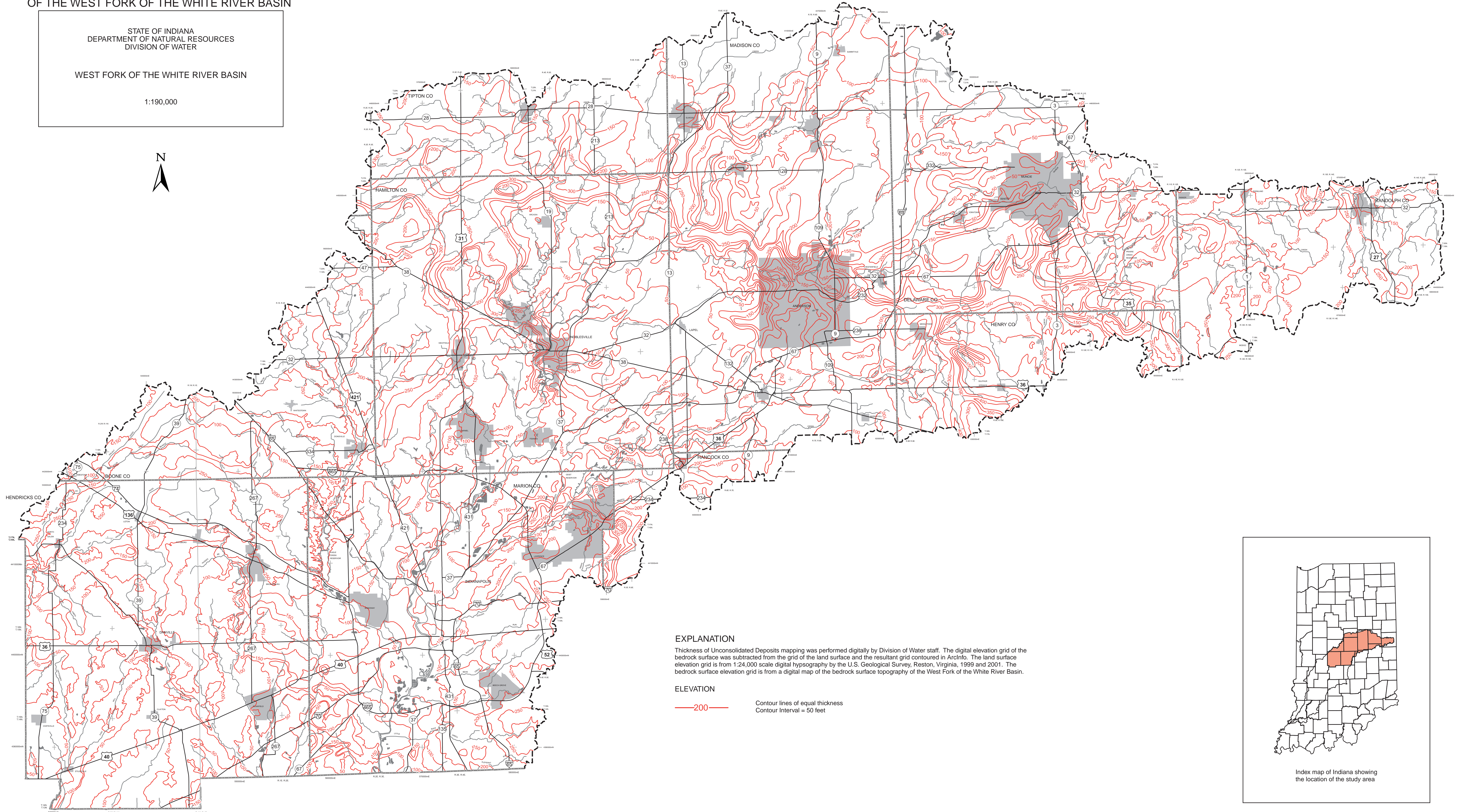


### THICKNESS OF UNCONSOLIDATED DEPOSITS OF PORTIONS OF THE WEST FORK OF THE WHITE RIVER BASIN

STATE OF INDIANA  
DEPARTMENT OF NATURAL RESOURCES  
DIVISION OF WATER  
  
WEST FORK OF THE WHITE RIVER BASIN  
  
1:190,000

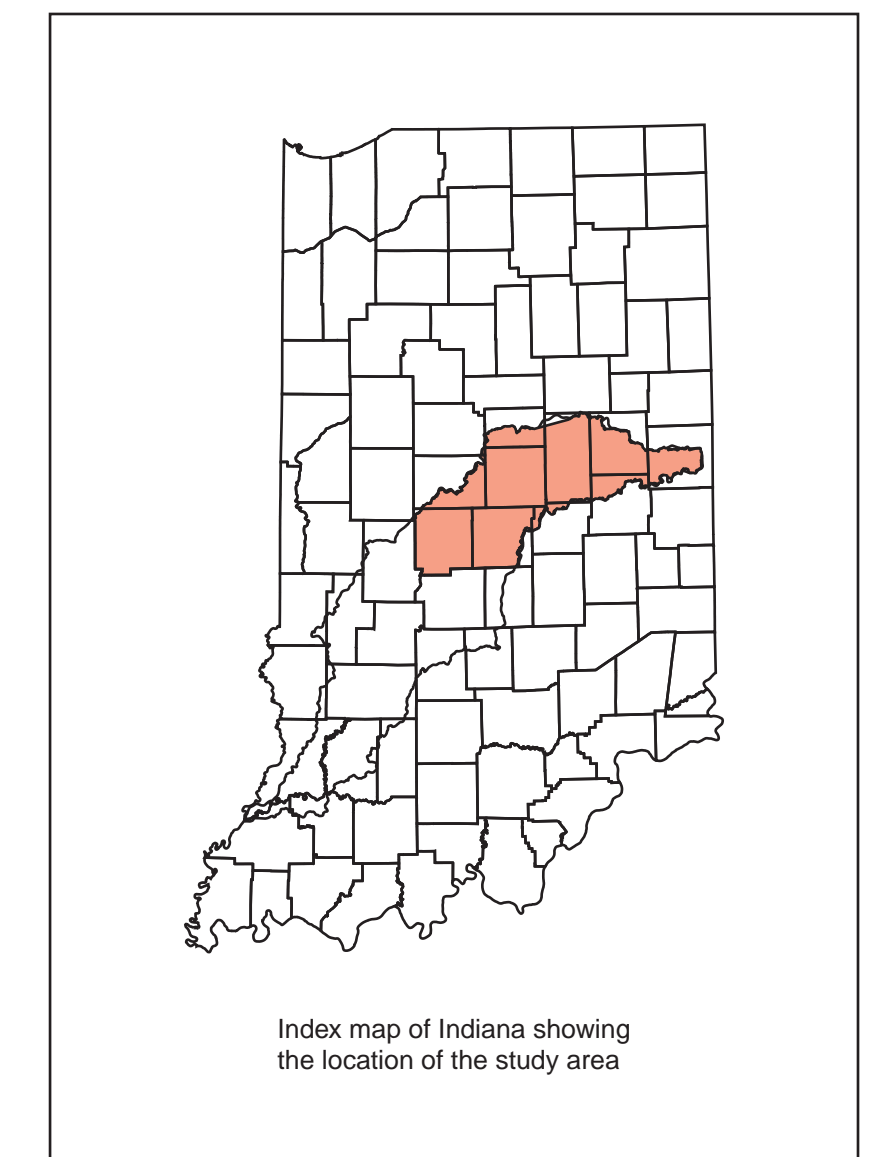


#### EXPLANATION

Thickness of Unconsolidated Deposits mapping was performed digitally by Division of Water staff. The digital elevation grid of the bedrock surface was subtracted from the grid of the land surface and the resultant grid contoured in ArcInfo. The land surface elevation grid is from 1:24,000 scale digital hypsography by the U.S. Geological Survey, Reston, Virginia, 1999 and 2001. The bedrock surface elevation grid is from a digital map of the bedrock surface topography of the West Fork of the White River Basin.

#### ELEVATION

—200— Contour lines of equal thickness  
Contour Interval = 50 feet



Index map of Indiana showing  
the location of the study area