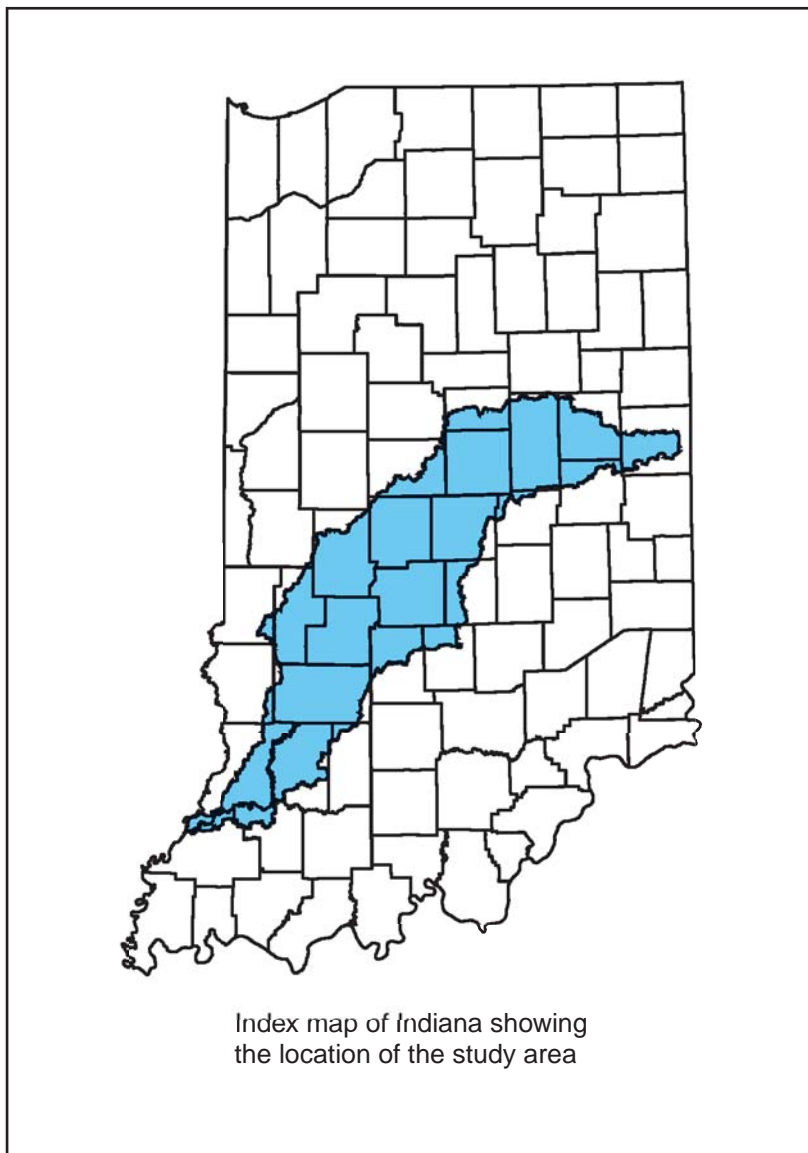
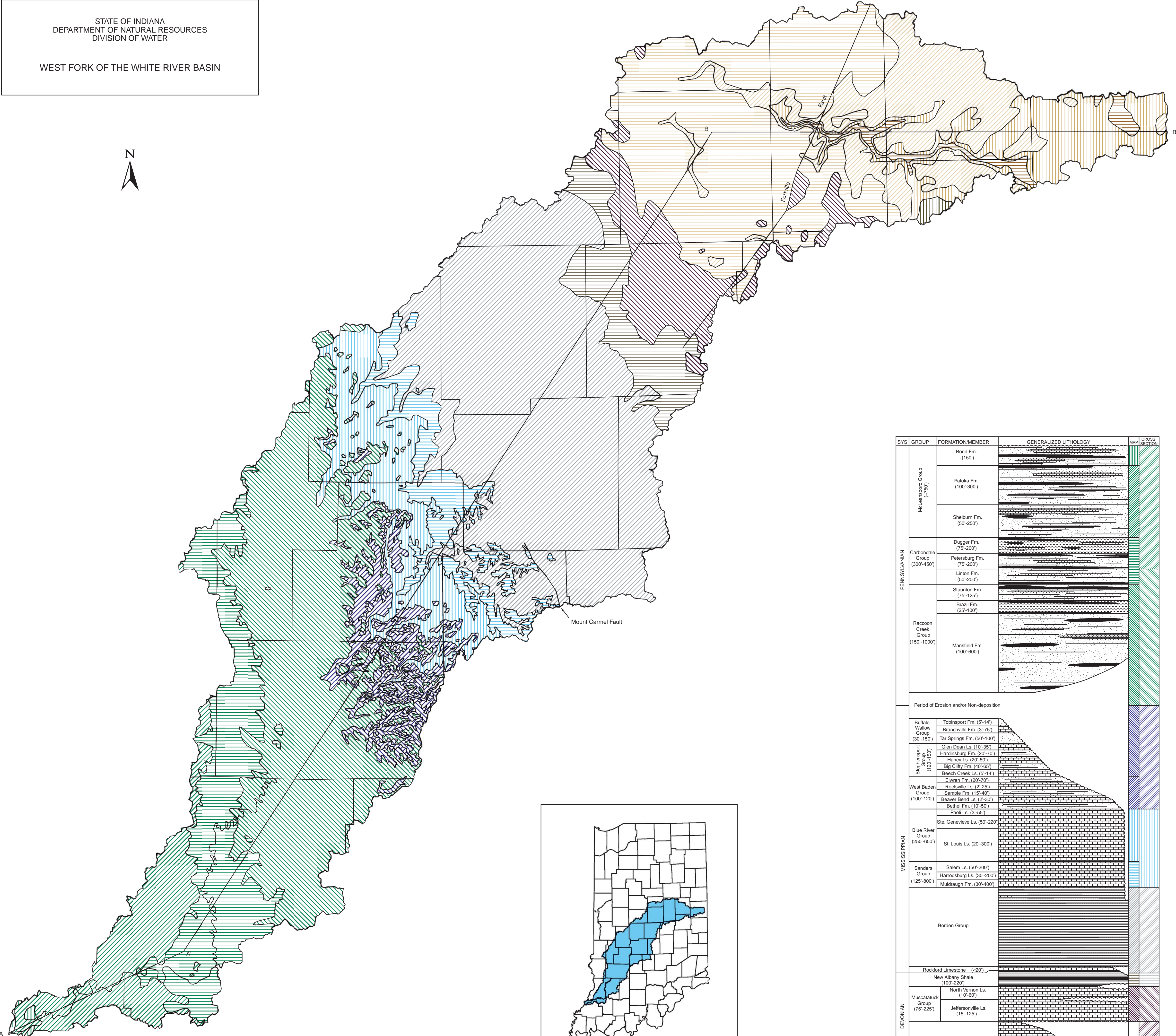


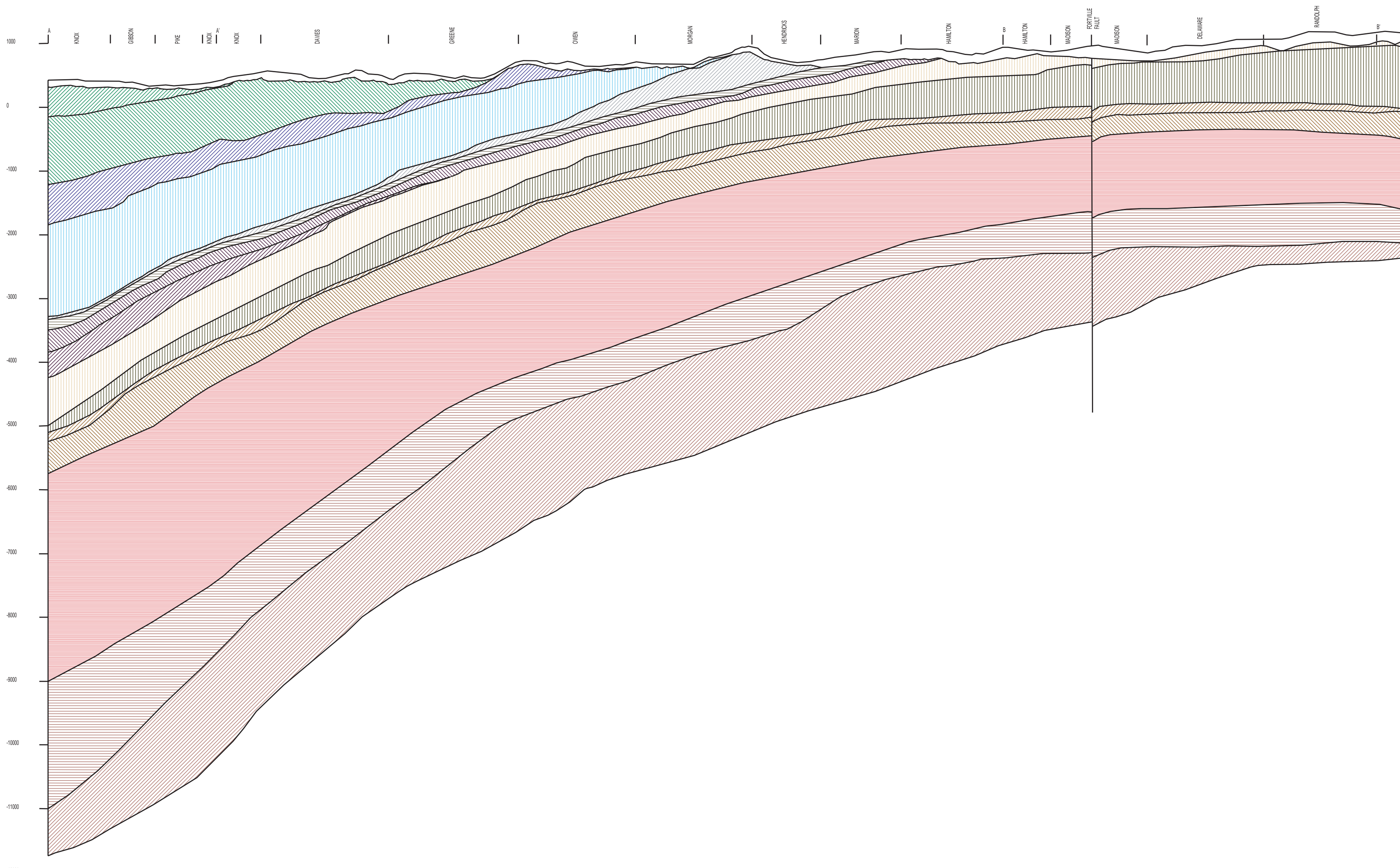
BEDROCK GEOLOGY

STATE OF INDIANA
DEPARTMENT OF NATURAL RESOURCES
DIVISION OF WATER

WEST FORK OF THE WHITE RIVER BASIN



Index map of Indiana showing the location of the study area



| SYS | GROUP | FORMATION/MEMBER | GENERALIZED LITHOLOGY | CROSS SECTION | |
|---|--------------------------------|---|---|---|---|
| PENNSYLVANIAN | Muscatauck Group (750) | Bond Fm. (~150) | [Lithology: thin, alternating layers] | [Cross Section: thin, alternating layers] | |
| | | Potsda Fm. (100-300) | [Lithology: thin, alternating layers] | [Cross Section: thin, alternating layers] | |
| | | Shelburn Fm. (50-250) | [Lithology: thin, alternating layers] | [Cross Section: thin, alternating layers] | |
| | Carboniferous Group (300-450) | Dugger Fm. (75-200) | [Lithology: thin, alternating layers] | [Cross Section: thin, alternating layers] | |
| | | Petersburg Fm. (75-200) | [Lithology: thin, alternating layers] | [Cross Section: thin, alternating layers] | |
| | | Linton Fm. (50-300) | [Lithology: thin, alternating layers] | [Cross Section: thin, alternating layers] | |
| | | Stanton Fm. (75-125) | [Lithology: thin, alternating layers] | [Cross Section: thin, alternating layers] | |
| | Raccoon Creek Group (150-1000) | Brazel Fm. (25-100) | [Lithology: thin, alternating layers] | [Cross Section: thin, alternating layers] | |
| | | Manfield Fm. (100-600) | [Lithology: thin, alternating layers] | [Cross Section: thin, alternating layers] | |
| | | Period of Erosion and/or Non-deposition | | | |
| MISSISSIPPIAN | Buffalo Wallow Group (20-150) | Tobago Fm. (5-14) | [Lithology: thin, alternating layers] | [Cross Section: thin, alternating layers] | |
| | | Branchville Fm. (3-75) | [Lithology: thin, alternating layers] | [Cross Section: thin, alternating layers] | |
| | | Tar Springs Fm. (50-100) | [Lithology: thin, alternating layers] | [Cross Section: thin, alternating layers] | |
| | Shepherd Group (10-150) | Glen Dean Ls. (10-35) | [Lithology: thin, alternating layers] | [Cross Section: thin, alternating layers] | |
| | | Hardinsburg Fm. (20-70) | [Lithology: thin, alternating layers] | [Cross Section: thin, alternating layers] | |
| | | Henry Ls. (20-50) | [Lithology: thin, alternating layers] | [Cross Section: thin, alternating layers] | |
| | | Big City Fm. (40-65) | [Lithology: thin, alternating layers] | [Cross Section: thin, alternating layers] | |
| | West Baden Group (100-100) | Beech Creek Ls. (5-14) | [Lithology: thin, alternating layers] | [Cross Section: thin, alternating layers] | |
| | | Elmer Fm. (20-70) | [Lithology: thin, alternating layers] | [Cross Section: thin, alternating layers] | |
| | | Restville Ls. (2-25) | [Lithology: thin, alternating layers] | [Cross Section: thin, alternating layers] | |
| | | Sample Fm. (15-40) | [Lithology: thin, alternating layers] | [Cross Section: thin, alternating layers] | |
| | Blue River Group (250-650) | Bever Bend Ls. (2-30) | [Lithology: thin, alternating layers] | [Cross Section: thin, alternating layers] | |
| | | Bethel Fm. (10-50) | [Lithology: thin, alternating layers] | [Cross Section: thin, alternating layers] | |
| | | Paoli Ls. (3-25) | [Lithology: thin, alternating layers] | [Cross Section: thin, alternating layers] | |
| | | St. Genevieve Ls. (50-220) | [Lithology: thin, alternating layers] | [Cross Section: thin, alternating layers] | |
| Sanders Group (125-800) | St. Louis Ls. (20-300) | [Lithology: thin, alternating layers] | [Cross Section: thin, alternating layers] | | |
| | Salem Ls. (50-200) | [Lithology: thin, alternating layers] | [Cross Section: thin, alternating layers] | | |
| | Harrodsburg Ls. (30-200) | [Lithology: thin, alternating layers] | [Cross Section: thin, alternating layers] | | |
| DEVONIAN | Borden Group | Mudraugh Fm. (30-400) | [Lithology: thin, alternating layers] | [Cross Section: thin, alternating layers] | |
| | | Rockford Limestone (<20) | [Lithology: thin, alternating layers] | [Cross Section: thin, alternating layers] | |
| | New Albany Shale (100-220) | North Vernon Ls. (10-60) | [Lithology: thin, alternating layers] | [Cross Section: thin, alternating layers] | |
| | | Muscatauck Group (75-225) | Jeffersonville Ls. (15-125) | [Lithology: thin, alternating layers] | [Cross Section: thin, alternating layers] |
| | SILURIAN | Wabash Fm. (150-425) | New Harmony Group (<450) | [Lithology: thin, alternating layers] | [Cross Section: thin, alternating layers] |
| | | | Liston Creek Ls. Mbr. (50-125) | [Lithology: thin, alternating layers] | [Cross Section: thin, alternating layers] |
| | | Pleasant Mills Fm. (50-100) | Mississippian Shale Mbr. (<50-100) | [Lithology: thin, alternating layers] | [Cross Section: thin, alternating layers] |
| | Louisville Member (50-100) | | Walton Mbr. (10-25) | [Lithology: thin, alternating layers] | [Cross Section: thin, alternating layers] |
| | ORDOVICIAN | Salamine Dolomite (25-100) | Lumberport Dol. (<50) | [Lithology: thin, alternating layers] | [Cross Section: thin, alternating layers] |
| | | | Period of Erosion and/or Non-deposition | | |
| Maquoketa Group (300-650) | | Sexton Creek Ls. (10-125) | [Lithology: thin, alternating layers] | [Cross Section: thin, alternating layers] | |
| | | Brassfield Ls. (10-25) | [Lithology: thin, alternating layers] | [Cross Section: thin, alternating layers] | |
| Cambrian | | Munsing Group (450-1000) | Period of Erosion and/or Non-deposition | | |
| | Daves Formation (<200) | | [Lithology: thin, alternating layers] | [Cross Section: thin, alternating layers] | |
| | Mount Simon SS (500-1800) | Eau Claire Fm. (450-1000) | [Lithology: thin, alternating layers] | [Cross Section: thin, alternating layers] | |
| Period of Erosion and/or Non-deposition | | | | | |

*Not present at the bedrock surface