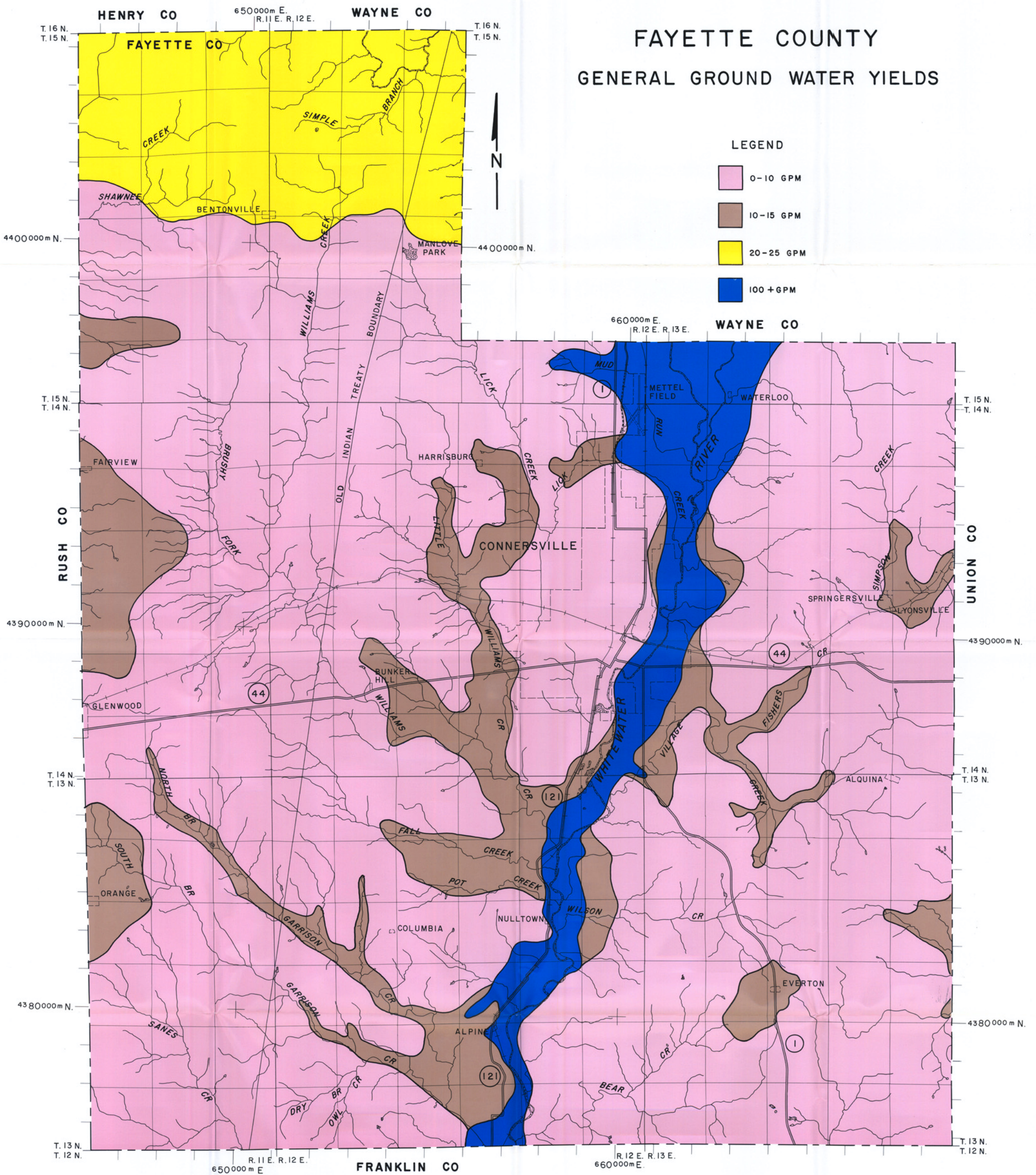


DEPARTMENT OF NATURAL RESOURCES

DIVISION OF WATER

# FAYETTE COUNTY GENERAL GROUND WATER YIELDS



### LEGEND

- 0-10 GPM
- 10-15 GPM
- 20-25 GPM
- 100+ GPM

Compiled from USGS 1:24000 scale topographic maps.

SCALE 1:48000

