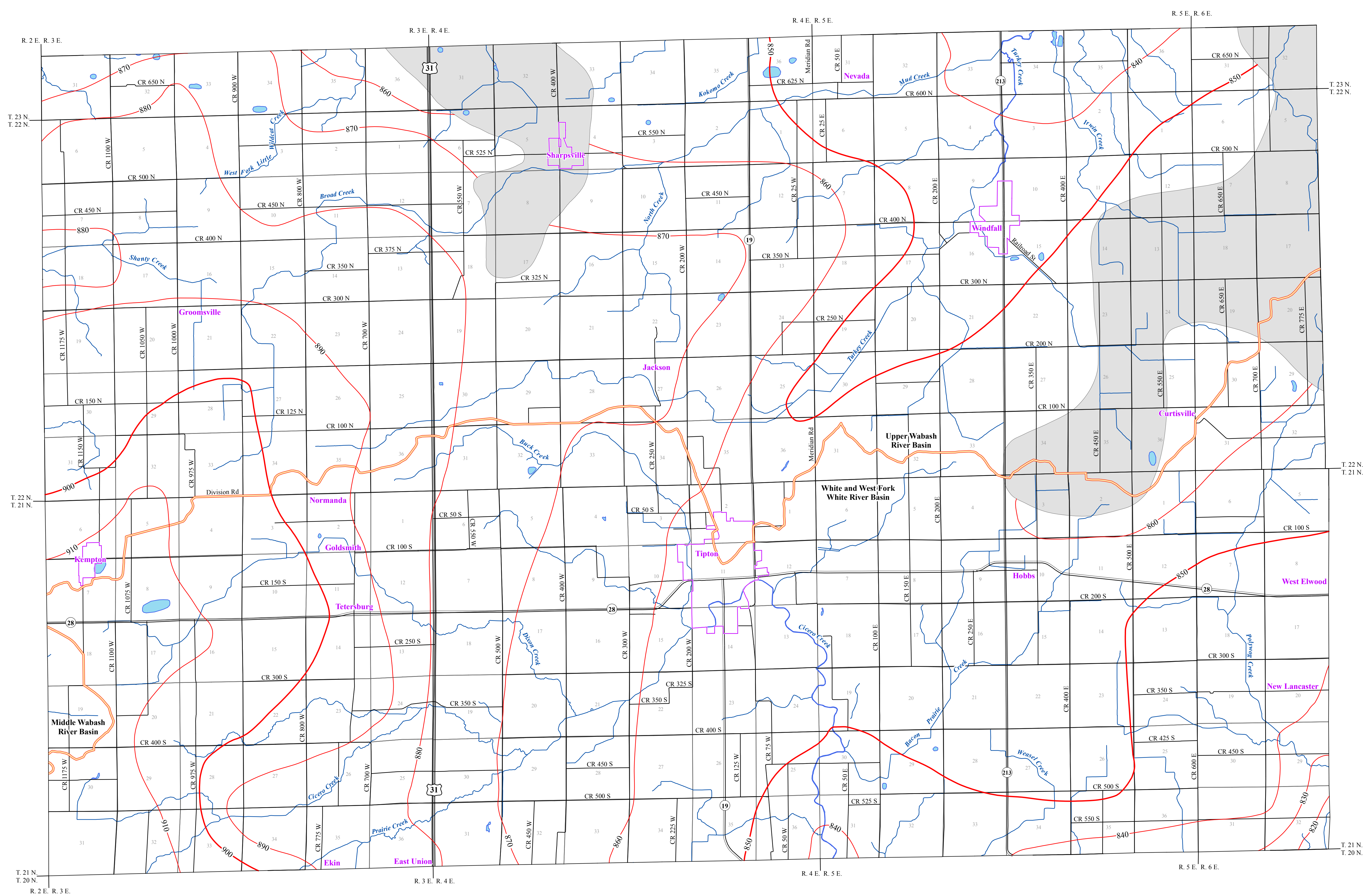


POTENTIOMETRIC SURFACE MAP OF THE UNCONSOLIDATED AQUIFERS OF TIPTON COUNTY, INDIANA



Tipton County, Indiana is located in the central portion of the state bounded by Clinton, Howard, Grant, Madison, and Hamilton counties to the west, north, northeast, east, and south, respectively. The northern half of the county is situated within the Upper Wabash River Basin, and a small portion in the southwest is within the Middle Wabash River Basin. The remainder of the southern half of the county is situated within the White and West Fork White River Basin.

The Potentiometric Surface Map (PSM) of the unconsolidated aquifers of Tipton County is mapped by contouring the elevations of 1166 static water levels reported on well records received primarily over a 50-year period. These wells are completed in unconsolidated aquifers at various depths and typically under confined conditions (bounded by impermeable layers above and below the water bearing formation). However, some wells are completed in unconfined settings with water bearing formations not bounded by impermeable layers. The potentiometric surface is a measure of the pressure on water in a water bearing formation, or aquifer. Water in an unconfined aquifer is at atmospheric pressure and will not rise in a well above the top of the water bearing formation. In contrast, water in a confined aquifer, which is under hydrostatic pressure, will rise in a well above the top of the water bearing formation.

Static water level measurements in individual wells used to construct county potentiometric surface contours are indicative of the water level at the time of well completion. The groundwater level within an aquifer constantly fluctuates in response to rainfall, evapotranspiration, groundwater movement, and pumpage. Therefore, current site-specific conditions may differ due to local or seasonal variations in measured static water levels. Because fluctuations in groundwater are typically small, static water levels can be used to construct a generalized PSM. Groundwater flow is naturally from areas of recharge toward areas of discharge. As a general rule, but certainly not always, groundwater flow approximates the overlying topography and intersects the land surface at major streams. The contours were determined based on the amount of data and the degree of change in water levels between wells.

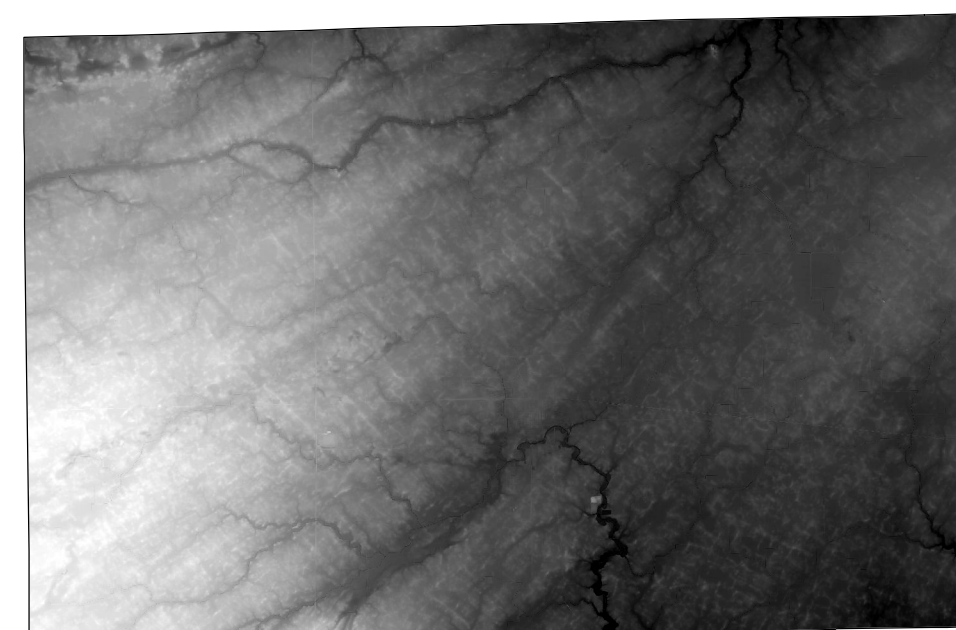
The potentiometric surface contours are mapped primarily for the upper 100 feet of the unconsolidated materials and utilize data for wells 100 feet or less in depth. When shallow data is sparse or unavailable in an area, deeper wells are used to complement the mapping. Unconsolidated potentiometric surface elevation contours have not been extended within a portion of north-central and northeast Tipton County. This area is either lacking in data and/or covered by thin or unproductive unconsolidated deposits.

Data collected to generate the PSM were standardized and validated for accuracy. Universal Transverse Mercator (UTM) coordinates for the water wells were either physically obtained in the field, determined through address geocoding, or determined based on water well records. The location of the majority of the water well records used to make the PSM were field verified. Elevation data were derived from a digital elevation model based on LiDAR. Quality control/quality assurance procedures were utilized to refine or remove data where errors were readily apparent.

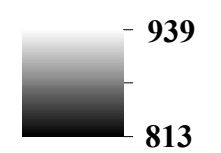
Potentiometric surface contours are developed based on the static water levels from the unconsolidated aquifer systems and displayed here with 10-foot contours and 50-foot index contours. Potentiometric surface contours in Tipton County range from a high of 910 feet mean sea level (msl) in the southwest, to a low of 820 feet msl in the southeast. Groundwater flow direction is generally to the northeast, north of the major basin boundary. Groundwater flow transitions to the east and southeast, south of the major drainage basin divide.

The county PSM can be used to define the regional groundwater flow path and to identify significant areas of groundwater recharge and discharge. County PSM's represent overall regional characteristics and are not intended to be a substitute for site-specific studies.

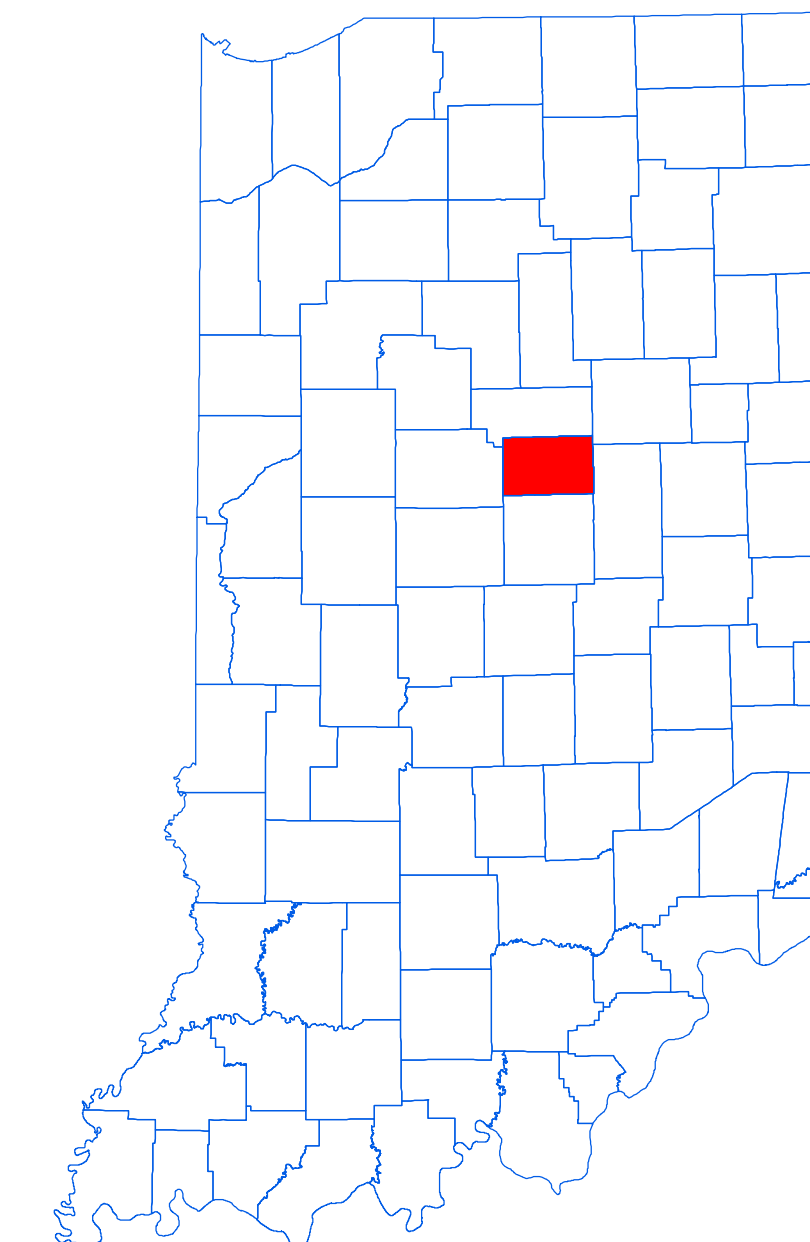
Digital Elevation Model of Tipton County, Indiana



Elevation (feet)

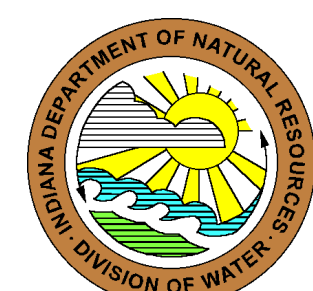
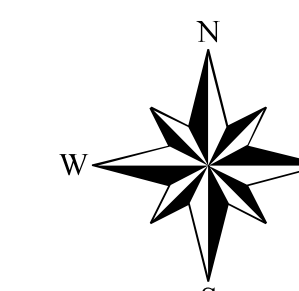
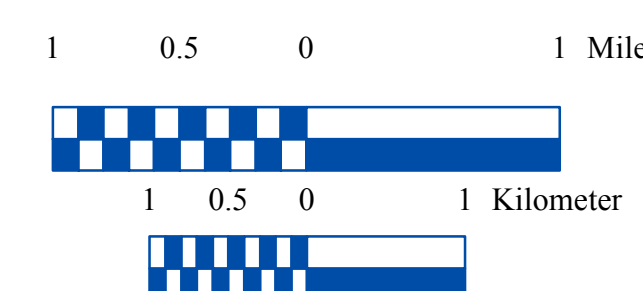


Location Map



EXPLANATION

- 800 Potentiometric Contour interval 10 feet
- Stream
- County Road
- State Road
- US Highway
- Basin Boundary
- No Aquifer Material or Limited Data
- Municipal Boundary
- Lake



Map Use and Disclaimer Statement

We request that the following agency be acknowledged in products derived from this map: Indiana Department of Natural Resources, Division of Water.

This map was compiled by staff of the Indiana Department of Natural Resources, Division of Water using data believed to be reasonably accurate. However, a degree of error is inherent in all maps. This product is distributed "as is" without warranties of any kind, either expressed or implied. This map is intended for use only at the published scale.

This map is created from several existing shapefiles. Township and Range Lines of Indiana (line shapefile, 20020621), Land Survey Lines of Indiana (polygon shapefile, 20020621), and County Boundaries of Indiana (polygon shapefile, 20020621), are all from the Indiana Geological Survey and based on a 1:24,000 scale. Roads (TIGER and INDO1) (line shapefile, 2005) is from the Indiana Department of Transportation and based on a 1:100,000 scale. System1 (line shapefile, 2003) is from the Indiana Department of Transportation and based on a 1:24,000 scale. Incorporated Areas in Indiana 2000 (polygon shapefile, 20021000) is from the U.S. Census Bureau and based on a 1:100,000 scale. Hydrography, Streams (NHD) (line shapefile, 20081218), Rivers (NHD) (polygon shapefile, 20081218), and Lakes (NHD) (polygon shapefile, 20081218) are from the U.S. Geological Survey and based on a 1:24,000 scale. Basin boundaries are modified from Watershed Boundary Dataset (polygon shapefile, 2008) from the Natural Resource Conservation Service and based on a 1:24,000 scale. Digital Elevation Model image is derived from the Indiana OrthoLiDAR Statewide Collection Program (2011). Tipton County Unconsolidated No Aquifer Material or Limited Data (polygon shapefile, Korinek, 2013) and Potentiometric Surface Contours of the Unconsolidated Aquifers of Tipton County, Indiana (line shapefile, Korinek, 2013) are based on a 1:24,000 scale.

Potentiometric Surface Map of the Unconsolidated Aquifers of Tipton County, Indiana

by
Ginger C. Korinek
Division of Water, Resource Assessment Section

December 2013