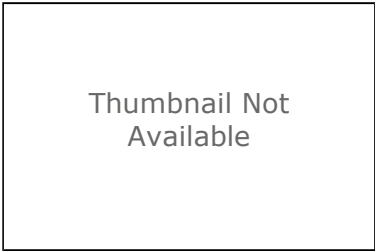


Potentiometric Surface Map Of The Unconsolidated Aquifers of Carroll County, Indiana

Shapefile



Tags

Potentiometric surface, static water level, groundwater, water wells, water tables, Carroll County, Indiana, USA

Summary

Display and/or analyses requiring spatial distribution of potentiometric surface elevations in Carroll County.

Description

This file is a digital geospatial polyline coverage of the unconsolidated potentiometric surface elevations mapped for Carroll County Indiana.

Credits

There are no credits for this item.

Use limitations

See access and use constraints information.

Extent

West	-86.774820	East	-86.372444
North	40.737597	South	40.430511

Scale Range

Maximum (zoomed in)	1:5,000
Minimum (zoomed out)	1:150,000,000

ArcGIS Metadata ►

Topics and Keywords ►

THEMES OR CATEGORIES OF THE RESOURCE geoscientificInformation

*CONTENT TYPE Downloadable Data

EXPORT TO FGDC CSDGM XML FORMAT AS RESOURCE DESCRIPTION No

PLACE KEYWORDS Carroll, Indiana, USA

THEME KEYWORDS Potentiometric surface, static water level, groundwater, water wells, water tables

Hide Topics and Keywords ▲

Citation ►

TITLE Potentiometric Surface Map Of The Unconsolidated Aquifers of Carroll County, Indiana

CREATION DATE 2013-12-01 00:00:00

PUBLICATION DATE 2013-12-01 00:00:00

EDITION 1

EDITION DATE 2013-12-01

PRESENTATION FORMATS *digital map

SERIES

NAME Unconsolidated Potentiometric Surface Map

ISSUE PSM 34-A

OTHER CITATION DETAILS

This map was compiled from multiple unpublished work maps based on USGS quadrangles at 1:24,000 scale: Anoka, Brookston, Burlington, Burrows, Clymers, Deer Creek, Delphi, Flora, Monticello South, Pyrmont, Rossville, Yeoman, and Young America.

[Hide Citation ▲](#)

Citation Contacts ►

RESPONSIBLE PARTY

INDIVIDUAL'S NAME Glenn E. Grove

ORGANIZATION'S NAME Indiana Department of Natural Resources, Division of Water

CONTACT'S POSITION Resource Assessment Section

CONTACT'S ROLE originator

CONTACT INFORMATION ►

PHONE

VOICE 317-232-4160

FAX 317-233-4579

ADDRESS

TYPE both

DELIVERY POINT 402 W. Washington Street W264

CITY Indianapolis

ADMINISTRATIVE AREA Indiana

POSTAL CODE 46204

COUNTRY UNITED STATES

E-MAIL ADDRESS ggrove@dnr.IN.gov

HOURS OF SERVICE

8:15am - 4:15pm M-F except Government Holidays

[Hide Contact information ▲](#)

RESPONSIBLE PARTY

ORGANIZATION'S NAME Indiana Department of Natural Resources, Division of Water

CONTACT'S ROLE publisher

CONTACT INFORMATION ►

ADDRESS

DELIVERY POINT Indianapolis, Indiana, USA

[Hide Contact information ▲](#)

[Hide Citation Contacts ▲](#)

Resource Details ►

DATASET LANGUAGES English (UNITED STATES)

DATASET CHARACTER SET utf8 - 8 bit UCS Transfer Format

STATUS completed

SPATIAL REPRESENTATION TYPE *vector

*PROCESSING ENVIRONMENT Microsoft Windows XP Version 5.1 (Build 2600) Service Pack 3; Esri ArcGIS 10.2.1.3497

ARCGIS ITEM PROPERTIES

*NAME UNC_PSM_Carroll_Co_IN

*SIZE 0.621

*LOCATION file://

\\iotfilp19pw\dnr\dow\common\RA_FILES_ONLINE\34_Carroll\34_Carroll_County_PSM_shapefiles\UNC_PSM_Carroll_Co_IN.shp

*ACCESS PROTOCOL Local Area Network

Hide Resource Details ▲

Extents ►

EXTENT

DESCRIPTION

Latitude Longitude

TEMPORAL EXTENT

DATE AND TIME 2013-11-01 00:00:00

EXTENT

GEOGRAPHIC EXTENT

BOUNDING RECTANGLE

EXTENT TYPE Extent used for searching

*WEST LONGITUDE -86.774820

*EAST LONGITUDE -86.372444

*NORTH LATITUDE 40.737597

*SOUTH LATITUDE 40.430511

*EXTENT CONTAINS THE RESOURCE Yes

EXTENT IN THE ITEM'S COORDINATE SYSTEM

*WEST LONGITUDE 519099.661000

*EAST LONGITUDE 552988.506300

*SOUTH LATITUDE 4475728.839800

*NORTH LATITUDE 4509653.086700

*EXTENT CONTAINS THE RESOURCE Yes

Hide Extents ▲

Resource Points of Contact ►

POINT OF CONTACT

INDIVIDUAL'S NAME Glenn E. Grove

ORGANIZATION'S NAME Indiana Department of Natural Resources, Division of Water

CONTACT'S POSITION Resource Assessment Section

CONTACT'S ROLE author

CONTACT INFORMATION ►

PHONE

VOICE 317-232-4160

FAX 317-233-4579

ADDRESS

TYPE both

DELIVERY POINT 402 W. Washington Street W264

CITY Indianapolis

ADMINISTRATIVE AREA Indiana

POSTAL CODE 46204

COUNTRY UNITED STATES

E-MAIL ADDRESS ggrove@dnr.IN.gov

HOURS OF SERVICE

8:15am - 4:15pm M-F except Government Holidays

[Hide Contact information ▲](#)

[Hide Resource Points of Contact ▲](#)

Resource Maintenance ►

RESOURCE MAINTENANCE

UPDATE FREQUENCY not planned

[Hide Resource Maintenance ▲](#)

Resource Constraints ►

CONSTRAINTS

LIMITATIONS OF USE

See access and use constraints information.

LEGAL CONSTRAINTS

ACCESS CONSTRAINTS other restrictions

OTHER CONSTRAINTS

The Indiana Department of Natural Resources, Division of Water has compiled this data set using data believed to be reasonably accurate. However, the Division makes no representation as to the accuracy, completeness, or usefulness of the data or data set. A degree of error is inherent in all maps. This map is intended for use only at the published scale. Reference to any specific commercial product, process, or service does not constitute an endorsement, recommendation, or favoring by the Division. Copyright 2013, Indiana Department of Natural Resources, Division of Water All Rights Reserved Any copying, adaptation, or distribution of these data without the express written consent of the Indiana Department of Natural Resources, Division of Water is discouraged.

[Hide Resource Constraints ▲](#)

Spatial Reference ►

ARCGIS COORDINATE SYSTEM

*TYPE Projected

*GEOGRAPHIC COORDINATE REFERENCE GCS_North_American_1983

*PROJECTION NAD_1983_UTM_Zone_16N

*COORDINATE REFERENCE DETAILS

PROJECTED COORDINATE SYSTEM

WELL-KNOWN IDENTIFIER 26916

X ORIGIN -5120900

Y ORIGIN -9998100

XY SCALE 450445547.3910538

Z ORIGIN -100000

Z SCALE 10000

M ORIGIN -100000

M SCALE 10000

XY TOLERANCE 0.001

Z TOLERANCE 0.001

M TOLERANCE 0.001

HIGH PRECISION true

LATEST WELL-KNOWN IDENTIFIER 26916

WELL-KNOWN TEXT PROJCS["NAD_1983_UTM_Zone_16N",GEOGCS["GCS_North_American_1983",DATUM["D_North_American_1983",SPHEROID["GRS_1980",6378137.0,298.257222101]],PRIMEM["Greenwich",0.0],UNIT["Degree",0.0174532925199433]],PROJECTION["Transverse_Mercator"],PARAMETER["False_Easting",500000.0],PARAMETER["False_Northing",0.0],PARAMETER["Central_Meridian",-87.0],PARAMETER["Scale_Factor",0.9996],PARAMETER["Latitude_Of_Origin",0.0],UNIT["Meter",1.0],AUTHORITY["EPSG",26916]]

REFERENCE SYSTEM IDENTIFIER

- *VALUE 26916
- *CODESPACE EPSG
- *VERSION 8.2.6

[Hide Spatial Reference ▲](#)

Spatial Data Properties ►

VECTOR ►

- *LEVEL OF TOPOLOGY FOR THIS DATASET geometry only

GEOMETRIC OBJECTS

- FEATURE CLASS NAME UNC_PSM_Carroll_Co_IN
- *OBJECT TYPE composite
- *OBJECT COUNT 74

[Hide Vector ▲](#)

ARCGIS FEATURE CLASS PROPERTIES ►

- FEATURE CLASS NAME UNC_PSM_Carroll_Co_IN
- *FEATURE TYPE Simple
- *GEOMETRY TYPE Polyline
- *HAS TOPOLOGY FALSE
- *FEATURE COUNT 74
- *SPATIAL INDEX TRUE
- *LINEAR REFERENCING FALSE

[Hide ArcGIS Feature Class Properties ▲](#)

[Hide Spatial Data Properties ▲](#)

Data Quality ►

SCOPE OF QUALITY INFORMATION ►

- RESOURCE LEVEL dataset

[Hide Scope of quality information ▲](#)

DATA QUALITY REPORT - COMPLETENESS OMISSION ►

- DIMENSION horizontal

MEASURE DESCRIPTION

In conducting the mapping, the author(s) evaluated hundreds of water well records, especially those having relatively complete information on well location, static water level, well depth, ground elevation, and lithology. There were areas in the county with sparse information because of lack of well records or incomplete records.

[Hide Data quality report - Completeness omission ▲](#)

DATA QUALITY REPORT - QUANTITATIVE ATTRIBUTE ACCURACY ►

- DIMENSION horizontal

MEASURE DESCRIPTION

The mapping was conducted after a thorough documentation of well locations and water well record details.

- EVALUATION TYPE direct internal

[Hide Data quality report - Quantitative attribute accuracy ▲](#)

DATA QUALITY REPORT - ABSOLUTE EXTERNAL POSITIONAL ACCURACY ▶

MEASURE DESCRIPTION

The locations of many wells were field checked and the locations posted on 7.5 minute topographic maps. Visual confirmation of wells was not always possible. Many locations were based only on the street address, driving directions, or other location information provided on the well record.

Hide Data quality report - Absolute external positional accuracy ▲

Hide Data Quality ▲

Lineage ▶

PROCESS STEP ▶

WHEN THE PROCESS OCCURRED 2013-11-01 00:00:00

DESCRIPTION

After selection of water well records was complete, specific well data and other maps and reports were considered in the mapping process. For example, ground elevation, static water level, well depth, aquifer top and bottom elevation and lithology were obtained from well records. Other maps and reports included regional potentiometric surface elevations, hydrogeologic settings, groundwater availability, bedrock topography, and surface topography.

Hide Process step ▲

PROCESS STEP ▶

WHEN THE PROCESS OCCURRED 2013-11-01 00:00:00

DESCRIPTION

Data were selected by careful evaluation of water well records to determine if the wells were field located and if they contained complete and reasonable information.

Hide Process step ▲

PROCESS STEP ▶

WHEN THE PROCESS OCCURRED 2013-11-01 00:00:00

DESCRIPTION

A polyline coverage was created using the heads-up method and attributed by Glenn E. Grove. Attribute definitions are described below.

Hide Process step ▲

SOURCE DATA ▶

DESCRIPTION

Water well records from the IDNR-DOW well record database; USGS topography maps; various consultant geotechnical reports

SOURCE CITATION ▶

TITLE Potentiometric Surface Map of the Unconsolidated Aquifers of Carroll County, Indiana

PUBLICATION DATE 2013-12-01 00:00:00

EDITION 1

SERIES

NAME Unconsolidated Potentiometric Surface Map

ISSUE PSM 34-A

RESPONSIBLE PARTY

INDIVIDUAL'S NAME Glenn E. Grove

ORGANIZATION'S NAME Indiana Department of Natural Resources, Division of Water

CONTACT'S POSITION Resource Assessment Section

CONTACT'S ROLE originator

RESPONSIBLE PARTY

ORGANIZATION'S NAME Indiana Department of Natural Resources, Division of Water

CONTACT'S ROLE publisher

[Hide Source citation ▲](#)

[Hide Source data ▲](#)

[Hide Lineage ▲](#)

Distribution ►

DISTRIBUTOR ►

CONTACT INFORMATION

INDIVIDUAL'S NAME Glenn E. Grove

ORGANIZATION'S NAME Indiana Department of Natural Resources, Division of Water

CONTACT'S POSITION Resource Assessment Section

CONTACT'S ROLE distributor

CONTACT INFORMATION ►

PHONE

VOICE 317-232-4160

FAX 317-233-4579

ADDRESS

TYPE both

DELIVERY POINT 402 W. Washington Street W264

CITY Indianapolis

ADMINISTRATIVE AREA Indiana

POSTAL CODE 46204

COUNTRY UNITED STATES

E-MAIL ADDRESS ggrove@dnr.IN.gov

HOURS OF SERVICE

8:15am - 4:15pm M-F except Government Holidays

[Hide Contact information ▲](#)

[Hide Distributor ▲](#)

DISTRIBUTION FORMAT

*NAME Shapefile

TRANSFER OPTIONS

*TRANSFER SIZE 0.621

ONLINE SOURCE

LOCATION <http://www.in.gov/dnr/water/7256.htm>

[Hide Distribution ▲](#)

Fields ►

DETAILS FOR OBJECT [UNC_PSM_Carroll_Co_IN ►](#)

*TYPE Feature Class
*ROW COUNT 74
DEFINITION
 polyline

DEFINITION SOURCE
 ESRI

FIELD FID ▶
 *ALIAS FID
 *DATA TYPE OID
 *WIDTH 4
 *PRECISION 0
 *SCALE 0
 *FIELD DESCRIPTION
 Internal feature number.

 *DESCRIPTION SOURCE
 ESRI

 *DESCRIPTION OF VALUES
 Sequential unique whole numbers that are automatically generated.

Hide Field FID ▲

FIELD Shape ▶
 *ALIAS Shape
 *DATA TYPE Geometry
 *WIDTH 0
 *PRECISION 0
 *SCALE 0
 *FIELD DESCRIPTION
 Feature geometry.

 *DESCRIPTION SOURCE
 ESRI

 *DESCRIPTION OF VALUES
 Coordinates defining the features.

Hide Field Shape ▲

FIELD STATIC_E ▶
 *ALIAS Static_e
 *DATA TYPE SmallInteger
 *WIDTH 4
 *PRECISION 4
 *SCALE 0
 FIELD DESCRIPTION
 Potentiometric surface in feet

 DESCRIPTION SOURCE
 IDNR

Hide Field STATIC_E ▲

Hide Details for object UNC_PSM_Carroll_Co_IN ▲

[Hide Fields ▲](#)

Metadata Details ►

* METADATA LANGUAGE English (UNITED STATES)
METADATA CHARACTER SET utf8 - 8 bit UCS Transfer Format

SCOPE OF THE DATA DESCRIBED BY THE METADATA *dataset
SCOPE NAME *dataset

* LAST UPDATE 2014-03-06

ARCGIS METADATA PROPERTIES

METADATA FORMAT ArcGIS 1.0
METADATA STYLE FGDC CSDGM Metadata
STANDARD OR PROFILE USED TO EDIT METADATA FGDC

CREATED IN ARCGIS FOR THE ITEM 2014-02-25 08:10:44
LAST MODIFIED IN ARCGIS FOR THE ITEM 2014-03-06 10:52:59

AUTOMATIC UPDATES

HAVE BEEN PERFORMED Yes
LAST UPDATE 2014-03-06 10:52:59

ITEM LOCATION HISTORY

ITEM COPIED OR MOVED 2014-02-26 08:04:58
FROM R:\RA_FILES_ONLINE\34_Carroll\UNC_PSM_Carroll_Co_IN
To
\\iotfilp19pw\dnr\dow\common\RA_FILES_ONLINE\34_Carroll\34_Carroll_County_PSM_shapefiles\UNC_PSM_Carroll_Co_IN

[Hide Metadata Details ▲](#)

Metadata Contacts ►

METADATA CONTACT

INDIVIDUAL'S NAME Glenn E. Grove
ORGANIZATION'S NAME Indiana Department of Natural Resources, Division of Water
CONTACT'S POSITION Resource Assessment Section
CONTACT'S ROLE point of contact

CONTACT INFORMATION ►

PHONE
VOICE 317-232-4160
FAX 317-233-4579

ADDRESS

TYPE both
DELIVERY POINT 402 W. Washington Street W264
CITY Indianapolis
ADMINISTRATIVE AREA Indiana
POSTAL CODE 46204
COUNTRY UNITED STATES
E-MAIL ADDRESS ggrove@dnr.IN.gov

HOURS OF SERVICE

8:15am - 4:15pm M-F except Government Holidays

[Hide Contact information ▲](#)

[Hide Metadata Contacts ▲](#)

Metadata Maintenance ►

MAINTENANCE

UPDATE FREQUENCY not planned

Hide Metadata Maintenance ▲

Metadata Constraints ►

LEGAL CONSTRAINTS

ACCESS CONSTRAINTS other restrictions

OTHER CONSTRAINTS

Access constraints: This metadata file is intended to accompany the subject geospatial set. This file may be updated, and the most recent version is available by contacting the IDNR Division of Water.

Hide Metadata Constraints ▲

FGDC Metadata (read-only) ▼