
2023 In-Person Dove Draw Information Patoka Lake

This page includes information and instructions for those interested or selected to participate in a 2023 In-Person Dove Draw at Patoka Lake. It is important to note that other properties/areas participating in draws or reserve hunts are managed by various agencies and may have unique restrictions that each hunter must follow. Please read each area's information packet carefully before pursuing a hunt.

Hunt Information:

The first two days of dove season at Patoka Lake are by in-person drawing only.

- Friday, Sept. 1, 2023
- Saturday, Sept. 2, 2023

You must obtain a valid hunting license, Game Bird Habitat stamp, and HIP number prior to the drawing. The drawing will occur at the Patoka Lake Archery Range Shelterhouse at 6:00 a.m. ET (5:00 a.m. CT) on the days previously mentioned. Each of the dove fields at Patoka Lake will be marked with evenly spaced and numbered stakes. Hunters who are drawn may pick their preferred stake in order of their given draw number (i.e., first person drawn will have option to select any stake). Hunters may bring a hunting partner with you during your hunt. You and your hunting partner will draw a single hunting stake and sit together. No more than two guns will be allowed per stake.

You must carry with you and return the one-day access permit received upon drawing your selected stake position. Each permit has an area to indicate your harvest records and additional information. Please fill your permits to the best of your ability. Permits can be returned at the property office or at any self-service kiosk around the property.

Hunters must stop hunting by 1 p.m. ET and be out of the field by 2 p.m. ET Sept. 1-2.

Restrictions:

- Non-toxic shot is required at Patoka Lake for all migratory bird hunting, including dove hunting.
- The shotgun used must not be capable of holding more than three shells, unless it is plugged with a one-piece filler that cannot be removed without disassembling the firearm.
- All dove hunters are limited to a maximum of 50 shells per hunter.
- All trash should be removed from the field after the hunt. Spent hulls are considered trash.
- No alcoholic beverages or other illegal substances are allowed in the fields.
- Do not shoot up, down, or behind the length of shooting strips. Only shoot over mowed flowers.

Bag Limit:

- The daily bag limit is 15 mourning doves. The possession limit is 45 mourning doves.

Hunting Hours:

- Shooting hours for dove are 6:50 a.m. until 1 p.m. ET on Sept. 1-2.
- Beginning Sept 3., shooting hours are one half-hour before sunrise to sunset.

Area Information:

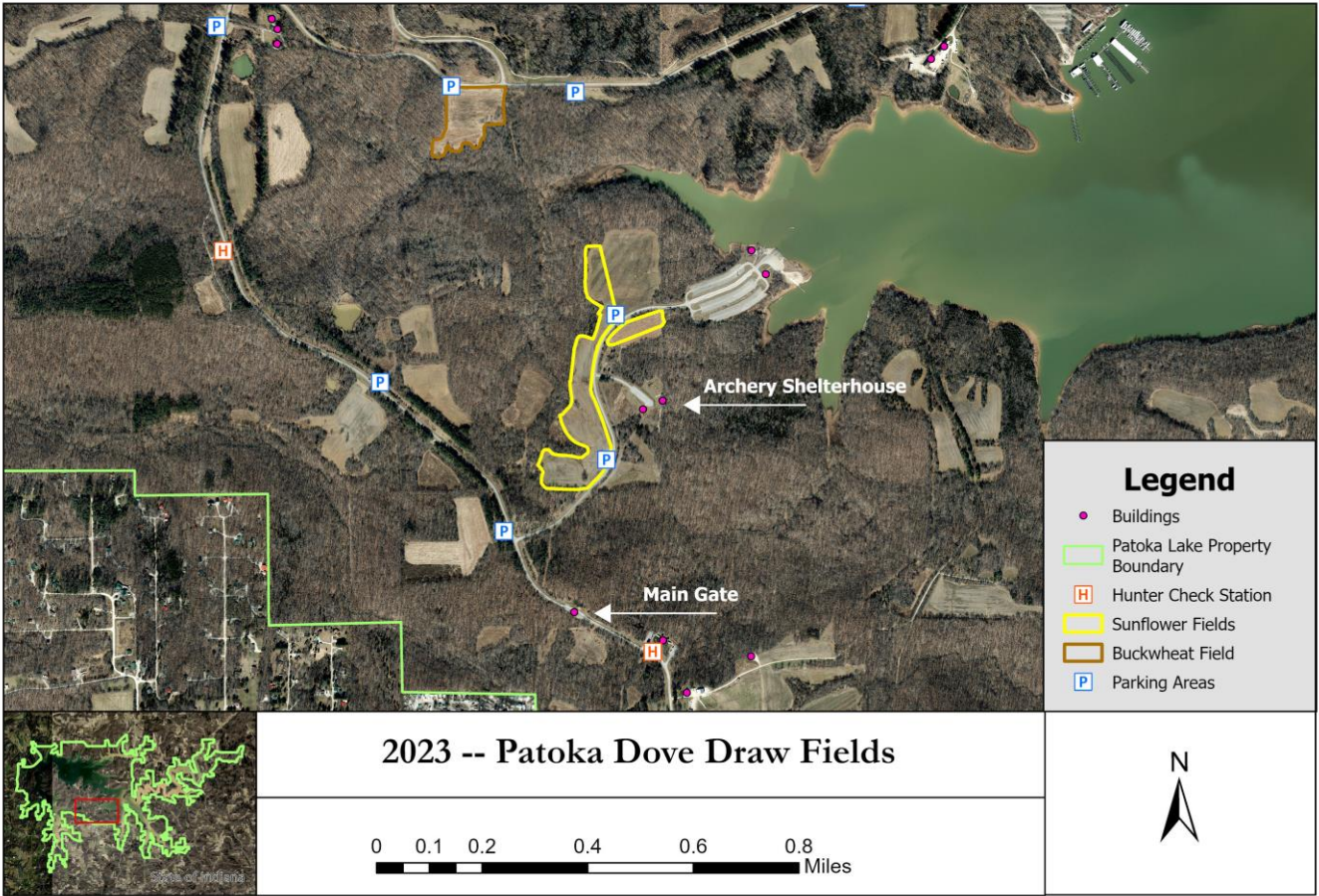
Patoka Lake is located approximately twenty miles east of Jasper, Indiana and provides quality outdoor recreation opportunities for multiple user groups including anglers, hunters, and wildlife viewers. The 26,000-acre property is comprised predominantly of upland forest habitat with interspersed grassland openings in upland and lowland areas. Each year, hunters successfully harvest several species including deer, turkey, waterfowl, squirrel, and rabbit.

The property manages several dove fields each year and offers in-person drawings for staked positions in the fields typically during the first two days of the season. Most of our dove fields can be accessed by a brief walk and all fields will have parking nearby. Staff always attempt to leave standing cover near each stake for hunter concealment. The dove fields will differ in quality and size each year given the many factors that may affect the outcome of sunflower plantings.

Accurate field maps will be posted to the property webpage when we can determine the success of each field. Maps can be found here around one month before season opens: [Patoka Lake](#).

The first two days of dove season are very popular at Patoka Lake, so we ask that each sportsman do their part to keep litter contained and showcase ethical hunting to help preserve our natural resources for generations to come. If you have questions about property rules, accessing dove fields, or other specifics, please call or visit the main office.

Contact: If you have further questions, please contact the Patoka Lake property office at 812-338-5589
Address: 3084 N Dillard Road Birdseye, IN, 47513



Legend

- Buildings
- ▭ Patoka Lake Property Boundary
- H Hunter Check Station
- ▭ Sunflower Fields
- ▭ Buckwheat Field
- P Parking Areas

2023 -- Patoka Dove Draw Fields

