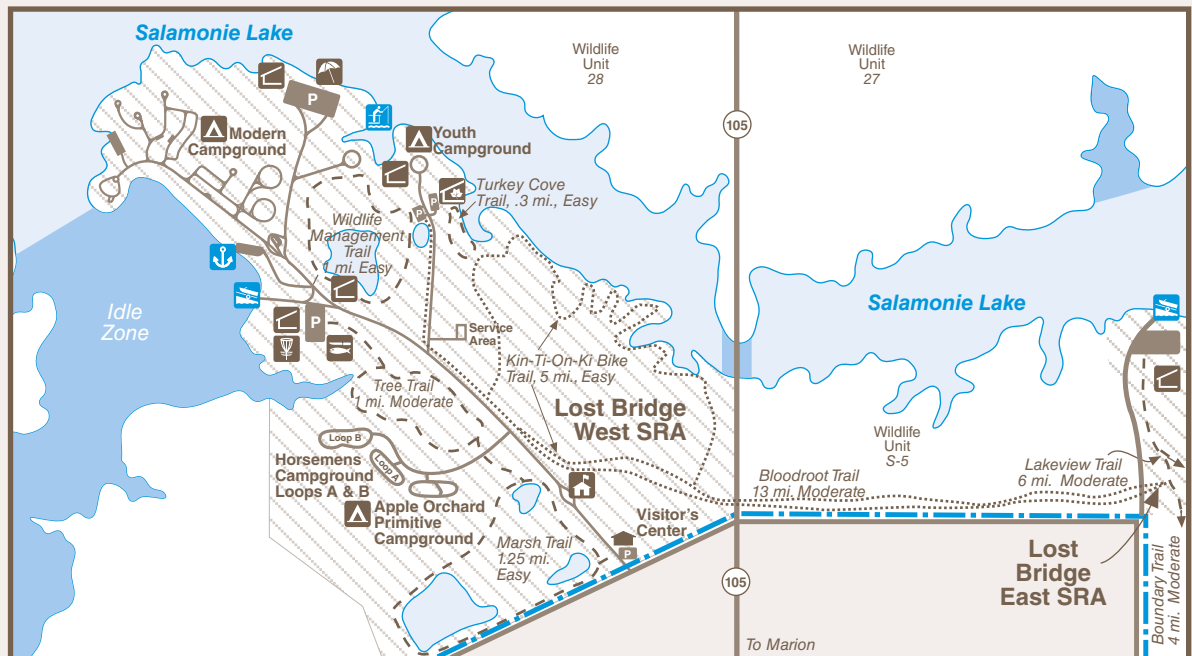
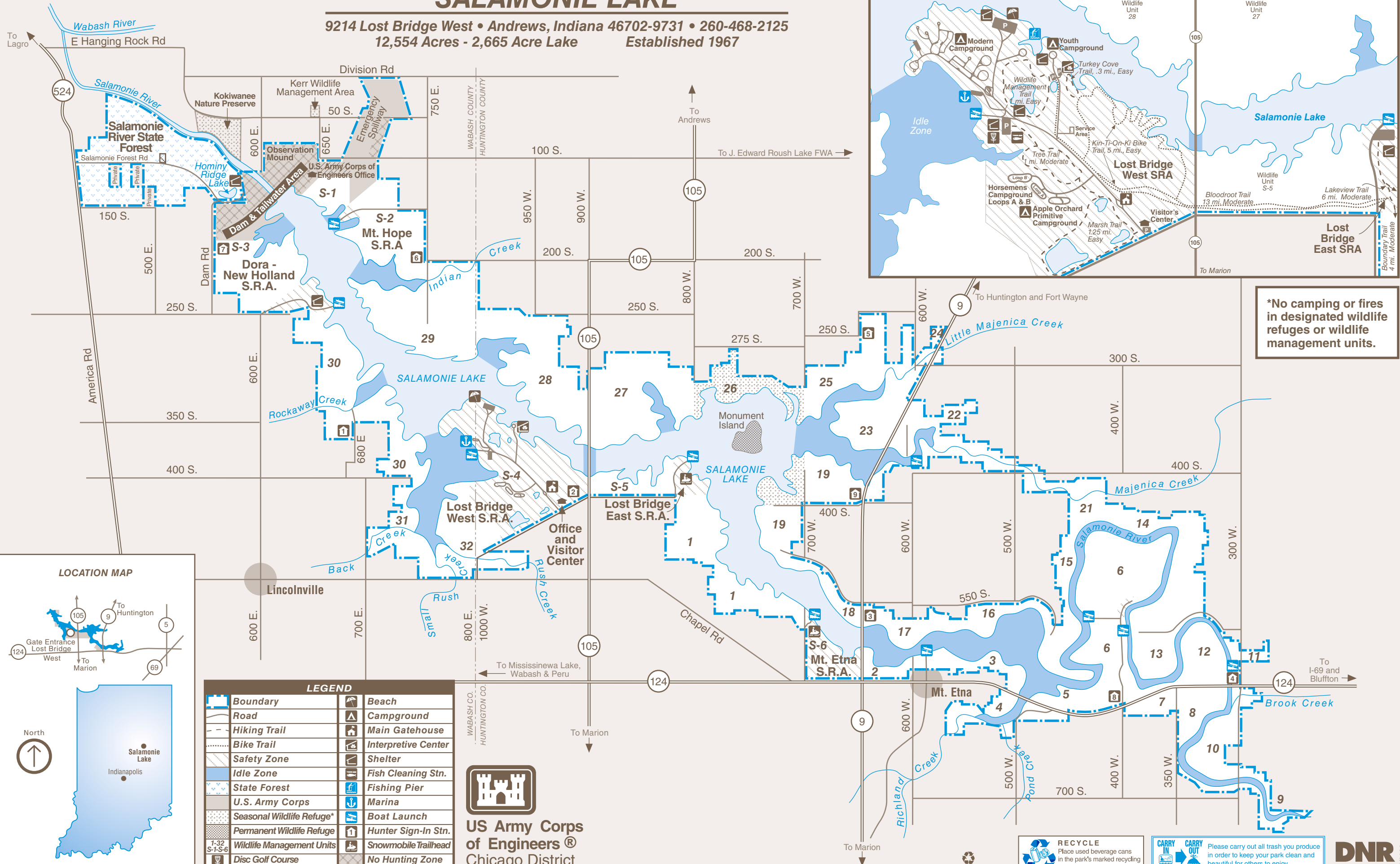
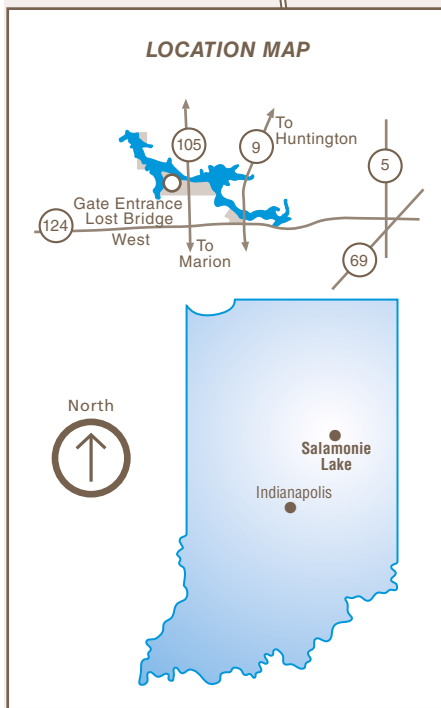


SALAMONIE LAKE

9214 Lost Bridge West • Andrews, Indiana 46702-9731 • 260-468-2125
12,554 Acres - 2,665 Acre Lake
Established 1967



***No camping or fires in designated wildlife refuges or wildlife management units.**



LEGEND			
	Boundary		Beach
	Road		Campground
	Hiking Trail		Main Gatehouse
	Bike Trail		Interpretive Center
	Safety Zone		Shelter
	Idle Zone		Fish Cleaning Stn.
	State Forest		Fishing Pier
	U.S. Army Corps		Marina
	Seasonal Wildlife Refuge*		Boat Launch
	Permanent Wildlife Refuge		Hunter Sign-In Stn.
	Wildlife Management Units		Snowmobile Trailhead
	Disc Golf Course		No Hunting Zone

US Army Corps of Engineers®
Chicago District

RECYCLE
Place used beverage cans in the park's marked recycling containers. Thank you.

CARRY IN CARRY OUT
Please carry out all trash you produce in order to keep your park clean and beautiful for others to enjoy.

DNR
Indiana Department of Natural Resources

Printed on Recycled Paper

LOCATION

Salamonie Lake is located in Huntington and Wabash counties in northeastern Indiana on the Salamonie River. Accessible from the following routes: State Road 524 on the west, U.S. 24 on the north, Interstate 69 on the east, and S.R. 124 on the south. S.R. 9 and S.R. 105 also cross the property north/south.

PURPOSE

As the second largest reservoir of the Upper Wabash Reservoirs, the U.S. Army Corps of Engineers regulates the water level and operates the dam for flood control. The DNR manages the multiple-use recreation and wildlife areas. This reservoir, along with Mississinewa to the west, and J. Edward Roush to the east, serves to reduce flood stages downstream. The three dams have saved millions of dollars in flood damages.

PARTNERSHIPS

The Corps of Engineers has developed a partnership in the management of the public land at Salamonie Lake. Under a lease agreement, the Indiana Department of Natural Resources operates and maintains the recreation facilities and wildlife areas at the lake, except the areas noted on the map.

LODGING

Local lodging is available if you do not want to camp.

Huntington County Visitor & Convention Bureau

260-359-8687
info@visithuntington.org

Wabash County Convention & Visitor Bureau

1-800-563-1169 or 260-563-7171

DNR PROPERTIES NEARBY

Pick up an Indiana Recreation Guide for more information.

- **Salamonie River State Forest**—boating, boat ramps, bridle trails, camping, fishing, hiking trails, historic features, hunting, picnic area, play/sports area, shelter house, wildlife watching, trapping
- **J. Edward Roush Fish & Wildlife Area**—Boating, boat ramp, fishing, hunting, camping, wildlife watching, shooting range
- **Mississinewa Lake**—Boating, boat ramps, cabins, camping, fishing, fishing pier, hiking trails, hunting, seasonal interpretive service, marina, picnic area, swimming beach, youth tent areas, trapping

ACTIVITIES AND FACILITIES

BEACH—Located in Lost Bridge West, it is the only designated swimming area on the property.

- Open Memorial Day through Labor Day
- No alcohol allowed
- Beach closed when flooded
- Portable toilets and vending

BOAT RAMPS—Concrete ramps at five locations. All embayments are idle zones.

• Canoe launching ramp at S.R. 124 and C.R. 300W, behind check-in station on the river and Lost Bridge West Youth Tent Area 7.

MARINA— Located in Lost Bridge West, in an idle zone off the modern campground. A private concession that provides:

- boat rental
- fuel
- concessions
- firewood
- overnight and seasonal mooring
- tour boat

CAMPING—Only in designated areas. For questions regarding camping at Salamonie River State Forest, please contact the state forest office.

- Electric, Lost Bridge West
- Primitive, Lost Bridge West, Apple Orchard
- Primitive—horse camp, Lost Bridge West, must have horses
- Primitive—youth group, Lost Bridge West

FISHING—Plenty of fishing in lake, river and ponds.

- bluegill
- crappie
- catfish
- redear
- walleye
- bass

HUNTING—All hunters are required by law to carry and return a hunting permit card to one of seven hunter sign-in stations. Refer to sign-in station for property specific regulations. Salamonie has a permanent and seasonal refuge. Game available includes: rabbit, raccoon, squirrel, deer, woodcock, waterfowl, dove, turkey, fox, rail, snipe and coyote.

INTERPRETIVE, CULTURAL and RECREATIONAL PROGRAMS—Interpretive center, raptor center, wildlife viewing windows and surrounding trails Schedules are at InterpretiveServices.IN.gov or call 260-468-2127.

PICNIC AREAS—Located throughout the property in safety zones. Most provide picnic tables, grills, shelterhouses, toilet facilities and accessible picnic tables. Reserve shelters through the Central Reservation System.

ACTIVITIES—beach activities, basketball and volleyball courts, horseshoe pits, disc golf, playgrounds and wildlife viewing areas, hiking trails, and biking trails.

RULES AND REGULATIONS

- A person must not conduct or participate in a fishing tournament on a reservoir property administered by the division of state parks, except under a license.
- A person must not launch, dock, or moor a watercraft or another floating device, except for approved periods and at sites designated by the department for those purposes. A watercraft shall not be left unattended in a courtesy dock.
- Any firearm, including a handgun, BB gun, air gun, CO2 gun, bow and arrow, or paint gun must be unloaded or un-nocked and stored in a case or locked in a vehicle except in accordance with the terms of a one-day hunting permit and record card obtained from a hunter sign-in station and possessed by the person in the field for a specified date.
- A person who possesses a pet must keep the animal caged or on a leash no more than six feet and attended at all times.
- There shall be no vending or advertising without permission of the Department of Natural Resources.
- Camping is permitted only in the campground. Youth groups must be under adult supervision.
- Fires shall be built only in places provided.
- Please comply with the Carry In/Carry Out trash policy in all day use areas. Overnight guests must put waste in receptacles provided for that purpose.
- Motorists will observe speed limits as posted, and park in designated areas. 30 m.p.h. maximum.
- A person must not possess or consume an alcoholic beverage at a swimming beach.
- Drinking water should be taken only from pumps, hydrants or fountains provided for that purpose. This water is tested regularly for purity.
- Report lost or found articles to the property office.
- Feeding of wildlife is prohibited.
- Use of metal detectors is allowed only at the beach. A permit is required.

For a complete list of rules and regulations inquire at property office.

THIS IS YOUR LAKE

All visitors are expected to observe the following rules which are designed to fulfill the purposes for which the state operates lake properties, namely, to manage these areas for the enhancement of wildlife and for the use and enjoyment of the people.

Please let wild animals remain wild.

Feeding wildlife is prohibited. Feeding of wild animals can result in harm to both animals and people. Animals who depend on handouts become a nuisance to visitors and a danger to themselves. Please lock up all food and coolers inside cars or campers. Roll up car windows tightly.

CENTRAL RESERVATION SYSTEM



Reservations for all types of camping, family cabins, and shelters at state parks, reservoirs and forests can be made online or by calling toll-free.
Call: 1-866-6campIN (1-866-622-6746)
Online: camp.IN.gov

Reservations for the Indiana State Park Inns and Inn-operated cabins can be made online or by phone.
Call: 1-877-lodges1 (1-877-563-4371)
Online: IndianalInns.com

FOR MORE INFORMATION



Write: Salamonie Lake
9214 Lost Bridge West
Andrews, IN 46702-9731
Call: 260-468-2125 Ext. 2
Fax: 260-468-2583
Online: on.IN.gov/salamonielake

U.S. ARMY CORPS OF ENGINEERS

PARK MANAGER

Write: U.S. Army Corps of Engineers
6420 E. Salamonie Dam Road
Lagro, IN 46941-9717
Call: 260-782-2358
Fax: 260-782-2474
Online: www.lrc.usace.army.mil/Locations/Lakes/Salamonie-Lake/

CHICAGO DISTRICT HEADQUARTERS

Write: U.S. Army Corps of Engineers
231 S. LaSalle St., Suite 1500
Chicago, Illinois 60604
Call: 312-846-5330

SPECIAL NOTE

Receipts from admission and service charges are used to help defray the operation and maintenance costs of the lake. List of fees available in the main office.



Please carry out all trash you produce in order to keep your park clean and beautiful for others to enjoy!

@INDnrstateparks andreservoirs @indianadnr @INDNRstateparks

See everything Indiana State Parks has to offer at stateparks.IN.gov.

OUTDOOR INDIANA Subscribe to Outdoor Indiana magazine today, Visit OutdoorIndiana.org or call 317-233-3046.

The programs, services, facilities, and activities of the Indiana Department of Natural Resources are available to everyone. DNR prohibits discrimination on the basis of race, color, national origin, age, sex, or disability. If you believe that you have been discriminated against in any program, activity, or facility as described above, or if you desire further information please write to: Department of Natural Resources, Executive Office, 402 W. Washington Street, W256, Indianapolis, IN 46204, (317) 232-4020.

DESCRIPTION OF HIKING TRAILS

TRAIL & DESCRIPTION	DISTANCE	DIFFICULTY
Tree Trail	1.25 miles	Moderate

Bloodroot Trail	13 miles	Moderate
------------------------	----------	----------

The Bloodroot Trail is both a hiking and biking trail.

Marsh Trail	1.5 miles	Easy
--------------------	-----------	------

Turkey Cove Trail	.4 miles	Easy
--------------------------	----------	------

Wildlife Management Trail	1 mile	Easy
----------------------------------	--------	------

DESCRIPTION OF RECREATION TRAILS

TRAIL & DESCRIPTION	DISTANCE	DIFFICULTY
Cross-Country Ski Trail	Varies	Easy to Moderate

Bridle Trail	12 miles	
---------------------	----------	--

Trail to be followed in one direction only

Snowmobile Trail	40 miles	
-------------------------	----------	--

Kin-Ti-On-Ki Bike Trail	5 miles	Easy
--------------------------------	---------	------

PLEASE STAY ON MARKED TRAILS.

TRAILS NOTE

Trails provide enjoyment throughout the year. If you seek adventure and challenge, or recreation and relaxation, one of our trails is for you. All trails are signed and groomed according to their suggested use. Trails wind in and out of woods and clearings, following pond perimeters and the reservoir boundary. Please observe and abide by trail directional signs. Hikers, horsemen, mushroom hunters, and other patrons are urged to wear hunter orange during hunting seasons.

DAM INFORMATION

Type: Earth fill
Maximum height: 133 feet
Length: 6,100 feet
Drainage area above dam: 553 square miles

OPERATING LEVELS

	ELEVATION (feet mean sea level)	AREA (acres)	LENGTH (miles)
Winter Pool	730	868	11
Summer Pool	755	2,665	17
Flood Pool	793	9,340	30

DNR Indiana Department of Natural Resources

INDIANA

on.IN.gov/stateparks



Salamonie Lake comprises a total of 12,554 acres, including the 2,665 acre reservoir. The property is operated and maintained by the Indiana Department of Natural Resources, under a lease agreement with the U.S. Army Corps of Engineers. At summer pool the water forms a 2,665-acre lake. The property also boasts 40 ponds, marshes, and wetlands. Surrounded by the rich countryside of north-central Indiana, Salamonie Lake and the surrounding area have a lot to offer those seeking information on Indiana's pioneer history. Learn about towns under water, Indiana legends and more. Explore Kokiwanee and Hanging Rock nature preserves. Roam the Salamonie River State Forest, the largest state forest in northern Indiana. Visit the historic towns of Huntington and Wabash, which are only a short drive from Salamonie.