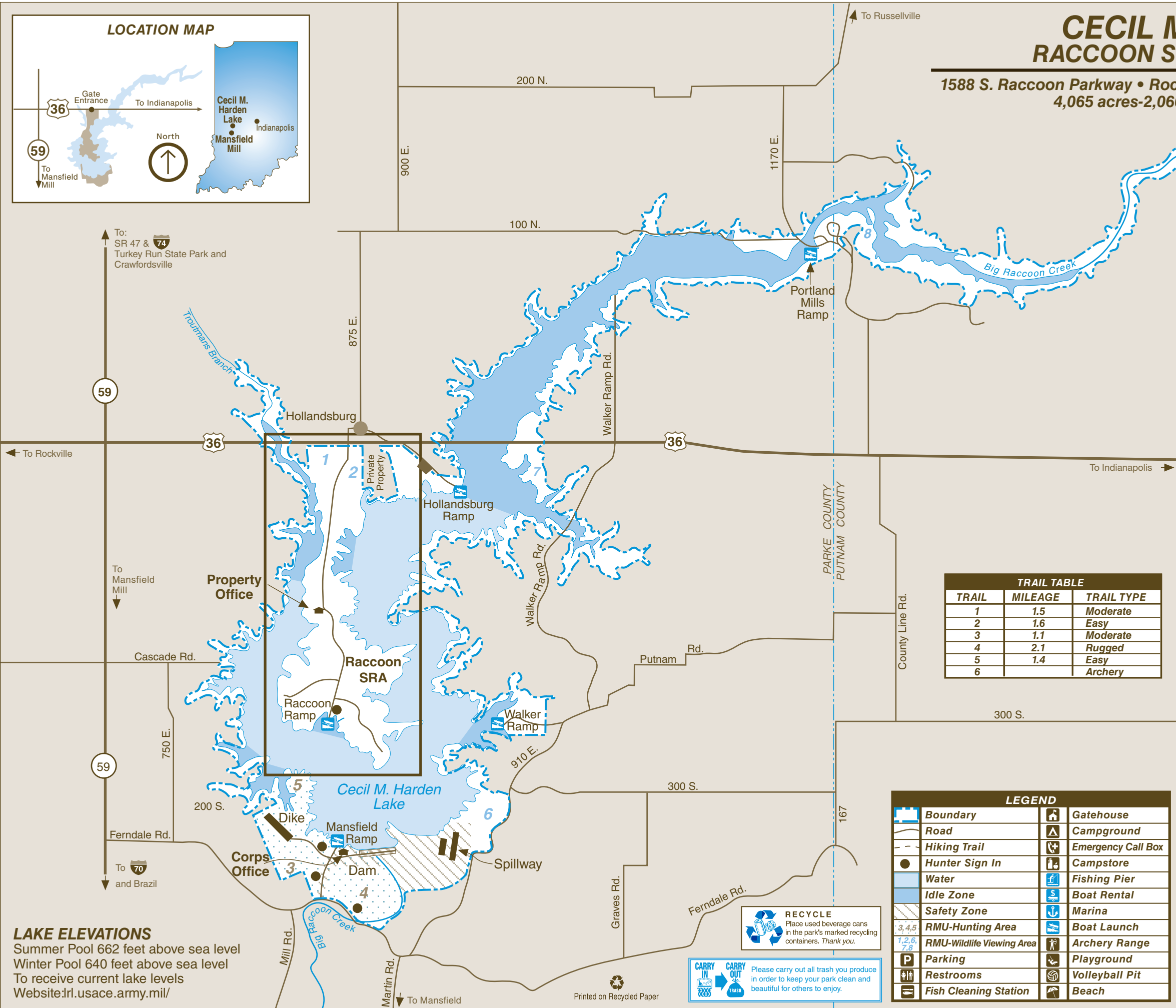


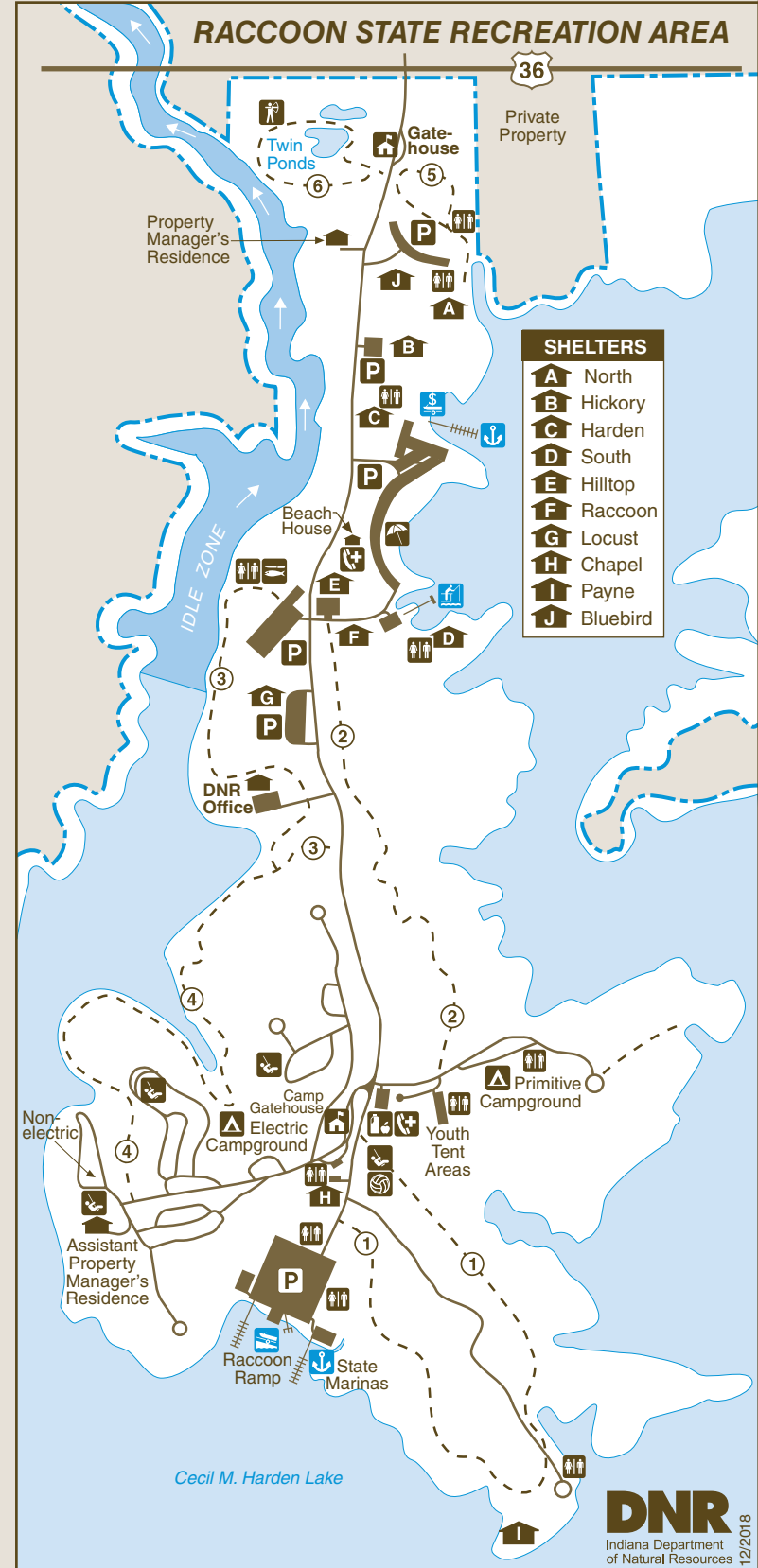
CECIL M. HARDEN LAKE RACCOON STATE RECREATION AREA

1588 S. Raccoon Parkway • Rockville, IN 47872 • 765-344-1412 • FAX 317-972-3113
4,065 acres-2,060-acre lake Established 1960



TRAIL TABLE		
TRAIL	MILEAGE	TRAIL TYPE
1	1.5	Moderate
2	1.6	Easy
3	1.1	Moderate
4	2.1	Rugged
5	1.4	Easy
6		Archery

LEGEND			
	Boundary		Gatehouse
	Road		Campground
	Hiking Trail		Emergency Call Box
	Hunter Sign In		Campstore
	Water		Fishing Pier
	Idle Zone		Boat Rental
	Safety Zone		Marina
	RMU-Hunting Area		Boat Launch
	RMU-Wildlife Viewing Area		Archery Range
	Parking		Playground
	Restrooms		Volleyball Pit
	Fish Cleaning Station		Beach



SHELTERS	
A	North
B	Hickory
C	Harden
D	South
E	Hilltop
F	Raccoon
G	Locust
H	Chapel
I	Payne
J	Bluebird

LAKE ELEVATIONS
Summer Pool 662 feet above sea level
Winter Pool 640 feet above sea level
To receive current lake levels
Website: rl.usace.army.mil/

RECYCLE
Place used beverage cans in the park's marked recycling containers. Thank you.

CARRY IN CARRY OUT
Please carry out all trash you produce in order to keep your park clean and beautiful for others to enjoy.

Printed on Recycled Paper

Cecil M. Harden Lake, formerly Mansfield Lake, was designed and built by the Louisville District of the U.S. Army Corps of Engineers. The lake serves as a unit of the Comprehensive Plan for the Ohio River Basin to effect reduction in flood stages downstream from the dam, primarily in the Big Raccoon Creek and Lower Wabash River watersheds. Existence of the lake creates the potential for water-related recreation and provides for the enhancement of fish and wildlife.

The lake was authorized by the Flood Control Act approved June 28, 1938. Construction began in October 1956. The project became operational in July 1960.

The lake was renamed from Mansfield Lake by a bill signed into law on Dec. 14, 1974, by President Gerald R. Ford, in recognition of Mrs. Cecil Murray Harden for her role in obtaining funds for the project. She had long been recognized as one of the most active members of the community, serving in positions on the local, state and national levels. She was the U.S. Congressional Representative for the area for five terms, beginning in 1949.

AREA HISTORY AND FEATURES

Cecil M. Harden Lake is located on Big Raccoon Creek in the rolling farmland of Parke County. Named for Benjamin Parke, the first judge of the U.S. District Court in Indiana, Parke County was officially organized on Jan. 9, 1821. As with most of southern Indiana, Parke County was inhabited by several Native American tribes, primarily the Delaware, Shawnee and Miami. The Native Americans lost the area after signing the "10 O'clock Treaty" in 1809 and the Treaty of St. Marys in 1818. By 1840, the settlement of Parke County was complete. The Native Americans gave the name "Pun-go-so-co-nee" to the largest stream in Parke County, meaning "Stream of Many Sugar Trees." Early settlers translated that as Sugar Creek and followed the Native Americans in collecting sugar water from the trees each spring. They boiled down the water to syrup or granulated sugar for use as a sweetener during the rest of the year. Today, several active sugar camps still operate in the hard maple groves in Parke County. Equipment has been modernized, but the technique and spirit is the same as that of the pioneers more than 150 years ago.

Parke County is similar to much of southern Indiana, with its rich rolling farmland, mineral reserves, coal, natural gas and valuable forests of oak, walnut, maple and hickory. Residents also treasure the unique link to the past as the "Covered Bridge Capital of America." A total of 31 covered bridges dot the countryside of Parke County, more than any other county in the United States. Because of covered bridges' regional popularity, two master covered-bridge builders, J.J. Daniels and J.A. Brittin, lived in Rockville, the county seat. The remaining 31 bridges were built between 1865 and 1921. The oldest bridges still carry traffic.

PURPOSE AND PROJECT HISTORY

Cecil M. Harden Lake, formerly Mansfield Lake, was designed and built by the Louisville District of the U.S. Army Corps of Engineers. The lake serves as a unit of the Comprehensive Plan for the Ohio River Basin to effect reduction in flood stages downstream from the dam, primarily in the Big Raccoon Creek and Lower Wabash River watersheds. Existence of the lake creates the potential for water-related recreation and provides for the enhancement of fish and wildlife.

The lake was authorized by the Flood Control Act approved June 28, 1938. Construction began in October 1956. The project became operational in July 1960.

The lake was renamed from Mansfield Lake by a bill signed into law on Dec. 14, 1974, by President Gerald R. Ford, in recognition of Mrs. Cecil Murray Harden for her role in obtaining funds for the project. She had long been recognized as one of the most active members of the community, serving in positions on the local, state and national levels. She was the U.S. Congressional Representative for the area for five terms, beginning in 1949.

DNR Indiana Department of Natural Resources



stateparks.IN.gov

Located on U.S. 36 in Parke and Putnam counties in west-central Indiana, Cecil M. Harden Lake is 50 miles west of Indianapolis and 35 miles northeast of Terre Haute. It was constructed by the U.S. Army Corps of Engineers and opened in 1960. The property is operated and maintained by the Indiana Department of Natural Resources, under a lease arrangement with the U.S. Army Corps of Engineers. The main functions of Cecil M. Harden Lake are to control flooding and to provide recreation and resource management. The property is composed of 2,005 acres of land with a 2,060-acre lake.

Surrounded by numerous species of trees, Cecil M. Harden Lake is a naturalists' delight. Wildflowers, berries, nuts and mushrooms grace the wooded areas of this property. Minutes away lies the site of the Parke County Covered Bridge Festival, which draws thousands of visitors every October.

Please let wild animals remain wild. Feeding of wild animals can result in harm to both animals and people. Animals who depend on handouts become a nuisance to visitors and a danger to themselves. Please lock up all food and coolers inside cars or campers. Roll up car windows tightly.

Visitors shall observe the rules, which are designed to fulfill the purposes for which the state operates reservoir properties, namely, to manage these areas for the enhancement of wildlife and for the public's use and enjoyment.

THIS IS YOUR LAKE

For a complete list of rules and regulations, inquire at property office.

- Use of metal detectors is prohibited.
- Feeding of wildlife is prohibited.
- Report lost or found articles to the property office.
- Water is tested regularly for purity.
- Hydrants or fountains provided for that purpose. This drinking water should be taken only from pumps.
- No person shall possess or consume an alcoholic beverage at a swimming beach.
- Motorists shall observe posted speed limits and park only in designated areas (30 mph maximum).
- Recreators shall observe posted speed limits and park only in designated areas (30 mph maximum).
- Recreators shall observe posted speed limits and park only in designated areas (30 mph maximum).
- Comply with the Carry In/Carry Out trash policy in all day-use areas. Overnight guests must put waste in receptacles provided for that purpose.
- Fires shall be built only in designated places.
- Groups must be under adult supervision.
- Camping is permitted only in the campground. Youth is prohibited.
- Vending or advertising without permission of the DNR is prohibited.
- A person who possesses a pet must attend it at all times and keep the animal caged or on a leash no more than 6 feet long.
- No person shall launch, dock, or moor a watercraft or other floating device, except for approved periods and at sites designated by the department for those purposes. No person shall leave watercraft unattended in a courtesy dock.
- Any firearm, BB gun, air gun, CO2 gun, bow and arrow or paint gun must be unloaded or un-nocked and stored in a case or locked within a vehicle except in accordance with the terms of a one-day hunting permit and record card obtained from a hunter sign-in station and possessed by the person in the field for a specified date.
- No person shall conduct or participate in a fishing tournament on a reservoir property administered by the Division of State Parks, except under a license.

RULES AND REGULATIONS

CENTRAL RESERVATION SYSTEM



Reservations for all types of camping, family cabins, and shelters at state parks, reservoirs and forests can be made online or by calling toll-free. Call: **1-866-6campIN** (1-866-622-6746) Online: **camp.IN.gov**

Reservations for the Indiana State Park Inns and Inn-operated cabins can be made online or by phone. Call: **1-877-lodges1** (1-877-563-4371) Online: **IndianalInns.com**

FOR MORE INFORMATION



Write: Cecil M. Harden Lake
Raccoon State Recreation Area
1588 S. Raccoon Parkway
Rockville, IN 47872

Call: 765-344-1412 or 765-344-1884
Fax: 317-972-3113
Online: on.IN.gov/raccoonsra

SPECIAL NOTE

Receipts from admission and service charges are used to help defray the operation and maintenance costs of the lake. List of fees available in the main office.



Please carry out all trash you produce in order to keep your park clean and beautiful for others to enjoy!

@INDnrstateparks andreservoirs @indianadnr @INDNRstateparks

See everything Indiana State Parks has to offer at stateparks.IN.gov.

OUTDOOR INDIANA Subscribe to Outdoor Indiana magazine today, Visit OutdoorIndiana.org or call 317-233-3046.

The programs, services, facilities, and activities of the Indiana Department of Natural Resources are available to everyone. DNR prohibits discrimination on the basis of race, color, national origin, age, sex, or disability. If you believe that you have been discriminated against in any program, activity, or facility as described above, or if you desire further information please write to: Department of Natural Resources, Executive Office, 402 W. Washington Street, W256, Indianapolis, IN 46204, (317) 232-4020.

© 11/2018 Indiana Department of Natural Resources

Pick up an Indiana Recreation Guide for more information.

- **Big Walnut-Tall Timbers Trail Nature Preserve**—Hiking trails and parking
- **Shades State Park**—Camping, fishing, hiking trails, seasonal interpretive service, picnic areas, shelter house, youth tent areas, wildlife watching
- **Turkey Run State Park**—Cabins, camping, fishing, hiking trails, historic features, inn & restaurant, interpretive center & service, picnicking, play/sports area, saddle barn, shelterhouse, swimming pool, youth tent

DNR PROPERTIES NEARBY

For a list of park events, visit interpretiveservices.IN.gov

PLEASE STAY ON MARKED TRAILS

*Trails 1-5 closed during high water.
Trail begins at the gatehouse parking lot and leads through the Twin Ponds area. Archery enthusiasts can shoot at stationary targets and from elevated stands along a five-station, real-condition, simulated practice trail. Broadheads and aerial shooting prohibited.

Trail 6-Archery Range Moderate

Starts near the Bluebird shelter, leads through successful vegetation, second-growth timber and a variety of artificial wildlife homes. Trail loops and returns to shelter.

Trail 5 1.4 miles Moderate

Starts near the west edge of the White Tail campground. Hikers will see deep sandstone cliffs and several open views of the lake while on the rugged terrain.

Trail 4 2.1 miles Fugged

Starts on the northern edge of Raccoon Run campground. Trees include maple, oak, poplar and sycamore. Hikers will pass several bank-fishing areas before the trail concludes at the fish-cleaning station.

Trail 3 1.1 miles Moderate

Starts at the main boat ramp and goes around the south shore of the peninsula to the Payne shelter, past the 1800s Payne Cemetery, Miami Vista, She-Qui-Oh Vista ("Lean Raccoon") and three scenic overlooks of the lake. The trail returns hikers to near the campground store.

Trail 2 1.6 miles Easy

Starts at the main boat ramp and goes around the south shore of the peninsula to the Payne shelter, past the 1800s Payne Cemetery, Miami Vista, She-Qui-Oh Vista ("Lean Raccoon") and three scenic overlooks of the lake. The trail returns hikers to near the campground store.

Trail 1 1.5 miles Moderate

Starts at the main boat ramp and goes around the south shore of the peninsula to the Payne shelter, past the 1800s Payne Cemetery, Miami Vista, She-Qui-Oh Vista ("Lean Raccoon") and three scenic overlooks of the lake. The trail returns hikers to near the campground store.

TRAIL & DESCRIPTION DISTANCE DIFFICULTY

DESCRIPTION OF HIKING TRAILS

ACTIVITIES AND FACILITIES

BEACH—Swimming, modern beach house and concessions available Memorial through Labor Days.

BOAT RAMPS—Available at five locations, boat launching ramps are marked on the map. Raccoon ramp open year-round; all other ramps are seasonal. Boat ramps subject to closure during high water.

BOAT RENTAL—Fishing boats, pontoon boats and ski boats are available by the hour or day. Inquire at Boat Rental Office for rates and reservations.

CAMPING—Campsites available are electric, non-electric and primitive. Occupancy limited to 14 consecutive nights. Reservations available through the Central Reservation System.

CONCESSION & CAMPGROUND GROCERY—Open summer months. Wood, ice, picnic supplies and groceries available.

FISHING—Largemouth bass, smallmouth bass, striped bass, bluegill, catfish, crappie, walleye and white bass. Trout fishing available in tailwater area in season. State license required. Available at lake office and online.

HIKING—Easy to rugged marked trails are available for hiking all year.

HISTORIC MANSFIELD ROLLER MILL—Located six miles south of U.S. 36 off S.R. 59 and managed by Raccoon SRA. Staffed during Mill Festivals (Mushroom, Beans and Cornbread, and Covered Bridge festivals). This 3 1/2 story 1880s flour mill contains most of the original equipment and stands as an example of the beginnings of industrial automation in Indiana.

HUNTING—All hunters are required by law to sign in and return a hunting permit card to a hunter sign-in station. Although limited by area, there are some hunting opportunities for waterfowl and upland game.

INTERPRETIVE NATURALIST SERVICE—Explore the world of natural resources while enjoying interpretive and recreational programs. Program schedules are available at InterpretiveServices.IN.gov or by calling 765-344-1412.

PICNIC AREAS/SHELTERS—Picnicking is available in a number of areas, containing tables, grills, toilet facilities and playfield. Accessible picnic sites available. Reservations for shelters available through the Central Reservation System.

YOUTH TENT CAMPING—Offered for organized youth groups under adult supervision in designated areas. Advance reservations required. Reservations available through the Central Reservation System.

RECYCLING—Available. Inquire at the campground gate or office.