

Indiana Department of Natural Resources  
Division of Forestry  
**DRAFT**  
RESOURCE MANAGEMENT GUIDE

**State Forest:** Owen-Putnam

**Forester:** R. Duncan

**Management Cycle End Year:** 2029

**Compartment:** 4    **Tract:** 11

**Date:** October 2014

**Management Cycle Length:** 15 Years

### **Location**

Compartment 4, tract 11 is located primarily in the southeast quarter of section 9, township 11N, range 4W, Jennings townships, Owen county. This tract is an interior parcel of state forest. It is not adjacent to any private property. It is approximately 3 miles east of the unincorporated town of Jordan village.

### **General Description**

This tract is a 90-acre multiple use parcel located in the central portion of the 1440 acres contained in compartment 4 of the Owen-Putnam State Forest. Timber types include primarily closed canopy mixed hardwoods with some oak-hickory, beech-maple and pine. Pine was planted in the 1950's along the access road and ridge top to control erosion from past disturbance. The over-story consists of medium to large sawlog sized yellow-poplar, oak, hickory, maple and beech with white pine comprising the pine stands. The quality of merchantable timber is good. However, there is some decline in the yellow poplar due to drought and insect stress. The pole-sized under-story consists mostly of maple, sassafras, oak, hickory and beech with white pine representing some of the pole sized understory in the pine stand. This area exhibits good opportunities for multiple use management, including timber management, wildlife management, soil and water conservation and public recreational activities, such as, hunting, hiking, gathering, viewing and interpretation.

### **History**

Owen-Putnam State Forest was established in 1948 with most of its landholdings purchased as smaller non-contiguous tracts in the 50's and 60's. The ridge tops in the area of this tract were farmed up until approximately 1930 and then planted to Pine in the 1950s when the state purchased the land. Compartment 4 tract 11 has been managed for many years.

- Timber inventory 2000
- Management guide 2000
- Timber harvest 2000
- Timber stand improvement, vine control 2010
- Timber inventory 2014

### **Landscape Context**

Compartment 4 tract 11 is located in a very rural area. Generally the area is forested hills and ravines. This tract is an interior parcel of state forest. It is not adjacent to any private property. The private property nearby is primarily closed canopy, deciduous, mixed hardwood forests with no agriculture or industry, limited residential housing, small fields/pastures and small ponds located primarily along county roads beyond the state forest.

## Topography, Geology and Hydrology

This part of Owen-Putnam State Forest falls in the Shawnee Hills Natural Region, Crawford Upland Section. The region represents presettlement conditions better than any other region in Indiana. This section is most distinct by its rugged hills with sandstone cliffs and rockhouses. Characteristic soils are the well-drained acidic silt loams of the Wellston-Zanesville-Berks Association. The upper slopes consist of an oak-hickory assortment, with a more mesic component in the coves resembling the mixed mesophytic forest community.

The topography of the area varies from nearly level ground on the ridge top from south to north along the east edge of the tract to moderately steep northwest to southwest facing slopes. Water sheds into ravines that drain into an intermittent stream that flows north to Jordan Creek.

The area is generally comprised of shallow to moderately deep, medium textured, droughty, well to excessively drained soils underlain by sandstone, siltstone and shale, with outcroppings of bedrock, and often containing fragipans on nearly level to steep slopes. These soils occur throughout the Illinoian glaciated areas of the county.

In the event of a harvest, the existing haul road and log yards can be utilized. However, care must be taken during the planning and execution of skid trails due to the erosive nature of some soils. Best Management Practice (BMP) guidelines will be followed to preserve soil and water quality (.

## Soils

The soils of this tract are located on steeper slopes and are often shallow, stony and droughty and therefore not suited for farming and usually considered to be poorly suited for quality timber production. In general the soils are more suited for oak and hickory than poplar.

Specifically the tract is composed of the following soils from most to least abundant:

**TtaG—Tulip-Tipsaw complex**, 25 to 60 percent slopes, *Setting*: Structural benches and scarps underlain with interbedded sandstone, shale, and siltstone, *Position*: Backslopes and footslopes, *Site Index*: Upland oak 80

**ZapD3—Zanesville**, soft bedrock substratum-Tulip silt loams, 12 to 18 percent slopes, severely eroded, *Setting*: Hills underlain with interbedded sandstone, shale, and siltstone, *Position*: Backslopes, *Site Index*: 69-75

**ZamC3—Zanesville silt loam**, soft bedrock substratum, 6 to 12 percent slopes, severely eroded, *Setting*: Hills underlain with interbedded sandstone, shale, and siltstone, *Position*: Shoulders and backslopes, *Site Index*: Upland oak 69-75

**PryB—Potawatomi silt loam**, 1 to 3 percent slopes, *Setting*: Hills underlain with interbedded, sandstone, shale, and siltstone, *Position*: Summits, *Site Index*: Upland oak 80

**PcnA—Patricksburg silt loam**, 0 to 2 percent slopes, *Setting*: Hills underlain with interbedded sandstone, shale, and siltstone, *Position*: Nearly level summits, *Site Index*: 92

**ZamB2—Zanesville silt loam**, soft bedrock substratum, 2 to 6 percent slopes, eroded, *Setting*: Hills underlain with interbedded sandstone, shale, and siltstone, *Position*: Shoulders and summits, *Site Index*: Upland oak 69-75

**HleAV—Holton silt loam**, 0 to 2 percent slopes, frequently flooded, very brief duration, *Setting*: Flood plains, *Position*: Flood-plain steps, *Site Index*: Upland oak 80

## Access

To access the tract from Spencer Indiana, travel west on S.R. 46 approximately 3 miles to Rattlesnake road, continue north on Rattlesnake road approximately 6 miles to Surber road, continue west on Surber road to Rattlesnake campground and the cable gate and fire trail at the back of the campground. Management access as well as public recreational access to this tract is very good via the campground and fire trail.

## **Boundary**

This tract is located in the central portion of the 1440 acres contained in compartment 4. It is interior tract with its boundaries entirely surrounded by state forest. Tract boundaries primarily follow natural geographical and topographical features such as major ravines, ridge tops and streams within the state forest. The tract is bounded to the north by a ravine, to the east by an access road and daylighting area, to the south by a county road and to the west by an intermittent stream.

## **Wildlife**

This tract contains habitat for a variety of wildlife species. Common species or sign observed include Eastern grey squirrel, Eastern fox squirrel, Eastern chipmunks, white-footed mouse, white-tailed deer, Wild Turkey, Virginia opossum, North American raccoon, Eastern box turtle, raptors, songbirds, woodpeckers, toads, frogs and various small stream aquatic life.

Live trees in this tract provide for shelter, escape cover, roosting and as a direct (e.g. mast, foliage) or indirect (e.g. foraging substrate, bugging) food resource, with the oaks, hickories, walnuts and beech providing hard mast for deer, turkey and squirrel and the cherries providing soft mast for birds. The pine stands provide benefits such as cover, roosts and browse.

Live trees containing cavities in this tract provide nesting and denning opportunities for woodpeckers, songbirds and small mammals and potentially contribute to future snags (standing dead trees).

Snags in this tract provide essential habitat characteristics for foraging activity, nest/den sites, decomposers (e.g., fungi and invertebrates), bird perching and bat roosting, and are important contributors to the future pool of downed woody material.

Rotten logs, crater knolls, ephemeral streams and the mapped intermittent stream provide habitat for herptiles and aquatic vertebrates.

The proposed management activities for this tract should not significantly alter the relative proportion and availability of habitat/cover types or significantly disrupt travel/dispersal corridors or create isolated habitat units separated from larger units of similar habitat. Nor should the proposed management activities increase the likelihood that specialist interior forest species would be affected by generalist species using forest edge habitats. Indiana Logging and Forestry Best Management Practices (B.M.P.s) will be followed to conserve soil and water resources and related forest wildlife habitats, such as springs/seeps, ponds/wetlands and karst features.

## **Wildlife Habitat Features**

According to the data collected during the tract inventory (R. Duncan 2014) and represented in the following table, this tract is well represented with habitat in regards to the density, size and species of live and dead trees essential for consideration of various wildlife habitat needs including habitat specialists such as cavity nesters

and species of conservation need like the Indiana bat (*Myotis sodalis*) and their suggested habitat requirements.

Legacy trees, as defined by the Management Guidelines for Compartment-Level Wildlife Habitat Features are well represented above the suggested maintenance levels. White oak and shagbark hickory are two species having preferred characteristics for tree roosting bats. Both tree species are relatively abundant in this tract and will be given consideration as habitat. Also, as the tract continues to mature, the number of legacy trees  $\geq 20''$  D.B.H. is expected to rise.

Standing dead or dying trees (snags) are well represented in this tract, being above the maintenance levels for all classes.

Legacy trees, snags and cavity trees will be given consideration for retention as habitat for the Indiana bat and other wildlife as defined by the Resource Management Strategy for the Indiana Bat on State Forest Property and the Management Guidelines for Compartment-Level Wildlife Habitat Features. In addition, the girdling of select cull trees could be performed through post harvest timber stand improvement (T.S.I.) to address the lack of large diameter snags.

### Wildlife Habitat Feature Tract Summary

	Maintenance Level	Optimal Level	Inventory	Available Above Maintenance
<b>Legacy Trees *</b>				
<b>11"+ DBH</b>	810		2214	1404
<b>20"+ DBH</b>	270		561	291
<b>Snags (all species)</b>				
<b>5"+ DBH</b>	360	630	903	543
<b>9"+ DBH</b>	270	540	413	143
<b>19"+ DBH</b>	45	90	74	

\* **Species Include:** AME, BIH, BLL, COT, GRA, REO, POO, REE, SHH, ZSH, SIM, SUM, WHA, WHO

### Communities

Most of this tract is of the dry-mesic upland forest community type, with some isolated more mesic sites located along lower north slopes, and some floodplain along the streams. The dry-mesic upland forest community has moderate soil moisture with trees growing well, however the canopy is usually more open than in mesic forests. It is one of the most prevalent forest communities in Indiana. It occurs on slopes throughout the state. The dominant plants in this community are the white oak (*Quercus alba*), Northern red oak (*Quercus rubra*) and black oak (*Quercus velutina*). Characteristic plants in this community are the shagbark hickory (*Carya ovata*), mockernut hickory (*Carya tomentosa*), flowering dogwood (*Cornus florida*), hop hornbeam (*Ostrya virginiana*) and black haw (*Viburnum prunifolium*). Characteristic animals in this community are the broad-headed skink (*Eumeces laticeps*), white-footed mouse (*Peromyscus leucopus*) and Eastern chipmunk (*Tamias striatus*) (Jacquart et al. 2002).

A Natural Heritage Database Review is part of the management planning process. If Rare, Threatened or Endangered species were identified for this area, the activities prescribed in this guide will be conducted in a manner that will not threaten the viability of those species.

An exotic/invasive species, multi-flora rose (*Rosa multiflora*), is present in and around this tract in patches of light to moderate densities. It is also common throughout the county. Control measures could be undertaken, possibly during post-harvest T.S.I., to treat problem occurrences before their populations expand.

## **Recreation**

This multiple use tract has good public access via the cable gate and fire trail for compartment 4, located in Rattlesnake campground. It is a good tract for public recreational activities including hunting, hiking, gathering, viewing and interpretation. Because of its nearby parking and walkable fire trail, it is an ideal spot for anyone looking for an accessible outdoor experience.

## **Cultural**

Cultural resources may be present but their location(s) are protected. Adverse impacts to significant cultural resources noted will be avoided during management or construction activities.

## **Tract Description and Silvicultural Prescription**

This tract was not subdivided (non-stratified).

In 1988 a property wide inventory (TIMPIS) was conducted, including Compartment 4 tract 11 (M. Calvert). The results estimated the tract to contain 4045 Bd. Ft. of total sawtimber per acre and 1380 Bd. Ft. of harvest sawtimber per acre, with a stocking level of 69% and a harvest proposed in the year 1999.

In 2000 a routine timber inventory was conducted (R. Duncan). The data estimated the tract to be 100% stocked with 128 Sq. Ft. of total basal area per acre and approximately 8499 Bd. Ft. of total sawtimber per acre and an estimated 2738 Bd. Ft. of harvest sawtimber per acre.

In 2000 the tract was harvested (Crites Logging) of 91,934 Bd. Ft. in 452 trees on 95 acres (2001 Bd. Ft. /Acre) as part of a selective thinning, improvement cut and salvage cut.

In 2009 timber stand improvement, vine control was performed (D. Reynolds) in 90 acres of compartment 4 tract 11.

In 2014 a routine inventory was conducted (R. Duncan). The data estimated the tract to be 89% (fully) stocked with 110 Sq. Ft. of total basal area per acre and approximately 8225 Bd. Ft. of total sawtimber per acre with an estimated 2557 Bd. Ft. of harvest sawtimber per acre and an average tree diameter of 13 inches.

Various timber types can be found on this tract. They are mixed hardwood, oak-hickory, beech-maple and pine. The over-story consists mostly of medium to large sawlog sized yellow-poplar, hickory, maple, oak with Eastern white pine and red pine comprising the pine stands. The quality of merchantable timber is good with the ridge tops and upper slopes containing more of the mixed hardwoods, and the mid to lower slopes containing more of the oak-hickory. The pole-sized under-story consists mostly of hickory, maple, sassafras, beech with white pine and red pine representing some of the pole sized understory in the pine stand. Advanced regeneration is represented mostly by American beech, maple, elm and sassafras.

The current stocking level indicates the tract is fully stocked although not overstocked in response to the harvest in 2000. However, the recommendation is to thin the mature yellow-poplar and harvest the low quality,

damaged, diseased, dying and poorly formed trees, especially the declining yellow-poplar that are competing with the oaks and other quality trees. As with any forest management activities, Best Management Practice (BMP) guidelines will be followed to protect soil and water resources (Forest Practices Working Group, Indiana Woodland Steward Institute). Tract is projected to remain in the fully stocked category after the prescribed elective harvest.

Post harvest timber stand improvement is prescribed to release preferred, high quality crop trees through the culling of low volume, poorly formed trees and less desirable species, and to possibly encourage early to mid successional species regeneration through the creation of canopy gaps and a reduction in understory shade tolerant species (i.e. sugar maple and American beech). T.S.I. would also look at occurrences of multi-flora rose. Standing dead trees (snags) and cavity trees will be given consideration for retention as habitat for wildlife. Legacy trees, as defined by the Resource Management Strategy for the Indiana Bat on State Forest Property, will be given consideration for retention as habitat for the Indiana Bat. In addition, the girdling of select, larger diameter cull trees could be performed through T.S.I. to address the Management Guidelines for Compartment-Level Wildlife Habitat Features.

The overall goal of this silvicultural prescription is to encourage timber growth and quality, and improve species composition, and create favorable growing conditions for early to mid successional timber species, while providing biodiverse forest wildlife habitat.

#### Inventory Summary – C4T11

**Total Number Trees/Acre:** 124  
**Average Site Index:** 80 Oak

**Average Tree Diameter:** 13”  
**Stocking Level:** 89%

	Acres		Sq.Ft./Acre
<b>Hardwood Commercial Forest:</b>	84	<b>Basal Area Sawtimber.</b>	82.5
<b>Pine Commercial Forest:</b>	6	<b>Basal Area Poles:</b>	20.0
<b>Noncommercial Forest:</b>	0	<b>Basal Area Culls:</b>	5.0
<b>Permanent Openings:</b>	0	<b>Sub Merch.</b>	2.5
<b>Other Use:</b>			
<b>Total:</b>	90	<b>Total Basal Area:</b>	110.0

#### Estimated Tract Volumes for Commercial Forest Area – Bd.Ft. Doyle Rule

Species	Harvest Stock	Growing Stock	Total Volume
<b>YEP</b>	1668	592	2259
<b>REO</b>	140	1541	1681
<b>SUM</b>	57	674	731
<b>BLO</b>	58	648	706
<b>WHO</b>	21	680	702
<b>AMB</b>	435	246	681
<b>PIH</b>	48	538	586
<b>SHH</b>	0	183	183
<b>BIH</b>	0	163	163
<b>BLG</b>	0	116	116
<b>BLW</b>	0	107	107
<b>SAS</b>	0	88	88

<b>LAA</b>	39	32	71
<b>WHA</b>	55	0	55
<b>REM</b>	30	12	43
<b>BLC</b>	0	27	27
<b>BAS</b>	26	0	26
<b>Per Acre Total</b>	2577	5647	8225
<b>Tract Total</b>	231,930	508,230	740,250

### Proposed Management Activities

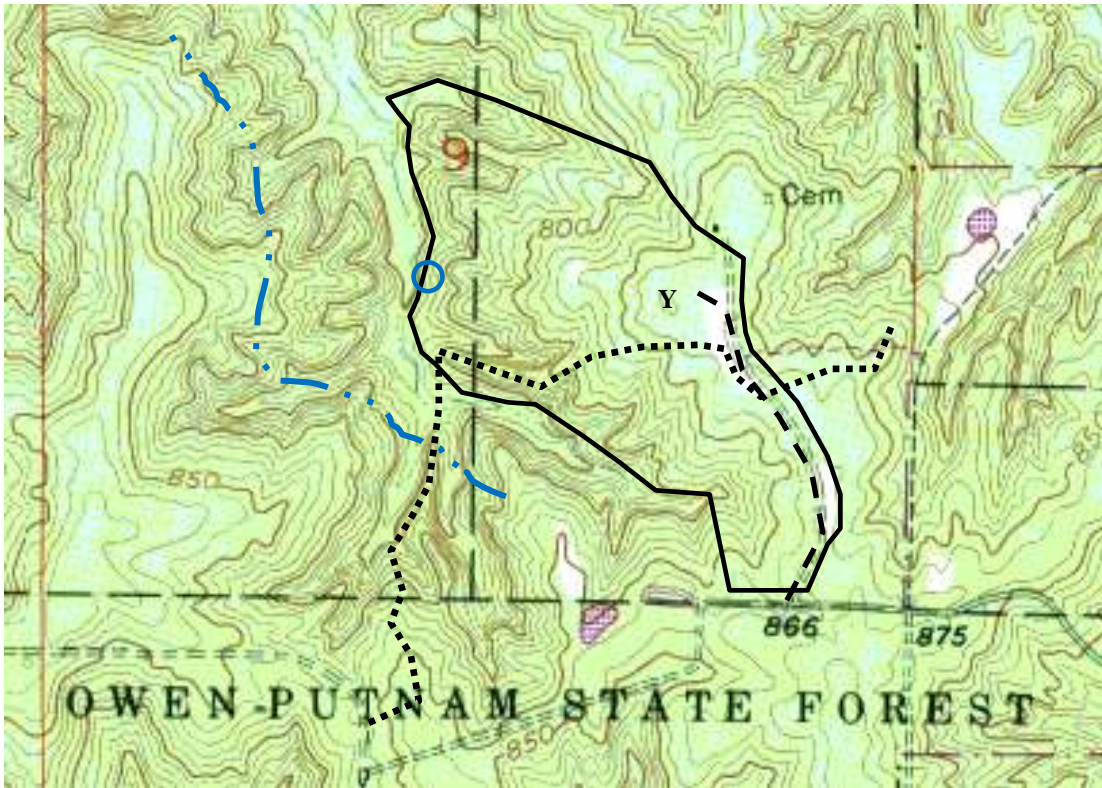
2014 ----- Timber Inventory  
 2014 ----- DHPA Archaeological Clearance Application  
 2014 ----- Resource Management Guide  
 2014/15 ----- Timber Marking and Sale Layout  
 2015 ----- Timber Sale  
 2015-17 ----- Timber Harvest  
 2015-18 ----- Post-Harvest TSI and Exotic/Invasive Control  
 2015-18 ----- BMP Monitoring  
 2029 ----- Timber Inventory  
 2029 ----- Resource Management Guide

**Topographic Map**  
**Compartment 4 Tract 11**  
90 - Acres

USGS - 7.5 Minute Series  
Cataract Quadrangles  
Owen Co. Section 9, T11N, R4W



Tract Boundary - Haul Road - Horse Trail -   
Intermittent Stream - Log Yard - Pond -



**Use the link below to submit a comment on this document:**  
[www.in.gov/dnr/forestry/8122.htm](http://www.in.gov/dnr/forestry/8122.htm)

You must indicate the State Forest Name, Compartment Number and Tract Number in the "Subject or file reference" line to ensure that your comment receives appropriate consideration. Comments received within 30 days of posting will be considered. Note: Some graphics may distort due to compression.