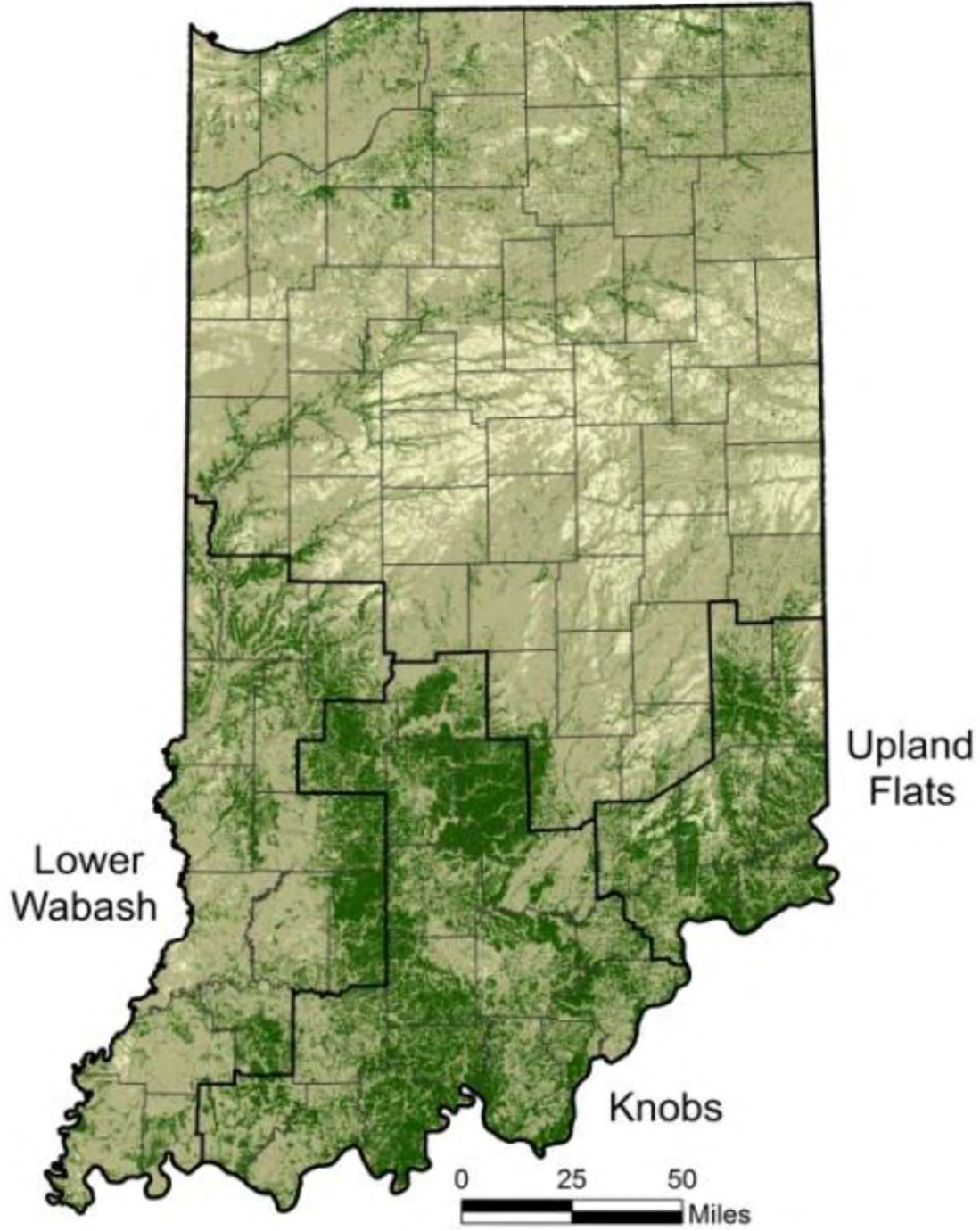


# Indiana Department of Natural Resources

## Northern Division of Forestry



### Indiana Forestland

#### ACRES

4.9 M acres

3% increase since 2009

4.1 M acres private (84%)

391 K acres state & local (8%)

380 K acres federal (7.4%)

161 K acres Reserved (3%)

#### FOREST TYPE/TREES

71% Oak – Hickory Type

Sugar Maple - 360M trees

Red Maple - 110M trees

#### VOLUME

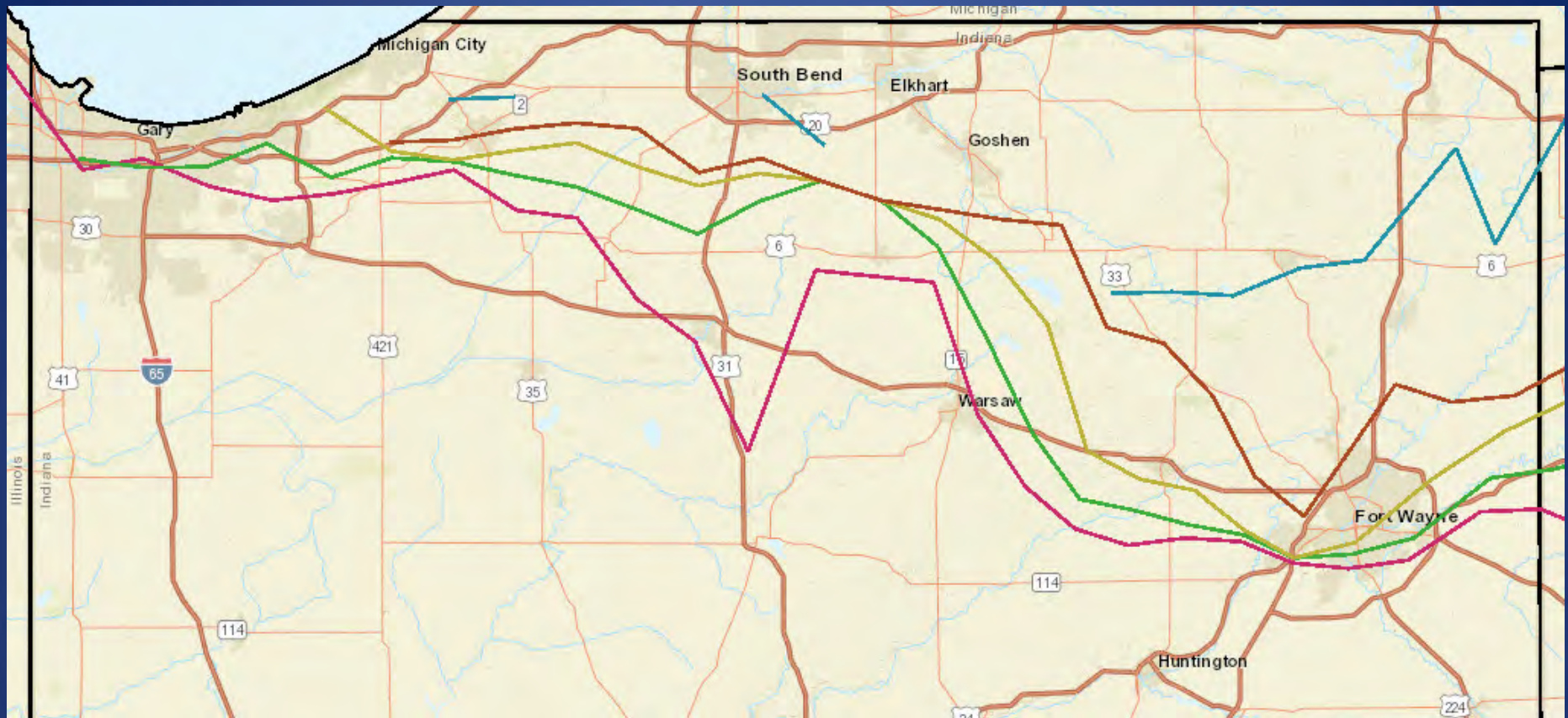
Yellow Poplar - 1.24 B cu.ft.

#### MORTALITY (2014)

1.4% of net volume

= 30.4% increase 2009-2014

1. Black Oak;
2. Yellow Poplar;
3. White Ash;
4. Sugar Maple



## Gypsy Moth 2017

Moth lines in northern Indiana

1,3,10, 30 moth line from south to north

For the past 30+ years gypsy moth has not moved below U.S. Hwy 30



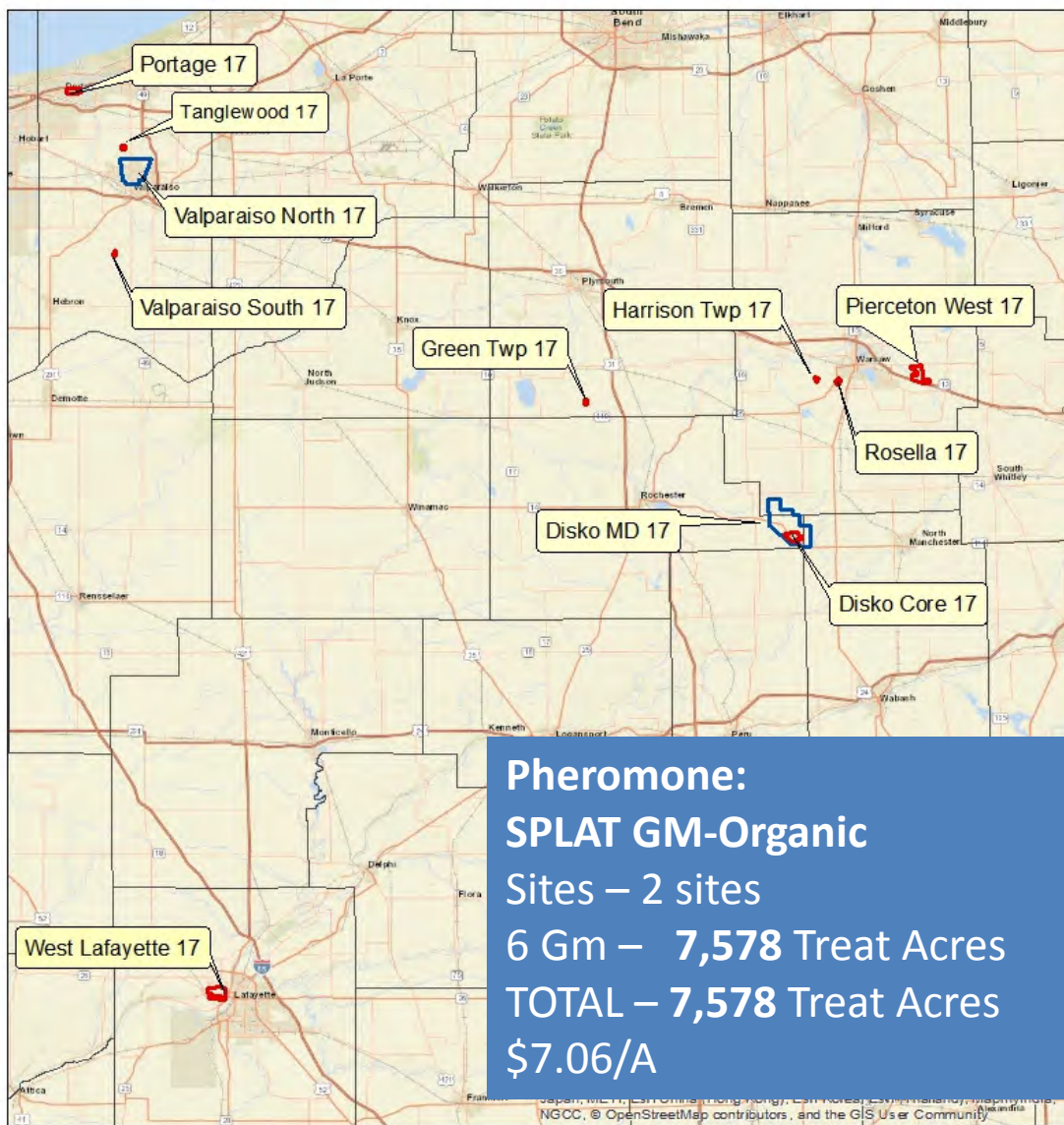
## 2017 Gypsy Moth Treatment Sites Overview of all Sites



Btk



Mating Disruption



## B.t.k. Aerial treatment: Foray 76B

9 Sites Total

STS - 4 sites - 2 apps. 4 sites - 1 app.

25 BIU

– 1,563 Treat Acres

– 2,248 Treat Acres – all apps.

1<sup>st</sup> app. May 12<sup>th</sup>, (8 sites – 763 A)

2<sup>nd</sup> app. May 16<sup>th</sup>, (4 sites – 685 A)

Eradication - 1 site x 1 app.

36 BIU

– 800 Treat Acres

1<sup>st</sup> app. May 7<sup>th</sup>

Total treat acres - **2,363**

Total treat acres all apps. – **3,048**

**\$34.41/A/app** for STS

**\$42.53/A/app** for Eradication

**\$77,353.68** STS

**\$34,024.00** Eradication\$

**\$111,377.68 total**

# 2017 TCD Survey

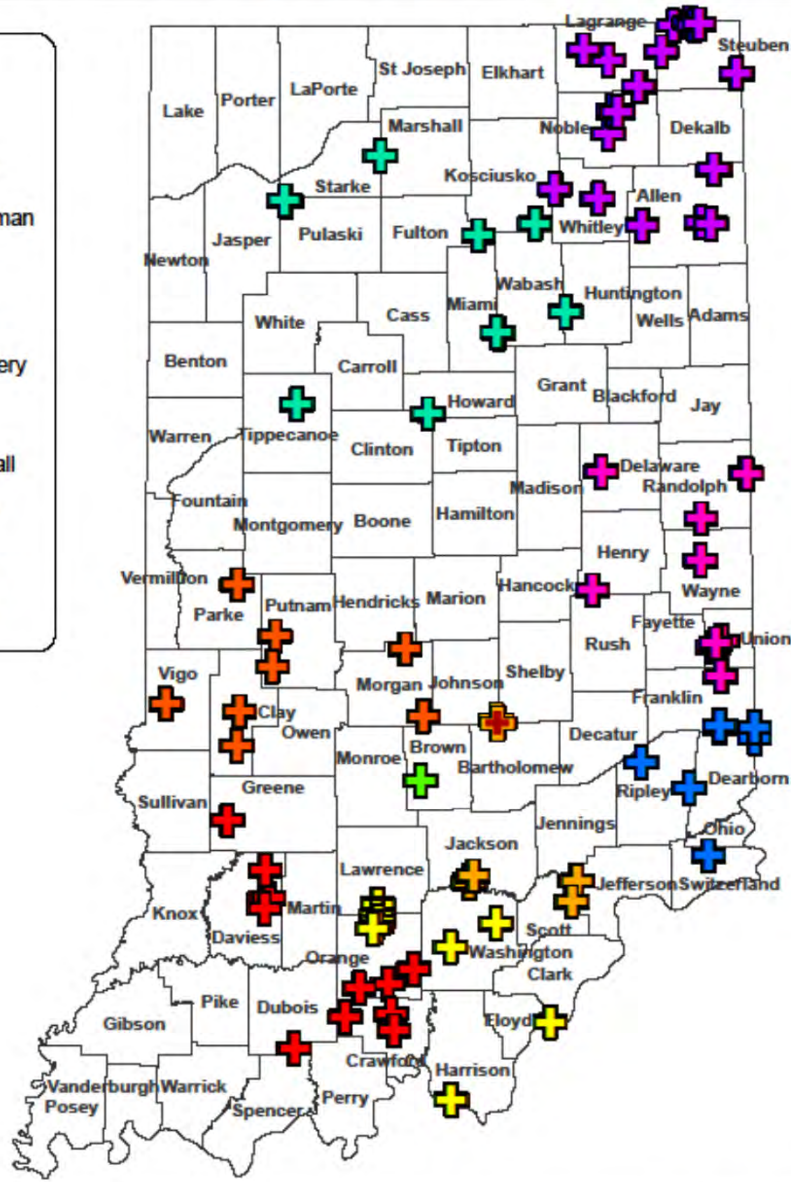
## State Overview



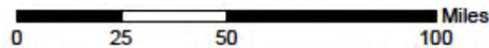
### Legend

#### Trapper

- + Bruce Bolton
- + Chuck Haberman
- + Dana Miller
- + Dana/Chuck
- + Jim Montgomery
- + Ken Cote
- + Nancy Marshall
- + Phil Marshall
- + Ron Vaughn
- + Terry Shafer



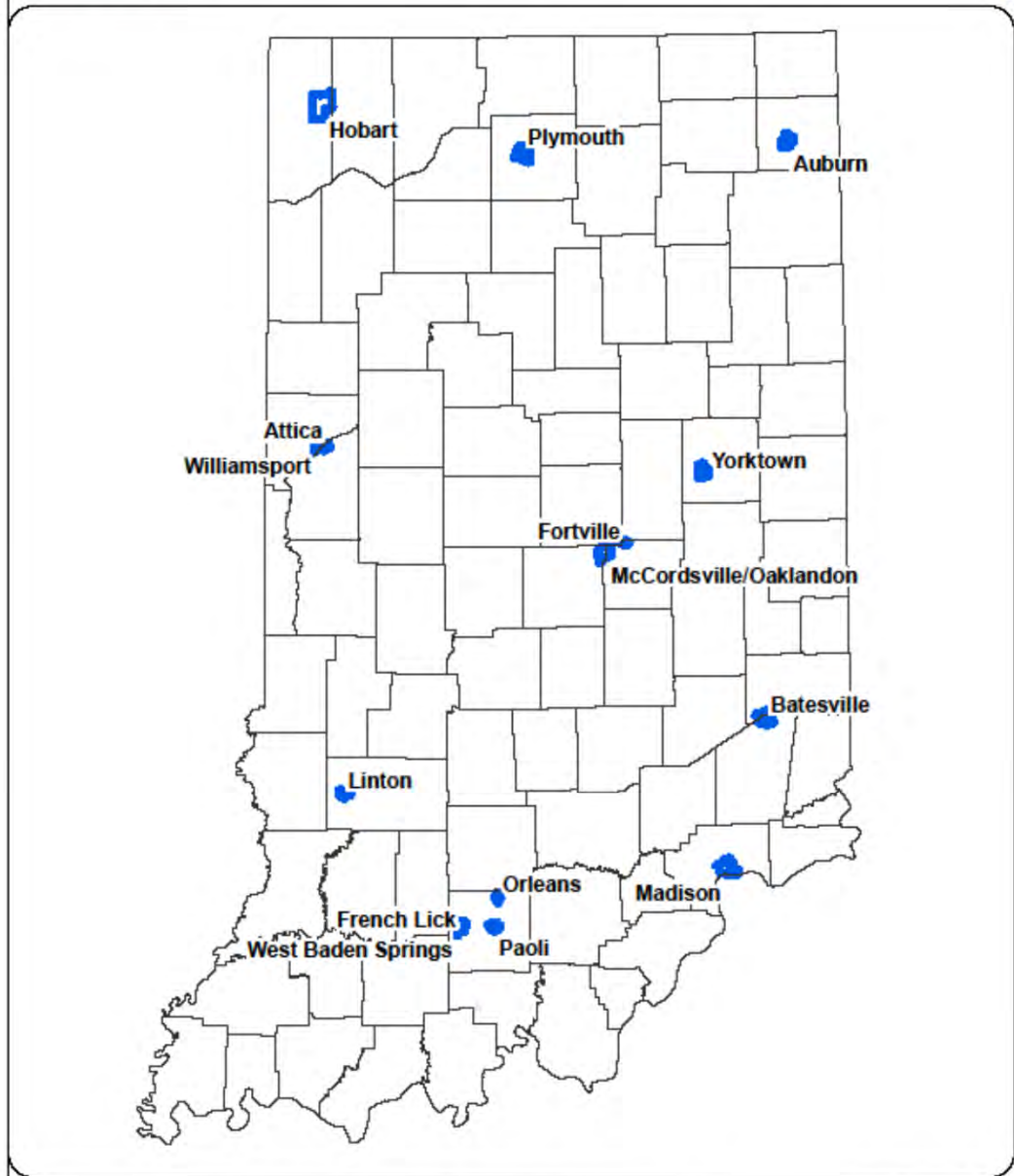
1:2,000,000



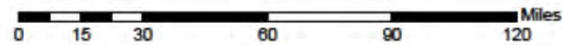
Map by: Vince Burkie  
Data provided by IDNR  
Date: 3/20/2017



# 2017 TCD Windshield Survey

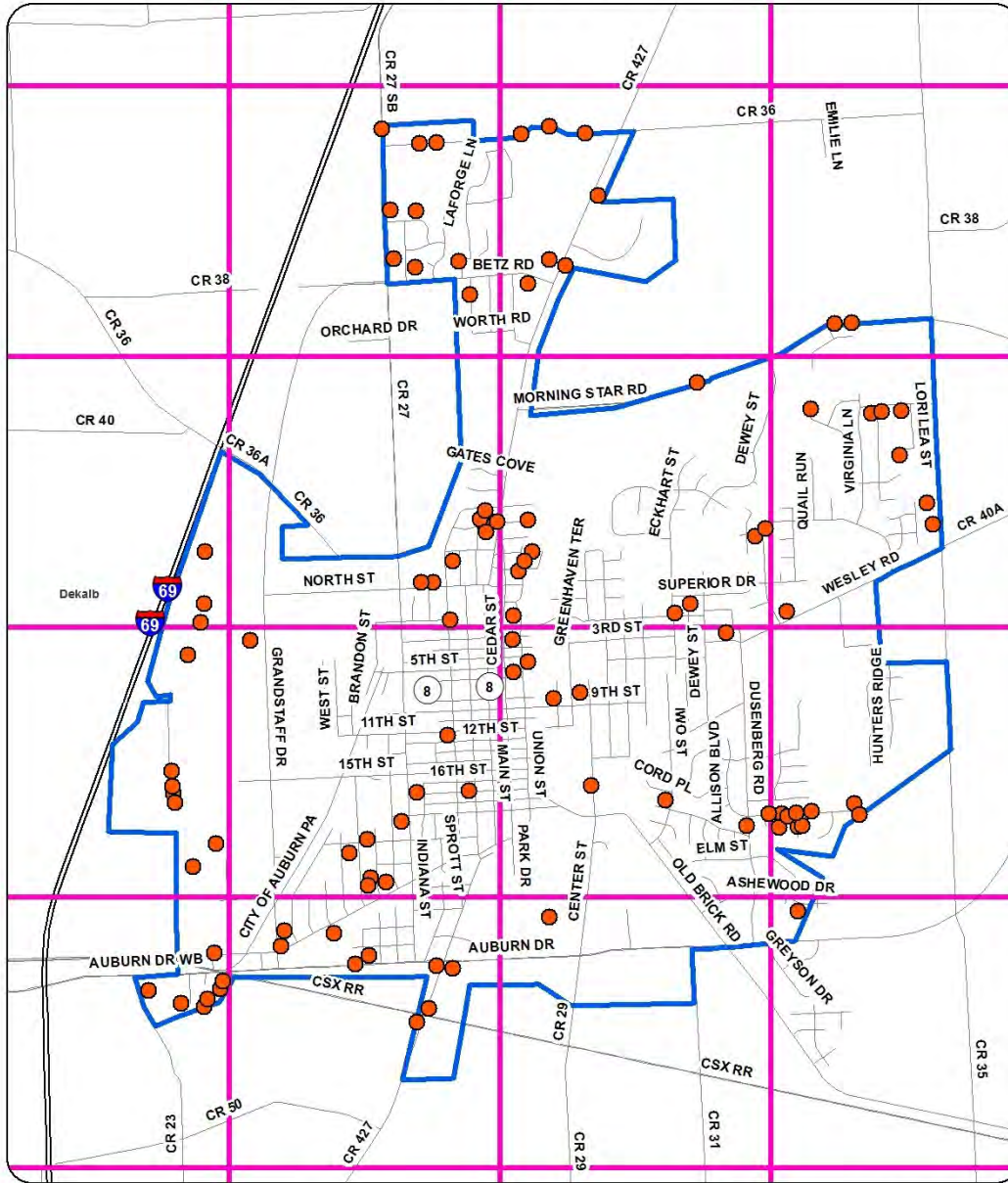


1:2,000,000

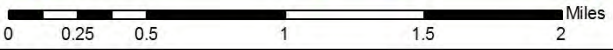


Map by: Vince Burkle  
06/11/2017  
Data provided by IDNR

# 2017 TCD Windshield Survey Auburn, IN

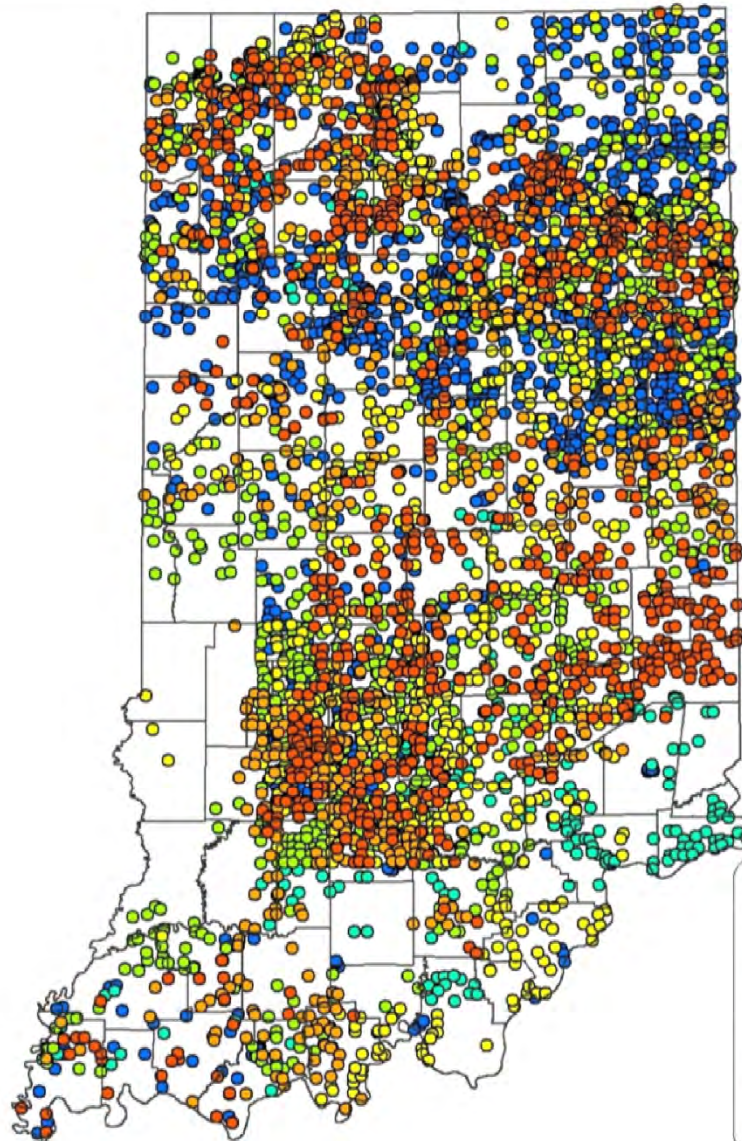


1:30,000



Map by: Vince Burkle  
06/12/2017  
Data provided by IDNR

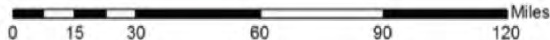




**Legend**

- 2016
- 2015
- 2014
- 2013
- 2012
- 2011

12,000,000



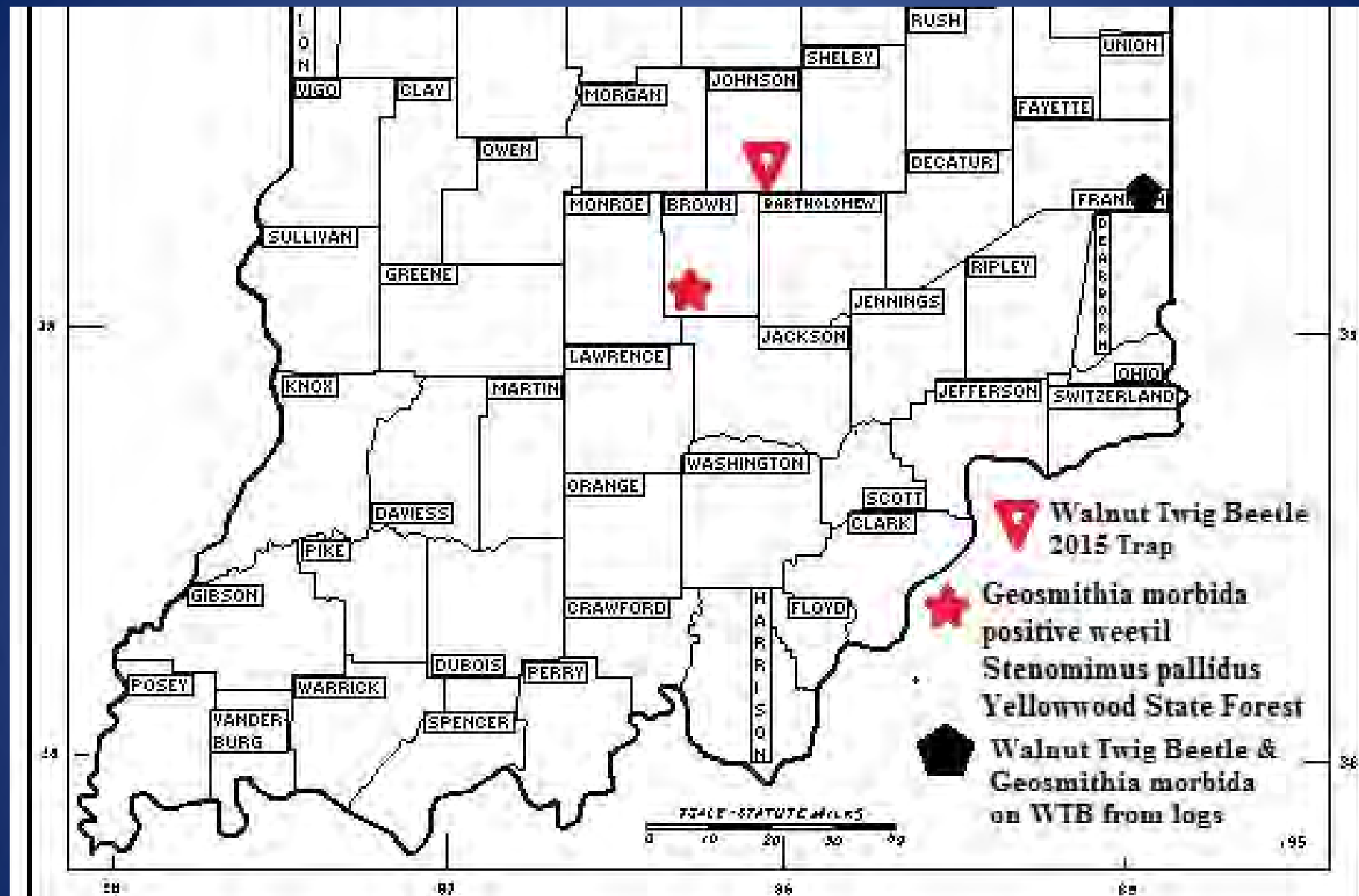
Map by: Vince Burkle  
08/11/2017  
Data provided by IDNR

808 walnut trees  
surveyed in 2016

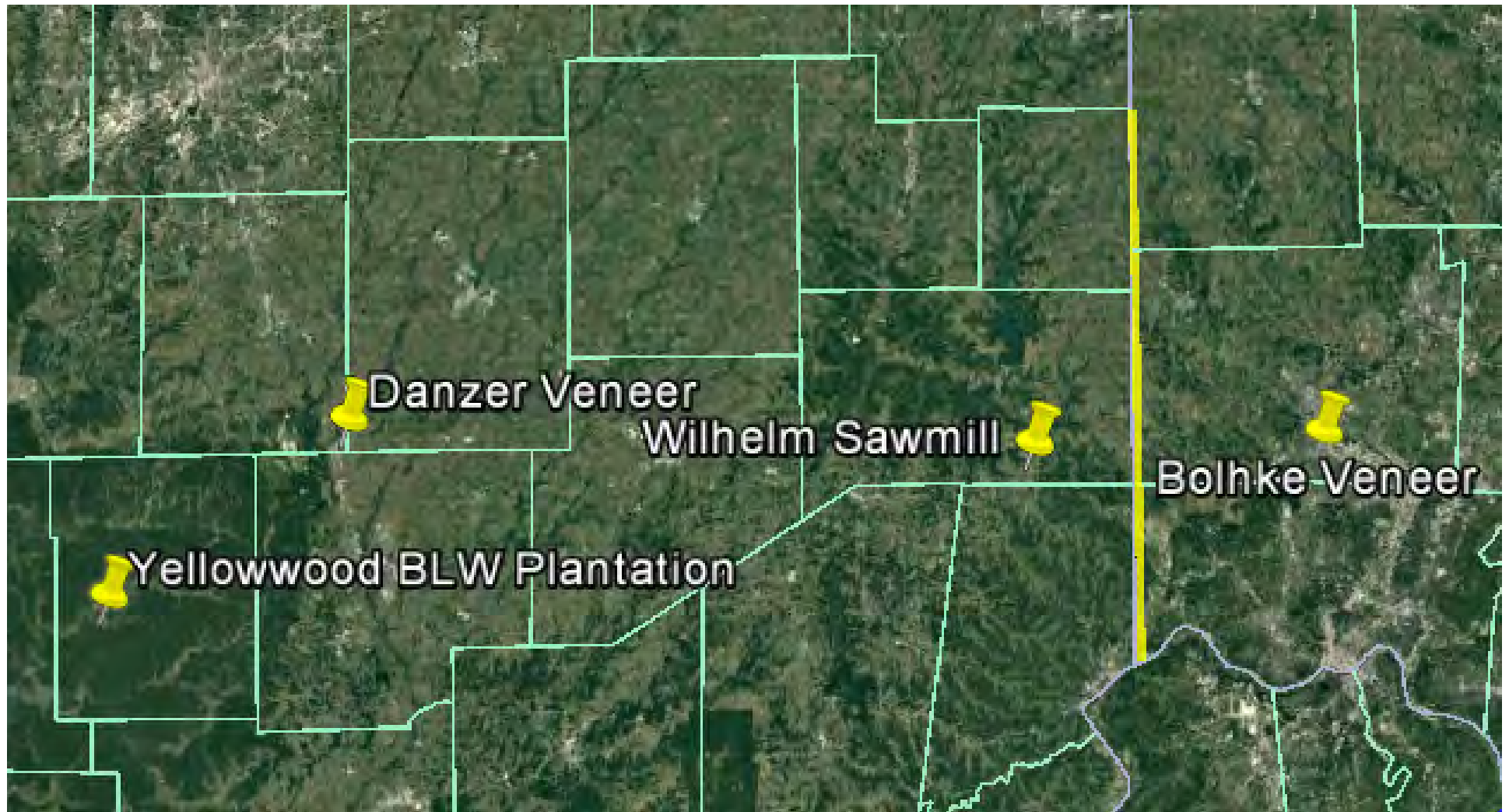
6419 walnut trees  
surveyed since 2011

289 trees since 2011  
recorded as having  
some sort of symptom

(yellowing, dead branches, brown leaves etc; none  
considered to be TCD but trees will continue to be  
evaluated)







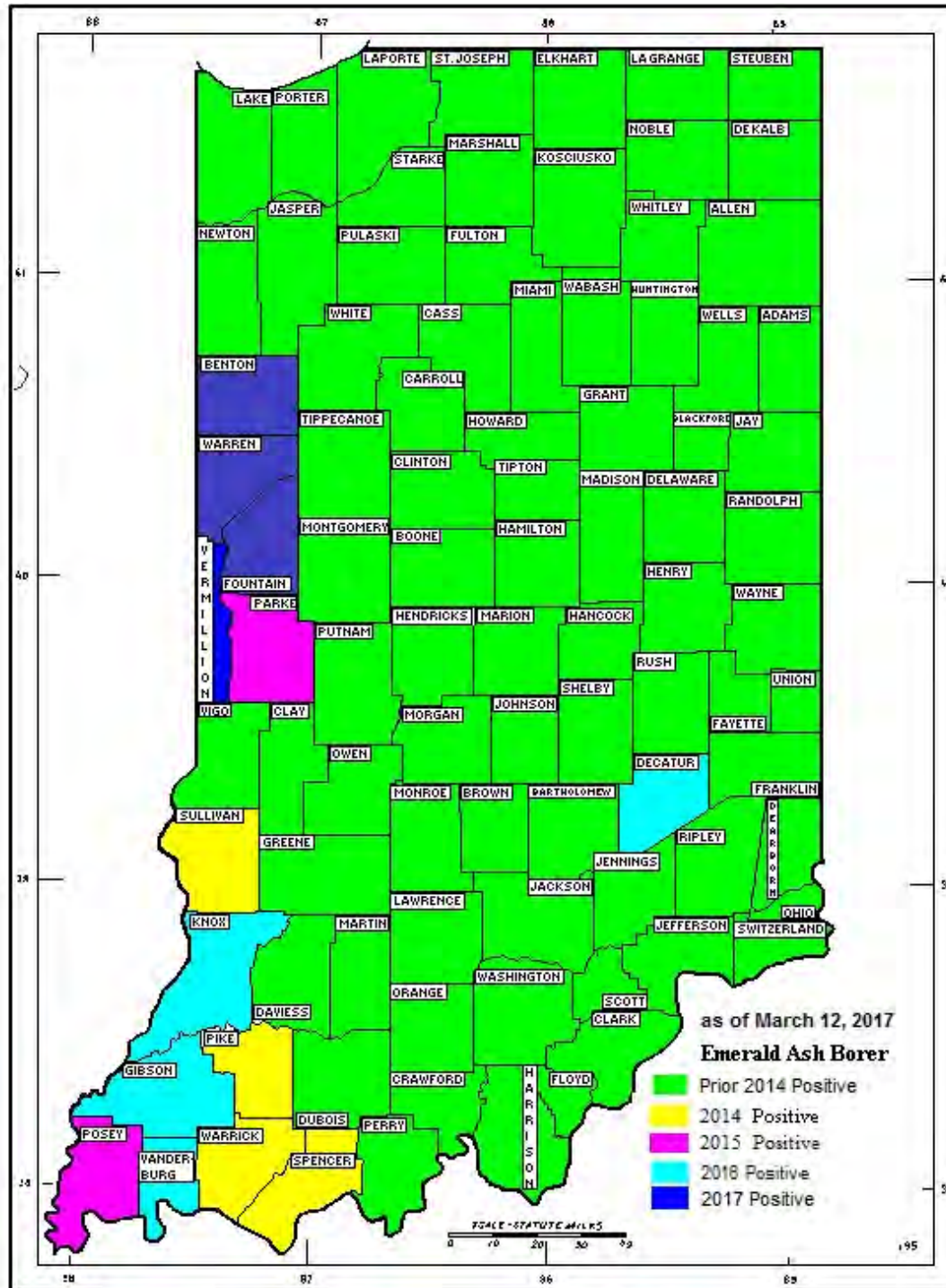
# Thousand Cankers Disease

# Thousand Cankers Disease

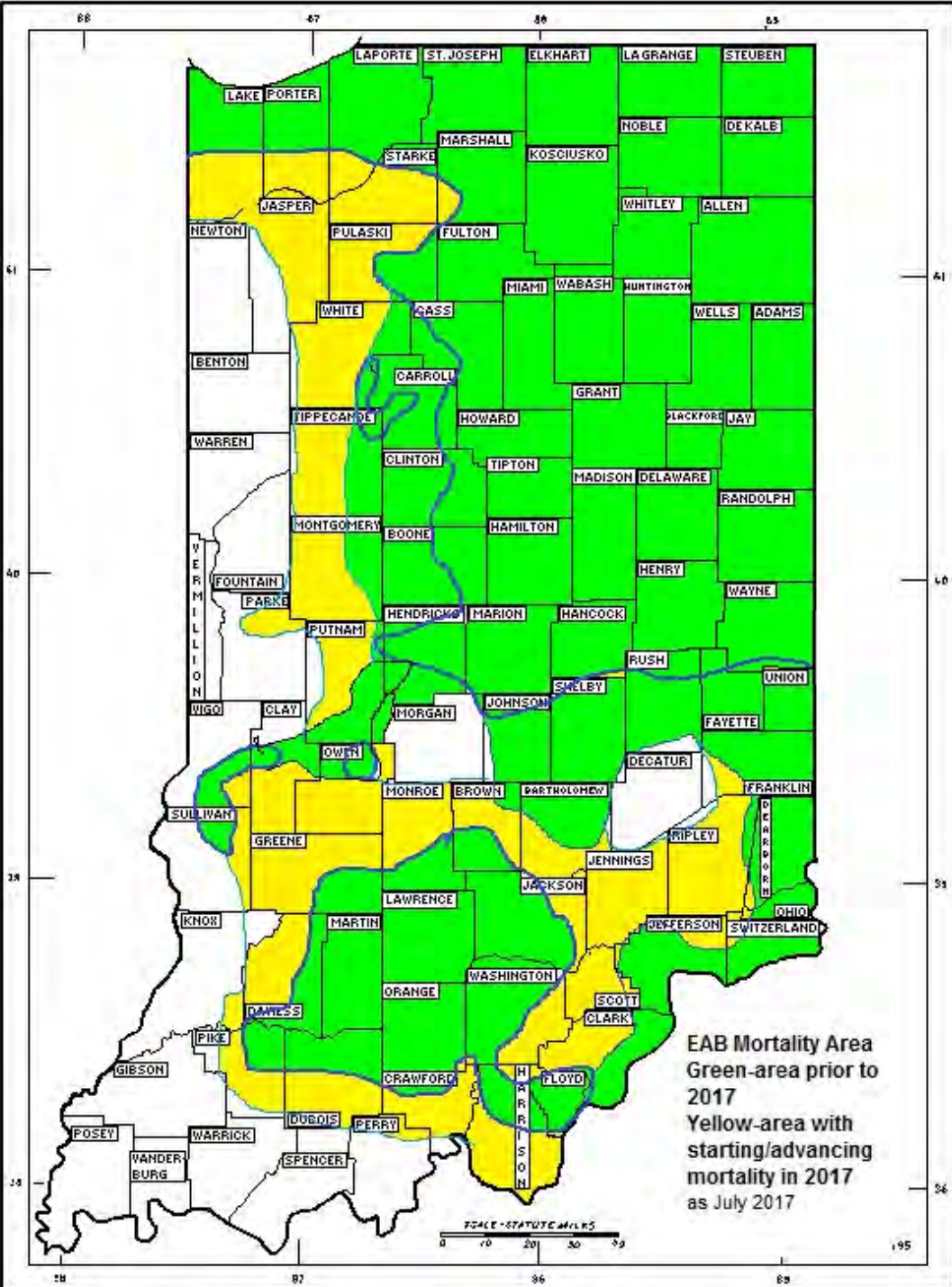
- WTB has **NOT BEEN DETECTED AND CONFIRMED** from a walnut tree in Indiana.
- *Geosmithia morbida* has **NOT BEEN DETECTED AND CONFIRMED** from a walnut tree in Indiana.



# Emerald Ash Borer



# Emerald Ash Borer Mortality



- 2005 -2016
- 2017







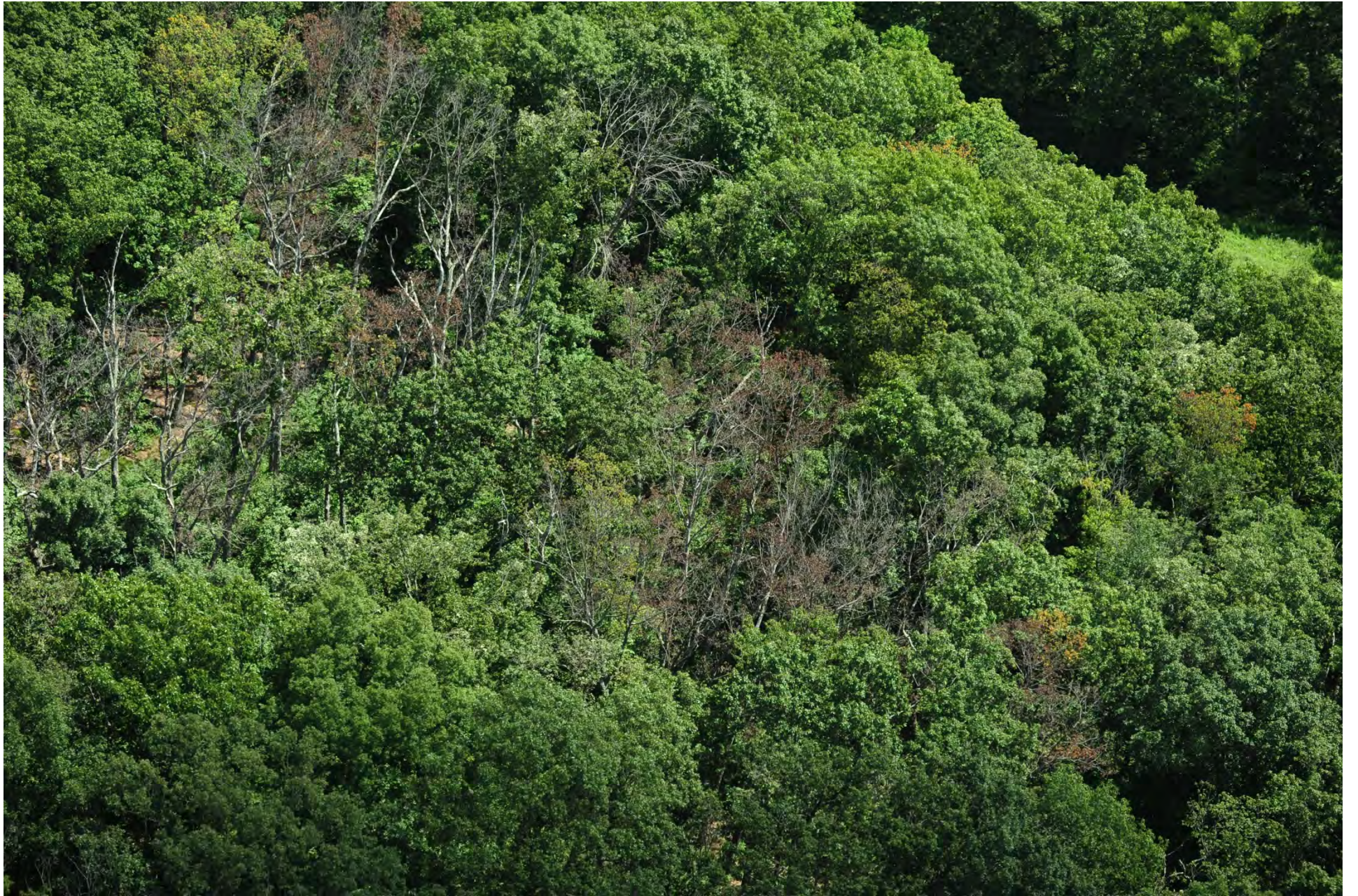




# CHESTNUT OAK MORTALITY

























# Hemlock Woolly Adelgid





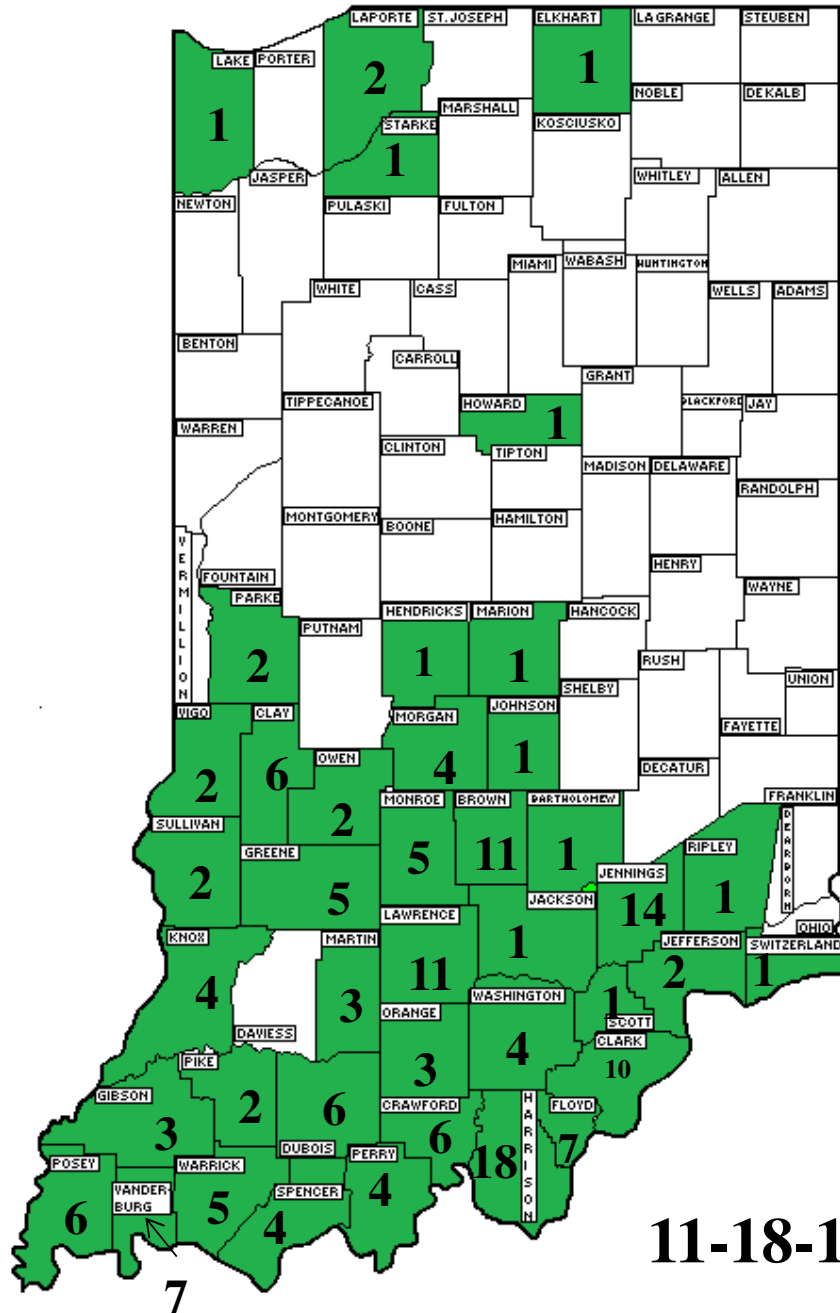
# Distribution of Kudzu in Indiana

Numbers inside county indicate the number of sites identified in that county

**41 Counties**

**176 Sites**

**184.43 Acres**



11-18-16

