

**Lake Information:** 220 acres; 51 feet max depth

**Located:** Dugger, IN; Sullivan County

**GPS Coordinates:** N 39.05463°, W 87.33313°

**Fees:** None; Boats must have DNR Lake Permit

**Amenities:** 4 boat ramps, fishing pier

**Outboard Motor Restriction:** Electric motors only

**Stockings:** 1,100 Muskellunge annually, since 1997

**Information:** Phone: (812) 648-2810 Website: <http://www.in.gov/dnr/forestry/4821.htm>

**Fishing Regulations:** Statewide

**Best Fishing:** Largemouth Bass, Muskie and panfish

**DNR Contact Information:**

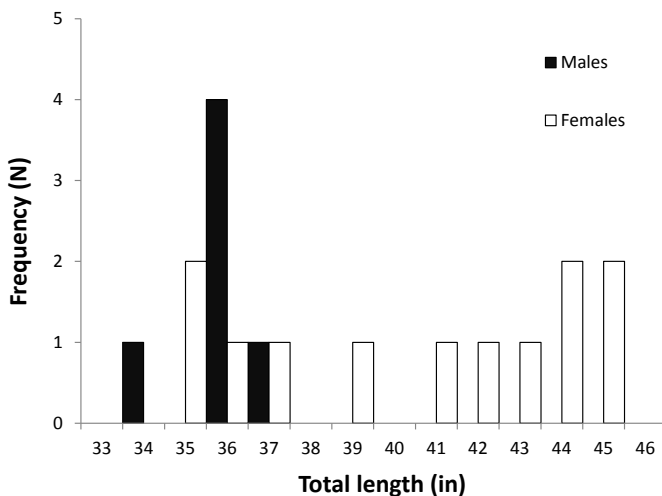
Dave Kittaka, Fish Management District 5

5596 E SR 46, Bloomington, IN 47401

(812) 287-8300; D5Fish@dnr.IN.gov

## Muskie

- Muskies were the second most sought species in a 2017 angler creel survey and 63% of Muskie anglers were extremely satisfied with fishing at Bass Lake.
- 28% of all anglers in the creel survey had 1 to 35 Muskie follows per trip.
- Largemouth Bass anglers have had Muskies attacking their caught Bass, so fish big lures.
- A 2016 Muskie survey at Bass Lake collected 29 fish from 33 to 45.5" and an above average catch rate (3.6 fish/lift) compared to other Muskie surveys.
- Connected to Bass Lake is Duck Lake that is also stocked with Muskies, but catch rate was below average (0.3 fish/lift) in 2016. This fishery is still developing since stocking started in 2008.
- The very clear water has a summer thermocline that sets up around 20 ft with abundant beds of Eurasian watermilfoil creating nice weed breaks to fish.



Muskie trap net catches from 2016 survey.

## Other Species

### Largemouth Bass

- Over 50% of anglers at Bass Lake target the abundant Largemouth Bass, with 7+ lbs fish being reported.
- A variety of fishing patterns develop throughout the year from fishing drop-offs, weed breaks, and shallow pitching, favoring any anglers strengths.

### Panfish

- Bass Lake and other surrounding lakes have abundant Bluegill and Redear Sunfish. Fishing is especially good during the spring with common catches of 8+”.
- There is a low abundance of Crappies in Bass Lake, but the fish in the lake are typically larger than 12”.



A 40” Bass Lake Muskie.

## About the area

- Greene-Sullivan State Forest has multiple coal strip pit lakes, most with boat ramps and electric-only motor restrictions.
- Many local lakes less than 30 minutes away with fish communities include panfish, Largemouth Bass and Channel Catfish. Bass Lake has an abundant population of 8-10lb Catfish.
- The area is an outdoors paradise with the State Forest, Shakamak State Park and 4 Fish and Wildlife Areas (fishing, hunting, and bird watching) including Goose Pond that is less than 30 min from Bass Lake.

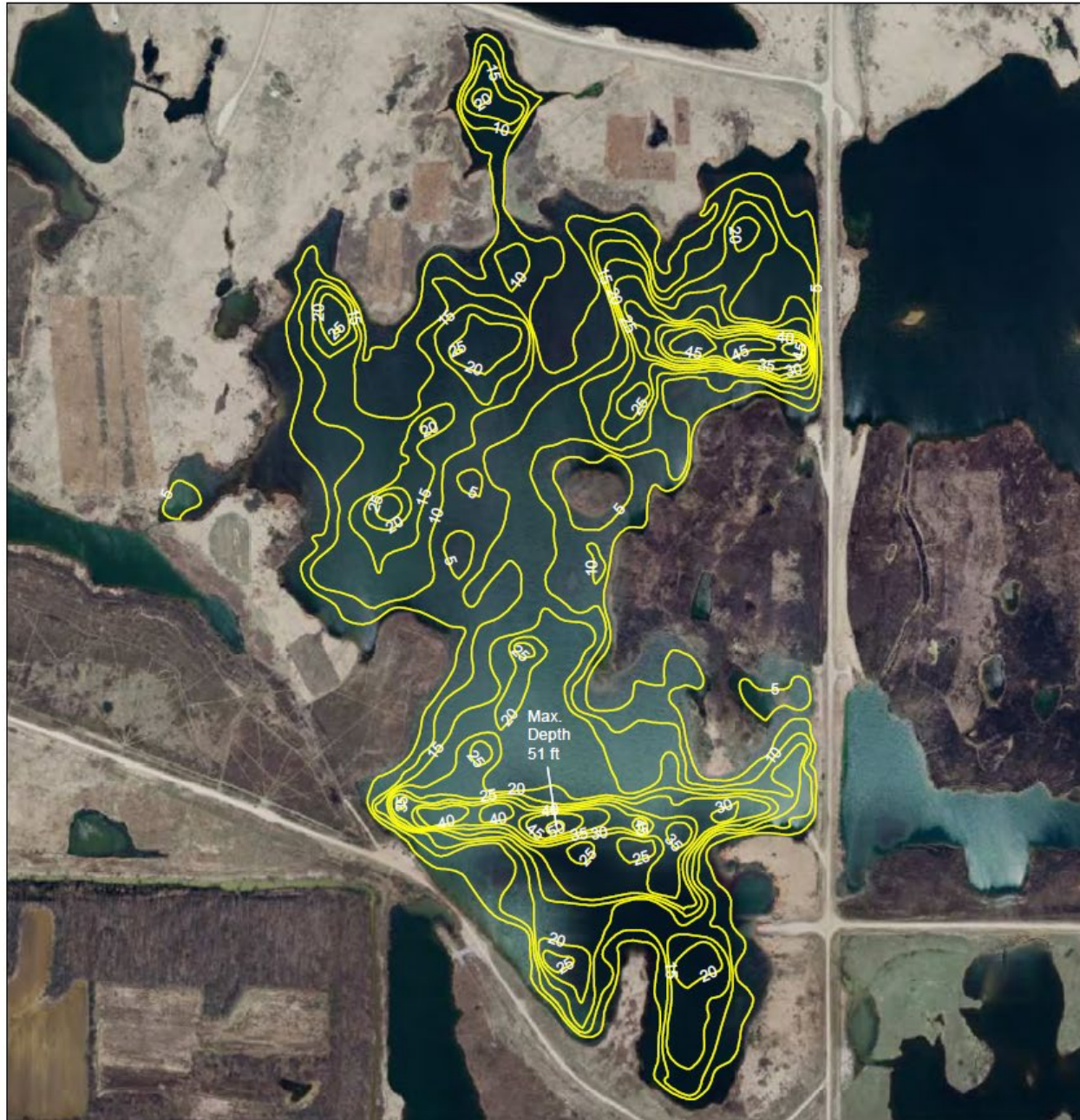


Your purchase of fishing equipment and motor boat fuel supports boating access and Sport Fish Restoration.

Indiana Fishing Regulation Guide:

<http://www.in.gov/dnr/fishwild/2347.htm>

# Bass Lake



Bass Lake - Dugger Unit  
Sullivan County, Indiana  
Survey Date: March 20, 2012  
Surface Area: 232 Acres  
HUC: 051201111507

— 5 foot contours

N



1:9,200

0 355 710 1,420  
Feet

Indiana Department of Natural Resources  
Division of Fish and Wildlife  
Lake and River Enhancement Program (LARE)  
2005 Orthophotography  
A. Haviland



© 2012 Indiana Department of Natural Resources (IDNR)  
(Permission is granted to reprint with credit given to IDNR)



Your purchase of fishing equipment and motor boat fuel supports boating access and Sport Fish Restoration.

Indiana Fishing Regulation Guide:

<http://www.in.gov/dnr/fishwild/2347.htm>