

CAPS

Strahl Lake

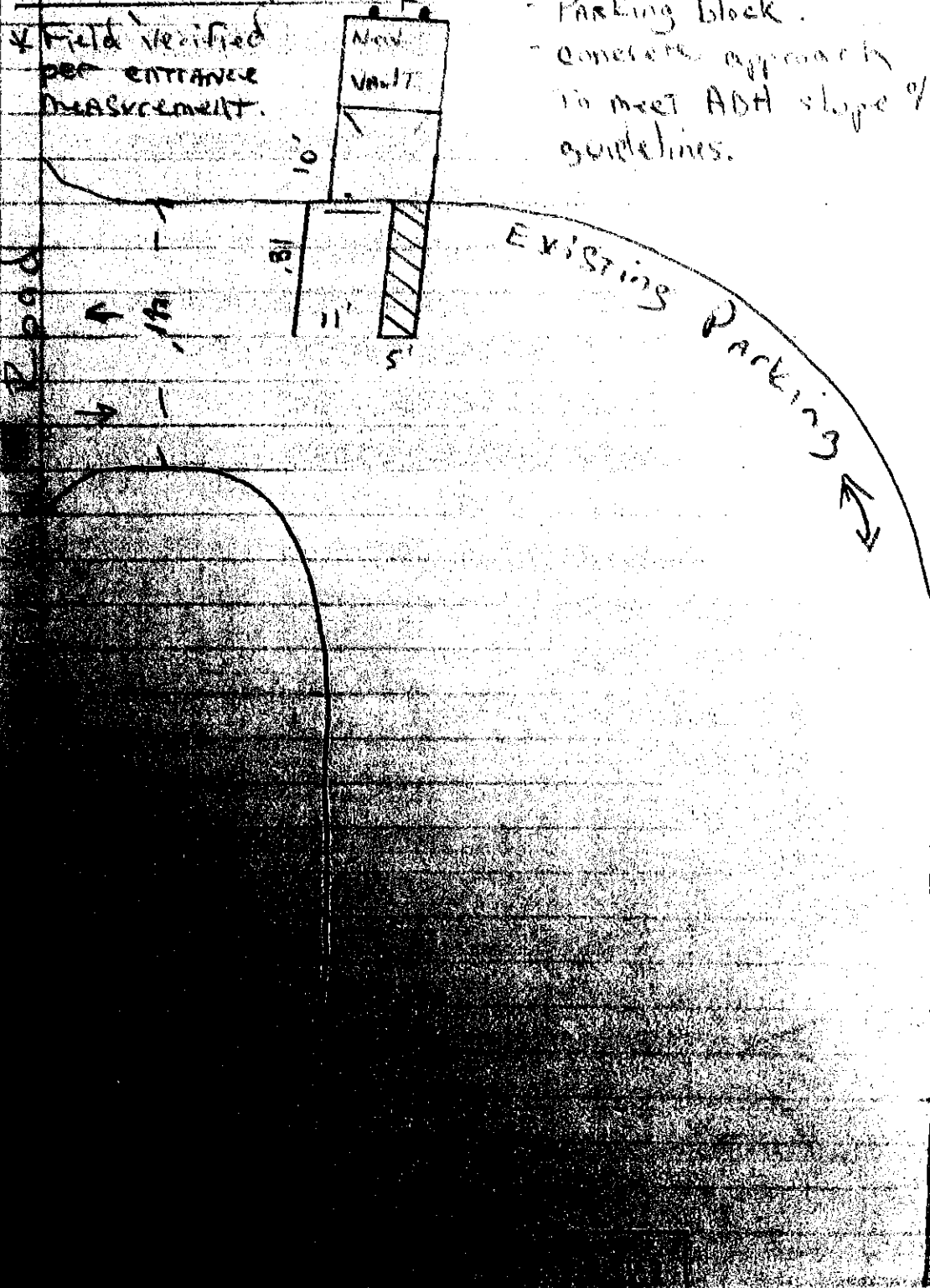
LAT + 39.14

Site # 1

LONG. - 86.22

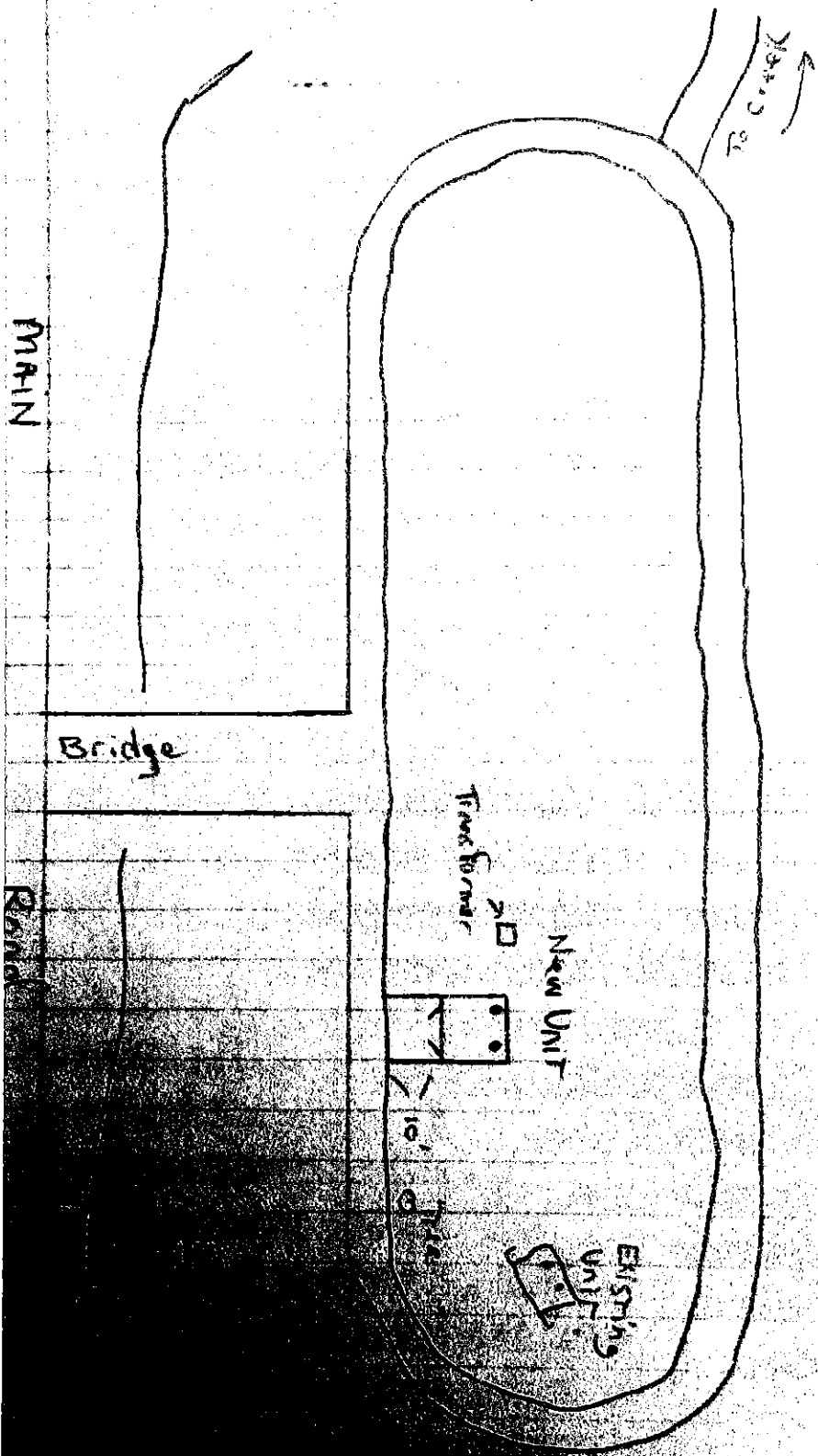
Remove existing
vault across
road by contractor.

- Grass seed in this area
- sign on bollard post
- vault finished floor 3" above asphalt & 4" packing.
- Parking block.
- concrete approach to meet ADA slope % guidelines.



GPS-39.129 786.17
 - Next to transformer
 - Seedling Corridor
 - Demo old unit.

Sire #2 - Horse Camp #1



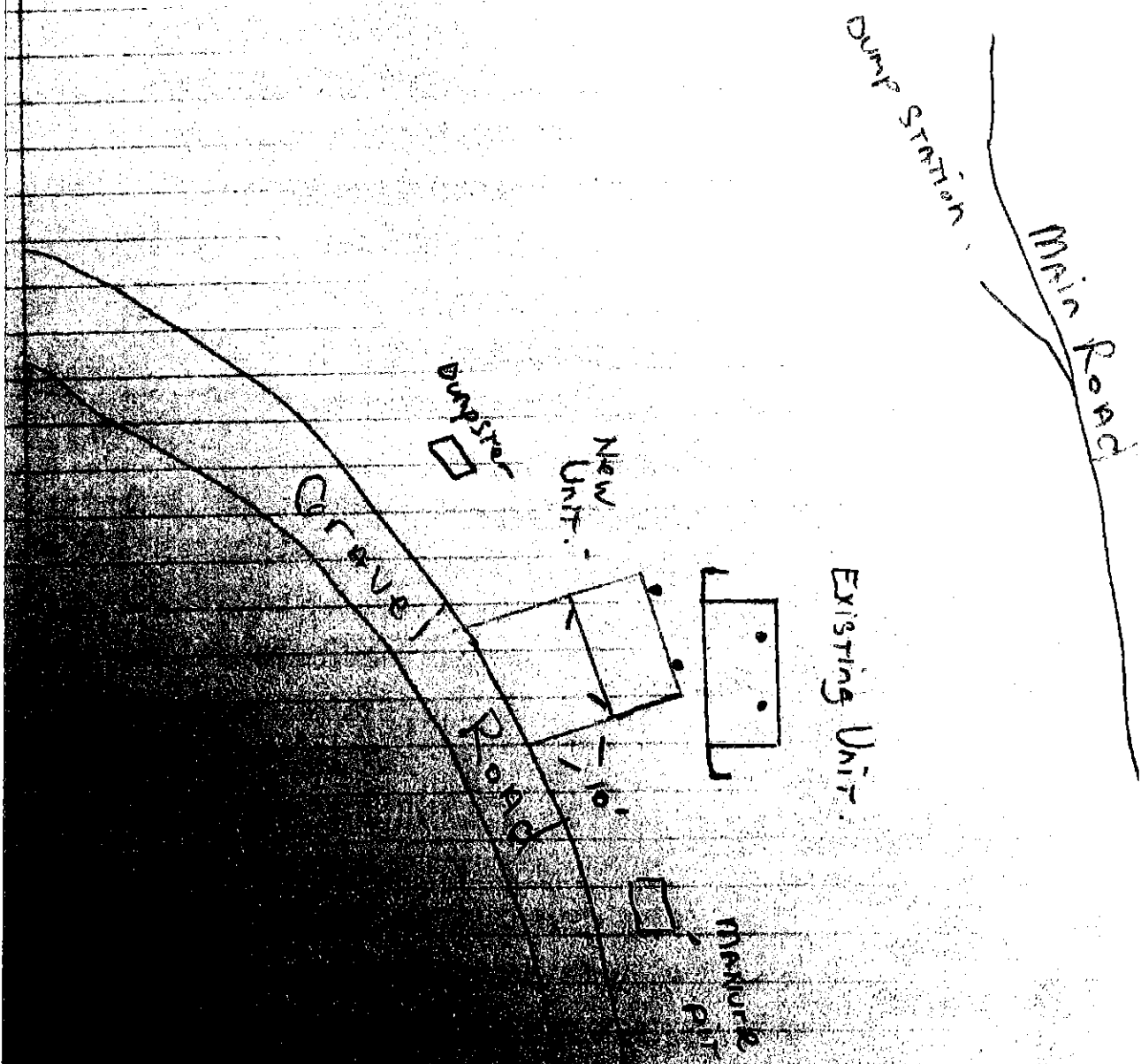
- Finish Floor 3' above gravel surface & front
- Concrete approach to meet P.D. slope % guidelines
- No Heavy weight on bridge.
- * Route TBD.
- All utilities to be verified by contractor.

NOT TO SCALE

GPS 39.125 x 89.192

Site #3 - Horse Camp #2

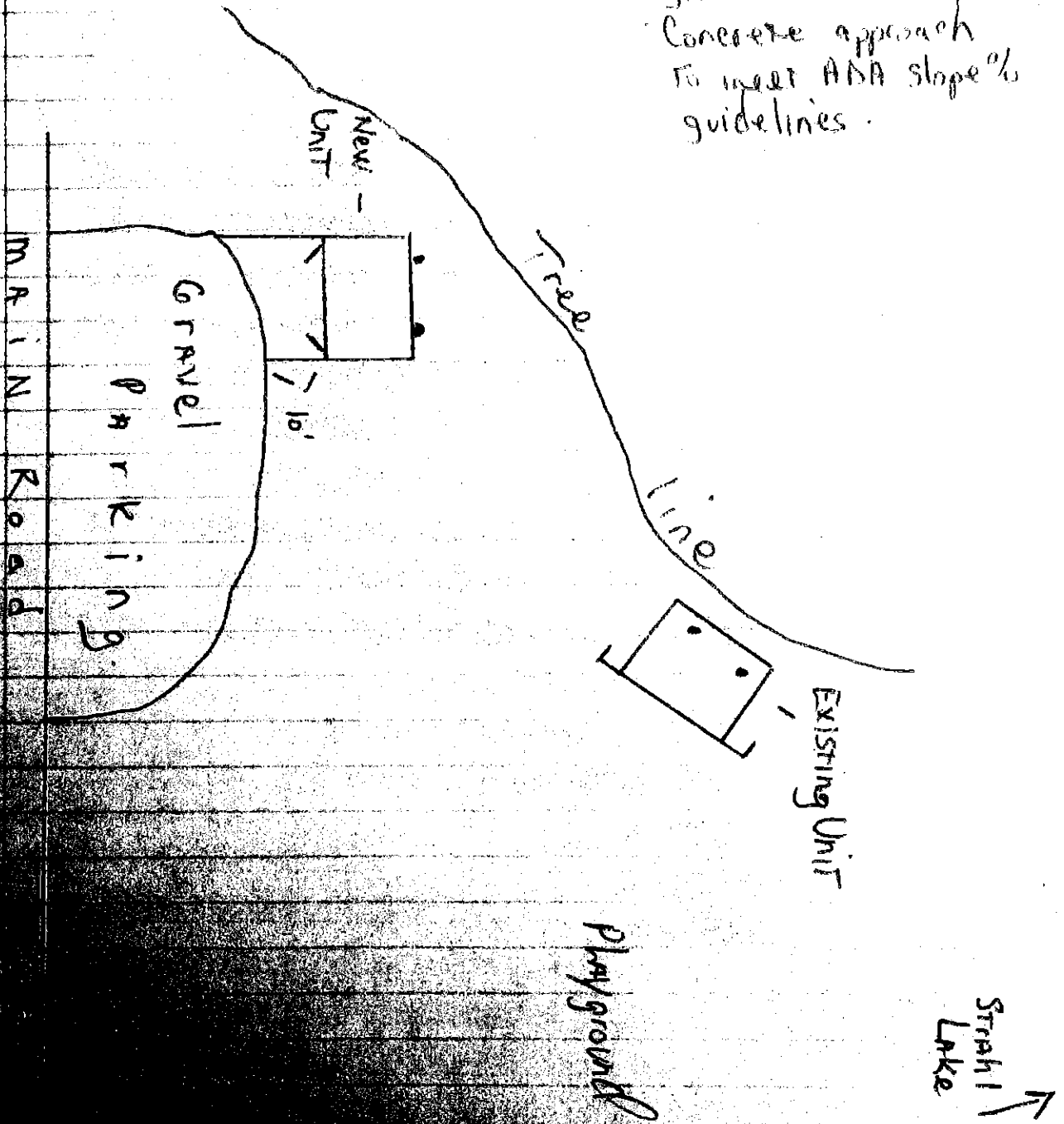
- New unit in front of old unit
- Seed finish grade
- Demo old unit.
- Finish floor 3" above gravel surface front of
- Concrete approach to meet ADA slope % guidelines.



CPS - 39.138 x 86.207

Site #4 - Kelp Playground

- Demolish old unit.
- Seed finish grade.
- Finish Floor 2" above gravel surface from concrete approach to meet ADA slope% guidelines.

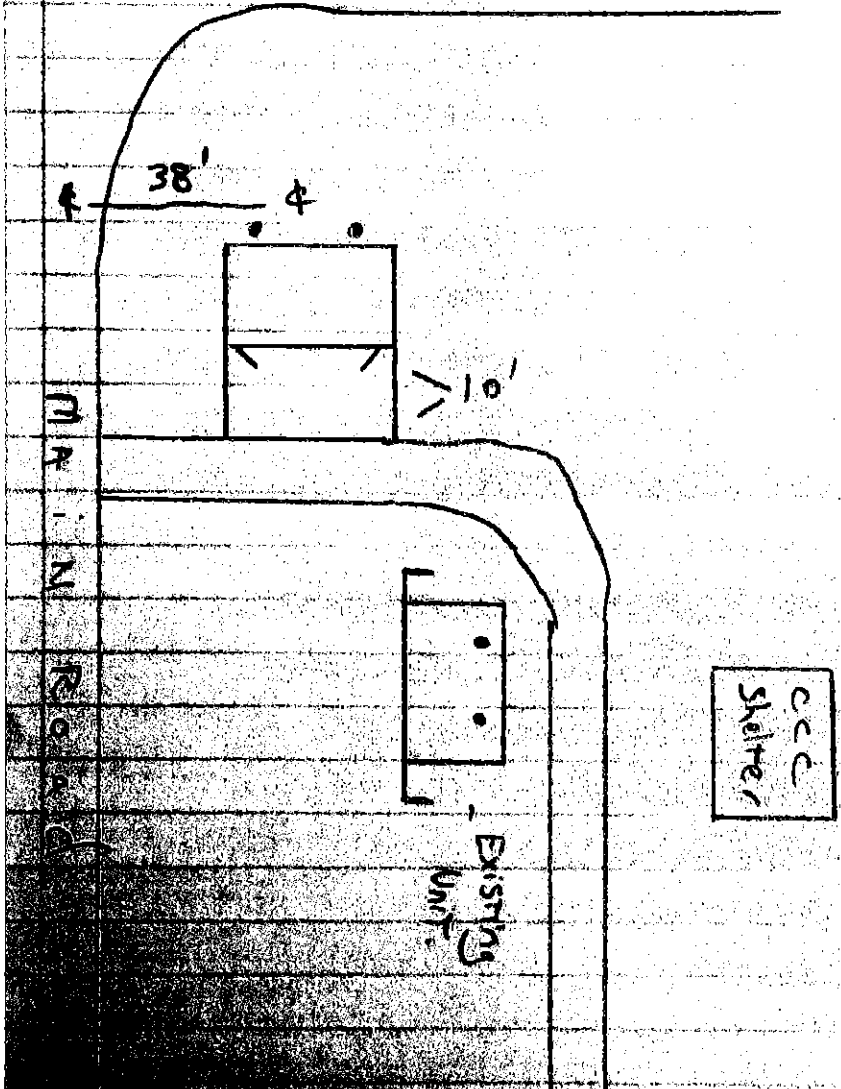


NOT TO SCALE.

CPS-39.143 x 86.726

Site # 5 - CCC Shelter

- Demo old unit
- Seed finish grade
- Finish floor 3" above gravel surface
- front d.
- Concrete approach to meet ADA Slope % guidelines.
- 38' off & line of main road to & line of unit.

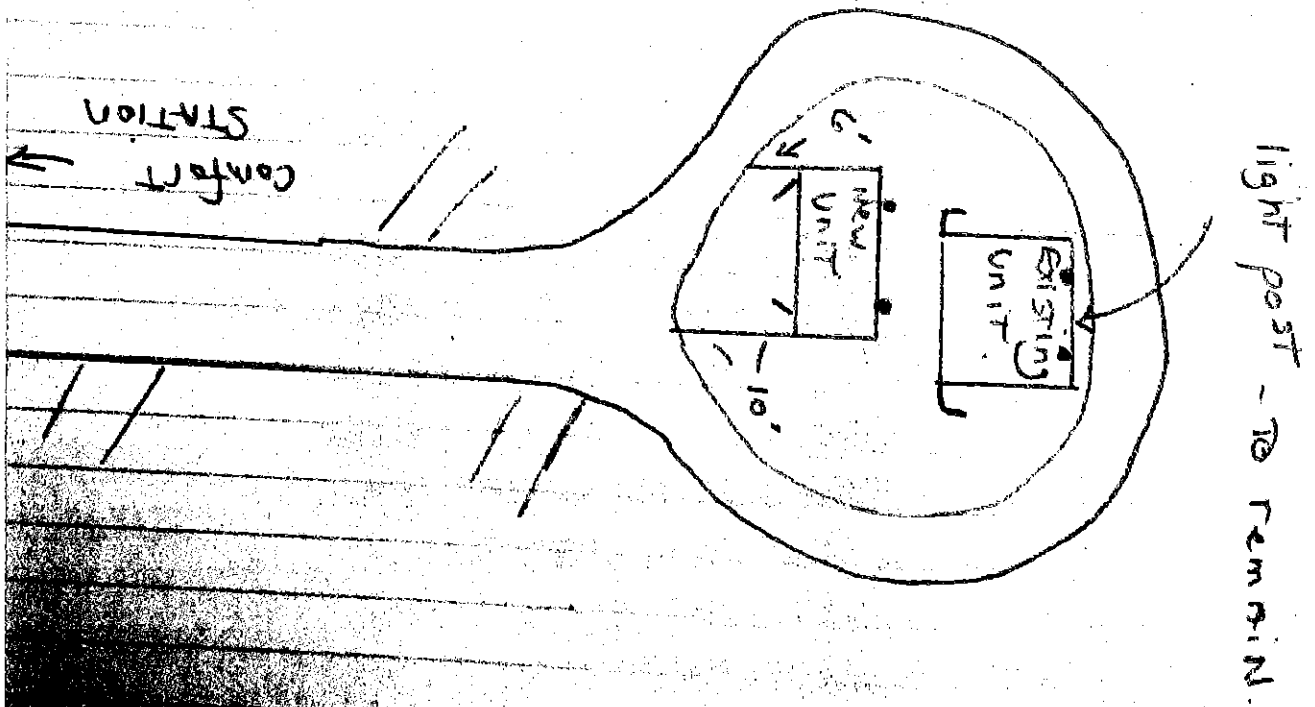


NOT TO SCALE

CPS 39.146 x 86.243

Site # Ce - Family Camp # 1

- Demo old unit
- Match Finish Concrete
- Finish Floor 3" above asphalt - high point - front.
- Concrete approach to meet ADA slope % guidelines.



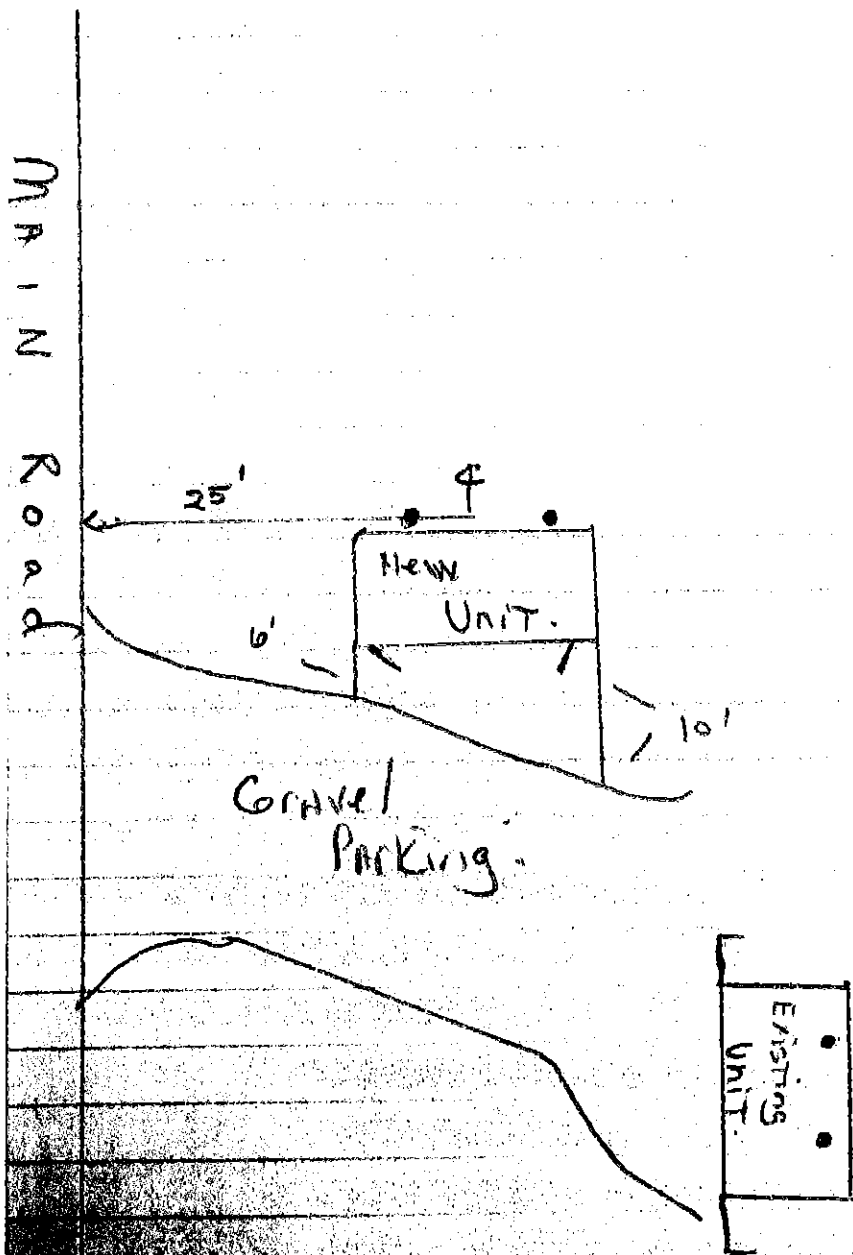
NOT TO SCALE

GPS-39.147 x 86.271

Site # 7 - Family Camp # 2

- Demo old UNIT.
- Match Finish Concrete
- Finish Floor 2' above gravel surface & Form

- Unit to set 25' off edge of main cond' asphalt. - to 4' of unit
- Concrete support
- To meet Road



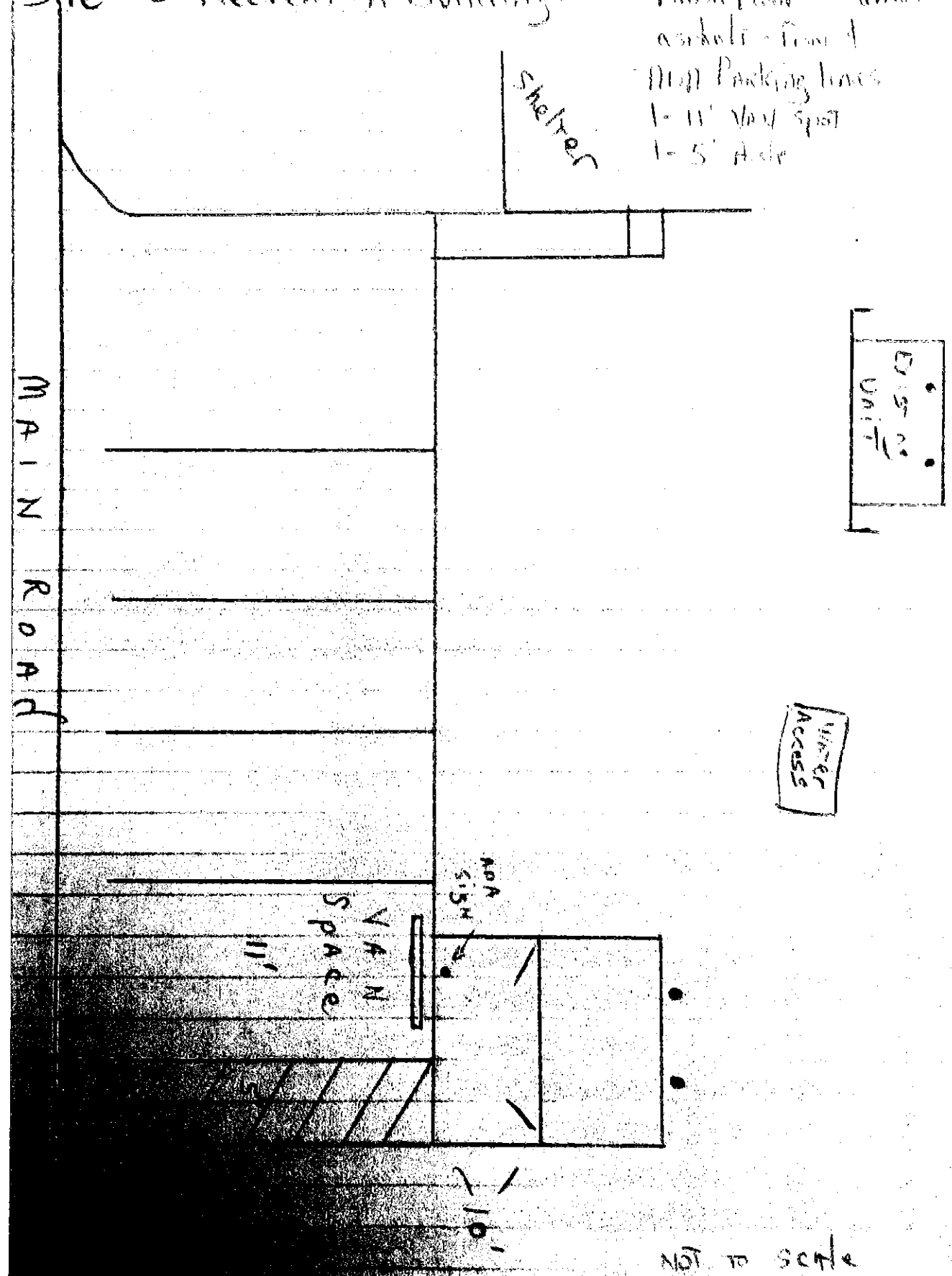
NOT TO SCALE.

- Concrete approach to meet ADA slope guidelines.

CPS - 29.1516 x 816.229

- Demo old concrete
- grass finish grade
- finish floor 8" above asphalt - form of
- Mill Packing lines
- 1- 11' x 11' spot
- 1- 5' x 5'

Site # 8 - Recreation Building

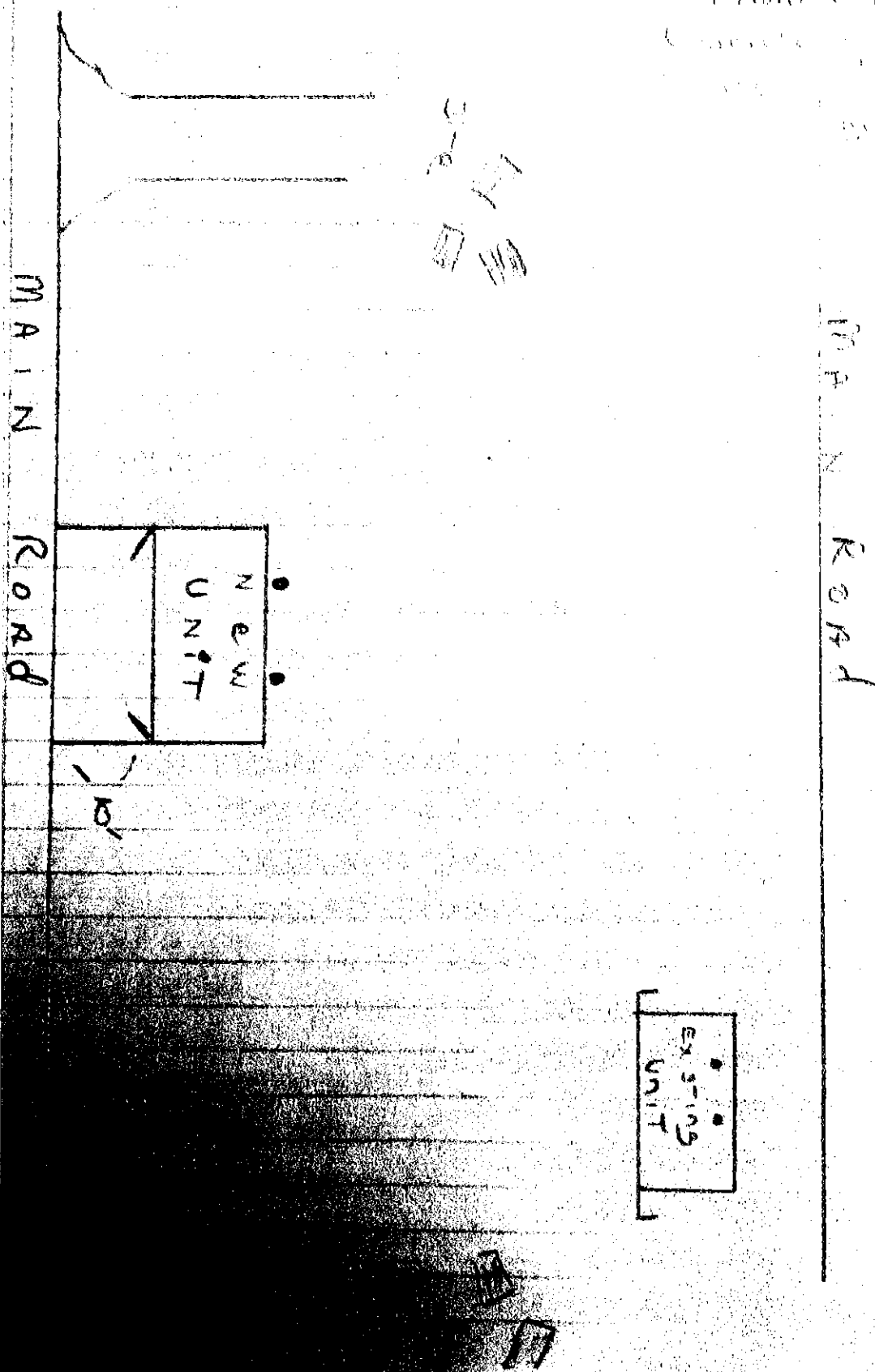


NOT TO SCALE

CoPS - 1978 X 862 40

NEW UNIT
EXISTING UNIT

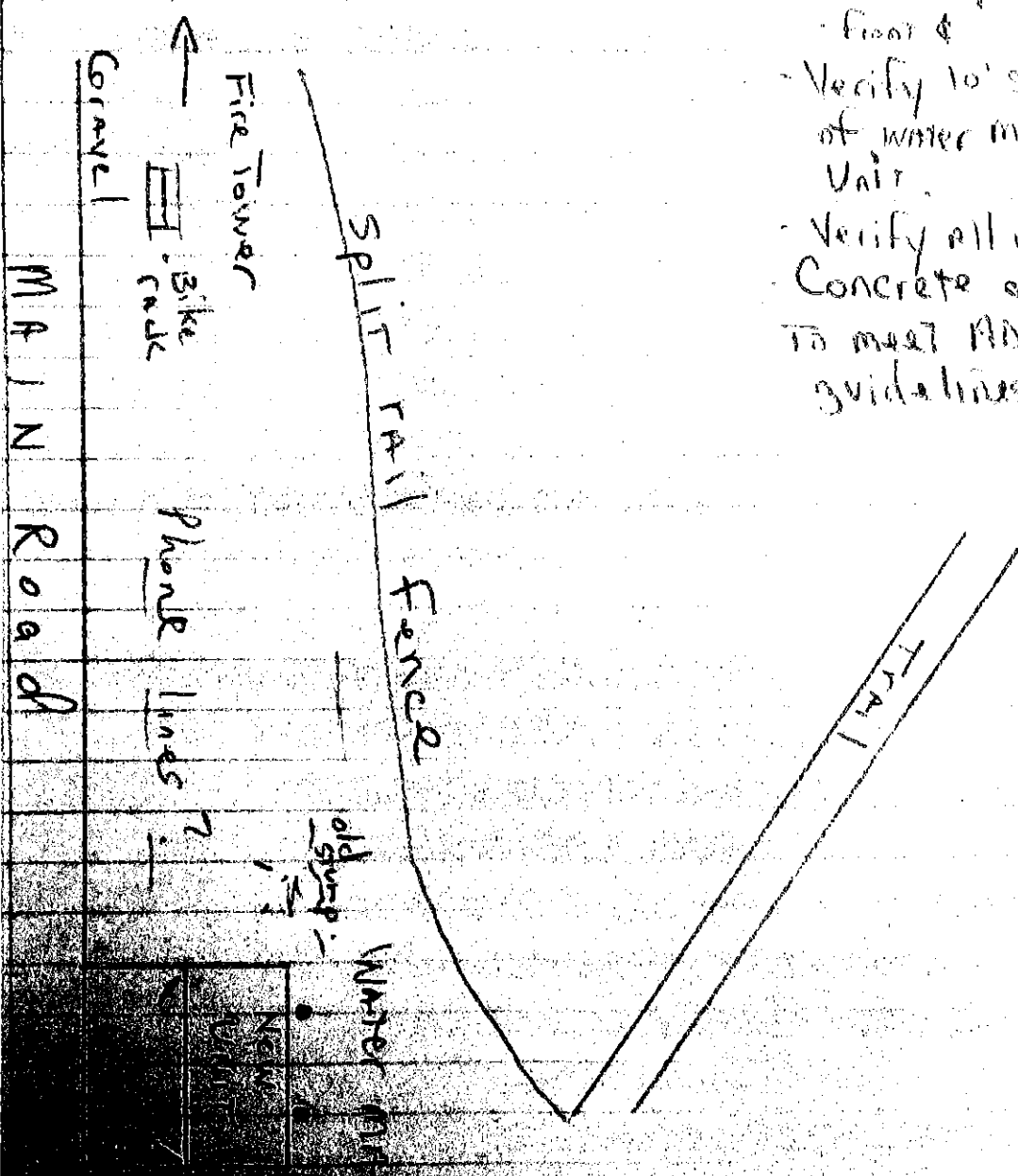
Site # 9: Rally Camp



COPS 29.11610 x 86.7110

Site # 10 - Fire Tower

- Demo old Unit
- grass back yard
- finish floor 3' above asphalt surface
- floor 6'
- Verify 10' separation of water main to Unit.
- Verify all utilities.
- Concrete approach to meet ADA slope % guidelines.



Not to scale

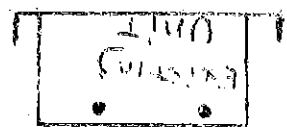
City 29.107 x 80.779

- Down old ca.
- pour for drainage
- Finish floor 3" above ground surface
- Foot 4
- Concrete approach to meet ADA slope to sidewalk.

Site # 11 Walnut Shelter

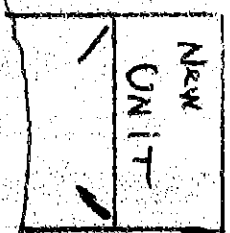
MAIN Road
Dyle Lake →

GRAVEL



Gravel

Gravel
PARK

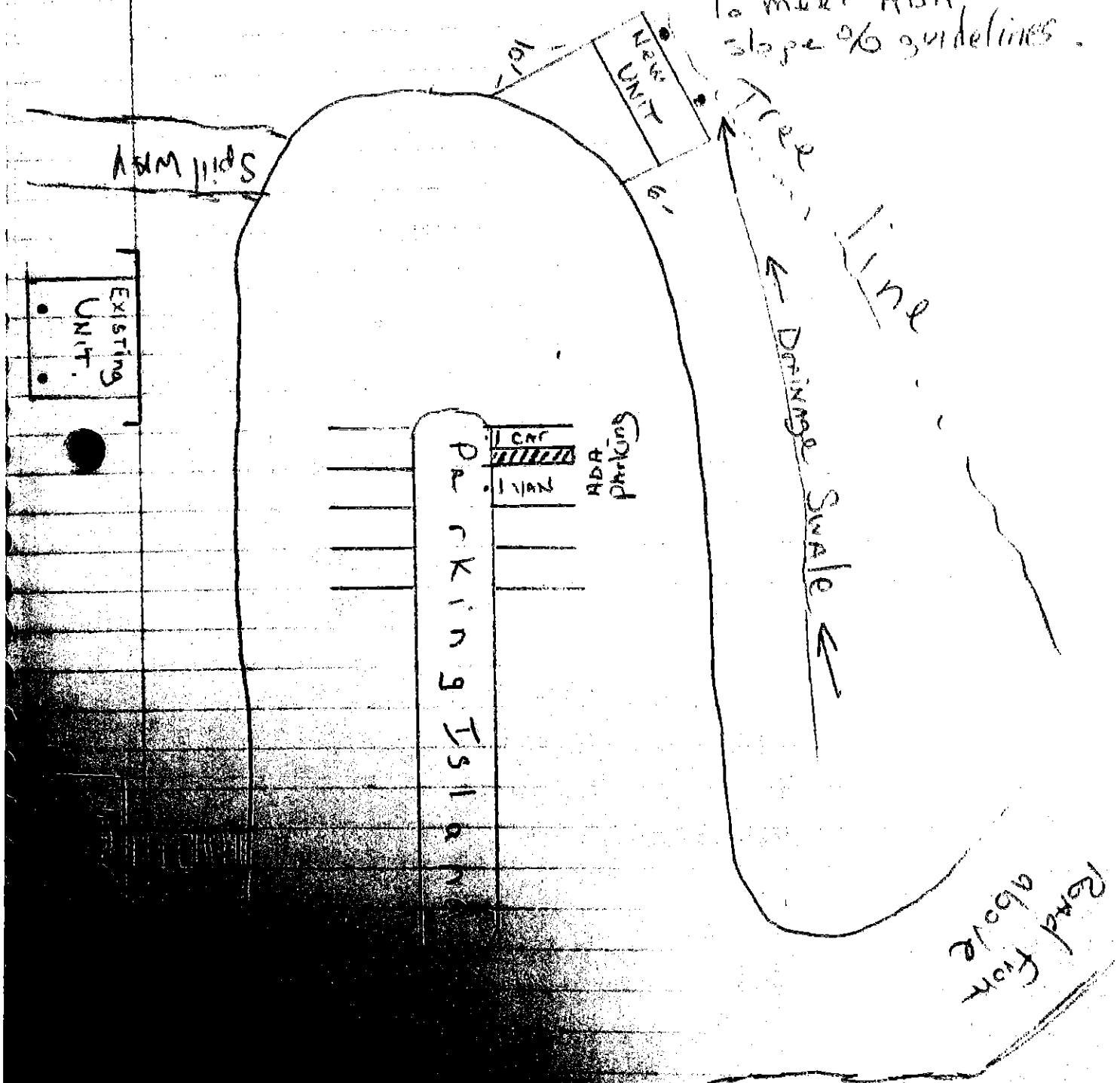


Not to scale

ADA Parking Striping/Signage.
Van + Aisle Car
11' - 5' - 8'

CPS- 39:161 x 86.2119
- bones old unit
- grass finish grade.
- Finish floor 15'
above asphalt surface
- front &
- Concrete approach
to meet ADA
slope % guidelines.

Site # 12 - Ogle Lake
Playground



NOT TO SCALE

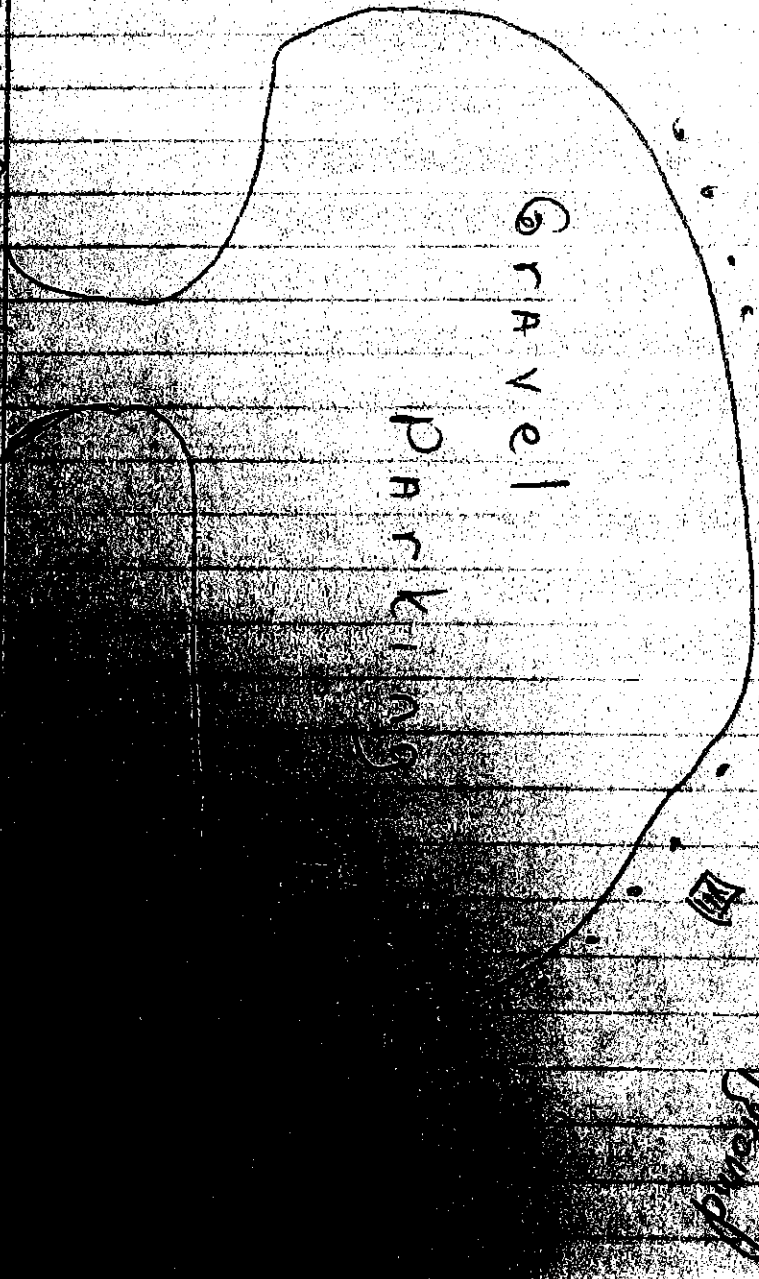
GPS - 39.167 x 86.242

Site # 13 - Tulip Tree Shelter

NOT TO SCALE

- Demo old unit
- grass finish grade
- Finish Floor 3' above gravel surface - front &
- Concrete approach to meet ADA Slope % guidelines.

MAIN ROAD



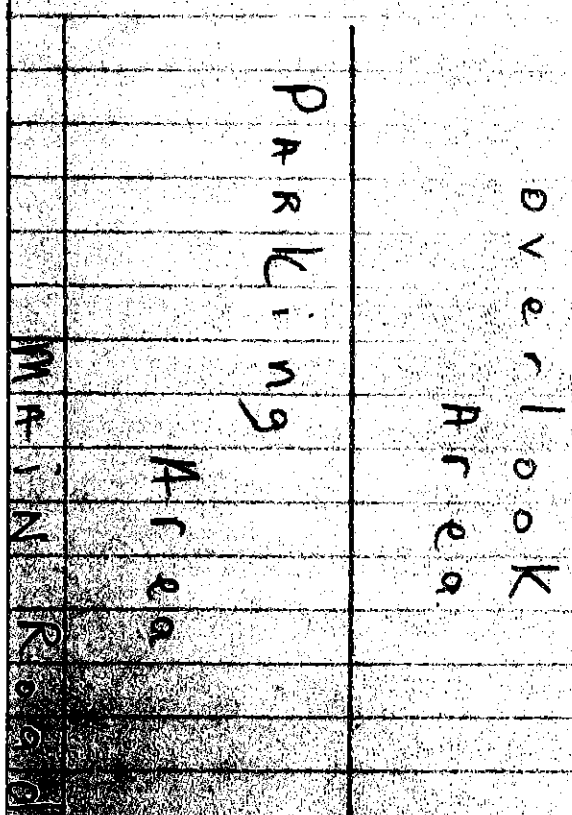
EXISTING UNIT

Shelter

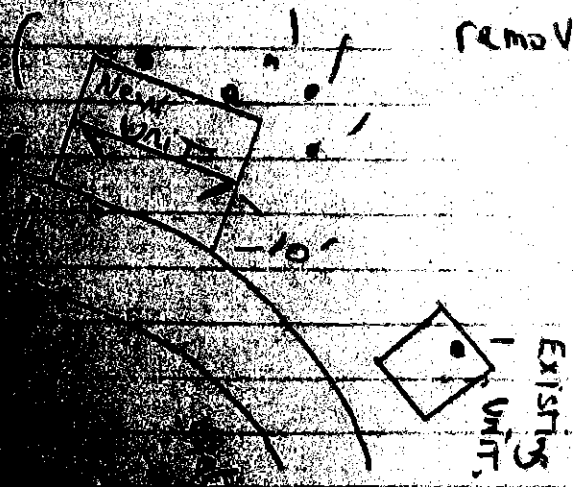
COPS - 39.169 x 89.236

- Demo old unit
- Mulch finish grade
- Finish Floor 3" above gravel surface
- front d.
- Concrete approach to meet ADA slope % guidelines.

Site # 14 - Hesitation Point



Various trees to be removed.

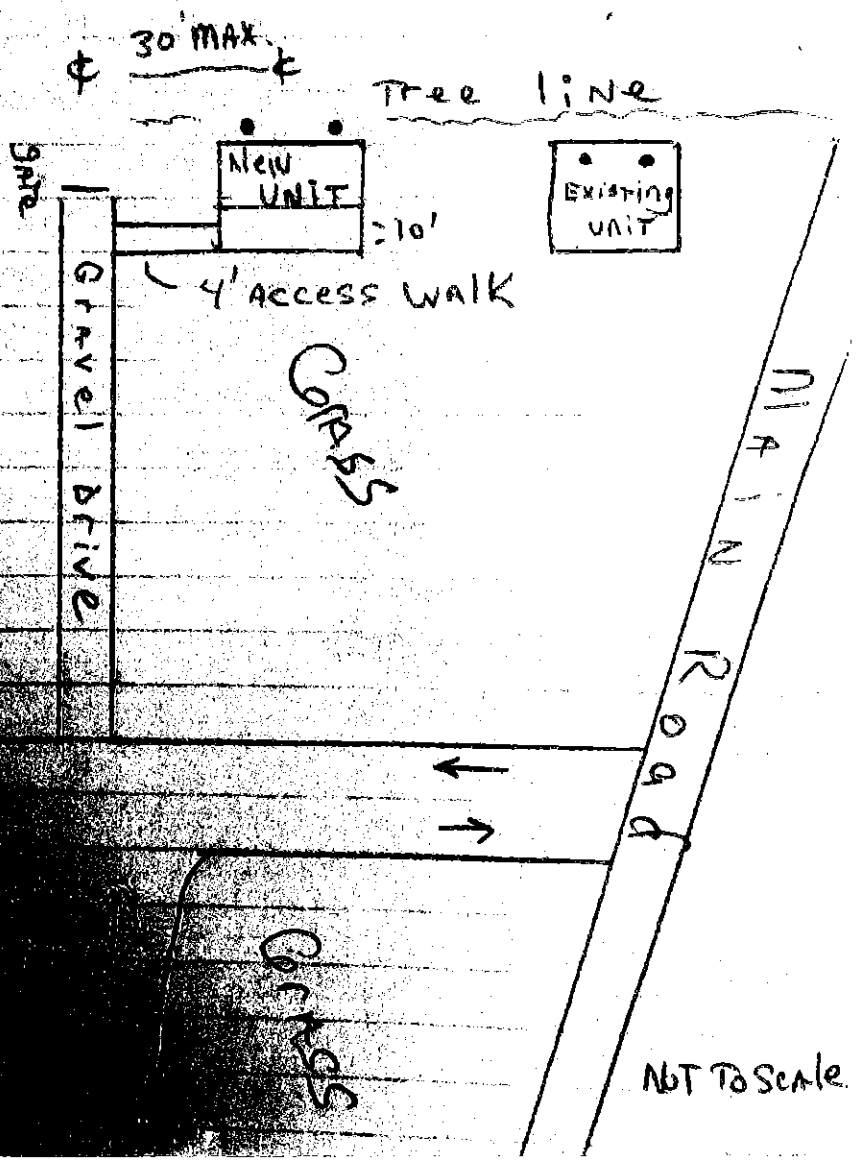


COPS - 39,190 & 86,215

- Demo old unit.
- grass finish grade

Site # 15 - Lower Shelter

- * - Finish Floor TBD at time of excavation.
- * - EXACT location TBD before excavation.
- Concrete approach to meet ADA slope % guidelines
- * Access to the unit to meet ADA slope % guidelines.



- NW corner
 of parking area
 39.13'

- gross seed finish grade
- Finished Floor
3" above
- Existing ground - 4

