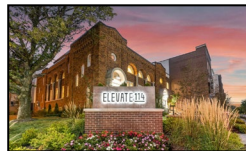


PROJECT EXPERIENCE (1984 to 2023)

G. Michael Patarino



MULTI-FAMILY & RESIDENTIAL

- **Steadman Apartments**, Carmel, IN, 3 & 5-story, 263 units
- **Treadway Apartments**, Gardner, KS, 3-story, 288 units
- **Nexus Apartments**, Noblesville, IN, 4-story, 287 units
- **FIFTEEN51 Apartments**, Lexington, KY, 4-story, 260 units
- **Elevate 114 Apartments**, Lee's Summit, MO, 4-story, garage, 273 units
- **The Otis at Fort Ben Apartments**, Lawrence, IN, 4-story, 261 units
- **Aria of Zionsville Apartments**, Zionsville, IN, 3-story, 218 units
- **Haven on Tucker Apartments**, Louisville, KY, 3-story, 18 bldgs., 370 units
- **Flats at Springhurst Apartments**, Louisville, KY, 5-story, garage, 249 units
- **Olivia on Main Luxury Residence & Shoppes**, Carmel, IN, 5-story, 204 units, 60 covered spaces, and 18,000 sf retail
- **Sophia Square Luxury Residence & Shoppes**, Carmel, IN; 5-story, 202 units, 404 space parking garage, and 45,000 sf retail
- **Madison Lofts Apartments**, Indianapolis, IN; 55 apartment units
- **Commonplace Apartments**, Englewood CDC, Indianapolis, Indiana; Renovation of the 1920's Lucretia Mott 3-story School into apartments (HUD funding)
- **McCurdy Apartments**, Evansville, Indiana; Preconstruction for renovation of an 8-story historic hotel into apartments
- **Valameda Estate Mansion**, Anchorage, Kentucky; 40,000 sf mansion
- **Chateau Apartments**, Muncie, Indiana
- **Holdeman Apartments**, Muncie, Indiana
- **Washington School Apartments**, Muncie, Indiana
- **Paragus Apartments**, Indianapolis, Indiana

EDUCATION (K12, Higher Education)

- **Butler University Parking Garage & Shoppes**, Indianapolis, IN, 6-story, 1,030 space parking garage with 16,000 sf of retail tenants
- **University Heights Preparatory Academy** (Charter School), Indianapolis, IN; 26,000 sf
- **New Community School** (Charter School), Lafayette, IN; 45,000 sf
- **Clark-Pleasant Middle School**, Whiteland, Indiana; 290,000 sf
- **Noblesville Intermediate School**, Noblesville, Indiana; 250,000 sf
- **Maple Grove Elementary**, Centergrove Schools, Bargersville, Indiana
- **Platte Valley High School**, Kersey, Colorado; 150,000 sf
- **Platte Valley Middle School Renovation**, Kersey, Colorado
- **Platte Valley Elementary School Addition and Renovation**, Kersey, CO
- **Thompson Middle School**, Loveland, Colorado; 210,000 sf
- **Creston Middle School**, MSD Warren Township, Indiana
- **Stonybrook Middle School**, MSD Warren Township, Indiana
- **Northside Elementary School**, Randolph Eastern, Indiana



- **Indianapolis University, Indoor Tennis Center**, Indiana
- **Butler University, Jordan Hall Renovation**, Indianapolis, Indiana
- **20+ Americans with Disability Studies for Indiana School Districts**

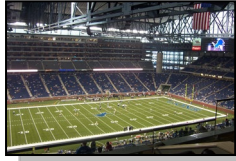


COMMERCIAL (Office, Retail, Tech, Sports, Hospitality, Parking, etc.)

- **The Illinois Building**, Indianapolis, IN; 10-story historic building renovation for 180 key Intercontinental hotel with 1st floor retail tenants
- **Butler University Parking Garage & Shoppes**, Indianapolis, IN, 6-story, 1,030 space parking garage with 16,000 sf of retail tenants
- **Battery Innovation Center**, Greene County, IN; 35,000 sf battery research, testing and innovation lab
- **NASL Indy Eleven Professional Soccer**, Carroll Stadium Renovation, Indianapolis, IN; 11,000 seat stadium with 12 suites and 8 concessions
- **Broad Ripple Garage & Shoppes**, 3-story, 350 space parking garage with 27,000 sf of retail tenants
- **Intech Three Office Building**, Indiana; 151,000 sf, 4-story, Design-Build
- **Meridian Corporate Plaza Two Office Building**, Indianapolis, Indiana; 135,000 sf, 4-story, Design-Build
- **Meridian Corporate Plaza Three Office Building**, Indianapolis, Indiana; 135,000 sf, 4-story, Design-Build
- **Midwest ISO Office Building and Connector Bridge**, Indiana; 3-story, 120,000 sf, Design-Build
- **MLB St. Louis Cardinals New Busch Stadium**, St. Louis, Missouri; 45,000 seats, 1.5M sf, Design-Build delivery; Sports Illustrated voted it in the Top 10 of the best sports stadiums of the last decade
- **NFL Detroit Lions Ford Field**, Detroit, Michigan; 65,000 seats, 1.82M sf
- **Marsh Corporate Headquarters**, Fishers, Indiana
- **Chemical Manufacturing and Support Facility C83**, Eli Lilly and Company, Clinton, Indiana
- **Yellow Freight Systems Office Building**, Indianapolis, Indiana
- **Kulwin Electric Warehouse and Office**, Indianapolis, Indiana
- Multiple Commercial Office **Tenant Finish Projects**, Indianapolis, Indiana
- **Kittles Warehouse and Corporate Headquarters**, Indianapolis, Indiana
- **Olive Garden, Red Lobster and China Coast** Prototype Restaurant Site Adaptations within 5-state region; General Mills Restaurants
- **Olive Garden** New Prototype Restaurant, Harrisburg, Pennsylvania

MEDICAL (Hospital and MOB)

- **Johnson Memorial Hospital**, Franklin, Indiana, 2-story 39,000 sf Surgical Addition and Renovation; BIM Project
- **Fairbanks Hall, IU Health Corporate HQ & IU Education and Resources Center**, Indianapolis, Indiana; 6-story 190,000 sf; Awarded 2009 Indiana NAIOP Best Office Project; included 31,000 sf fully operational hospital training center
- **Johns Creek Medical Pavilion**, Atlanta, Georgia; 90,000 sf, Design-Build



- **Imperial Point Medical Center**, Ft. Lauderdale, Florida; 60,000 sf, Design-Build
- **North Bay Medical Plaza**, New Port Richie, Florida; 45,000 sf (preconstruction)
- **Community Hospital of Anderson**, Medical Office Building, Anderson, Indiana
- **Dr. Nowacowski DDS**, Dr. Clark DDS Office, Muncie Indiana
- **Madison State Hospital Renovation**, Indiana



FEDERAL & GOVERNMENT

- **Birch Bayh Federal Building and U.S. Courthouse**, GSA, Indianapolis, Indiana; Modernization Project of the 105-year old historic building (MEP/life safety upgrades, green roof, rainwater harvesting); LEED and ARRA project
- **Major General Emmett J. Bean Federal Center**, GSA, Lawrence, Indiana; Renewable Energy Project (2MW rooftop solar energy system with 6,152 solar panels, DoE solar testing lab with 5 different solar technologies, solar hot water heating systems, and an R-50 IRMA re-roof); LEED, ARRA and BIM Project
- **Johnson County Armed Forces Reserve Center**, Franklin, Indiana; 168,000 sf, 2-story; LEED Project; including 500,000 sf concrete paved MV area
- **Lawrence Armed Forces Readiness Center**, Lawrence, Indiana; 110,000 sf, 2-story; LEED Project
- **Camp Atterbury Directorate of Public Works Buildings**, Edinburgh, Indiana; multiple administrative and maintenance buildings; LEED Project
- **Stout Field Building 5, Armed Forced Reserve Center**, Indianapolis, Indiana; Renovation of historic air traffic control tower into AFRC
- **Camp Atterbury State Military Academy and Barracks**, Edinburgh, Indiana
- **Awarded 5-Year Region Wide IDIQ Contract**, GSA Great Lakes Region (CMc projects between \$15M and \$75M); first of its kind contract with GSA
- **Awarded 5-Year IDIQ Contracts**, GSA Great Lakes Region, Ohio (all 3 regions) and Central/Southern Indiana for small projects



JUSTICE & PUBLIC SAFETY

- **Lookout Mountain Youth Services Center**, Golden, Colorado; Renovation of three youth dormitory buildings
- **Lookout Mountain Youth Services Center**, Golden, Colorado; Renovation of six historic campus buildings into education, vocational, and office facilities
- **Hamilton County Jail and Sheriff's Office**, Fishers, Indiana