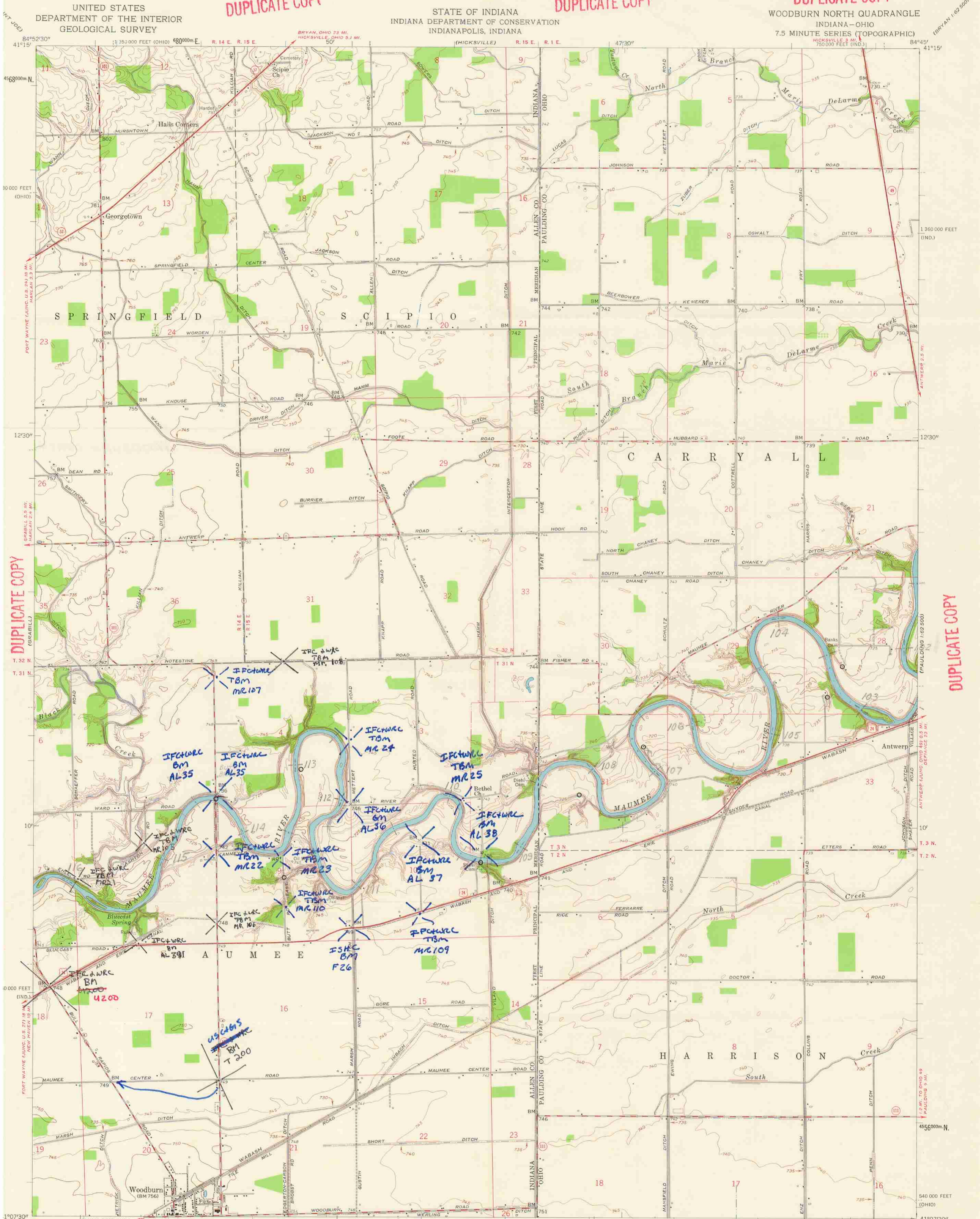


DUPLICATE COPY

DUPLICATE COPY

DUPLICATE COPY



DUPLICATE COPY

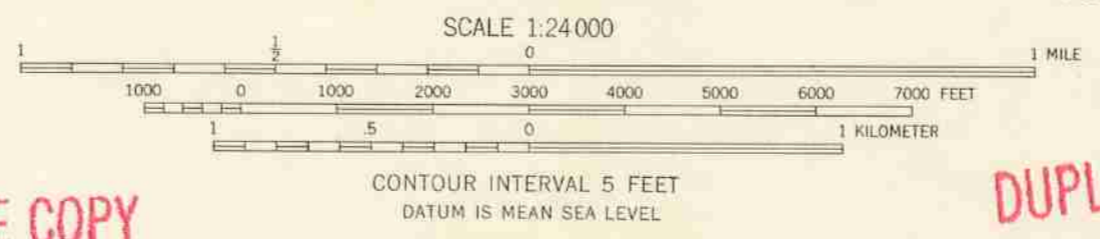
DUPLICATE COPY

DUPLICATE COPY

DUPLICATE COPY

DUPLICATE COPY

Mapped, edited, and published by the Geological Survey
Control by USGS, USC&GS, and Indiana Flood Control and
Water Resources Commission
Culture and drainage in part compiled from aerial photographs
taken 1951. Topography by planetable surveys 1958
Polyconic projection, 1927 North American datum
10,000-foot grid based on Indiana coordinate system, east zone,
and Ohio coordinate system, north zone
1000-meter Universal Transverse Mercator grid ticks,
zone 16, shown in blue
Land lines in Ohio based on the First Principal Meridian
APPROXIMATE MEAN
DECLINATION, 1958



ROAD CLASSIFICATION

Heavy-duty	Light-duty
Medium-duty	Unimproved dirt
U.S. Route	State Route

THIS MAP COMPLIES WITH NATIONAL MAP ACCURACY STANDARDS
FOR SALE BY U. S. GEOLOGICAL SURVEY, WASHINGTON 25, D. C.
AND INDIANA DEPARTMENT OF CONSERVATION, INDIANAPOLIS, INDIANA
A FOLDER DESCRIBING TOPOGRAPHIC MAPS AND SYMBOLS IS AVAILABLE ON REQUEST

WOODBURN NORTH, IND.—OHIO
N4107.5—W8445.7.5

1958