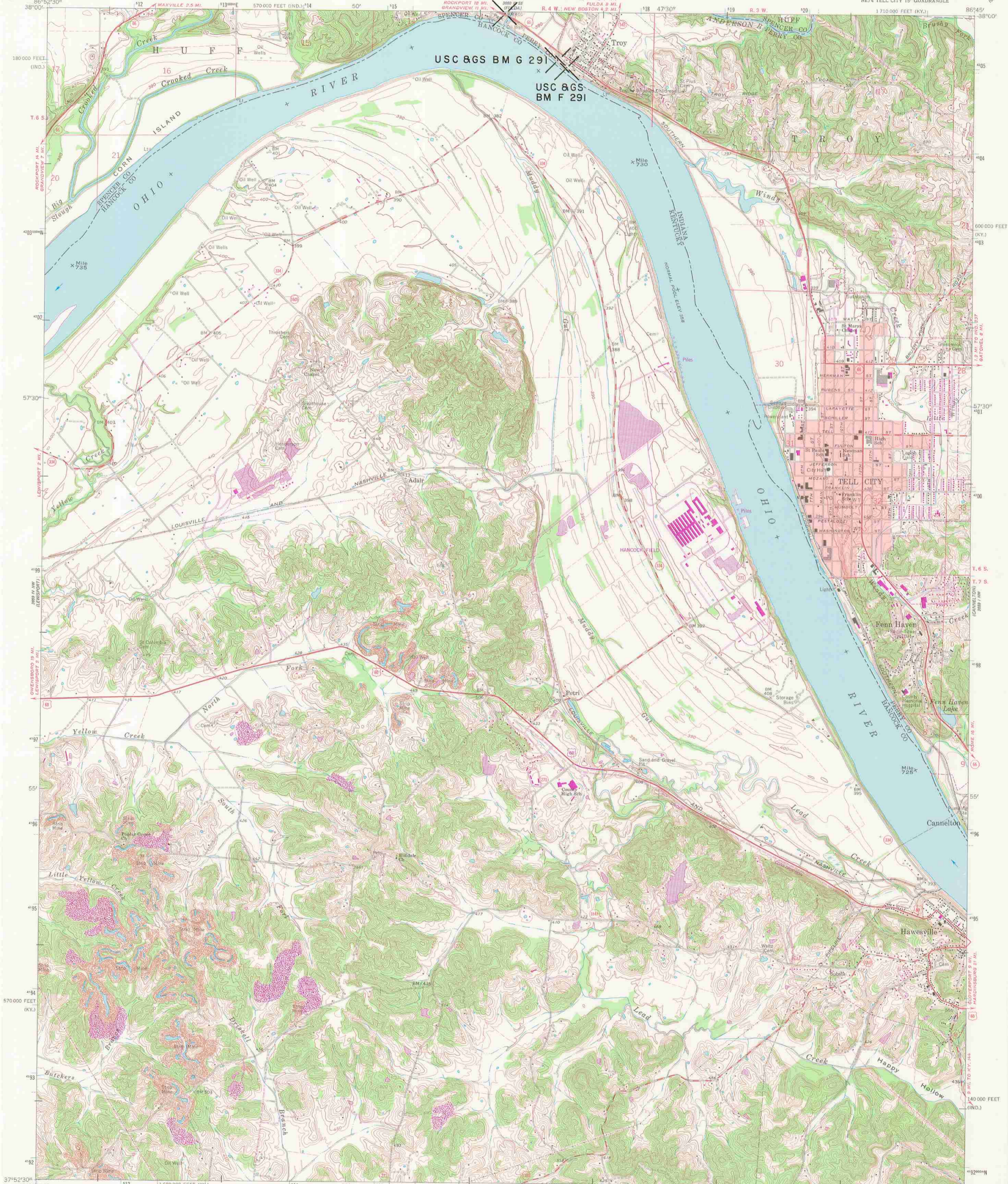


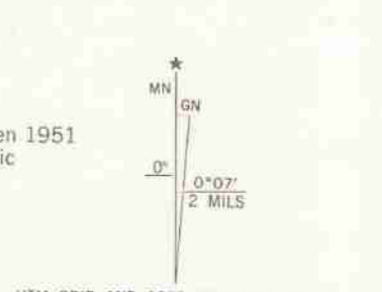
ISHC BM V 127 SPR

USC & GS BM G 291

USC & GS
BM F 291



Maped, edited, and published by the Geological Survey in cooperation with State of Kentucky Geological Survey and State of Indiana Department of Conservation Control by USGS, USC&GS, and USCE
Topography in Kentucky by photogrammetric methods from aerial photographs taken 1951. Field checked 1953. Revised 1961. Topography in Indiana by photogrammetric methods from aerial photographs taken 1958. Field checked 1961
Polyconic Projection
10,000-foot grids based on Kentucky coordinate system, south zone and Indiana coordinate system, west zone
1000-meter Universal Transverse Mercator grid ticks, zone 16, shown in blue. 1927 North American Datum
To place on the predicted North American Datum 1983 move the projection lines 3 meters south as shown by dashed corner ticks
The state boundary as shown represents the approximate position of the low water line as determined from U.S. Corps of Engineers Ohio River charts, surveyed 1912, and supplementary information
Red tint indicates areas in which only landmark buildings are shown



SCALE 1:24,000
CONTOUR INTERVAL 10 FEET
NATIONAL GEODETIC VERTICAL DATUM OF 1929

THIS MAP COMPLIES WITH NATIONAL MAP ACCURACY STANDARDS FOR SALE BY U. S. GEOLOGICAL SURVEY, RESTON, VIRGINIA 22092, INDIANA DEPARTMENT OF NATURAL RESOURCES, INDIANAPOLIS, INDIANA 46204, KENTUCKY GEOLOGICAL SURVEY, LEXINGTON, KENTUCKY 40506, AND KENTUCKY DEPARTMENT OF COMMERCE, FRANKFORT, KENTUCKY 40601 A FOLDER DESCRIBING TOPOGRAPHIC MAPS AND SYMBOLS IS AVAILABLE ON REQUEST

ROAD CLASSIFICATION

Heavy-duty	Light-duty
Medium-duty	Unimproved dirt
U.S. Route	State Route



Revisions shown in purple compiled in cooperation with State of Indiana agencies from aerial photographs taken 1978 and other source data. Contours adjusted adjacent to certain photorevised hydrographic features. This information not field checked
Map edited 1980

TELL CITY, IND.-KY.
NE/4 TELL CITY 15' QUADRANGLE
N 3752.5-W 8645.7.5
1961
PHOTOREVISED 1980
DMA 5659 IV NE-SERIES V853