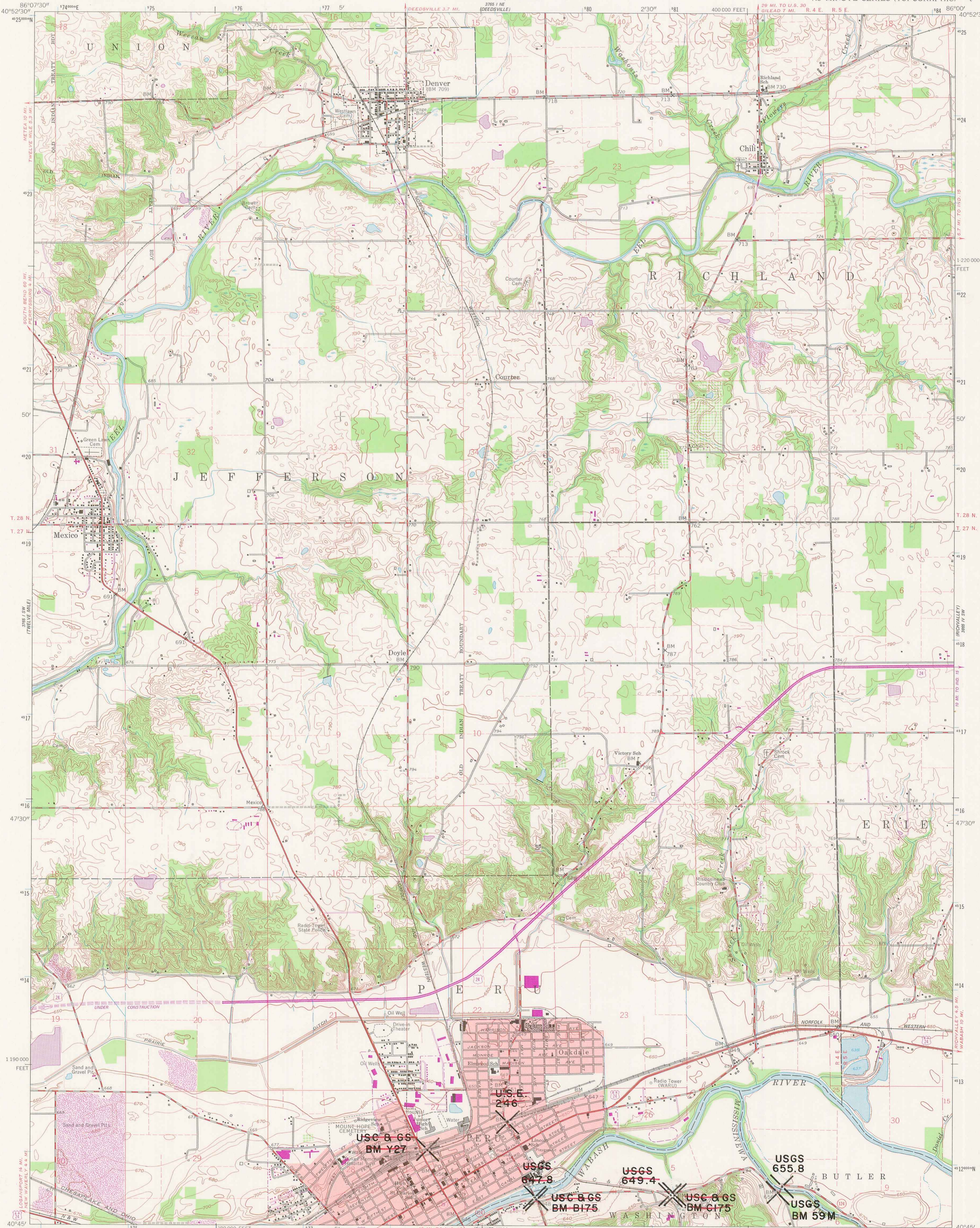
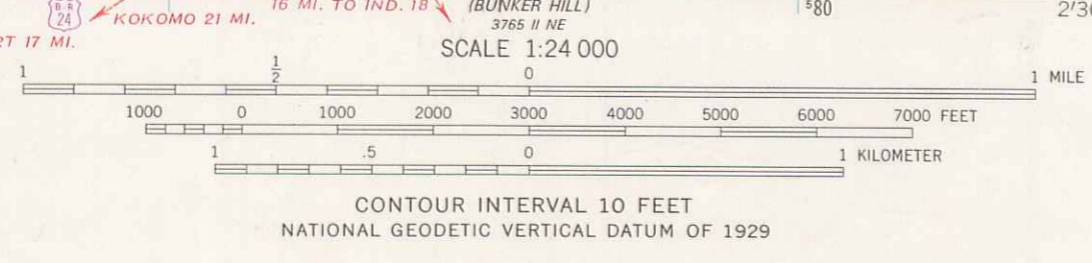


DUPLICATE COPY



Mapped, edited, and published by the Geological Survey
Control by USGS, NOS/NOAA, and USCE
Planimetry by photogrammetric methods from aerial photographs taken 1948. Topography by planimetric surveys 1949. Revised 1960
Polyconic projection. 10,000-foot grid based on Indiana coordinate system, east zone
1000-meter Universal Transverse Mercator grid ticks, zone 16, shown in blue. 1927 North American Datum
No adjustment is necessary to place this map on the predicted North American Datum 1983
Fine red dashed lines indicate selected fence and field lines where generally visible on aerial photographs. This information is unchecked
Red tint indicates areas in which only landmark buildings are shown
Revisions shown in purple compiled in cooperation with State of Indiana agencies from aerial photographs taken 1977 and other source data. This information not field checked. Map edited 1980

DUPLICATE COPY



DUPLICATE COPY



THIS MAP COMPLIES WITH NATIONAL MAP ACCURACY STANDARDS
FOR SALE BY U. S. GEOLOGICAL SURVEY, RESTON, VIRGINIA 22092
AND INDIANA DEPARTMENT OF NATURAL RESOURCES, INDIANAPOLIS, INDIANA 46204
A FOLDER DESCRIBING TOPOGRAPHIC MAPS AND SYMBOLS IS AVAILABLE ON REQUEST



PERU, IND.
N4045—W8600/7.5
1960
PHOTOREVISED 1980
DMA 3765 1 SE—SERIES V851