

A DIVERSITY OF TRAILS

All horsemen's trails are clearly marked with the appropriate letter (A, B, C, etc.) or number (1, 2, 3, etc.). All markers are located along the right hand side of the trails as you are riding away from the beginning point of the trail. This marking system will enable a rider to determine the direction which he is riding on a trail. A rider riding away from the beginning point of a trail will see the markers on his right, and a rider riding towards the beginning point of a trail will see the markers on his left.

The following are brief descriptions of those trails that are authorized for horsemen use at Brown County State Park.

Trails A-J are wide and may be ridden two abreast.

TRAIL A 6.5 miles

The trail begins at Green Horn shelter near the campground registration gatehouse. A five-mile ride over terrain leads to Weed Patch Hill, site of the state park fire tower. A return trip of two miles follows Skinner Creek back to the west end of the horsemen's camp.

TRAIL A1 1.5 miles

You will notice an intersecting trail labeled A-1. This trail intersects the upper and lower loop of Trail A for those wishing to take a shorter ride.

TRAIL B 10.9 miles

The trail begins at three different marked trail heads along the south side of the horsemen's camp. A four-mile ride over varying terrain leads to a loop of approximately six miles. This portion of the trail provides some of the most challenging hills and scenic views to be found on the horse trail system at Brown County. Trail elevation varies from a height of nearly 950 feet above sea level on Talyor Ridge to a low of approximately 604 feet along Little Blue Creek.

TRAIL C 4.4 miles

This trail serves as an extension of the Trail B loop. Trail C begins at approximately mile six of Trail B, just south of Taylor Ridge. It continues for a distance of nearly four miles west along Taylor Ridge and south through Bales Hollow and rejoins Trail B at the intersection with Little Blue Creek. Trail C falls steadily from a high elevation of almost 1,000 feet near it's beginning to a low of approximately 625 feet at its end.

TRAIL D 7.4 miles

Co-op: This trail is marked and opened to horsemen through the cooperative efforts of the Department of Natural Resources, United States Forest Service and the Indiana Trail Riders Association. It is situated largely along Miller Ridge through the Hoosier National Forest. Trail D begins between mile one and two of Trail C and serves as a six-mile further continuation of the trails B and C loop for those who wish an experience in long distance riding. A continuation ride of the trails B, C and D loop from the horsemen's camp back to the horsemen's camp will cover nearly 20 miles and involve several hours.

TRAIL E 2.8 miles

This trail begins near mile two of Trail B and continues for approximately two miles along a ridge trail to the little town of Story. An historic marker explaining the old Indian treaty line can be found at trail end.

TRAIL F 1.8 miles

This trail begins near mile one of Trail A and after crossing the park boundary onto private property ends at a general store located on State Road 135, just east of the entrance to the horsemen's camp.

TRAIL G 6.6 miles

This trail is maintained through the joint efforts of the Department of Natural Resources and the Indiana Trail Riders Association. It follows the long-established Ten O'clock Line trail beginning near mile one of Trail C and ending approximately 12 miles west at Yellowwood Lake and Yellowwood State Forest. Those segments of Trail G situated off of Brown County State Park are marked and maintained solely by the Indiana Trail Riders Association.

Note: Due to a bridge closing, Trail G stops approximately two miles from the park boundary.

TRAIL H 2.9 miles

This trail is maintained jointly by the Department of Natural Resources and the Indiana Trail Riders Association. It originated as an experiment to determine if additional trails could be opened and maintained by the DNR and ITRA without the use of bulldozers. Trail H begins on the southern most Trail B trail head leaving horsemen's camp and runs in a southwest direction across hills and ravines until it intersects with Trail E just south of Trail B.

TRAIL I 1.4 miles

Opened in conjunction with Trail H, Trail I is also a narrow trail, running in a north-south direction from approximately the halfway point of Trail H and up to Trail B.

TRAIL J 3.2 miles

Beginning on the northeast side of the paved campground road just up from the modern restrooms, Trail J climbs to the top of a ridge where it splits in two directions. For a shorter ride, the right or south fork runs down the ridge to connect with Trail A, near the Green Horn Shelter. The left or north fork leads up the ridge to join Trail A, just south of Five Points.

Trails 1-18 are narrow and must be ridden single file.

TRAIL 1 .3 miles

A shorter trail that goes through a clearing and past a pond before coming out on a trail just past Trail F.

TRAIL 2 .9 miles

This beautiful trail goes up the valley crossing the creek many times, climbs the hill and comes out on Trail A, just before Trail J.

TRAIL 3 .7 miles

This trail starts about halfway up Trail A-1 and follows the ridge till it connects with Trail A.

TRAIL 4 .8 miles

This trail starts about halfway up Trail A-1 and goes up the valley and comes out on Trail A, just before Trail A splits and goes to the firetower.

TRAIL 5 1.1 miles

1.1 miles. A beautiful, easy ridge trail.

TRAIL 6 1.7 miles

This trail starts on the Trail B on the ridge, above the primitive campground. It follows the ridge, drops into a valley and crosses Trail H at the creek. Then goes back up the hill and comes out on Trail I.

TRAIL 7 .7 miles

Starting out on Trail H just above the Horsemen's camp, this is a cool, pleasant valley trail that goes past the foundation stones of a homestead cabin before climbing the hill and coming out on Trail B, just off the road.

TRAIL 8 .4 miles

This trail starts off of Trail 7, just after it drops into the valley. It then follows a ridge and comes out on Trail I.

TRAIL 9 .7 miles

This trail follows an old roadbed for awhile then drops into a valley before coming out on Trail H.

TRAIL 10 .4 miles

This trail starts out on Trail H at the far end of the valley from Trail 9. It wanders through some beautiful pine trees before coming out on Trail 11.

TRAIL 11 1.4 miles

This trail also follows an old roadbed along a ridge, then crosses a valley and comes out on Trail E about halfway to Story.

TRAIL 12 .5 miles

Starting just a short distance down Trail E, this trail follows a ridge before dropping into the valley and joining Trail B just before the picnic tables on Trail B.

TRAIL 13 1.5 miles

This trail goes off of Trail B, just past Trail 7, drops into a valley, touches and goes around the end of a ridge and back up another valley before climbing to a ridge and following it to the picnic tables on Trail B.

TRAIL 14 2.5 miles

This is a very beautiful ridge and valley trail. It starts up a ridge off of Trail B and comes back down the next valley and joins back up with Trail B just past Trail 15.

TRAIL 15 2.8 miles

This trail starts off of Trail 14, and follows a ridge to a pond, just off of Trail B and follows Trail B for a short distance, turns off and follows a ridge before the picnic tables on the Little Blue Creek.

TRAIL 16 3.6 miles

This trail follows an old roadbed off of the Trail B, then drops into the valley and crosses Trail D, just past the picnic tables. It then climbs back up to a ridge and follows this ridge to some pine trees on the back side of Trail D. Pack a lunch, the pine trees are a beautiful place to relax and eat lunch.

TRAIL 17 2 miles

Starts at Five Points and follows an old fire trail near the east park boundary. Trail turns southward, drops down into a valley and passes through a site where sandstone was quarried to build some of the original parks buildings. Trail crosses ridges and gullies with Trail F.

TRAIL 18 .8 miles

Trail follows and old roadbed from Five Points to its intersection with Trail 17 near an old stone quarry.

BROWN COUNTY STATE PARK

HORSE TRAILS



LOOK TO THE FUTURE

More than 80 percent of the nation's population resides in urban areas and Americans are seeking trail opportunities as never before. Horseback riders have increased to 17 million nationally from to 7.8 million in 1960, making it one of the fastest growing forms of recreation.

The critical task today is to make decisions that will determine the long-term fate of essential resources. At the same time, the growing population of outdoor enthusiasts visiting the State Park System's 57,000 acres require increased recreation and educational opportunities.

Just as trails benefit all, the responsibility for trail planning, development and maintenance must also be shared. The Indiana Trail Riders Association has joined the Department of Natural Resources to share these responsibilities and ask for your cooperation and help in preserving our park for use by future generations of trail riders. Please stay on the marked trails and "Pack Out what you Pack In". Brown County State Park showcases the grandeur of Indiana's natural beauty with its miles of hilly trails. Let's keep our park clean and beautiful.

This map is prepared jointly by the
INDIANA DEPARTMENT OF NATURAL RESOURCES
and the **INDIANA TRAIL RIDERS ASSOCIATION, INC.**

HORSEMEN'S CAMP & TRAIL RULES

In order to make your visit most enjoyable and at the same time to provide the maximum degree of safety for you and for our other guests, we ask that you observe the following rules while you are in the park:

- Horse Trail Permits must be purchased for all horses entering Brown County State Park from April 1 thru November 30. Riders must carry a permit for each horse while it is being ridden on the Brown County State Park horse trail system. Annual Horse Tags are valid from January 1, until December 31 of the year issued.
- The park is open from 7:00 am through 11:00 pm. Quiet hours are to be observed after 11:00 pm, as a courtesy to our other park guests. Campers will not be permitted to set up their camp in the regular campground after midnight, also as a courtesy to other campers. Horsemen campers arriving after midnight will be permitted to camp in the day use area for the care of their horses after traveling long hours. They are to stay in this area until 7:00 am at which time they will be permitted to move into the main campground. If no campsites are available for the following day or no space is available in the day use area, no overnight provisions will be provided.
- Please limit your riding to the marked trails found within Brown County State Park and also, Trail D loop and Trail G which are located outside the park boundaries. It is important to stay on the marked trails to help prevent erosion because soils found within Brown County State Park are highly erodible.
- Only hitch your horses at the designated areas.
- Only one mode of transportation is permitted per campsite. One additional tow vehicle is permitted but it must remain hooked to towed equipment at all times.
- Advise all visitors that they will have to park their cars in the visitor's parking lots located at each end of the horsemen's camp and walk to your site.
- Dogs, cats or other pets must be kept on a leash no longer than 6 feet in length, or caged and they must be attended at all times.
- Horses must be ridden at a walk while in the campground.
- Please clean up before you leave. Manure bins are provided for your convenience.

CENTRAL RESERVATION SYSTEM



Reservations for all types of camping, family cabins, and shelters at state parks, reservoirs and forests can be made online or by calling toll-free.
Call: 1-866-6campIN (1-866-622-6746)
Online: camp.IN.gov

FOR MORE INFORMATION

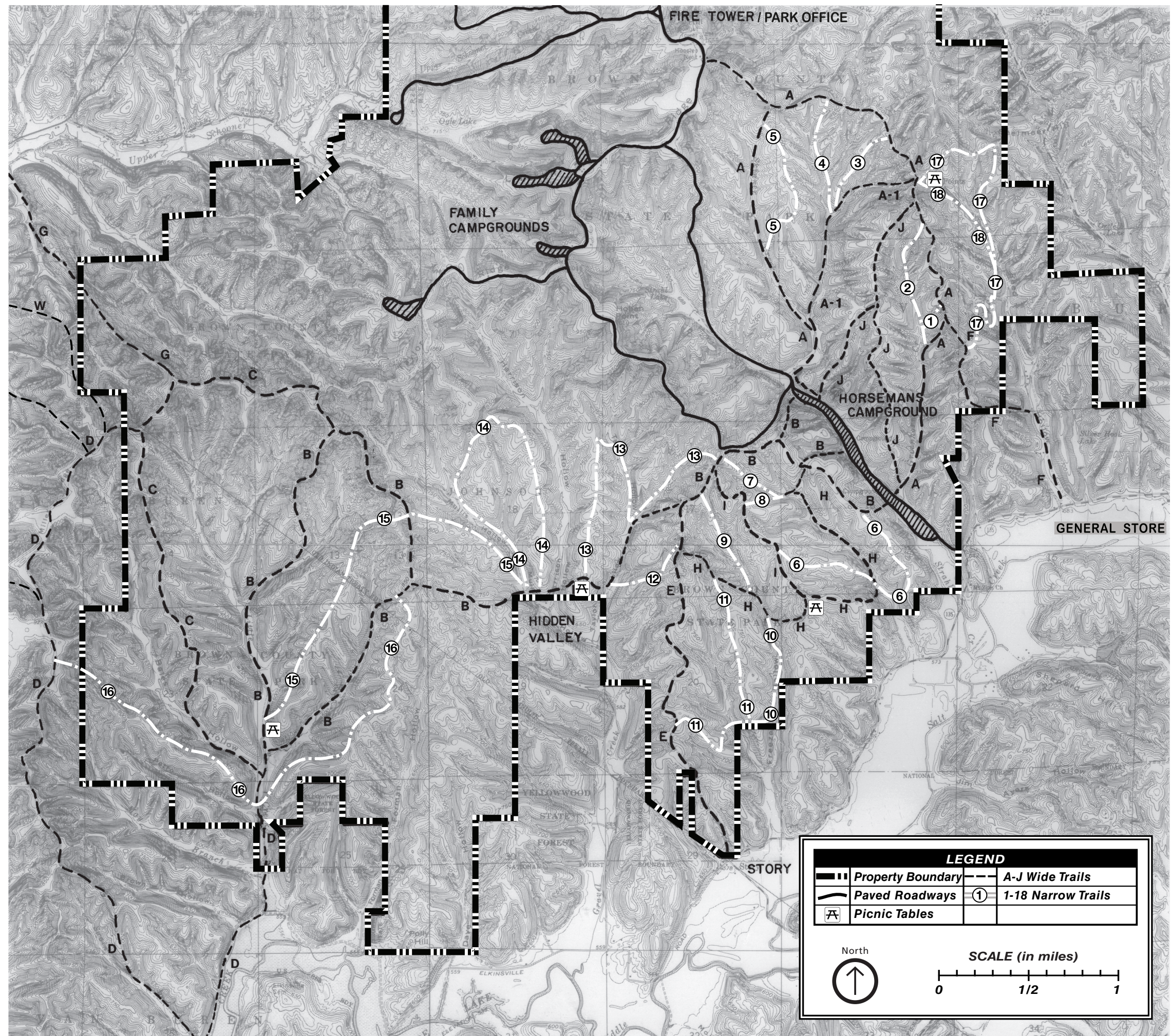


Write: Brown County State Park
4800 S.R. 135 S.
Nashville, IN 47448
Call: (812) 988-6406
Online: stateparks.IN.gov/2970.htm

NEED ASSISTANCE DURING YOUR STAY?

Please contact the park office, gatehouse or other DNR personnel.

Horsecamp Gatehouse: (812) 988-5235
Dial 911 for all emergencies.



LEGEND	
	Property Boundary
	A-J Wide Trails
	Paved Roadways
	1-18 Narrow Trails
	Picnic Tables

North

 SCALE (in miles)