

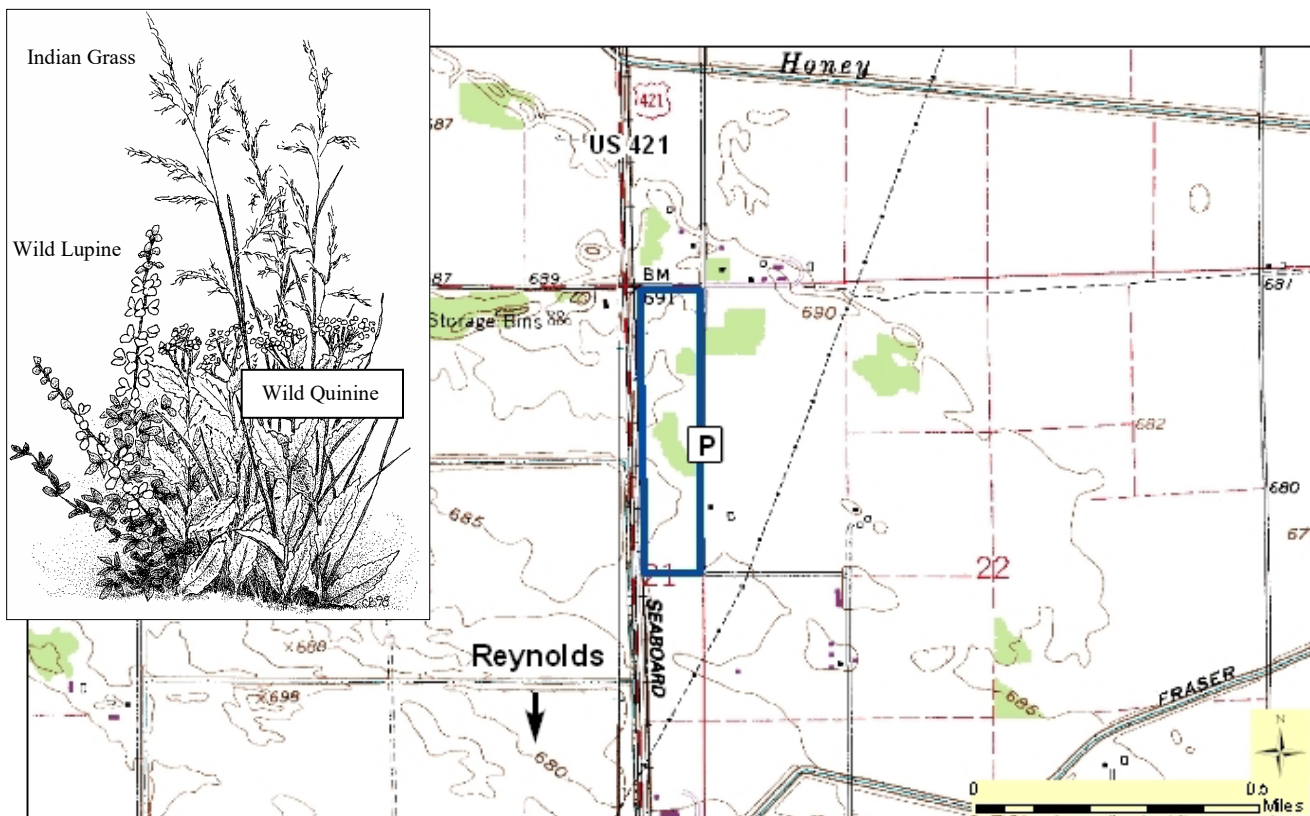
Spinn Prairie Nature Preserve

County: White Size: 29 acres
Ownership: The Nature Conservancy
Parking: 40.7777, -86.87225



Location and Access

No parking, no trail. From Lafayette, take SR 43 north about 16 miles to Reynolds (at Reynolds SR 43 becomes US 421). From the US 421-SR 24 intersection in Reynolds, continue north on US 421 for 2 miles. Turn right. Go about 0.2 mile to a T-junction and turn right. The prairie is on your right. Park anywhere along the road.



Description: By Indiana standards, Spinn Prairie is a relatively large remnant of the tallgrass prairie community. The nearly level topography is deceptive since wet swales dominated by cordgrass are scattered here and there on the property. The higher areas contain both mesic prairie, dominated by big bluestem and Indian grass, and oak savannas, with black and white oaks. Although the savannas are degraded, restoration efforts will improve their quality over the years. The mesic prairie contains numerous typical prairie species such as blazing star, wild white indigo, prairie dock, rattlesnake master, downy sunflower, and many others.

Further Information:

The Nature Conservancy, Efroymsen Conservation Center, 620 E. Ohio St, Indianapolis, IN 46202.

(317) 951-8818. www.nature.org

Division of Nature Preserves Central Regional Ecologist, Danielle Williams: dpwilliams@dnr.IN.gov