

Seidner Dune and Swale Nature Preserve

County: Lake

Size: 42 acres

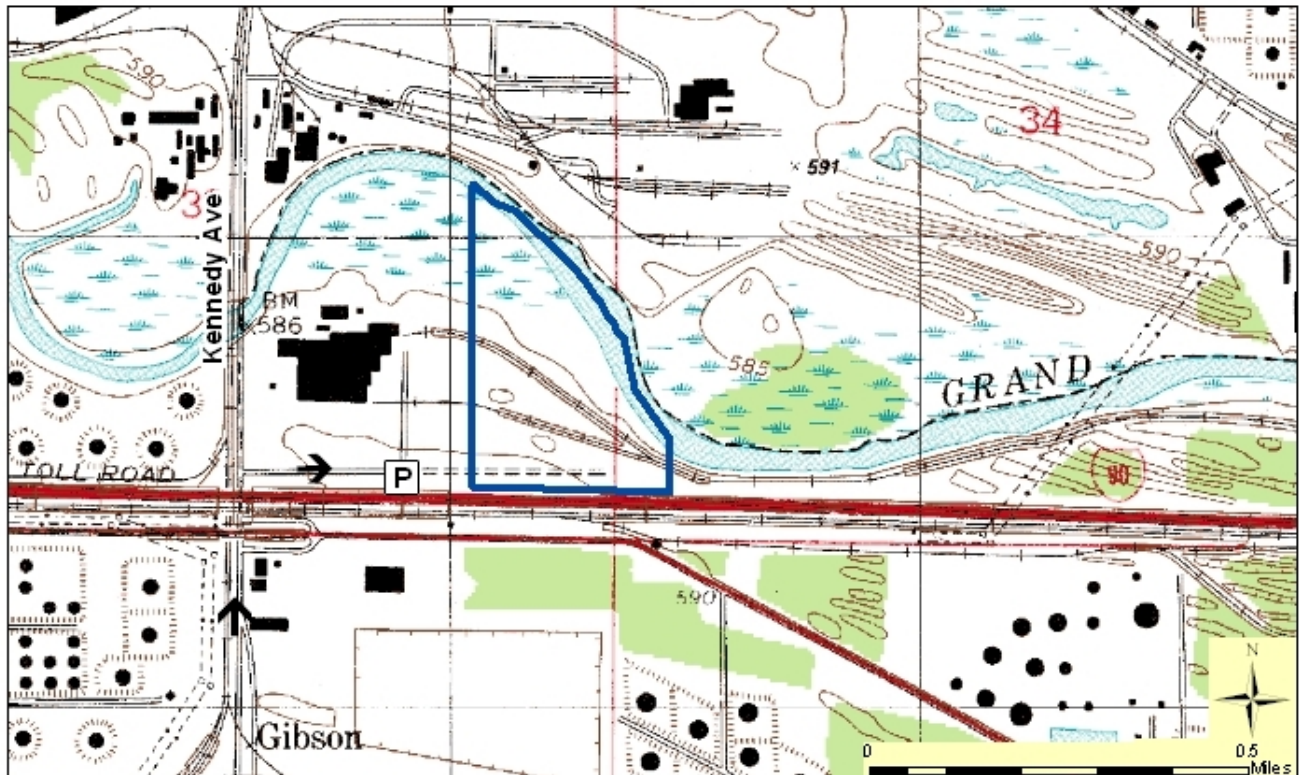
Ownership: Shirley Heinze Land Trust



Location and Access

No parking lot. Trails with level grade and gravel surface – moderate difficulty.

From I-80/94 or US 20, take Kennedy Ave. north. Immediately after passing under the Indiana Toll Road (I-90) overpass, turn right (east) onto the first (unnamed) road, which leads to the back entrance of the neighboring RESCO plant. At the turn in the road, park along the edge of the road and enter on foot through either side of the locked gate. Continue 0.4 miles on the gravel road that leads east, parallel to the Toll Road. A 0.8 mile loop trail on the old, regraded railroad beds can be used to traverse the property.



Description: This preserve, which features “dune and swale” topography and associated wetlands and oak savanna, lies along the Grand Calumet River. A floodplain marsh on the north portion of the preserve has been remediated and restored. The site was included in a USEPA project that dredged the highly contaminated river and capped the riverbed to prevent further contamination. Nearly 300 species of plants have been identified on the site, including several rare species that have strict habitat requirements. Notable plants include wild lupine, harebell, fringed gentian, blue-flag iris, white wild indigo, side-oats grama grass, prairie lily, blazing star and many others. This site also offers good opportunities for birdwatching. The dune and swale habitat and the river attract a wide variety of wading birds and waterfowl. During winter, the open waters of the river attract many species of overwintering waterfowl. Eagles, hawks and falcons are frequently observed hunting along the river. The site is managed by Shirley Heinze Land Trust in partnership with The Nature Conservancy to maintain biological diversity and to preserve the fire dependent communities that occur here.

Further Information:

Shirley Heinze Land Trust, 109 West 700 North Valparaiso, IN 46385. 219-242-8558. www.heinzetrust.org
Division of Nature Preserves Grand Calumet Regional Ecologist, Emily Stork: estork@dnr.IN.gov Indiana Department of Natural Resources