

**POWER OF THE PLATE**

Since 1993 more than 1 Million Hoosiers have purchased or renewed environmental license plates. The money has been used to protect more than 60,000 acres in 60 counties including portions of the Knobstone Trail.

The Knobstone Trail is supported by federal grants including the Recreational Trails Program and the Land & Water Conservation Fund.

**OUR MISSION**

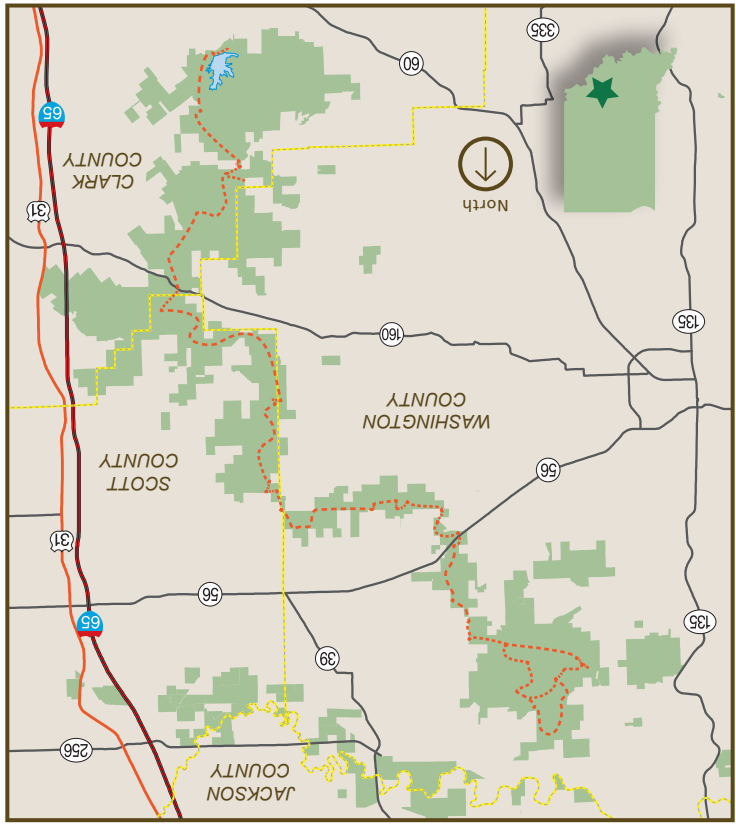
The Indiana Department of Natural Resources Division of Forestry promotes and practices good stewardship of natural, recreational and cultural resources on Indiana's public and private forest lands. This stewardship produces continuing benefits, both tangible and intangible, for present and future generations.

**STATE FOREST MANAGEMENT POLICY**

State Forests are "working and research" forests. They are managed under a multiple-use policy to provide renewable wood products, watershed protection, wildlife habitat diversity, recreation opportunities and conservation of unique resources. The growth and harvest of renewable timber is a primary outcome of these working forests. Growth and harvest are guided by professional foresters in a manner that promotes long-term forest health, productivity and diversity of habitats, and makes important contributions to the state and local economy.

Division of Forestry  
402 W. Washington St.  
Indianapolis, IN 46204-2782  
317-232-4105 | [dnr.IN.gov/forestry](http://dnr.IN.gov/forestry)

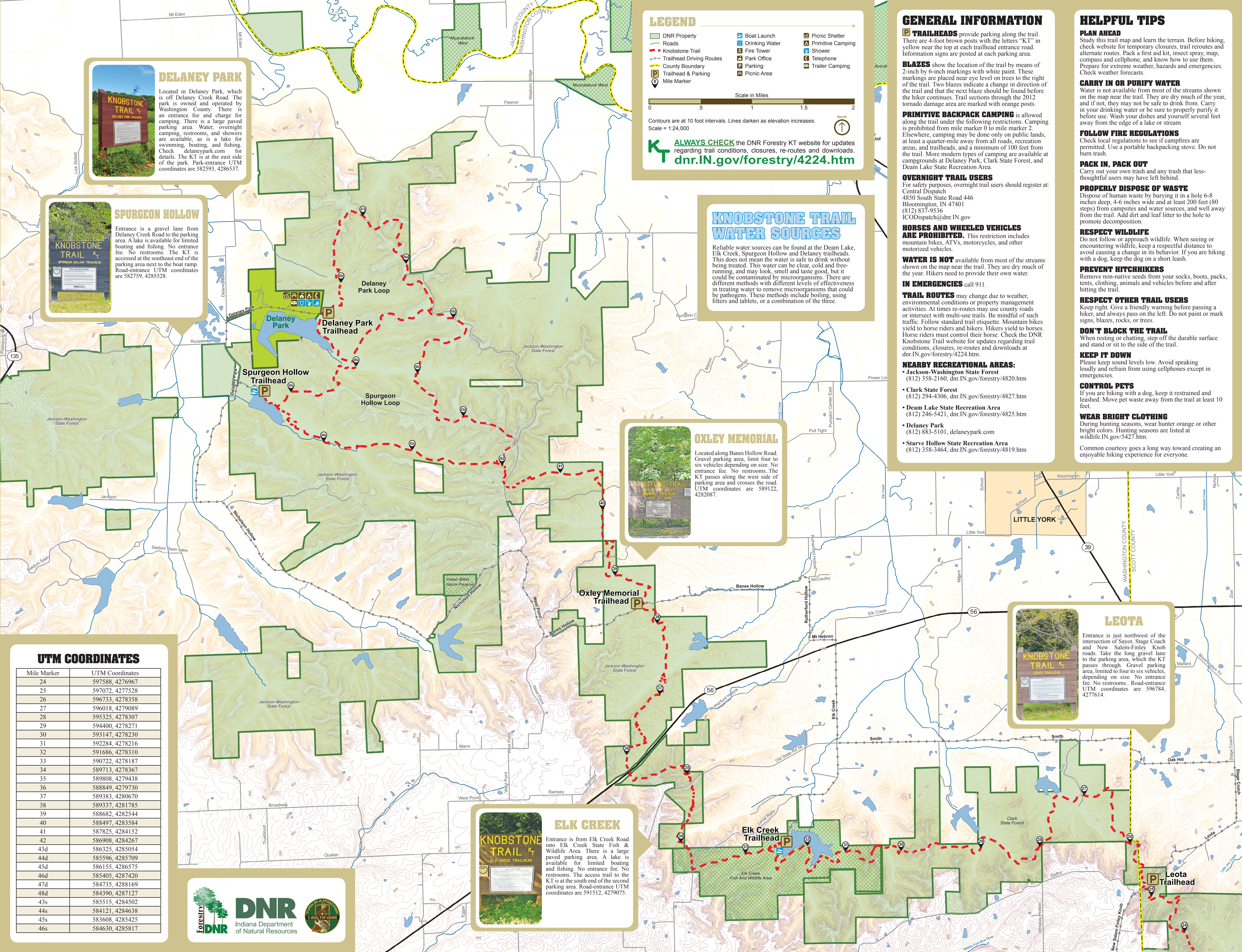
EMERGENCY CONTACT INFORMATION  
Indiana Conservation Officers (812) 837-9536  
Indiana State Police (812) 689-8001  
Please carry out all trash. Please carry out all trash. Please carry out all trash. Please carry out all trash. Please carry out all trash.



**KNOBSTONE TRAIL**  
[dnr.IN.gov/forestry/4224.htm](http://dnr.IN.gov/forestry/4224.htm) | 812-358-2160



**2016**



**DELANEY PARK**  
Located in Delaney Park, which is off Delaney Creek Road. The park is owned and operated by Washington County. There is an entrance fee and charge for camping. There is a large paved parking area. Water, overnight camping, restrooms, and showers are available, as is a lake for swimming, boating, and fishing. Check [delaneypark.com](http://delaneypark.com) for details. The KT is at the east side of the park. Park-entrance UTM coordinates are 582593, 4286537.

**SPURGEON HOLLOW**  
Entrance is a gravel lane from Delaney Creek Road to the parking area. A lake is available for limited boating and fishing. No entrance fee. No restrooms. The KT is accessed at the southeast end of the parking area next to the boat ramp. Road-entrance UTM coordinates are 582759, 4285528.

**LEGEND**

- DNR Property
- Roads
- Knobstone Trail
- Trailhead Driving Routes
- County Boundary
- Trailhead & Parking
- Mile Marker
- Boat Launch
- Drinking Water
- Fire Tower
- Park Office
- Parking
- Picnic Area
- Picnic Shelter
- Primitive Camping
- Shower
- Telephone
- Trailer Camping

Scale in Miles: 0, .5, 1, 1.5, 2

Contours are at 10 foot intervals. Lines darken as elevation increases.  
Scale = 1:24,000

**ALWAYS CHECK** the DNR Forestry KT website for updates regarding trail conditions, closures, re-routes and downloads.  
[dnr.IN.gov/forestry/4224.htm](http://dnr.IN.gov/forestry/4224.htm)

**KNOBSTONE TRAIL WATER SOURCES**

Reliable water sources can be found at the Deam Lake, Elk Creek, Spurgeon Hollow and Delaney trailheads. This does not mean the water is safe to drink without being treated. This water can be clear, cold and free-running, and may look, smell and taste good, but it could be contaminated by microorganisms. There are different methods with different levels of effectiveness in treating water to remove microorganisms that could be pathogens. These methods include boiling, using filters and tablets, or a combination of the three.

**OXLEY MEMORIAL**

Located along Banes Hollow Road. Gravel parking area, limit four to six vehicles depending on size. No entrance fee. No restrooms. The KT passes along the west side of parking area and crosses the road. UTM coordinates are 589122, 4282087.

**ELK CREEK**

Entrance is from Elk Creek Road into Elk Creek State Fish & Wildlife Area. There is a large paved parking area. A lake is available for limited boating and fishing. No entrance fee. No restrooms. The access trail to the KT is at the south end of the second parking area. Road-entrance UTM coordinates are 591512, 4279075.

**LEOTA**

Entrance is just northwest of the intersection of Saylor, Stage Coach and New Salem-Finley Knob roads. Take the long gravel lane to the parking area, which the KT passes through. Gravel parking area, limited to four to six vehicles, depending on size. No entrance fee. No restrooms. Road-entrance UTM coordinates are 596784, 4277614.

**UTM COORDINATES**

Mile Marker	UTM Coordinates
24	597588, 4276967
25	597072, 4277528
26	596733, 4278358
27	596018, 4279089
28	595325, 4278307
29	594400, 4278271
30	593147, 4278230
31	592284, 4278216
32	591686, 4278310
33	590722, 4278187
34	589713, 4278367
35	589808, 4279438
36	588849, 4279730
37	589383, 4280670
38	589337, 4281785
39	588682, 4282544
40	588497, 4283584
41	587825, 4284152
42	586908, 4284267
43d	586325, 4285054
44d	585596, 4285709
45d	586155, 4286575
46d	585405, 4287420
47d	584735, 4288169
48d	584390, 4287127
43s	585515, 4284502
44s	584121, 4284638
45s	583608, 4285425
46s	584630, 4285817



**GENERAL INFORMATION**

**TRAILHEADS** provide parking along the trail. There are 4-foot brown posts with the letters "KT" in yellow near the top at each trailhead entrance road. Information signs are posted at each parking area.

**BLAZES** show the location of the trail by means of 2-inch by 6-inch markings with white paint. These markings are placed near eye level on trees to the right of the trail. Two blazes indicate a change in direction of the trail and the next blaze should be found before the hiker continues. Trail sections through the 2012 tornado damage area are marked with orange posts.

**PRIMITIVE BACKPACK CAMPING** is allowed along the trail under the following restrictions. Camping is prohibited from mile marker 0 to mile marker 2. Elsewhere, camping may be done only on public lands, at least a quarter-mile away from all roads, recreation areas, and trailheads, and a minimum of 100 feet from the trail. More modern types of camping are available at campgrounds at Delaney Park, Clark State Forest, and Deam Lake State Recreation Area.

**OVERNIGHT TRAIL USERS**  
For safety purposes, overnight trail users should register at Central Dispatch  
4850 South State Road 446  
Bloomington, IN 47401  
(812) 837-9536  
ICODispatch@dnr.IN.gov

**HORSES AND WHEELED VEHICLES ARE PROHIBITED.** This restriction includes mountain bikes, ATVs, motorcycles, and other motorized vehicles.

**WATER IS NOT** available from most of the streams shown on the map near the trail. They are dry much of the year. Hikers need to provide their own water.

**IN EMERGENCIES** call 911.

**TRAIL ROUTES** may change due to weather, environmental conditions or property management activities. At times re-routes may use county roads or intersect with multi-use trails. Be mindful of such traffic. Follow standard trail etiquette. Mountain bikes yield to horse riders and hikers. Hikers yield to horses. Horse riders must control their horse. Check the DNR Knobstone Trail website for updates regarding trail conditions, closures, re-routes and downloads at [dnr.IN.gov/forestry/4224.htm](http://dnr.IN.gov/forestry/4224.htm).

- NEARBY RECREATIONAL AREAS:**
- Jackson-Washington State Forest (812) 358-2160, [dnr.IN.gov/forestry/4820.htm](http://dnr.IN.gov/forestry/4820.htm)
  - Clark State Forest (812) 294-4306, [dnr.IN.gov/forestry/4827.htm](http://dnr.IN.gov/forestry/4827.htm)
  - Deam Lake State Recreation Area (812) 246-5421, [dnr.IN.gov/forestry/4825.htm](http://dnr.IN.gov/forestry/4825.htm)
  - Delaney Park (812) 883-5101, [delaneypark.com](http://delaneypark.com)
  - Starve Hollow State Recreation Area (812) 358-3464, [dnr.IN.gov/forestry/4819.htm](http://dnr.IN.gov/forestry/4819.htm)

**HELPFUL TIPS**

**PLAN AHEAD**  
Study this trail map and learn the terrain. Before hiking, check website for temporary closures, trail reroutes and alternate routes. Pack a first aid kit, insect spray, map, compass and cellphone, and know how to use them. Prepare for extreme weather, hazards and emergencies. Check weather forecasts.

**CARRY IN OR PURIFY WATER**  
Water is not available from most of the streams shown on the map near the trail. They are dry much of the year, and if not, they may not be safe to drink from. Carry in your drinking water or be sure to properly purify it before use. Wash your dishes and yourself several feet away from the edge of a lake or stream.

**FOLLOW FIRE REGULATIONS**  
Check local regulations to see if campfires are permitted. Use a portable backpacking stove. Do not burn trash.

**PACK IN, PACK OUT**  
Carry out your own trash and any trash that less-thoughtful users may have left behind.

**PROPERLY DISPOSE OF WASTE**  
Dispose of human waste by burying it in a hole 6-8 inches deep, 4-6 inches wide and at least 200 feet (80 steps) from campsites and water sources, and well away from the trail. Add dirt and leaf litter to the hole to promote decomposition.

**RESPECT WILDLIFE**  
Do not follow or approach wildlife. When seeing or encountering wildlife, keep a respectful distance to avoid causing a change in its behavior. If you are hiking with a dog, keep the dog on a short leash.

**PREVENT HITCHHIKERS**  
Remove non-native seeds from your socks, boots, packs, tents, clothing, animals and vehicles before and after hitting the trail.

**RESPECT OTHER TRAIL USERS**  
Keep right. Give a friendly warning before passing a hiker, and always pass on the left. Do not paint or mark signs, blazes, rocks, or trees.

**DON'T BLOCK THE TRAIL**  
When resting or chatting, step off the durable surface and stand or sit to the side of the trail.

**KEEP IT DOWN**  
Please keep sound levels low. Avoid speaking loudly and refrain from using cellphones except in emergencies.

**CONTROL PETS**  
If you are hiking with a dog, keep it restrained and leashed. Move pet waste away from the trail at least 10 feet.

**WEAR BRIGHT CLOTHING**  
During hunting seasons, wear hunter orange or other bright colors. Hunting seasons are listed at [wildlife.IN.gov/5427.htm](http://wildlife.IN.gov/5427.htm).

Common courtesy goes a long way toward creating an enjoyable hiking experience for everyone.