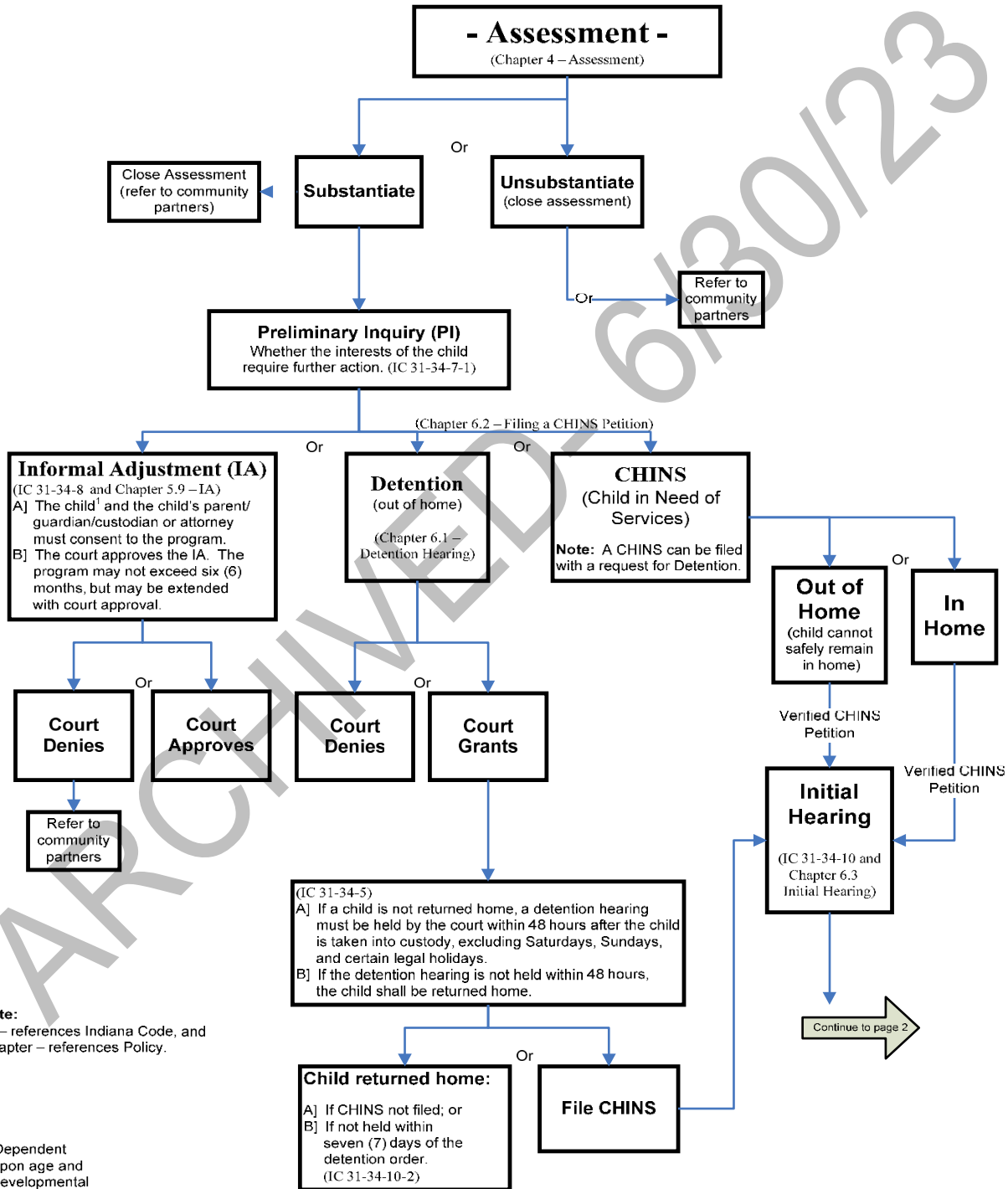
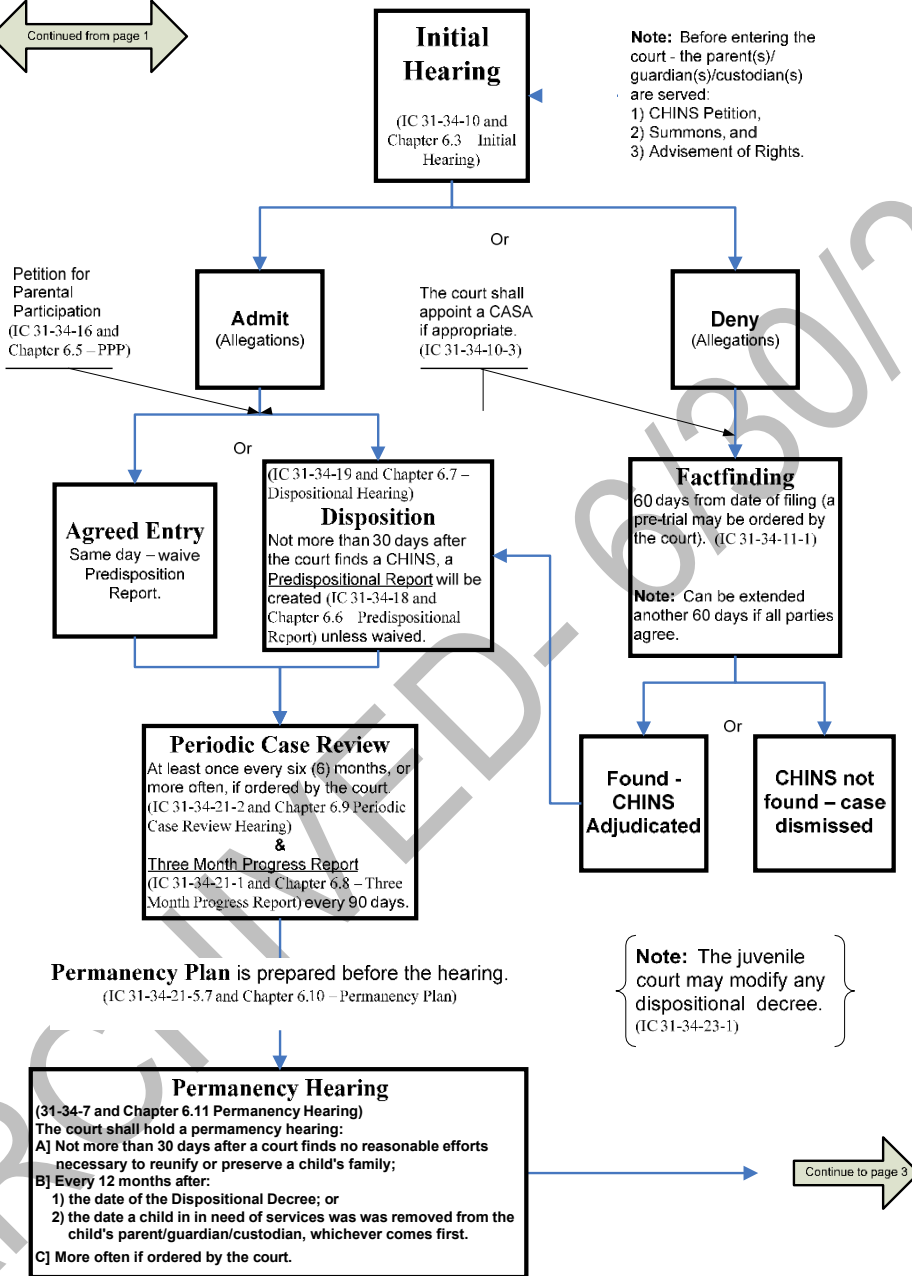
	<b>INDIANA DEPARTMENT OF CHILD SERVICES CHILD WELFARE MANUAL</b>	
	<b>Tool Name:</b> 6.A - Tool: Legal Process Overview	<b>Effective Date:</b> December 1, 2009
	<b>Reference:</b> Chapter 6	<b>Version:</b> 2



**Note:**  
IC – references Indiana Code, and  
Chapter – references Policy.

<sup>1</sup> Dependent  
upon age and  
developmental  
level.

Continued from page 1



Continued from page 2

