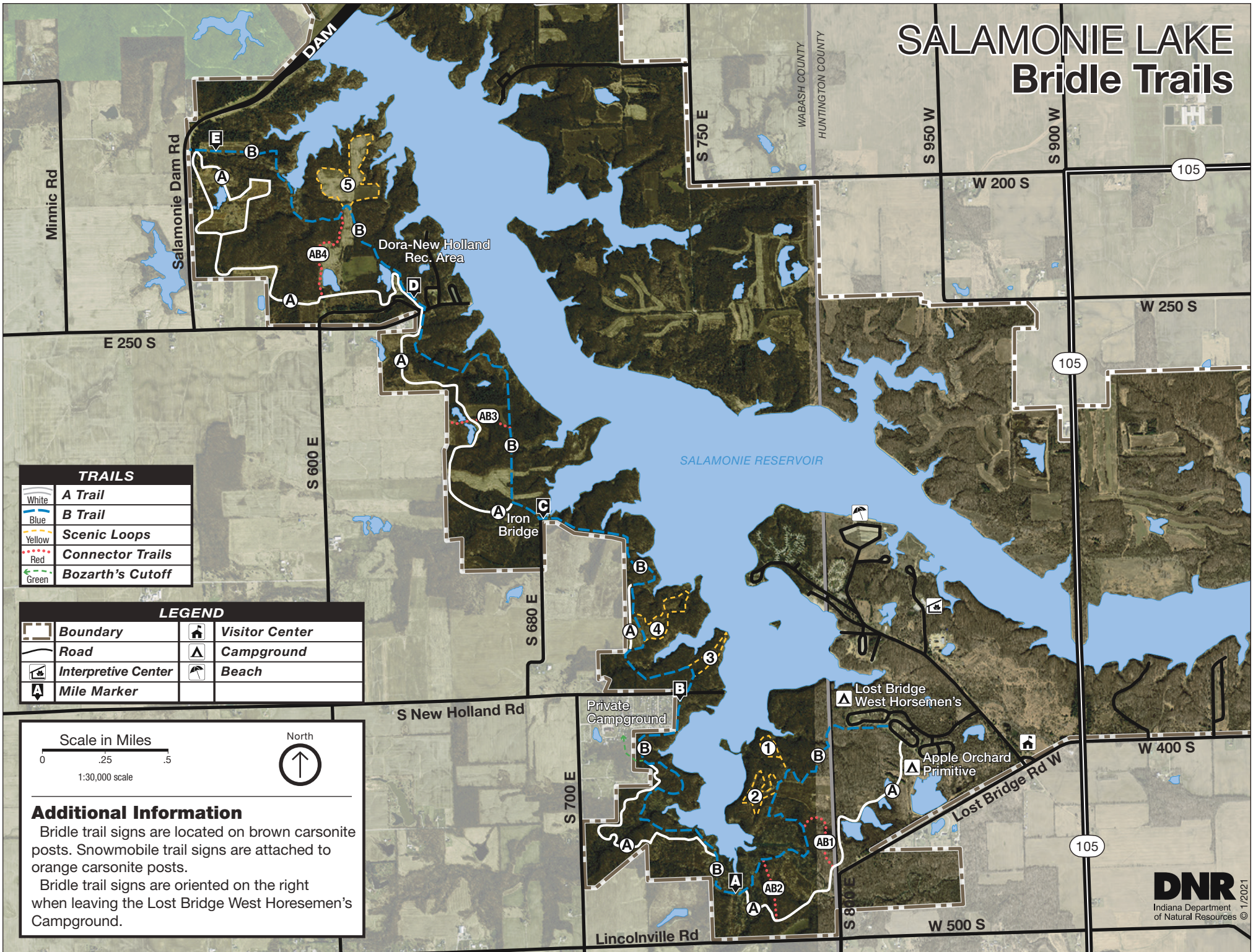


SALAMONIE LAKE Bridle Trails



TRAILS	
	A Trail
	B Trail
	Scenic Loops
	Connector Trails
	Bozarth's Cutoff

LEGEND			
	Boundary		Visitor Center
	Road		Campground
	Interpretive Center		Beach
	Mile Marker		

Scale in Miles
 0 .25 .5
 1:30,000 scale

North

Additional Information
 Bridle trail signs are located on brown carsonite posts. Snowmobile trail signs are attached to orange carsonite posts.
 Bridle trail signs are oriented on the right when leaving the Lost Bridge West Horsemen's Campground.

RULES FOR HORSEBACK RIDERS

- Riders are required to stay on marked trails at all times. Trail markers are on the right side of the trail as a rider is traveling away from Lost Bridge West State Recreation Area (SRA) and will be on the left side as the rider is traveling toward Lost Bridge West SRA. Trail areas are monitored by Law Enforcement for compliance.
- All horseback riders riding at Salamonie Reservoir and the Salamonie River State Forest are required to have an annual or daily horse trail permit valid for the day they are riding. Horse trail permits can be purchased at the Salamonie Visitor Center, Interpretive Center, or Gatehouse.
- Day riders are permitted to park in the day-use parking lots (i.e. day-use areas) in the Salamonie River State Forest, Dora-New Holland SRA and at the Lost Bridge West SRA only. Overnight camping is not permitted in day-use areas. Day-use areas are only open between sunrise and sunset.
- There are no motorized vehicles allowed on the Bridle Trail except for snowmobiles during legal snowmobiling season.
- It is unlawful to tie horses to trees on DNR property.
- Owners of unruly animals causing disturbances may be asked to leave DNR property without a refund.
- It is unsafe to ride horses on property roads except at intersections with mapped trails.

TRAIL AND PROPERTY USES

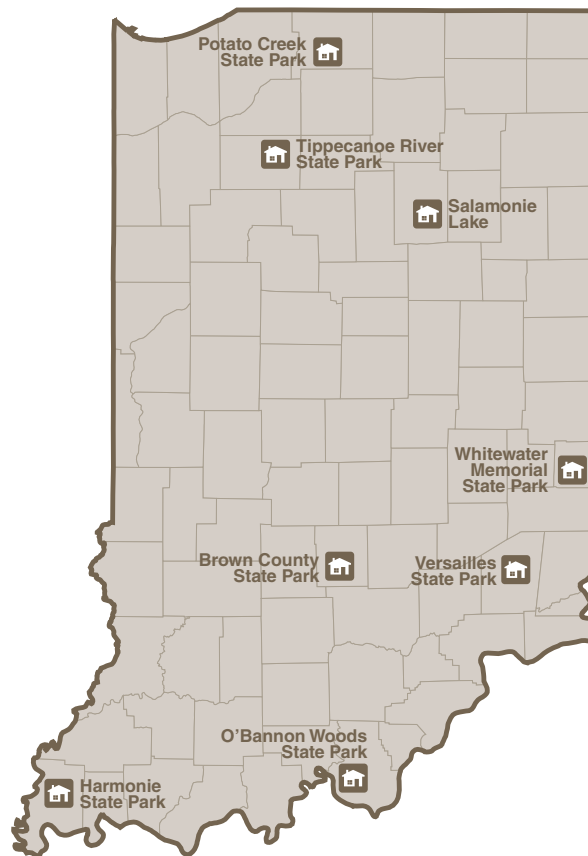
- Salamonie Reservoir is a multiple-use property managed by the DNR for a variety of public recreational opportunities. Expect to see other users such as hunters, fishermen, hikers, and snowmobilers using the Bridle Trail. The bridle trail is also signed for snowmobile use.
- Night riding and riding in wet weather is discouraged because of its hazardous nature.
- Riders are encouraged to wear hunter orange from November through January.
- No horse rentals are available on the property.

CAMPING

Salamonie Reservoir offers a primitive (class C) horseman campground in the Lost Bridge West SRA. Hitch posts and manure bins are available at campsites. A shelter house is available. Lost Bridge West modern campground (class A) and Apple Orchard primitive family campground (class C) offer additional camping for campers without horses.

The Salamonie River State Forest has a primitive (class C) horseman campground and a primitive (class C) family campground. All campers must self-register upon arrival at the State Forest campgrounds. Horses are not allowed in family or modern campgrounds.

DNR PROPERTIES WITH BRIDLE TRAILS



FOR MORE INFORMATION



Write: Salamonie Lake
9214 W. Lost Bridge Rd.
West Andrews, IN 46702

Call: 260-468-2125

Online: stateparks.IN.gov/2952.htm



Please carry out all trash you produce in order to keep your park clean and beautiful for others to enjoy!

 @INDnrstateparks andreservoirs  @indianadnr  @INDNRstateparks

See everything Indiana State Parks has to offer at stateparks.IN.gov.

OUTDOOR INDIANA Subscribe to Outdoor Indiana magazine today, Visit OutdoorIndiana.org or call 317-233-3046.

The programs, services, facilities, and activities of the Indiana Department of Natural Resources are available to everyone. DNR prohibits discrimination on the basis of race, color, national origin, age, sex, or disability. If you believe that you have been discriminated against in any program, activity, or facility as described above, or if you desire further information please write to: Department of Natural Resources, Executive Office, 402 W. Washington Street, W256, Indianapolis, IN 46204, (317) 232-4020.

© 04/2022 Indiana Department of Natural Resources

DNR Indiana Department of Natural Resources

SALAMONIE RESERVOIR BRIDLE TRAILS



At Salamonie Reservoir, horseback riders are invited to experience over 19 miles of trails through scenic vistas of meadows, forests and water. Bridle trails cross several creeks, climb hills, and travel through forests and grasslands.

Riders visiting Salamonie should ride with an ethical philosophy. Abuses such as littering and riding off of marked trails are damaging to the natural ecosystems, which are provided for the enjoyment of all citizens. Bridle trails are maintained by the DNR in partnership with the Indiana Trail Riders Association.

For more info
on.IN.gov/stateparks