

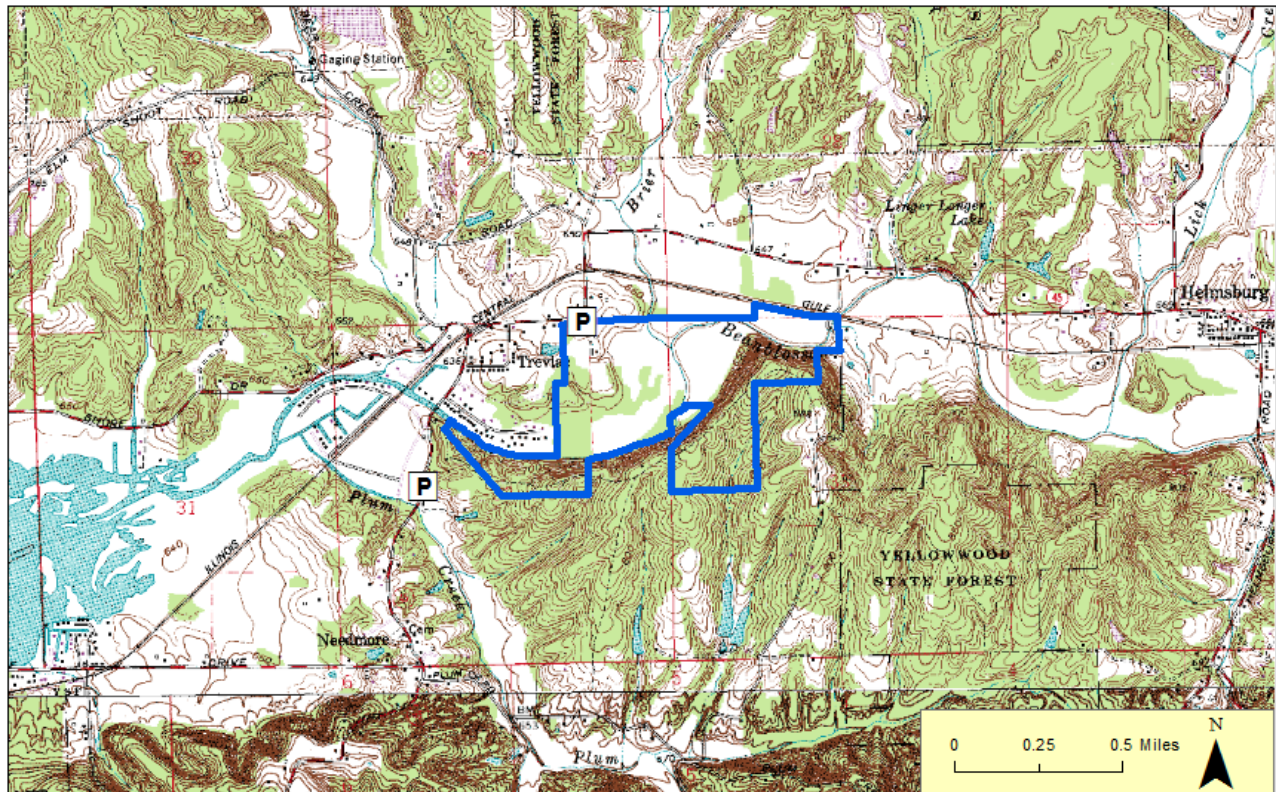
# Trevlac Bluffs Nature Preserve

County: Brown                      Size: 212.22 acres  
Ownership: Sycamore Land Trust



## Location and Access

**Parking and trails.** From Unionville, follow SR 45 east for 6.5 mi to Old SR 45, which is on the right just before the Beanblossom Creek bridge. Parking is limited to roadside pull-offs.



**Description:** Trevlac Bluffs Nature Preserve is named for its towering 200-foot bluff over Beanblossom Creek that features a rare stand of native eastern hemlock trees, found naturally in only about two dozen places in Indiana. Hemlocks are now a more northerly species, and the stands in Indiana are remnants from the cooler early post-glacial climate of thousands of years ago. The property is dedicated as an Indiana State Nature Preserve by the Department of Natural Resources, in recognition of the statewide significance of the natural communities preserved here.

The preserve also protects over 100 acres of forested wetlands in the floodplain of Beanblossom Creek and over a mile of the creek itself, which is the main input for Lake Lemon about a mile and a half downstream. National research identifies the preserve as one of three critical forest blocks in the Midwest for breeding migratory songbirds.

## Further Information:

ACRES Land Trust. 1802 Chapman Rd, Huntertown, IN 46748. (260) 637-2273  
Division of Nature Preserves Central Regional Ecologist, Danielle Williams: [dpwilliams@dnr.IN.gov](mailto:dpwilliams@dnr.IN.gov)