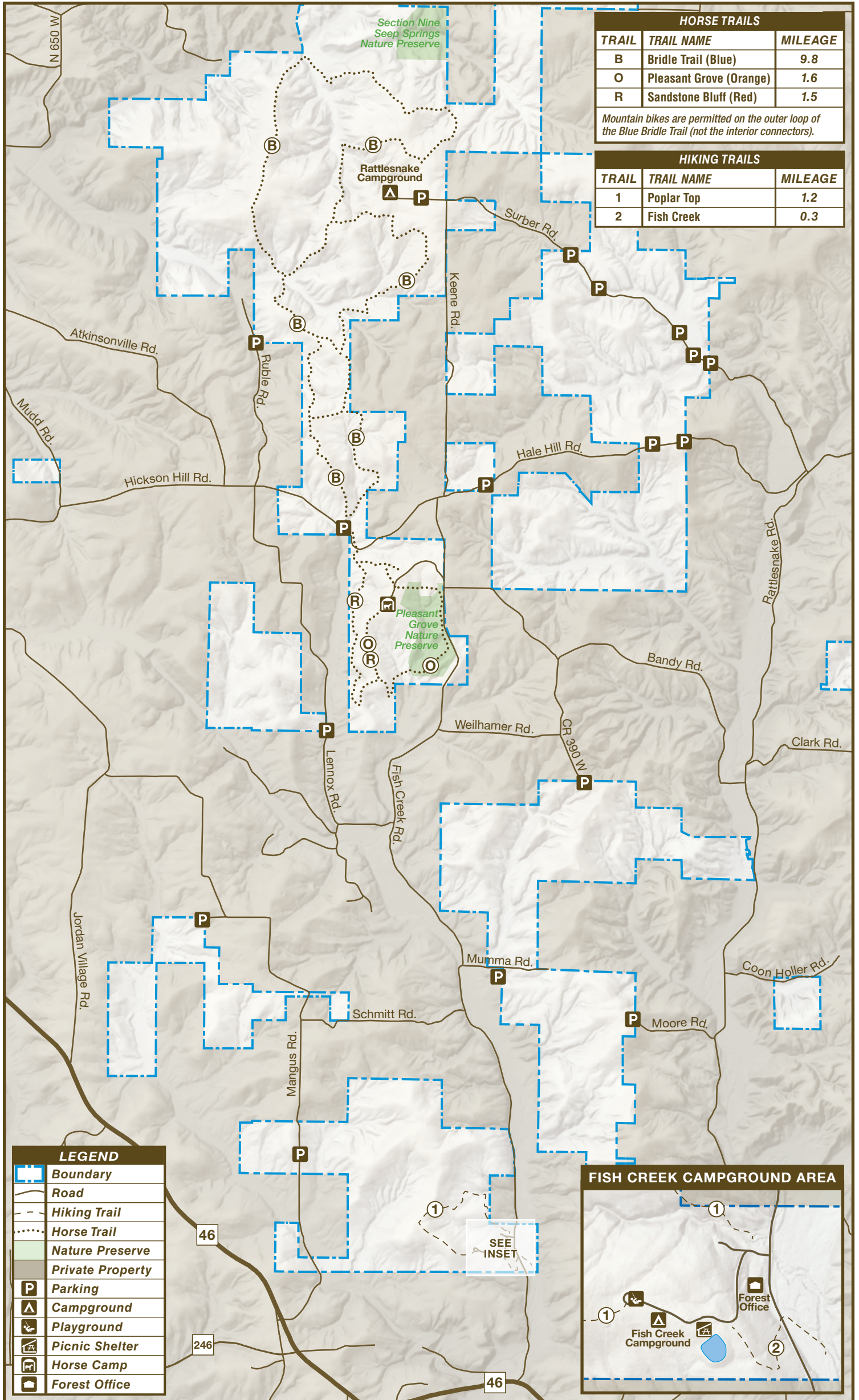


Owen-Putnam State Forest



OWEN-PUTNAM STATE FOREST

TRAIL MAP



2153 Fish Creek Road, Spencer, IN 47460
(812)829-2462 | on.IN.gov/owenputnamsf

Owen-Putnam State Forest contains 6,688 acres of forested land and is a great place to get away. Hike through some of the best hardwood forests in the country; enjoy deer, squirrel, and turkey hunting; fish in one of the many small ponds; or horseback ride through some of the beautiful hills of south-central Indiana. This property consists of many scattered holdings in a north-south orientation, and because of this scattered nature of landholding, be careful to avoid trespassing on private land.

HIKING TRAILS

TRAIL & DESCRIPTION	DISTANCE	DIFFICULTY
---------------------	----------	------------

Poplar Top	1.2 miles	Moderate
-------------------	-----------	----------

Enjoy a moderate hike through Owen-Putnam State Forest. This hike includes a wildlife pond as well as a waterfall that may occur after significant rain. Wearing hiking boots and carrying drinking water is recommended.

Fish Creek	.3 mile	Moderate
-------------------	---------	----------

A short and moderate hike. Park by the shelter house and walk down to Fish Creek, enjoying a variety of tree species along the way.

HORSE TRAILS

Owen-Putnam State Forest offers three horse trails that cover several miles of scenic beauty. To ride horses on state property, you must have a daily or annual horse tag, which you can buy at our office during normal business hours.

TRAIL & DESCRIPTION	DISTANCE	DIFFICULTY
---------------------	----------	------------

Bridle Loop (Blue)	9.8 miles	Moderate
---------------------------	-----------	----------

Start this scenic route from the Horse Campground and ride to the Rattlesnake Campground area and back.

Pleasant Grove (Orange)	1.6 mile	Moderate
--------------------------------	----------	----------

Highlights include the Horse Campground and a pioneer cemetery.

Sandstone Bluff (Red)	1.5 mile	Moderate
------------------------------	----------	----------

See a 50-foot sandstone bluff, waterfall and the Horse Campground.

PLEASE STAY ON MARKED TRAILS.

For info regarding potential closures please call the State Forest office at 812-829-2462.

MOUNTAIN BIKE TRAIL

The bike trail is part of the Blue horse trail. Most riders will find the approximately 9-mile ride moderately difficult. An off-road cycling permit is required to use the trail. For the enjoyment of all our visitors, please remember:

- Mountain bikes are only permitted on the marked areas of the Blue horse trail.
- Mountain bikers share the trail with horseback riders. Right-of-way should be yielded to people on horseback.
- The trail is marked with blue decals, a horse, and a bicycle, on Carsonite-brand posts. The markers are located on the right side of the trail until you pass the halfway point on the loop. At that point, the markers will be on the left side.

The trailhead parking lot has a capacity of four to six cars. Please do not block the fire lane entrance, which is normally marked by a steel cable stretched across it.

CAMPING

There are three campgrounds. Each operates on a first-come, first-served basis and has its own self-registration booth. All campgrounds are primitive, with a picnic table, grill, and parking spur at each campsite. Water is available at Fish Creek Campground during the warmer months. At the Horse Camp and Rattlesnake campgrounds, no drinking water is available. Campers staying at either can access water from the office via an outside water spigot or at Fish Creek Campground.

HUNTING

Deer, squirrel, and turkey hunting is available. A valid hunting license is required. Be aware of your surroundings—hunters must respect the rights of private landowners. Not all state forest boundaries are marked; however, the lines that are marked have orange paint on the state-owned side of the trees. Boundary signs are posted at intervals on the private side.

Many of our fire trails are cleared annually to provide access to the property. These trails are usually located near parking areas and have steel cables across them with DNR padlocks. To allow emergency access, please do not park in front of these cables.

RULES GOVERNING USE

Public lands are managed for the long-term use of our citizens. To protect these lands and assure their ability to provide multiple benefits forever, certain activities are prohibited, including use of off-road motorized vehicles, carelessness with fires, destruction of private or public property, unauthorized vegetation or fauna destruction, and unauthorized trail-making. Hunting and shooting is prohibited within 400 feet of recreation areas and across any roadway or trail. Please take care of your public lands and enjoy them.

Please let wild animals remain wild.

Feeding deer is prohibited. Feeding of wild animals can result in harm to both animals and people. Animals who depend on handouts become a nuisance to visitors and a danger to themselves. Please lock up all food and coolers inside cars or campers. Roll up car windows tightly.

HELP PREVENT WILDFIRES

- Build fires only in designated areas.
- Be sure to properly dispose of all smoking materials.
- Report any violation of fire regulations to park officials at once.
- Leave only footprints. Take only memories.

FOR MORE INFORMATION



Write: Owen-Putnam State Forest
2153 Fish Creek Road
Spencer, IN 47460
Call: 812-829-2462



Please carry out all trash you produce in order to keep your park clean and beautiful for others to enjoy!



OUTDOOR INDIANA Subscribe to Outdoor Indiana magazine today, Visit OutdoorIndiana.org or call (317) 233-3046.

The programs, services, facilities, and activities of the Indiana Department of Natural Resources are available to everyone. DNR prohibits discrimination on the basis of race, color, national origin, age, sex, or disability. If you believe that you have been discriminated against in any program, activity, or facility as described above, or if you desire further information please write to: Department of Natural Resources, Executive Office, 402 W. Washington Street, W256, Indianapolis, IN 46204, (317) 232-4020.