



Microcystins ELISA Summary Report

Office of Water Quality - Watershed Assessment and Planning Branch

Sample #	Location	Date Collected	Date Analyzed	Conc. (ppb)
AB20668	Fairfax SRA	5/11/2015	5/13/2015	< 0.150
AB20669	Paynetown SRA	5/11/2015	5/13/2015	< 0.150
AB20670	Starve Hollow SRA	5/11/2015	5/13/2015	< 0.150
AB20671	Deam Lake SRA	5/11/2015	5/13/2015	< 0.150
AB20672	Hardy Lake SRA	5/11/2015	5/13/2015	< 0.150
AB20668LD	Fairfax (Lab Duplicate)	5/11/2015	5/13/2015	< 0.150
20150511LB	Lab Blank	5/11/2015	5/13/2015	< 0.150
AB20666	Whitewater (Field Duplicate)	5/12/2015	5/13/2015	< 0.150
AB20667	Field Blank	5/12/2015	5/13/2015	< 0.150
AB20673	Raccoon Lake SRA	5/12/2015	5/13/2015	< 0.150
AB20674	Whitewater Memorial SP	5/12/2015	5/13/2015	< 0.150
AB20675	Quakertown SRA	5/12/2015	5/13/2015	< 0.150
AB20676	Mounds SRA	5/12/2015	5/13/2015	< 0.150



Assay Calibration Report

Assay Information

Assay Name: Microcystins ADDA
 Assay Mode: 4-Parameter Logistic
 Normal: 0.1500 - 5.0000
 Units: ng/mL
 # of decimals: 4
 Assay Description:

Controls:
 Normal Control

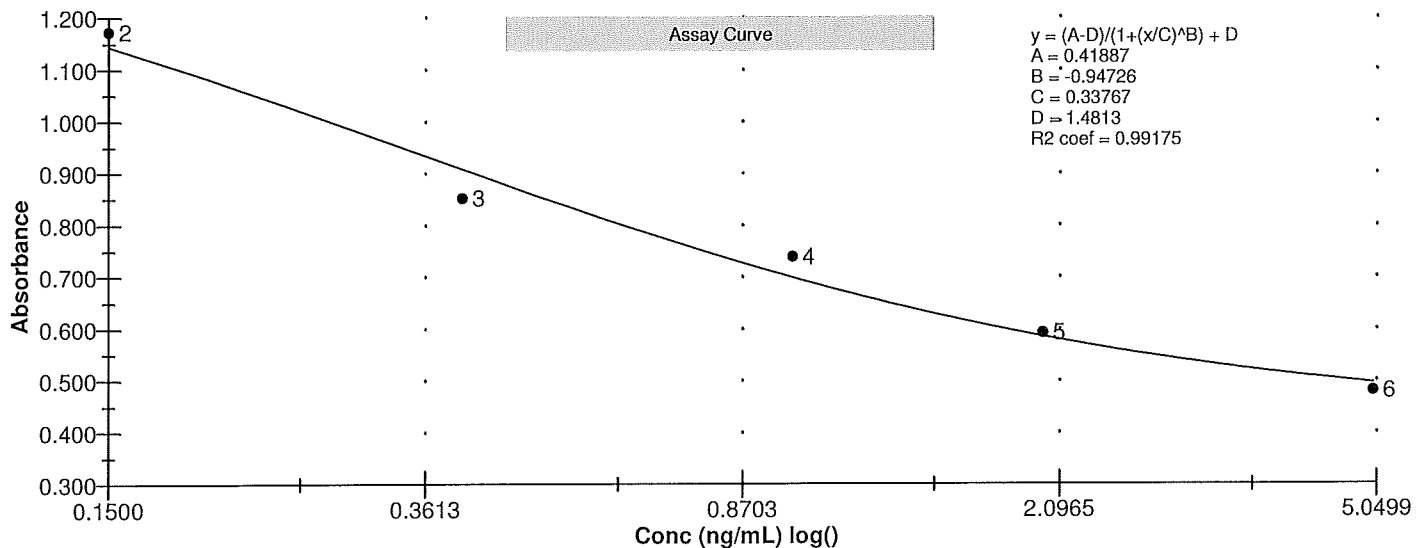
Standards:

Std1, Concentration = 0.0000, Minimum number to use: 2
 Std2, Concentration = 0.1500, Minimum number to use: 2
 Std3, Concentration = 0.4000, Minimum number to use: 2
 Std4, Concentration = 1.0000, Minimum number to use: 2
 Std5, Concentration = 2.0000, Minimum number to use: 2
 Std6, Concentration = 5.0000, Minimum number to use: 2
 Curve valid interval: 7 days 0 hours
 Axis Mode: Y = Abs, X = Log(Conc)

Assay Calibration and Statistics

Name	Absorbance	Concentration	Position
5/13/2015 12:31:49 PM			
Std1	1.478 Abs	0.0008 ng/mL	A01
Std1	1.476 Abs	0.0013 ng/mL	B01
Std2	1.173 Abs	0.1313 ng/mL	C01
Std3	0.824 Abs	0.5630 ng/mL	E01
Std3	0.881 Abs	0.4450 ng/mL	F01
Std4	0.718 Abs	0.9080 ng/mL	G01
Std4	0.760 Abs	0.7445 ng/mL	H01
Std5	0.581 Abs	2.0640 ng/mL	A02
Std5	0.603 Abs	1.7580 ng/mL	B02
Std6	0.464 Abs	> 5.0000 ng/mL	C02
Std6	0.497 Abs	4.9000 ng/mL	D02
5/13/2015 12:31:49 PM			
Normal Control	0.811 Abs	0.5945 ng/mL	F02
Normal Control	0.822 Abs	0.5675 ng/mL	E02

Name	Mean Abs	SD Abs	CV Abs	Mean Conc	SD Conc	CV Conc	Diff Conc
Std1	1.477	0.001	0.10	0.001	0.000	33.67	
Std2	1.173			0.131			-12.67
Std3	0.852	0.040	4.73	0.504	0.083	16.56	26.00
Std4	0.739	0.030	4.02	0.826	0.116	13.99	-17.40
Std5	0.592	0.016	2.63	1.911	0.216	11.32	-4.45
Std6	0.480	0.023	4.86				-100.00
Normal Control	0.817	0.008	0.95	0.581	0.019	3.29	





Test Report

Test Information

Name/ID	Assay	Absorbance	Concentration	Interpretation	Reference	Position
5/13/2015 12:31:49 PM						
Std1	Microcystins ADDA	1.478 Abs	0.0024 ng/mL		0.0000	A01
Std1	Microcystins ADDA	1.476 Abs	0.0032 ng/mL		0.0000	B01
Std2	Microcystins ADDA	1.173 Abs	0.1496 ng/mL		0.1500	C01
Std2	Microcystins ADDA	1.238 Abs	0.1106 ng/mL		0.1500	D01
Std3	Microcystins ADDA	0.824 Abs	0.5640 ng/mL		0.4000	E01
Std3	Microcystins ADDA	0.881 Abs	0.4535 ng/mL		0.4000	F01
Std4	Microcystins ADDA	0.718 Abs	0.8850 ng/mL		1.0000	G01
Std4	Microcystins ADDA	0.760 Abs	0.7330 ng/mL		1.0000	H01
Std5	Microcystins ADDA	0.581 Abs	2.0000 ng/mL		2.0000	A02
Std5	Microcystins ADDA	0.603 Abs	1.6950 ng/mL		2.0000	B02
Std6	Microcystins ADDA	0.464 Abs	> 5.0000 ng/mL		5.0000	C02
Std6	Microcystins ADDA	0.497 Abs	> 5.0000 ng/mL		5.0000	D02
Normal Control	Microcystins ADDA	0.822 Abs	0.5675 ng/mL			E02
Normal Control	Microcystins ADDA	0.811 Abs	0.5945 ng/mL			F02
AB20668	Microcystins ADDA	1.506 Abs	< 0.0000 ng/mL	Out(LR)	0.1500 - 5.0000	G02
AB20668	Microcystins ADDA	1.576 Abs	< 0.0000 ng/mL	Out(LR)	0.1500 - 5.0000	H02
AB20669	Microcystins ADDA	1.475 Abs	0.0015 ng/mL	LOW	0.1500 - 5.0000	A03
AB20669	Microcystins ADDA	1.498 Abs	< 0.0000 ng/mL	Out(LR)	0.1500 - 5.0000	B03
AB20670	Microcystins ADDA	1.453 Abs	0.0076 ng/mL	LOW	0.1500 - 5.0000	C03
AB20670	Microcystins ADDA	1.441 Abs	0.0111 ng/mL	LOW	0.1500 - 5.0000	D03
AB20671	Microcystins ADDA	1.513 Abs	< 0.0000 ng/mL	Out(LR)	0.1500 - 5.0000	E03
AB20671	Microcystins ADDA	1.448 Abs	0.0091 ng/mL	LOW	0.1500 - 5.0000	F03
AB20672	Microcystins ADDA	1.378 Abs	0.0321 ng/mL	LOW	0.1500 - 5.0000	G03
AB20672	Microcystins ADDA	1.516 Abs	< 0.0000 ng/mL	Out(LR)	0.1500 - 5.0000	H03
AB20668LD	Microcystins ADDA	1.481 Abs	0.0001 ng/mL	LOW	0.1500 - 5.0000	A04
AB20668LD	Microcystins ADDA	1.436 Abs	0.0127 ng/mL	LOW	0.1500 - 5.0000	B04
20150511LB	Microcystins ADDA	1.474 Abs	0.0018 ng/mL	LOW	0.1500 - 5.0000	C04
20150511LB	Microcystins ADDA	1.444 Abs	0.0102 ng/mL	LOW	0.1500 - 5.0000	D04
AB21632	Microcystins ADDA	1.486 Abs	< 0.0000 ng/mL	Out(LR)	0.1500 - 5.0000	E04
AB21632	Microcystins ADDA	1.520 Abs	< 0.0000 ng/mL	Out(LR)	0.1500 - 5.0000	F04
AB21633	Microcystins ADDA	1.506 Abs	< 0.0000 ng/mL	Out(LR)	0.1500 - 5.0000	G04
AB21633	Microcystins ADDA	1.551 Abs	< 0.0000 ng/mL	Out(LR)	0.1500 - 5.0000	H04
AB21634	Microcystins ADDA	1.437 Abs	0.0124 ng/mL	LOW	0.1500 - 5.0000	A05
AB21634	Microcystins ADDA	1.458 Abs	0.0061 ng/mL	LOW	0.1500 - 5.0000	B05
AB21635	Microcystins ADDA	1.483 Abs	< 0.0000 ng/mL	Out(LR)	0.1500 - 5.0000	C05
AB21635	Microcystins ADDA	1.497 Abs	< 0.0000 ng/mL	Out(LR)	0.1500 - 5.0000	D05
AB20666	Microcystins ADDA	1.387 Abs	0.0289 ng/mL	LOW	0.1500 - 5.0000	E05
AB20666	Microcystins ADDA	1.405 Abs	0.0226 ng/mL	LOW	0.1500 - 5.0000	F05
AB20667	Microcystins ADDA	1.468 Abs	0.0033 ng/mL	LOW	0.1500 - 5.0000	G05
AB20667	Microcystins ADDA	1.492 Abs	< 0.0000 ng/mL	Out(LR)	0.1500 - 5.0000	H05
AB20673	Microcystins ADDA	1.425 Abs	0.0161 ng/mL	LOW	0.1500 - 5.0000	A06
AB20673	Microcystins ADDA	1.409 Abs	0.0213 ng/mL	LOW	0.1500 - 5.0000	B06
AB20674	Microcystins ADDA	1.397 Abs	0.0254 ng/mL	LOW	0.1500 - 5.0000	C06
AB20674	Microcystins ADDA	1.448 Abs	0.0091 ng/mL	LOW	0.1500 - 5.0000	D06
AB20675	Microcystins ADDA	1.152 Abs	0.1450 ng/mL	LOW	0.1500 - 5.0000	E06
AB20675	Microcystins ADDA	1.145 Abs	0.1498 ng/mL	LOW	0.1500 - 5.0000	F06
AB20676	Microcystins ADDA	1.436 Abs	0.0127 ng/mL	LOW	0.1500 - 5.0000	G06
AB20676	Microcystins ADDA	1.438 Abs	0.0121 ng/mL	LOW	0.1500 - 5.0000	H06

The data in this report is preliminary without a quality control report. This data is not warranted for accuracy or other purposes.



Laboratory Analyst Signature

5/14/15
Date



Test Report

Test Information						
Name/ID	Assay	Absorbance	Concentration	Interpretation	Reference	Position
AB21636	Microcystins ADDA	0.524 Abs	3.4750 ng/mL		0.1500 - 5.0000	A07
AB21636	Microcystins ADDA	0.491 Abs	> 5.0000 ng/mL	Out(LR)	0.1500 - 5.0000	B07
AB21637	Microcystins ADDA	1.429 Abs	0.0148 ng/mL	LOW	0.1500 - 5.0000	C07
AB21637	Microcystins ADDA	1.426 Abs	0.0158 ng/mL	LOW	0.1500 - 5.0000	D07
AB21638	Microcystins ADDA	1.334 Abs	0.0491 ng/mL	LOW	0.1500 - 5.0000	E07
AB21638	Microcystins ADDA	1.291 Abs	0.0677 ng/mL	LOW	0.1500 - 5.0000	F07
AB21639	Microcystins ADDA	1.463 Abs	0.0047 ng/mL	LOW	0.1500 - 5.0000	G07
AB21639	Microcystins ADDA	1.420 Abs	0.0177 ng/mL	LOW	0.1500 - 5.0000	H07
AB21640	Microcystins ADDA	0.534 Abs	3.1250 ng/mL		0.1500 - 5.0000	A08
AB21640	Microcystins ADDA	0.463 Abs	> 5.0000 ng/mL	Out(LR)	0.1500 - 5.0000	B08
AB21641	Microcystins ADDA	1.427 Abs	0.0154 ng/mL	LOW	0.1500 - 5.0000	C08
AB21641	Microcystins ADDA	1.489 Abs	< 0.0000 ng/mL	Out(LR)	0.1500 - 5.0000	D08
AB21642	Microcystins ADDA	1.439 Abs	0.0117 ng/mL	LOW	0.1500 - 5.0000	E08
AB21642	Microcystins ADDA	1.497 Abs	< 0.0000 ng/mL	Out(LR)	0.1500 - 5.0000	F08

The data in this report is preliminary without a quality control report. This data is not warranted for accuracy or other purposes.

Laboratory Analyst Signature

3/14/15

Date