



## Anatoxin-A Receptor-Binding Assay Summary Report

Office of Water Quality - Watershed Assessment and Planning Branch

<b>Sample #</b>	<b>Location</b>	<b>Date Collected</b>	<b>Date Analyzed</b>	<b>Conc. (ppb)</b>
20140825LB	Lab Blank	8/25/2014	8/28/2014	<10
AB18788	Field Blank	8/25/2014	8/28/2014	<10
AB18789	Chain O' Lakes SP (Field Duplicate)	8/25/2014	8/28/2014	<10
AB18790	Potato Creek SP	8/25/2014	8/28/2014	<10
AB18789LD	Chain O' Lakes SP (Lab Duplicate)	8/25/2014	8/28/2014	<10
AB18787	Chain O' Lakes SP	8/25/2014	8/28/2014	<10



# Assay Calibration Report

## Assay Information

Assay Name: ANATOXIN-A 1X  
 Assay Mode: 4-Parameter Logistic  
 Normal: 10.000 - 500.000

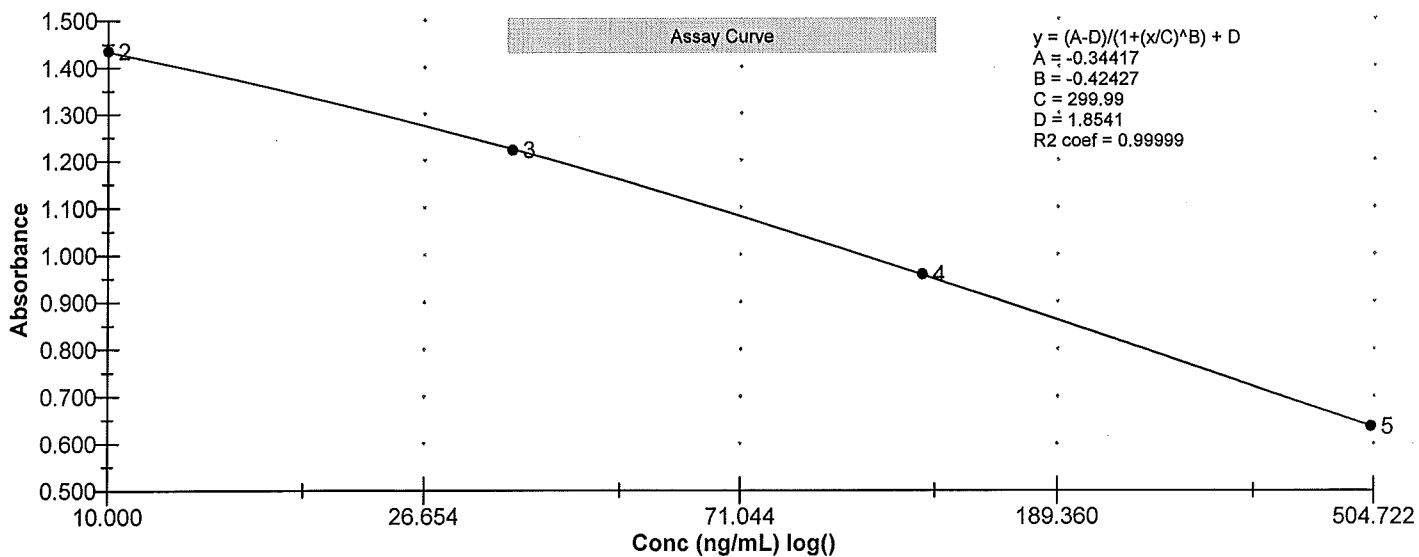
Units: ng/mL  
 # of decimals: 3  
 Assay Description:

Standards:  
 Std1, Concentration = 0.000, Minimum number to use: 3  
 Std2, Concentration = 10.000, Minimum number to use: 3  
 Std3, Concentration = 35.000, Minimum number to use: 3  
 Std4, Concentration = 125.000, Minimum number to use: 3  
 Std5, Concentration = 500.000, Minimum number to use: 3  
 Curve valid interval: 7 days 0 hours  
 Axis Mode: Y = Abs, X = Log(Conc)

## Assay Calibration and Statistics

Name	Absorbance	Concentration	Position
8/28/2014 1:31:25 PM			
Std1	1.933 Abs	< 0.000 ng/mL	A01
Std1	1.759 Abs	0.203 ng/mL	B01
Std1	1.870 Abs	< 0.000 ng/mL	C01
Std2	1.425 Abs	10.635 ng/mL	D01
Std2	1.379 Abs	14.400 ng/mL	E01
Std2	1.500 Abs	6.135 ng/mL	F01
Std3	1.222 Abs	35.350 ng/mL	H01
Std4	0.957 Abs	124.900 ng/mL	C02
Std4	0.959 Abs	123.800 ng/mL	D02
Std5	0.618 Abs	> 500.000 ng/mL	E02
Std5	0.654 Abs	463.000 ng/mL	F02

Name	Mean Abs	SD Abs	CV Abs	Mean Conc	SD Conc	CV Conc	Diff Conc
Std1	1.854	0.088	4.75				
Std2	1.435	0.061	4.26	10.390	4.138	39.83	3.90
Std3	1.222			35.350			1.00
Std4	0.958	0.001	0.15	124.350	0.778	0.63	-0.52
Std5	0.636	0.025	4.00				-100.00





# Test Report

## Test Information

Name/ID	Assay	Absorbance	Concentration	Interpretation	Reference	Position
8/28/2014 1:31:25 PM						
Std1	ANATOXIN-A 1X	1.933 Abs	< 0.000 ng/mL		0.000	A01
Std1	ANATOXIN-A 1X	1.759 Abs	< 0.000 ng/mL		0.000	B01
Std1	ANATOXIN-A 1X	1.870 Abs	< 0.000 ng/mL		0.000	C01
Std2	ANATOXIN-A 1X	1.425 Abs	0.975 ng/mL		10.000	D01
Std2	ANATOXIN-A 1X	1.379 Abs	2.025 ng/mL		10.000	E01
Std2	ANATOXIN-A 1X	1.500 Abs	0.040 ng/mL		10.000	F01
Std3	ANATOXIN-A 1X	1.153 Abs	13.535 ng/mL		35.000	G01
Std3	ANATOXIN-A 1X	1.222 Abs	8.665 ng/mL		35.000	H01
Std3	ANATOXIN-A 1X	1.305 Abs	4.505 ng/mL		35.000	A02
Std4	ANATOXIN-A 1X	0.987 Abs	33.200 ng/mL		125.000	B02
Std4	ANATOXIN-A 1X	0.957 Abs	38.500 ng/mL		125.000	C02
Std4	ANATOXIN-A 1X	0.959 Abs	38.100 ng/mL		125.000	D02
Std5	ANATOXIN-A 1X	0.618 Abs	202.500 ng/mL		500.000	E02
Std5	ANATOXIN-A 1X	0.654 Abs	167.500 ng/mL		500.000	F02
20140825LB	ANATOXIN-A 1X	2.310 Abs	< 0.000 ng/mL	Out(LR)	10.000 - 500.000	H02
20140825LB	ANATOXIN-A 1X	2.435 Abs	< 0.000 ng/mL	Out(LR)	10.000 - 500.000	A03
20140825LB	ANATOXIN-A 1X	2.075 Abs [2.2733] {8.0 (	< 0.000 ng/mL [< 0.000] {137.0	Out(LR) [Out(LR)]	10.000 - 500.000	B03
AB18788	ANATOXIN-A 1X	1.924 Abs	< 0.000 ng/mL	Out(LR)	10.000 - 500.000	C03
AB18788	ANATOXIN-A 1X	1.968 Abs	< 0.000 ng/mL	Out(LR)	10.000 - 500.000	D03
AB18788	ANATOXIN-A 1X	1.943 Abs [1.9450] {1.1 (	< 0.000 ng/mL [< 0.000] {137.0	Out(LR) [Out(LR)]	10.000 - 500.000	E03
AB18789	ANATOXIN-A 1X	1.875 Abs	< 0.000 ng/mL	Out(LR)	10.000 - 500.000	F03
AB18789	ANATOXIN-A 1X	1.858 Abs	< 0.000 ng/mL	Out(LR)	10.000 - 500.000	G03
AB18789	ANATOXIN-A 1X	1.965 Abs [1.8993] {3.0 (	< 0.000 ng/mL [< 0.000] {137.0	Out(LR) [Out(LR)]	10.000 - 500.000	H03
AB18790	ANATOXIN-A 1X	2.104 Abs	< 0.000 ng/mL	Out(LR)	10.000 - 500.000	A04
AB18790	ANATOXIN-A 1X	2.033 Abs	< 0.000 ng/mL	Out(LR)	10.000 - 500.000	B04
AB18790	ANATOXIN-A 1X	2.012 Abs [2.0497] {2.4 (	< 0.000 ng/mL [< 0.000] {137.0	Out(LR) [Out(LR)]	10.000 - 500.000	C04
AB18789LD	ANATOXIN-A 1X	1.831 Abs	0.007 ng/mL	LOW	10.000 - 500.000	D04
AB18789LD	ANATOXIN-A 1X	1.900 Abs	< 0.000 ng/mL	Out(LR)	10.000 - 500.000	E04
AB18789LD	ANATOXIN-A 1X	1.933 Abs [1.8880] {2.8 (	< 0.000 ng/mL [< 0.000] {137.0	Out(LR) [Out(LR)]	10.000 - 500.000	F04
AB18787	ANATOXIN-A 1X	1.981 Abs	< 0.000 ng/mL	Out(LR)	10.000 - 500.000	G04
AB18787	ANATOXIN-A 1X	1.759 Abs	0.203 ng/mL	LOW	10.000 - 500.000	H04
AB18787	ANATOXIN-A 1X	1.879 Abs [1.8730] {5.9 (	< 0.000 ng/mL [< 0.000] {137.0	Out(LR) [Out(LR)]	10.000 - 500.000	A05

The data in this report is preliminary without a quality control report. This data is not warranted for accuracy or other purposes.

*Justice Kersay*  
 Laboratory Analyst Signature

28 Aug 2014  
 Date