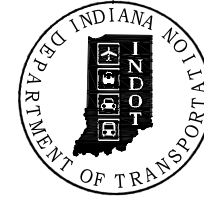


PROJECT	DESIGNATION
1601094	1601094
CONTRACT	BRIDGE FILE
B-42911	040-67-01838C

INDIANA DEPARTMENT OF TRANSPORTATION



STRUCTURE INFORMATION				
STRUCTURE	TYPE	SPAN AND SKEW	OVER	STATION
040-67-01838C	REINFORCED CONCRETE GIRDER BRIDGE	30'-0" CLEAR SPAN SQUARE	SALLUST BRANCH OF MILL CREEK	1325+12 LINE "N"

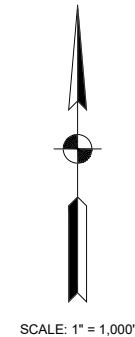
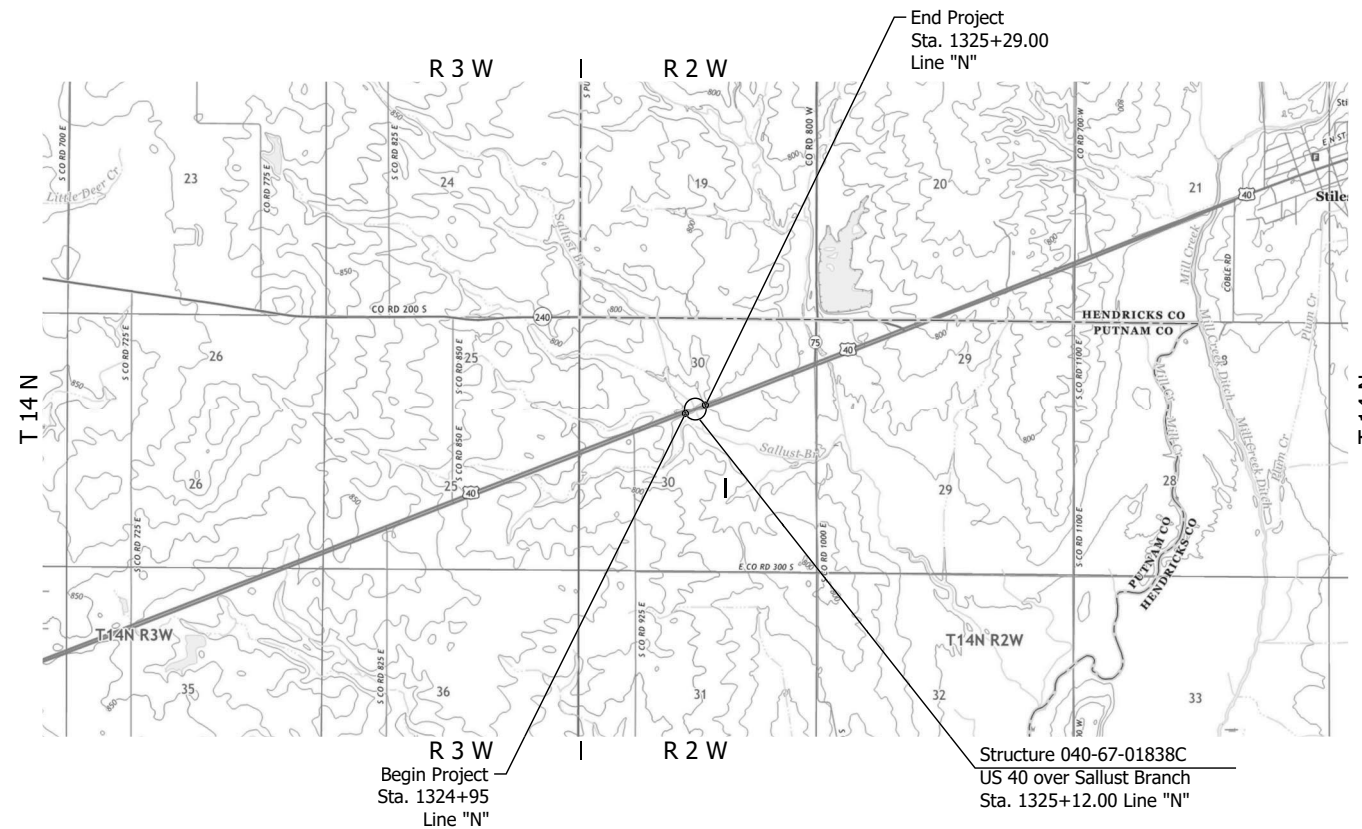
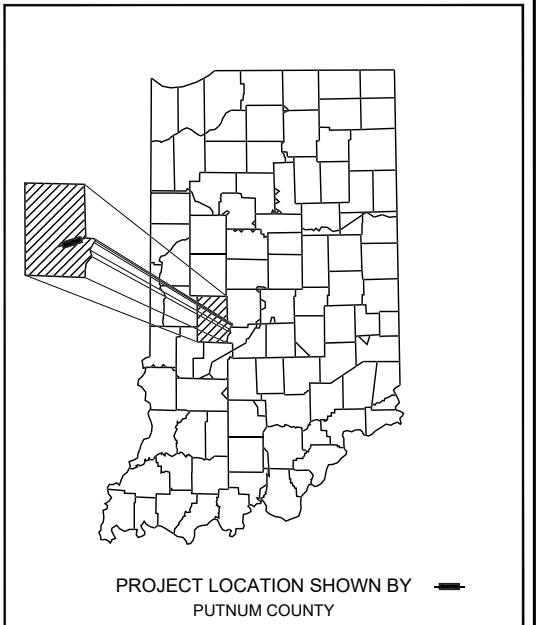
TRAFFIC DATA	US 40	
A.A.D.T. (2021)	4,780	V.P.D.
A.A.D.T. (2041)	5,340	V.P.D.
D.H.V. (2041)	518	V.P.H.
DIRECTIONAL DISTRIBUTION	49.50	%
TRUCKS	9.01	% D.H.V.
	11.72	% A.A.D.T.
DESIGN DATA		
DESIGN SPEED	55 M.P.H.	
PROJECT DESIGN CRITERIA	3R (FREEWAY)	
FUNCTIONAL CLASSIFICATION	PRINCIPAL ARTERIAL	
RURAL/URBAN	RURAL	
TERRAIN	LEVEL	
ACCESS CONTROL	FULL	

BRIDGE PREVENTATIVE MAINTENANCE PLANS

FOR SPANS OVER 20 FEET

ROUTE: US 40 AT: RP 47+2
 PROJECT NOS. 1601094 P.E.
 R/W 1601094 CONST.

Bridge Preventative Maintenance on US 40 over Sallust Branch of Mill Creek, Located 0.50 Miles West of SR 75, Sections 30, T-14-N, R-2-W, Jefferson Township, Putnam County, Indiana



PROJECT LENGTH	
BRIDGE LENGTH :	0.006 MILE
ROADWAY LENGTH :	0.000 MILE
TOTAL LENGTH :	0.006 MILE
MAX. GRADE :	0.59 %

HUC: 051202030503

60% Plans
April 21, 2020

INDIANA DEPARTMENT OF TRANSPORTATION
 STANDARD SPECIFICATIONS DATED 2020
 TO BE USED WITH THESE PLANS.

RQAW
 INTENTIONAL INNOVATION
 8770 NORTH ST., STE. 110
 FISHERS, IN 46038
 P: 317.588.1798
 F: 317.588.1799
 WWW.RQAW.COM

PLANS PREPARED BY:	RQAW Corporation, Inc.	317-588-1798
		PHONE NUMBER
CERTIFIED BY:		DATE
APPROVED FOR LETTING:	INDIANA DEPARTMENT OF TRANSPORTATION	DATE

BRIDGE FILE	
040-67-01838C	
DESIGNATION	
1601094	
SURVEY BOOK	SHEET
N/A	1 of 8
CONTRACT	PROJECT
B-42911	1601094

UTILITIES

<p>COMMUNICATIONS: TDS TELECOM 125 S. 84th STREET, SUITE 450 MILWAUKEE, WI 53214 (262) 754-3063 MATT SCHULTE matt.schulte@tdstelecom.com</p> <p>COMMUNICATIONS: NEW WAVE COMMUNICATIONS 604 E. NATIONAL AVENUE BRAZIL, IN 47834 (812) 420-2861 JOSHUA DeWITT jdewitt@newwavecom.com</p> <p>ELECTRIC: DUKE ENERGY TRANSMISSION 1000 E. MAIN STREET PLAINFIELD, IN 46168 (317) 838-2044 DWAYNE WRIGHT dei-tline-coord@duke-energy.com</p> <p>TRAFFIC: INDOT ITS 8620 E. 21ST STREET INDIANAPOLIS, IN 46219 (317) 889-8606 KONSTANTIN VEYGMAN kveygman@indot.in.gov</p>	<p>COMMUNICATIONS: WINDSTREAM 5020 SMYTHE DRIVE EVANSVILLE, IN 47715 (812) 759-2833 DANIEL LESKINEN daniel.leskinen@windstream.com</p> <p>ELECTRIC: DUKE ENERGY DISTRIBUTION 390 N. MAIN STREET MARTINSVILLE, IN 46151 (317) 776-5341 CINDY ROWLAND cindy.rowland@duke-energy.com</p> <p>ELECTRIC: HENDRICKS POWER COOP PO BOX 309 DANVILLE, IN 46122 (317) 745-5473 JASON STEWART jstewart@hendrickspower.com</p> <p>TRAFFIC SIGNALS: INDOT SIGNALS 279 W. CR 300 N. CRAWFORDSVILLE, IN 47933 (765) 361-5640 MONTY WILSON mowilson@indot.in.gov</p>
--	--

INDEX

SHEET NO.	DRAWING NO.	SUBJECT
1		TITLE SHEET
2		INDEX SHEET
3		TYPICAL SECTIONS
4-5		TRAFFIC MAINTENANCE DETAILS
6		EROSION CONTROL DETAILS
7	C1	GENERAL PLAN
8	C2	GENERAL PLAN DETAILS

REVISIONS

SHEET NO.	DATE	DESCRIPTION OF REVISION

HOLEY MOLEY SAYS

"DIG SAFELY"



"IT'S THE LAW"

CALL 2 WORKING DAYS BEFORE YOU DIG

1-800-382-5544

CALL TOLL FREE

PER INDIANA STATE LAW ICR-1-26

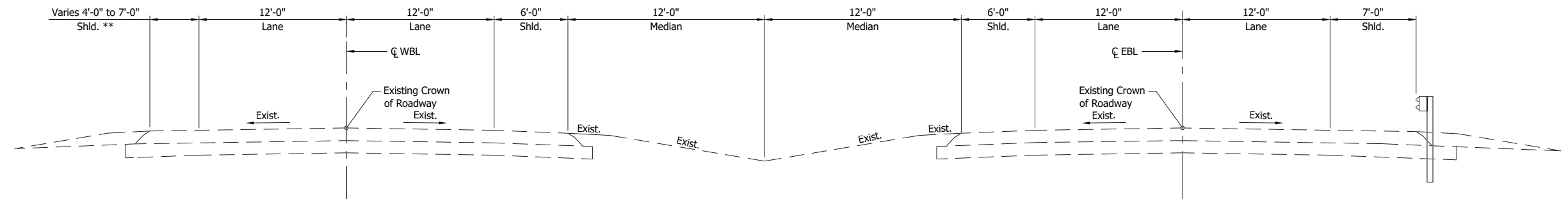
IT IS AGAINST THE LAW TO EXCAVATE

WITHOUT NOTIFYING THE UNDERGROUND

LOCATION SERVICE TWO (2) WORKING

DAYS BEFORE COMMENCING WORK.

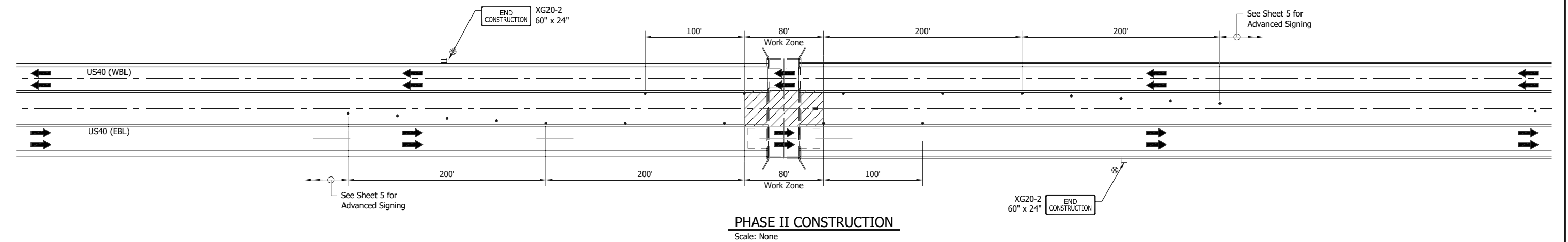
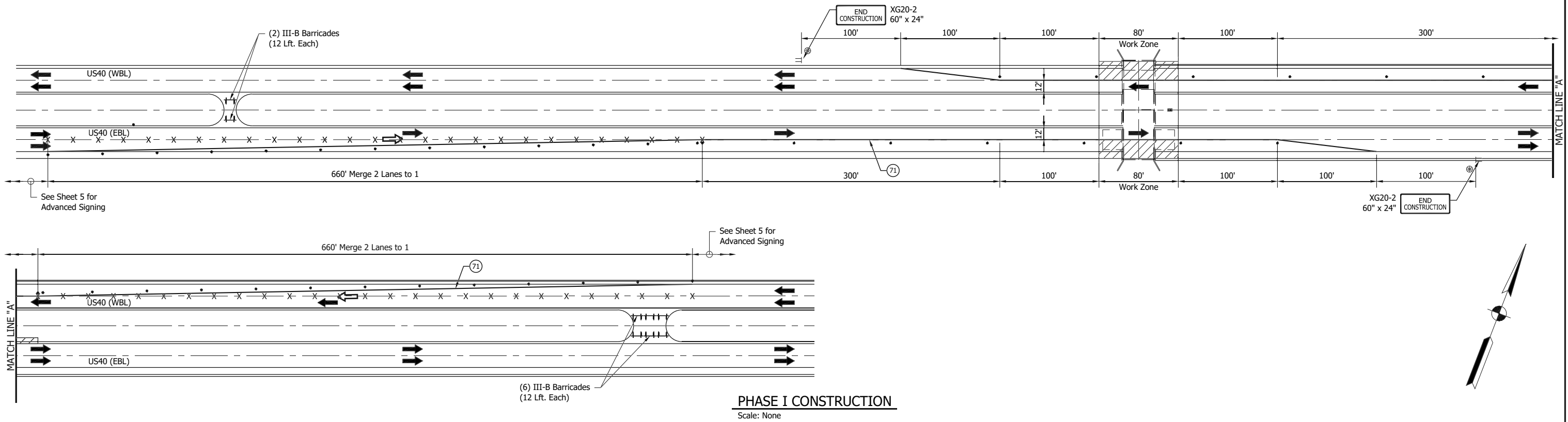
<p>RECOMMENDED FOR APPROVAL _____ DESIGN ENGINEER DATE</p>	<p>DESIGNED: <u>RMM</u> DRAWN: <u>DRD</u></p> <p>CHECKED: <u>REB</u> CHECKED: <u>REB</u></p>	<p>INDIANA DEPARTMENT OF TRANSPORTATION</p> <p>INDEX SHEET</p>	<p>HORIZONTAL SCALE N/A</p> <p>VERTICAL SCALE N/A</p> <p>DRAWING of</p> <p>CONTRACT B-42911</p>	<p>BRIDGE FILE 040-67-01838C</p> <p>DESIGNATION 1601094</p> <p>SHEET 2 of 8</p> <p>PROJECT 1601094</p>
--	--	---	---	--



EXISTING TYPICAL SECTION
 Sta. 1323+55.00 To Sta. 1324+75.00
 Sta. 1325+49.00 To Sta. 1326+69.00
 ** Shoulder Varies from 4' @ sta. 1323+55.75 to 7' @ sta. 1324+75.00
 Shoulder Varies from 7' @ sta. 1375+49.00 to 4' @ sta. 1326+69.00

Guardrail shown right, see general plan for limits

		RECOMMENDED FOR APPROVAL _____ DESIGN ENGINEER DATE	INDIANA DEPARTMENT OF TRANSPORTATION	HORIZONTAL SCALE N/A	BRIDGE FILE 040-67-01838C
		DESIGNED: <u>RMM</u> DRAWN: <u>DRD</u>		VERTICAL SCALE N/A	DESIGNATION 1601094
		CHECKED: <u>REB</u> CHECKED: <u>REB</u>		DRAWING of	SHEET 3 of 8
				TYPICAL APPROACH SECTIONS	CONTRACT B-42911



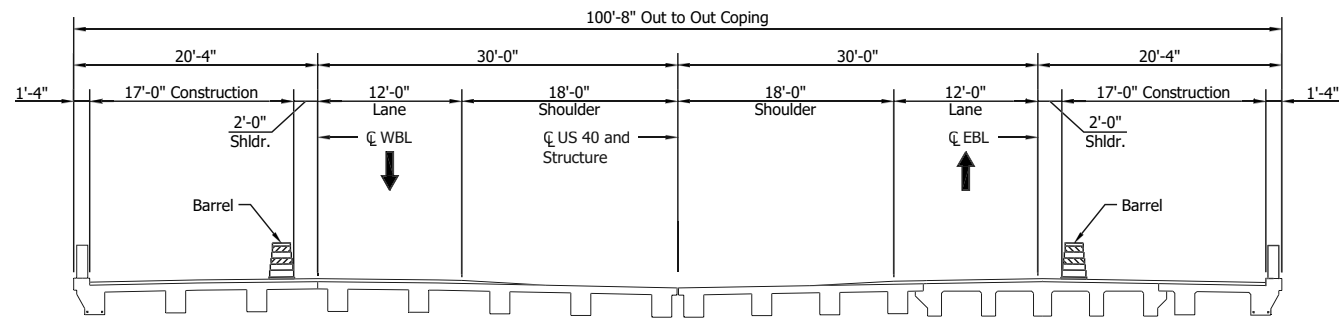
LEGEND

- INDICATES CONSTRUCTION AREA.
- INDICATES DIRECTION OF TRAFFIC - PRIMARY.
- INDICATES FLASHING ARROW SIGN.
- INDICATES TEMPORARY REMOVABLE, 5" (BLACK TAPE) TO BE USED IN LIEU OF REMOVING EXISTING PAVMENT MARKING.
- INDICATES LOW INTENSITY FLASHING YELLOW LIGHT, TYPE A
- INDICATES STANDARD DRUM (SEE STANDARD DRAWING E801-TCLG-01 FOR SPACING)
- INDICATES DIRECTION OF TRAFFIC - SECONDARY
- INDICATES STANDARD BARRICADE TYPE III-B
- TEMPORARY PAVMENT MARKING, REMOVABLE, SOLID, WHITE, 4"

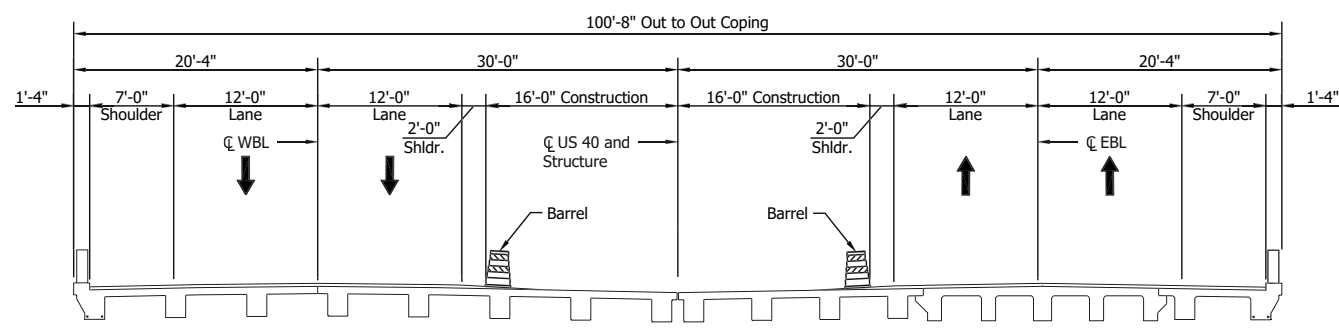
TRAFFIC MAINTENANCE DESIGNED FOR A 55 MPH SPEED, POSTED FOR 45 MPH.

	RECOMMENDED FOR APPROVAL _____ DESIGN ENGINEER DATE	INDIANA DEPARTMENT OF TRANSPORTATION	HORIZONTAL SCALE N/A VERTICAL SCALE N/A	BRIDGE FILE 040-67-01838C DESIGNATION 1601094
	DESIGNED: RMM DRAWN: DRD CHECKED: REB CHECKED: REB	TRAFFIC MAINTENANCE DETAILS	DRAWING of 4 CONTRACT B-42911	SHEET of 8 PROJECT 1601094

PRINT DATE: 4/21/20 PLOT SCALE: 1:1 EDIT DATE: 7/12/11 - 8:40 AM EDITED BY: RMCCLIMANS DRAWING FILE: P:\175-600-003-2 US40 BRIDGE REMA\ACAD\05 MDT\SH1_MOT_02_01-REV.DWG

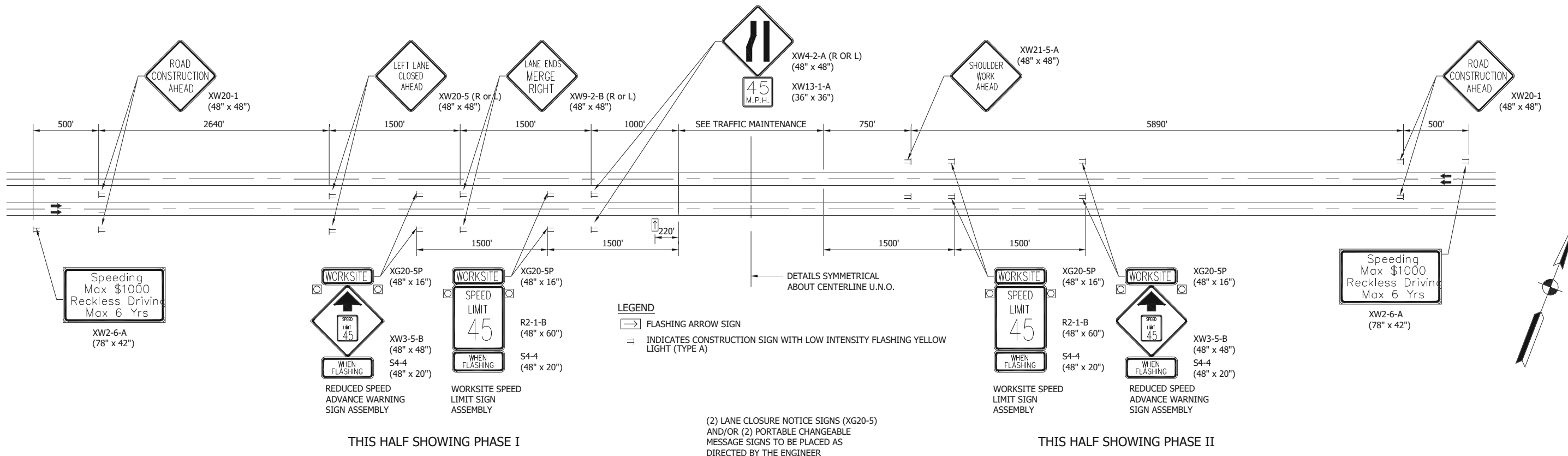


TYPICAL SECTION - PHASE I
Scale: 1/8" = 10'-0"



TYPICAL SECTION - PHASE II
Scale: 1/8" = 10'-0"

MAINTENANCE OF TRAFFIC QUANTITIES	
MAINTAINING TRAFFIC	1 LSUM
CONSTRUCTION SIGN, A	26 EACH
FLASHING ARROW SIGN	200 DAYS
TEMPORARY WORKSITE SPEED LIMIT SIGN ASSEMBLY	8 EACH
TEMPORARY PAVEMENT MARKING, REMOVABLE, 5 IN. BLACK	1,320 LFT.
TEMPORARY PAVEMENT MARKING, REMOVABLE, 4 IN.	2,680 LFT.
PORTABLE, CHANGEABLE MESSAGE SIGN	2 EACH
III-B BARRICADE	96 LFT.



THIS HALF SHOWING PHASE I

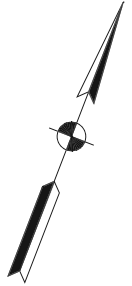
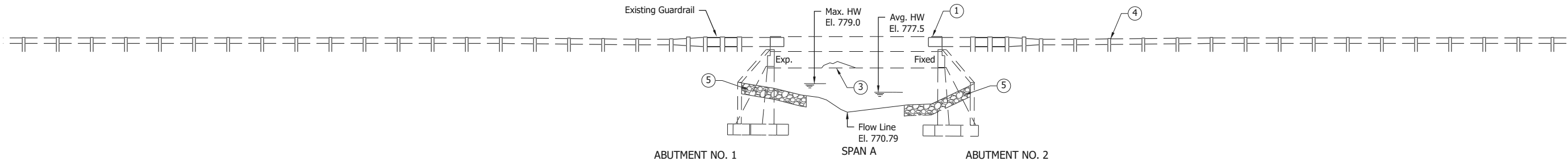
THIS HALF SHOWING PHASE II

(2) LANE CLOSURE NOTICE SIGNS (XG20-5)
AND/OR (2) PORTABLE CHANGEABLE
MESSAGE SIGNS TO BE PLACED AS
DIRECTED BY THE ENGINEER

ADVANCED SIGNING
Scale: NONE

RECOMMENDED FOR APPROVAL _____ 7/25/2017 DATE	INDIANA DEPARTMENT OF TRANSPORTATION	HORIZONTAL SCALE	BRIDGE FILE
DESIGNED: RMM DRAWN: DRD		N/A	040-67-01838C
CHECKED: REB CHECKED: REB	TRAFFIC MAINTENANCE DETAILS	VERTICAL SCALE	DESIGNATION
		N/A	1601094
		SURVEY BOOK	SHEET
			5 of 8
		CONTRACT	PROJECT
		B-42911	1601094

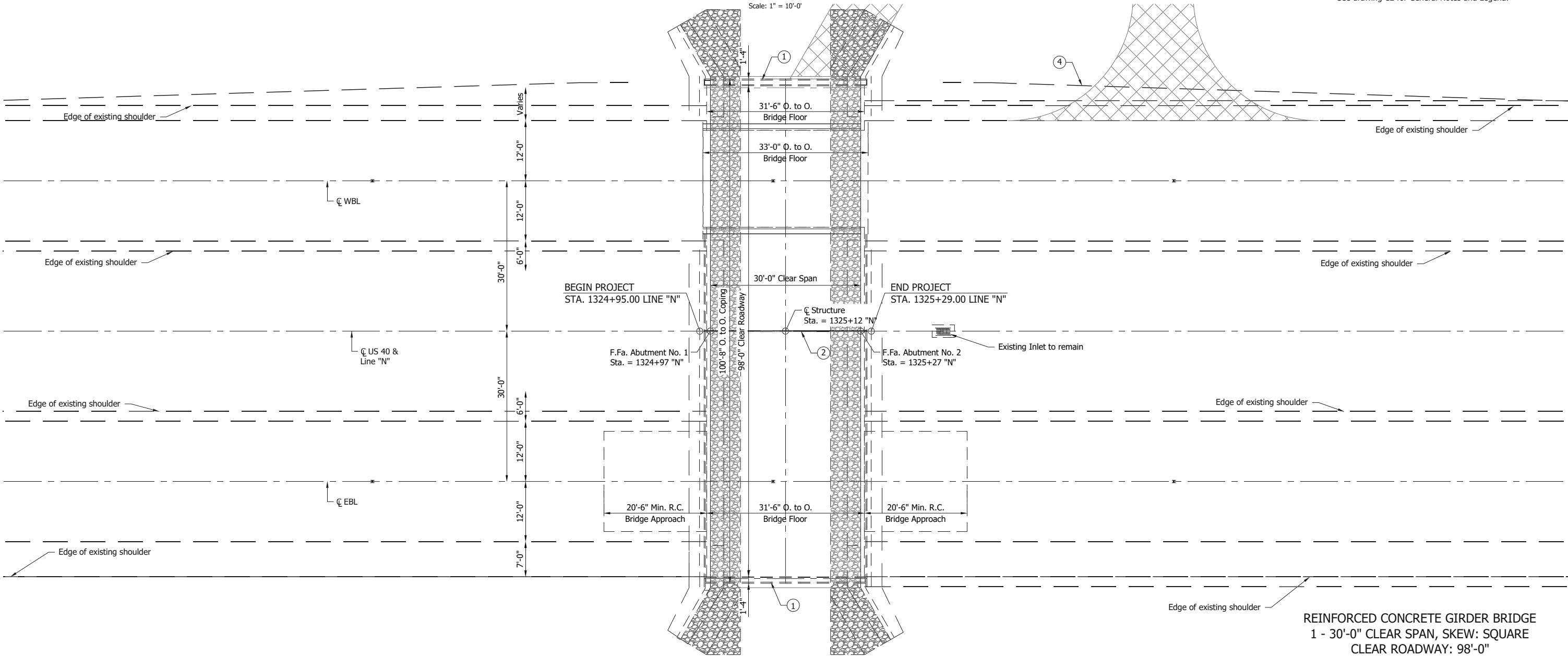
STRUCTURE BUILT TO A +0.57% GRADE



NOTE:
See drawing C2 for General Notes and Legend.

ELEVATION

Scale: 1" = 10'-0"

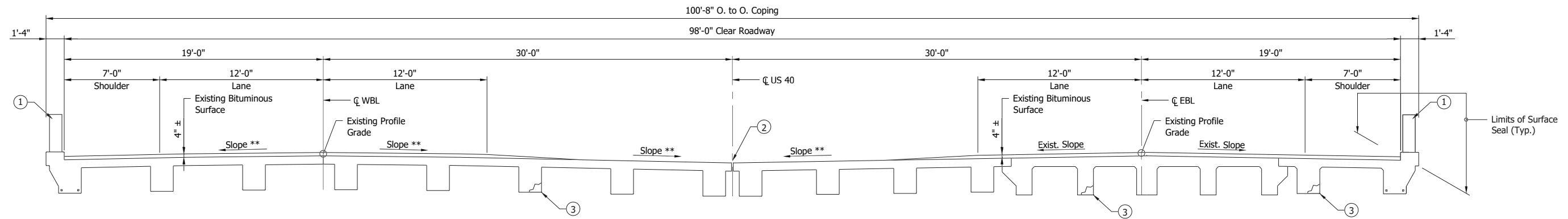


PLAN VIEW

Scale: 1" = 10'-0"

REINFORCED CONCRETE GIRDER BRIDGE
1 - 30'-0" CLEAR SPAN, SKEW: SQUARE
CLEAR ROADWAY: 98'-0"
US 40 OVER SALLUST BRANCH CREEK
PUTNAM COUNTY

	RECOMMENDED FOR APPROVAL _____	INDIANA DEPARTMENT OF TRANSPORTATION	HORIZONTAL SCALE	BRIDGE FILE	
	DESIGN ENGINEER _____		DATE _____	N/A	040-67-01838C
	DESIGNED: RMM		DRAWN: DRD	VERTICAL SCALE	DESIGNATION
	CHECKED: REB		CHECKED: REB	N/A	1601094
GENERAL PLAN			DRAWING	SHEET	
			C1 of C2	7 of 8	
			CONTRACT	PROJECT	
			B-42911	1601094	



TYPICAL SECTION

Scale: 1/4" = 1'-0"

GENERAL NOTES:

Plans for the existing structure are on file in the Central Office of the Indiana Department of Transportation as bridge files: 040-67-01838, 040-67-01838A and 040-67-01838B.

Stationing, elevations and dimensions shown in these plans are based on the existing plans and are for reference only.

Reinforcing bar cover shall be 2 1/2" min. in top and 1" min. in bottom of bridge deck and 2" in all other locations unless noted otherwise.

Removal of unsound concrete shall be as directed by the Engineer. It is the intent of these plans that all unsound concrete be removed.

Epoxy Resin Adhesive shall be used where new concrete abuts existing concrete.

Surface Seal all exposed surfaces of the new concrete bridge railing, bridge railing transitions and the new approach slabs.

All pavement markings disturbed during construction shall be replaced in kind.

Where new work is to be fitted to old work, the contractor shall check all elevations, dimensions and conditions in the field and report any errors or discrepancies to the engineer and assume responsibility for the fit of the new part to old.

DESIGN DATA:

DESIGN STRENGTHS:
 Class "C" Concrete $f_c = 4,000$ PSI
 Reinforcing Bars $f_y = 60,000$ psi

LIVE LOADS:
 Existing bridge designed for H20 with impact, with distribution of loads in accordance with the 1935 AASHTO Specifications, and all subsequent Interim specifications. (Slab designed for Single Live Load)

DEAD LOADS:
 Designed for actual dead load plus 15 psf for future wearing surface.
 Slab Designed with 1/2" wearing surface.

EXISTING HYDRAULIC INFO:

Q100 Elevation (Str.)	= 194 sq. ft.
Existing Road Overflow Waterway Area	= 0 sq. ft.
Existing Low Structure Elevation	= 791.98 ft.
Existing Backwater	= 0.68 ft.
Existing Headwater Elevation	= 778.90 ft.

LEGEND

- ① Patch existing concrete bridge railing (Est. 48 sft.) and portions of concrete curb, and surface seal (Est. 562 sft.) for limits shown on Typical Section.
- ② Clean existing joint at the centerline of structure, and place new Pre-Compressed Foam Joint. (Est. 33 lf.)
- ③ Patch existing reinforced concrete beams, abutments and wingwalls and Fiber wrap. (Est. 1,057 Sft. patching)
- ④ Remove and reset existing Guardrail as required to install haul road for work under existing structure. (Est. 65 Lft.)
- ⑤ Place 234 Tons Class I Riprap on 264 Sys. Geotextiles for Riprap type 1A for scour protection.

REINFORCED CONCRETE GIRDER BRIDGE
 1 - 30'-0" CLEAR SPAN, SKEW: SQUARE
 CLEAR ROADWAY: 98'-0"
 US 40 OVER SALLUST BRANCH CREEK
 PUTNAM COUNTY

	RECOMMENDED FOR APPROVAL _____ DESIGN ENGINEER DATE	INDIANA DEPARTMENT OF TRANSPORTATION	HORIZONTAL SCALE N/A BRIDGE FILE 040-67-01838C
	DESIGNED: <u>RMM</u> DRAWN: <u>DRD</u>	GENERAL PLAN DETAILS	VERTICAL SCALE N/A DESIGNATION 1601094
	CHECKED: <u>REB</u> CHECKED: <u>REB</u>		DRAWING SHEET C2 of C2 8 of 8
			CONTRACT PROJECT B-42911 1601094