

Public Information Meeting

US 31 and Tannehill Road / Bear Lane Improvements

Taylorsville, Indiana

April 13, 2022



 **NextLevel**
INDIANA

Meeting Objectives



Adam Burns

Consultant Project Manager
CMT | Engineers and Consultants
aburns@cmtengr.com
317.492.9159

- Communicate the need for the project
- Review studied alternatives and outcomes
- Present schedule
- Solicit feedback from stakeholders



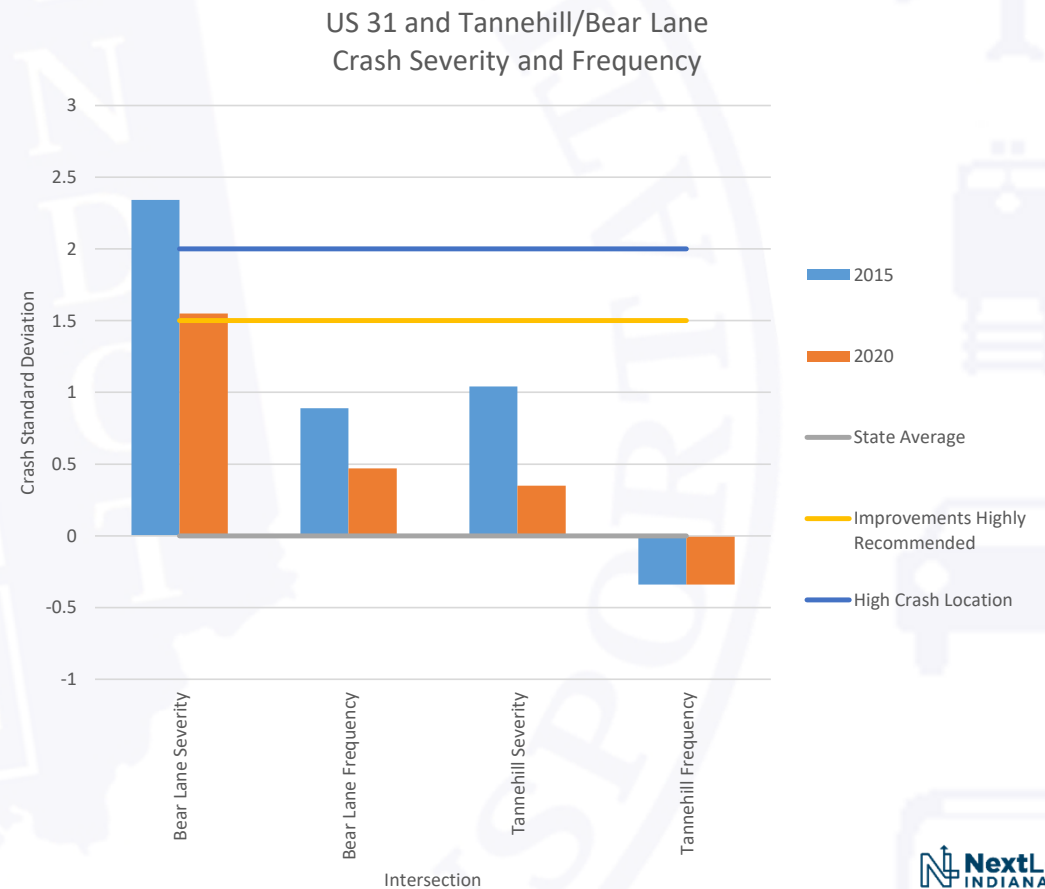
Need and Purpose

Need

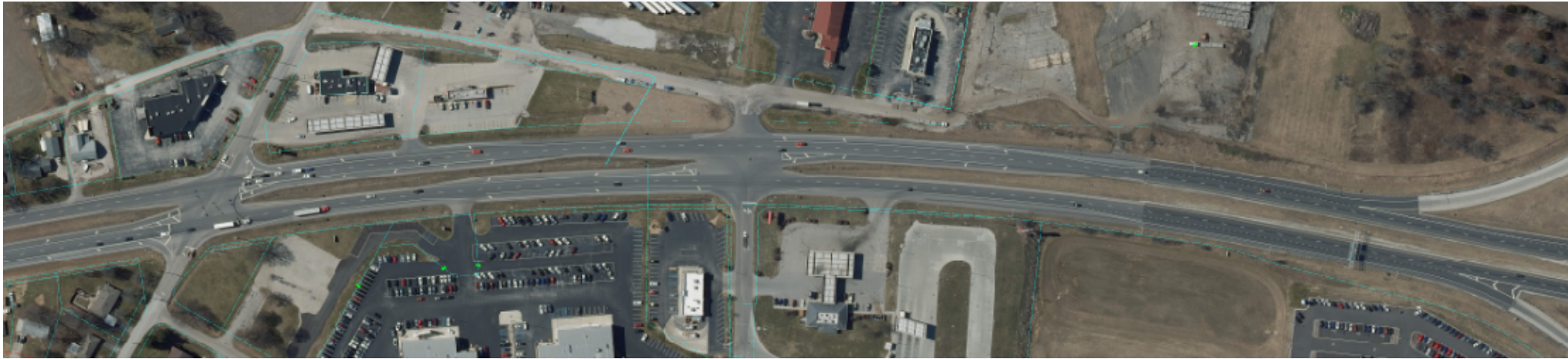
- Severe vehicle crash rates at Bear Lane
- Higher than average vehicle crash rates at Tannehill Road

Purpose

- Reduce vehicle crash rates along US 31 throughout the project.



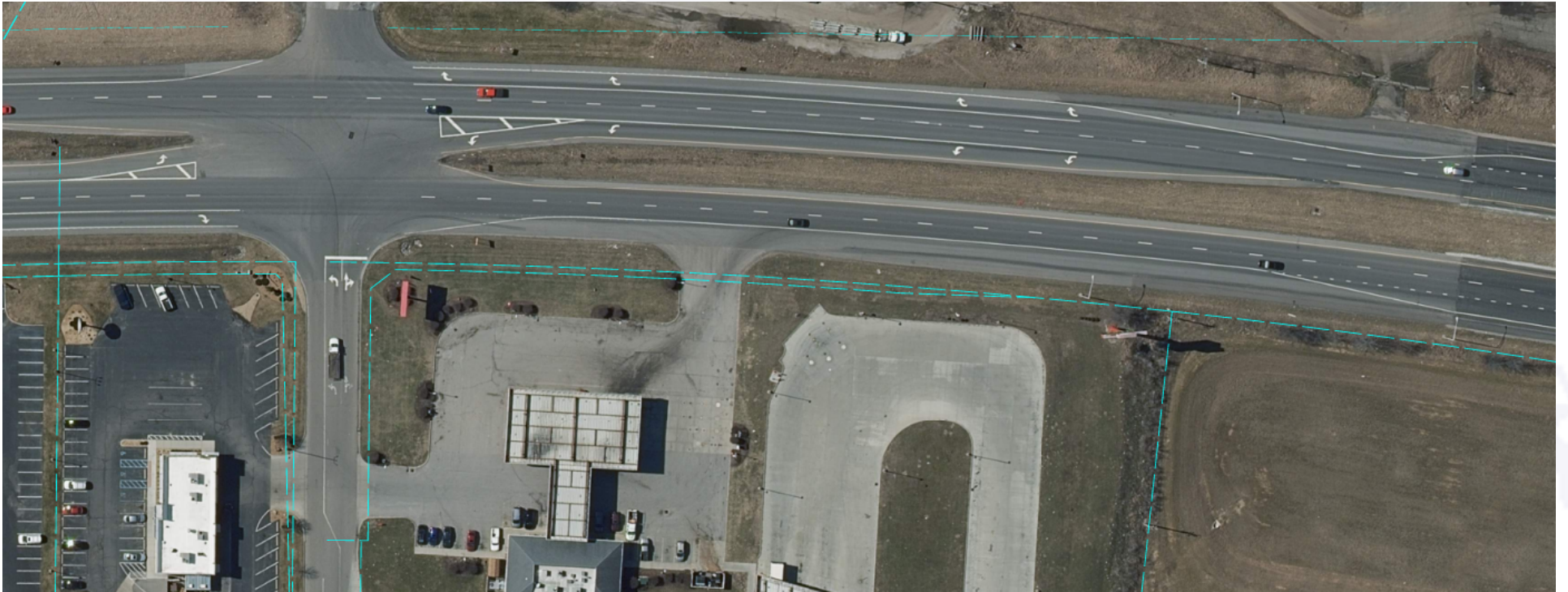
Existing Project Conditions



Existing Project Conditions – I-65 NB Off Ramp



Existing Project Conditions – Bear Lane



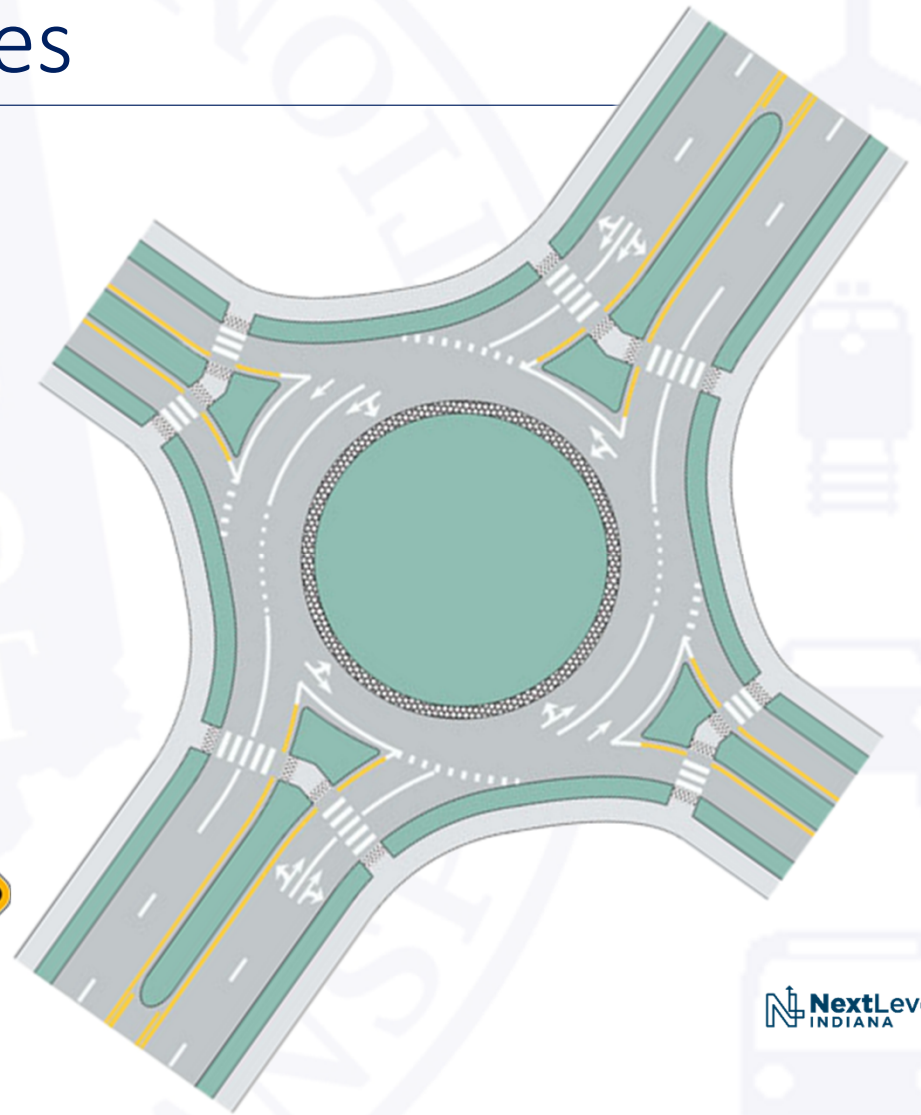
Existing Project Conditions – Tannehill Road



I-65 Off Ramp Modification

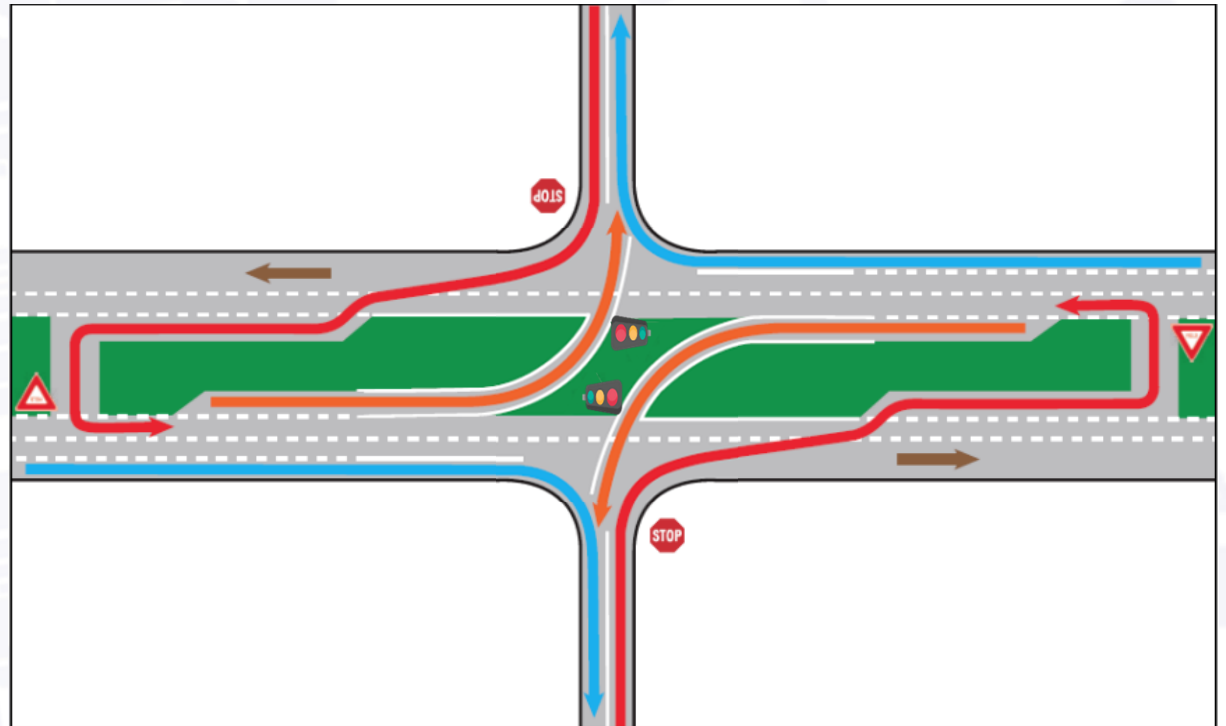


Tannehill Road Alternatives



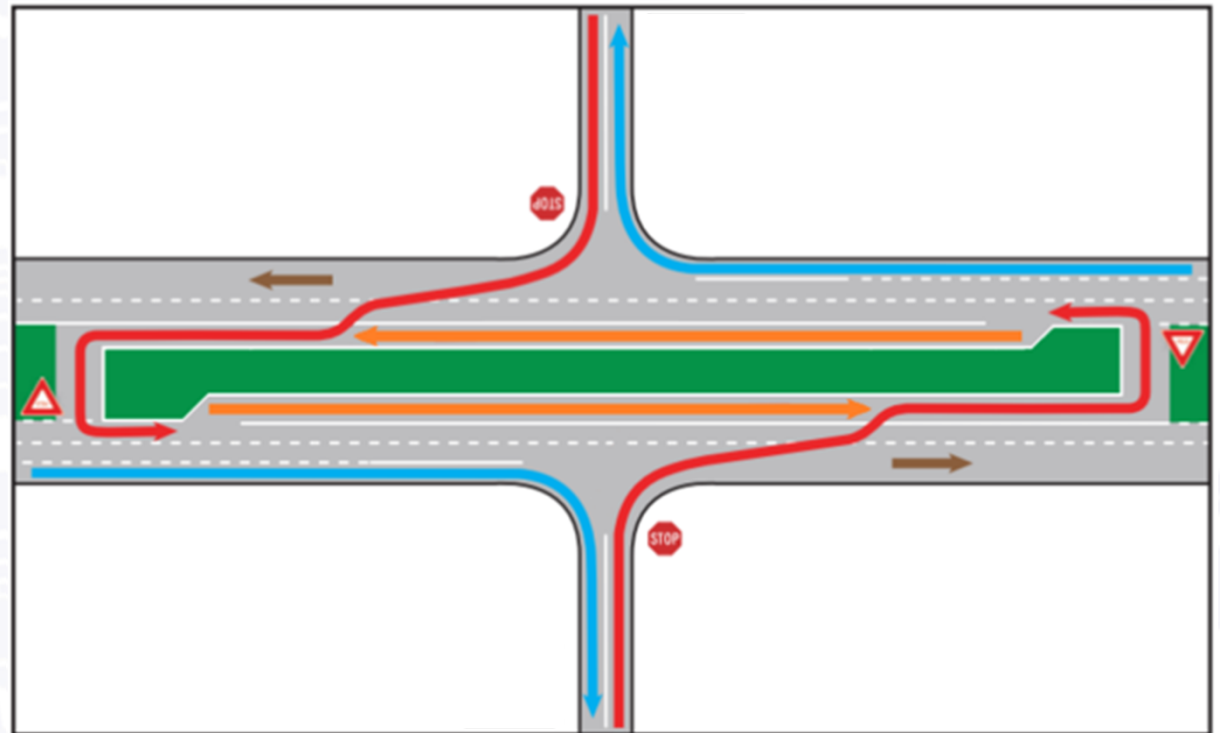
Tannehill Road Alternatives

- Left Turns and crossing minor road are made using U-Turn movement on major road.
- Left turns from major road are made under traffic signal



Bear Lane Alternatives

- Left Turns and crossing minor road are made using U-Turn movement on major road.
- Left turns from major road are made using U-Turn movement on major road.

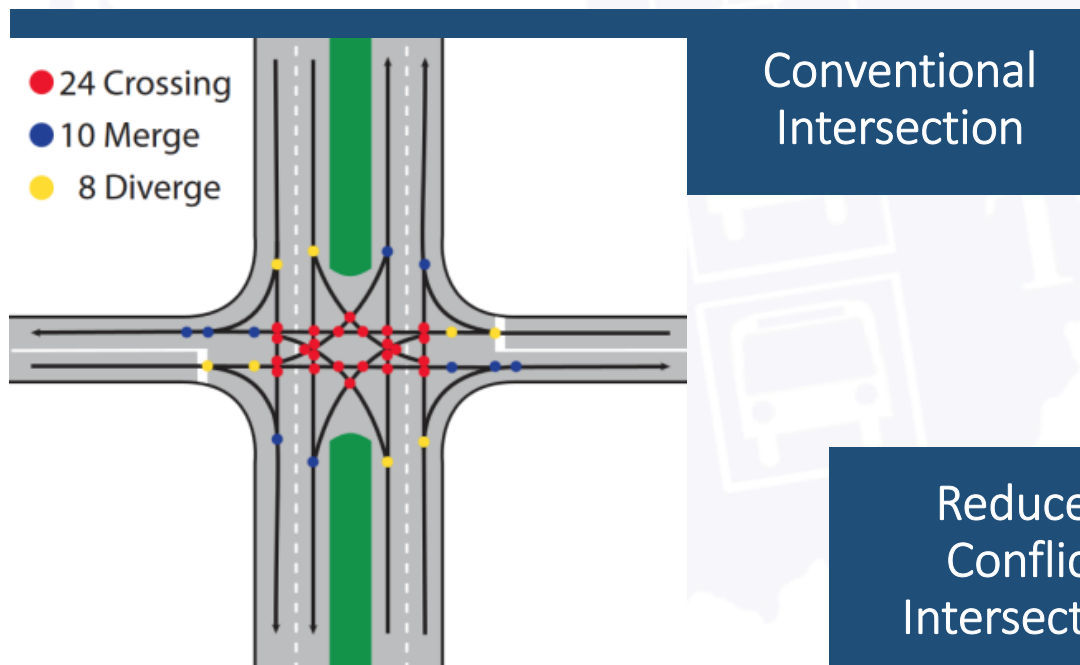


Alternatives Review

Alternative	Crash Reduction	Vehicle Delay (sec/veh)		Cost/Benefit	Property Acquisition (acres)	Construction Cost
No Build	n/a	C	15.4	0.0	0.0	n/a
Roundabout	24.0%	C	23.2	0.87	3.5	\$6,265,000
Reduced Conflict Intersection	20.0%	B	10.7	0.69	0.0	\$3,121,000
Traffic Safety Measures	4.9%	C	15.4	0.0	0.0	\$301,100

Why Reduced Conflict Intersections Work

- Conflict Points are dramatically reduced
 - Crossing Movements (most dangerous) are reduced most
 - Merge/Diverge Movements are typically least significant

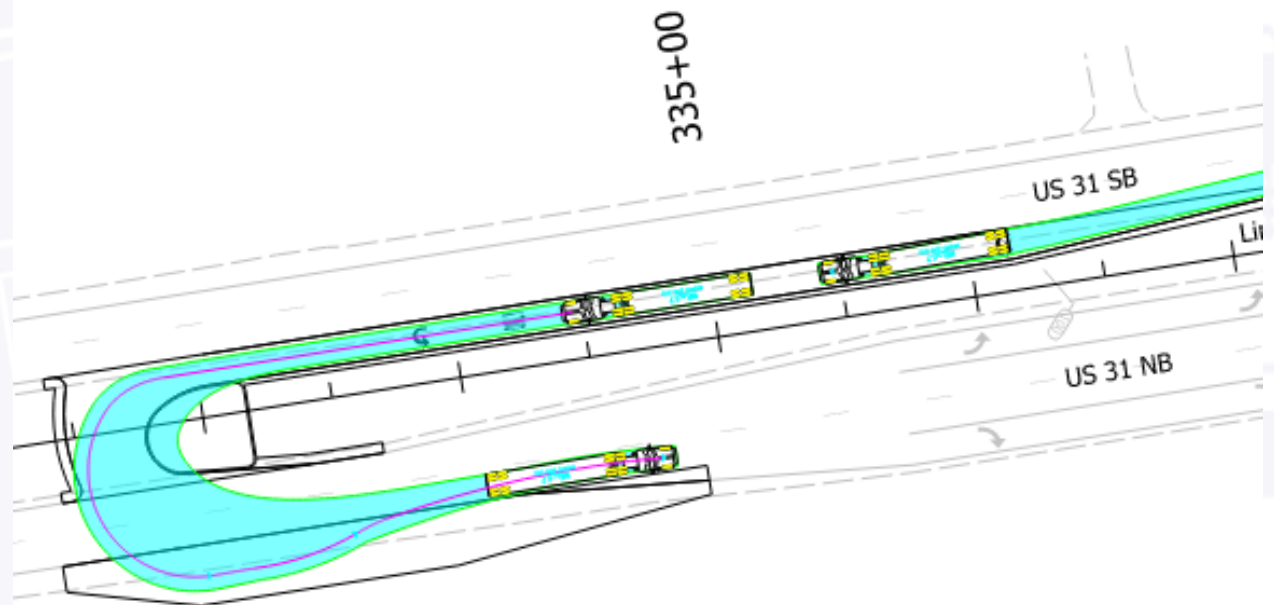


Statewide Case Studies

STATEWIDE RCI CRASH STATISTICS				
	US 30 & SR 101	US 41 & SR 114	US 231 & SR 68	US 231 & SR 62
Crashes before RCI	13	22	16	5
Injuries/Fatalities before RCI	7	9	7	4
Crashes after RCI	3	7	5	2
Injuries/Fatalities after RCI	0	1	3	0
Crash Reduction	77%	68%	69%	60%
Injury/Fatality Reduction	100%	89%	57%	100%

How do Trucks use RCIs

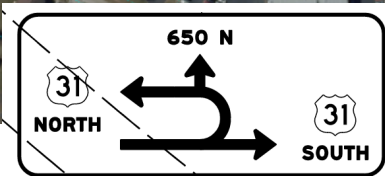
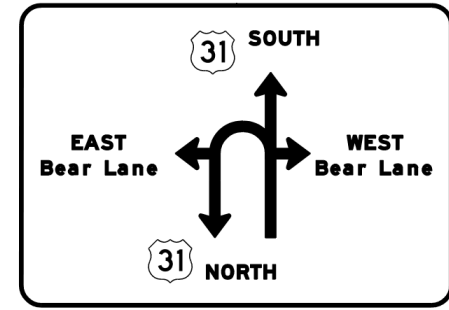
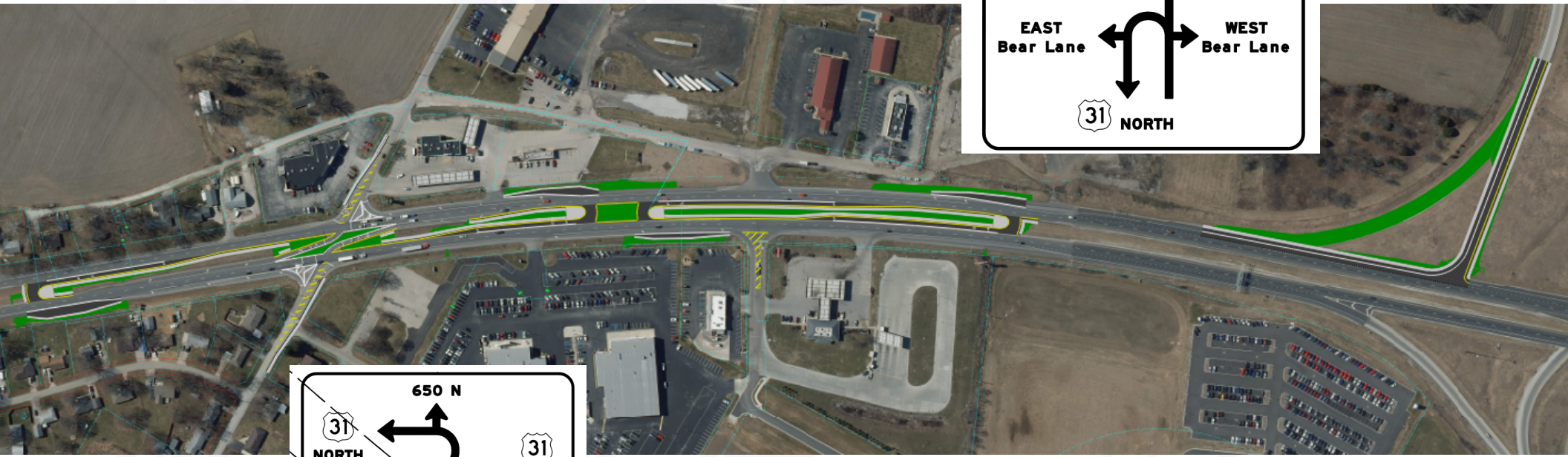
- Semi trucks will use U-turn and storage lane to yield.
- Semi trucks will use pavement blisters to complete turning movement.



Truck Turning Case Study



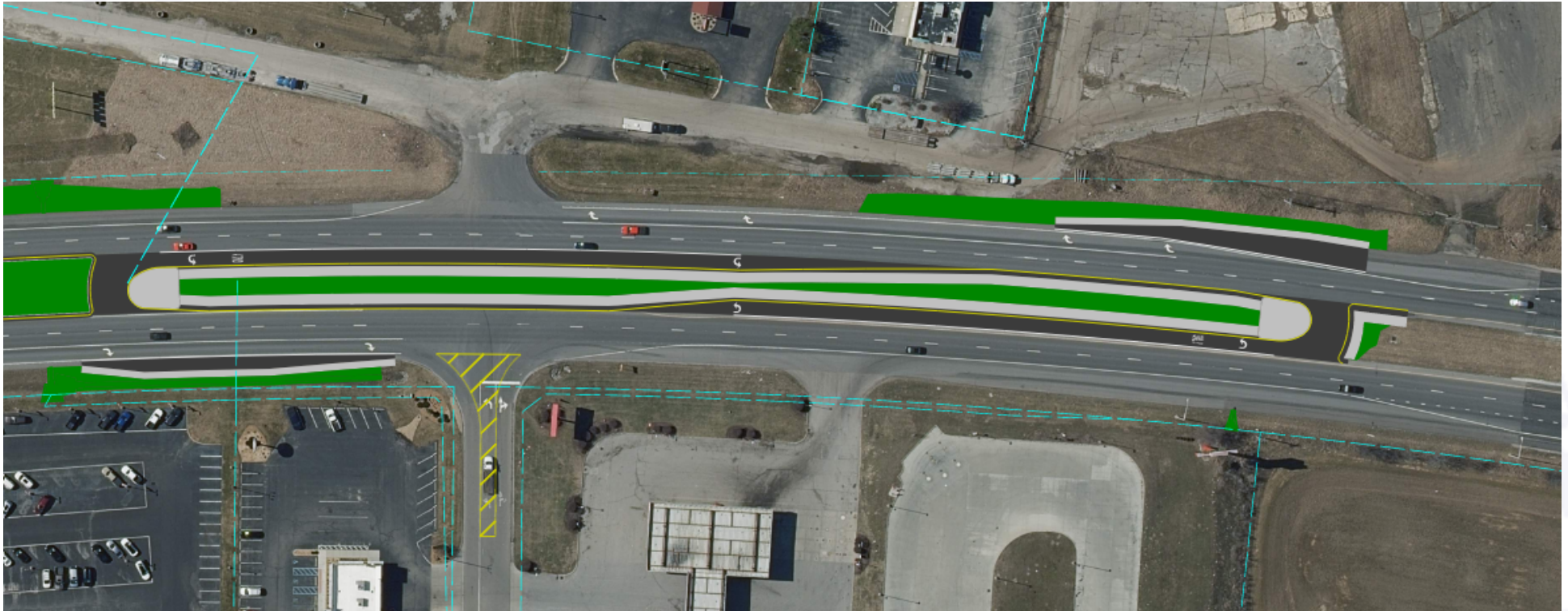
Preliminary Preferred Alternative



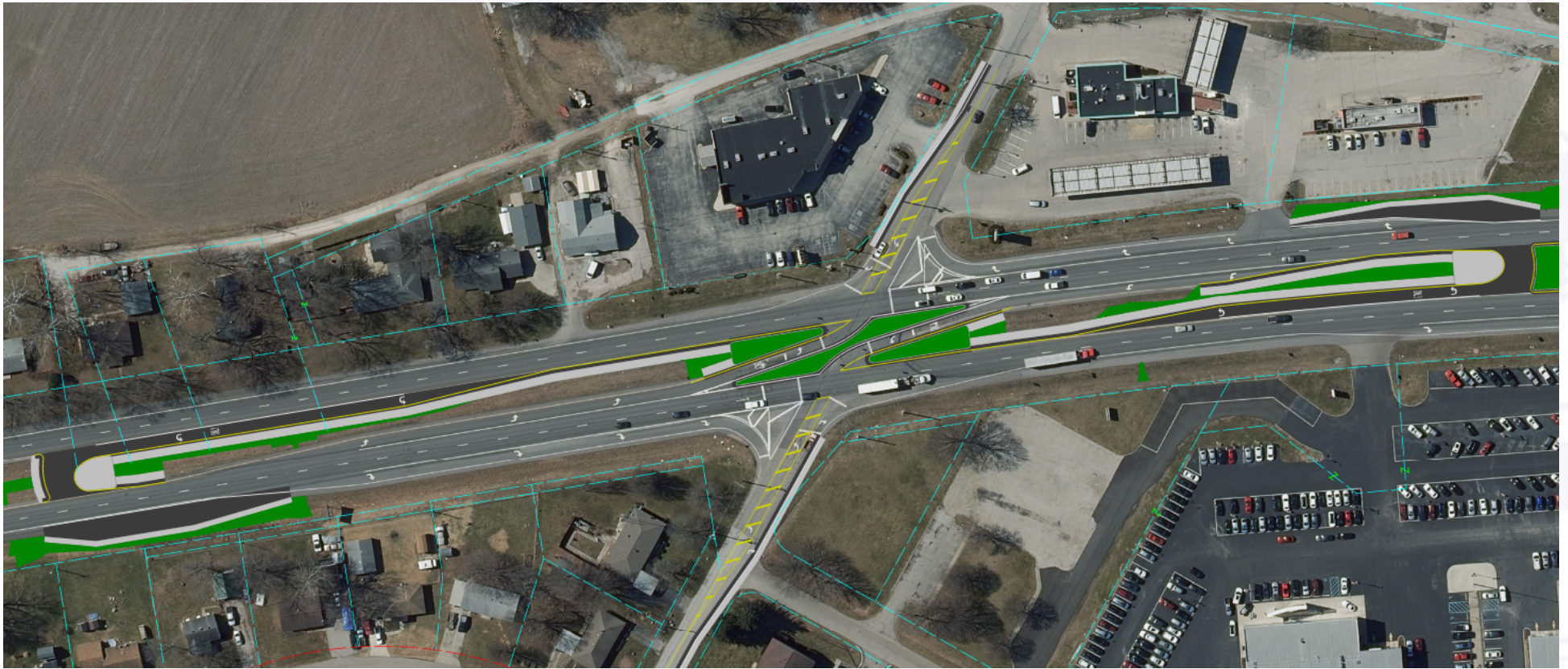
I-65 Off Ramp Modification



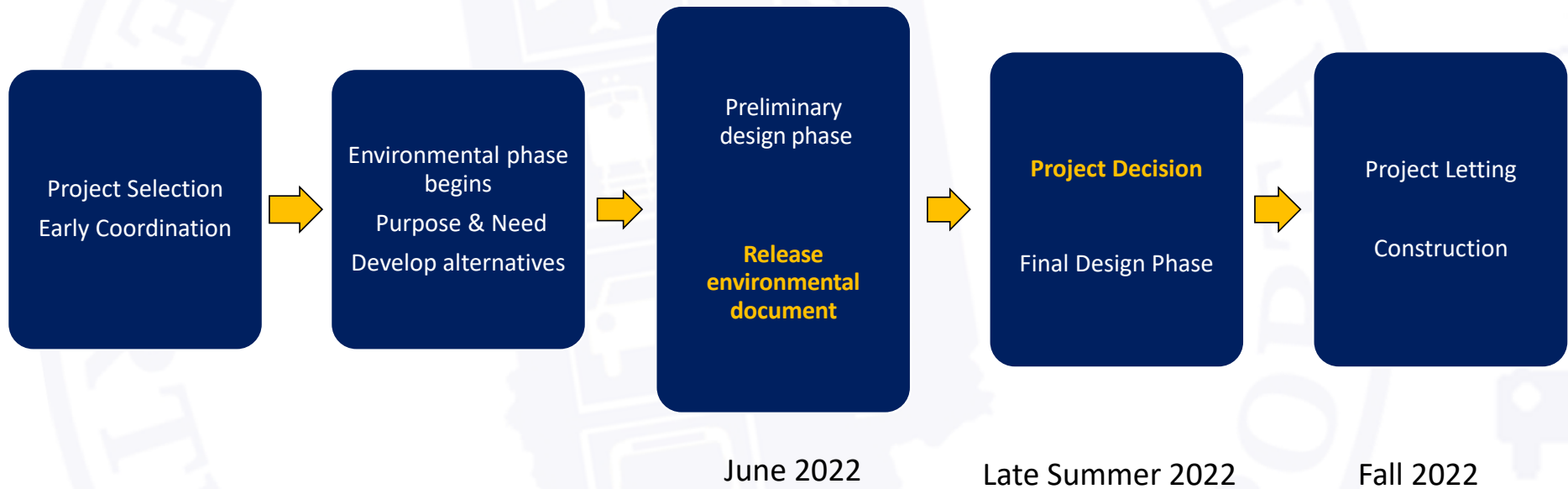
Bear Lane Alternatives



Tannehill Road Alternatives



Project Schedule



Opportunities for Feedback



Adam Burns

Consultant Project Manager
CMT | Engineers and Consultants
aburns@cmtengr.com
317.492.9159

By email:

aburns@cmtengr.com



Questions?



Staying in Touch

INDOT Seymour District:

seymour.indot.in.gov



Project Alerts and Updates

alerts.indot.in.gov

