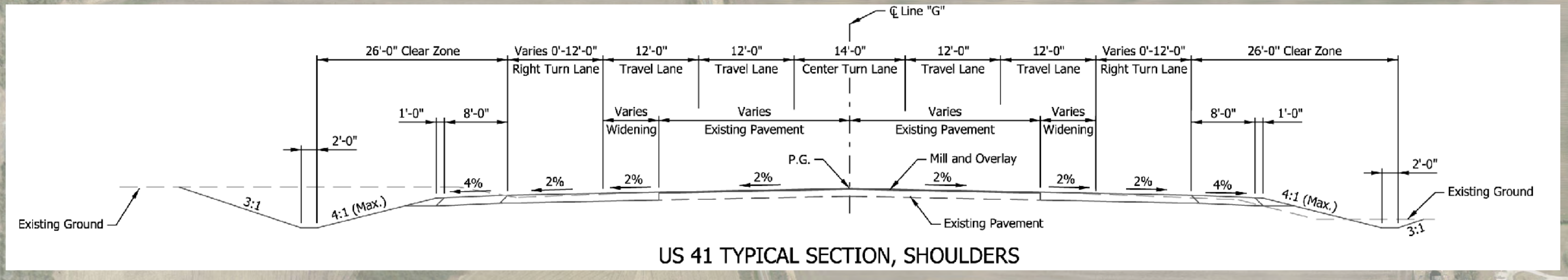
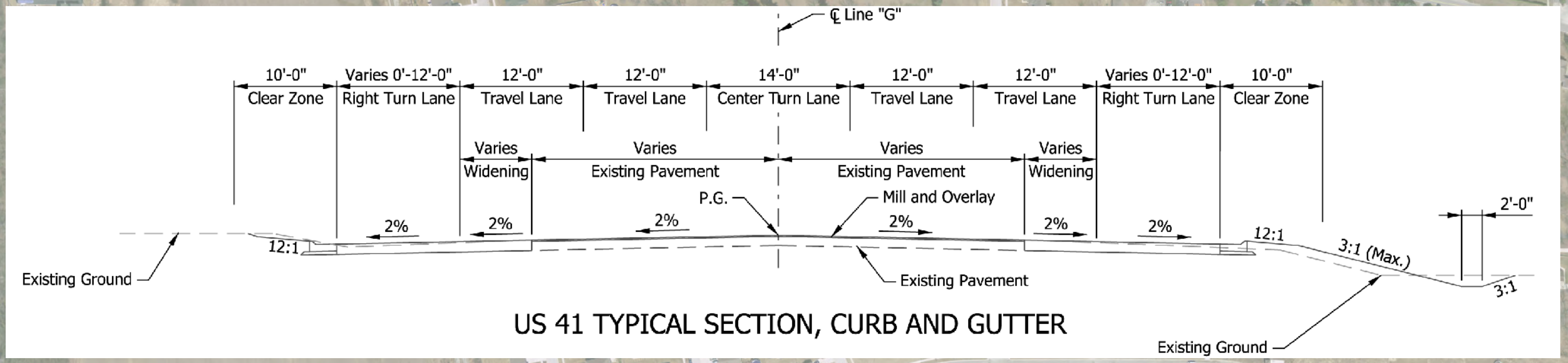
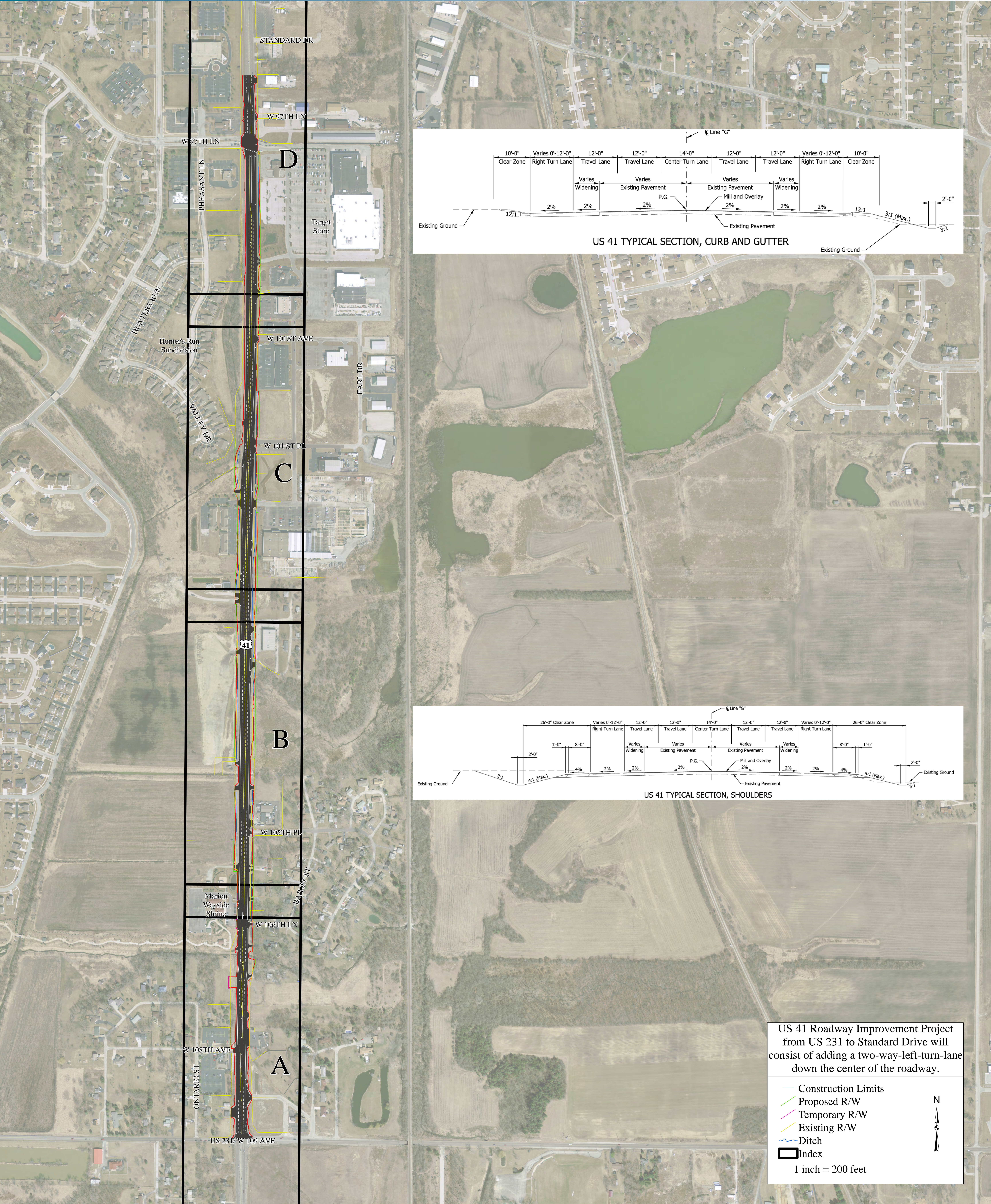


U.S. 41 Roadway Improvement Project



US 41 Roadway Improvement Project from US 231 to Standard Drive will consist of adding a two-way-left-turn-lane down the center of the roadway.

- Construction Limits
- Proposed R/W
- Temporary R/W
- Existing R/W
- ~ Ditch
- Index

1 inch = 200 feet