



PUBLIC INFORMATION MEETING

US 20 Widening for a Two-Way Left Turn Lane (TWLTL)

Section 1: from SR 39 to Fail Road (3 miles)

Section 2: from CR 300 E to CR 500 East (2.25 miles)

in LaPorte County

Thursday, April 29th, 2021





AGENDA

US 20 Widening for TWLTL

- Project Team
- Welcome / Opening Remarks
- Public Information Meeting
- Environmental Process
- Project Overview
- Project Schedule
- Q&A



TEAM OVERVIEW

US 20 Widening for TWLTL



Amber Thomas

INDOT Senior Project Manager, LaPorte District
athomas2@indot.in.gov
219-344-0046



Adam Parkhouse

INDOT Director of Communications, Northwest District
aparkhouse@indot.in.gov
219-325-7526



Carly Sheets, PE, PTOE

BF&S Project Manager, Road Design



Chris Wheatley, PE

BF&S QA/QC Manager, Road Design



Ryan Scott

BF&S Environmental Studies Manager



Hannah Deguch

BF&S Environmental Studies



THANK YOU for taking time out of your day to partner with INDOT on the US 20 Two-way Left Turn Lanes. Your insight and understanding is ***valuable and critical*** to the success of this project!





PURPOSE OF MEETING

US 20 Widening for TWLTL

- Share information about the project
- Provide feedback
- Ask questions





Ways to provide feedback:



Fill out a comment form



Email team member



Call a team member



Visit INDOT website

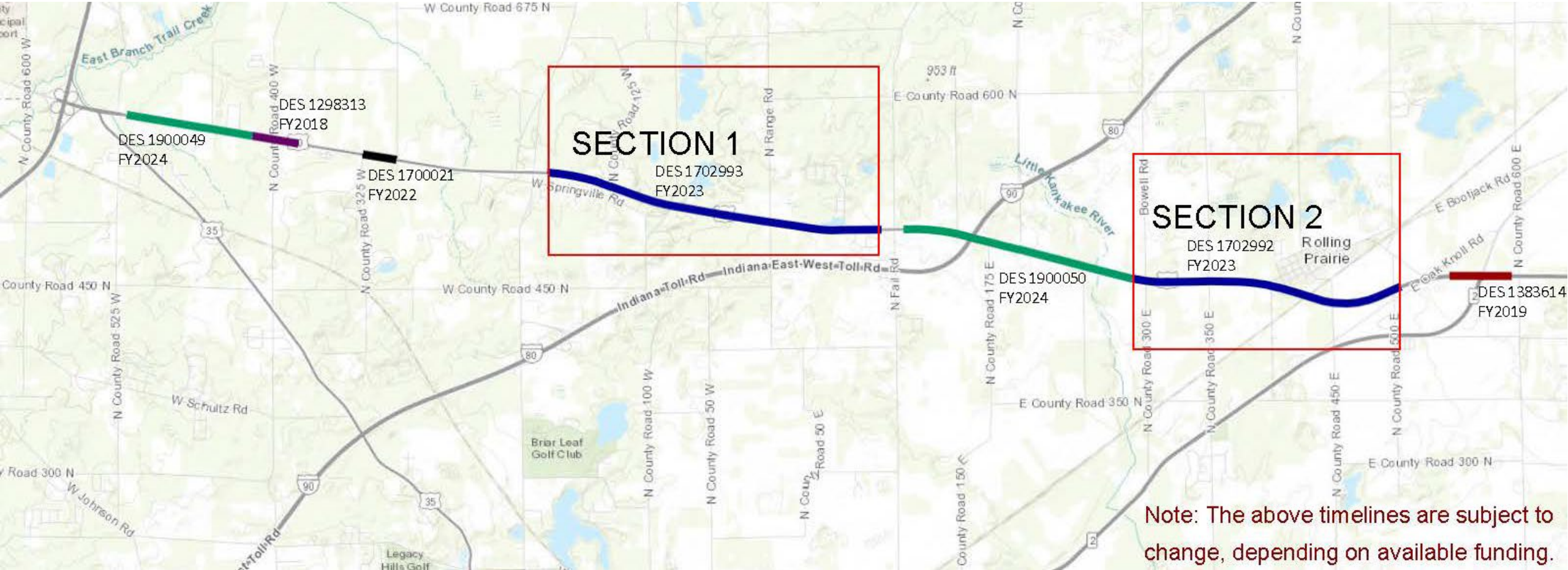


Please Submit comments by May 14, 2021



US 20 OVERVIEW

US 20 Widening for TWLTL



NEPA - National Environmental Policy Act of 1970

- Required for all federally funded highway improvements
- Level of review based on location and scope

Levels:

Categorical Exclusion* < Environmental Assessment < Environmental Impact Statement

**This project will be processed as a Categorical Exclusion (CE)*



GENERAL PROCESS

Verify Purpose and Need (P&N) of Project

Consider Alternatives to meet P&N

(including “Do Nothing”)

Assess resources present

- Social, economic, cultural and natural resources



GENERAL PROCESS (cont.)

Select preliminary preferred alternative

Schedule public information meetings & get feedback

Coordinate with local/state/federal resource agencies

Design to avoid/minimize/mitigate for project impacts



GENERAL PROCESS (cont.)

Obtain INDOT approval of Draft CE document

Offer Public Hearing for Preferred Alternative

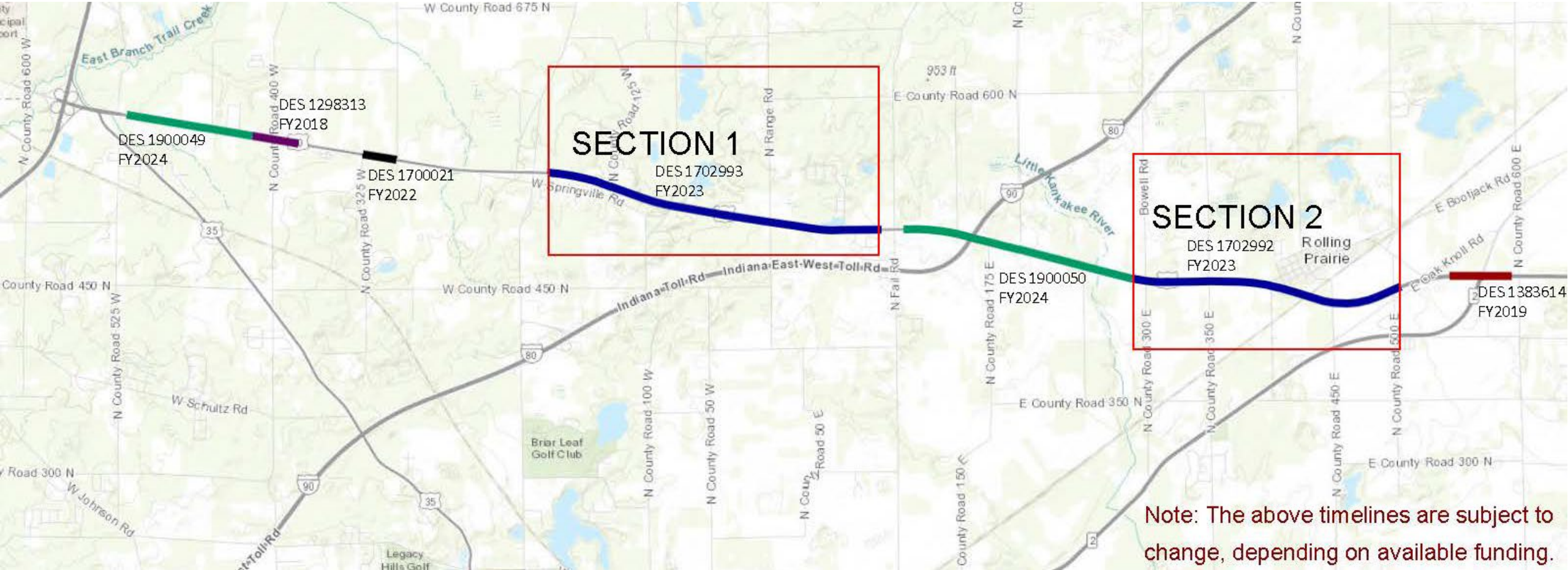
Finalize plans based on public hearing input

Submit Final CE document after Hearing Certification



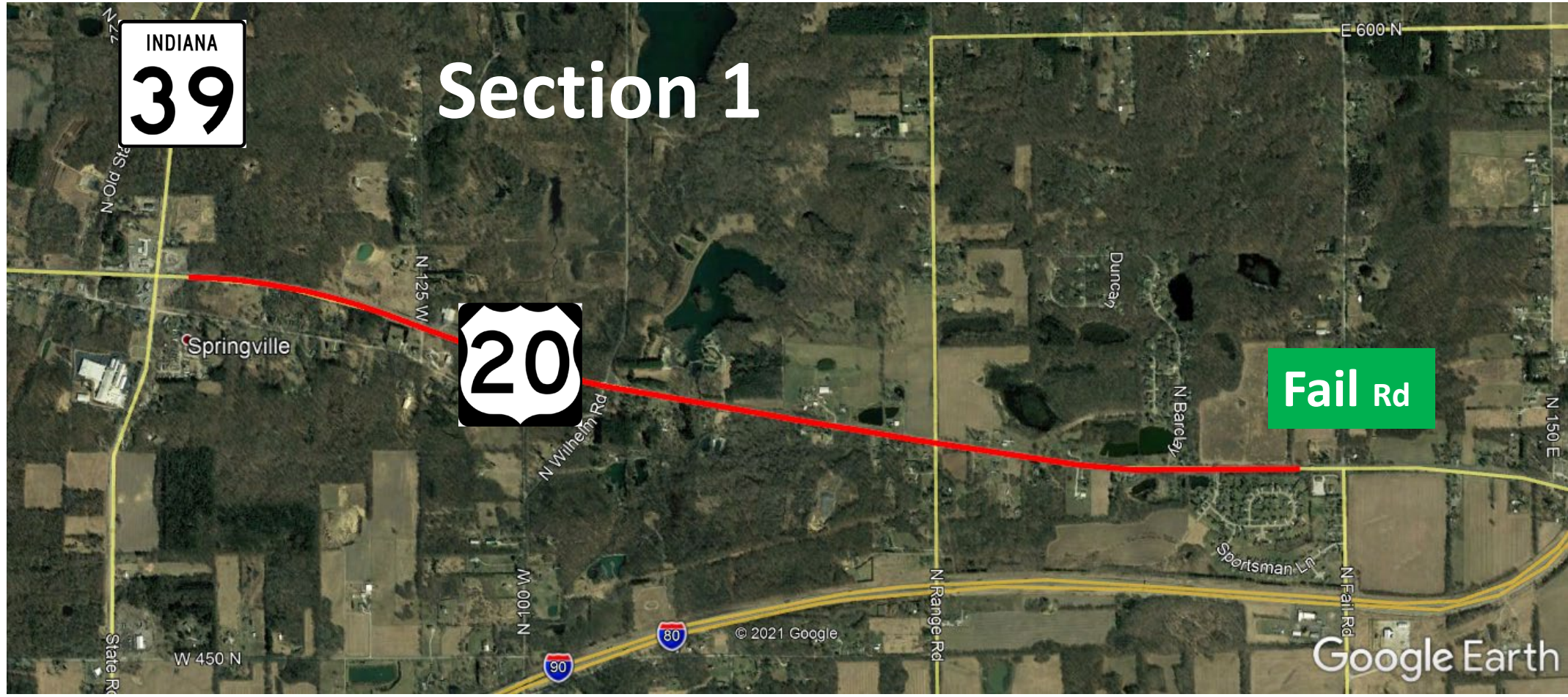
PROJECT LOCATIONS

US 20 Widening for TWLTL



PROJECT LOCATIONS

US 20 Widening for TWLTL



PROJECT LOCATIONS

US 20 Widening for TWLTL



EXISTING CONDITIONS

US 20 Widening for TWLTL

- 4 Lane Highway
- 4-ft Median
- Variable Shoulder Widths
- Guardrail
- Rumble Grooving



- Same cross section since 1941
- **70% volume increase** from 2010 to 2016
- Increased volume = Increased crashes and severity



PROJECT PURPOSE: Improve project safety conditions for vehicle traffic on US 20

SAFETY BENEFITS

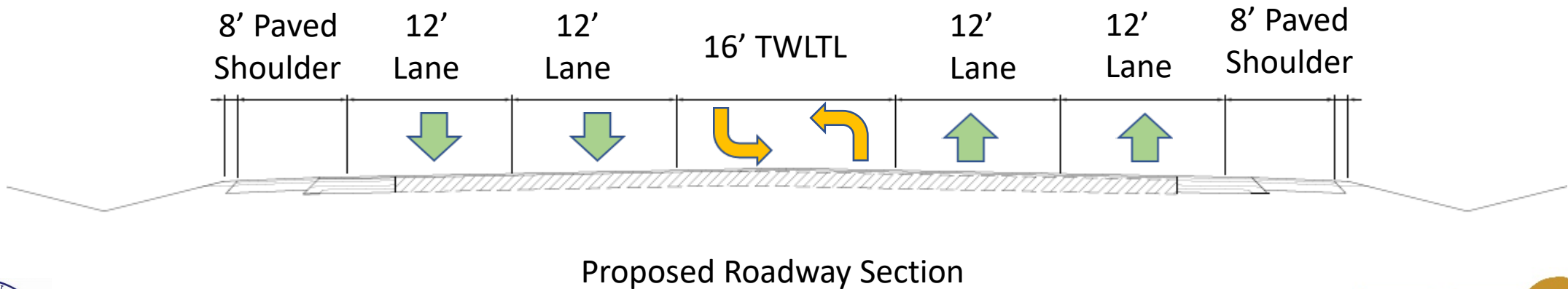
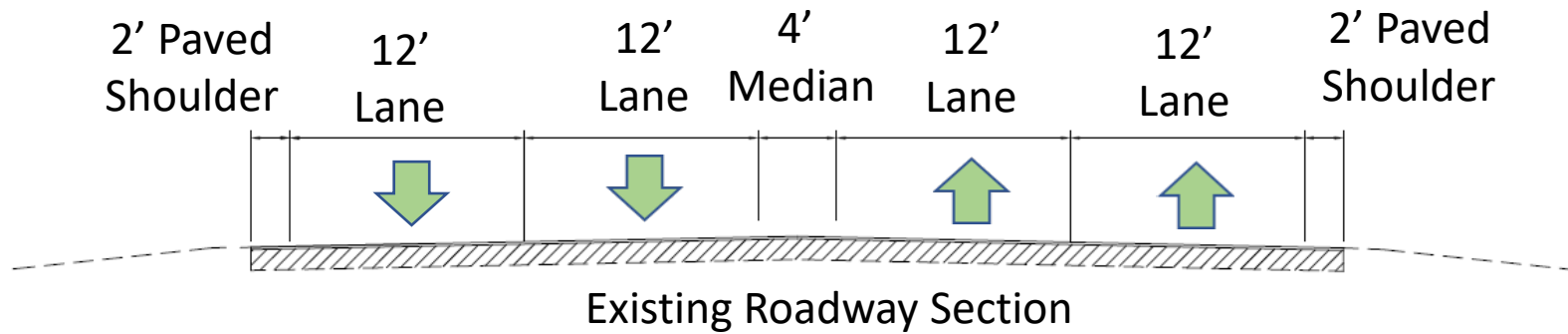
US 20 Widening for TWLTL

- Added Center Lane
 - Safe haven to complete lefts out of drives in two-maneuvers
 - Safe haven to turn left from US 20



SAFETY BENEFITS

US 20 Widening for TWLTL





SAFETY BENEFITS

US 20 Widening for TWLTL

- Widened Paved Shoulder
- Added Guardrail
- Median/Shoulder Rumble Grooving



Image Source: Wikipedia



SAFETY BENEFITS

US 20 Widening for TWLTL

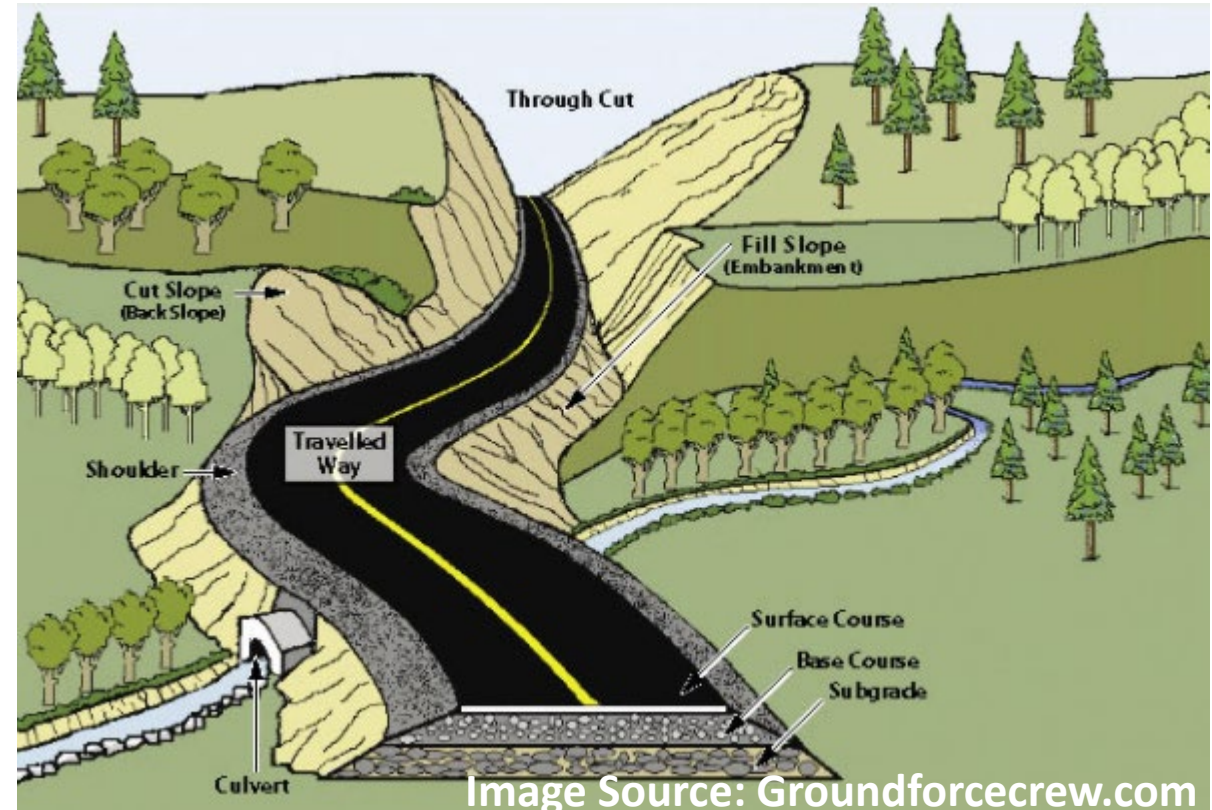
- Corrected Curve Banking (Cross Slopes)
- Improved Stopping Sight Lines
- Improved Intersection Sight Distance
- New Asphalt Surface and Pavement Markings

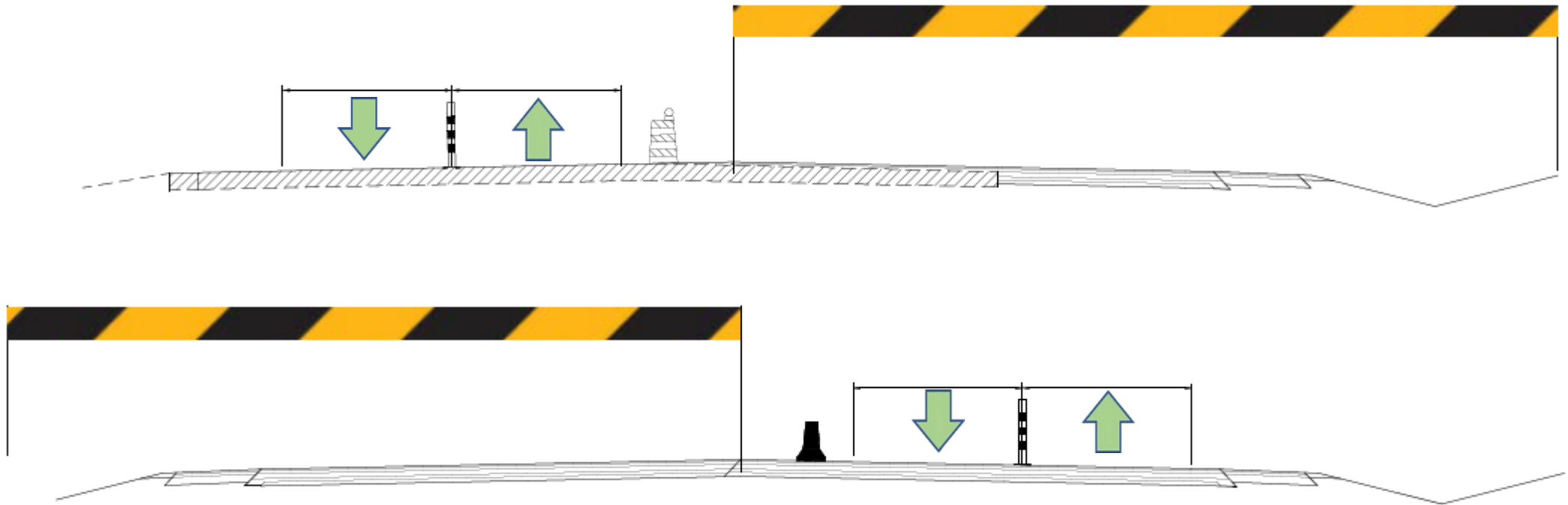


OTHER IMPACTS

US 20 Widening for TWLTL

- Right-of-Way Acquisition
- Environmental Impacts
- Drainage Impacts
- Utility Relocations



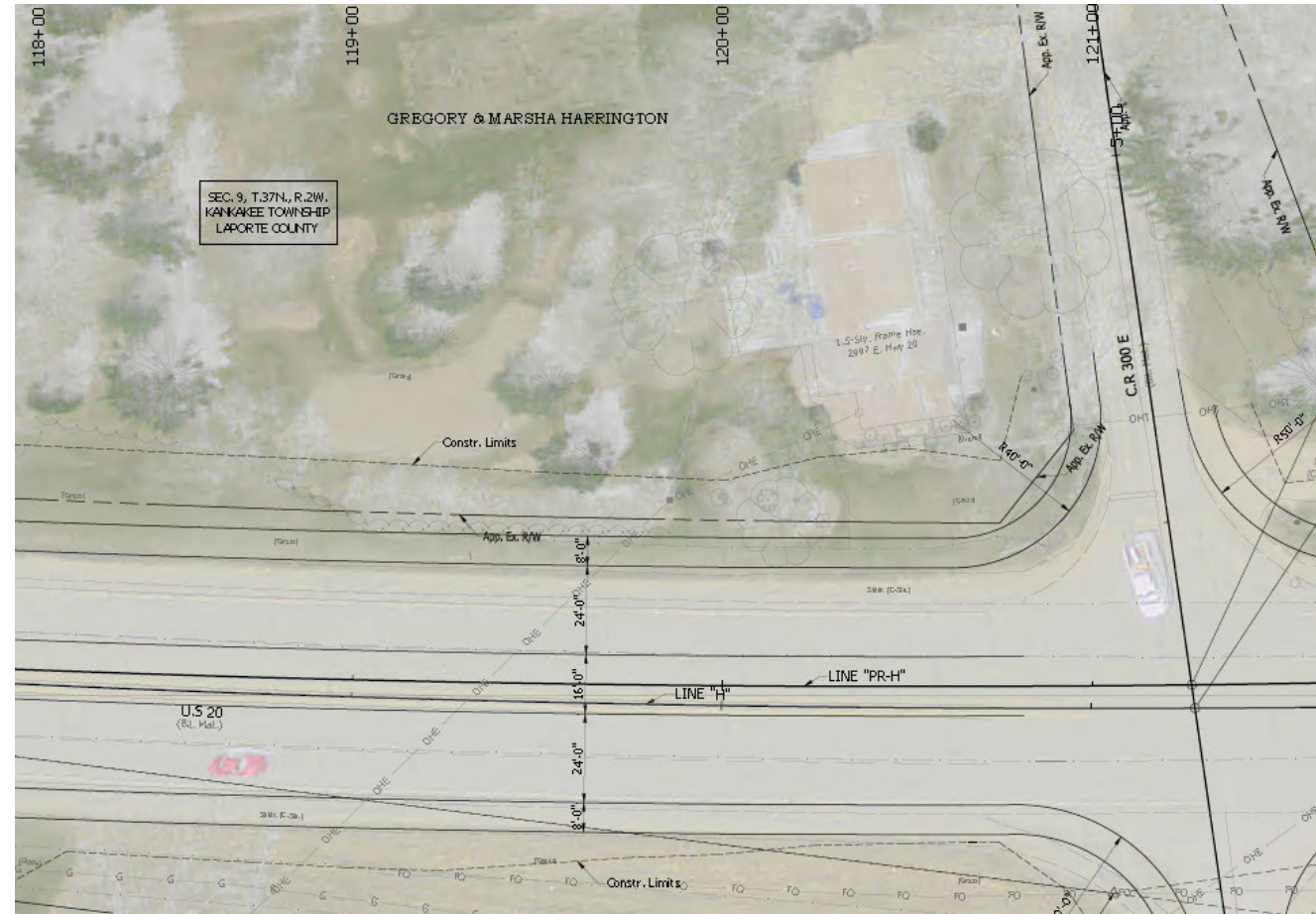


- One lane of traffic in each direction will be maintained

PROPOSED CONDITION

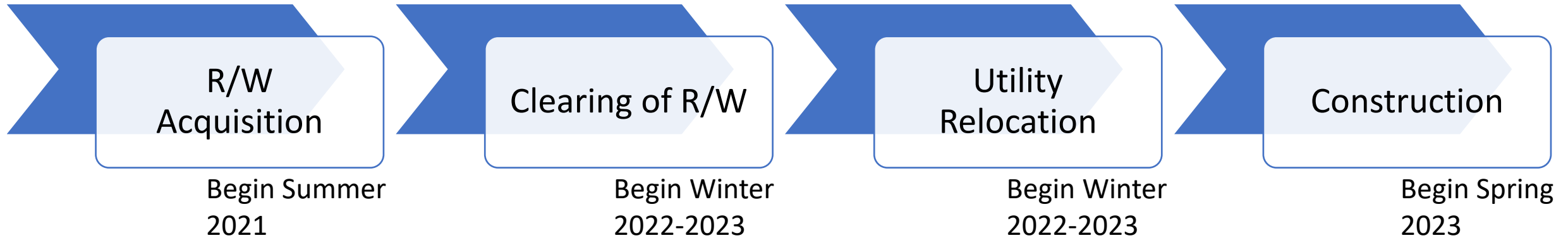
US 20 Widening for TWLTL

- Exhibits Around the Room
 - Proposed Improvements
 - Construction Limits
 - Proposed Right-of-Way Limits
 - No Relocations Required



PROPOSED PROJECT SCHEDULE

US 20 Widening for TWLTL



Note: The above timeline is subject to change, depending on available funding.



Public Comment Period





Ways to provide feedback:



Fill out a comment form



Email team member



Call a team member



Visit INDOT website



Please Submit comments by May 14, 2021





THANK YOU!

US 20 Widening for TWLTL

Contact Information

INDOT

Amber Thomas

INDOT Senior Project Manager, LaPorte District
athomas2@indot.in.gov
219-344-0046

Design/Environmental

Hannah Deguch

BF&S Environmental Studies
hbays@bfsengr.com
317-713-4615

Right-of-Way

Qasim Asghar

DLZ Right of Way Acquisition
qasghar@dlz.com
574-236-4400 x626

