

PROJECT	DESIGNATION
1800052	1800052
CONTRACT	BRIDGE FILE
B-41548	005-35-10422

STRUCTURE INFORMATION				
STRUCTURE	TYPE	SPAN AND SKEW	OVER	STATION
005-35-10422	PRESTRESSED CONCRETE BULB-TEE BEAM BRIDGE	1 SPAN @ 104'-0", SKEW: 25°00'00"	CLEAR CREEK	135+03.80 Line "B"

KIN PROJECT INFORMATION	
DESIGNATION	PROJECT DESCRIPTION
2001575	Small Structure Replacement, 1.52 miles north of S.R. 16

INDIANA DEPARTMENT OF TRANSPORTATION



BRIDGE PLANS

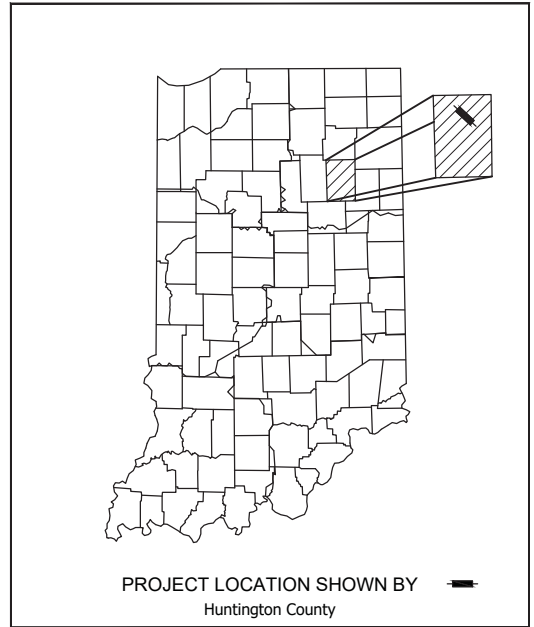
FOR SPANS OVER 20 FEET

ROUTE: SR 5 AT: RP 35+97

PROJECT NO. 1800052 P.E.
1800052 R/W
1800052 CONST.

TRAFFIC DATA	
A.A.D.T. (2023)	3092 V.P.D.
A.A.D.T. (2043)	3399 V.P.D.
D.H.V.	320 V.P.H.
DIRECTIONAL DISTRIBUTION	53 % WBL 47 % EBL
TRUCKS	15 % D.H.V.
	13 % A.A.D.T.

DESIGN DATA	
DESIGN SPEED	SR 5 55 M.P.H.
PROJECT DESIGN CRITERIA	3R (NON-FREEWAY)
FUNCTIONAL CLASSIFICATION	MAJOR COLLECTOR
RURAL/URBAN	RURAL
TERRAIN	ROLLING
ACCESS CONTROL	NONE

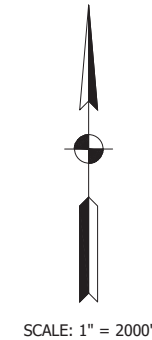
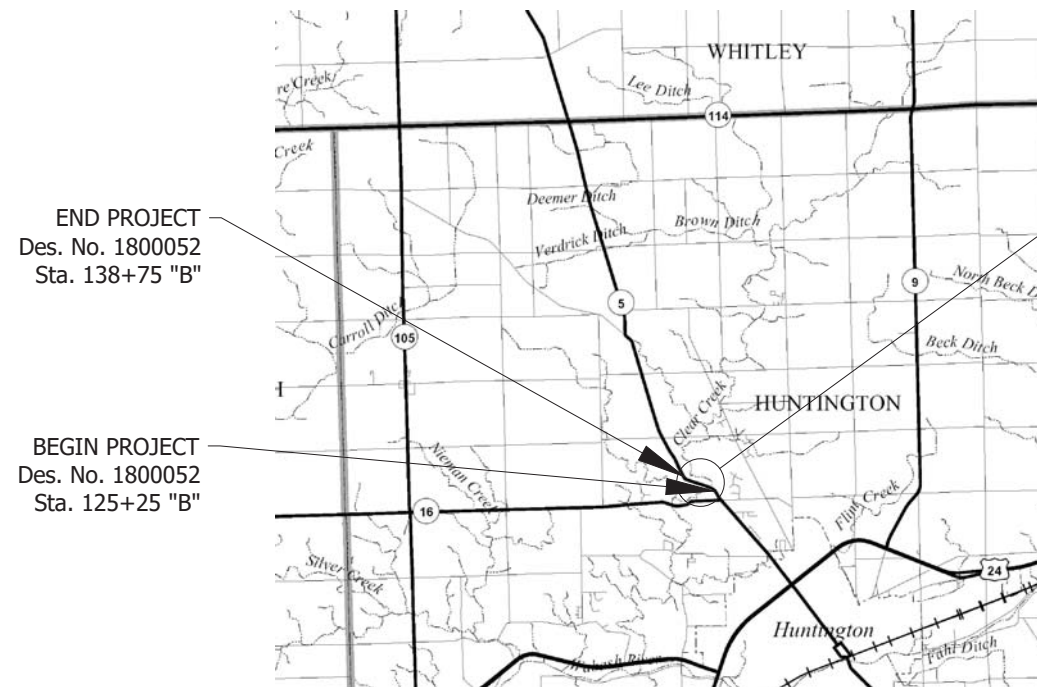


LATITUDE: 40°55'11.10"N LONGITUDE: 85°32'1.98"W

PROJECT LENGTH	
BRIDGE LENGTH:	0.031 MILE
ROADWAY LENGTH:	0.225 MILE
TOTAL LENGTH:	0.256 MILE
MAX. GRADE:	2.76 %

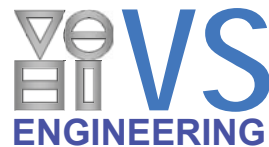
HUC: 05120101130030

Bridge Replacement on State Road 5 over Clear Creek
Located 0.30 Miles North of State Road 16
Section 32, T-29-N, R-9-E, Clear Creek Township, Huntington County



INDIANA DEPARTMENT OF TRANSPORTATION
STANDARD SPECIFICATIONS DATED 2020
TO BE USED WITH THESE PLANS.

PRINT DATE: 8/4/21 PLOT SCALE: 1:1 EDIT DATE: 7/12/21 - 9:19 AM EDITED BY: RHAINES DRAWING FILE: F:\2019\19-4161 R-41548 SR5 CLEAR CREEK BRIDGE REPLACEMENT\30 SHEETDRAWINGS\00 DRAWINGS\19-4161 TITLE AND INDEX.DWG

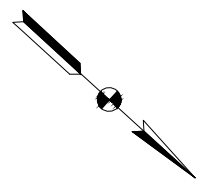


4275 North High School Road
Indianapolis, IN 46254
P: (317) 293-3542
F: (317) 293-4737
vsei@vsengineering.com
www.vsengineering.com



PLANS PREPARED BY:	VS ENGINEERING, INC.	FAX: (317) 293-4737
		TEL: (317) 293-3542
		PHONE NUMBER
CERTIFIED BY:		DATE
APPROVED FOR LETTING:	INDIANA DEPARTMENT OF TRANSPORTATION	DATE

BRIDGE FILE	
005-35-10422	
DESIGNATION	
1800052	
SURVEY BOOK	SHEET
	1 of 32
CONTRACT	PROJECT
B-41548	1800052



Sec. 32, T-29-N, R-9-E
Clear Creek Township
Huntington County

BRYAN J. MICHAUD AND CATHY J. MICHAUD, h/w

THOMAS J. SKELLY AND KATHLEEN M. SKELLY, h/w

DENNIS M. BOWMAN AND SHARON L. BOWMAN, h/w

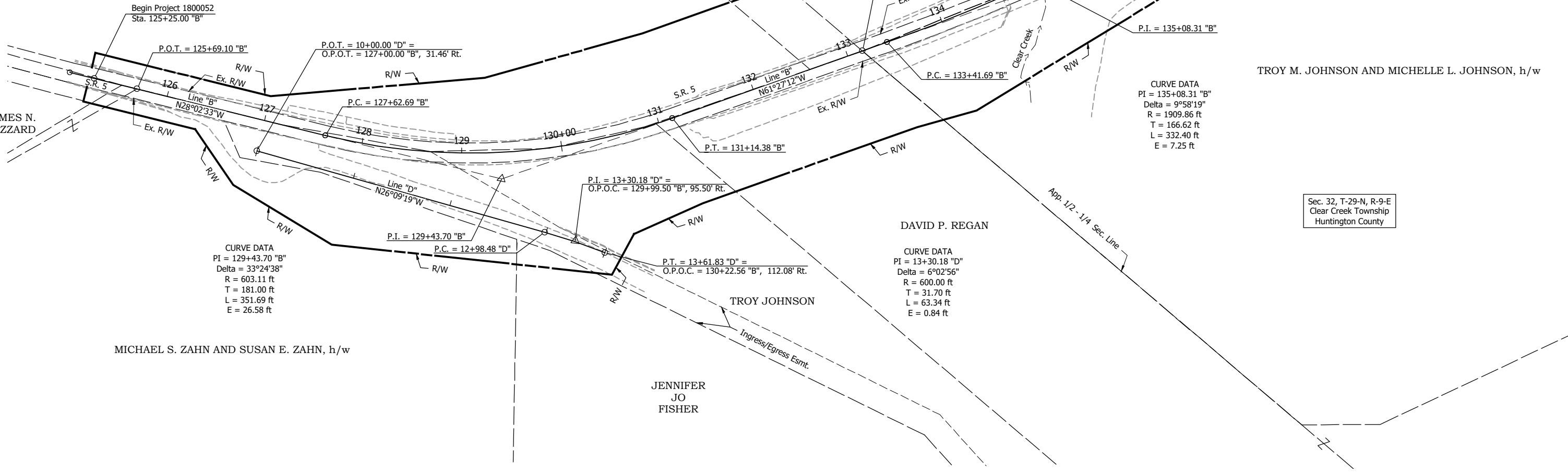
JAMES N. BUZZARD

TROY M. JOHNSON AND MICHELLE L. JOHNSON, h/w

MICHAEL S. ZAHN AND SUSAN E. ZAHN, h/w

DAVID P. REGAN

JENNIFER JO FISHER



CURVE DATA
PI = 129+43.70 "B"
Delta = 33°24'38"
R = 603.11 ft
T = 181.00 ft
L = 351.69 ft
E = 26.58 ft

CURVE DATA
PI = 135+08.31 "B"
Delta = 9°58'19"
R = 1909.86 ft
T = 166.62 ft
L = 332.40 ft
E = 7.25 ft

CURVE DATA
PI = 13+30.18 "D"
Delta = 6°02'56"
R = 600.00 ft
T = 31.70 ft
L = 63.34 ft
E = 0.84 ft

U:\2019\201921 INDOT SR5 Bridge\Cad\Plan Set\Civil\192130TR_P101.dwg (PLAT NO. 1)
 9/22/2021 10:39 AM - U:\2019\201921 INDOT SR5 Bridge\Cad\Plan Set\Civil\192130TR_P101.dwg (PLAT NO. 1)



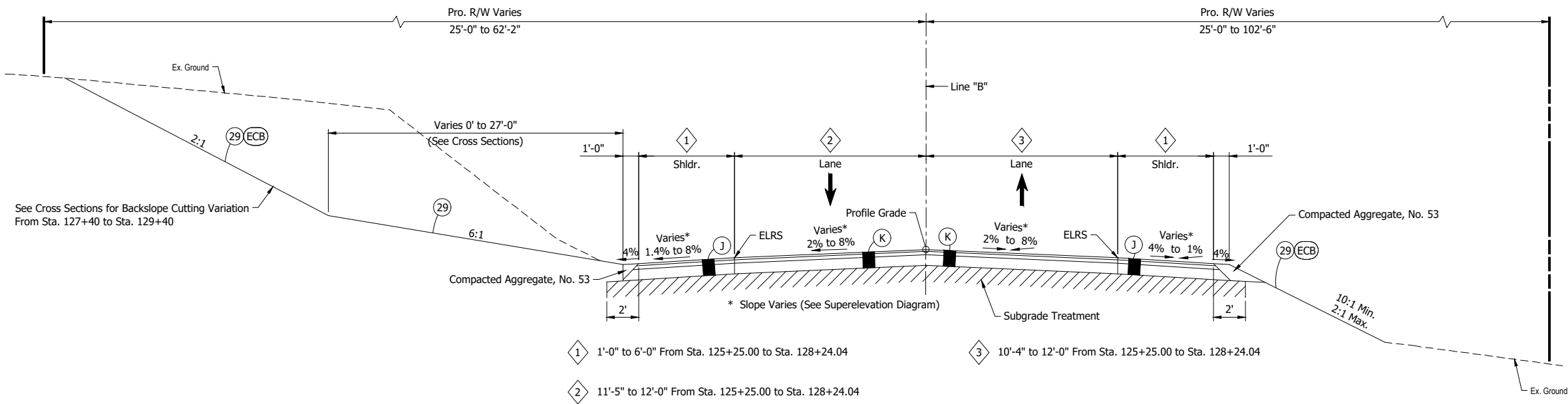
RECOMMENDED FOR APPROVAL _____		DESIGN ENGINEER _____	DATE _____
DESIGNED: DGA	DRAWN: JAJ		
CHECKED: DGD	CHECKED: DGD		

INDIANA
DEPARTMENT OF TRANSPORTATION

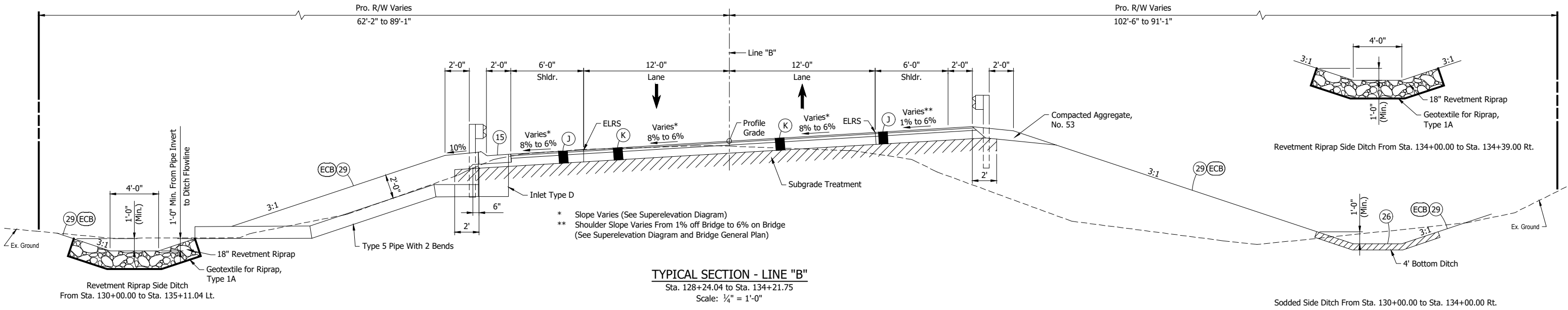
PLAT NO. 1

SCALE 1" = 50'	BRIDGE FILE 005-35-10422
	DESIGNATION 1800052
SURVEY BOOK	SHEETS 3 of 32
CONTRACT B-41548	PROJECT 1800052

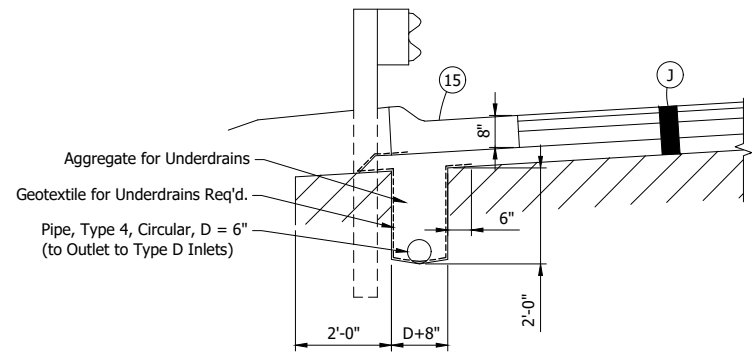
U:\2019\201921 INDOT SR5 Bridge\Cad\Plan Set\Civil\192130TR_ISO1.dwg (TYP. SECT.)
 9/22/2021 10:39 AM



INCIDENTAL CONSTRUCTION
TYPICAL SECTION - LINE "B"
 Sta. 125+25.00 to Sta. 128+24.04
 Scale: 1/4" = 1'-0"



TYPICAL SECTION - LINE "B"
 Sta. 128+24.04 to Sta. 134+21.75
 Scale: 1/4" = 1'-0"



UNDERDRAIN DETAIL
 Sta. 129+35.00 to Sta. 134+20.00 Lt.
 Sta. 135+90.00 to Sta. 137+25.00 Lt.
 Scale: 1/2" = 1'-0"

NOTES:

- Edge Line Rumble Strip (ELRS) milled corrugations shall be installed from Sta. 125+25.00 to Sta. 134+21.75 and Sta. 135+87.91 to Sta. 139+65.00.
- Snow Plowable Raised Pavement Markings shall be installed at centerline from Sta. 125+25.00 to Sta. 134+21.75 and Sta. 135+87.91 to Sta. 139+65.00.
- Pavement marking material shall be Paint.

LEGEND:

- (J) 165 #/sys QC/QA HMA, 3, 64, Surface, 9.5 mm on 275 #/sys QC/QA HMA, 2, 64, Intermediate, 19.0 mm on 440 #/sys QC/QA HMA, 2, 64, Base 19.0 mm on 4" Compacted Aggregate, No. 53
- (K) 165 #/sys QC/QA HMA, 3, 64, Surface, 9.5 mm on 275 #/sys QC/QA HMA, 2, 64, Intermediate, 19.0 mm on 440 #/sys QC/QA HMA, 2, 64, Base 19.0 mm on 4" Compacted Aggregate, No. 53
- (15) Combined Concrete Curb and Gutter, Type B
- (26) Sodding
- (29) Mulched Seeding, Type R
- (ECB) Erosion Control Blanket



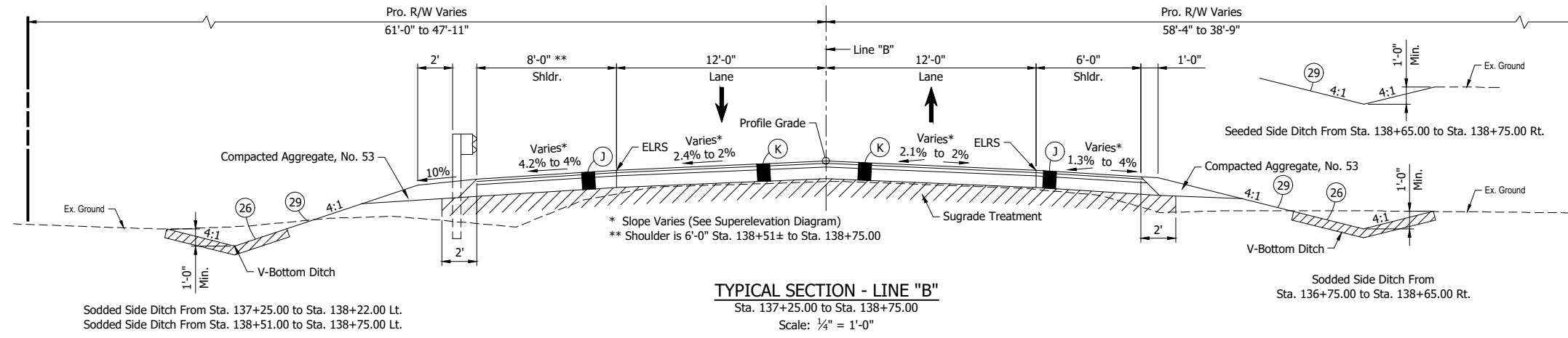
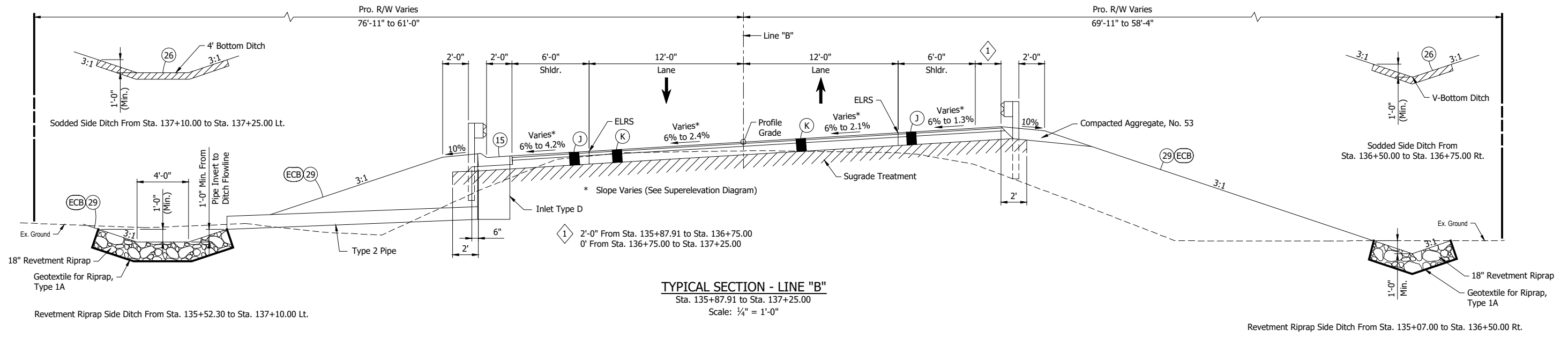
RECOMMENDED FOR APPROVAL	DESIGN ENGINEER	DATE
DESIGNED: DGA	DRAWN: GDH	
CHECKED: DGD	CHECKED: DGD	

INDIANA
 DEPARTMENT OF TRANSPORTATION

 TYPICAL SECTIONS
 LINE "B"

SCALE	BRIDGE FILE
1/4" = 1'-0"	005-35-10422
	DESIGNATION
	1800052
SURVEY BOOK	SHEETS
	4 of 32
CONTRACT	PROJECT
B-41548	1800052

CDH - 9/22/2021 10:39 AM - U:\2019\201921 INDOT SR5 Bridge\Cad\Plan Set\Civil\192130TR_IS02.dwg (TYP. SECT.)

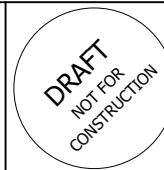


NOTES:

1. Edge Line Rumble Strip (ELRS) milled corrugations shall be installed from Sta. 125+25.00 to Sta. 134+21.75 and Sta. 135+87.91 to Sta. 139+65.00.
2. Snow Plowable Raised Pavement Markings shall be installed at centerline from Sta. 125+25.00 to Sta. 134+21.75 and Sta. 135+87.91 to Sta. 139+65.00.
3. Pavement marking material shall be Paint.

LEGEND:

- (D) HMA for Approaches
165 #/sys HMA, Surface, Type B on
275 #/sys HMA Intermediate, Type B on
6" of Compacted Aggregate No. 53 on
Subgrade Treatment Type II
- (J) 165 #/sys QC/QA HMA, 3, 64, Surface, 9.5 mm on
275 #/sys QC/QA HMA, 2, 64, Intermediate, 19.0 mm on
440 #/sys QC/QA HMA, 2, 64, Base 19.0 mm on
4" Compacted Aggregate, No. 53
- (K) 165 #/sys QC/QA HMA, 3, 64, Surface, 9.5 mm on
275 #/sys QC/QA HMA, 2, 64, Intermediate, 19.0 mm on
440 #/sys QC/QA HMA, 2, 64, Base 19.0 mm on
4" Compacted Aggregate, No. 53
- (15) Combined Concrete Curb and Gutter, Type B
- (26) Sodding
- (29) Mulched Seeding, Type R
- (ECB) Erosion Control Blanket

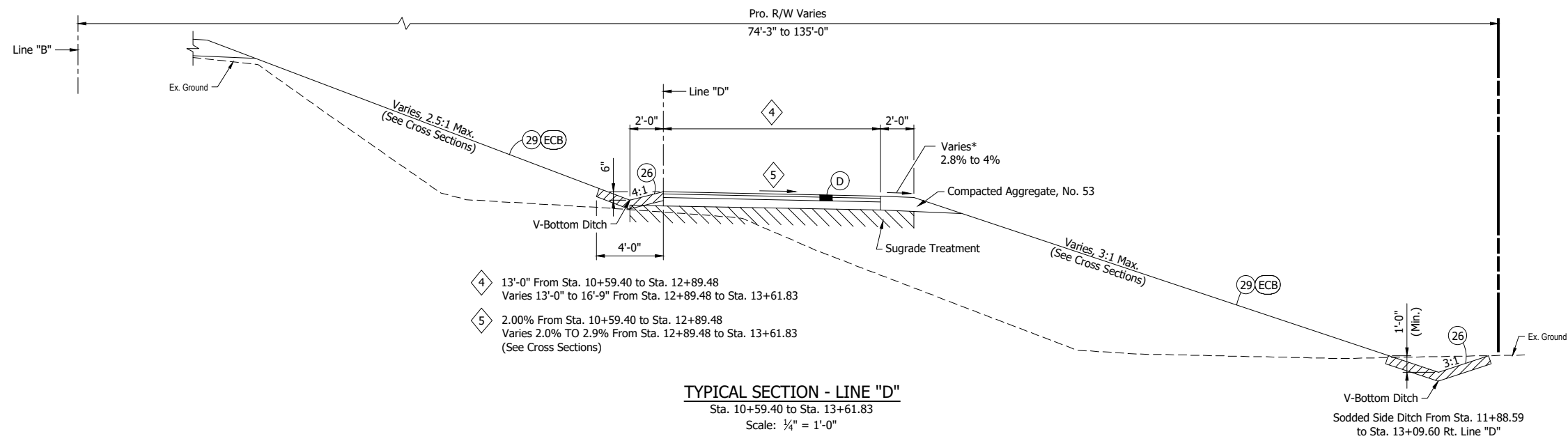
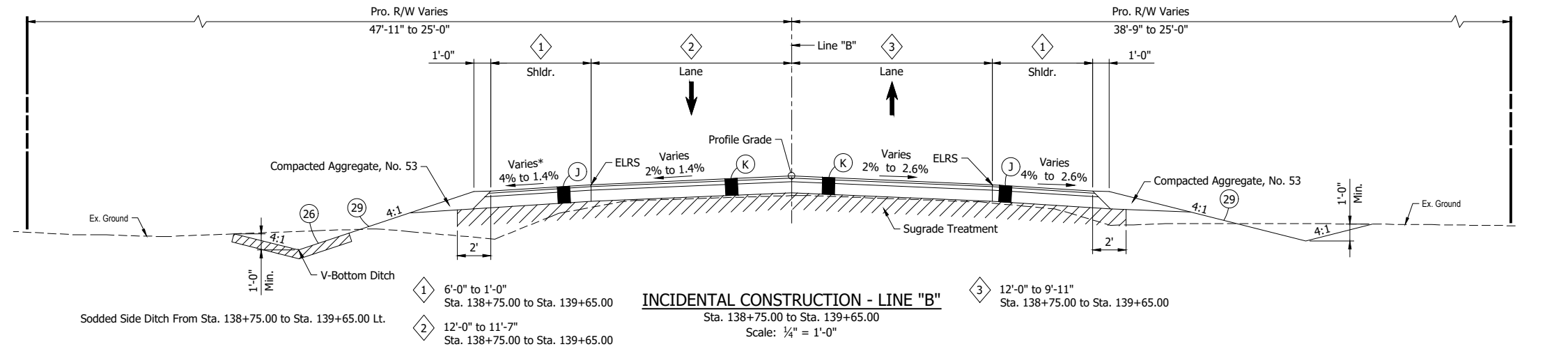


RECOMMENDED FOR APPROVAL	DESIGN ENGINEER	DATE
DESIGNED:	DRAWN: BJS	
CHECKED: DGD	CHECKED: DGD	

**INDIANA
DEPARTMENT OF TRANSPORTATION**

**TYPICAL SECTIONS
LINE "B"**

SCALE 1/4" = 1'-0"	BRIDGE FILE 005-35-10422
	DESIGNATION 1800052
SURVEY BOOK	SHEETS 5 of 32
CONTRACT B-41548	PROJECT 1800052



- NOTES:**
- Edge Line Rumble Strip (ELRS) milled corrugations shall be installed from Sta. 125+25.00 to Sta. 134+21.75 and Sta. 135+87.91 to Sta. 139+65.00.
 - Snow Plowable Raised Pavement Markings shall be installed at centerline from Sta. 125+25.00 to Sta. 134+21.75 and Sta. 135+87.91 to Sta. 139+65.00.
 - Pavement marking material shall be Paint.

- LEGEND:**
- (D) HMA for Approaches
165 #/sys HMA, Surface, Type B on
275 #/sys HMA Intermediate, Type B on
6" of Compacted Aggregate No. 53 on
Subgrade Treatment Type II
 - (J) 165 #/sys QC/QA HMA, 3, 64, Surface, 9.5 mm on
275 #/sys QC/QA HMA, 2, 64, Intermediate, 19.0 mm on
440 #/sys QC/QA HMA, 2, 64, Base 19.0 mm on
4" Compacted Aggregate, No. 53
 - (K) 165 #/sys QC/QA HMA, 3, 64, Surface, 9.5 mm on
275 #/sys QC/QA HMA, 2, 64, Intermediate, 19.0 mm on
440 #/sys QC/QA HMA, 2, 64, Base 19.0 mm on
4" Compacted Aggregate, No. 53
 - (15) Combined Concrete Curb and Gutter, Type B
 - (26) Sodding
 - (29) Mulched Seeding, Type R
 - (ECB) Erosion Control Blanket

CDH - 9/22/2021 10:39 AM - U:\2019\201921 INDOT SR5 Bridge\Cad\Plan Set\Civil\192130TR_IS02.dwg (TYP. SECT. 2)



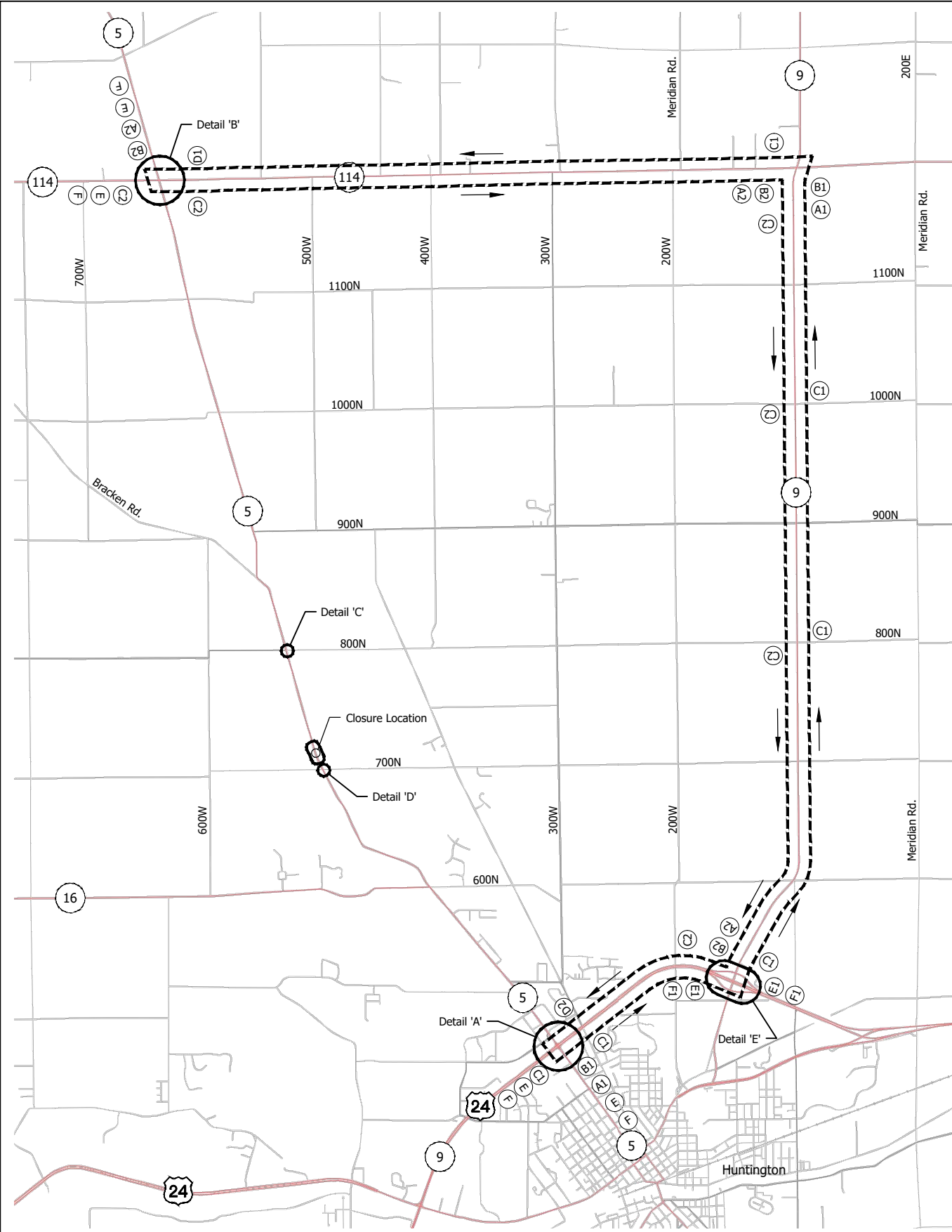
RECOMMENDED FOR APPROVAL	DESIGN ENGINEER	DATE
DESIGNED:	DRAWN: BJS	
CHECKED: DGD	CHECKED: DGD	

**INDIANA
DEPARTMENT OF TRANSPORTATION**

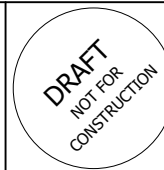
**TYPICAL SECTIONS
LINES "B" AND "D"**

SCALE	BRIDGE FILE
1/4" = 1'-0"	005-35-10422
	DESIGNATION
	1800052
SURVEY BOOK	SHEETS
	6 of 32
CONTRACT	PROJECT
B-41548	1800052

B:\S - 9/22/2021 10:39 AM - U:\2019\201921 INDOT SR5 Bridge\Cad\Plan Set\Civil\192130MT_DR01.dwg (MOT - DETOUR)



DETOUR ROUTE
Scale: 1" = 3000'



RECOMMENDED FOR APPROVAL	DESIGN ENGINEER	DATE
DESIGNED: PH	DRAWN: GDH	
CHECKED: DGD	CHECKED: PH	

INDIANA
DEPARTMENT OF TRANSPORTATION

MAINTENANCE OF TRAFFIC
DETOUR ROUTE

SCALE AS NOTED	BRIDGE FILE 005-35-10422
	DESIGNATION 1800052
SURVEY BOOK	SHEETS 7 of 32
CONTRACT B-41548	PROJECT 1800052

DETOUR ROUTE MARKER ASSEMBLIES

<p>(A1)</p> <p>DETOUR XM4-8 24" x 12"</p> <p>NORTH M3-1(S) 24" x 12"</p> <p>INDIANA 5 M1-5 24" x 24"</p> <p>← M5-1(R or L)(S) 21" x 15"</p> <p>ADVANCE TURN DETOUR MARKER ASSEMBLY</p>	<p>(B1)</p> <p>DETOUR XM4-8 24" x 12"</p> <p>NORTH M3-1(S) 24" x 12"</p> <p>INDIANA 5 M1-5 24" x 24"</p> <p>← M6-1(R or L)(S) 21" x 15"</p> <p>DIRECTIONAL DETOUR MARKER ASSEMBLY</p>	<p>(C1)</p> <p>DETOUR XM4-8 24" x 12"</p> <p>NORTH M3-1(S) 24" x 12"</p> <p>INDIANA 5 M1-5 24" x 24"</p> <p>↑ M6-3(S) 21" x 15"</p> <p>CONFIRMING DETOUR ROUTE MARKER ASSEMBLY</p>	<p>(D1)</p> <p>END DETOUR XM4-8a 24" x 18"</p> <p>NORTH M3-1(S) 24" x 12"</p> <p>INDIANA 5 M1-5 24" x 24"</p> <p>END DETOUR ROUTE MARKER ASSEMBLY</p>
<p>(A2)</p> <p>DETOUR XM4-8 24" x 12"</p> <p>SOUTH M3-3(S) 24" x 12"</p> <p>INDIANA 5 M1-5 24" x 24"</p> <p>← M5-1(R or L)(S) 21" x 15"</p> <p>ADVANCE TURN DETOUR MARKER ASSEMBLY</p>	<p>(B2)</p> <p>DETOUR XM4-8 24" x 12"</p> <p>SOUTH M3-3(S) 24" x 12"</p> <p>INDIANA 5 M1-5 24" x 24"</p> <p>← M6-1(R or L)(S) 21" x 15"</p> <p>DIRECTIONAL DETOUR MARKER ASSEMBLY</p>	<p>(C2)</p> <p>DETOUR XM4-8 24" x 12"</p> <p>SOUTH M3-3(S) 24" x 12"</p> <p>INDIANA 5 M1-5 24" x 24"</p> <p>↑ M6-3(S) 21" x 15"</p> <p>CONFIRMING DETOUR ROUTE MARKER ASSEMBLY</p>	<p>(D2)</p> <p>END DETOUR XM4-8a 24" x 18"</p> <p>SOUTH M3-1(S) 24" x 12"</p> <p>INDIANA 5 M1-5 24" x 24"</p> <p>END DETOUR ROUTE MARKER ASSEMBLY</p>
<p>(E1)</p> <p>DETOUR XM4-8 24" x 12"</p> <p>NORTH M3-1(S) 24" x 12"</p> <p>INDIANA 5 M1-5 24" x 24"</p> <p>↗ M6-2(R)(S) 21" x 15"</p> <p>ADVANCE TURN DETOUR MARKER ASSEMBLY</p>	<p>(F1)</p> <p>DETOUR XM4-8 24" x 12"</p> <p>NORTH M3-1(S) 24" x 12"</p> <p>INDIANA 5 M1-5 24" x 24"</p> <p>↗ M5-2(R)(S) 21" x 15"</p> <p>DIRECTIONAL DETOUR MARKER ASSEMBLY</p>		

LEGEND:

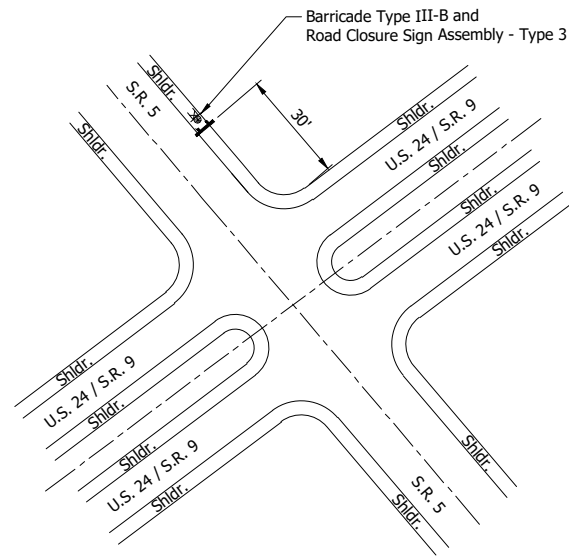
→ Direction of Traffic

(A1) 4 Each	(A2) 3 Each	(G) 8 Each
(B1) 4 Each	(B2) 3 Each	
(C1) 6 Each	(C2) 6 Each	
(D1) 1 Each	(D2) 1 Each	
(E1) 2 Each	(E) 4 Each	
(F1) 2 Each	(F) 4 Each	

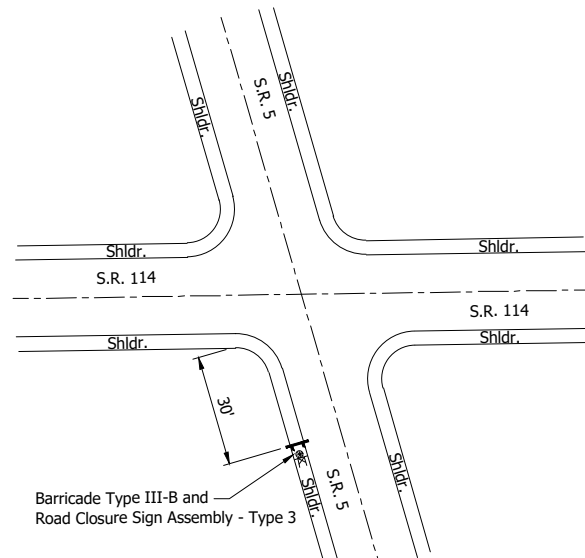
NOTE:

See sheet # for details and quantities.

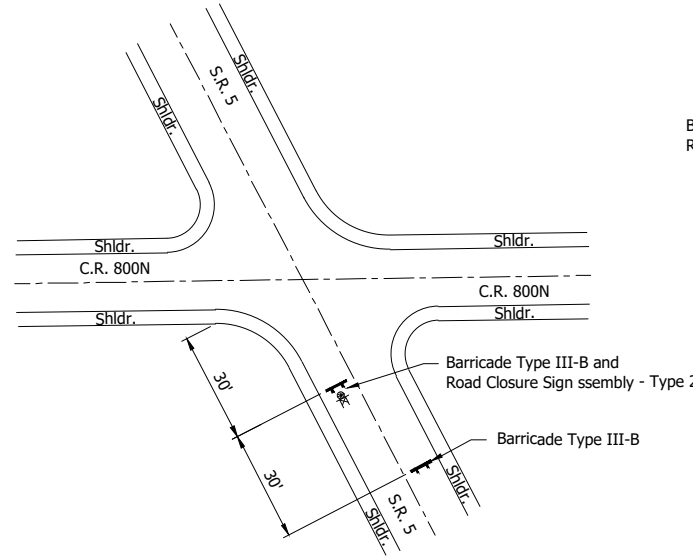
B:\S - 9/22/2021 10:39 AM - U:\2019\201921 INDOT SR5 Bridge\Cad\Plan Set\Civil\192130MT_DTO1.dwg (MOT - DETAIL)



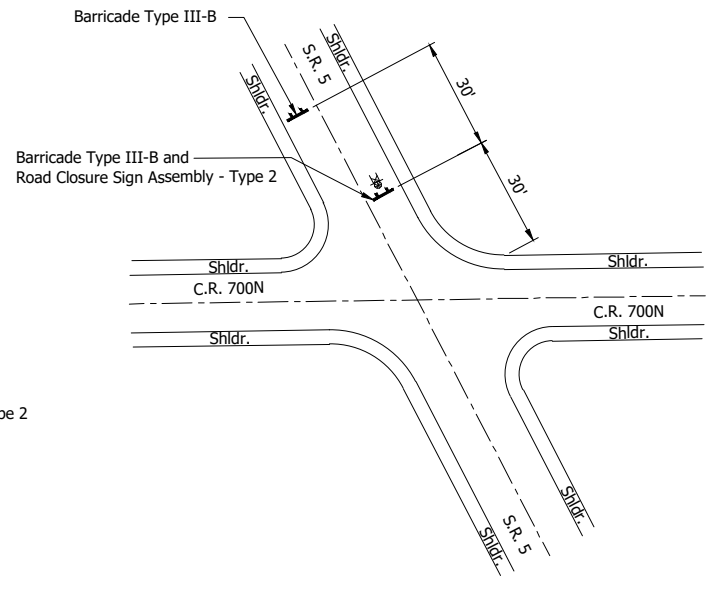
DETAIL 'A'
Not to Scale



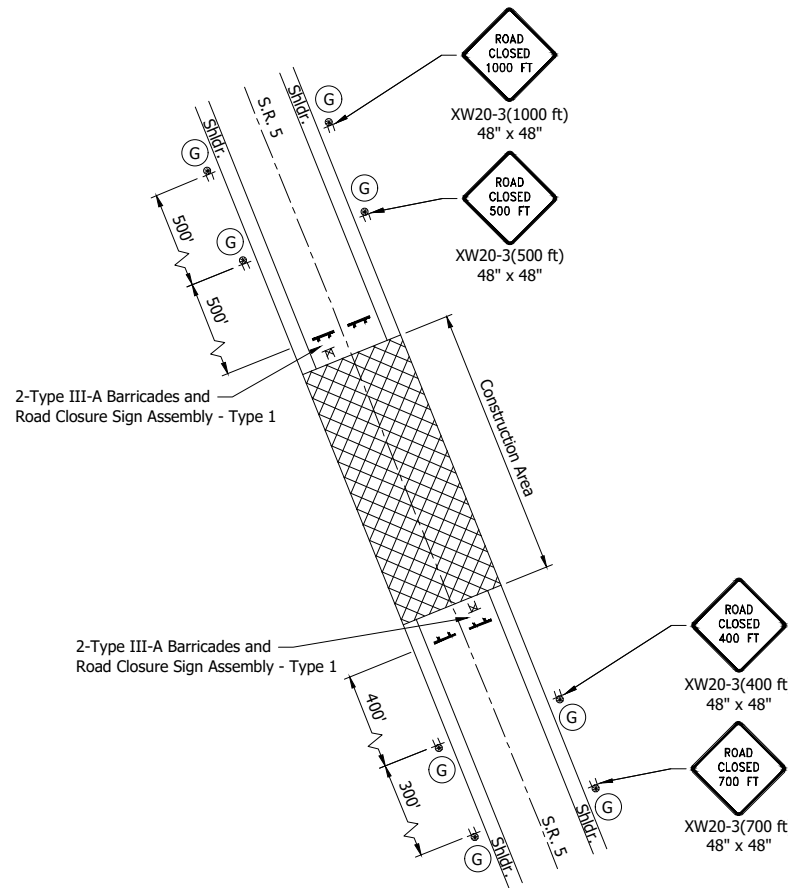
DETAIL 'B'
Not to Scale



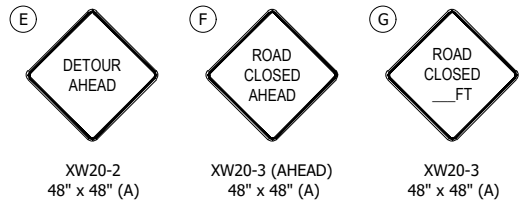
DETAIL 'C'
Not to Scale



DETAIL 'D'
Not to Scale



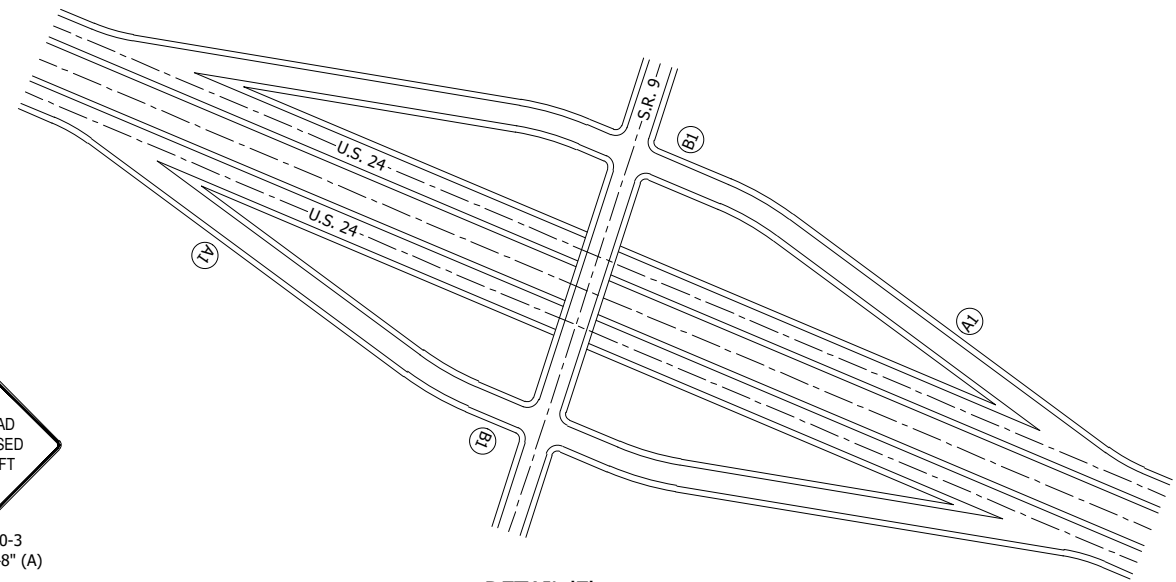
PROJECT SITE DETAIL
Not to Scale



ROAD CLOSURE SIGN ASSEMBLY - TYPE 1

ROAD CLOSURE SIGN ASSEMBLY - TYPE 2

ROAD CLOSURE SIGN ASSEMBLY - TYPE 3



DETAIL 'E'
Not to Scale

ESTIMATE OF QUANTITIES		
ITEM	QUANTITY	UNIT
Maintaining Traffic	1	Lump Sum
Construction Sign Type A (2 Undistributed)	18	Each
Detour Route Marker Assemblies	32	Each
Standard Barricade Type III-A (24 ft Undistributed)	72	ft
Standard Barricade Type III-B (24 ft Undistributed)	96	ft
Road Closure Sign Assemblies	6	Each
Temporary Pavement Marking, 4"	1500	ft

NOTE:
See sheet # for detour and detail locations.

- LEGEND:**
- Low Intensity Construction Warning Light, Type A
 - TT Construction Sign and Supports
 - TT Barricade
 - TT Road Closure Sign Assembly
 - Construction Area
 - D# End Detour Route Marker Assembly

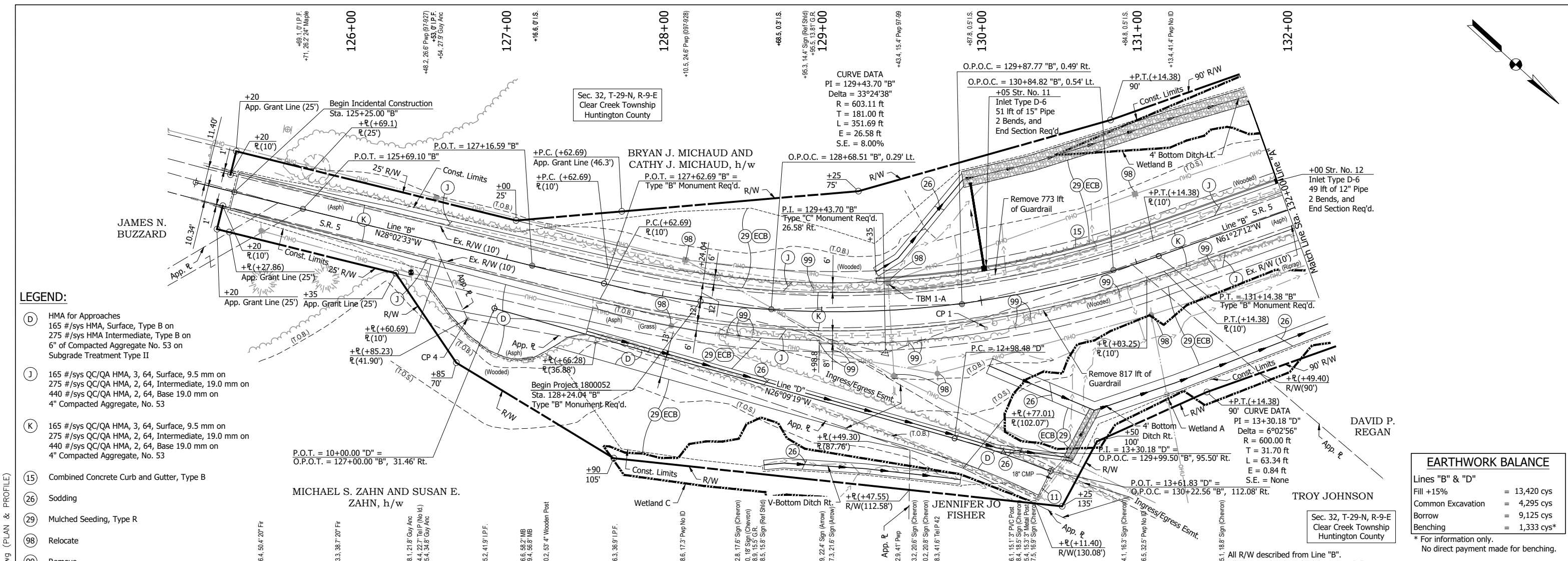


RECOMMENDED FOR APPROVAL	DESIGN ENGINEER	DATE
DESIGNED: PH	DRAWN: GDH	
CHECKED: DGD	CHECKED: DGD	

**INDIANA
DEPARTMENT OF TRANSPORTATION**

**MAINTENANCE OF TRAFFIC
DETAILS & QUANTITIES**

SCALE NOT TO SCALE	BRIDGE FILE 005-35-10422
	DESIGNATION 1800052
SURVEY BOOK	SHEETS 8 of 32
CONTRACT B-41548	PROJECT 1800052

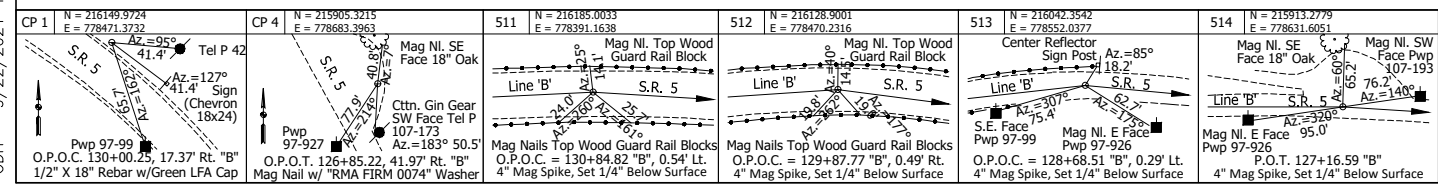
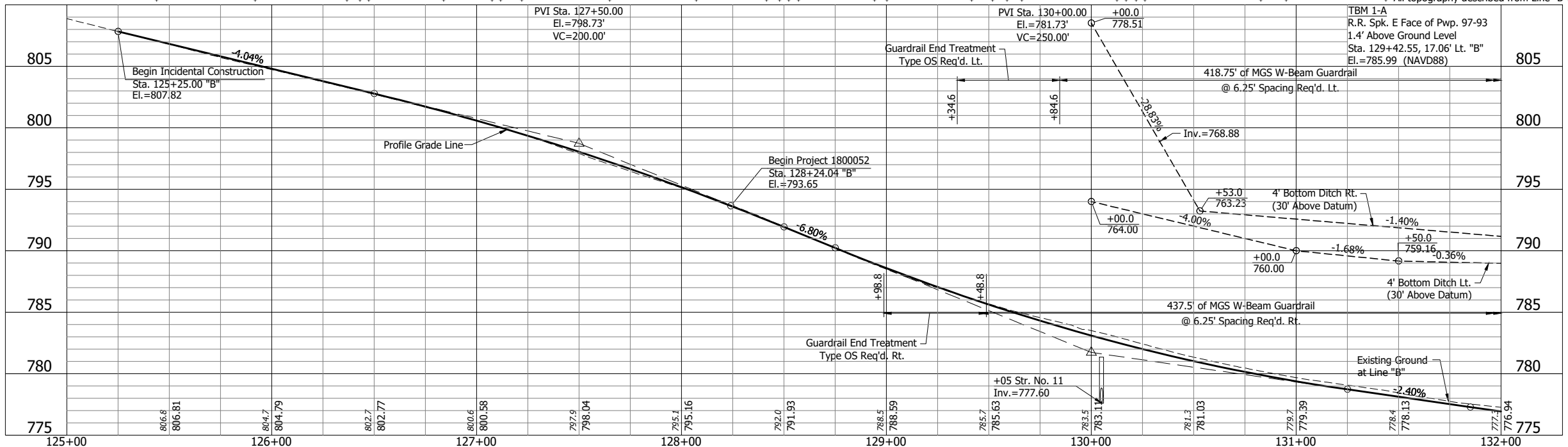


- LEGEND:**
- (D) HMA for Approaches
165 #/sys HMA, Surface, Type B on
275 #/sys HMA Intermediate, Type B on
6" of Compacted Aggregate No. 53 on
Subgrade Treatment Type II
 - (J) 165 #/sys QC/QA HMA, 3, 64, Surface, 9.5 mm on
275 #/sys QC/QA HMA, 2, 64, Intermediate, 19.0 mm on
440 #/sys QC/QA HMA, 2, 64, Base 19.0 mm on
4" Compacted Aggregate, No. 53
 - (K) 165 #/sys QC/QA HMA, 3, 64, Surface, 9.5 mm on
275 #/sys QC/QA HMA, 2, 64, Intermediate, 19.0 mm on
440 #/sys QC/QA HMA, 2, 64, Base 19.0 mm on
4" Compacted Aggregate, No. 53
 - (15) Combined Concrete Curb and Gutter, Type B
 - (26) Sodding
 - (29) Mulched Seeding, Type R
 - (98) Relocate
 - (99) Remove
 - (ECB) Erosion Control Blanket
 - (Riprap) Revetment Riprap

EARTHWORK BALANCE

Lines "B" & "D"	
Fill +15%	= 13,420 cys
Common Excavation	= 4,295 cys
Borrow	= 9,125 cys*
Benching	= 1,333 cys*

* For information only.
No direct payment made for benching.



**DRAFT
NOT FOR
CONSTRUCTION**

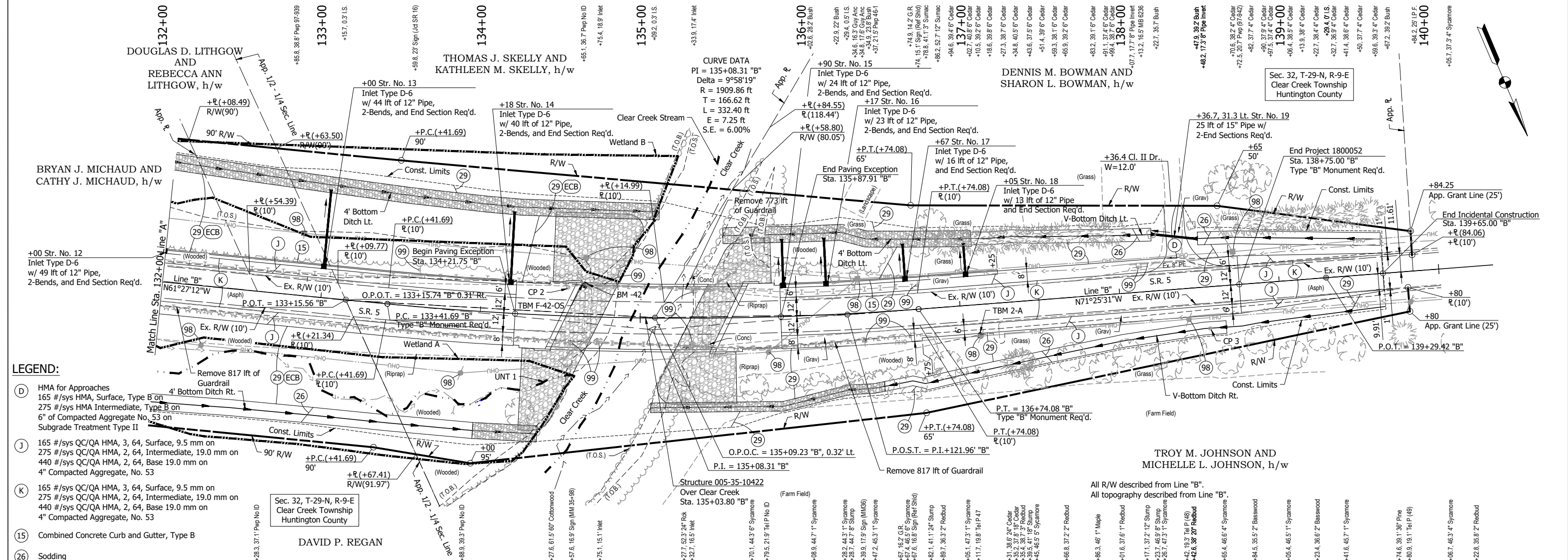
RECOMMENDED FOR APPROVAL	DESIGN ENGINEER	DATE
DESIGNED: DGA	DRAWN: GDH	
CHECKED: DGD	CHECKED: DGD	

**INDIANA
DEPARTMENT OF TRANSPORTATION**

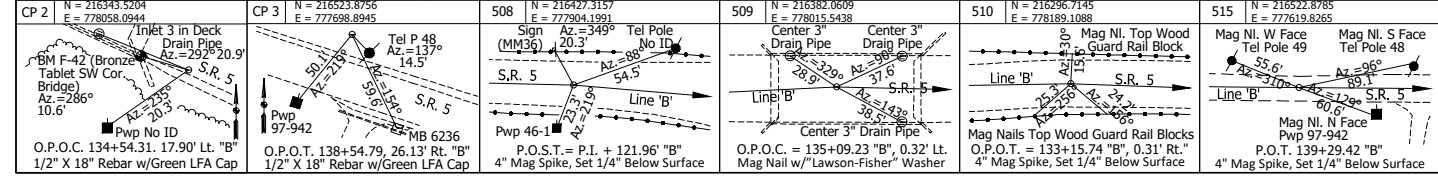
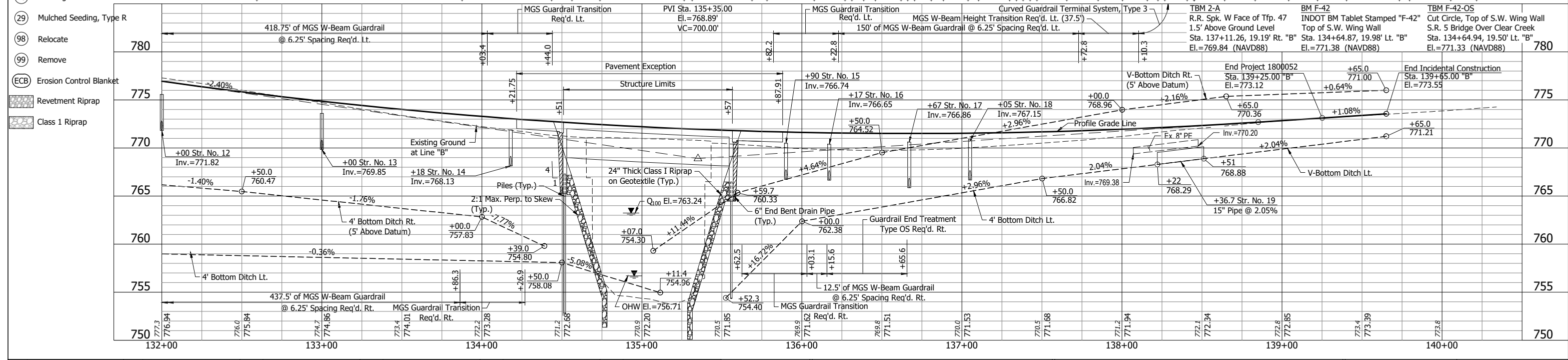
**PLAN AND PROFILE
STA. 126+00 TO STA. 132+00 "B"**

HORIZONTAL SCALE	BRIDGE FILE
1" = 30'	005-35-10422
VERTICAL SCALE	DESIGNATION
1" = 5'	1800052
SURVEY BOOK	SHEETS
	9 of 32
CONTRACT	PROJECT
B-41548	1800052

GDH - 9/22/2021 10:51 AM - U:\2019\201921 INDOT SR5 Bridge\Cad\Plan Set\Civil\192130TR_PP01.dwg (PLAN & PROFILE)



- LEGEND:**
- (D) HMA for Approaches
165 #/sys HMA, Surface, Type B on
275 #/sys HMA Intermediate, Type B on
6" of Compacted Aggregate No. 53 on
Subgrade Treatment Type II
 - (J) 165 #/sys QC/QA HMA, 3, 64, Surface, 9.5 mm on
275 #/sys QC/QA HMA, 2, 64, Intermediate, 19.0 mm on
440 #/sys QC/QA HMA, 2, 64, Base 19.0 mm on
4" Compacted Aggregate, No. 53
 - (K) 165 #/sys QC/QA HMA, 3, 64, Surface, 9.5 mm on
275 #/sys QC/QA HMA, 2, 64, Intermediate, 19.0 mm on
440 #/sys QC/QA HMA, 2, 64, Base 19.0 mm on
4" Compacted Aggregate, No. 53
 - (15) Combined Concrete Curb and Gutter, Type B
 - (26) Sodding
 - (29) Mulched Seeding, Type R
 - (98) Relocate
 - (99) Remove
 - (ECB) Erosion Control Blanket
 - Revetment Riprap
 - Class 1 Riprap



**DRAFT
NOT FOR
CONSTRUCTION**

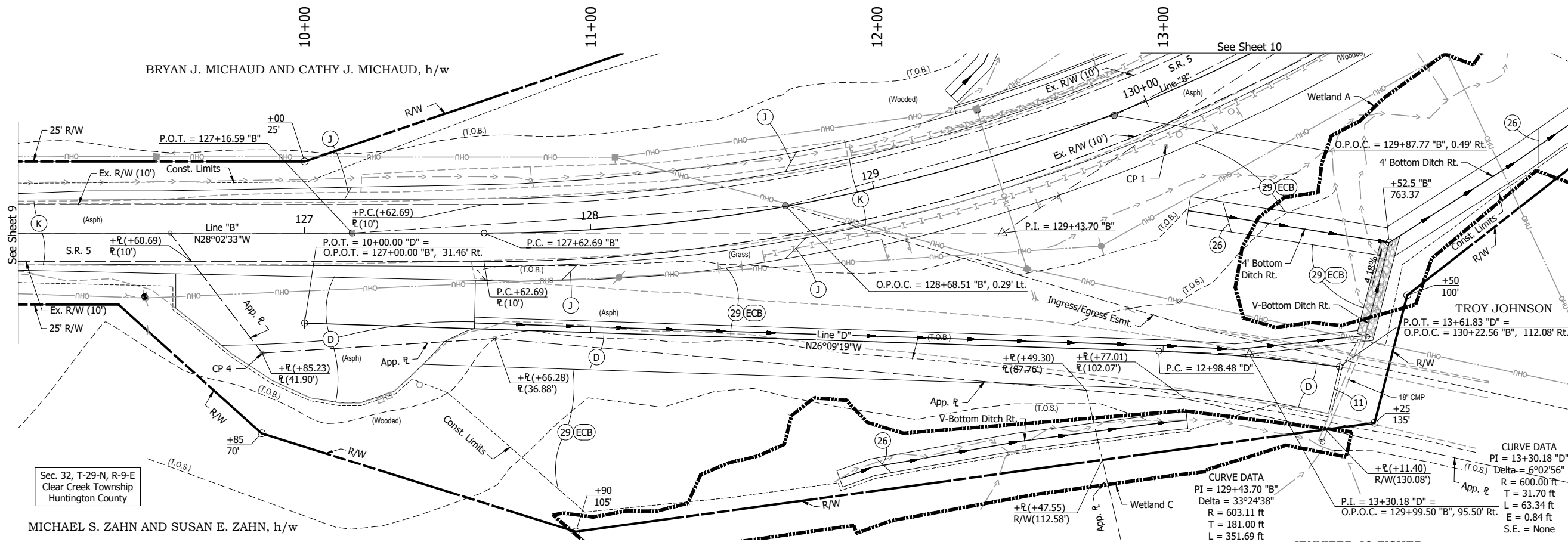
RECOMMENDED FOR APPROVAL	DESIGN ENGINEER	DATE
DESIGNED: DGA	DRAWN: GDH	
CHECKED: DGD	CHECKED: DGD	

**INDIANA
DEPARTMENT OF TRANSPORTATION**

**PLAN AND PROFILE
STA. 132+00 TO STA. 139+00 "B"**

HORIZONTAL SCALE	BRIDGE FILE
1" = 30'	005-35-10422
VERTICAL SCALE	DESIGNATION
1" = 5'	1800052
SURVEY BOOK	SHEETS
	10 of 32
CONTRACT	PROJECT
B-41548	1800052

BRYAN J. MICHAUD AND CATHY J. MICHAUD, h/w



- LEGEND:**
- (D) HMA for Approaches
165 #/sys HMA, Surface, Type B on
275 #/sys HMA Intermediate, Type B on
6" of Compacted Aggregate No. 53 on
Subgrade Treatment Type II
 - (J) 165 #/sys QC/QA HMA, 3, 64, Surface, 9.5 mm on
275 #/sys QC/QA HMA, 2, 64, Intermediate, 19.0 mm on
440 #/sys QC/QA HMA, 2, 64, Base 19.0 mm on
4" Compacted Aggregate, No. 53
 - (K) 165 #/sys QC/QA HMA, 3, 64, Surface, 9.5 mm on
275 #/sys QC/QA HMA, 2, 64, Intermediate, 19.0 mm on
440 #/sys QC/QA HMA, 2, 64, Base 19.0 mm on
4" Compacted Aggregate, No. 53
 - (15) Combined Concrete Curb and Gutter, Type B
 - (26) Sodding
 - (29) Mulched Seeding, Type R
 - (ECB) Erosion Control Blanket
 - (Riprap) Revetment Riprap

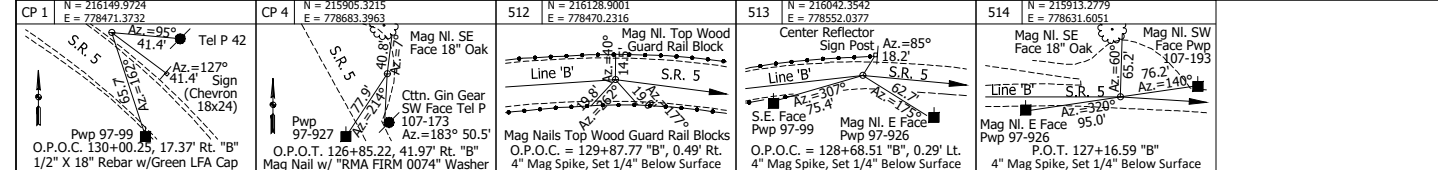
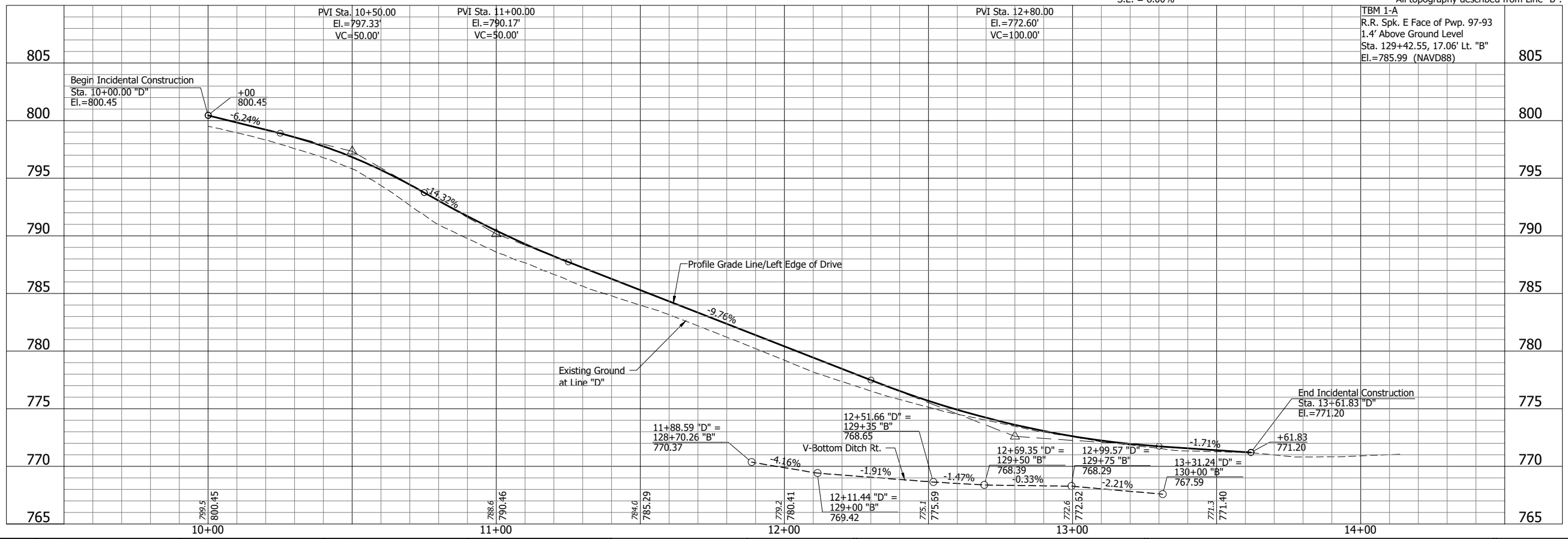
Sec. 32, T-29-N, R-9-E
Clear Creek Township
Huntington County

MICHAEL S. ZAHN AND SUSAN E. ZAHN, h/w

JENNIFER JO FISHER

All R/W described from Line "B".
All topography described from Line "B".

CURVE DATA
 PI = 129+43.70 "B"
 Delta = 33°24'38"
 R = 603.11 ft
 T = 181.00 ft
 L = 351.69 ft
 E = 26.58 ft
 S.E. = 8.00%



**DRAFT
NOT FOR
CONSTRUCTION**

RECOMMENDED FOR APPROVAL	DESIGN ENGINEER	DATE
DESIGNED: DGA	DRAWN: RHK	
CHECKED: DGD	CHECKED: DGD	

INDIANA
DEPARTMENT OF TRANSPORTATION

**PLAN AND PROFILE
STA. 10+00 TO STA 14+20 LINE "D"**

HORIZONTAL SCALE	BRIDGE FILE
1" = 20'	005-35-10422
VERTICAL SCALE	DESIGNATION
1" = 5'	1800052
SURVEY BOOK	SHEETS
	11 of 32
CONTRACT	PROJECT
B-41548	1800052