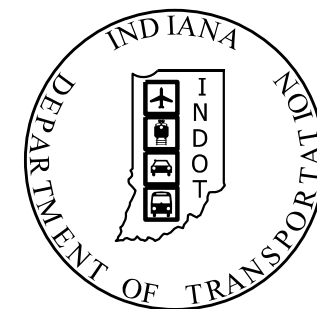


PROJECT	DESIGNATION
1700170	1700170
CONTRACT	1702071
R-40551	1701058
	1702072

CULVERT ASSETS		
DES. NO.	CULVERT ASSET ID	WORK TYPE
1700170	CV 161-087-10.46	Small Structure Replacement
1701058	CV 062-087-52.74	Small Structure Replacement
1702071	CV 062-087-48.79	Small Structure Replacement
1702072	CV 062-087-53.01	Small Structure Replacement

# INDIANA DEPARTMENT OF TRANSPORTATION



## ROAD PLANS

### SMALL STRUCTURE REPLACEMENTS

PROJECT NO. 1700170 P.E.  
 1700170 R/W  
 1700170 CONST.

TRAFFIC DATA		DES. 1700170	
A.A.D.T.	(2022)	774	V.P.D.
A.A.D.T.	(2042)	559	V.P.D.
D.H.V	(10.3%)	69	V.P.H.
DIRECTIONAL DISTRIBUTION		51.5%(EB)	%
TRUCKS		9.0%	A.A.D.T.
		9.0%	D.H.V.

DESIGN DATA	
DESIGN SPEED	55 M.P.H.
PROJECT DESIGN CRITERIA	3R Non-Freeway
FUNCTIONAL CLASSIFICATION	Major Collector
RURAL/URBAN	Rural
TERRAIN	Level
ACCESS CONTROL	None

TRAFFIC DATA		DES. 1702071	
A.A.D.T.	(2022)	3980	V.P.D.
A.A.D.T.	(2042)	5362	V.P.D.
D.H.V	(10.3%)	143	V.P.H.
DIRECTIONAL DISTRIBUTION		49.8%(EB)	%
TRUCKS		7.0%	A.A.D.T.
		7.0%	D.H.V.

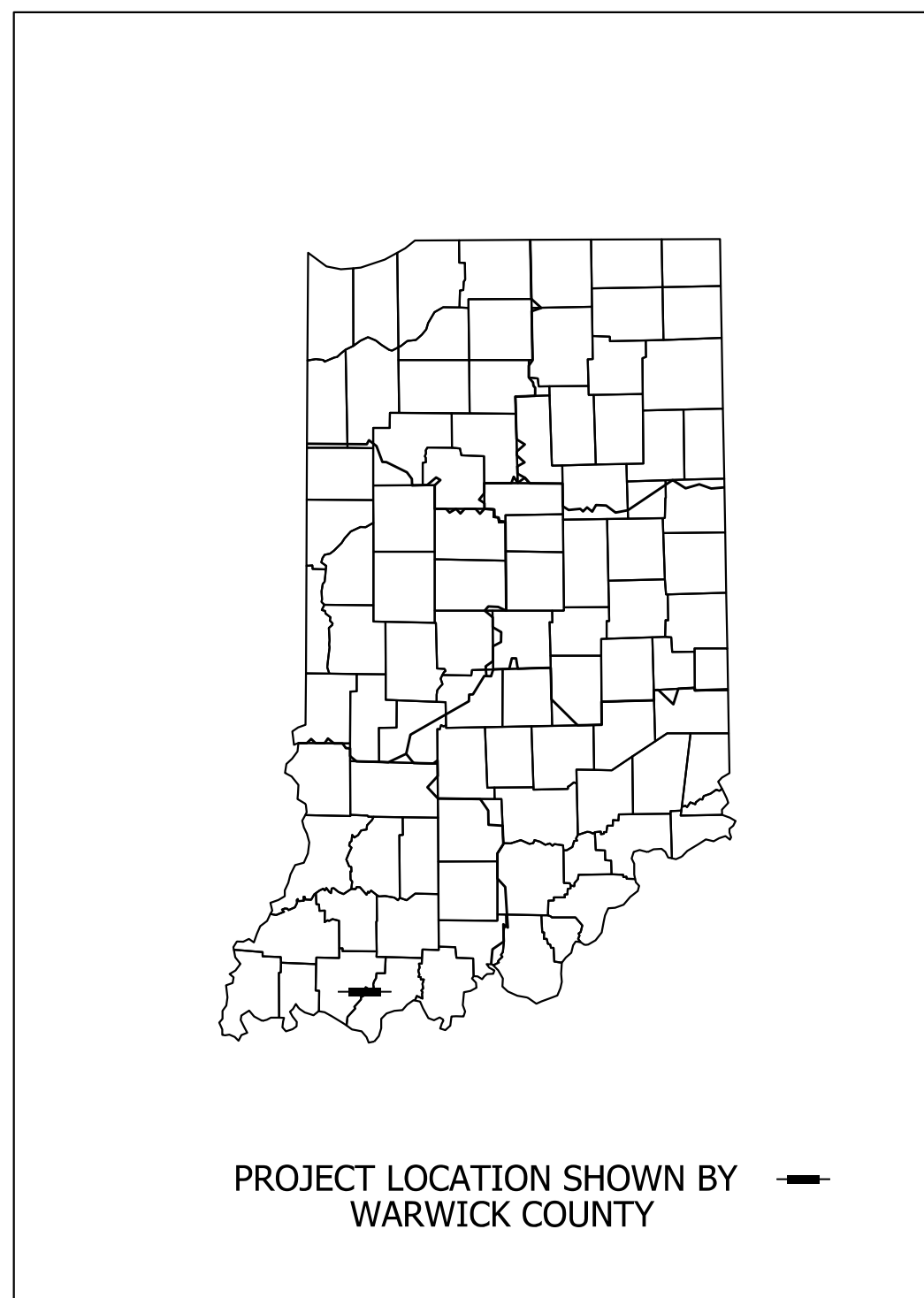
  

DESIGN DATA	
DESIGN SPEED	55 M.P.H.
PROJECT DESIGN CRITERIA	3R Non-Freeway
FUNCTIONAL CLASSIFICATION	Major Collector
RURAL/URBAN	Rural
TERRAIN	Level
ACCESS CONTROL	None

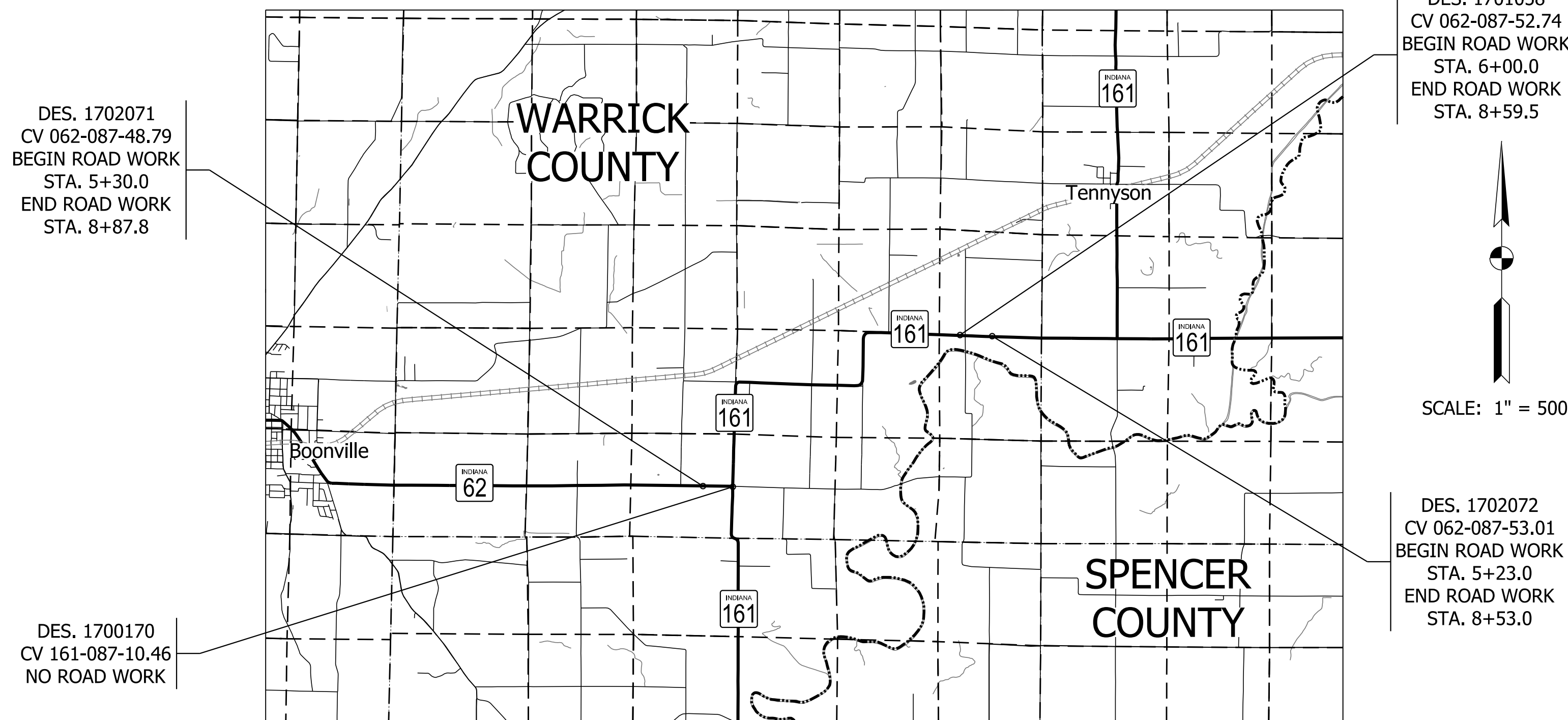
TRAFFIC DATA		DES. 1701058 DES. 1702072	
A.A.D.T.	(2022)	2351	V.P.D.
A.A.D.T.	(2042)	2883	V.P.D.
D.H.V	(12.3%)	317	V.P.H.
DIRECTIONAL DISTRIBUTION		49.8%(EB)	%
TRUCKS		8.0%	A.A.D.T.
		8.0%	D.H.V.

DESIGN DATA	
DESIGN SPEED	55 M.P.H.
PROJECT DESIGN CRITERIA	3R Non-Freeway
FUNCTIONAL CLASSIFICATION	Major Collector
RURAL/URBAN	Rural
TERRAIN	Level
ACCESS CONTROL	None



Four small structure replacements on SR 62 and SR 161.  
 Des. 1702071: Located 0.29 miles west of SR 62/SR 161 west junction, in Section 33, T-5-S, R-7-W, Skelton Township, Warrick County, Indiana  
 Des. 1700170: Located at the SR 62/SR 161 west junction, in Sections 33 & 34, T-5-S, R-7-W, Skelton Township, Warrick County, Indiana  
 Des. 1701058 : Located 1.52 miles west of SR 62/SR 161 east junction, in Section 24 & 25, T-5-S, R-7-W, Skelton Township, Warrick County, Indiana  
 Des. 1702072: Located 1.20 miles west of SR 62/SR 161 east junction, in Section 24 & 25, T-5-S, R-7-W, Skelton Township, Warrick County, Indiana



DES. 1701058	
GROSS LENGTH:	0.05 MI.
NET LENGTH:	0.05 MI.
MAX. GRADE:	0.30 %

DES. 1702071	
GROSS LENGTH:	0.07 MI.
NET LENGTH:	0.07 MI.
MAX. GRADE:	0.33 %

DES. 1702072	
GROSS LENGTH:	0.06 MI.
NET LENGTH:	0.06 MI.
MAX. GRADE:	2.20 %

LATITUDE: 87°11'24"W	LONGITUDE: 38°02'24"N	DES. 1700170
LATITUDE: 87°08'46"W	LONGITUDE: 38°03'40"N	DES. 1701058
LATITUDE: 87°11'31"W	LONGITUDE: 38°02'23"N	DES. 1702071
LATITUDE: 87°08'26"W	LONGITUDE: 38°03'39"N	DES. 1702072

LOCATION MAP  
WARRICK AND SPENCER COUNTY



PLANS PREPARED BY: GAI Consultants Inc. 317-570-6800  
 PHONE NUMBER

CERTIFIED BY: \_\_\_\_\_ DATE

APPROVED FOR LETTING: \_\_\_\_\_ DATE

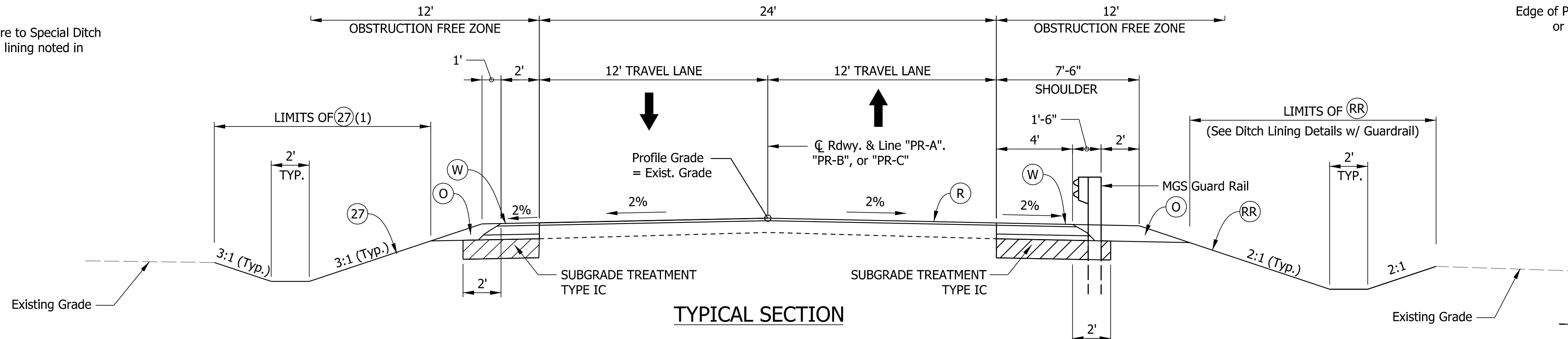
INDIANA DEPARTMENT OF TRANSPORTATION

INDIANA DEPARTMENT OF TRANSPORTATION  
 STANDARD SPECIFICATIONS DATED 2020  
 TO BE USED WITH THESE PLANS

DESIGNATION	
1700170	
SHEETS	
SURVEY BOOK	1 of 37
PROJECT	
CONTRACT	R-40551
	1700170

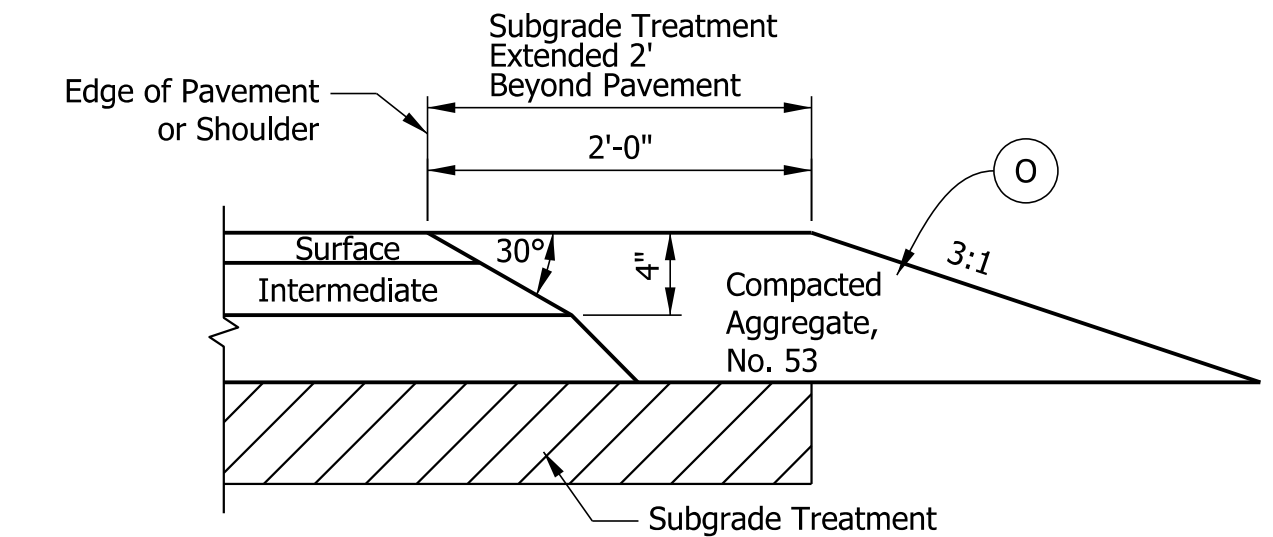
**NOTES:**

(1) If alternate ditch lining shown in Plan & Profiles, adhere to Special Ditch Lining Detail (No Guardrail), this sheet. If no special ditch lining noted in Plan & Profiles, apply 27 across entire width.

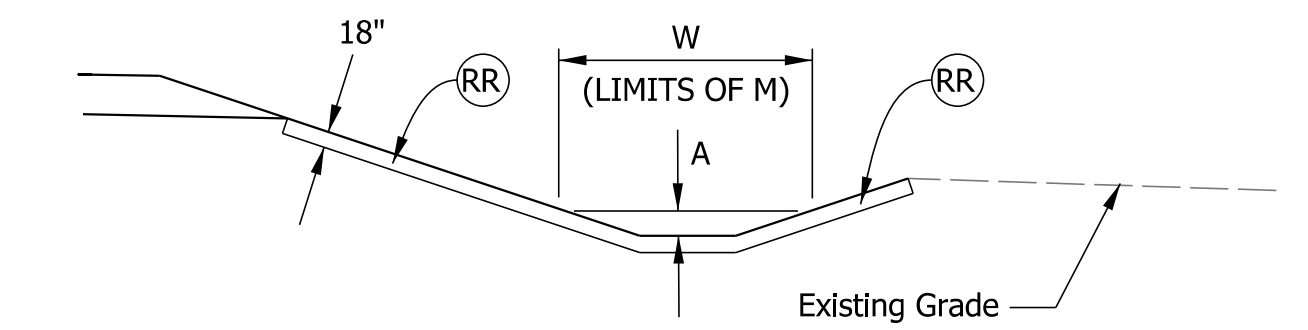


**TYPICAL SECTION**

Des. 1702071  
Sta. 5+30 Line "PR-B" to Sta. 6+62.8 Line "PR-B"  
Sta. 7+55 Line "PR-B" to Sta. 8+87.8 Line "PR-B" "Reverse"  
Des. 1702072  
Sta. 5+23 Line "PR-C" to Sta. 6+28 Line "PR-C"  
Sta. 7+48 Line "PR-C" to Sta. 8+53 Line "PR-C" "Reverse"

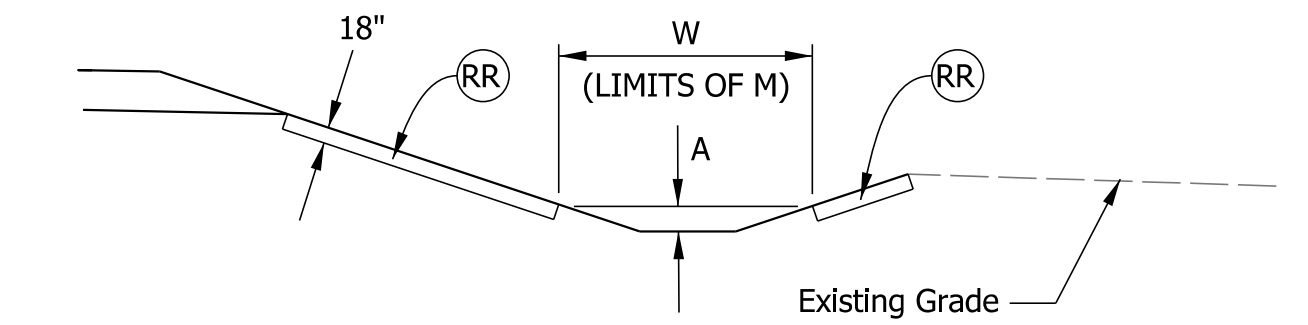


**SAFETY EDGE ON HMA PAVEMENT**  
NOT TO SCALE



**DITCH LINING DETAIL w/ GUARDRAIL (NON-JURISDICTIONAL)**

Applies to all ditches with 2:1 fore-slopes and back-slopes behind guardrail other than ditches noted in the Jurisdictional Detail (below)

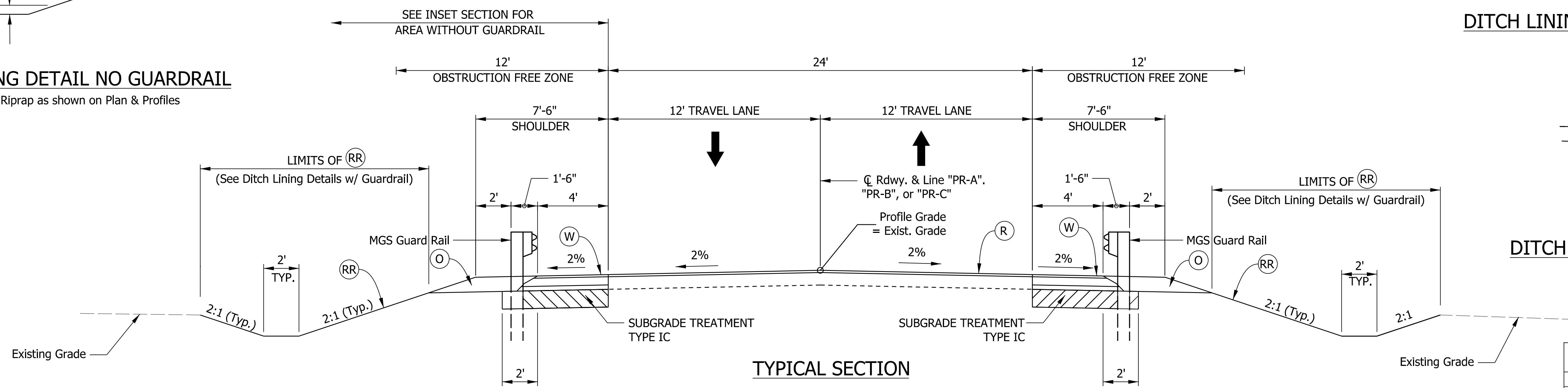
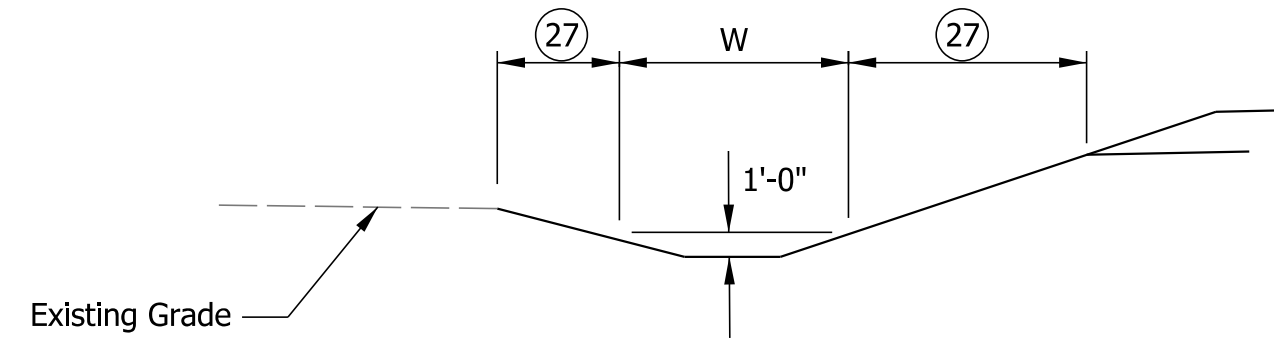


**DITCH LINING DETAIL w/ GUARDRAIL (JURISDICTIONAL)**

A = OHWM + 6"  
M = Material used within OHWM Width (W), per legend

**SPECIAL DITCH LINING DETAIL NO GUARDRAIL**

W = Limits of Sodding or Riprap as shown on Plan & Profiles



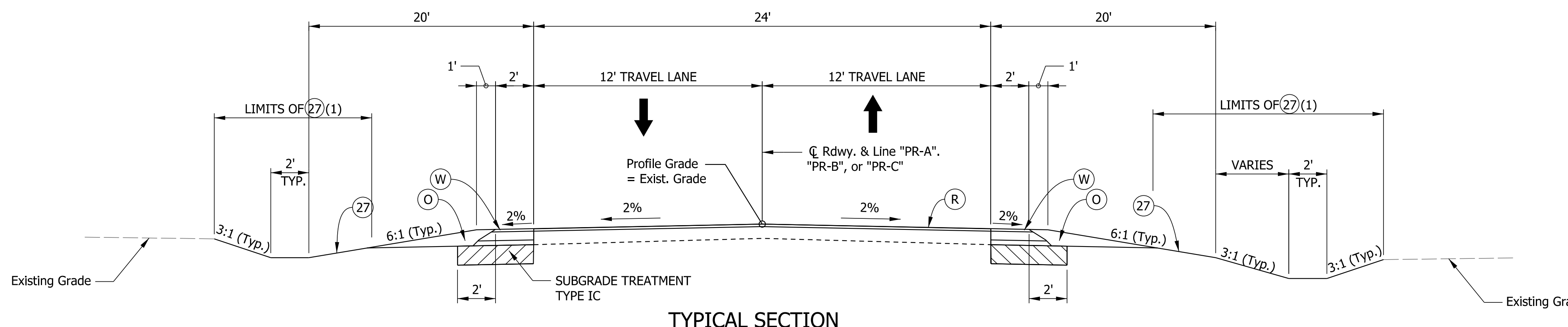
**TYPICAL SECTION**

Des. 1702071  
Sta. 6+62.8 Line "PR-B" to Sta. 7+55 Line "PR-B"  
Des. 1702072  
Sta. 6+28 Line "PR-C" to Sta. 7+48 Line "PR-C"

Des #	Line	Station			Side	OHWM (ft)	A (ft)	W (ft)	M
		From	To						
1702071	PR-B	7+33.0	8+87.8		Lt.	0.5	1.00	6.0	27
1702071	PR-B	7+03.5	8+87.8		Rt.	0.25	0.75	5.0	26
1700170	S-1	50+81.0	51+40.0		Rt.	0.75	1.25	7.0	27
1700170	S-1	53+01.0	53+59.5		Rt.	0.75	1.25	7.0	27

**LEGEND**

- (R) MILLING, ASPHALT, 1 1/2 IN. ON  
165 LBS/SYS QC/QA-HMA, 3, 70, SURFACE, 9.5 MM
- (K) 165 LBS/SYS QC/QA-HMA, 3, 70, SURFACE, 9.5 MM  
330 LBS/SYS QC/QA-HMA, 3, 70, INTERMEDIATE, 19.0 MM ON  
825 LBS/SYS QC/QA-HMA, 3, 64, BASE, 25.0 MM  
(See Culvert Details for Limits)
- (O) COMPACTED AGGREGATE, No. 53 (10 IN. MAX.)
- (W) 165 LBS/SYS QC/QA-HMA, 3, 70, SURFACE, 9.5 MM ON  
WIDENING WITH HMA, TYPE B:  
330 LBS/SYS HMA INTERMEDIATE, 19.0 MM ON  
7.5" COMPACTED AGGREGATE, No. 53  
(Depth Equals Mainline HMA Thickness minus 4.5")
- (27) SEEDING, TYPE R
- (RR) REVETMENT RIPRAP



**TYPICAL SECTION**

Des. 1701058  
Sta. 6+00 Line "PR-A" to Sta. 6+40.8 Line "PR-A"  
Sta. 7+50 Line "PR-A" to Sta. 8+59.5 Line "PR-A" "Reverse"

Plc:5/12/2020 10:33:48 AM By: MurrahMW Pen: Transportation.tbl Model:Sheet1



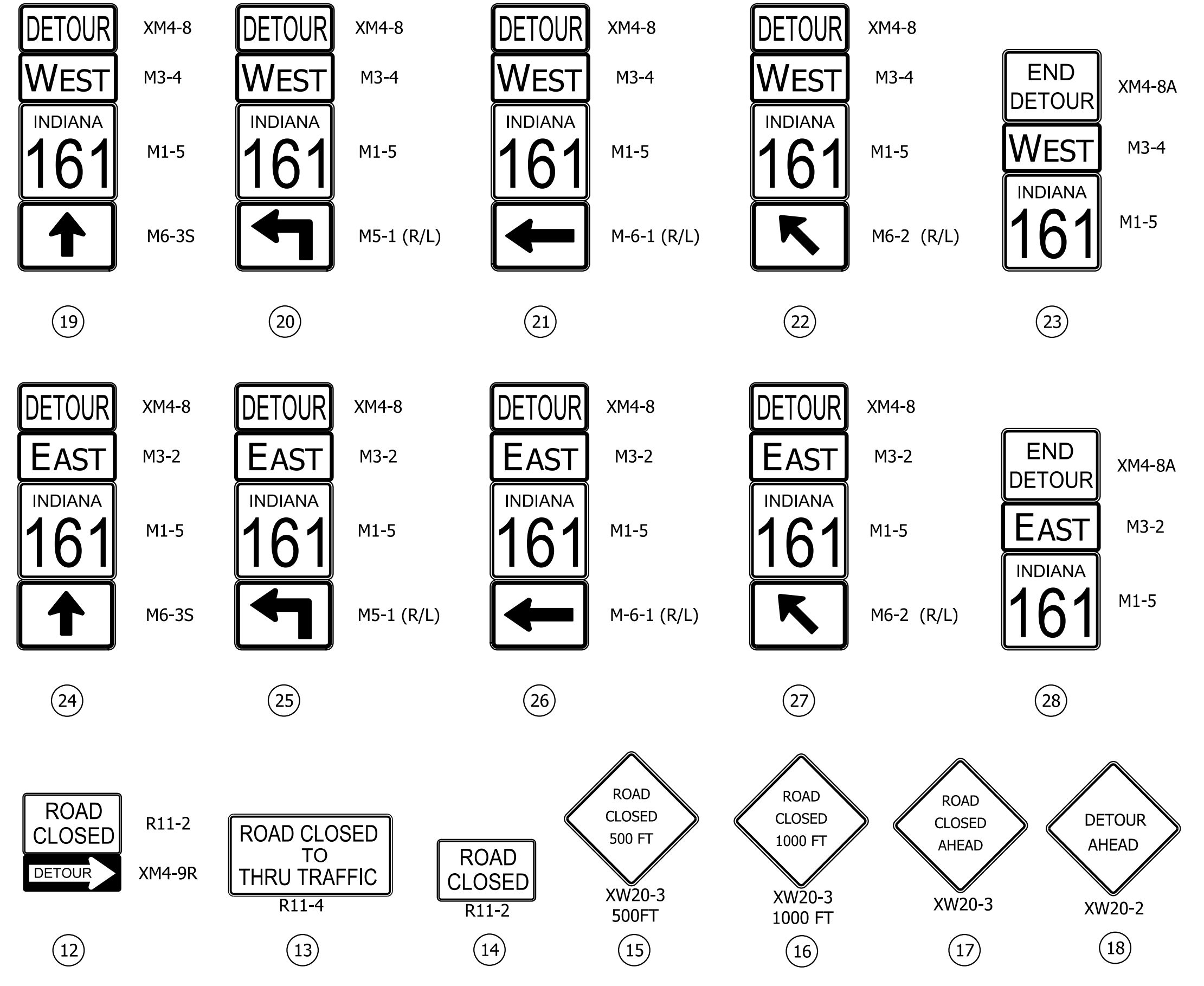
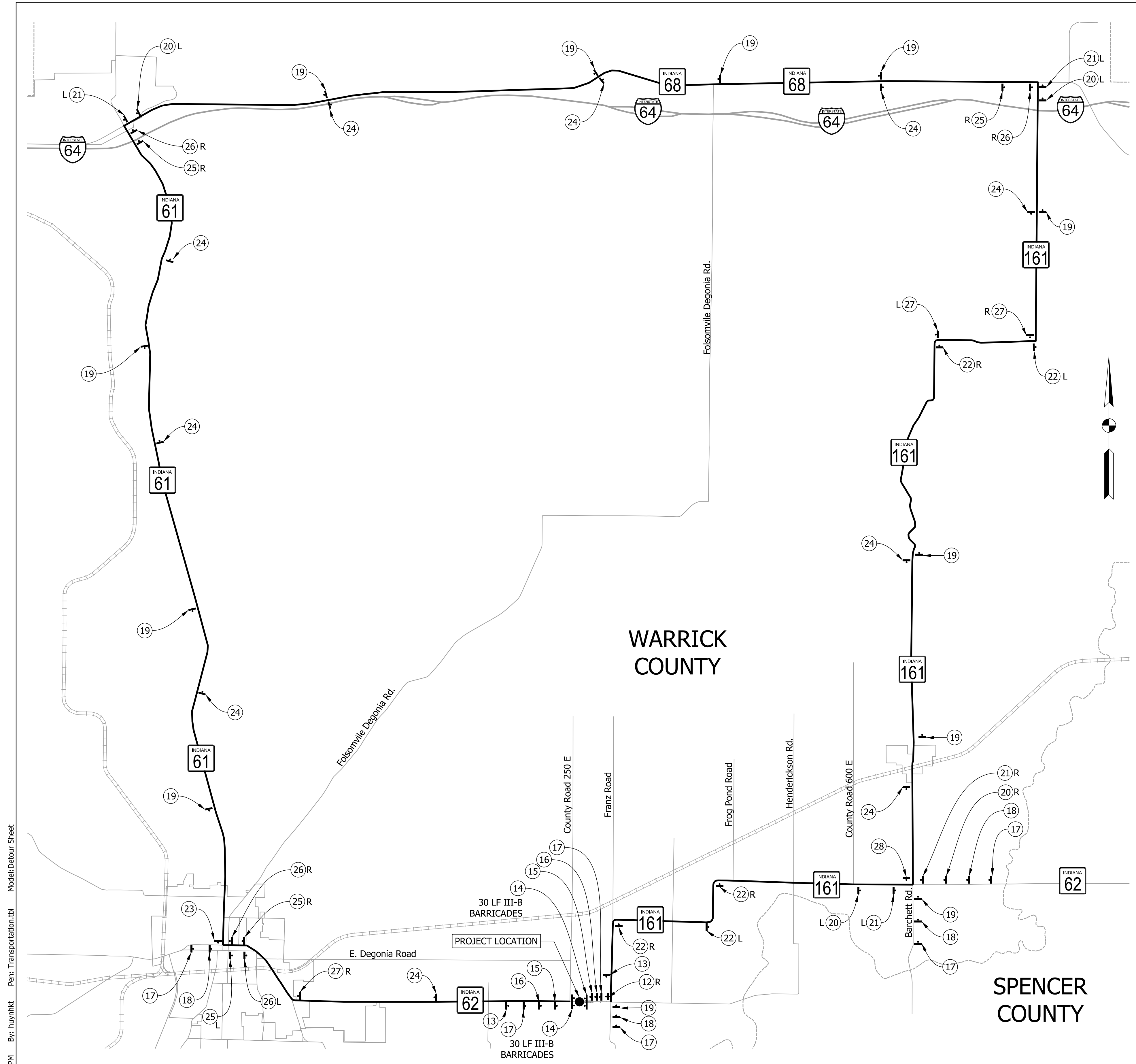
RECOMMENDED FOR APPROVAL	DESIGN ENGINEER	DATE
DESIGNED: ARW	DRAWN: KTH	
CHECKED: BWC	CHECKED: BWC	

**INDIANA DEPARTMENT OF TRANSPORTATION**

**TYPICAL SECTIONS**

SCALE	BRIDGE FILE
1/4" = 1'	
VERTICAL SCALE	DESIGNATION
	1701058, 1702071, 1702072
SURVEY BOOK	SHEETS
	3 of 41
CONTRACT	PROJECT
R-40551	1700170





**CONSTRUCTION SIGN SUMMARY TABLE**

LEGEND	DESCRIPTION	SIGN TYPE	GENERAL	I (05)	II (06/08)	III (07)	MAX TOTAL
15	ROAD CLOSED 500 FT (XW20-3) (36"x36")	A		2	2	2	2
16	ROAD CLOSED 1000 FT (XW20-3) (36"x36")	A		2	2	2	2
17	ROAD CLOSED AHEAD (XW20-3) (36"x36")	A		6	6	5	6
18	DETOUR AHEAD (XW20-2) (36"x36")	A		5	4	5	4
80	BARRICADE, III-B	BARR		96	120	60	120
13	ROAD CLOSED TO THRU TRAFFIC - (R11-4)(60" x 30")	RCSA		1	1	2	2
12	ROAD CLOSURE SIGN ASSEMBLY - R11-2 & XM4-10(L/R)	RCSA		2	1	1	2
14	ROAD CLOSURE SIGN ASSEMBLY - R11-2	RCSA		2	4	2	4
2	ADVANCE TURN DETOUR ROUTE MARKER ASSEMBLY (NORTH)	DRMA		3			3
9	ADVANCE TURN DETOUR ROUTE MARKER ASSEMBLY (SOUTH)	DRMA		4			4
20	ADVANCE TURN DETOUR ROUTE MARKER ASSEMBLY (WEST)	DRMA			3	4	4
25	ADVANCE TURN DETOUR ROUTE MARKER ASSEMBLY (EAST)	DRMA			4	4	4
3	DIRECTIONAL DETOUR ROUTE MARKER ASSEMBLY (NORTH)	DRMA		3			3
10	DIRECTIONAL DETOUR ROUTE MARKER ASSEMBLY (SOUTH)	DRMA		4			4
21	DIRECTIONAL DETOUR ROUTE MARKER ASSEMBLY (WEST)	DRMA			3	4	4
26	DIRECTIONAL DETOUR ROUTE MARKER ASSEMBLY (EAST)	DRMA			4	4	4
1	CONFIRMING DETOUR ROUTE MARKER ASSEMBLY (NORTH)	DRMA		8			8
8	CONFIRMING DETOUR ROUTE MARKER ASSEMBLY (SOUTH)	DRMA		6			6
19	CONFIRMING DETOUR ROUTE MARKER ASSEMBLY (WEST)	DRMA			12	11	12
24	CONFIRMING DETOUR ROUTE MARKER ASSEMBLY (EAST)	DRMA			11	10	11
4	DIRECTIONAL DETOUR ROUTE MARKER ASSEMBLY (NORTH)	DRMA		3			3
7	DIRECTIONAL DETOUR ROUTE MARKER ASSEMBLY (SOUTH)	DRMA		3			3
22	DIRECTIONAL DETOUR ROUTE MARKER ASSEMBLY (WEST)	DRMA			2	5	5
27	DIRECTIONAL DETOUR ROUTE MARKER ASSEMBLY (EAST)	DRMA			3	3	3
6	DIRECTIONAL DETOUR ROUTE MARKER ASSEMBLY (SOUTH)	DRMA		1			1
5	END DETOUR ROUTE MARKER ASSEMBLY (NORTH)	DRMA		1			1
11	END DETOUR ROUTE MARKER ASSEMBLY (SOUTH)	DRMA		1			1
23	END DETOUR ROUTE MARKER ASSEMBLY (WEST)	DRMA			1	1	1
28	END DETOUR ROUTE MARKER ASSEMBLY (EAST)	DRMA			1	1	1
			GENERAL	MAX TOTAL		TOTAL	
MAX. TOTAL TYPE "A" SIGNS = GENERAL + MAX. PHASE =			0	+	14	=	14
MAX. TOTAL BARRICADE TYPE III-B = GENERAL + MAX. PHASE =			0	+	120	=	120
MAX. TOTAL ROAD CLOSURE SIGN ASSEMBLY (R11-2) = GENERAL + MAX. PHASE =			0	+	2	=	2
MAX. TOTAL ROAD CLOSURE SIGN ASSEMBLY (R11-3) = GENERAL + MAX. PHASE =			0	+	2	=	2
MAX. TOTAL DETOUR ROUTE MARKER ASSEMBLY = GENERAL + MAX. PHASE =			0	+	86	=	86

Plct:10/31/2019 3:39:27 PM By: huythkt Per: Transportation.tbl Model: Detour Sheet



RECOMMENDED FOR APPROVAL \_\_\_\_\_ DESIGN ENGINEER DATE \_\_\_\_\_

DESIGNED: ARW DRAWN: KTH

CHECKED: BWC CHECKED: BWC

INDIANA DEPARTMENT OF TRANSPORTATION

MAINTENANCE OF TRAFFIC DETOUR ROUTE

SCALE 1" = 3600'

VERTICAL SCALE \_\_\_\_\_

SURVEY BOOK \_\_\_\_\_

CONTRACT R-40551

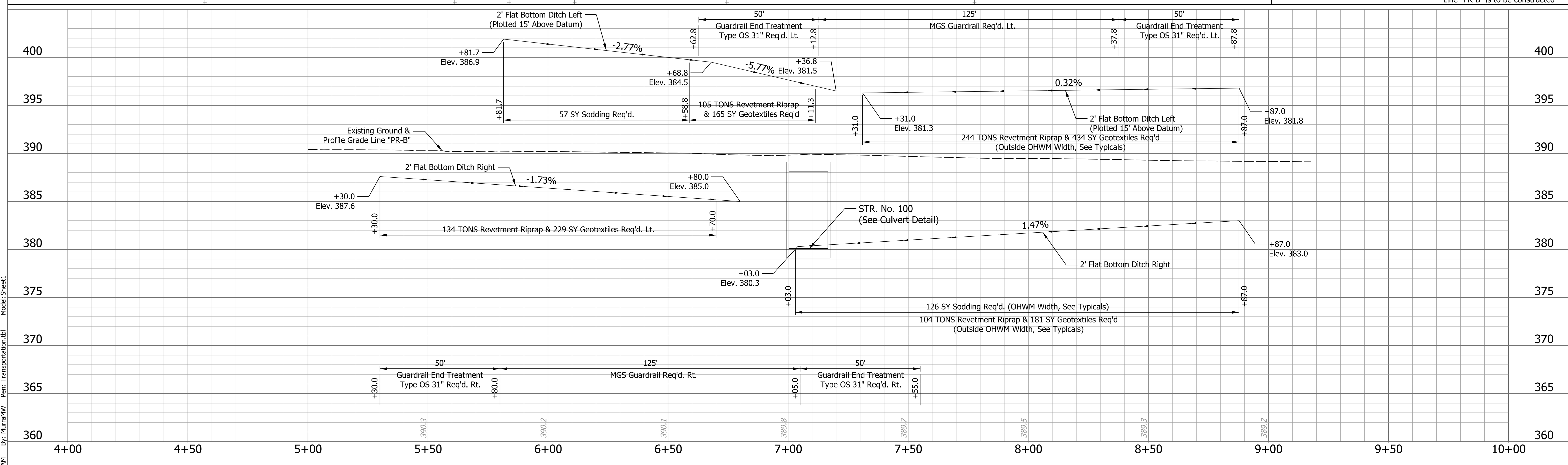
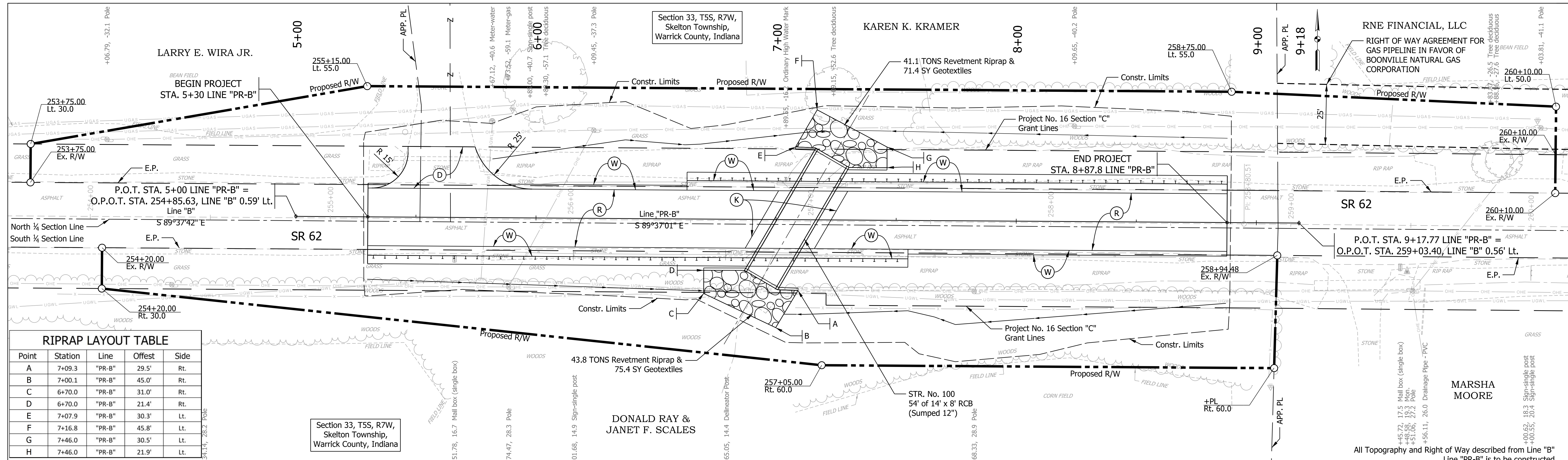
ASSET NUMBER CV 062-087-48.79

DESIGNATION 1702071

SHEETS 4 of 37

PROJECT 1700170





**LEGEND**

- (D) HMA for Approaches  
165 #/syd HMA Surface Type B on  
385 #/syd HMA Intermediate Type B on  
Subgrade Treatment Type II
- (K) FULL DEPTH HMA (See Typical Section)
- (R) MILL & OVERLAY (See Typical Section)
- (W) WIDENING WITH HMA, TYPE B (See Typical Section)



RECOMMENDED FOR APPROVAL

DESIGNED: ARW  
CHECKED: BWC

DESIGN ENGINEER DATE  
DRAWN: KTH  
CHECKED: BWC

INDIANA  
DEPARTMENT OF TRANSPORTATION

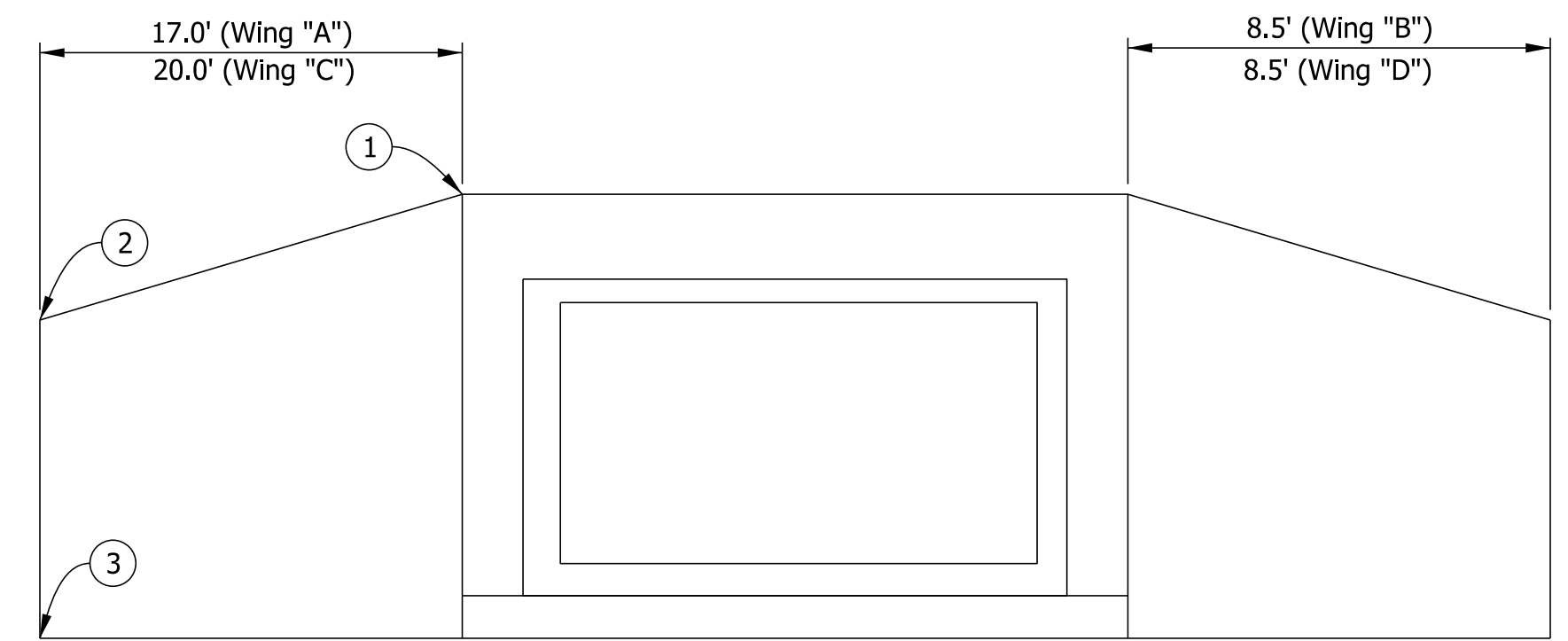
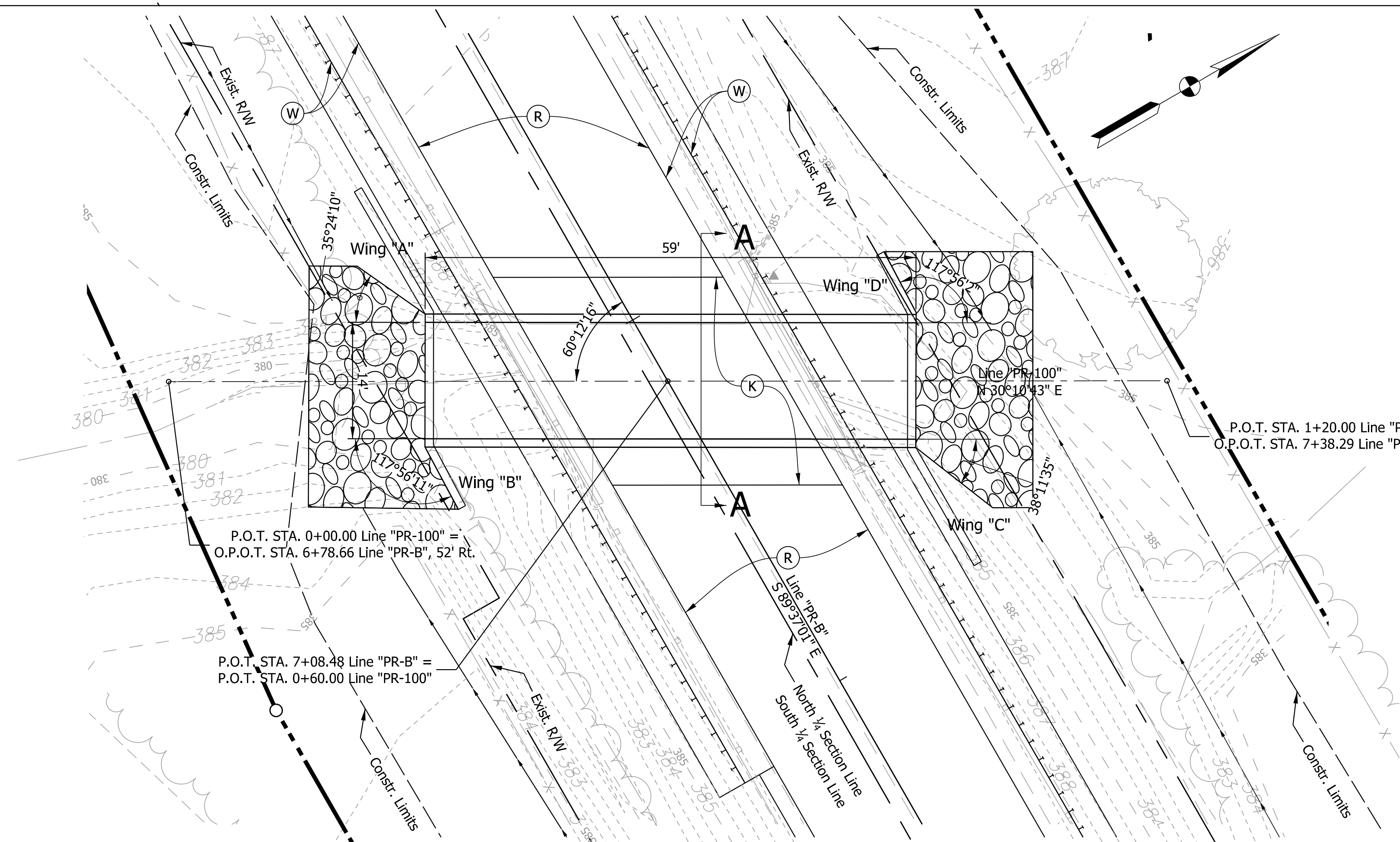
PLAN AND PROFILE  
LINE "PR-B" (SR 62)

HORIZONTAL SCALE 1" = 20'	ASSET NUMBER CV 062-087-48.79
VERTICAL SCALE 1" = 5'	DESIGNATION 1702071
SURVEY BOOK	SHEETS
CONTRACT R-40551	7 of 41 PROJECT 1700170

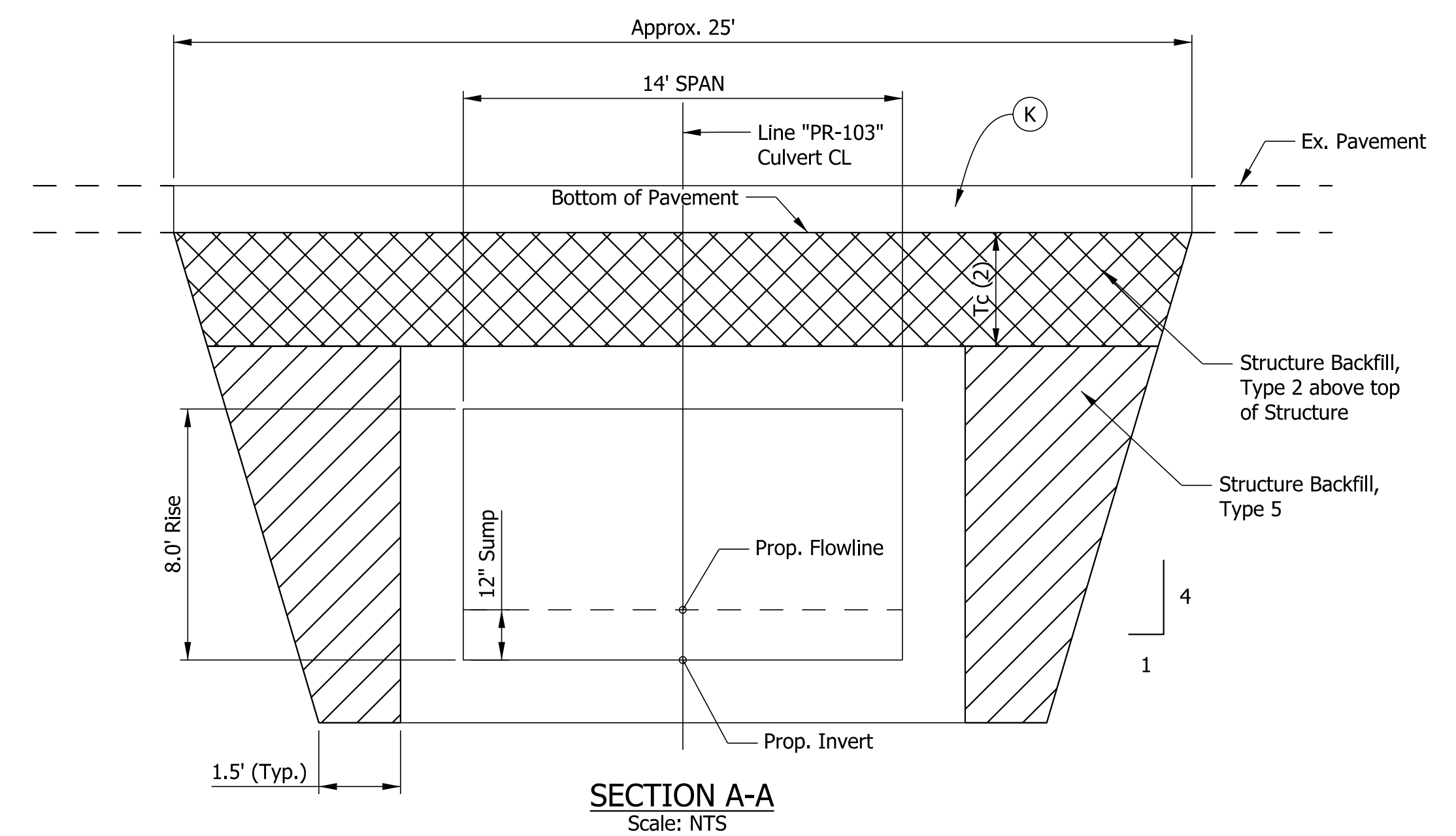
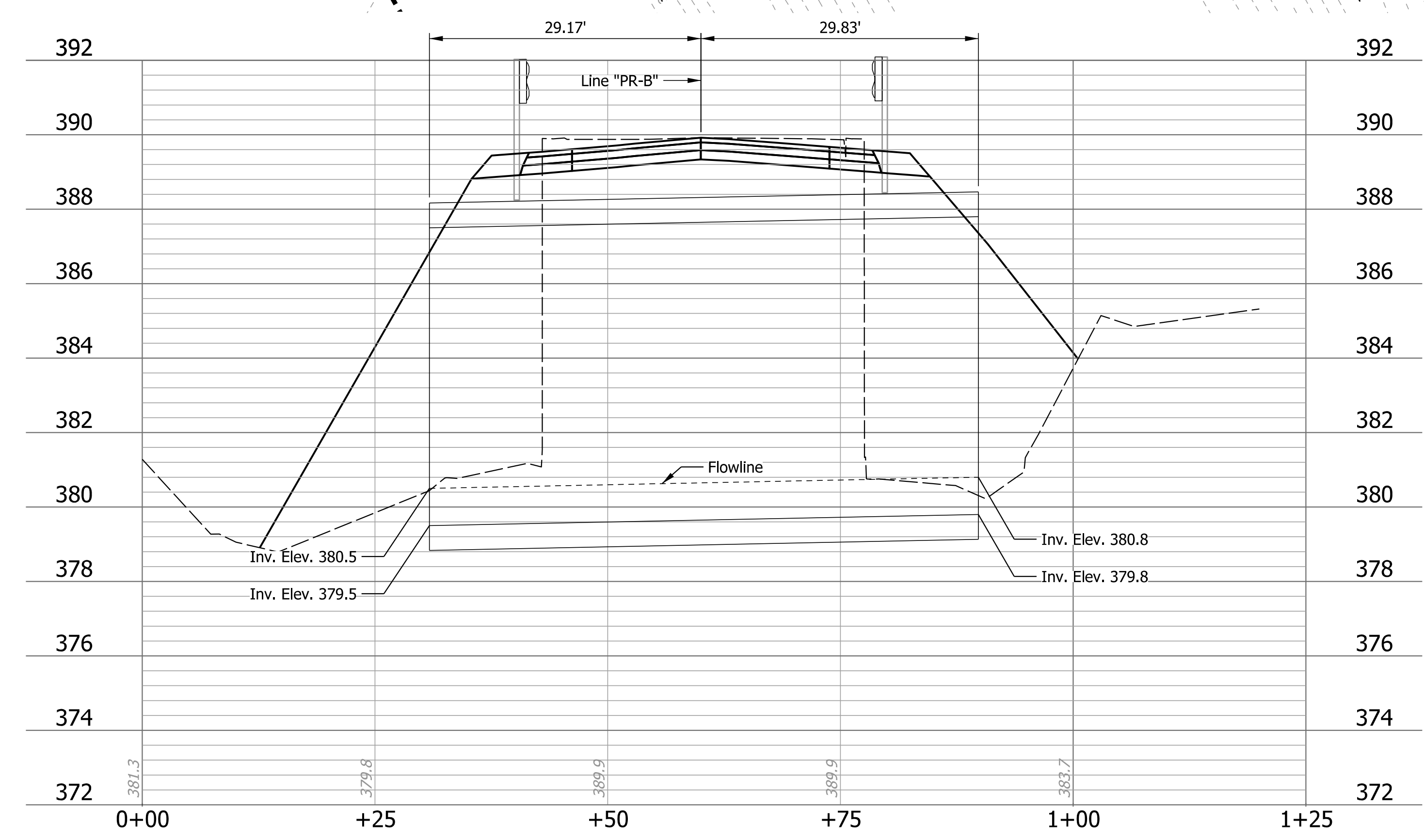
Plot: 5/12/2020 10:56:15 AM By: MurrahMW Per: Transportation.tbl Model: Sheet1



WING	TOP ELEV. ①	TOP ELEV. ②	BOT. ELEV. ③	AREA (SF)
"A"	389.00	389.00	377.50	x
"B"	389.00	385.00	377.50	x
"C"	389.30	388.68	377.80	x
"D"	389.30	386.50	377.80	x



**WINGWALL LAYOUT DETAIL**  
Scale: NTS



**SECTION A-A**  
Scale: NTS

- Notes:
- Limits of Pavement removal and new full depth pavement varies by trench depth, approximately 25' for Structure 100.
  - Tc varies 0.9' to 1.1' (assuming 12" Pavement Depth)

**REINFORCED CONCRETE BOX STRUCTURE**  
59'-0" LONG AT 14' SPAN x 8' RISE  
24'-0" CLEAR ROADWAY  
0.03 miles west of SR 161  
WARRICK COUNTY, IN.

- LEGEND**
- (K) FULL DEPTH HMA (See Typical Section)
  - (R) WIDENING WITH HMA, TYPE B (See Typical Section)
  - (W) MILL & OVERLAY (See Typical Section)



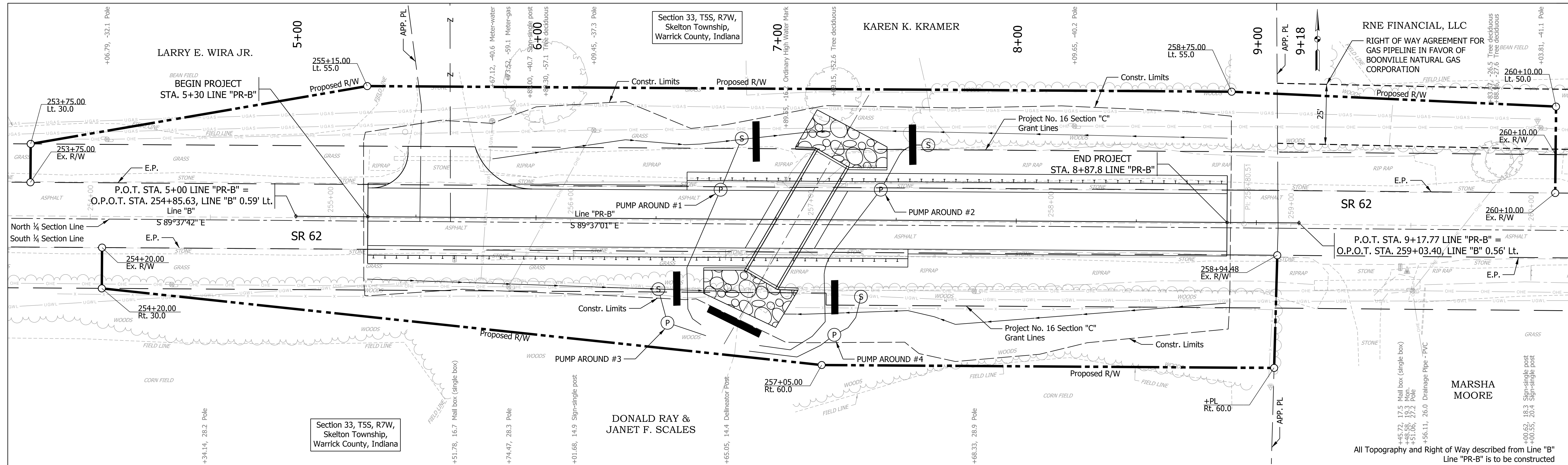
RECOMMENDED FOR APPROVAL	DESIGN ENGINEER	DATE
DESIGNED: ARW	DRAWN: KTH	
CHECKED: BWC	CHECKED: BWC	

INDIANA  
DEPARTMENT OF TRANSPORTATION

GENERAL PLAN  
STRUCTURE 100

SCALE	ASSET NUMBER
1" = 10'	CV 062-087-48.79
VERTICAL SCALE	DESIGNATION
1" = 2'	1702071
SURVEY BOOK	SHEETS
	12 of 37
CONTRACT	PROJECT
R-40551	1700170

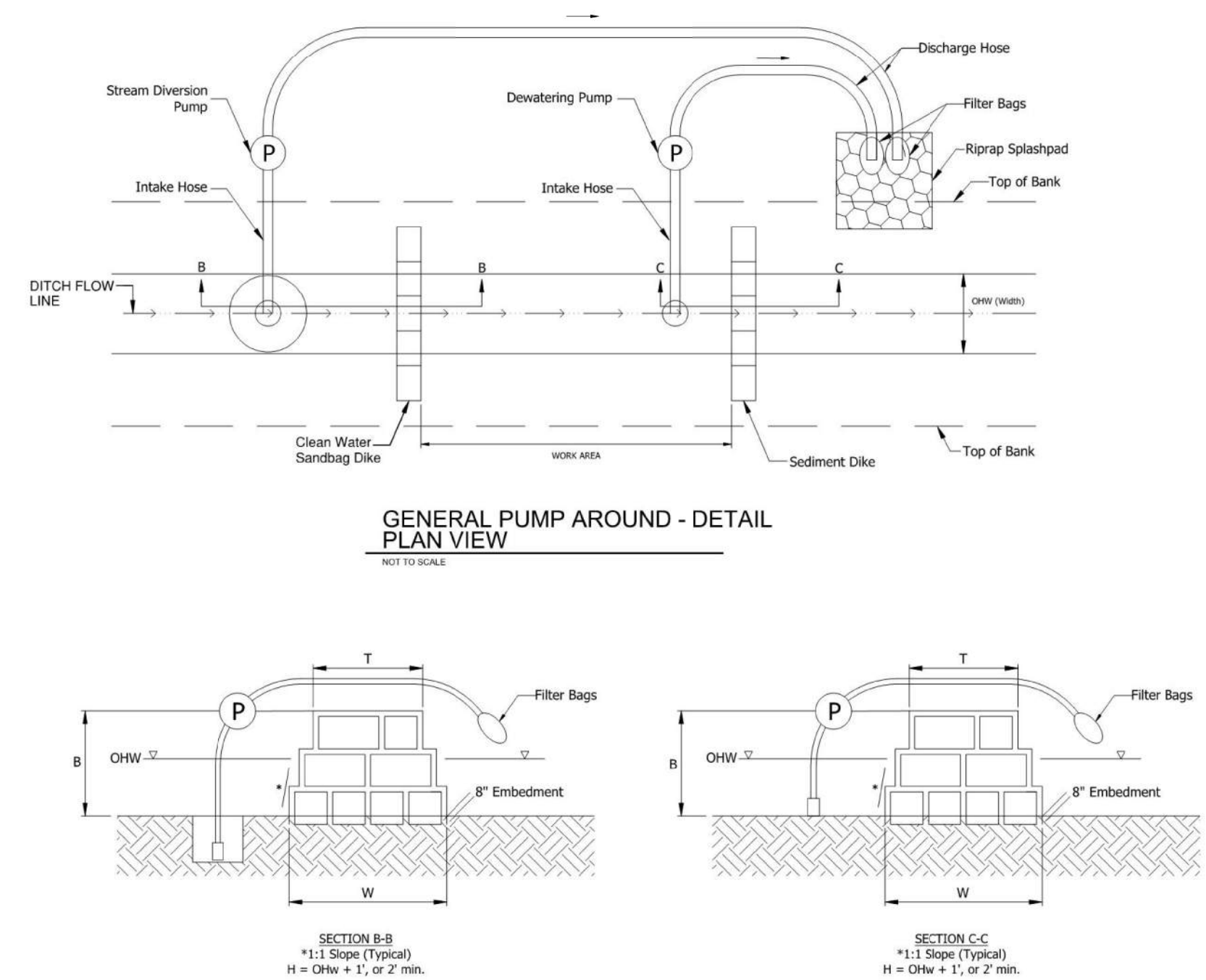




Section 33, T5S, R7W,  
Skelton Township,  
Warrick County, Indiana

DONALD RAY &  
JANET F. SCALES

All Topography and Right of Way described from Line "B"  
Line "PR-B" is to be constructed



**EROSION CONTROL NOTES:**

- 1) PERIMETER PROTECTION SHOULD BE INSTALLED PRIOR TO LAND DISTURBANCE ACTIVITIES.
- 2) TEMPORARY SEEDING AND MULCH SHALL BE PLACED ON DISTURBED AREAS WHERE ADDITIONAL WORK IS NOT SCHEDULED FOR AT LEAST 7 CALENDAR DAYS.  
QUANTITIES (ESTIMATED TWO TIMES AREA OF SEED)  
TEMPORARY SEED MIXTURE 156 LBS (150 LBS / ACRE)  
TEMPORARY MULCH 2.6 TON (2.5 TONS / ACRE)
- 3) CHECK DAMS SHOULD BE INSTALLED AS SOON AS PRACTICAL AFTER DITCH GRADING.
- 4) SOD / SEEDING SHALL BE PLACED IMMEDIATELY AFTER FINAL GRADE IS ESTABLISHED.
- 5) EXISTING DITCHES OUTSIDE OF CONSTRUCTION LIMITS SHALL BE UNDISTURBED AS MUCH AS PRACTICAL.
- 6) ANY VEGETATION DISTURBED DURING INSTALLATION OR REMOVAL OF PERIMETER PROTECTION MEASURES SHALL BE RESTORED IMMEDIATELY.

SUMMARY OF TEMPORARY IMPACTS - JURISDICTIONAL WATERS										
Pump	Stream	OHWM		Embedment	B	Dike Width		Impact Below OHWM		
		Depth (A)	Width			Top (T)	Bottom (W)	Area	Area	Volume
		(ft)	(ft)	(ft)	(ft)	(ft)	(ft)	(sft)	(acre)	(cys)
2	UNT to Otter Creek	0.5	6	0.67	2	5.5	9.5	114.0	0.003	2.11
4	UNT 1	0.25	3	0.67	2	5.5	9.5	28.5	0.001	0.26

Note: Pump #2 impact includes downstream sandbag dike

Plot: 5/12/2020 12:18:03 PM By: MurrahMW Pen: Transportation.tbl Model: Sheet1

- LEGEND**
- (S) SUMP HOLE WITH PUMP INTAKE
  - (P) PUMP
  - SANDBAGS WITH IMPERVIOUS SHEETING



RECOMMENDED FOR APPROVAL \_\_\_\_\_  
DESIGN ENGINEER DATE \_\_\_\_\_  
DESIGNED: ARW DRAWN: MWM  
CHECKED: BWC CHECKED: BWC

INDIANA  
DEPARTMENT OF TRANSPORTATION  
  
EROSION CONTROL PLAN  
LINE "PR-B" (SR 62)

HORIZONTAL SCALE	ASSET NUMBER
1" = 20'	CV 062-087-48.79
VERTICAL SCALE	DESIGNATION
1" = 5'	1702071
SURVEY BOOK	SHEETS
	38 of 41
CONTRACT	PROJECT
R-40551	1700170