

PROJECT	1900138
DESIGNATION	1900138
CONTRACT	R-42375

INDIANA DEPARTMENT OF TRANSPORTATION



ROAD PLANS

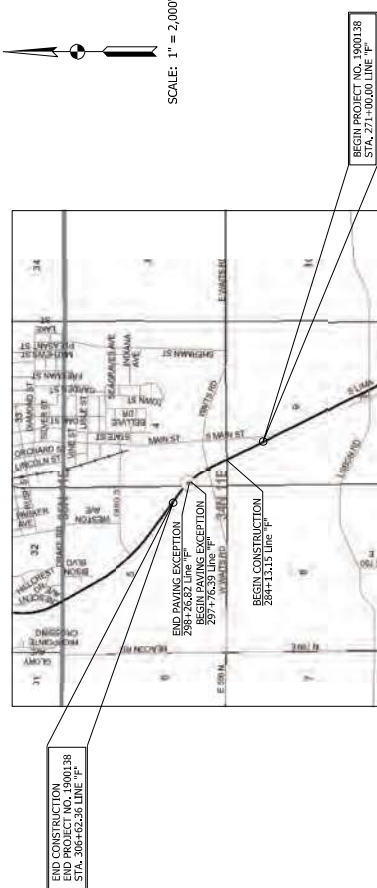
ROUTE: S.R. 3 AT: RP 200+0.974
 PROJECT NO. 1900138 P.E.
 1900138 R/W
 1900138 CONST.

NO ADDITIONAL RIGHT OF WAY
 REQUIRED FOR THIS PROJECT

Intersection Improvement at S.R. 3 and Waits Road
 from approx. 2,000 feet south of the Intersection
 to approx. 1,500 feet north of the Intersection.

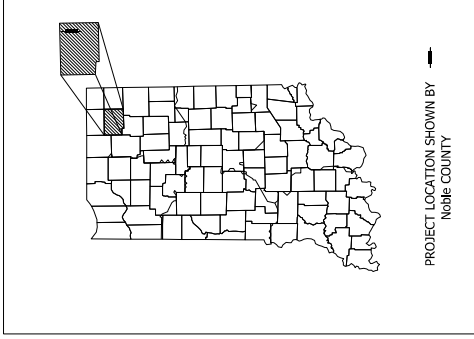
Sections 4, 5, and 9, T-34-N, R-11-E, Allen Township, Noble County, Indiana

PRELIMINARY FIELD CHECK
 JANUARY 17, 2022



TRAFFIC DATA	Line "F" - S.R. 3	Line "S-3-F" - Waits Rd.
A.A.C.T.	13,500 V.P.D.	678 V.P.D.
K.A.A.C.T.	15,260 V.P.A.	1,129 V.P.A.
D.A.V.	1,894 V.P.A.	146 V.P.A.
DIRECTIONAL DISTRIBUTION	51 %	59 %
TRUCKS	3.0 %	6.0 %
	30.0 % D.A.V.	50.0 % D.A.V.

DESIGN DATA	Line "F" - S.R. 3	Line "S-3-F" - Waits Rd.
DESIGN SPEED	55 MPH	30 Hwy / 40 West LOCAL
PROJECT DESIGN CRITERIA	3R (New-Freeway)	3R (New-Freeway)
CLASSIFICATION	ROADWAY	ROADWAY
RURAL/URBAN	Roadway	Roadway
TERRAIN	Level	Level
ACCESS CONTROL	None	None



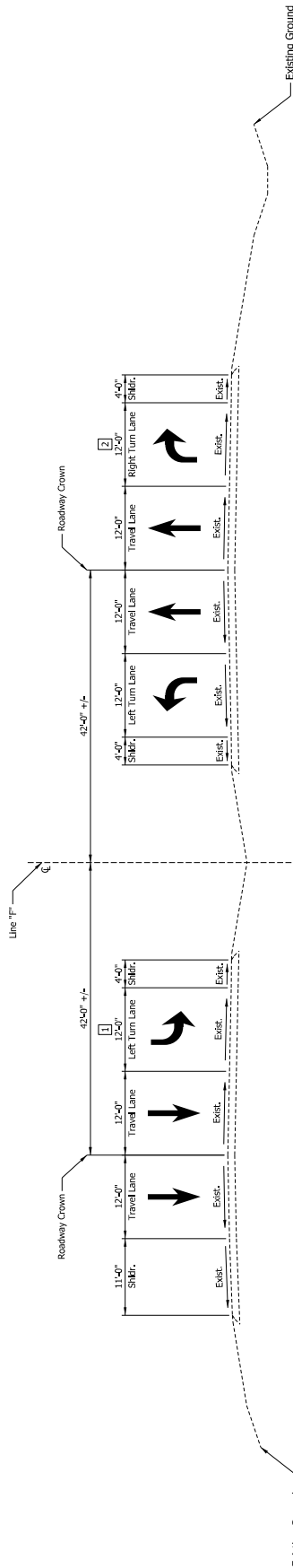
PROJECT LOCATION SHOWN BY
 Noble County

LATITUDE: 41°25'30" LONGITUDE: 85°16'05"

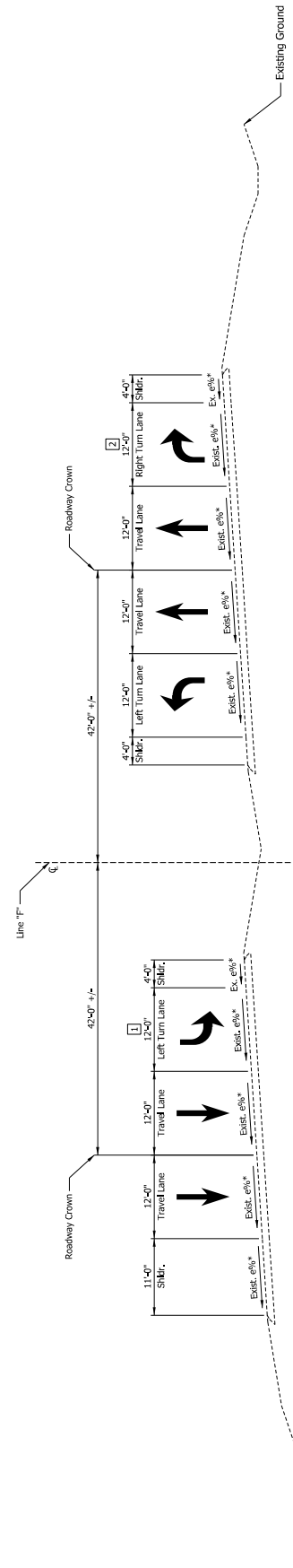
GROSS LENGTH: 0.675 MI.
 NET LENGTH: 0.416 MI.
 MAX. GRADE: 0.72 %

Location Map
 Noble County

PLANS PREPARED BY: CRAWFORD, MURPHY & TILLY, INC. CERTIFIED BY: [Signature] APPROVED FOR LETTING: [Signature]	BRIDGE FILE DESIGNATION: 1900138 SURVEY BOOK: [Blank] ELECTRONIC: [Blank] of 54 CONTRACT: R-42375 PROJECT: 1900138
	INDIANA DEPARTMENT OF TRANSPORTATION STANDARD SPECIFICATIONS DATED 2022 TO BE USED WITH THESE PLANS



EXISTING TYPICAL SECTION - SR 3
 STA. 284+00.00 TO STA. 289+83.14"
 STA. 304+08.14 TO STA. 307+00.00 "



EXISTING TYPICAL SUPERELEVATED SECTION - SR 3
 STA. 289+83.14 TO STA. 304+08.14 "

*See Superlevation details for slope transitions

1 Lane begins at Sta. 291+82.10
 Varies from 12'-0" at Sta. 296+00.00 to 0'-0" at Sta. 297+50.00 "
 0'-0" from Sta. 297+50.00 to Sta. 307+00.00 "

2 0'-0" from Sta. 284+00.00 to Sta. 284+38.14 "
 Varies from 0'-0" at Sta. 284+38.14 to 12'-0" at Sta. 285+88.14 "
 Lane ends at Sta. 290+82.10 "

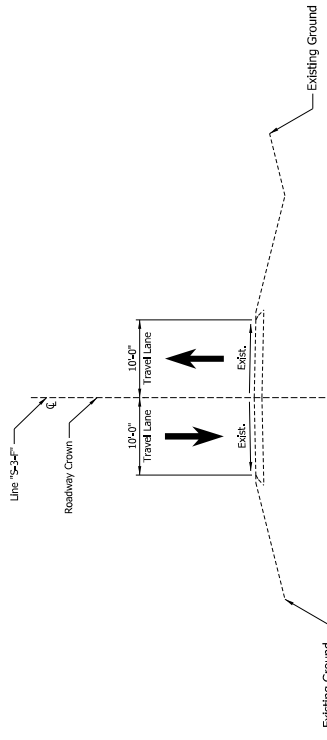
HORIZONTAL SCALE	BRIDGE FILE
VERTICAL SCALE	DESIGNATION
1" = 1'	190038
SURVEY BOOK	SHEETS
ELECTRONIC	3 of 54
CONTRACT	PROJECT
R-42375	190038

INDIANA	DEPARTMENT OF TRANSPORTATION
EXISTING TYPICAL CROSS SECTIONS	
LINE "F"	

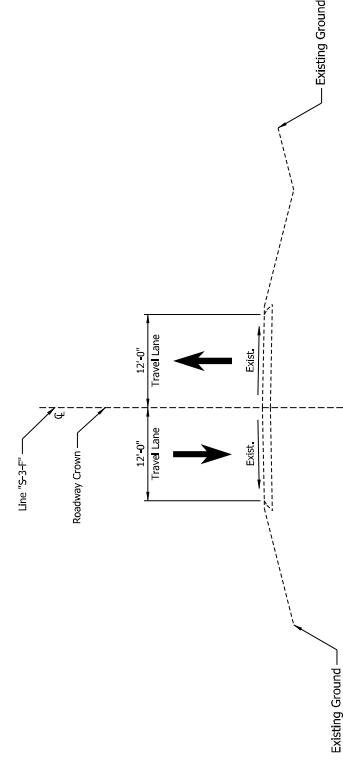
RECOMMENDED FOR APPROVAL	DESIGN ENGINEER	DATE
DESIGNED: EJM	10/12/2021	10/13/2021
CHECKED: EJR	10/26/2021	10/26/2021

NOT FOR CONSTRUCTION

LEGEND:	Variable Depth Compacted Aggregate, No. 53
(K1)	Sealing
(6)	Full Depth HMA, Consisting of: 10" # SYD, CC-Q-HMA, 4, 76, Surface, 3.5 mm on 2" # SYD, CC-Q-HMA, 4, 76, Intermediate, 3.5 mm on 3" # SYD, CC-Q-HMA, 4, 64, Base, 25.0 mm on 2" # SYD, CC-Q-HMA, 4, 76, Intermediate, 3.5 mm on 3" # SYD, CC-Q-HMA, 4, 76, Intermediate, 3.5 mm on 3" # SYD, CC-Q-HMA, 4, 64, Base, 19.0 mm on Subgrade Treatment Type IVA

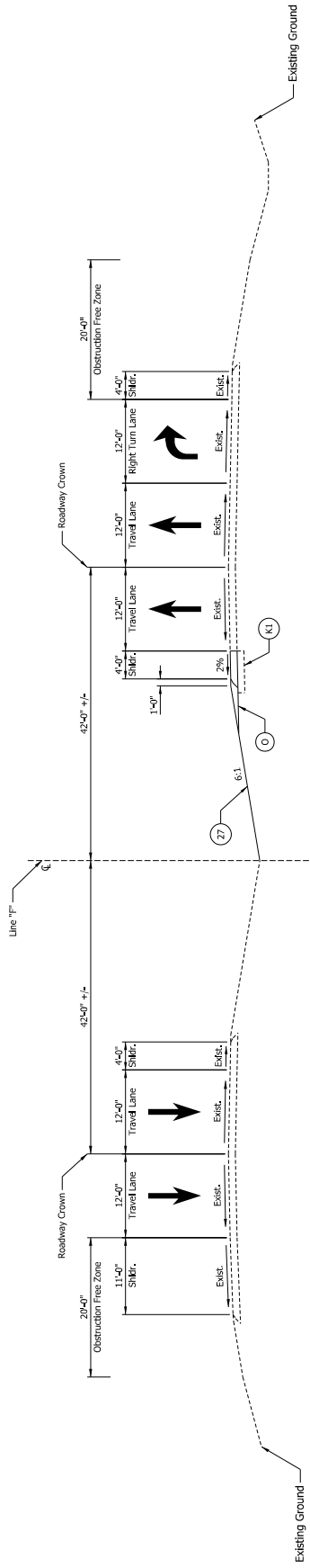


EXISTING TYPICAL SECTION - WAITS ROAD
 STA. 47+00.00 TO STA. 50+00.00 "S-3-F"

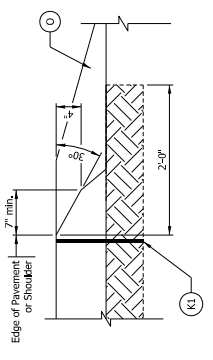


EXISTING TYPICAL SECTION - WAITS ROAD
 STA. 50+00.00 TO STA. 55+00.00 "S-3-F"

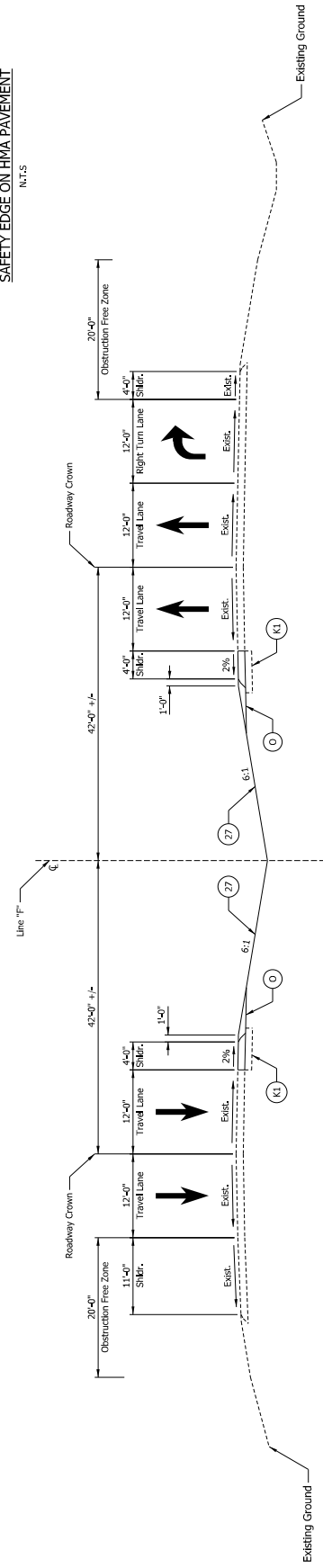
LEGEND: (K) Full Depth HMA, Consisting of: 10" #1SYD, CC-Q-HMA, 4, 76, Surface, 3.5 mm on 10" #1SYD, CC-Q-HMA, 4, 76, Intermediate CG, 15.0 mm on 3" #1SYD, CC-Q-HMA, 4, 64, Base, 25.0 mm on 250 #1SYD, CC-Q-HMA, 4, 76, Intermediate CG, 15.0 mm on 230 #1SYD, CC-Q-HMA, 4, 64, Base, 19.0 mm on Subgrade Treatment Type IVA	(O) Variable Depth Compacted Aggregate, No. 53 (Z) Sealing	RECOMMENDED FOR APPROVAL DESIGNED: EJV CHECKED: ESR	DESIGN ENGINEER 10/12/2021 10/26/2021	DATE 10/13/2021 10/26/2021	INDIANA DEPARTMENT OF TRANSPORTATION EXISTING TYPICAL CROSS SECTIONS LINE "S-3-F"	HORIZONTAL SCALE VERTICAL SCALE SURVEY BOOK ELECTRONIC CONTRACT 442775	BRIDGE FILE DESIGNATION SHEETS PROJECT 1900138 1900138 4 of 54 1900138
	NOT FOR CONSTRUCTION		DESIGNED: EJV CHECKED: ESR	DESIGN ENGINEER 10/12/2021 10/26/2021	DATE 10/13/2021 10/26/2021	INDIANA DEPARTMENT OF TRANSPORTATION EXISTING TYPICAL CROSS SECTIONS LINE "S-3-F"	HORIZONTAL SCALE VERTICAL SCALE SURVEY BOOK ELECTRONIC CONTRACT 442775



TYPICAL SECTION - SR 3
STA. 284+13.15 TO STA. 289+17.60 'F'



SAFETY EDGE ON HMA PAVEMENT
N.T.S.



TYPICAL SECTION - SR 3
STA. 289+17.60 TO STA. 289+83.14 'F'

Note:
The assumed pavement section matches the Engineer's Assessment.
A pavement design will be completed for a future submittal.

LEGEND:

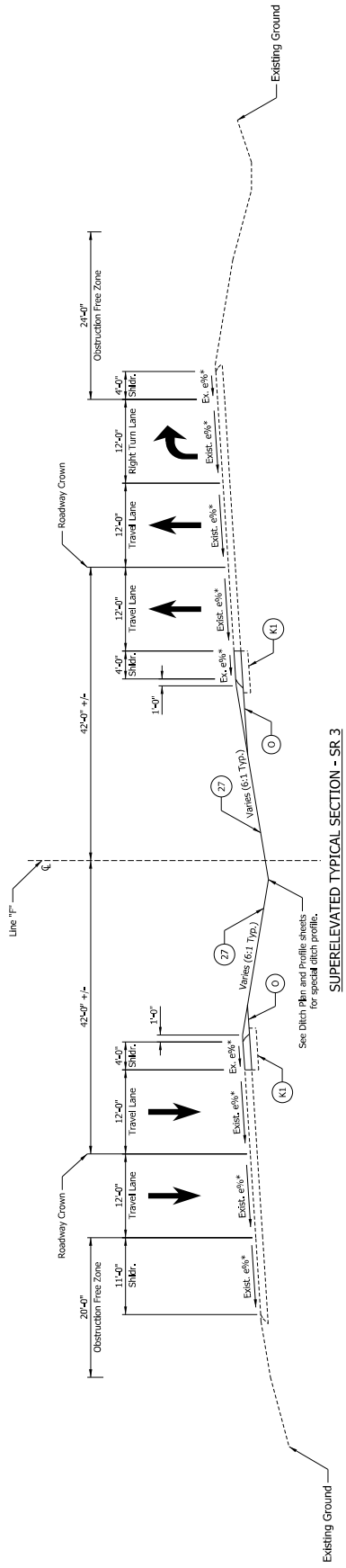
- (O) Variable Depth Compacted Aggregate, No. 53
- (Z) Sealing
- (K1) Full Depth HMA, Consisting of:
105 #/SYD, CC/QA-HMA, 4, 76; Surface, 3.5 mm on
135 #/SYD, CC/QA-HMA, 4, 76; Intermediate OC, 15.0 mm on
330 #/SYD, CC/QA-HMA, 4, 64; Base, 25.0 mm on
250 #/SYD, CC/QA-HMA, 4, 76; Intermediate OC, 15.0 mm on
330 #/SYD, CC/QA-HMA, 4, 64; Base, 19.0 mm on
Subgrade Treatment Type IVA

NOT FOR CONSTRUCTION

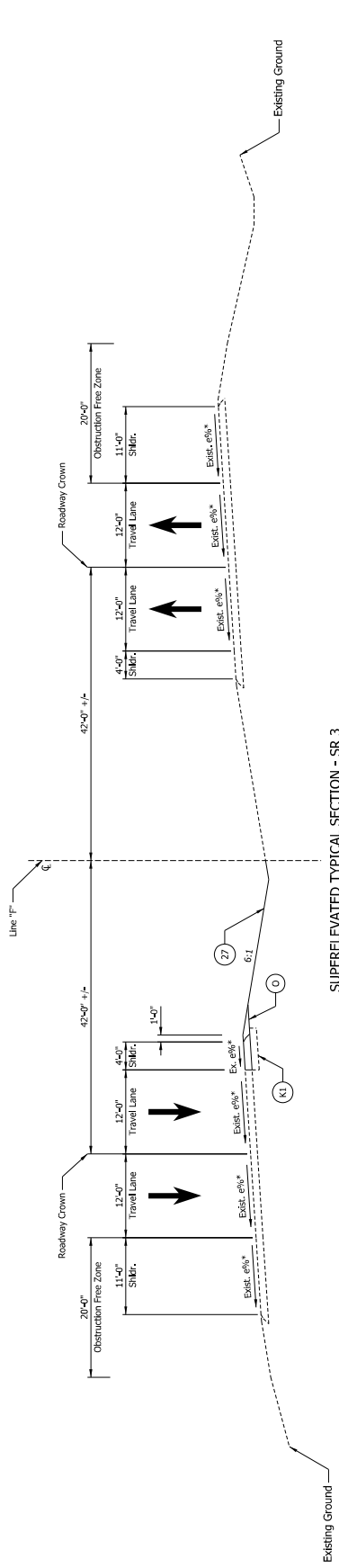
RECOMMENDED FOR APPROVAL	DESIGN ENGINEER	DATE
DESIGNED: EJM	10/12/2021	10/13/2021
CHECKED: EJR	10/26/2021	10/26/2021

INDIANA
DEPARTMENT OF TRANSPORTATION
TYPICAL CROSS SECTIONS
LINE 1\"/>

HORIZONTAL SCALE	BRIDGE FILE
VERTICAL SCALE	DISIGNATION
1\"/>	
SURVEY BOOK	SHEETS
ELECTRONIC	PROJECT
CONTRACT	5 of 54
442375	1900138



SUPERELEVATED TYPICAL SECTION - SR 3
 STA. 289+83.14 TO STA. 292+09.67 "F"



SUPERELEVATED TYPICAL SECTION - SR 3
 STA. 292+09.67 TO STA. 297+76.39 "F"

Paving Exception:
 Sta. 297+76.39 to Sta. 298+26.82 "F"

*See Superlevation Details for slope transitions

- Note:
 The assumed pavement section matches the Engineer's Assessment.
 A pavement design will be completed for a future submittal.
- LEGEND:
- (O) Variable Depth Compacted Aggregate, No. 53
 - (Z) Sealing
 - (K1) Full Depth HMA, Consisting of:
 105 #/SYD, CC/QA-HMA, 4, 76, Surface, 5.5 mm on
 105 #/SYD, CC/QA-HMA, 4, 76, Intermediate, 5.5 mm on
 330 #/SYD, CC/QA-HMA, 4, 64, Base, 25.0 mm on
 250 #/SYD, CC/QA-HMA, 4, 76, Intermediate, 5.5 mm on
 330 #/SYD, CC/QA-HMA, 4, 76, Intermediate, 5.5 mm on
 330 #/SYD, CC/QA-HMA, 4, 64, Base, 19.0 mm on
 Subgrade Treatment Type I/A

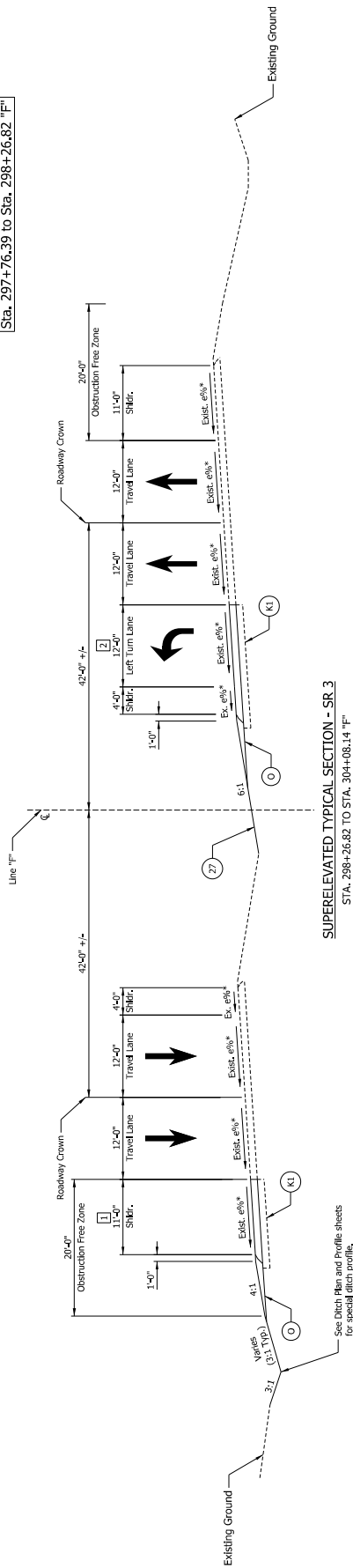
HORIZONTAL SCALE	BRIDGE FILE
VERTICAL SCALE	DISIGNATION
1" = 1'	190038
SURVEY BOOK	SHEETS
ELECTRONIC	6 of 54
CONTRACT	PROJECT
R-42375	190038

INDIANA DEPARTMENT OF TRANSPORTATION
TYPICAL CROSS SECTIONS LINE "F"

RECOMMENDED FOR APPROVAL	DESIGN ENGINEER	DATE
DESIGNED: EJM	10/12/2021	10/13/2021
CHECKED: EJR	10/26/2021	10/26/2021

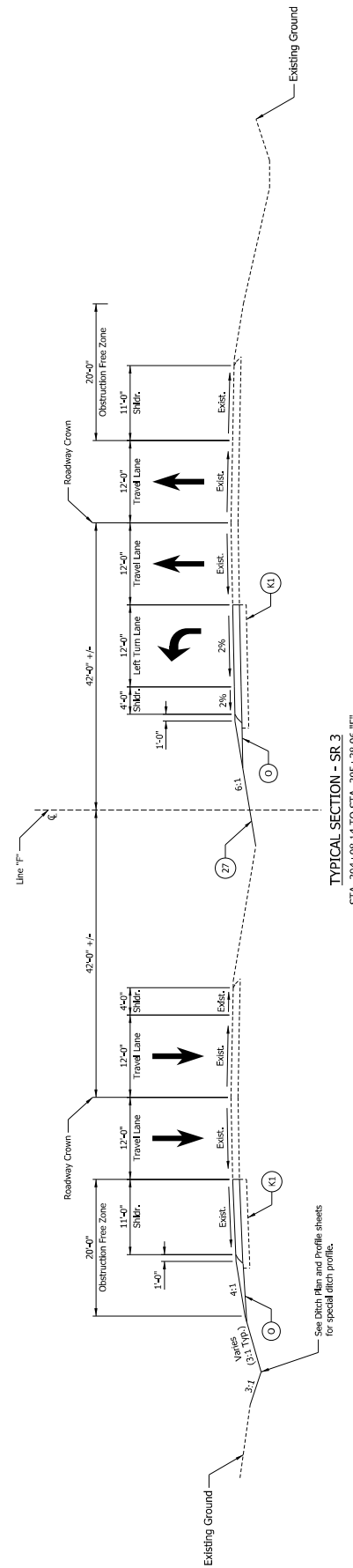
NOT FOR CONSTRUCTION

Paving Exception:
Sta. 297+76.39 to Sta. 298+26.82 "F"



SUPERELEVATED TYPICAL SECTION - SR 3
STA. 298+26.82 TO STA. 304+08.14 "F"

See Ditch Plan and Profile sheets for special ditch profile.



TYPICAL SECTION - SR 3
STA. 304+08.14 TO STA. 305+38.96 "F"

See Ditch Plan and Profile sheets for special ditch profile.

- *See Super-elevation Details for slope transitions
- 1 Full depth shoulder starts at Sta. 303+46.88 "F"
- 2 0'-0" from Sta. 298+26.82 to Sta. 298+30.79 "F"
- Varies from 0'-0" at Sta. 298+30.79 to 12'-0" at Sta. 299+30.16 "F"

LEGEND:

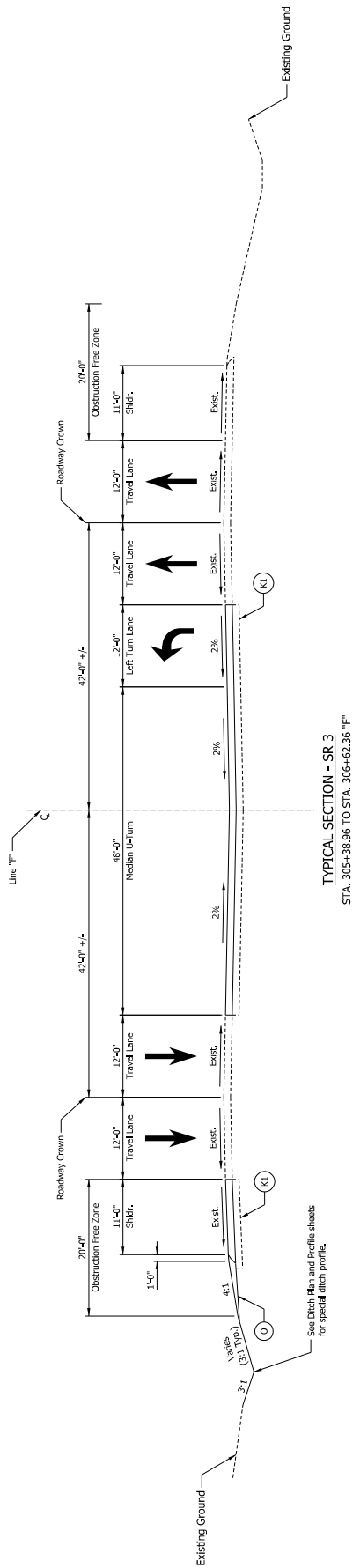
- (K1) Full Depth HMA, Consisting of:
 - 105 #/SYD, CC/QA-HMA, 4, 76, Surface, 3.5 mm on
 - 135 #/SYD, CC/QA-HMA, 4, 76, Intermediate, 3.5 mm on
 - 330 #/SYD, CC/QA-HMA, 4, 64, Base, 25.0 mm on
 - 250 #/SYD, CC/QA-HMA, 4, 76, Intermediate, 15.0 mm on
 - 330 #/SYD, CC/QA-HMA, 4, 76, Intermediate, 15.0 mm on
 - Subgrade Treatment Type IVA
- (27) Variable Depth Compacted Aggregate, No. 53
- (K1) Sealing

Note:
The assumed pavement section matches the Engineer's Assessment.
A pavement design will be completed for a future submittal.

RECOMMENDED FOR APPROVAL	DESIGN ENGINEER	DATE
DESIGNED: EJV	10/12/2021	10/13/2021
CHECKED: SR	10/26/2021	10/26/2021

INDIANA	BRIDGE FILE
DEPARTMENT OF TRANSPORTATION	DESIGNATION
TYPICAL CROSS SECTIONS	1900338
LINE "F"	SURVEY BOOK
	ELECTRONIC
	CONTRACT
	PROJECT
	7 of 54
	842375
	1900138

NOT FOR CONSTRUCTION



TYPICAL SECTION - SR 3
 STA. 305+38.96 TO STA. 306+62.36 FT

Note:
 The assumed pavement section matches the Engineer's Assessment.
 A pavement design will be completed for a future submittal.

- LEGEND:
- (O) Variable Depth Compacted Aggregate, No. 53
 - (Z) Sealing
 - (K1) Full Depth HMA, Consisting of:
 105 #/SYD, CC/QA-HMA, 4, 76; Surface, 3.5 mm on
 115 #/SYD, CC/QA-HMA, 4, 76; Intermediate OG, 15.0 mm on
 330 #/SYD, CC/QA-HMA, 4, 64; Base, 25.0 mm on
 250 #/SYD, CC/QA-HMA, 4, 76; Intermediate OG, 15.0 mm on
 330 #/SYD, CC/QA-HMA, 4, 64; Base, 19.0 mm on
 Subgrade Treatment Type IVA

FILE: I:\MCDM\130109\Drawings\Sheet\SR3_TypicalSection_U3.dgn

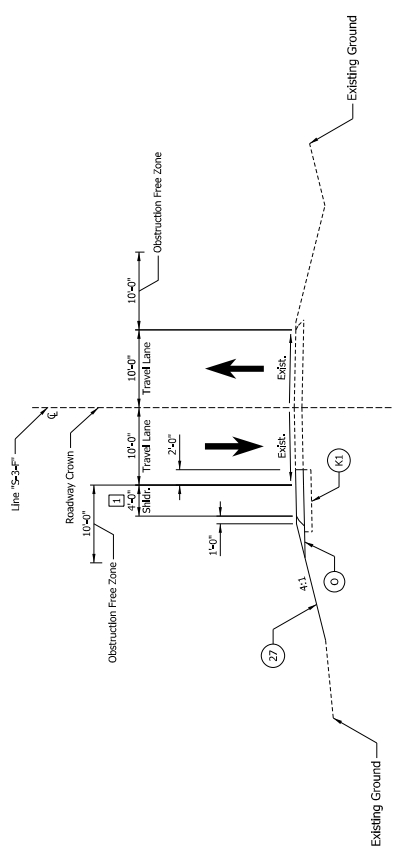
HORIZONTAL SCALE	BRIDGE FILE
VERTICAL SCALE	DESIGNATION
1" = 1'	1900138
SURVEY BOOK	SHEETS
ELECTRONIC	6 of 54
CONTRACT	PROJECT
R-42375	1900138

INDIANA
DEPARTMENT OF TRANSPORTATION
TYPICAL CROSS SECTIONS
LINE "F"

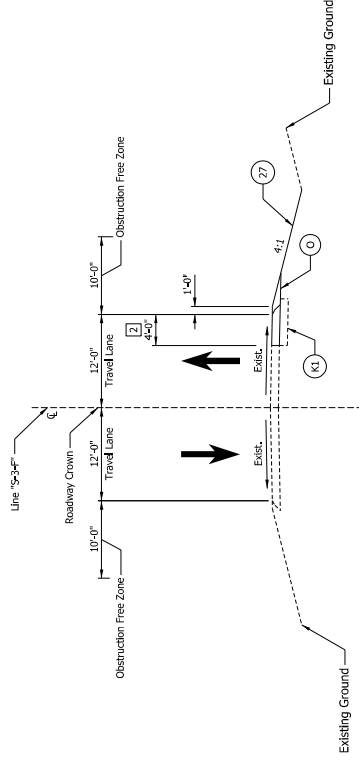
RECOMMENDED FOR APPROVAL	DESIGN ENGINEER	DATE
DESIGNED: EJV	10/12/2021	10/13/2021
CHECKED: EJV	10/26/2021	10/26/2021

NOT FOR CONSTRUCTION

B-16



TYPICAL SECTION - WAITS ROAD
STA. 47+00.00 TO STA. 50+00.00 "S-3-F"



TYPICAL SECTION - WAITS ROAD
STA. 50+00.00 TO STA. 55+00.00 "S-3-F"

- 1 Varies from 4'-0" at Sta. 47+81.39 to 9'-0" at Sta. 48+31.39 "S-3-F"
- 2 Varies from 8'-4" at Sta. 51+74.18 to 1'-0" at Sta. 52+39.80 "S-3-F"

Note:
The assumed pavement section matches the Engineer's Assessment.
A pavement design will be completed for a future submittal.

LEGEND:

- (K1) Full Depth HMA, Consisting of:
105 #/SYD, CC/QA-HMA, 4, 76; Surfbase, 3.5 mm on
230 #/SYD, CC/QA-HMA, 4, 64; Intermediate OG, 15.0 mm on
330 #/SYD, CC/QA-HMA, 4, 64; Base, 25.0 mm on
250 #/SYD, CC/QA-HMA, 4, 76; Intermediate OG, 15.0 mm on
330 #/SYD, CC/QA-HMA, 4, 64; Base, 19.0 mm on
Subgrade Treatment Type IVA
- (O) Variable Depth Compacted Aggregate, No. 53
- (27) Sealing

RECOMMENDED FOR APPROVAL	DESIGN ENGINEER	DATE
DESIGNED BY: EJV	10/12/2021	10/13/2021
CHECKED BY: EJV	10/26/2021	10/26/2021

INDIANA DEPARTMENT OF TRANSPORTATION	
TYPICAL CROSS SECTIONS LINE "S-3-F"	

HORIZONTAL SCALE	BRIDGE FILE
VERTICAL SCALE	DESIGNATION
1" = 1'	1900138
SURVEY BOOK	SHEETS
ELECTRONIC	9 of 54
CONTRACT	PROJECT
R42375	1900138

NOT FOR CONSTRUCTION

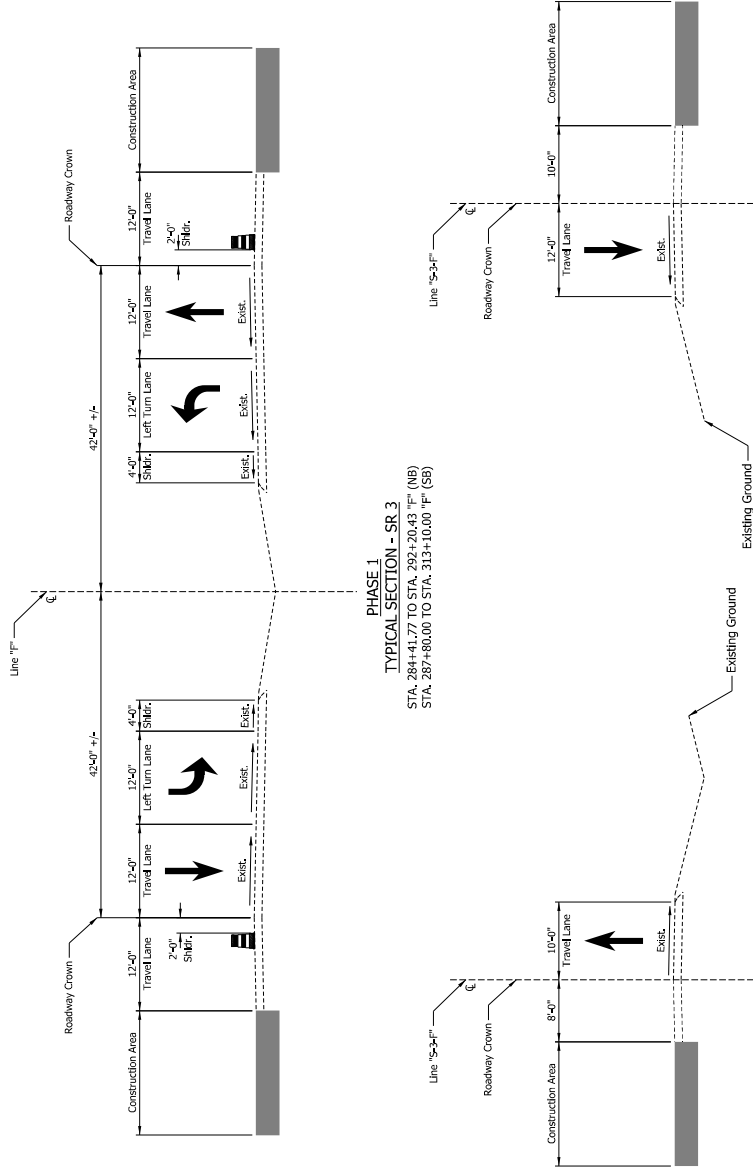
Maintenance of Traffic
Sequence of Operations
MOT Design Speed = 45 mph

Phase 1:

Move traffic to the inside lanes of existing SR 3, maintaining one (1) line in each direction. Close Waits Rd. and utilize the proposed detour. Construct the debris impeller reinforcement on the east side of the intersection with Waits Rd.

Phase 2:

Move traffic to the outside lanes of existing SR 3, maintaining one (1) line in each direction and keep Waits Rd. closed. Construct the median barrier on the east side of the intersection at the intersection with Waits Rd.



PHASE 1
TYPICAL SECTION - SR 3

STA. 284+41.77 TO STA. 292+20.43 "F" (NB)
STA. 287+80.00 TO STA. 313+10.00 "F" (SB)

PHASE 1
TYPICAL SECTION - WAITS ROAD
STA. 47+00.00 TO STA. 50+00.00 "S-3-F"

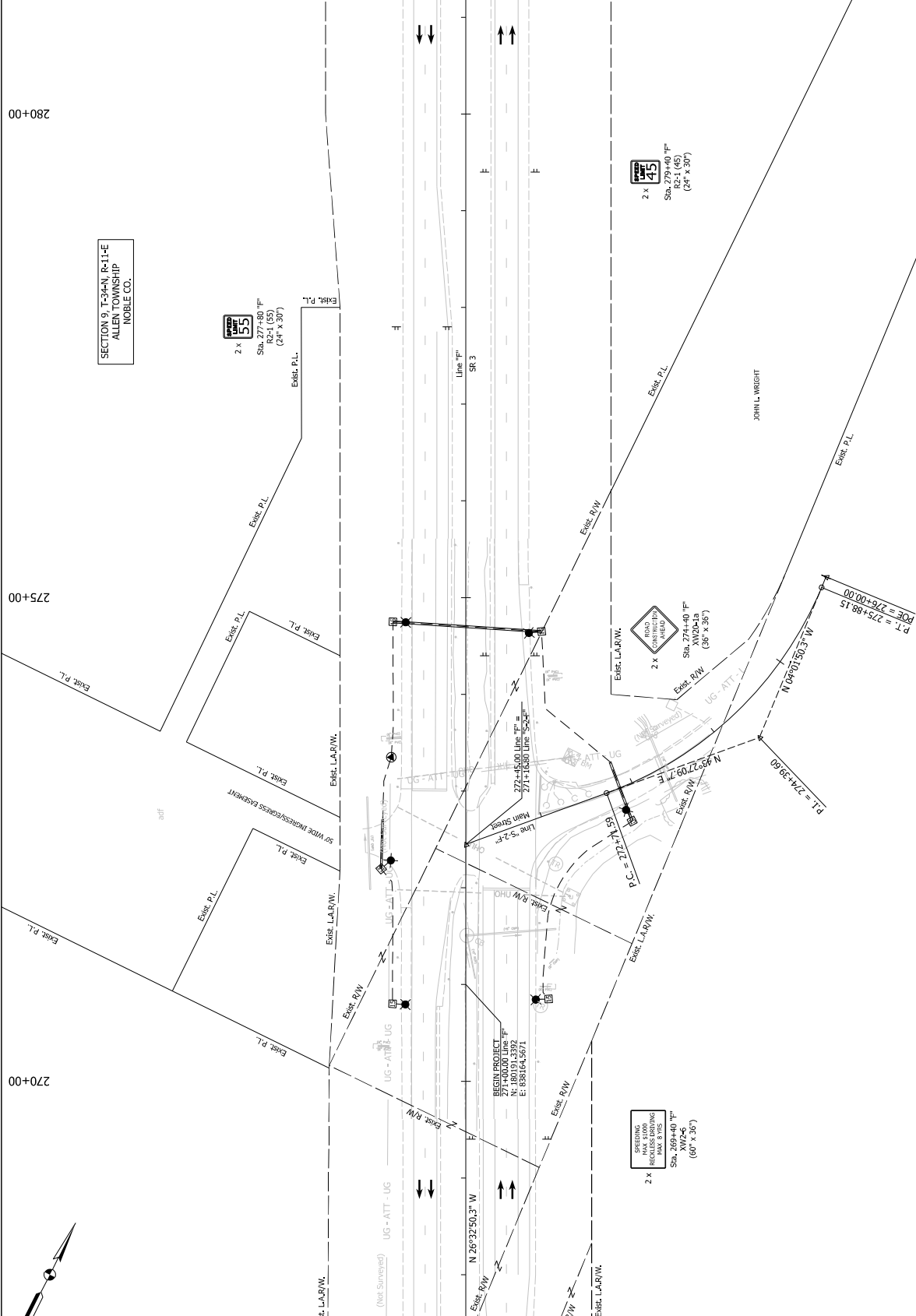
PHASE 1
TYPICAL SECTION - WAITS ROAD
STA. 50+00.00 TO STA. 55+00.00 "S-5-F"

ITEM DESCRIPTION	PHASE 1		PHASE 2		REMARKS
	UNIT	QUANTITY	UNIT	QUANTITY	
ROAD CLOSURE SIGN ASSEMBLY	EACH	2	4	4	
ROAD CLOSURE SIGN ASSEMBLY - REMOVABLE, 4 IN. SOLID, YELLOW	EACH	0	0	0	
TEMPORARY PAVEMENT MARKING, REMOVABLE, 4 IN. SOLID, WHITE	LFT	0	2,306	7,878	
DETOUR ROUTE MARKING ASSEMBLY	EACH	37	0	37	
CONSTRUCTION SIGN, A	EACH	10	12	16	26
CONSTRUCTION SIGN, B	EACH	0	12	12	12
ADDITIONAL CONSTRUCTION SIGN	DS	0	0	0	84
MAINTAINING TRAFFIC	LFT	0	248	248	248
BARRICADE III-B	LFT	44	0	0	44

MAINTENANCE OF TRAFFIC QUANTITIES

RECOMMENDED FOR APPROVAL	DESIGN ENGINEER	DATE	INDIANA		HORIZONTAL SCALE	BRIDGE FILE
			DEPARTMENT OF TRANSPORTATION			
DESIGNED: EJM	10/12/2021	10/13/2021	1/8" = 1'		1500138	
CHECKED: EJR	10/26/2021	10/26/2021	SURVEY BOOK		ELECTRONIC	SHEETS
			CONTRACT		844275	11 of 54
			PROJECT		1900138	

NOT FOR CONSTRUCTION

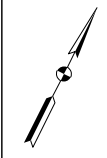


SECTION 9, T-34-N, R-1-E
ALLEN TOWNSHIP
NOBLE CO.

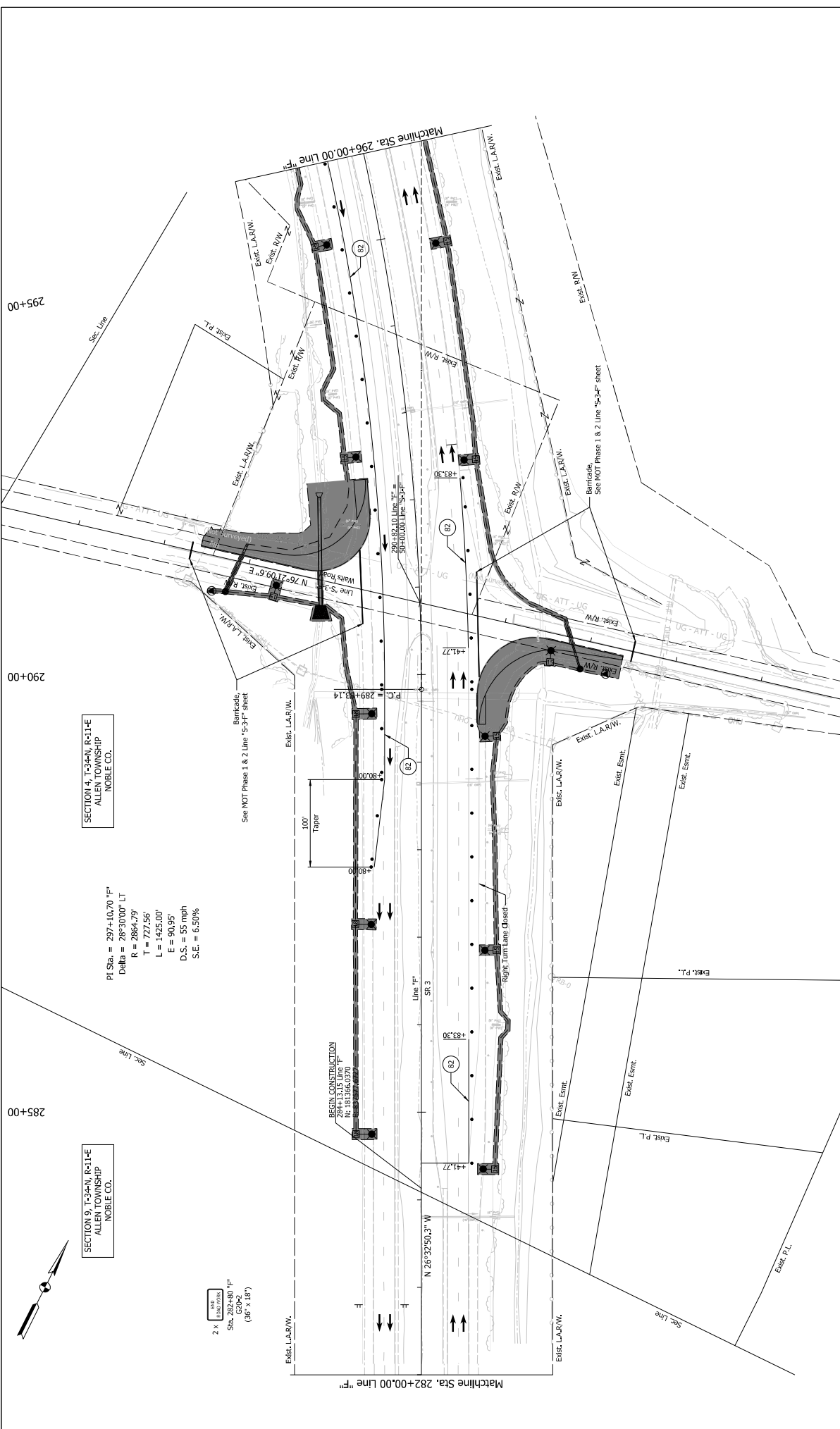
270+00

275+00

280+00



LEGEND: Construction Area Constructed in Previous Phase Direction of Traffic 50' Spaced Drums Construction Sign Flashing Arrow Sign	Temp. Pavement Marking, Removeable, 4", Solid, Yellow Temp. Pavement Marking, Removeable, 4", Solid, White Flashing Arrow Sign	NOT FOR CONSTRUCTION B-19	RECOMMENDED FOR APPROVAL DESIGNED: EJM CHECKED: GSR	DESIGN ENGINEER 10/12/2021 10/26/2021	DATE 10/13/2021 10/26/2021	INDIANA DEPARTMENT OF TRANSPORTATION MAINTENANCE OF TRAFFIC PHASE 1 LINE "F"	BRIDGE FILE DISIGNATION SHEETS PROJECT 1900338 12 1900138
			HORIZONTAL SCALE VERTICAL SCALE SURVEY BOOK ELECTRONIC CONTRACT 1" = 400' 1" = 40' 12 R-42375				



SECTION 9, T-34-N, R-11-E
ALLEN TOWNSHIP
NOBLE CO.

SECTION 4, T-34-N, R-11-E
ALLEN TOWNSHIP
NOBLE CO.

PI Sta. = 297+10.70 "F"
Delta = 285°30'00" LT
R = 2864.79'
T = 727.56'
L = 1425.00'
E = 90.95'
D.S. = 55 mph
S.E. = 6.50%

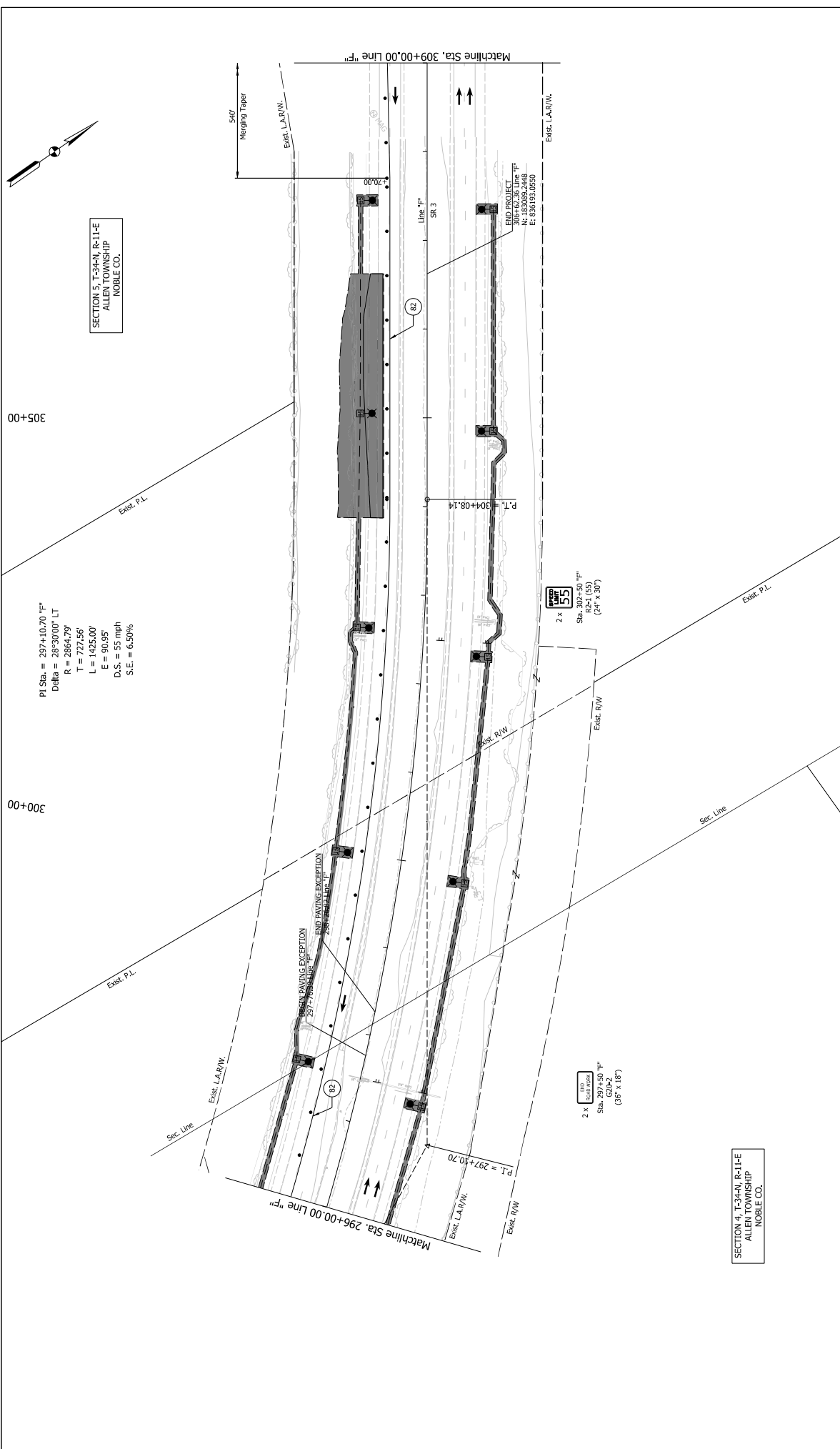
2 x
Sta. 282+80 "F"
GPO-2
(36' x 18')

Matchline Sta. 282+00.00 Line "F"

Matchline Sta. 296+00.00 Line "F"

RECOMMENDED FOR APPROVAL	DESIGN ENGINEER	DATE	INDIANA DEPARTMENT OF TRANSPORTATION	HORIZONTAL SCALE VERTICAL SCALE	BRIDGE FILE DESIGNATION
	DESIGNED: EJV	10/12/2021			
DESIGNED: EJV	10/12/2021	10/13/2021	MAINTENANCE OF TRAFFIC PHASE 1 LINE "F"	SURVEY BOOK ELECTRONIC	PROJECT
CHECKED: EJV	10/26/2021	10/26/2021			
NOT FOR CONSTRUCTION			CONTRACT R-42375		

- LEGEND:
- Construction Area
 - Constructed in Previous Phase
 - Direction of Traffic
 - 50' Spaced Drums
 - Construction Sign
 - Flashing Arrow Sign
 - Temp. Pavement Marking, Removeable, 4", Solid, Yellow
 - Temp. Pavement Marking, Removeable, 4", Solid, White



SECTION 5, T-34-N, R-11-E
ALLEN TOWNSHIP
NOBLE CO.

PI Sta. = 297+10.70 "F"
Delta = 2853000' LT
R = 2864.79'
T = 727.56'
L = 1425.00'
E = 90.95'
D.S. = 55 mph
S.E. = 6.50%

300+00

305+00

SECTION 4, T-34-N, R-11-E
ALLEN TOWNSHIP
NOBLE CO.

RECOMMENDED FOR APPROVAL		DESIGN ENGINEER		DATE	
DESIGNED BY	10/12/2021	DRAWN/EM		10/13/2021	
CHECKED BY	10/26/2021	CHEGERS, CSR		10/26/2021	

INDIANA DEPARTMENT OF TRANSPORTATION	
PROJECT	MAINTENANCE OF TRAFFIC PHASE 1
SHEETS	14 OF 54
CONTRACT	R-42375
PROJECT	1900138

BRIDGE FILE	
HORIZONTAL SCALE	N/A
VERTICAL SCALE	N/A
SURVEY BOOK	ELECTRONIC
DISIGNATION	1900138

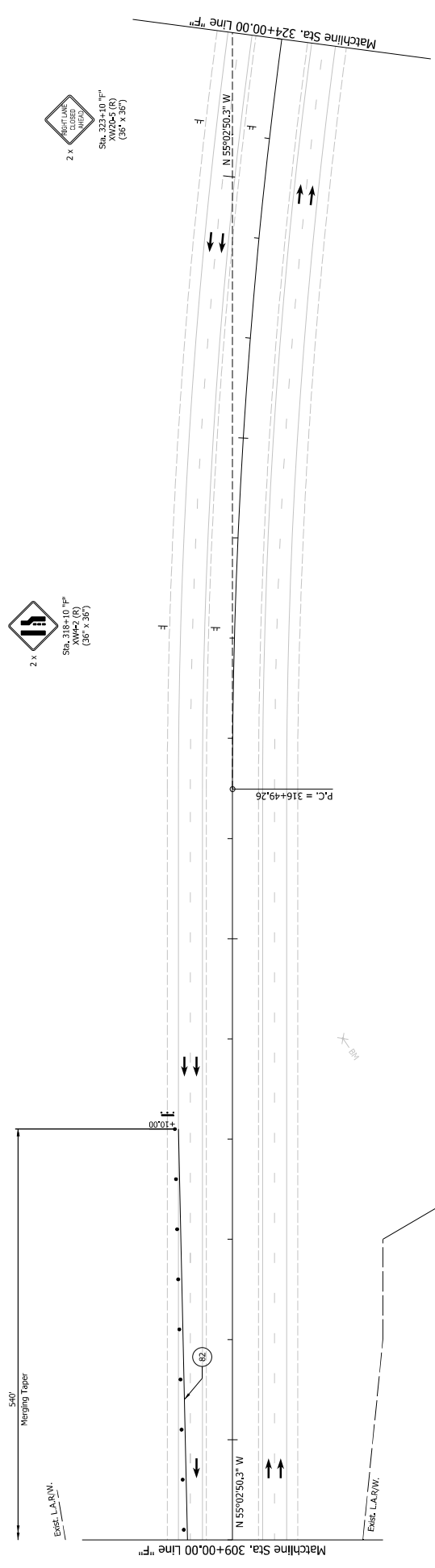
NOT FOR CONSTRUCTION

B-21

- LEGEND:**
- Construction Area
 - Constructed in Previous Phase
 - Direction of Traffic
 - 50' Spaced Drums
 - Construction Sign
 - Flashing Arrow Sign
 - Temp. Pavement Marking, Removeable, 4", Solid, Yellow
 - Temp. Pavement Marking, Removeable, 4", Solid, White

FILE: I:\MCD\190789648\Draws\Sheet\02_S&C\07_B-21.dwg

310+00 315+00 320+00



2 x
 Sta. 318+10 "F"
 XWP-2 (R)
 (36" x 36")

2 x
 Sta. 323+10 "F"
 XWP-5 (R)
 (36" x 36")

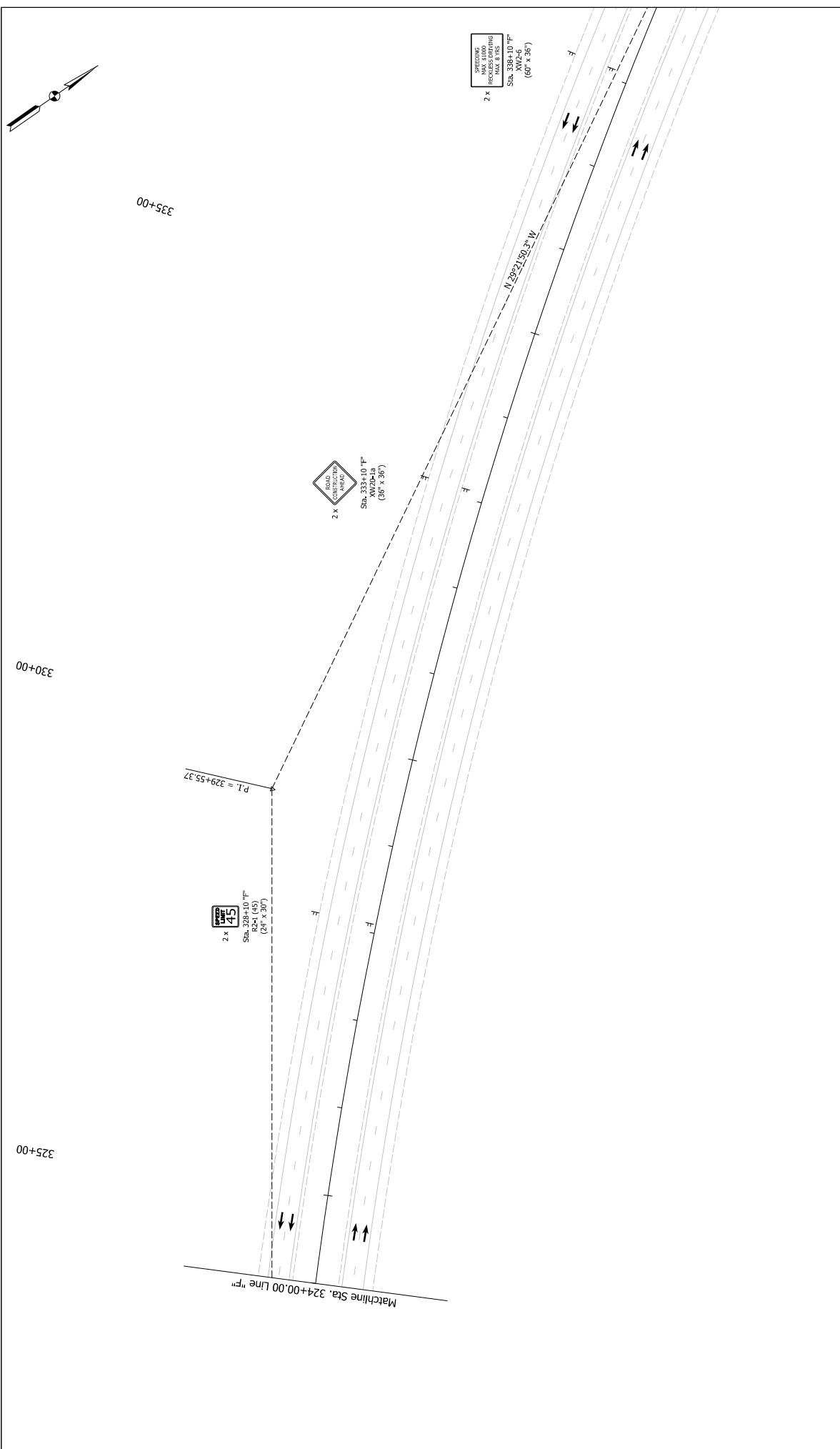
LEGEND:		Construction Area		50' Spaced Drums		Temp. Pavement Marking, Removeable, 4", Solid, Yellow
		Constructed in Previous Phase		Construction Sign		Temp. Pavement Marking, Removeable, 4", Solid, White
		Direction of Traffic		Flashing Arrow Sign		

RECOMMENDED FOR APPROVAL	DESIGN ENGINEER	DATE
DESIGNED: EJV	10/12/2021	10/13/2021
CHECKED: GSR	10/26/2021	10/26/2021

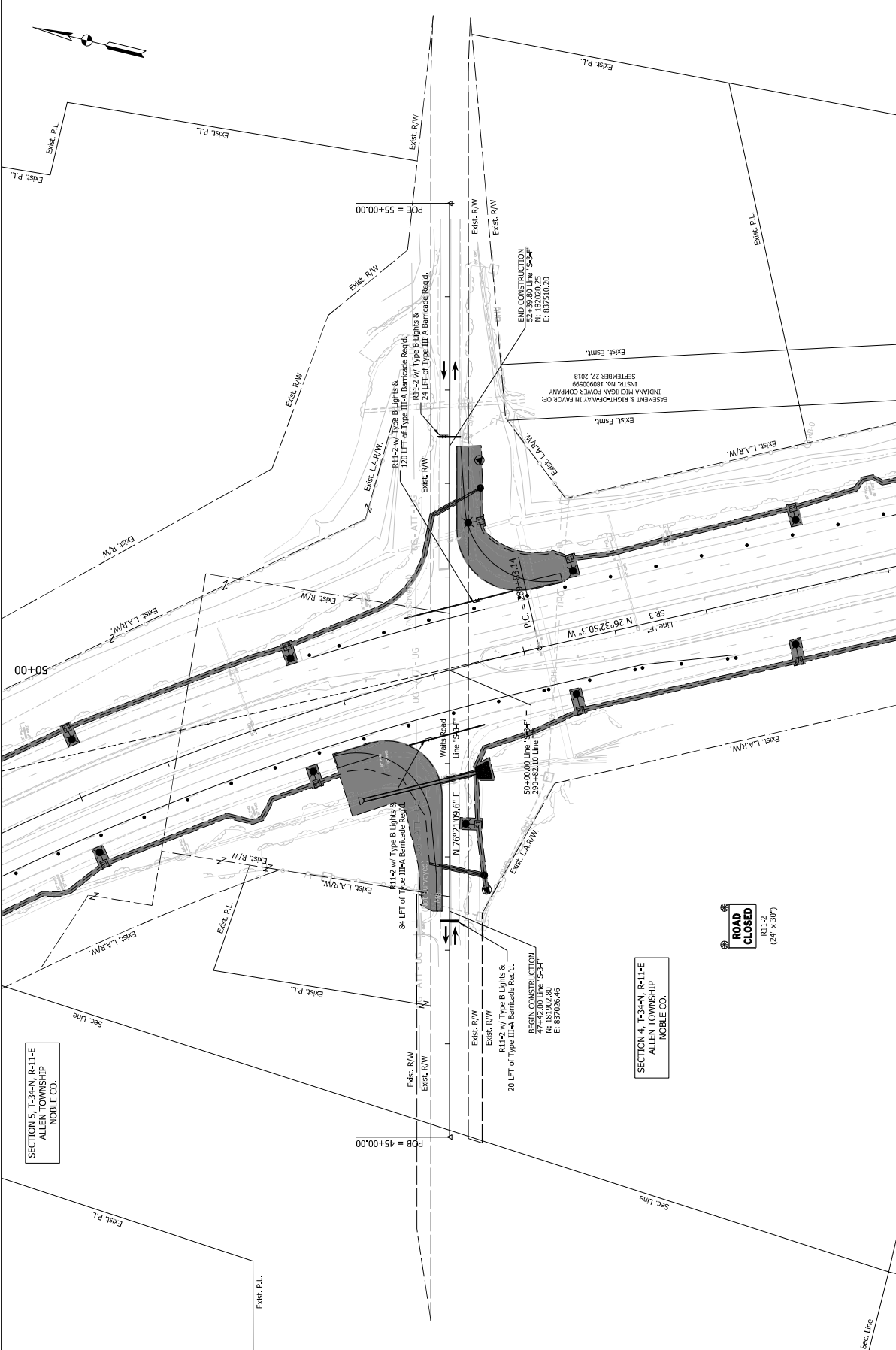
INDIANA DEPARTMENT OF TRANSPORTATION	HORIZONTAL SCALE	BRIDGE FILE
MAINTENANCE OF TRAFFIC PHASE 1	VERTICAL SCALE	DISIGNATION
LINE "F"	N/A	1900138
	SURVEY BOOK	SHEETS
	ELECTRONIC	15 of 54
	CONTRACT	PROJECT
	R-42375	1900138

NOT FOR CONSTRUCTION

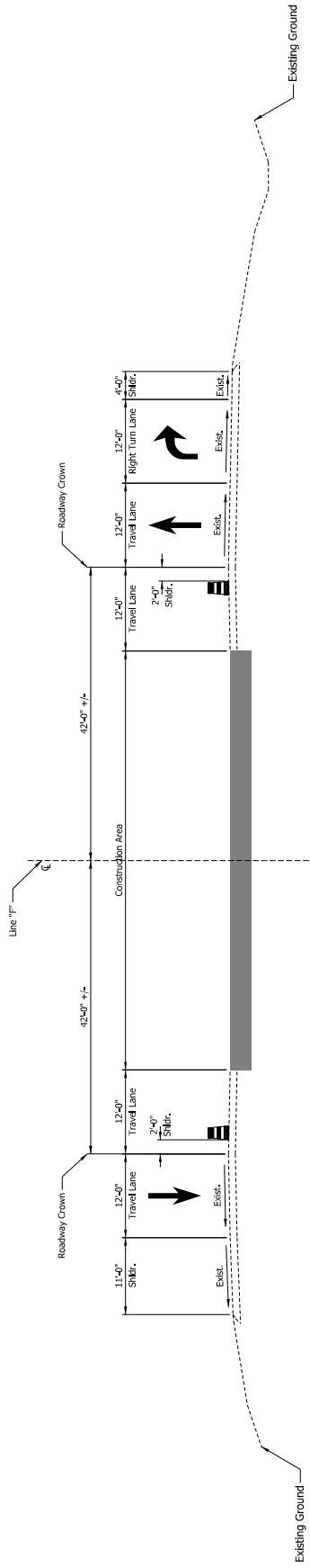
B-22



LEGEND: Construction Area Constructed in Previous Phase Direction of Traffic 50' Spaced Drums Construction Sign Flashing Arrow Sign	(80) Temp. Pavement Marking, Removeable, 4", Solid, Yellow (82) Temp. Pavement Marking, Removeable, 4", Solid, White	NOT FOR CONSTRUCTION	RECOMMENDED FOR APPROVAL	DESIGN ENGINEER	DATE	INDIANA DEPARTMENT OF TRANSPORTATION MAINTENANCE OF TRAFFIC PHASE 1 LINE "F"	HORIZONTAL SCALE VERTICAL SCALE SURVEY BOOK ELECTRONIC CONTRACT	BRIDGE FILE DESIGNATION SHEETS PROJECT
			DESIGNED: ELV	10/12/2021	(NAME) ELV			
			CHECKED: GSR	10/26/2021	(NAME) GSR	10/26/2021	4-42775	1900138



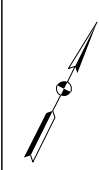
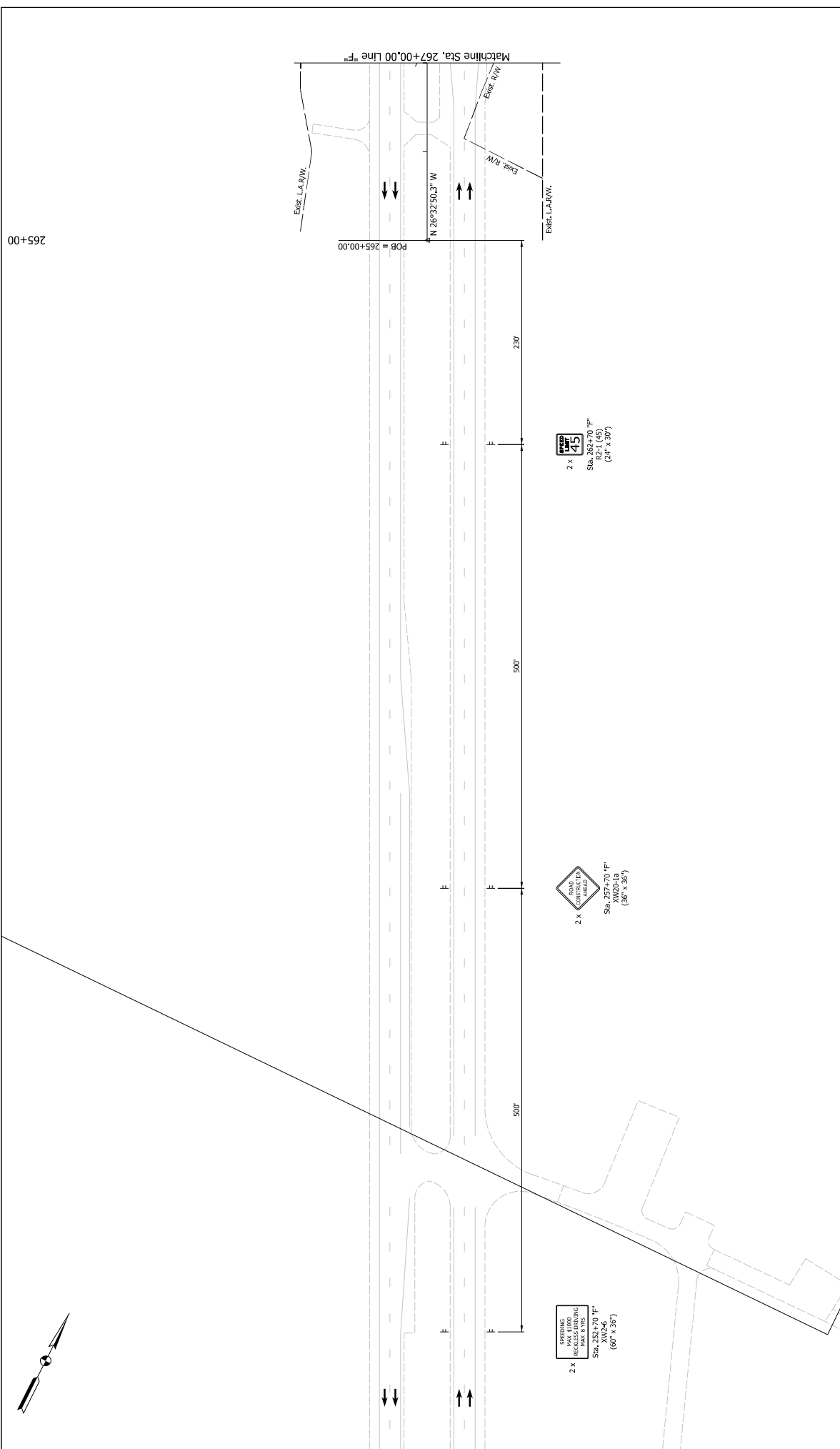
LEGEND: Construction Area Constructed in Previous Phase Direction of Traffic 50' Spaced Drums Construction Sign Flashing Arrow Sign		Temp. Pavement Marking, Removable, 4", Solid, Yellow Temp. Pavement Marking, Removable, 4", Solid, White Flashing Arrow Sign	
RECOMMENDED FOR APPROVAL DESIGNED BY: EJV CHECKED BY: GSR	DESIGN ENGINEER: [Name] DATE: 10/13/2021	INDIANA DEPARTMENT OF TRANSPORTATION MAINTENANCE OF TRAFFIC PHASE 1 & 2 LINE "S-3-F"	
NOT FOR CONSTRUCTION		BRIDGE FILE: 1900138 DESIGNATION: 1900138 SHEETS: 17 of 54 PROJECT: 1900138	



PHASE 2
 TYPICAL SECTION - SR 3
 STA. 277+70.00 TO STA. 308+50.00 "F" (NB)
 STA. 287+00.00 TO STA. 312+90.00 "F" (SB)

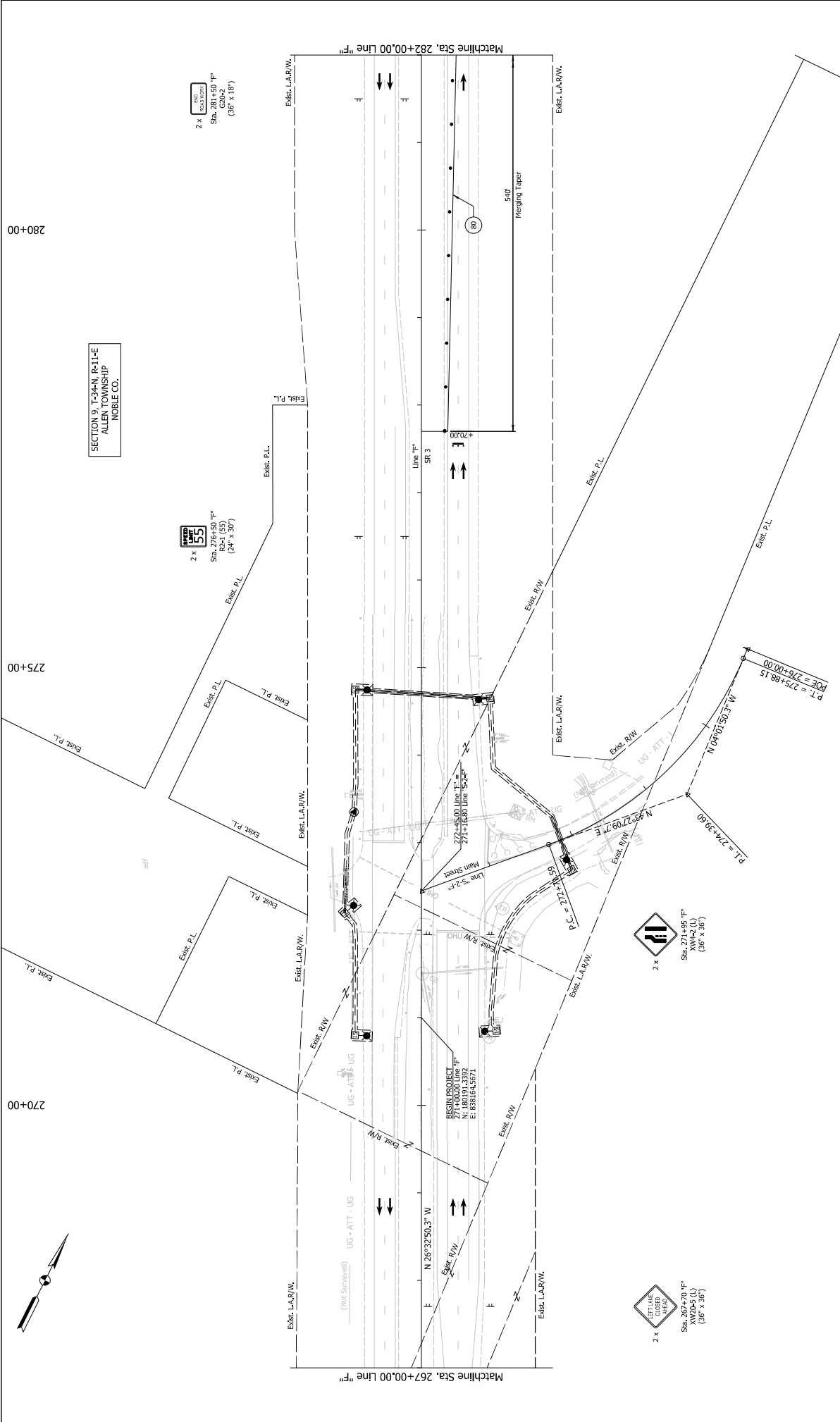
NOT FOR CONSTRUCTION	RECOMMENDED FOR APPROVAL	DESIGN ENGINEER	DATE	INDIANA DEPARTMENT OF TRANSPORTATION	HORIZONTAL SCALE	BRIDGE FILE
	DESIGNED: ELM	10/12/2021	10/13/2021		VERTICAL SCALE 1/8" = 1'	DESIGNATION 1500338
	CHECKED: ESR	10/26/2021	10/26/2021	MOT TYPICAL SECTION PHASE 2 LINE "F"	SURVEY BOOK ELECTRONIC	SHEETS 16 of 54
					CONTRACT R-42375	PROJECT 1500338

265+00



LEGEND: Construction Area Constructed in Previous Phase Direction of Traffic 50' Spaced Drums Construction Sign Direction of Traffic Flashing Arrow Sign	Temp. Pavement Marking, Removeable, 4", Solid, Yellow Temp. Pavement Marking, Removeable, 4", Solid, White	RECOMMENDED FOR APPROVAL DESIGNED: EJM CHECKED: EJR	DESIGN ENGINEER 10/13/2021 10/26/2021	DATE 10/13/2021 10/26/2021	INDIANA DEPARTMENT OF TRANSPORTATION MAINTENANCE OF TRAFFIC PHASE 2 LINE "F"	HORIZONTAL SCALE VERTICAL SCALE SURVEY BOOK ELECTRONIC CONTRACT	BRIDGE FILE DESIGNATION SHEETS PROJECT
	Construction Area Constructed in Previous Phase Direction of Traffic 50' Spaced Drums Construction Sign Direction of Traffic Flashing Arrow Sign	Temp. Pavement Marking, Removeable, 4", Solid, Yellow Temp. Pavement Marking, Removeable, 4", Solid, White	DESIGNED: EJM CHECKED: EJR	DESIGN ENGINEER 10/13/2021 10/26/2021		DATE 10/13/2021 10/26/2021	INDIANA DEPARTMENT OF TRANSPORTATION MAINTENANCE OF TRAFFIC PHASE 2 LINE "F"

NOT FOR CONSTRUCTION
 B-26



SECTION 9, T-34-N, R-1-E
ALLEN TOWNSHIP
NOBLE CO.

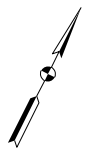
2 x
Sta. 274+95.70' F"
SR 3 (SR)
(36' x 36')

2 x
Sta. 282+00.00' F"
SR 3 (SR)
(36' x 36')

270+00

275+00

280+00



LEGEND: Construction Area Constructed in Previous Phase Direction of Traffic 50' Spaced Drums Construction Sign Flashing Arrow Sign	NOT FOR CONSTRUCTION B-27	INDIANA DEPARTMENT OF TRANSPORTATION MAINTENANCE OF TRAFFIC PHASE 2 LINE "F"	HORIZONTAL SCALE VERTICAL SCALE SURVEY BOOK ELECTRONIC CONTRACT PROJECT	BRIDGE FILE DESIGNATION SHEETS OF PRODUCT
		RECOMMENDED FOR APPROVAL DESIGNED: ELM CHECKED: GJR	DESIGN ENGINEERS DATE 10/13/2021 10/26/2021	(DRAWN/TEAM) (CHECKED/ISR)

2 x
Sta. 271+95.70' F"
XW4-2 (L)
(36' x 36')

2 x
Sta. 271+95.70' F"
XW4-2 (L)
(36' x 36')

2 x
P.T. = 275+88.15
R.O.E. = 276+00.00
N 04°30'15.31" W

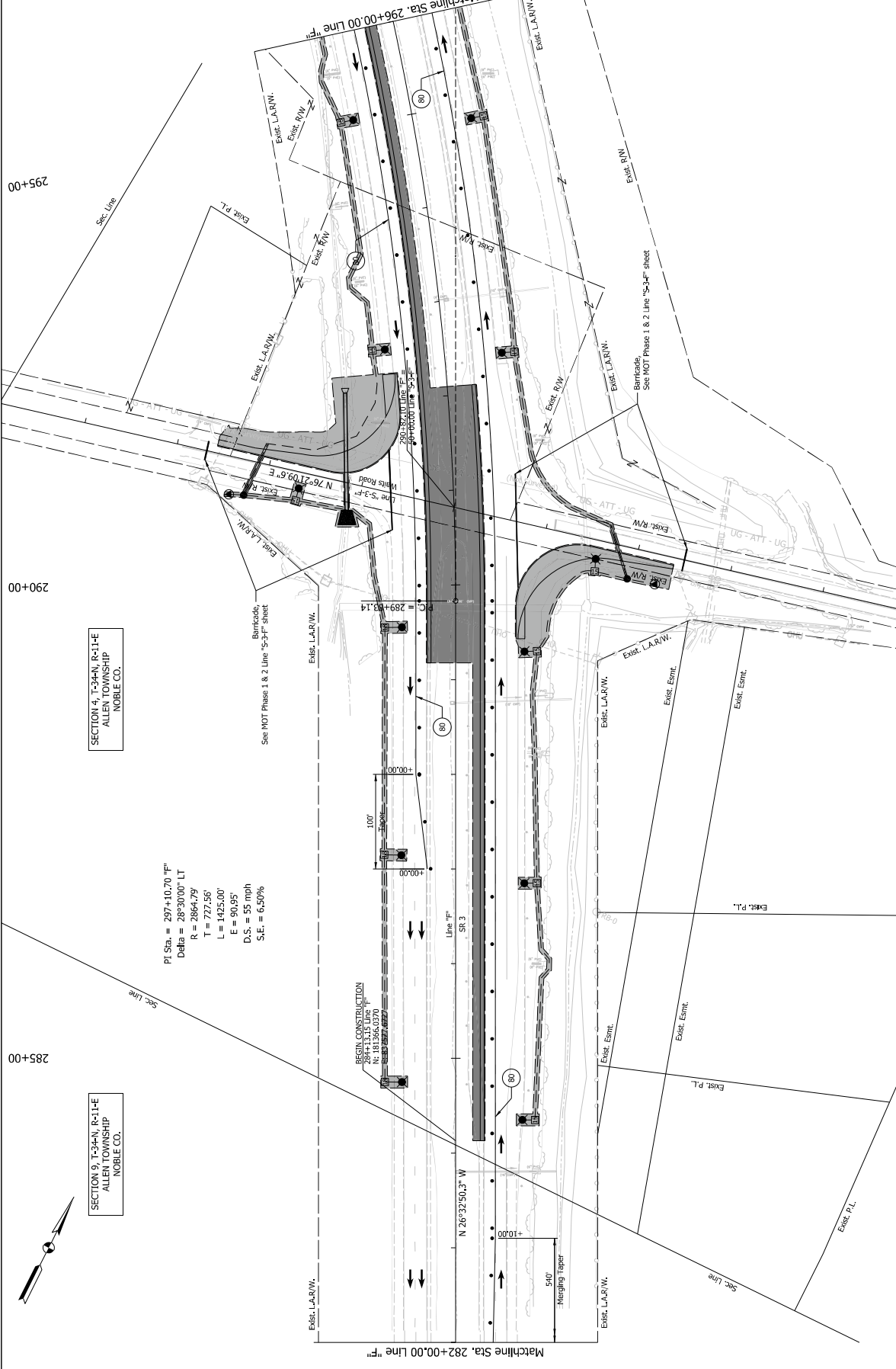
2 x
P.C. = 272+12.50
N 93°27'09.7" E

BEGIN PROJECT
N: 180191.4392
E: 688164.2671
271+00.00 Line "F"
272+45.00 Line "F"
271+16.80 Line "F"

Matchline Sta. 282+00.00 Line "F"

Matchline Sta. 267+00.00 Line "F"

FILE: I:\MORTON\19709403\Draws\Sheets\B03_S01_S02_S03_S04_S05_S06_S07_S08_S09_S10_S11_S12_S13_S14_S15_S16_S17_S18_S19_S20_S21_S22_S23_S24_S25_S26_S27_S28_S29_S30_S31_S32_S33_S34_S35_S36_S37_S38_S39_S40_S41_S42_S43_S44_S45_S46_S47_S48_S49_S50_S51_S52_S53_S54_S55_S56_S57_S58_S59_S60_S61_S62_S63_S64_S65_S66_S67_S68_S69_S70_S71_S72_S73_S74_S75_S76_S77_S78_S79_S80_S81_S82_S83_S84_S85_S86_S87_S88_S89_S90_S91_S92_S93_S94_S95_S96_S97_S98_S99_S100



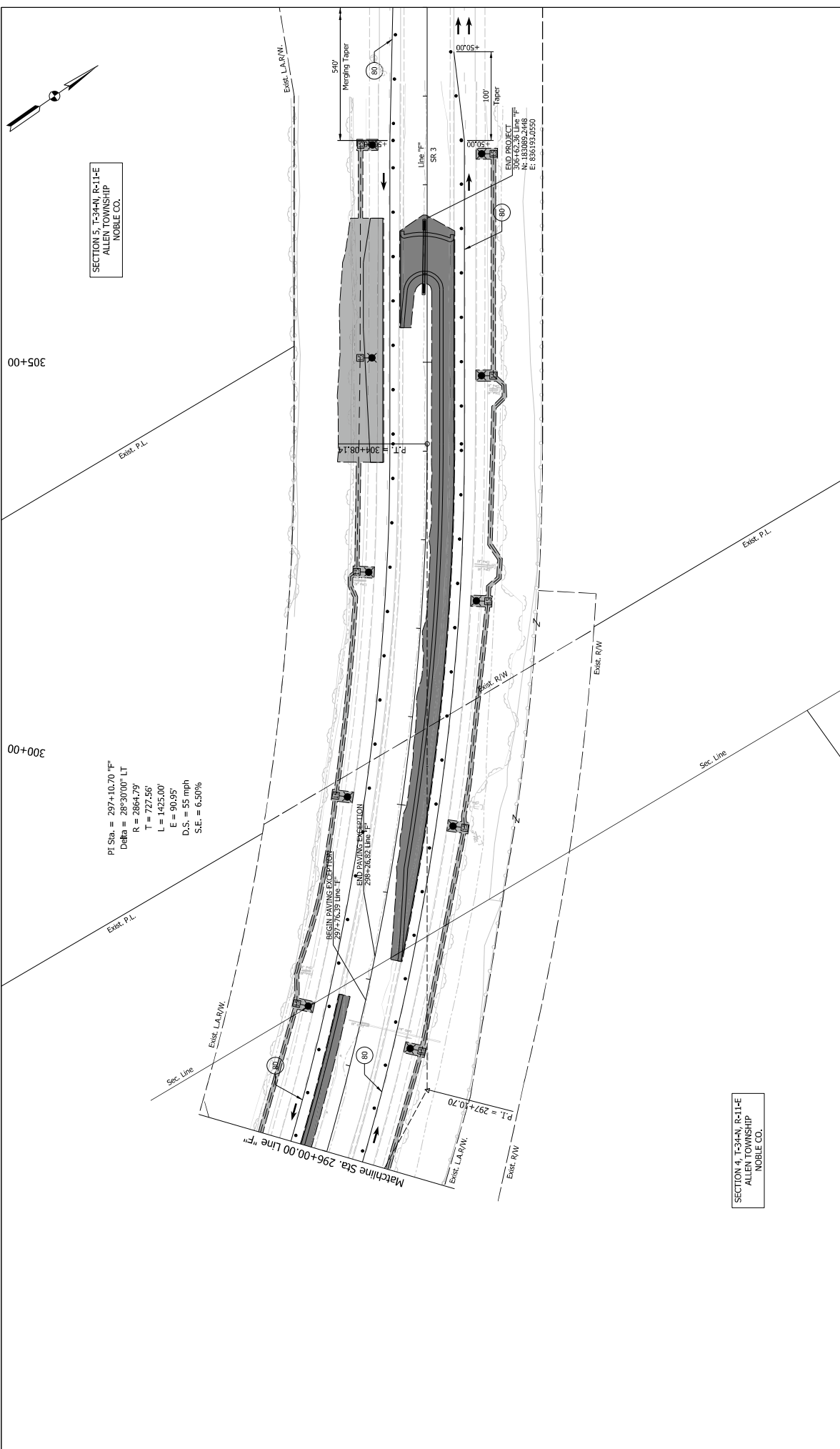
SECTION 9, T-34-N, R-1-E
ALLEN TOWNSHIP
NOBLE CO.

SECTION 4, T-34-N, R-1-E
ALLEN TOWNSHIP
NOBLE CO.

PI Sta. = 297+10.70 1F"
Delta = 2892000" LT
R = 2864239
T = 727.56'
L = 1425.00'
E = 90.95'
D.S. = 55 mph
S.E. = 6.50%

BEGIN CONSTRUCTION
284+13.15 Line 1F
285+00.00 Line 2F
285+00.00 Line 3F

LEGEND:	Construction Area	• 50' Spaced Drums	Temp. Pavement Marking, Removeable, 4", Solid, Yellow
	Constructed in Previous Phase	F - Construction Sign	Temp. Pavement Marking, Removeable, 4", Solid, White
	Direction of Traffic	Flashing Arrow Sign	
NOT FOR CONSTRUCTION			
RECOMMENDED FOR APPROVAL	DESIGN ENGINEER	DATE	INDIANA DEPARTMENT OF TRANSPORTATION
DESIGNED: EJV	10/12/2021	10/13/2021	MAINTENANCE OF TRAFFIC PHASE 2 LINE "1F"
CHECKED: GSR	10/26/2021	10/26/2021	
BRIDGE FILE HORIZONTAL SCALE VERTICAL SCALE SURVEY BOOK ELECTRONIC CONTRACT PROJECT 1900138 1900138 N/A 21 of 54 R-42375 1900138			

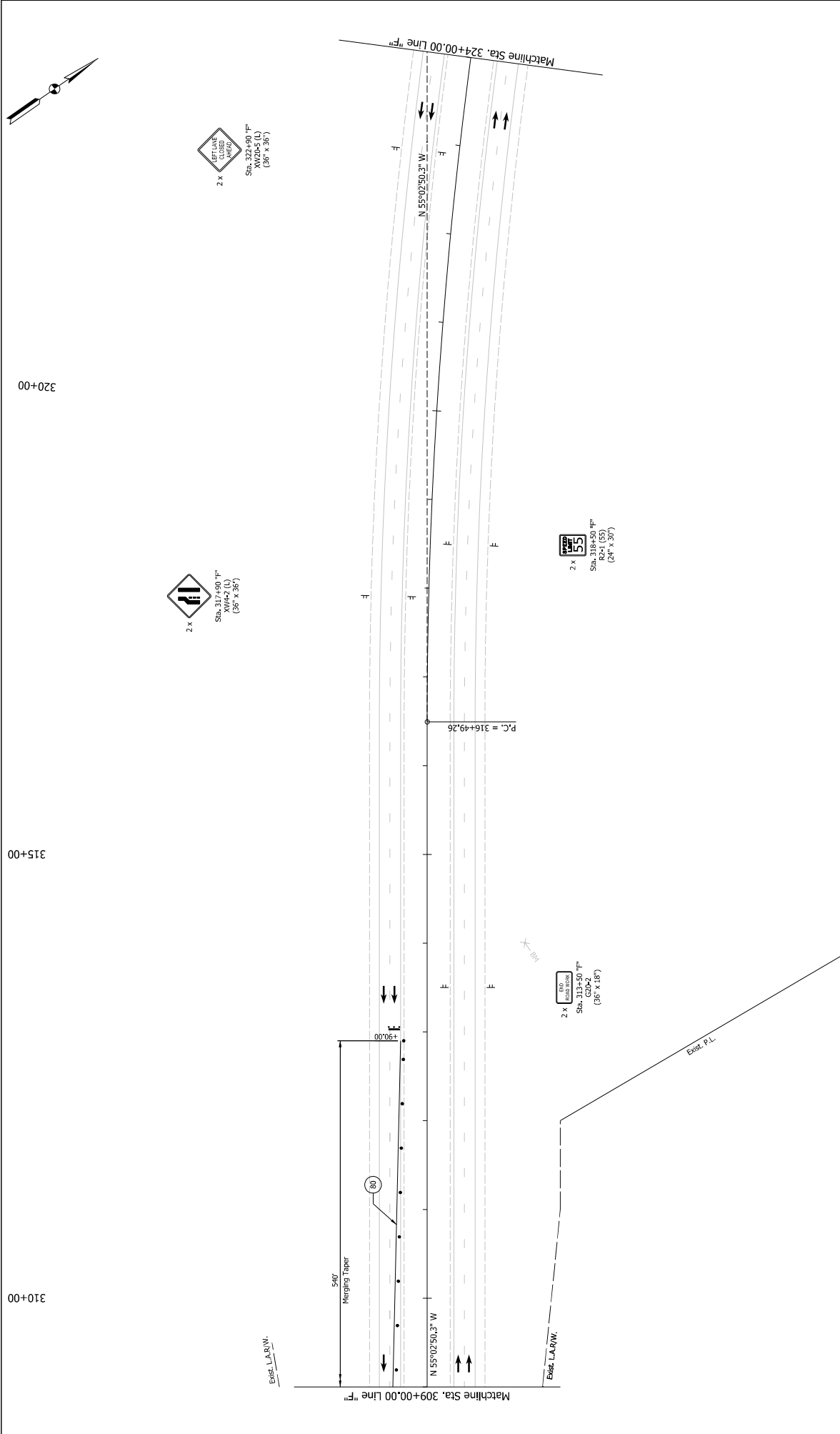


SECTION 5, T-34-N, R-11-E
ALLEN TOWNSHIP
NOBLE CO.

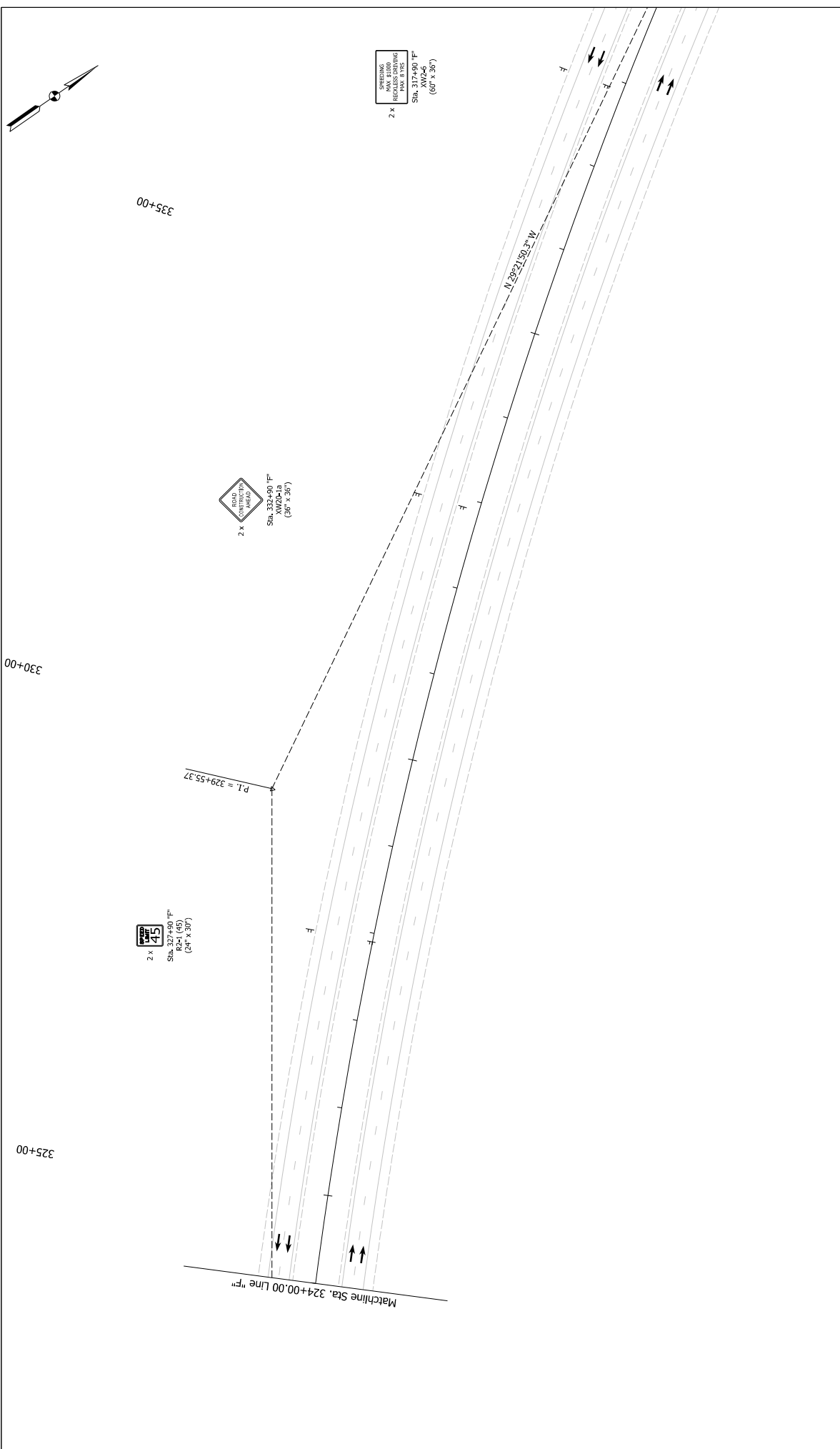
PI Sta. = 297+10.70 "F"
Delta = 28°30'00" LT
R = 2864.79
T = 727.56
L = 1425.00
E = 90.95'
D.S. = 55 mph
S.E. = 6.50%

SECTION 4, T-34-N, R-11-E
ALLEN TOWNSHIP
NOBLE CO.

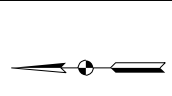
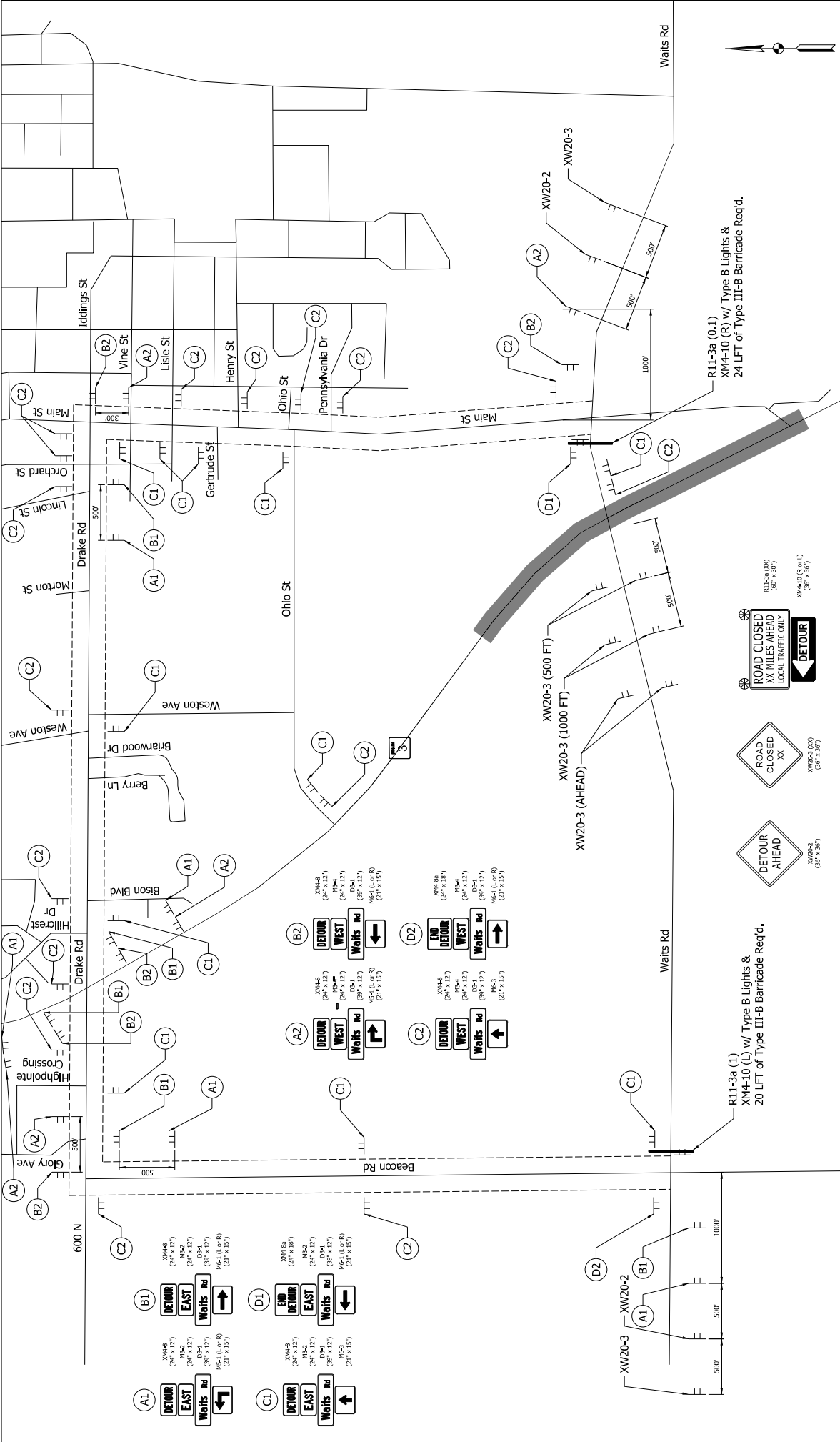
LEGEND:	Construction Area	• - 50' Spaced Drums	Temp. Pavement Marking, Removeable, 4", Solid, Yellow
	Constructed in Previous Phase	F - Construction Sign	Temp. Pavement Marking, Removeable, 4", Solid, White
	Direction of Traffic	→ - Flashing Arrow Sign	
NOT FOR CONSTRUCTION			
RECOMMENDED FOR APPROVAL	DESIGN ENGINEER	DATE	
DESIGNED: EJV	10/12/2021	10/13/2021	
CHECKED: GSR	10/26/2021	10/26/2021	
INDIANA DEPARTMENT OF TRANSPORTATION		BRIDGE FILE	
MAINTENANCE OF TRAFFIC PHASE 2		DISIGNATION	
		1900138	
		SHEETS	
		22 of 54	
		PROJECT	
		1900138	
		CONTRACT	
		R-42375	



LEGEND:	Construction Area	• - 50' Spaced Drums	(80) Temp. Pavement Marking, Removeable, 4", Solid, Yellow																			
	Constructed in Previous Phase	F - Construction Sign	(82) Temp. Pavement Marking, Removeable, 4", Solid, White																			
	Direction of Traffic	→ - Flashing Arrow Sign																				
<table border="1"> <tr> <td>HORIZONTAL SCALE</td> <td>BRIDGE FILE</td> <td rowspan="2">INDIANA DEPARTMENT OF TRANSPORTATION</td> </tr> <tr> <td>VERTICAL SCALE</td> <td>DISIGNATION</td> </tr> <tr> <td>SURVEY BOOK</td> <td>1903138</td> <td rowspan="2">MAINTENANCE OF TRAFFIC PHASE 2 LINE "F"</td> </tr> <tr> <td>ELECTRONIC</td> <td></td> </tr> <tr> <td>CONTRACT</td> <td>844275</td> <td></td> </tr> <tr> <td>SHEETS</td> <td>23 of 54</td> <td></td> </tr> <tr> <td>PROJECT</td> <td>1900138</td> <td></td> </tr> </table>				HORIZONTAL SCALE	BRIDGE FILE	INDIANA DEPARTMENT OF TRANSPORTATION	VERTICAL SCALE	DISIGNATION	SURVEY BOOK	1903138	MAINTENANCE OF TRAFFIC PHASE 2 LINE "F"	ELECTRONIC		CONTRACT	844275		SHEETS	23 of 54		PROJECT	1900138	
HORIZONTAL SCALE	BRIDGE FILE	INDIANA DEPARTMENT OF TRANSPORTATION																				
VERTICAL SCALE	DISIGNATION																					
SURVEY BOOK	1903138	MAINTENANCE OF TRAFFIC PHASE 2 LINE "F"																				
ELECTRONIC																						
CONTRACT	844275																					
SHEETS	23 of 54																					
PROJECT	1900138																					
<table border="1"> <tr> <td>RECOMMENDED FOR APPROVAL</td> <td>DESIGN ENGINEER</td> <td>DATE</td> </tr> <tr> <td>DESIGNED: EJV</td> <td>10/12/2021 (P/ANW/ELM)</td> <td>10/13/2021</td> </tr> <tr> <td>CHECKED: GSR</td> <td>10/26/2021 (P/EGAS/ GSR)</td> <td>10/26/2021</td> </tr> </table>				RECOMMENDED FOR APPROVAL	DESIGN ENGINEER	DATE	DESIGNED: EJV	10/12/2021 (P/ANW/ELM)	10/13/2021	CHECKED: GSR	10/26/2021 (P/EGAS/ GSR)	10/26/2021										
RECOMMENDED FOR APPROVAL	DESIGN ENGINEER	DATE																				
DESIGNED: EJV	10/12/2021 (P/ANW/ELM)	10/13/2021																				
CHECKED: GSR	10/26/2021 (P/EGAS/ GSR)	10/26/2021																				
NOT FOR CONSTRUCTION																						
B-30																						



LEGEND: Construction Area Constructed in Previous Phase Direction of Traffic 50' Spaced Drums Construction Sign Flashing Arrow Sign	(80) Temp. Pavement Marking, Removeable, 4", Solid, Yellow (82) Temp. Pavement Marking, Removeable, 4", Solid, White	NOT FOR CONSTRUCTION	RECOMMENDED FOR APPROVAL: _____ DATE: _____ DESIGNED: EJV 10/12/2021 (KAWIN/EJV) 10/13/2021 CHECKED: EJV 10/26/2021 (PEGASUS/EJV) 10/26/2021	INDIANA DEPARTMENT OF TRANSPORTATION MAINTENANCE OF TRAFFIC PHASE 2 LINE "F"	HORIZONTAL SCALE: _____ BRIDGE FILE: _____ VERTICAL SCALE: N/A DESIGNATION: 1500138 SURVEY BOOK: _____ SHEETS: _____ ELECTRONIC: _____ OF 54 CONTRACT: R-42375 PROJECT: 1500138
			B-31 File: I:\MGT\1500138\Draws\Sheet\05_CAD\05_CAD_01.dwg Pht: 2/25/2022 11:09:44 AM		



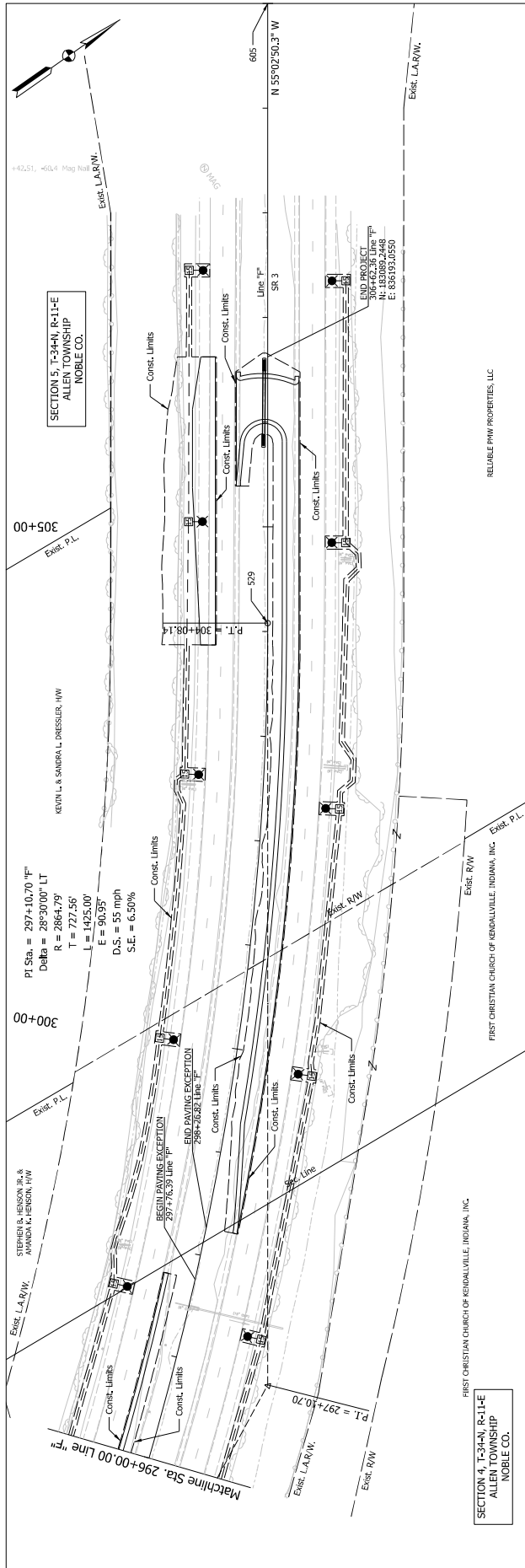
HORIZONTAL SCALE	BRIDGE FILE
VERTICAL SCALE	DESIGNATION
N/A	1500138
SURVEY BOOK	SHEETS
ELECTRONIC	25 of 54
CONTRACT	PROJECT
R-42375	1500138

INDIANA DEPARTMENT OF TRANSPORTATION
MAINTENANCE OF TRAFFIC DETOUR

RECOMMENDED FOR APPROVAL	DESIGN ENGINEER	DATE
DESIGNED: EJV	10/12/2021	10/13/2021
CHECKED: EJR	10/26/2021	10/26/2021

NOT FOR CONSTRUCTION

<p>ROAD CLOSED XX MILES AHEAD LOCAL TRAFFIC ONLY</p> <p>DETOUR</p> <p>DETOUR AHEAD</p> <p>ROAD CLOSED XX</p>	<p>R11-3a (0.1) XM4-10 (R) w/ Type B Lights & 24 LFT of Type III-B Barricade Req'd.</p> <p>XW20-3 (500 FT)</p> <p>XW20-3 (1000 FT)</p> <p>XW20-3 (AHEAD)</p> <p>R11-3a (1) XM4-10 (L) w/ Type B Lights & 20 LFT of Type III-B Barricade Req'd.</p>
--	--



PT Sta. = 297+10.70 "F"
 Delta = 28°30'00" LT
 R = 2864.79'
 T = 727.56'
 E = 1425.00'
 D.S. = 55 mph
 S.E. = 6.50%

BEGIN BANKING EXCEPTION
 297+76.39 Line 11-F
 END BANKING EXCEPTION
 298+36.82 Line 11-F

BEGIN BANKING EXCEPTION
 297+76.39 Line 11-F
 END BANKING EXCEPTION
 298+36.82 Line 11-F

Matchline Sta. 296+00.00 Line 11-F
 P.L. = 297+10.70

Station	Profile	Vertical Scale	Horizontal Scale	Product
1030				
1020				
1010				
1000				
990				
980				
970				
295+00		970	310+00	1900138
296+00		970	310+00	1900138
297+00		970	310+00	1900138
298+00		970	310+00	1900138
299+00		970	310+00	1900138
300+00		970	310+00	1900138
301+00		970	310+00	1900138
302+00		970	310+00	1900138
303+00		970	310+00	1900138
304+00		970	310+00	1900138
305+00		970	310+00	1900138
306+00		970	310+00	1900138
307+00		970	310+00	1900138
308+00		970	310+00	1900138
309+00		970	310+00	1900138
310+00		970	310+00	1900138

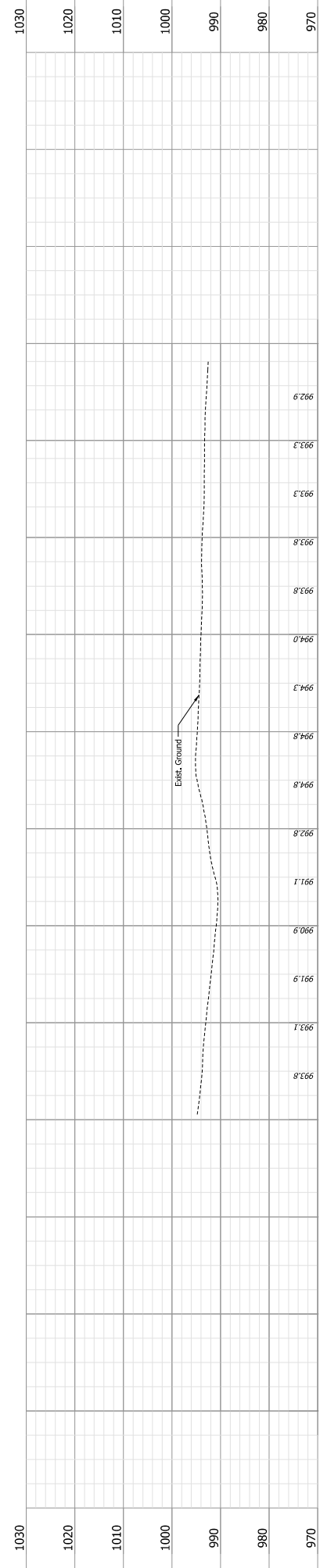
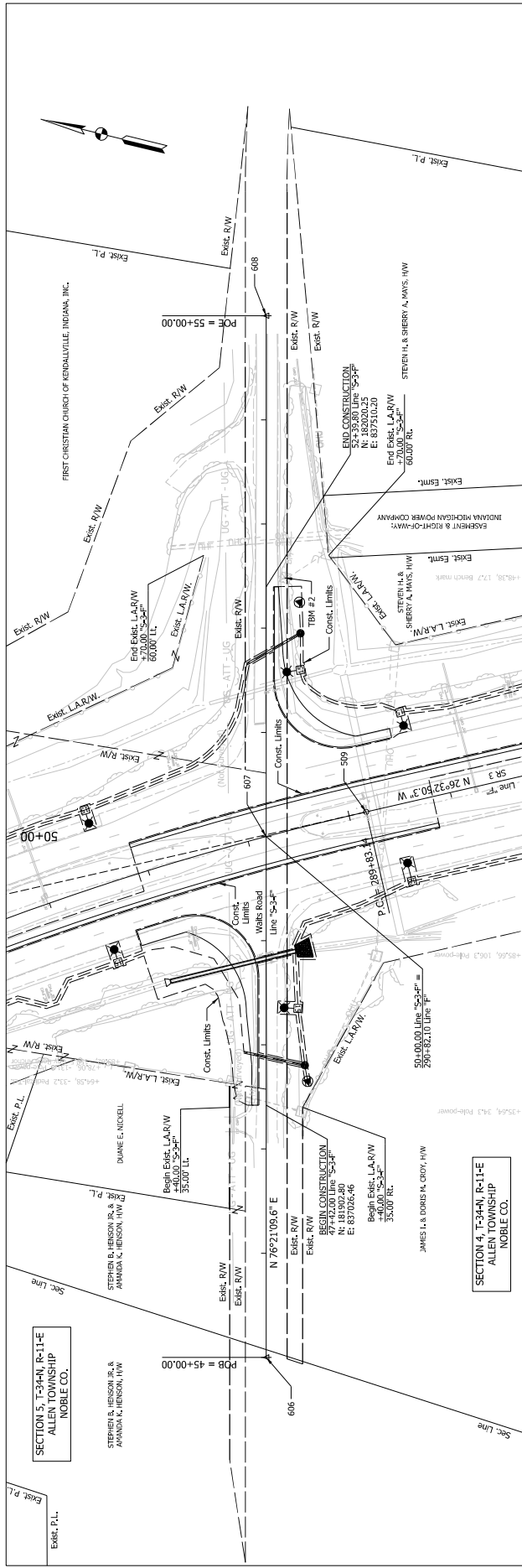
RECOMMENDED FOR APPROVAL	DESIGN ENGINEER	DATE
DESIGNED: EJM	10/13/2021	10/13/2021
CHECKED: EJR	10/26/2021	10/26/2021

INDIANA	BRIDGE FILE
DEPARTMENT OF TRANSPORTATION	DESIGNATION
PLAN AND PROFILE	1900138
LINE 11-F	SHEETS
	ELECTRONIC
	CONTRACT
	PROJECT
	442775
	1900138

NOT FOR CONSTRUCTION	
P.L. STA. 297+10.70 DELTA = 28°30'00" LT R = 2864.79' T = 727.56' E = 1425.00' D.S. = 55 MPH S.E. = 6.50%	
P.L. STA. 297+10.70 DELTA = 28°30'00" LT R = 2864.79' T = 727.56' E = 1425.00' D.S. = 55 MPH S.E. = 6.50%	

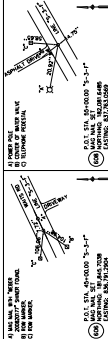
P.L. STA. 297+10.70 DELTA = 28°30'00" LT R = 2864.79' T = 727.56' E = 1425.00' D.S. = 55 MPH S.E. = 6.50%	
P.L. STA. 297+10.70 DELTA = 28°30'00" LT R = 2864.79' T = 727.56' E = 1425.00' D.S. = 55 MPH S.E. = 6.50%	

P.L. STA. 297+10.70 DELTA = 28°30'00" LT R = 2864.79' T = 727.56' E = 1425.00' D.S. = 55 MPH S.E. = 6.50%	
P.L. STA. 297+10.70 DELTA = 28°30'00" LT R = 2864.79' T = 727.56' E = 1425.00' D.S. = 55 MPH S.E. = 6.50%	



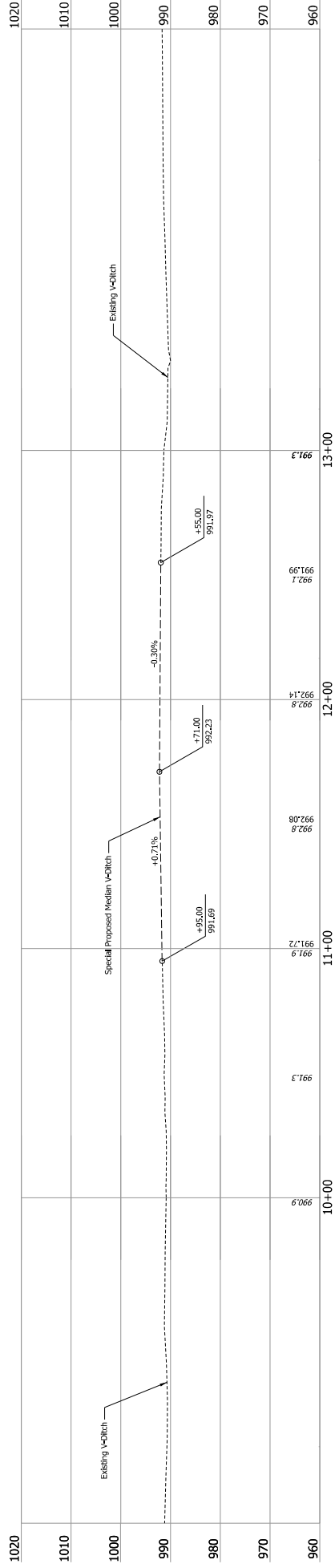
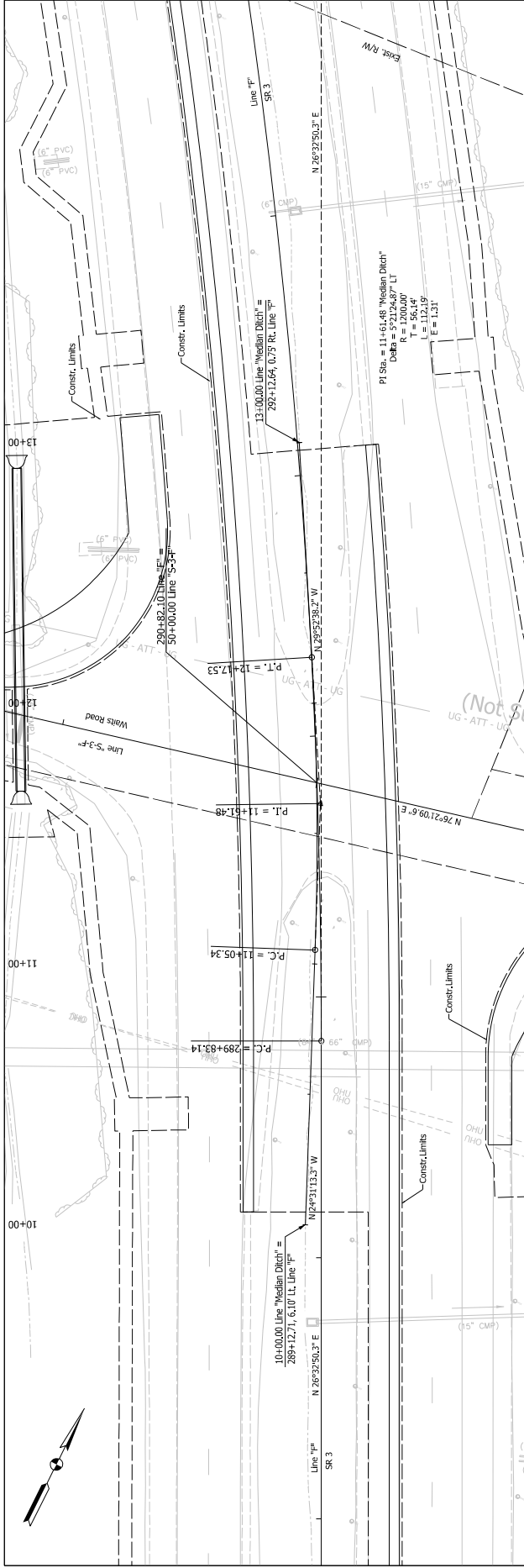
LEGEND:	RECOMMENDED FOR APPROVAL	DESIGN ENGINEER	DATE	INDIANA DEPARTMENT OF TRANSPORTATION	BRIDGE FILE
	DESIGNED: EJV	10/12/2021	10/13/2021		
	CHECKED: EJR	10/26/2021	10/26/2021	PLAN AND PROFILE LINE "S-3-F"	1500138
					SURVEY BOOK
					ELECTRONIC
					OF
					SHEETS
					29
					OF
					54
					PROJECT
					R-42375
					1500138

NOT FOR CONSTRUCTION



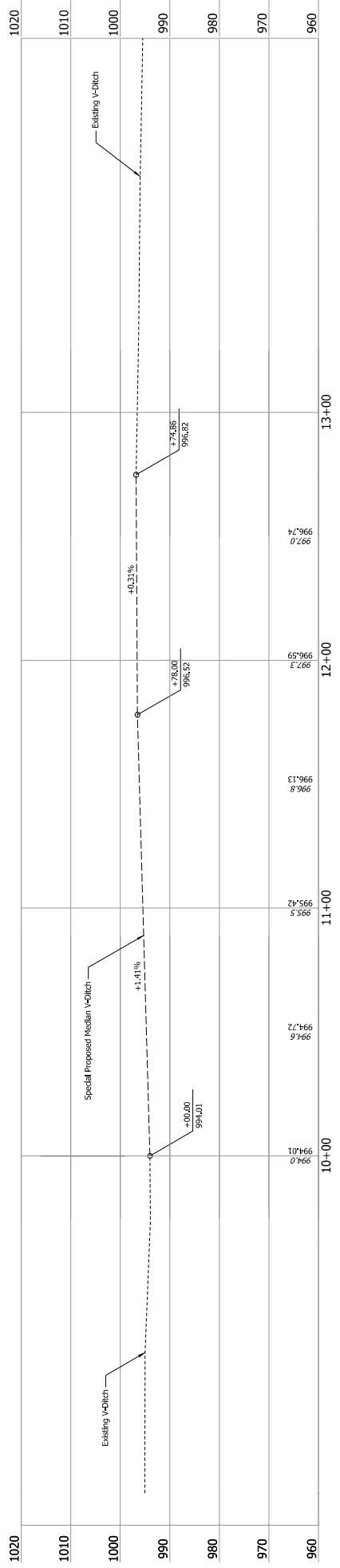
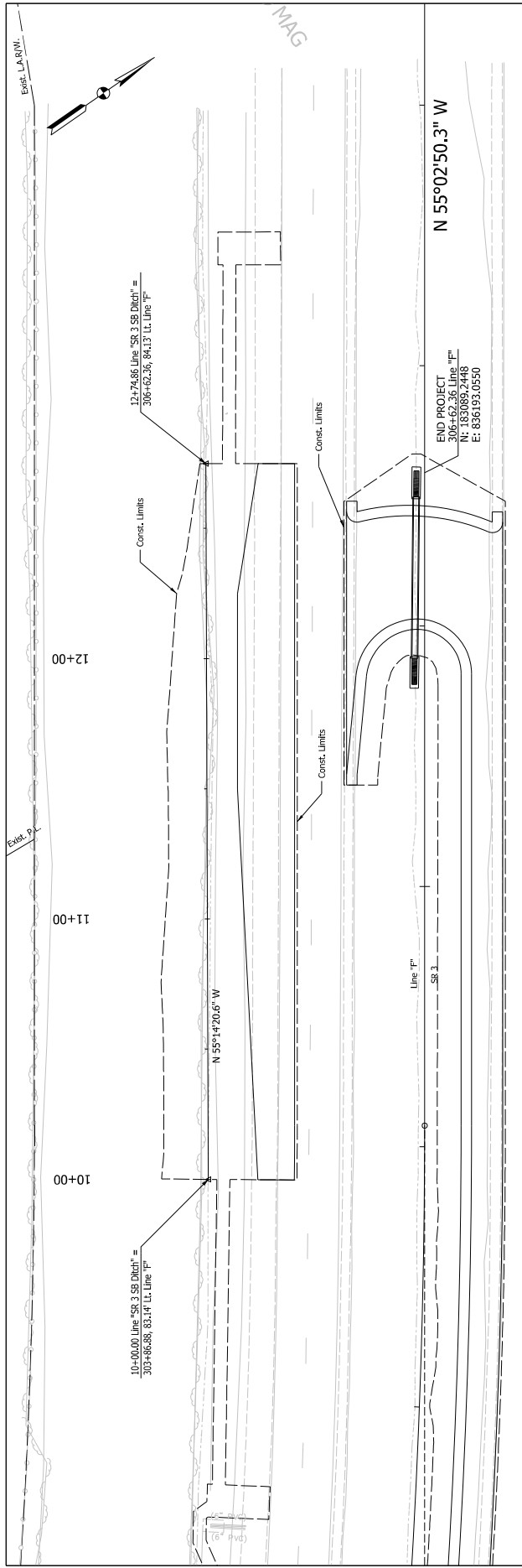
DATE PLOTTED: 10/26/2021 11:50:50 AM
 PLOT SCALE: 1" = 10'
 PLOT SHEET: 29 OF 54
 PLOT PROJECT: R-42375
 PLOT DRAWING: 02_S&P_02_351.dgn

SECTION 5, T-34N, R-11-E ALLEN TOWNSHIP NOBLE CO.
 SECTION 4, T-34N, R-11-E ALLEN TOWNSHIP NOBLE CO.



RECOMMENDED FOR APPROVAL	DESIGN ENGINEER	DATE	INDIANA DEPARTMENT OF TRANSPORTATION	
			DITCH PLAN AND PROFILE LINE "MEDIAN DITCH"	
DESIGNED: BK	DESIGNED: BK	DATE: 11/14/2022	BRIDGE FILE	1980138
CHECKED: ELM	CHECKED: ELM	DATE: 11/14/2022	HORIZONTAL SCALE	1" = 10'
			VERTICAL SCALE	1" = 10'
			SURVEY BOOK	1980138
			ELECTRONIC	34
			CONTRACT	R-42375
			PROJECT	1980138

NOT FOR CONSTRUCTION



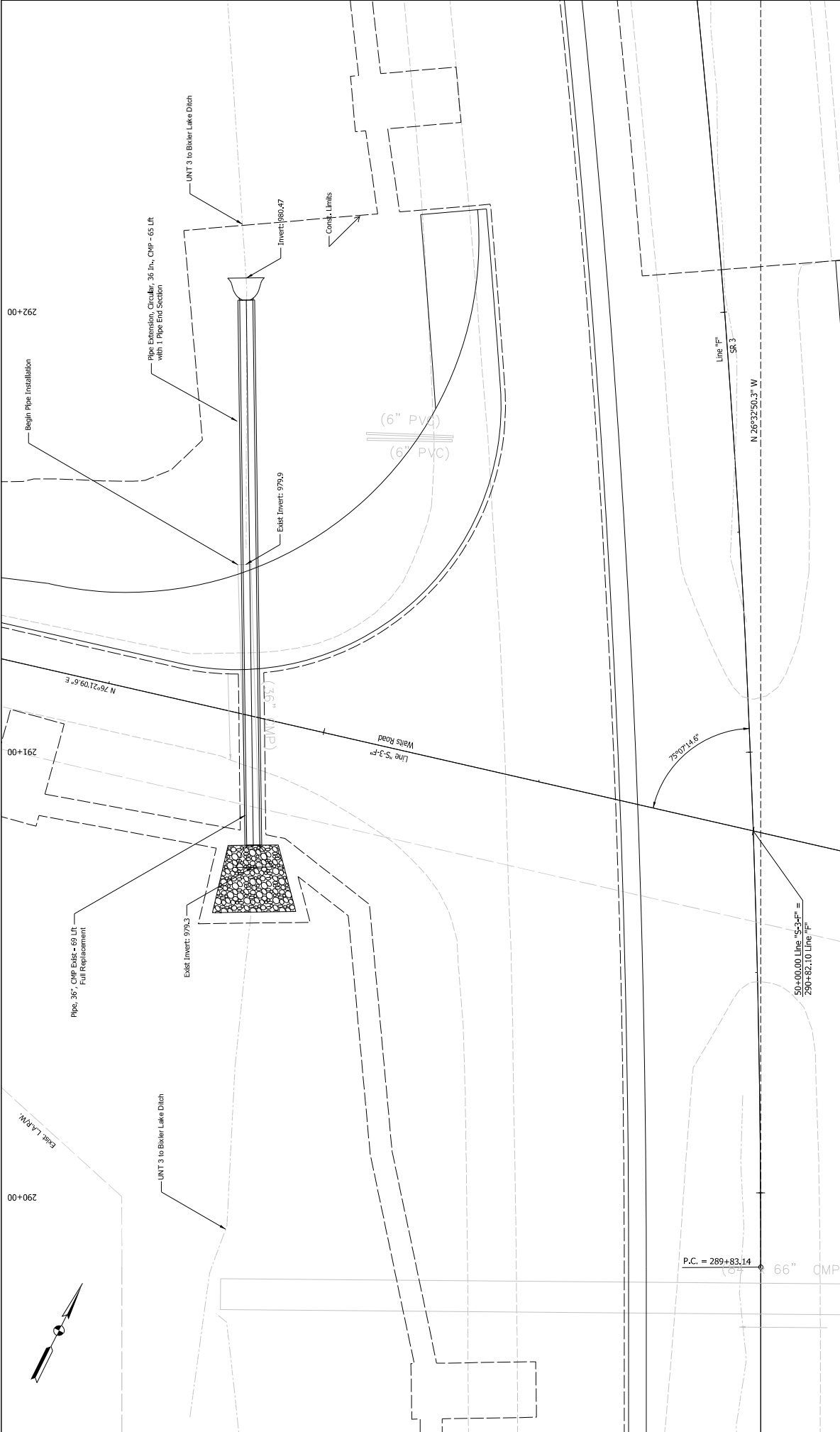
RECOMMENDED FOR APPROVAL		DESIGN ENGINEER	DATE	INDIANA DEPARTMENT OF TRANSPORTATION	BRIDGE FILE
DESIGNED BY	DESIGNED BY	DATE	DATE		
DESIGNED BY: BLM	DESIGNED BY: BLM	11/14/2022	11/14/2022	DITCH PLAN AND PROFILE LINE "SR 3 SB DITCH"	1900338
CHECKED BY: BLM	CHECKED BY: BLM	11/14/2022	11/14/2022		
				ELECTRONIC	35
				CONTRACT	of
				PROJECT	54
				CONTRACT	844275
				PROJECT	1900338

NOT FOR CONSTRUCTION

B-38

FILE: I:\MGT\1900338\43\Drawn\Sheets\SR_3_SB_Ditch\CD.dwg

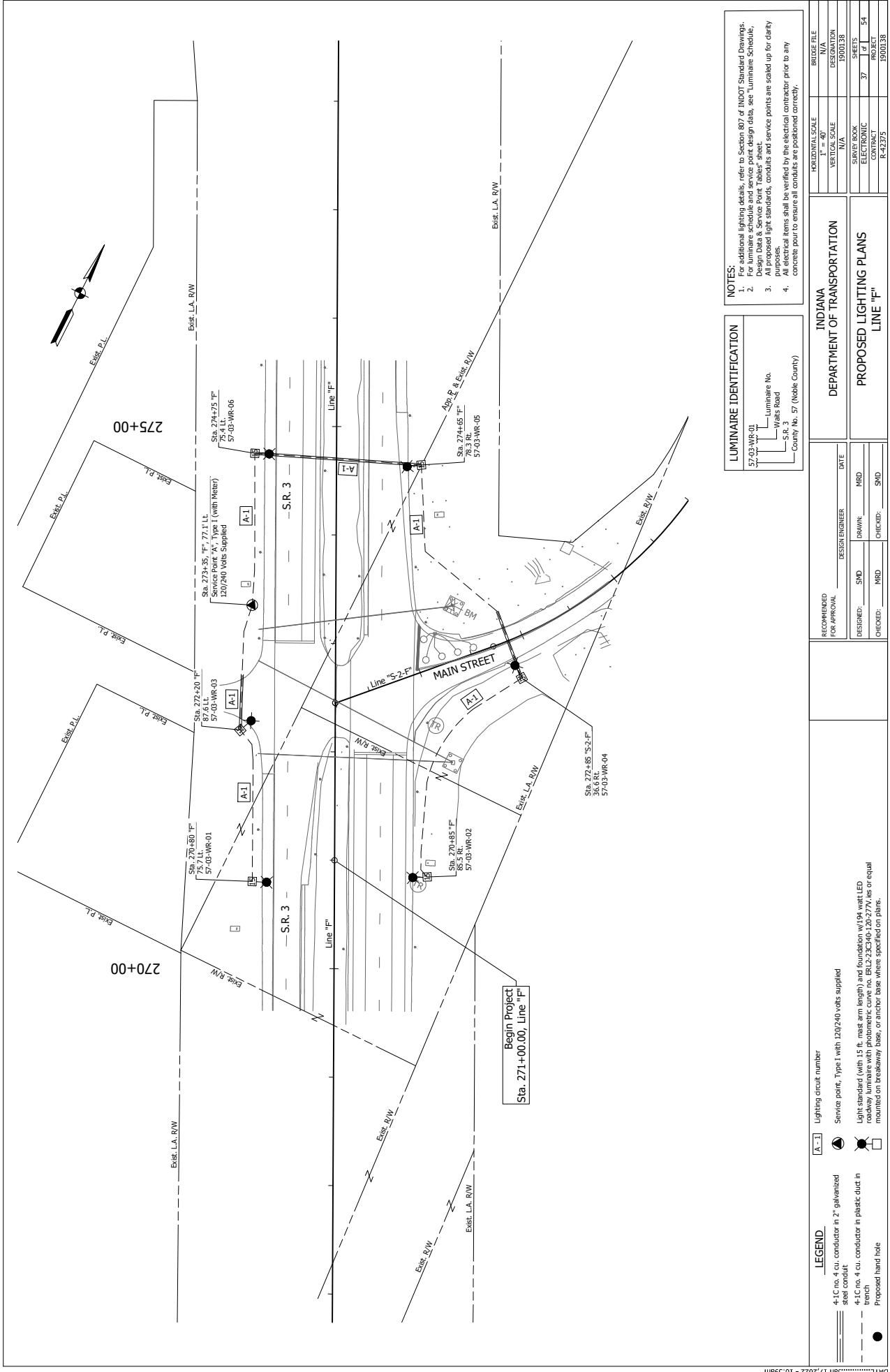
PLT: 2/28/2022 11:09:56 AM



RECOMMENDED FOR APPROVAL	DESIGN ENGINEER	DATE	INDIANA DEPARTMENT OF TRANSPORTATION	HORIZONTAL SCALE	BRIDGE FILE
	DESIGNED: BK	11/14/2022		11/14/2022	VERTICAL SCALE
DESIGNED: BK	11/14/2022	11/14/2022	DRAINAGE DETAIL LINE "F"	N/A	1900138
CHECKED: ELM	11/14/2022	11/14/2022		SURVEY BOOK	SHEETS
CHECKED: ELM	11/14/2022	11/14/2022	ELECTRONIC	36	54
			CONTRACT	842375	PROJECT
					1900138

NOT FOR CONSTRUCTION

B-39



LUMINAIRE IDENTIFICATION

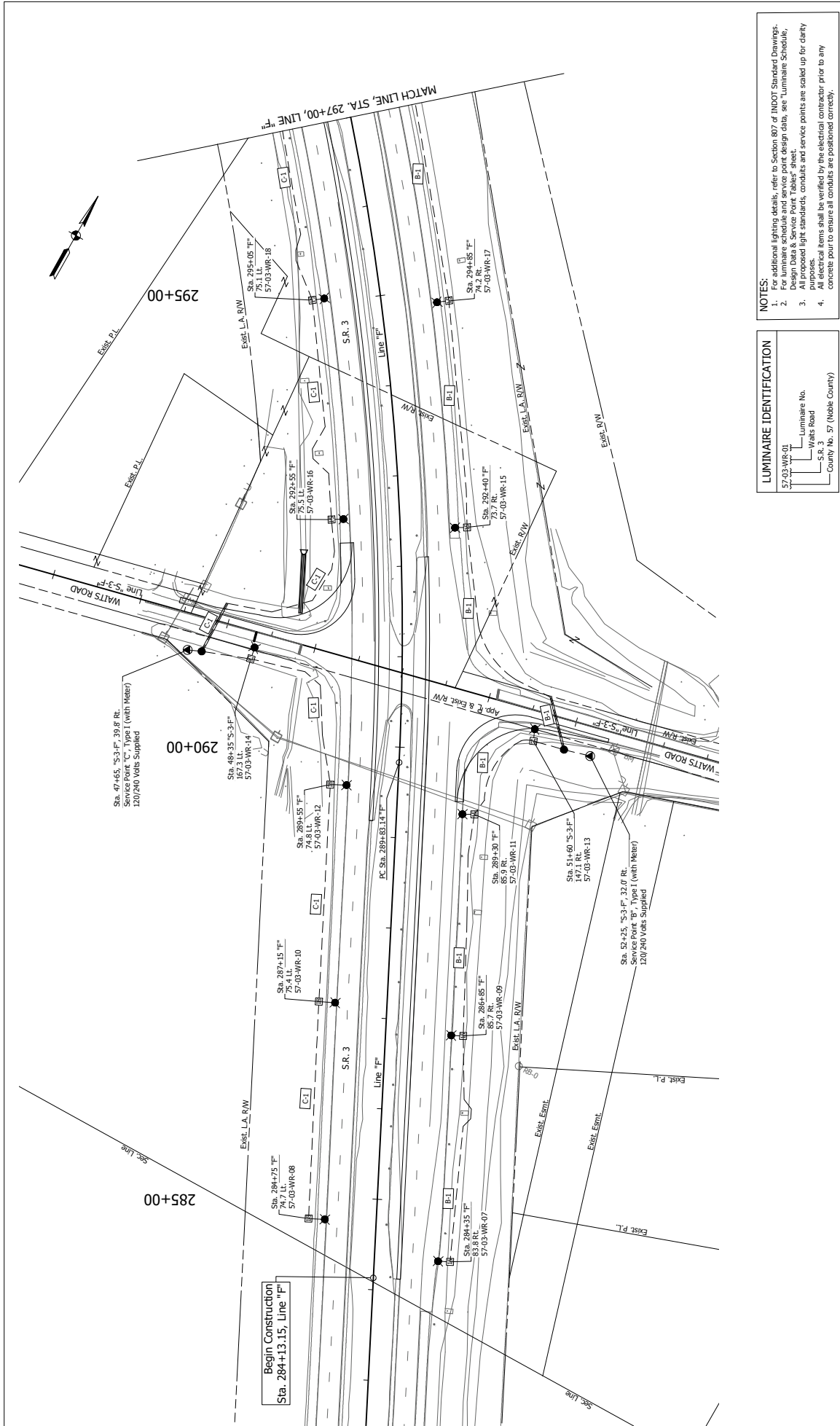
57-03-WR-01	— Luminaire No.
—	— Wailes Road
—	— S.R. 3
—	— County No. 57 (Noble County)

NOTES:

- For additional lighting details, refer to Section 807 of INDOT Standard Drawings.
- For luminaire schedule and service point design data, see "Luminaire Schedule, Design Data & Service Point Tables" sheet.
- All proposed light standards, conduits and service points are scaled up for clarity purposes.
- All electrical items shall be verified by the electrical contractor prior to any concrete pour to ensure all conduits are positioned correctly.

RECOMMENDED FOR APPROVAL	DESIGN ENGINEER	DATE	INDIANA DEPARTMENT OF TRANSPORTATION
	DESIGNED: SMD	DRAWN: MRD	
DESIGNED: MRD	CHECKED: SMD	INDIANA DEPARTMENT OF TRANSPORTATION	
CHECKED: MRD	CHECKED: SMD	INDIANA DEPARTMENT OF TRANSPORTATION	
Lighting circuit number		BRIDGE FILE	
A-1		N/A	
Service point, Type 1 with 120/240 volts supplied		DESIGNATION	
Light standard (with 15 ft. mast arm length) and foundation w/ 64" x 64" x 6" LED luminaire with 120/240 volts or equal mounted on breakaway base, or anchor base where specified on plans.		19001.38	
4-1C no. 4 cu. conductor in 2" galvanized steel conduit		SURVEY BOOK	
4-1C no. 4 cu. conductor in plastic duct in trench		ELECTRONIC	
Proposed hand hole		SHEETS	
		37 of 54	
		PROJECT	
		R-42375	
		PROJECT	
		19001.38	

D:\PROJECTS\2022\120220-1238 CMT RW Div On-call\03_S.R. 3 Wailes Road\30_SheetDrawings\Lighting\Lighting Plans\...
 FILE: 4338 LTPO1.dwg
 DISCALE: 1:1
 PLOTTED BY: MDeRose
 DATE: Jan 17, 2022 - 10:59am



<p>RECOMMENDED FOR APPROVAL</p> <p>DESIGNED: <input type="checkbox"/> SHD <input type="checkbox"/> MRD</p> <p>CHECKED: <input type="checkbox"/> MRD <input type="checkbox"/> SHD</p>	<p>DESIGN ENGINEER</p> <p>DATE</p>	<p>INDIANA DEPARTMENT OF TRANSPORTATION</p> <p>PROPOSED LIGHTING PLANS</p> <p>LINE "F"</p>	<p>HORIZONTAL SCALE</p> <p>1" = 40'</p>	<p>BRIDGE FILE</p> <p>N/A</p>
			<p>VERTICAL SCALE</p> <p>N/A</p>	<p>DESIGNATION</p> <p>19001.38</p>
			<p>SHEET BOOK</p> <p>ELECTRONIC</p> <p>38</p>	<p>SHEETS</p> <p>of 54</p>
			<p>CONTRACT</p> <p>R-42375</p>	<p>PROJECT</p> <p>19001.38</p>

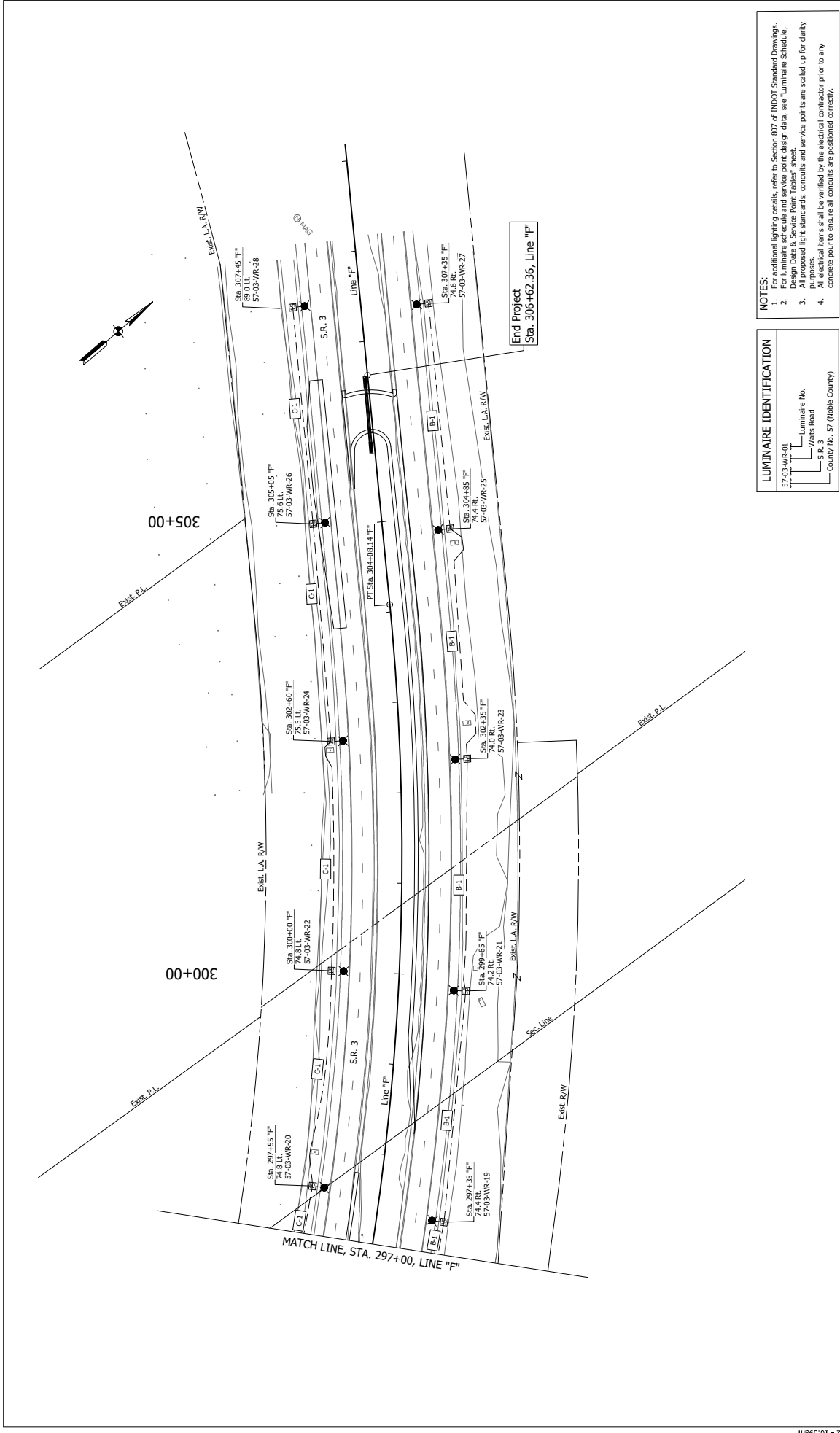
LUMINAIRE IDENTIFICATION

57-03-WR-01	Luminaire No.
Watts Road	Watts Road
S.R. 3	S.R. 3
County No. 57 (Noble County)	County No. 57 (Noble County)

- NOTES:**
- For additional lighting details, refer to Section 807 of INDOT Standard Drawings.
 - For luminaire schedule and service point design data, see "Luminaire Schedule, Design Data & Service Point Tables" sheet.
 - All proposed light standards, conduits and service points are scaled up for clarity purposes.
 - All electrical items shall be verified by the electrical contractor prior to any concrete pour to ensure all conduits are positioned correctly.

LEGEND

	4-1C no. 4 cu. conductor in 2" galvanized steel conduit
	4-1C no. 4 cu. conductor in plastic duct in trench
	Proposed hand hole
	A-1 Lighting circuit number
	Service point, Type 1 with 120/240 volts supplied
	Light standard (with 15 ft. mast arm length) and foundation w/54" x 54" x 12" LED luminaire mounted on 120/240 volts or equal mounted on breakaway base, or anchor base where specified on plans.



LUMINAIRE IDENTIFICATION

57-03-WR-01	Luminaire No.
74.4 R/W	Walks Road
S.R. 3	County No. 57 (Noble County)

- NOTES:**
- For additional lighting details, refer to Section 807 of INDOT Standard Drawings.
 - For luminaire schedule and service point design data, see "Luminaire Schedule, Design Data & Service Point Tables" sheet.
 - All proposed light standards, conduits and service points are scaled up for clarity purposes.
 - All electrical items shall be verified by the electrical contractor prior to any concrete pour to ensure all conduits are positioned correctly.

RECOMMENDED FOR APPROVAL DESIGN ENGINEER: _____ DATE: _____ DRAWN: MRD CHECKED: SMD	INDIANA DEPARTMENT OF TRANSPORTATION		HORIZONTAL SCALE 1" = 40'	BRIDGE FILE N/A
	PROPOSED LIGHTING PLANS LINE "F"		VERTICAL SCALE N/A	DESIGNATION 19001.38
DESIGNED: SMD CHECKED: MRD		SURVEY BOOK ELECTRONIC		SHEETS 39 of 54
		CONTRACT R-42375		PROJECT 19001.38

- LEGEND**
- 4-1C no. 4 cu. conductor in 2" galvanized steel conduit
 - 4-1C no. 4 cu. conductor in plastic duct in trench
 - Proposed hand hole
 - A-1 Lighting circuit number
 - Service point, Type 1 with 120/240 volts supplied
 - Light standard (with 15 ft. mast arm length) and foundation of 694, with LED luminaire (with 15 ft. mast arm length) in 20-277V AC or equal mounted on breakaway base, or anchor base where specified on plans.

DIRECTORY...F:\2020\120-438 CMT RW Dist On-call\03_S.R. 3_Walks Road\30_SheetDrawings\Lighting\Lighting Plans\...
 FILE...4338 LTPO1.dwg
 DISCALE: 1 LTSCALE: 1
 PLOTTED BY: MDeRose
 DATE: Jan 17, 2022 - 10:59am