

SR 163 over Brouilletts Creek Public Hearing

VERMILLION COUNTY | DES. NO. 1701589

BRIDGE NO. 163-83-01393A (NBI NO. 28420)

JANUARY 17, 2023 | 5:30 – 7:00 P.M., PRESENTATION AND HEARING 6:00 P.M.

SOUTH VERMILLION HIGH SCHOOL



PRESENTERS

Mindy Peterson

Public Involvement Director, Parsons

Sean Porter

Project Manager, Parsons

Mary Kennedy

Historic Bridge Specialist, INDOT



AGENDA TOPICS

1. Public Hearing Overview
2. Project Overview
3. Historic Bridge Status
4. Preferred Alternative
5. Public Hearing



Public Hearing Overview



PUBLIC HEARING AND FORMAL COMMENTS

- Sign up to share formal comments
- Presentation begins at 6 p.m.
- Verbal comment period follows the presentation
- Speakers will be called in the order they signed up
- Comments are limited to 3 minutes; time warning will be provided



FORMAL COMMENT PERIOD

30-Day Public Comment Period

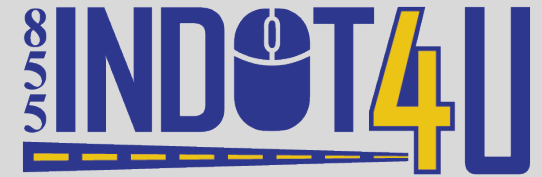
- Started with hearing notice
- Continues through February 1
- Several ways to provide comments
- Tonight's formal comment period is only one opportunity
- All comments are considered equally; regardless of comment channel
- Final environmental document will address comments received



FORMAL COMMENT PERIOD

Comment Channels

- Verbal comments tonight
- Written comments
 - Placed in comment box tonight
 - By mail after hearing
 - By email after hearing
- Call INDOT customer service



Please mention "SR 163
Brouilletts Creek Bridge" in
correspondence.

1-855-INDOT4U (463-6848)
INDOT4U.com
INDOT@indot.in.gov

Comments must be submitted by **February 1, 2023** to be included in the public hearing record.



Project Overview



PROJECT LOCATION



PURPOSE AND NEED

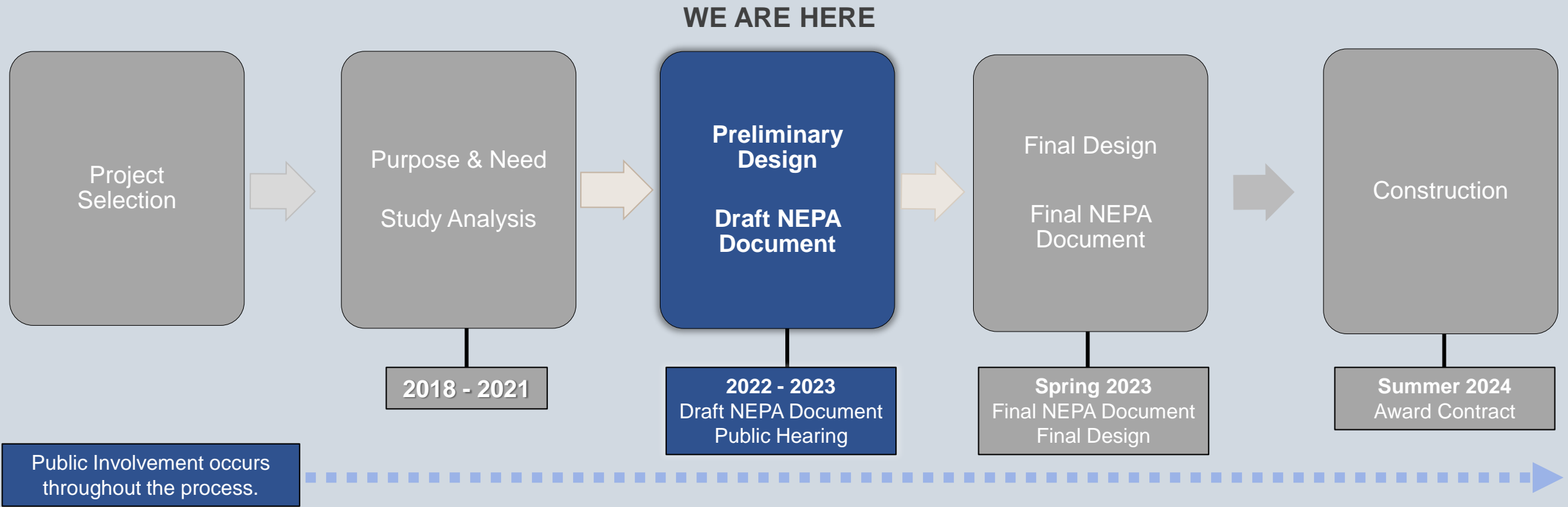
- **Purpose:**
 - Maintain a crossing of SR 163 over Brouilletts Creek with an overall condition of at least 7 out of 9 (good condition)
 - Provide a minimum HS-15 (27 tons) load rating
 - Improve shoulder widths to improve safety and protect bridge
- **Need:**
 - Deteriorating condition
 - Doesn't meet design standards for travel lanes, shoulder widths and load rating
 - Numerous vehicle-bridge collisions

Achieving these goals should extend the remaining life of the structure by a minimum of 30 years.

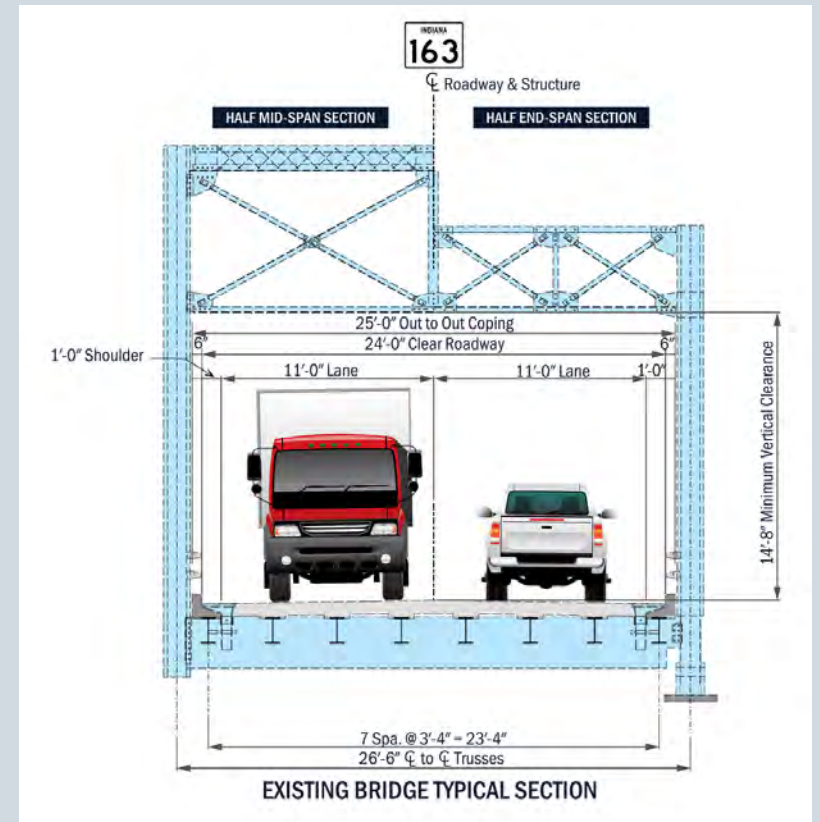
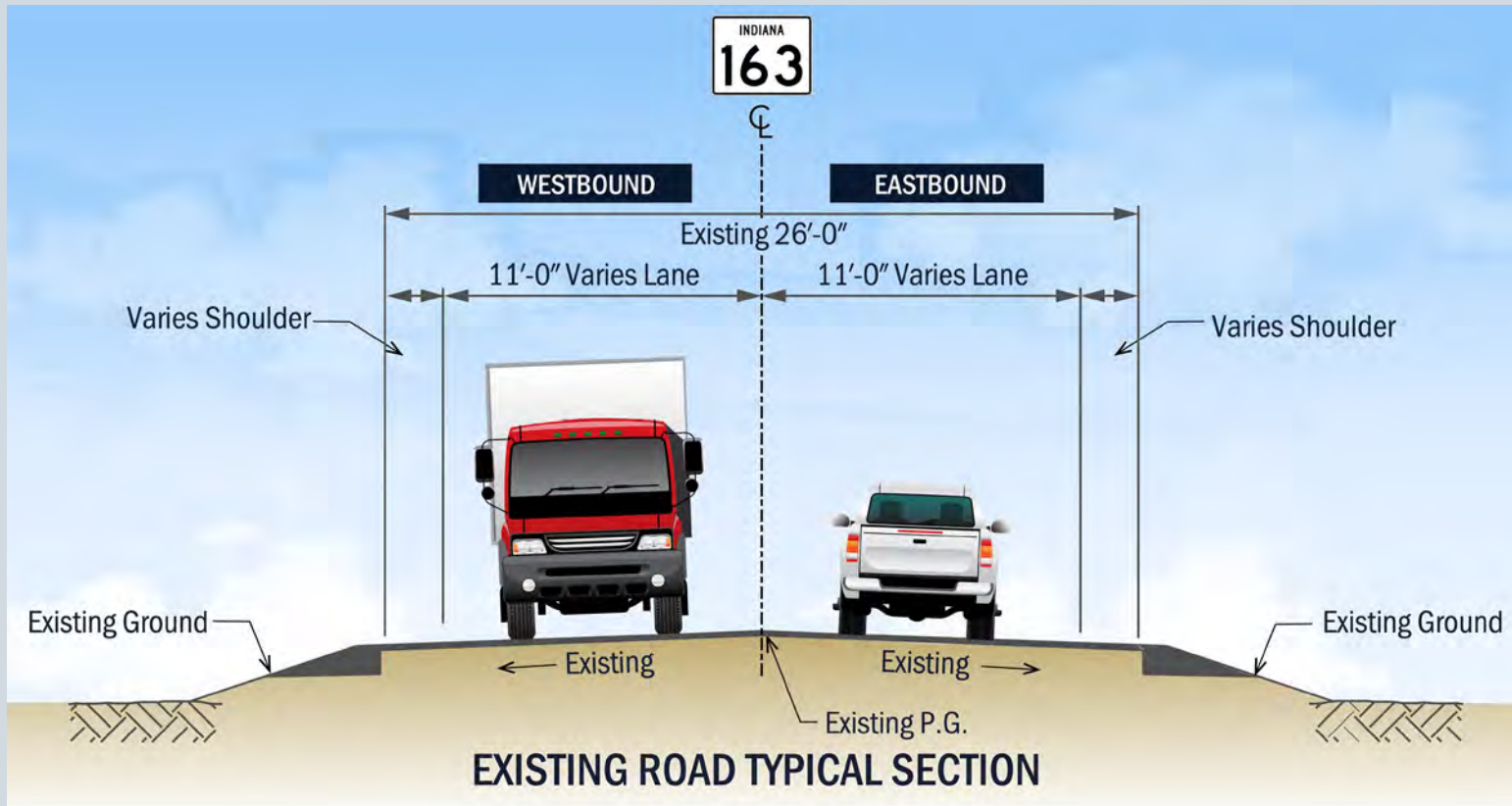


PROJECT DEVELOPMENT PROCESS

Environmental Document – Categorical Exclusion Level 4 (CE-4)



EXISTING CONDITIONS

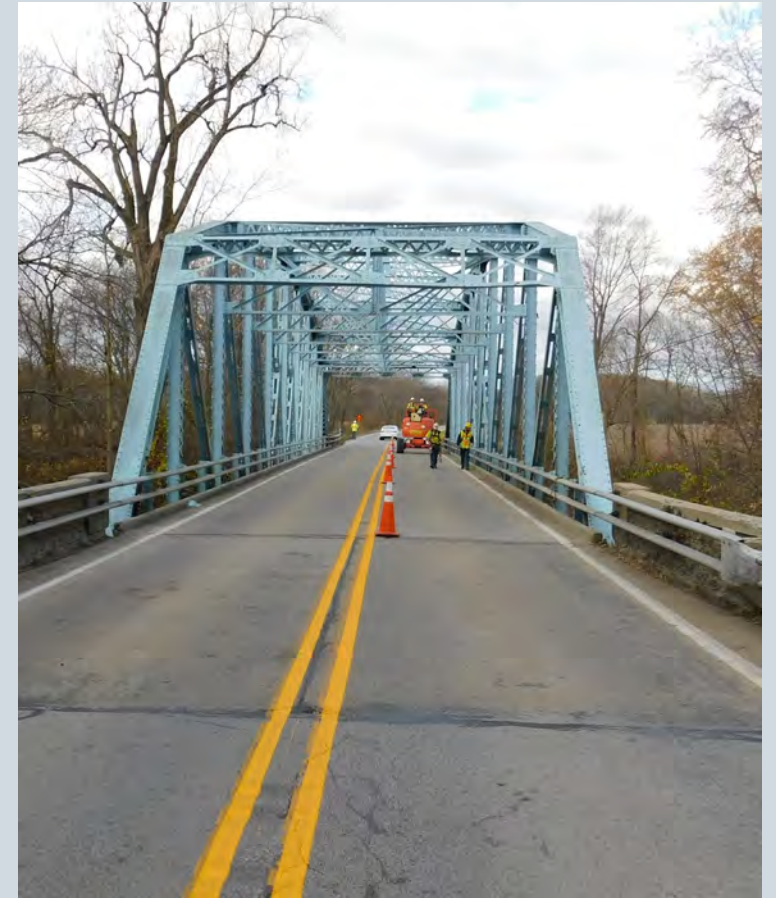


EXISTING CONDITIONS



SR 163 OVER BROUILLETTS CREEK BRIDGE

- Existing bridge is a 175-foot single-span Parker Steel Thru Truss Bridge
- Built in 1932 by the Vincennes Bridge Company
- Reevaluation in 2020 determined it is a rare type in Crawfordsville District
- Eligible as of 2020 for the National Register of Historic Places (NRHP)
- Determined “Select” per parameters of Indiana Historic Bridge Inventory



NATIONAL ENVIRONMENTAL POLICY ACT (1969)

Federal Process

- Requires that federal agencies consider the effects of their actions on surrounding natural, cultural, and social environments:
 - Right-of-Way
 - Floodplains
 - Noise
 - Wetlands & Waterways
 - Air Quality
 - Hazardous Materials
 - Historic & Archaeological
 - Threatened & Endangered Species
- Requires public be provided the opportunity to be involved and comment
- Requires impacts be described in an environmental document



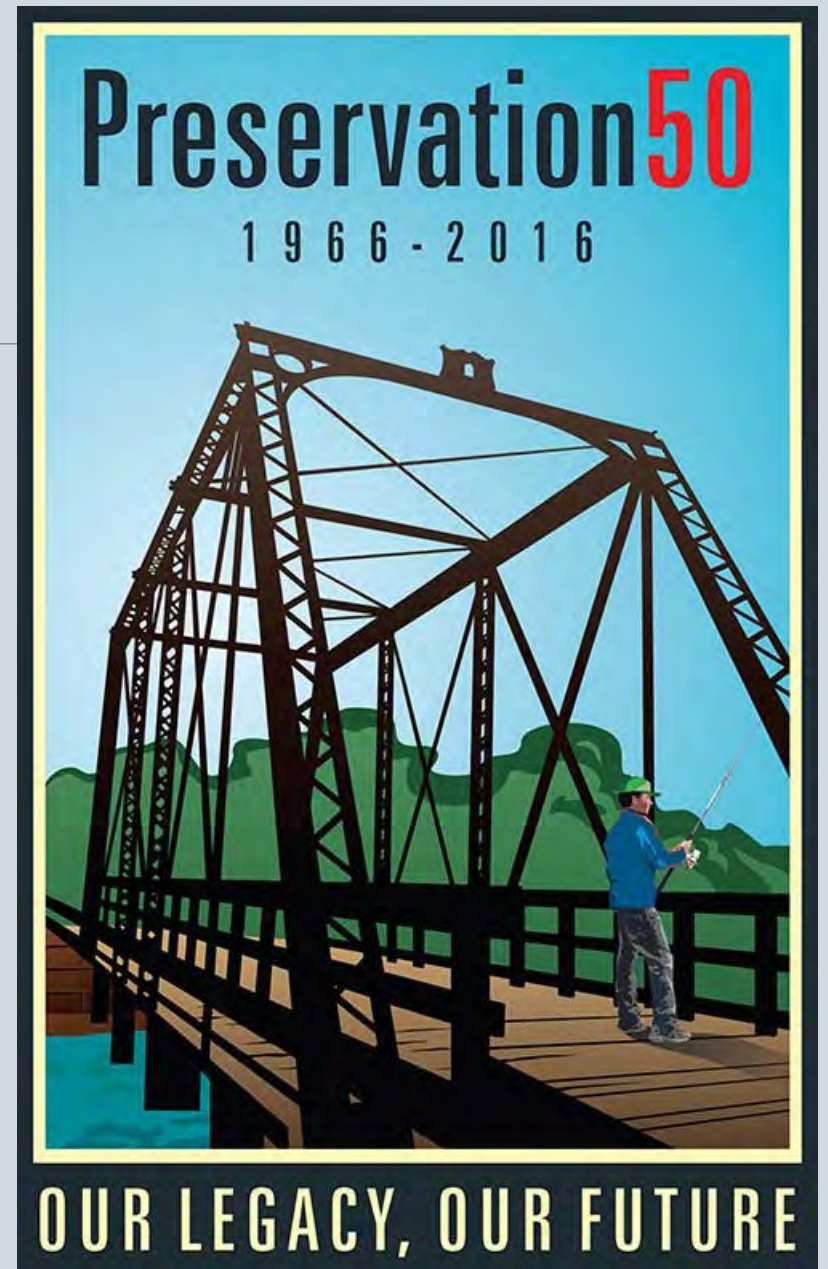
Historic Bridge Status



WHAT IS SECTION 106?

National Historic Preservation Act (1966):

- Federal agencies are to take into account the effects of their undertakings on properties listed in, or eligible for listing in, the NRHP
- Afford the Advisory Council on Historic Preservation (ACHP) the opportunity to consult (www.achp.gov)



SECTION 106 PROCESS: STEPS

4 Main Steps:

- Initiate the process
- Identify historic properties
- Assess effects of undertaking on historic properties
- Resolve any adverse effects



INDIANA'S HISTORIC BRIDGES PROGRAMMATIC AGREEMENT

- Section 106 process for historic bridges
- Agreement executed in 2006: FHWA, INDOT, ACHP, Indiana State Historic Preservation Officer (SHPO)
- 2010 – list of historic bridges in Indiana built prior to 1965
- All bridges eligible for or listed in NRHP categorized as Select or Non-Select

SIGNATORIES

FEDERAL HIGHWAY ADMINISTRATION
Robert F. Tally, Jr. 8/2/06
Robert F. Tally, Jr., P.E. Date
Division Administrator

INDIANA HISTORIC PRESERVATION OFFICER
Kyle Hupfer 7/2/06
Kyle Hupfer Date
Director, Indiana Department of Natural Resources
Indiana State Historic Preservation Officer

ADVISORY COUNCIL ON HISTORIC PRESERVATION
John M. Fowler 8/4/06
John M. Fowler Date
Executive Director

INVITED SIGNATORY
INDIANA DEPARTMENT OF TRANSPORTATION
Thomas O. Shatt 7/21/06
Thomas O. Shatt Date
Commissioner

Programmatic Agreement Regarding Management and Preservation of Indiana's Historic Bridges

July 17, 2006
Page 11 of 11



INDIANA'S HISTORIC BRIDGES PROGRAMMATIC AGREEMENT

- **Select:** Most suitable for preservation and excellent examples of a given type of historic bridge
- **Non-Select:** Not considered excellent examples of a given type of historic bridge or are not suitable candidates for preservation
- FHWA will not participate in a project that would result in the demolition of a Select Bridge



INDIANA'S HISTORIC BRIDGES PROGRAMMATIC AGREEMENT

- Streamlines steps 2-4 of the Section 106 process
- Historic bridges have already been identified
- Assessment of effects on the bridges themselves is not necessary
 - Standard treatment
 - Based on scope: Rehabilitation or replacement
 - Based on in-depth alternatives analysis
- Mitigation
 - Marketing of bridges (primarily Non-Select Bridges)
 - Photo-documentation



SR 163 OVER BROUILLETTS CREEK

HISTORIC STATUS

- Bridge No. 163-83-01393A (NBI No. 28420)
- Built in 1932 by Vincennes Bridge Company
- Indiana State Highway Commission (ISHC) design
- Parker Thru Truss
- Originally Determined Not Eligible for NRHP



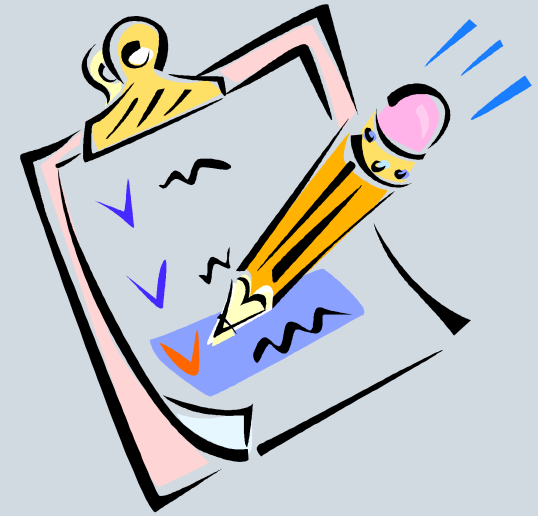
WHAT IS THE NRHP?

- Administered through the National Park Service.
- The official federal listing of resources that have been identified as worthy of recognition and preservation.
- Listed resources can include sites, buildings, districts, structures and/or objects.



NRHP ELIGIBILITY

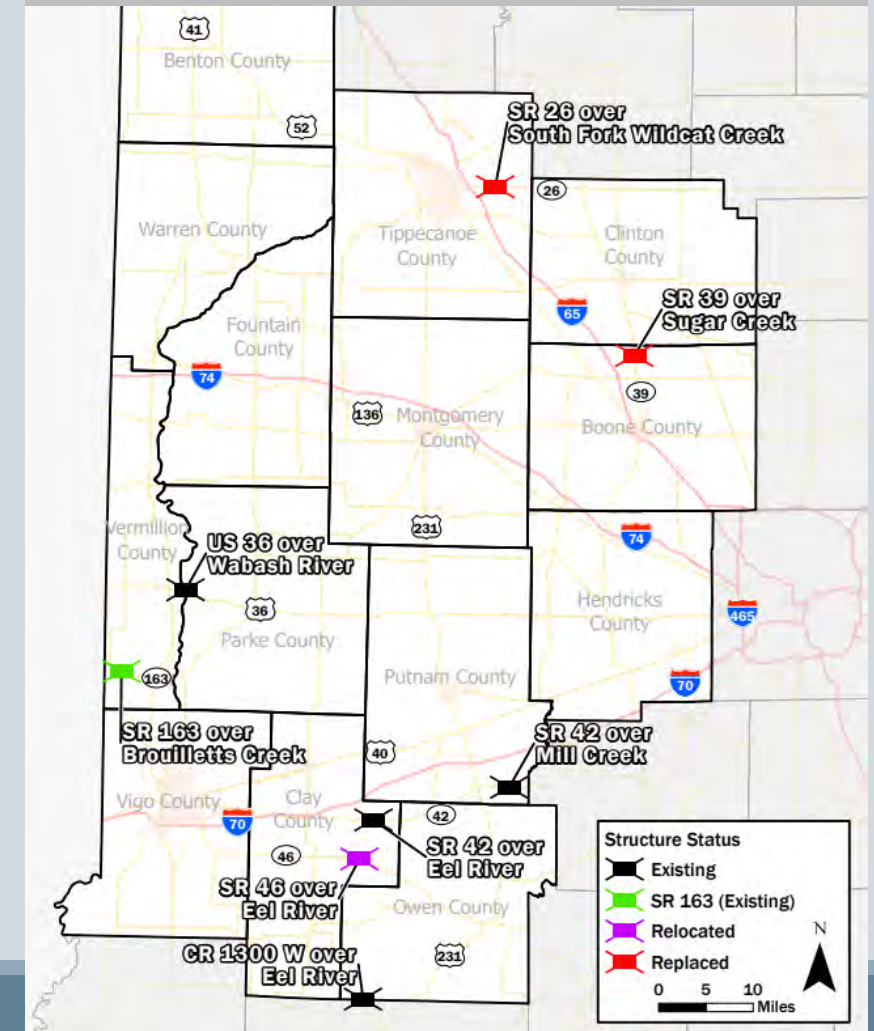
- Typically, at least 50 years old
- Maintain certain degree of integrity
- Hold significance:
 - Events
 - Persons
 - Architecture/Design/Engineering
 - Information potential (archaeology sites)
- For the purposes of Section 106, properties that are eligible for listing on the NRHP are treated the same as properties that are listed on the NRHP.



SR 163 OVER BROUILLETTS CREEK HISTORIC STATUS

- Re-evaluated in 2020
- Now considered rare type in Crawfordsville District
- 2010 – 8 examples;
2020 – 5 examples

Crawfordsville District
Historic Parker Thru Truss Bridges



SR 163 OVER BROUILLETTS CREEK

HISTORIC STATUS

- Points for rarity (2)
- Points for significant builder (3)
- Points deducted for integrity (-2)
- 2020 – NRHP Eligible

Determine National Register Eligibility	
Significance Points Total	5
Loss of Integrity Points Total	<u>-2</u>
Total Points for Bridge 163-83-01393A	3

***If a bridge possesses 1 point or more, the bridge is recommended eligible for the National Register.**

***If a bridge possesses 0 points or less, the bridge is not recommended eligible for the National Register.**



SR 163 OVER BROUILLETTS CREEK

HISTORIC STATUS

- **May 2020** – “Low” Eligibility Score and “Medium” Condition Score –Box 8 of the matrix
- Box 1 and 2 are Select
- Boxes 4 and 5 are Select bridges unless constructed after 1944
- Box 3 requires individual review
- Boxes 6, 7, 8, and 9 are Non-Select

Selection Matrix

Condition Score	High	1	4	7
	Medium	2	5	8
	Low	3	6	9
		High	Medium	Low
		Eligibility Score		

Legend:
Select (Green dashed border)
Non-Select (Red dashed border)

Box 8 is circled in blue.

SR 163 OVER BROUILLETT'S CREEK SELECT/NON-SELECT EVALUATION

- **December 2020** – Revised NRHP evaluation – no points deducted for integrity
- **January 2021** – “Medium” Eligibility Score and “Medium” Condition Score – Box 5 of the matrix
- Boxes 4 and 5 are Select bridges unless constructed after 1944
- Final Determination = Select Bridge

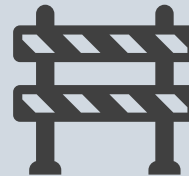
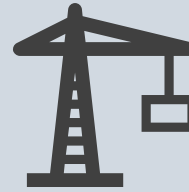
Determine National Register Eligibility	
Significance Points Total	5
Loss of Integrity Points Total	0
Total Points for Bridge 163-83-01393A	5

*If a bridge possesses 1 point or more, the bridge is recommended eligible for the National Register.
*If a bridge possesses 0 points or less, the bridge is not recommended eligible for the National Register.

High	Medium	Low
Eligibility Score		

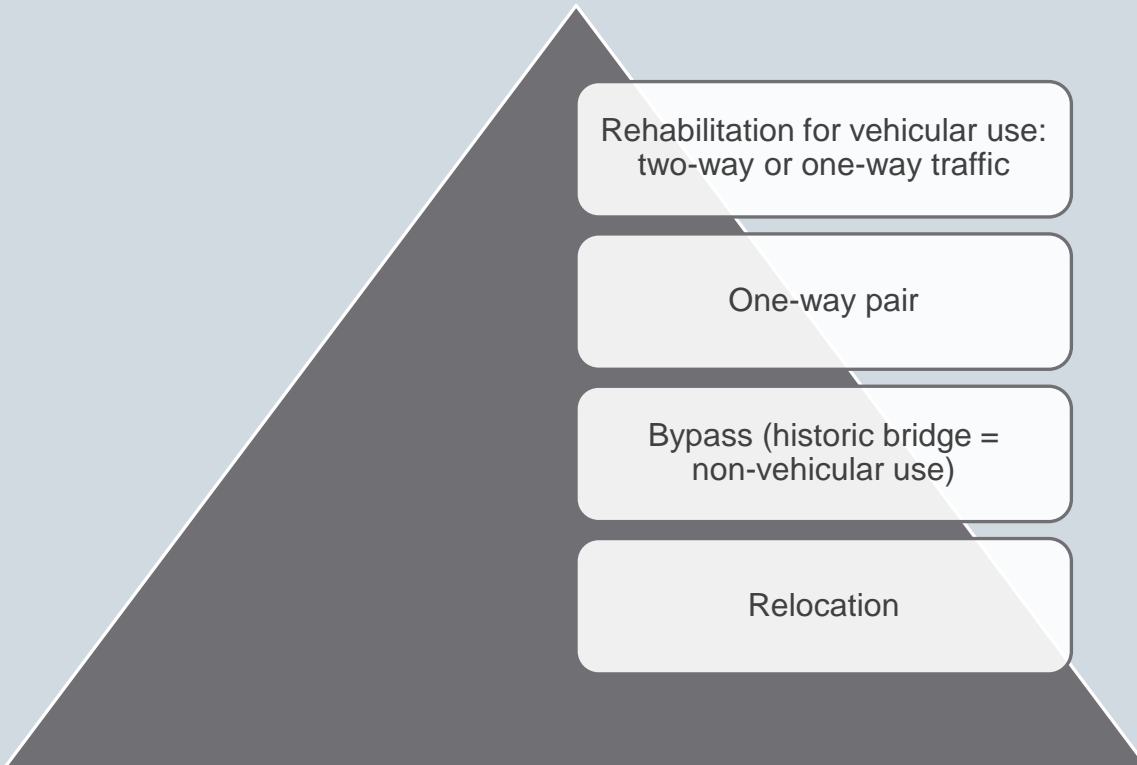
INDIANA'S HISTORIC BRIDGES PROGRAMMATIC AGREEMENT

- FHWA will not participate in a project that would result in the demolition of a Select Bridge
- Thorough Alternatives Analysis required – stop when prudent and feasible alternative is found



INDIANA'S HISTORIC BRIDGES PROGRAMMATIC AGREEMENT

- Hierarchy of alternatives examined:



SR 163 OVER BROUILLETTS CREEK

SECTION 106 CONSULTATION TIMELINE

- **December 2019** – Consultation initiated
- **April 2020** – Historic Properties Report (HPR) distributed
- **May 2020** – Select/Non-Select Evaluation report distributed
- **January 2021** – HPR Addendum & Revised Select/Non-Select Evaluation report distributed
- **April 2021** – Consulting Parties meeting to discuss alternatives
- **November 2021** – Historic Bridge Alternative Analysis (HBAA) distributed
- **November - December 2021** – Request for comment on re-classifying bridge to Select



SR 163 OVER BROUILLETTS CREEK

SECTION 106 CONSULTATION TIMELINE

- **January-February 2022** – Final reclassification memo signed and posted
- **March 2022** – Finding of No Historic Properties Affected signed and distributed
- **October 2022** – Environmental document released for public involvement
- **January 2023** – Public Hearing
- **Still to be done:**
 - SHPO and consulting party review of rehabilitation plans at approximately 30% complete, approx. 60% complete, and final plans



Preferred Alternative





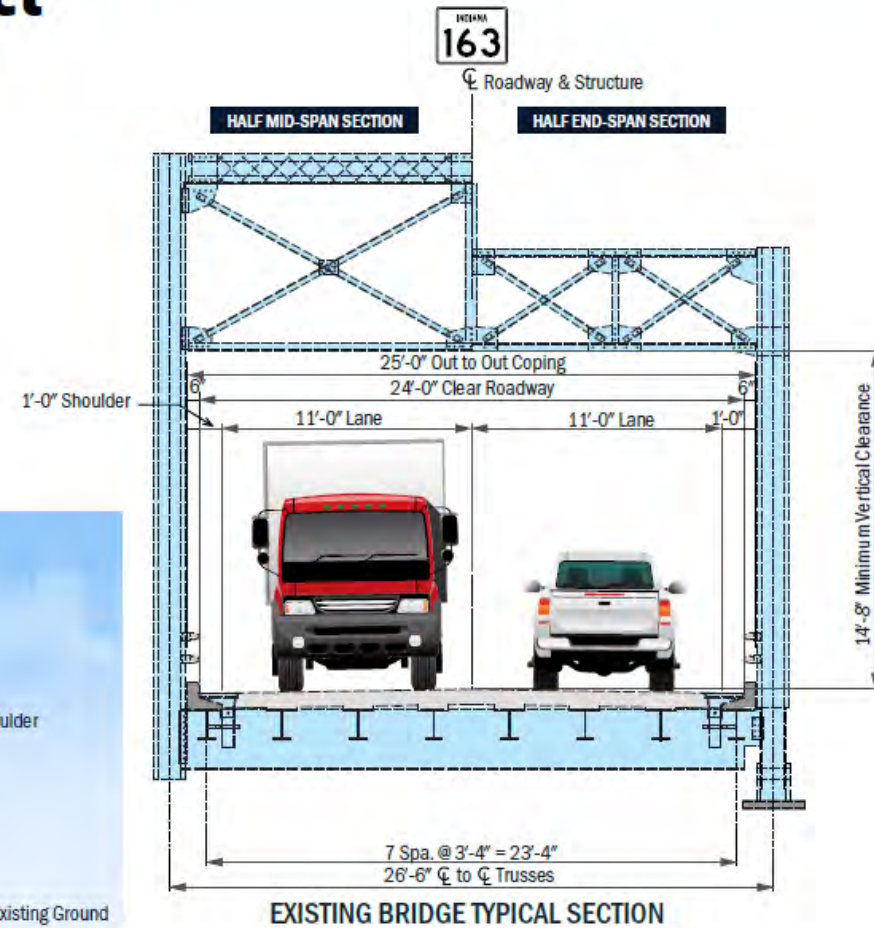
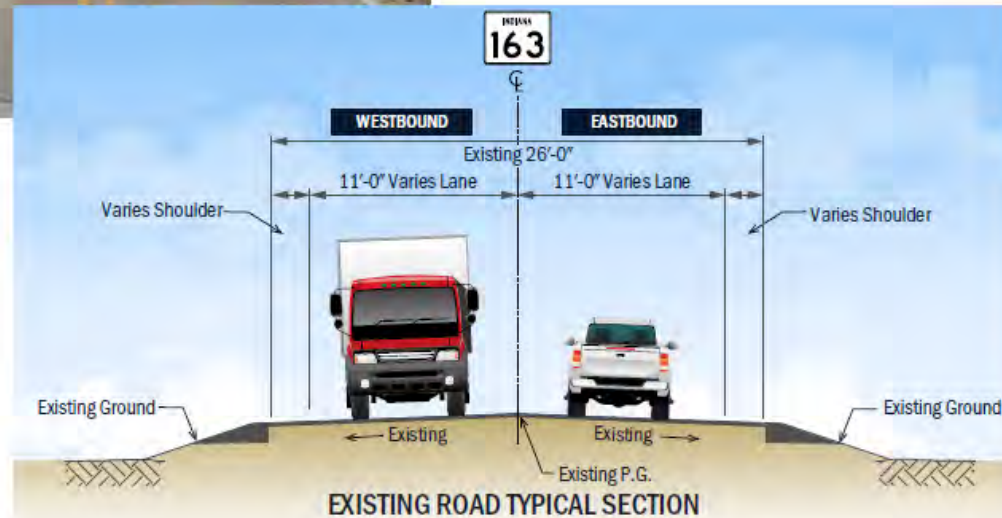
Existing Conditions

SR 163 Brouillets Creek Bridge Project

Crawfordsville District | Vermillion County | Des. No. 1701589



EXISTING BRIDGE



EXISTING CONDITIONS



EXISTING CONDITIONS



EXISTING CONDITIONS

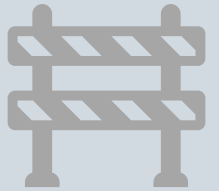


FOUR ALTERNATIVES EVALUATED

1. No Build

Retain existing bridge

Does not meet Purpose and Need



2. Rehabilitation for Continued Vehicle Use – Two-Way Operation

Retain existing bridge

Does not address shoulder and lane width needs



3. Rehabilitation for Continued Vehicular Use - One-Way Operation

Preferred Alternative

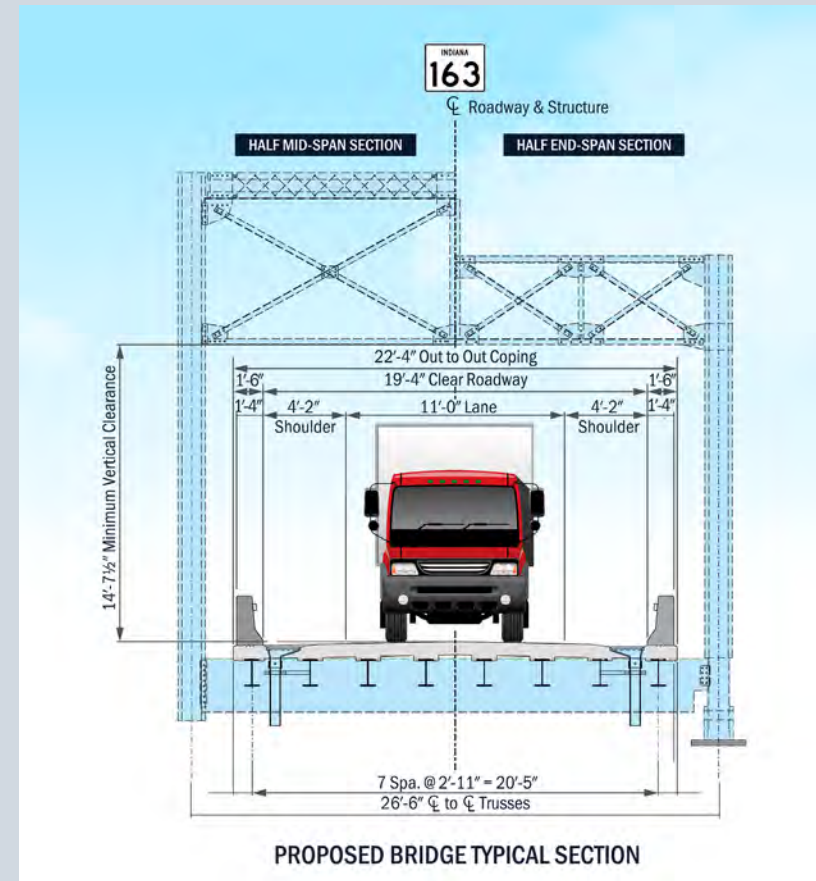
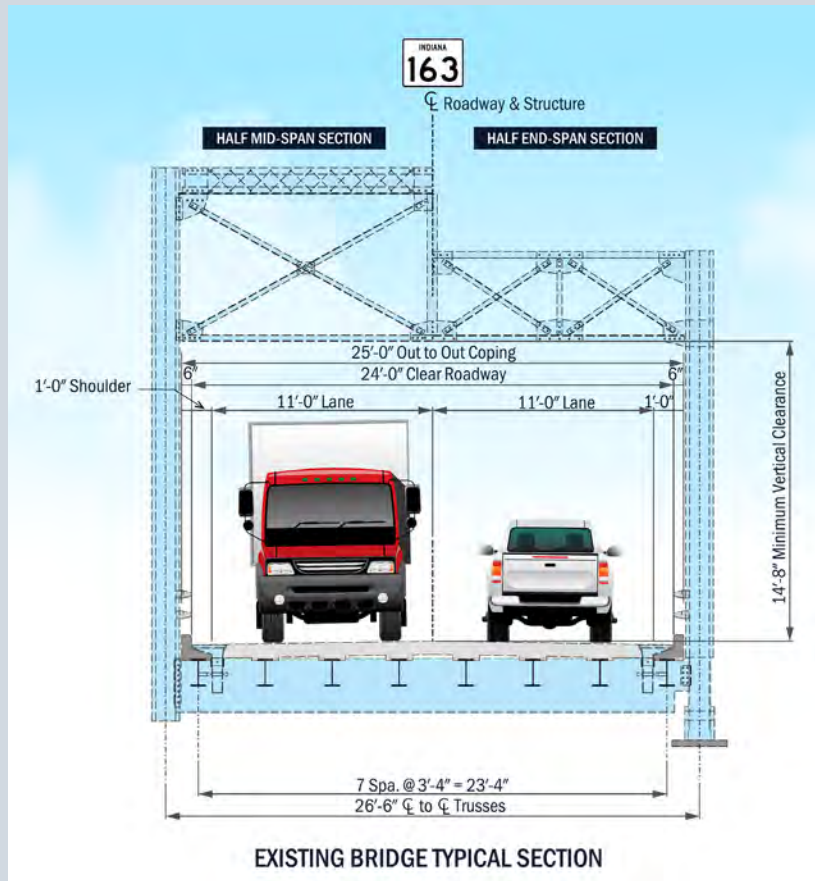
4. Rehabilitation for Continued Vehicular Use – One-Way Pair

Retain existing bridge and add a new bridge

More impacts (ecological, right-of-way, etc.) than Preferred Alternative



EXISTING AND PROPOSED CONDITIONS

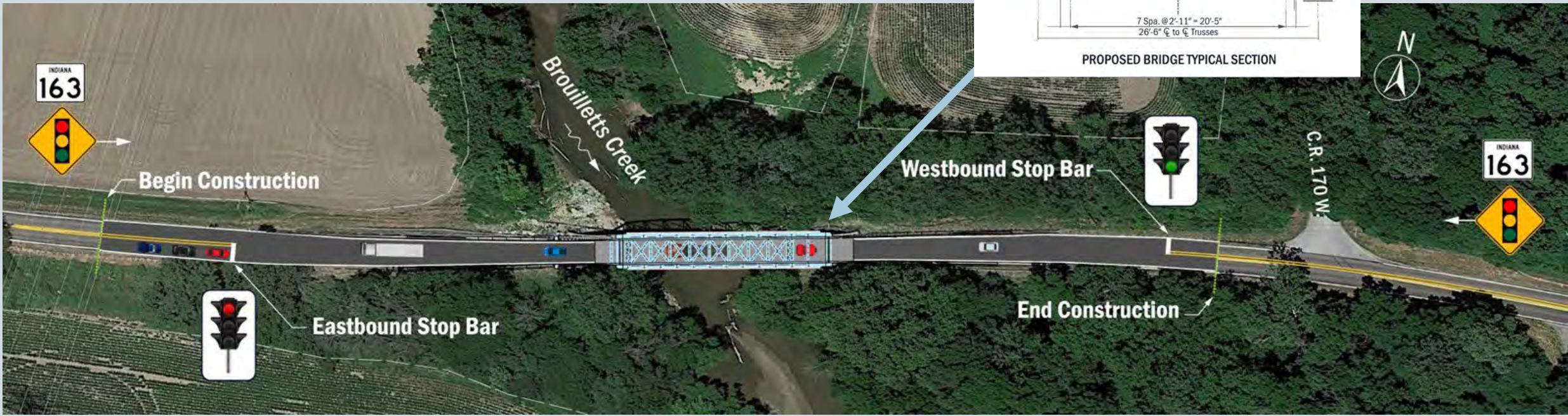
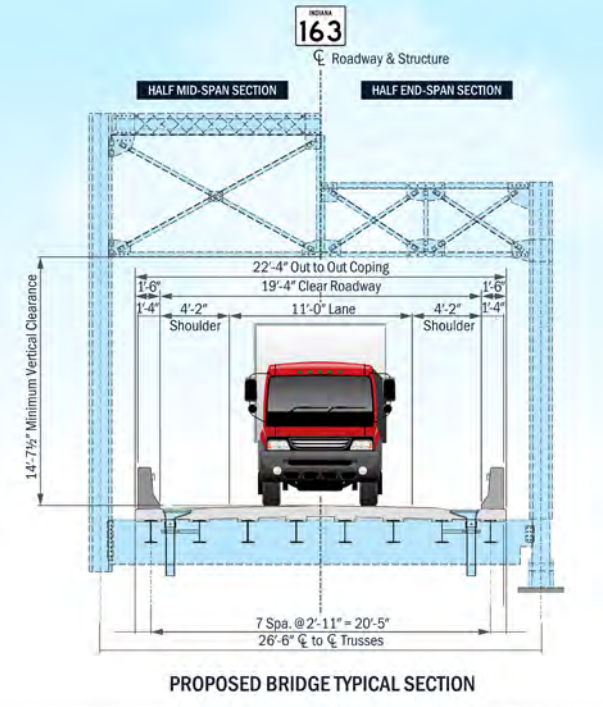


PREFERRED ALTERNATIVE

- **Rehabilitation for Continued Vehicular Use | One-Way Operation is the selected preferred alternative.**
- Project will rehabilitate existing structure to address condition and reduce the roadway to a single lane.
 - 11-foot wide single travel lane
 - 4'-2" wide shoulders
 - 1'-6" wide concrete railings
 - HS-15 (27 tons) load rating
 - Signal and stop bar installed 350 feet from either end of the bridge to stop one direction of travel at a time



PREFERRED ALTERNATIVE



BRIDGE REPAIRS



Replace Lower Gusset Plates



Replace Bent Upper Bracing



Replace 5 of 8 Substandard Stringers



Replace Lower Chord Members



MAINTENANCE OF TRAFFIC

- Construction to begin Summer 2024
- Full bridge closure for approximately eight to sixteen months
- Official detour using SR 163, SR 71, US 36 and SR 63



PROJECT IMPACTS OVERVIEW

Type	Impact	Summary
Relocations	0	<ul style="list-style-type: none"> No Impacts
Right-of-Way (ROW)	0.36 acre	<ul style="list-style-type: none"> Mostly within previously disturbed ROW Small amount of permanent new ROW will be acquired
Traffic Pattern	Two-Way to One-Way	<ul style="list-style-type: none"> No changes in access; improved safety Added traffic lights Minor increase in travel time for motorists
Water/Wetlands	435 linear feet	<ul style="list-style-type: none"> Brouilletts Creek and its floodway and unnamed tributary (UNT) Scour protection along Brouilletts Creek
Terrestrial Habitat	1.5 acres	<ul style="list-style-type: none"> For construction access and utility relocations
Cultural Resources (Section 106)	Retains	<ul style="list-style-type: none"> Preserves and rehabilitates historic bridge
Threatened & Endangered Species	< 1.0 acre bat habitat	<ul style="list-style-type: none"> Up to 1 acre of trees (Indiana bat and northern long-eared bat habitat) “May Affect, Not Likely to Adversely Affect – with Avoidance and Minimization Measures (AMMs)”
Community impacts, public services, noise, environmental justice populations, air quality, hazardous materials	0	<ul style="list-style-type: none"> No impacts



Public Hearing



PROJECT INFORMATION



PROJECT WEBSITE:

<https://www.in.gov/indot/about-indot/central-office/welcome-to-the-crawfordsville-district/>



INDOT CUSTOMER SERVICE:

www.INDOT4U.com
INDOT@indot.in.gov
(855) 463-6848



INDOT PROJECT MANAGER:

Richard Gilyeat
RGilyeat@indot.IN.gov



PROJECT INFORMATION

The environmental documentation, Section 106, and preliminary design information is available to view at the following locations:

1. **Clinton Public Library** | 313 S. Fourth Street, Clinton, IN 47842
2. **INDOT Crawfordsville District Office** | 41 West 300 North, Crawfordsville, IN
3. **INDOT Website** | bit.ly/INDOTCrawfordsville
4. **Copies of project documents can be mailed upon request** by contacting INDOT Customer Service at 855-INDOT4U (1-855-463-6848).



Thank You for Participating

VERMILLION COUNTY | DES. NO. 1701589

BRIDGE NO. 163-83-01393A (NBI NO. 28420)

JANUARY 17, 2023 | 5:30 – 7:00 P.M.

SOUTH VERMILLION HIGH SCHOOL



